

O.D.O.T. DISTRICT 2 SURVEY OFFICE (USE ONLY)

PERSONNEL

REFERENCE NO. 18 B

SHEET 6 OF 18

NOTES LOEHRKE DATE 4/1/94
H.C. CANTERBURY WEATHER NICE
R.C. VOGEL TEMP. 45°

ROUTE SR 2
COUNTY LUCAS
TOWNSHIP SPRINGFIELD
SECTION 16

DWG BY JAMES PID 95717

T 8 N R 10 E

TYPE MONUMENT MONBOX

ON SURFACE - ~~BELOW~~ ON

OFFSET ☉ PAVEMENT ON LT : RT
28' TO RT EDGE PAVEMENT

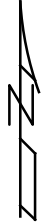
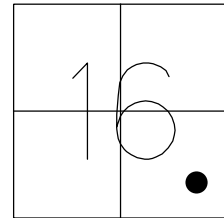
STATION: 502+06

HORZ. DATUM: -

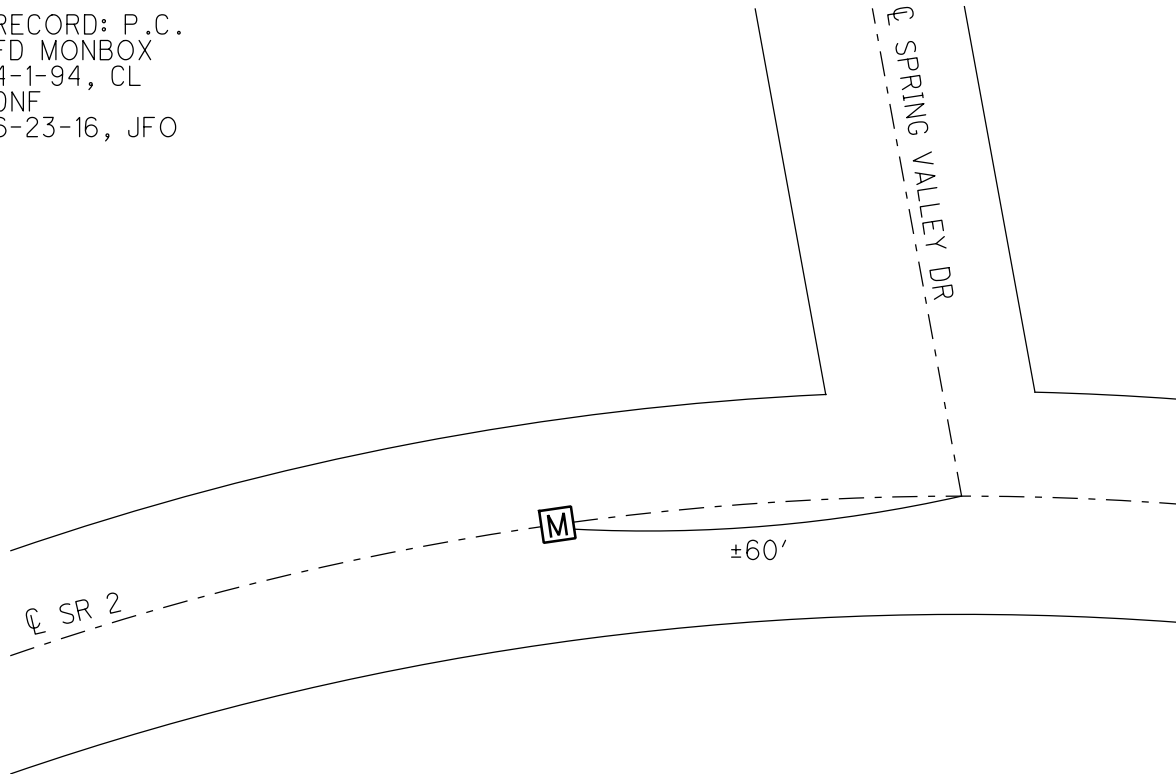
GEOID: -

GRID: NORTHING: -

EASTING: -



RECORD: P.C.
FD MONBOX
4-1-94, CL
DNF
6-23-16, JFO



O.D.O.T. DISTRICT 2 SURVEY OFFICE

PERSONNEL

REFERENCE NO. 18-B

SHEET 20 OF 25

NOTES LOEHRKE

H.C. CANTERBURY

R.C. VOGEL

DATE 4-1-94

WEATHER Nice

TEMP. 75

ROUTE SR 2

COUNTY LUCAS

TOWNSHIP Springfield

SECTION 16

T. 8 N. R. 10 E

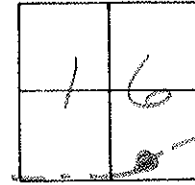
TYPE MONUMENT Mon Box

ON SURFACE - ~~BELOW~~ Yes

~~LEFT -~~ PAV'T. - RIGHT Yes

28' TO Rt EDGE PAVEMENT

S.L.M. 502106



APPEARS TO BE P.C

