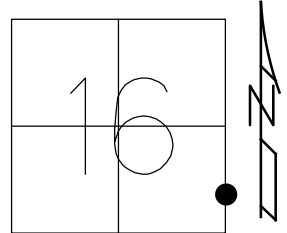


O.D.O.T. DISTRICT 2 SURVEY OFFICE (USE ONLY)

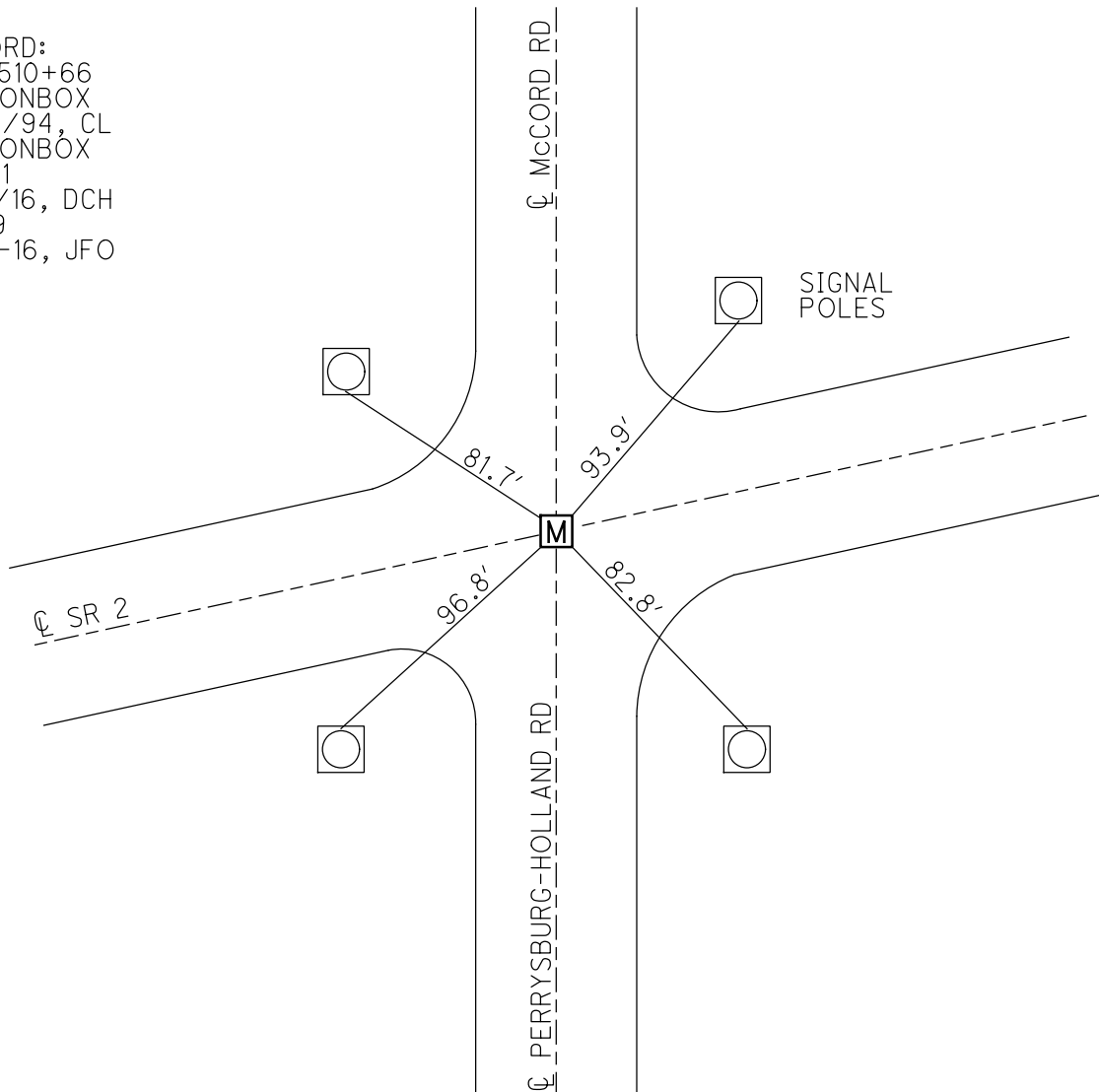
PERSONNEL \_\_\_\_\_ REFERENCE NO. 19 SHEET 8 OF 18  
 NOTES LOEHRKE DATE 3-30-94 ROUTE SR 2  
 H.C. CANTERBURY WEATHER NICE COUNTY LUCAS  
 R.C. VOGEL TEMP. 44° TOWNSHIP SPRINGFIELD  
 DWG BY JAMES PID 95717 SECTION 16  
 T 8 N R 10 E

TYPE MONUMENT MONBOX  
 ON SURFACE - ~~BELOW~~ ON  
 OFFSET CL PAVEMENT ON \_\_\_\_\_ LT : RT  
 \_\_\_\_\_ TO \_\_\_\_\_ EDGE PAVEMENT  
 STATION: 510+29.83

HORIZ.DATUM: NAD83 2011 GEOID: NAVD88 2012A  
 GRID: NORTHING: 710990.324 EASTING: 1639423.400



RECORD:  
 STA. 510+66  
 FD MONBOX  
 3/30/94, CL  
 FD MONBOX  
 CNPT1  
 4/18/16, DCH  
 REF19  
 6-23-16, JFO



O.D.O.T. DISTRICT 2 SURVEY OFFICE (USE ONLY)

PERSONNEL

REFERENCE NO. 19

SHEET 1 OF 11

NOTES LOEHRKE

DATE 3/30/94

ROUTE SR 2

H.C. CANTERBURY

WEATHER NICE

COUNTY LUCAS

R.C. VOGEL

TEMP. 44°

TOWNSHIP SPRINGFIELD

SECTION 15

DWG BY RHOADES

PID 94724

T 2 USR

TYPE MONUMENT MONBOX

ON SURFACE - ~~BELOW~~ ON

OFFSET  $\text{C}$  PAVEMENT ON LT : RT

- TO - EDGE PAVEMENT

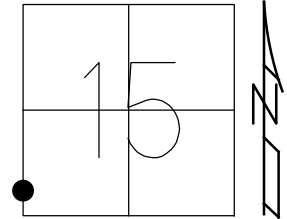
STATION: 511+81.76

HORIZ.DATUM: NAD83 2011

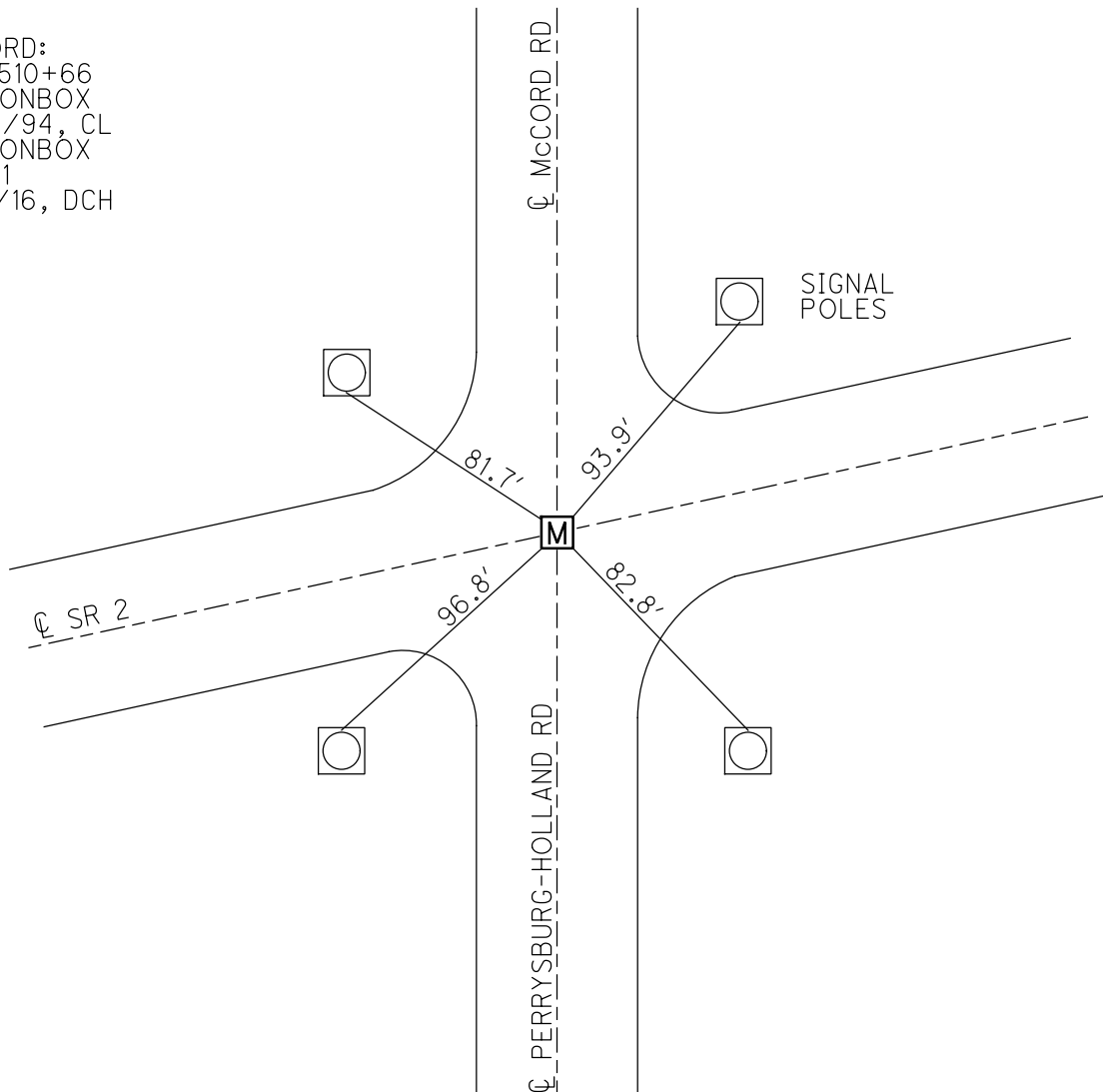
GEOID: NAVD88 2012A

GRID: NORTHING: 710990.340

EASTING: 1639423.338



RECORD:  
STA. 510+66  
FD MONBOX  
3/30/94, CL  
FD MONBOX  
CNPT1  
4/18/16, DCH



O.D.O.T. DISTRICT 2 SURVEY OFFICE

PERSONNEL

REFERENCE NO. 19

SHEET 22 OF 25

NOTES LOHRKE

H.C. CANTERBURY

R.C. VOGEL

DATE 3-30-94

WEATHER NICE

TEMP. +44

ROUTE S.R.2

COUNTY LUCAS

TOWNSHIP Springfield

SECTION 16-15

T&N R 10 E

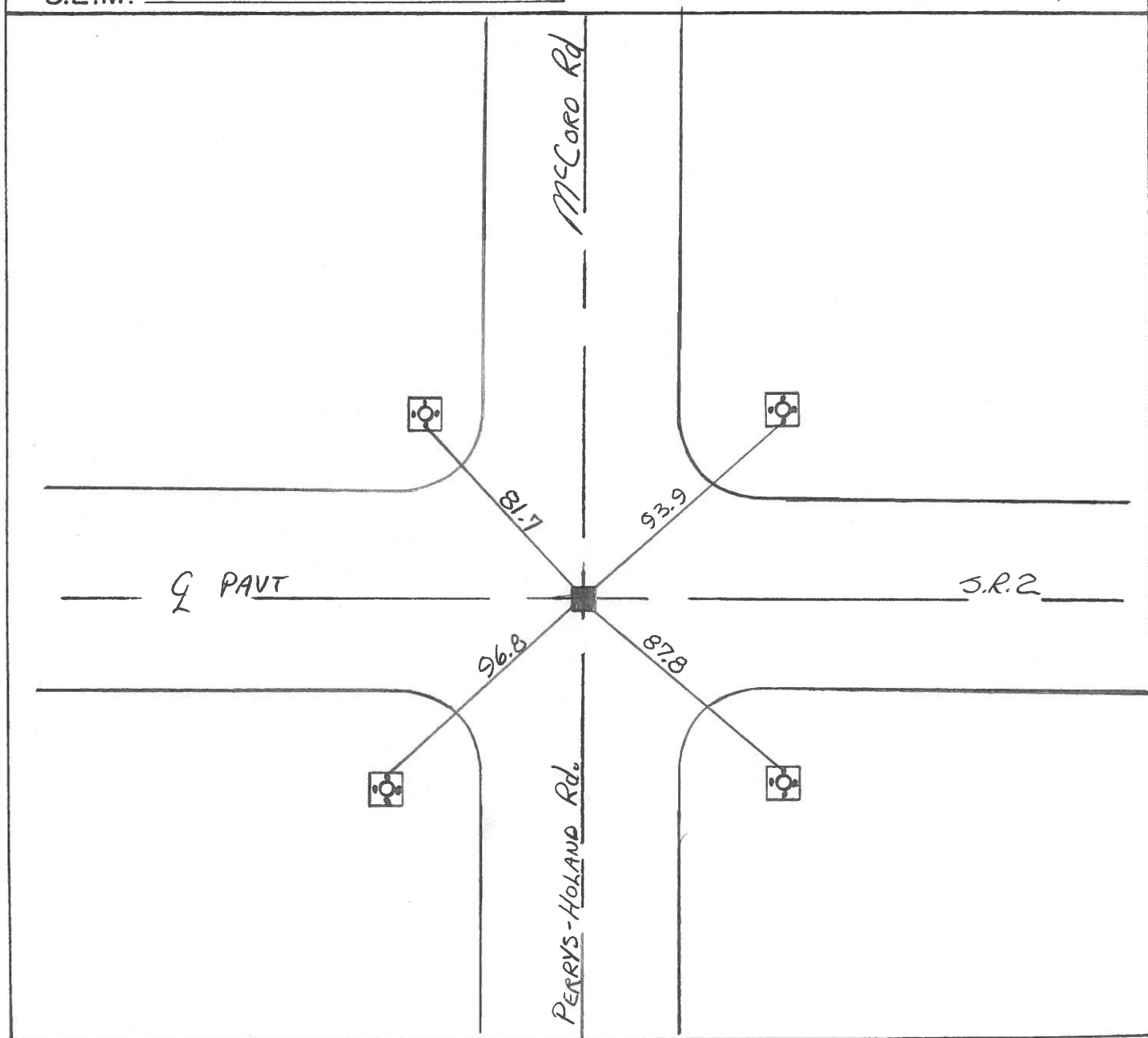
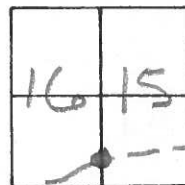
TYPE MONUMENT Mon. Box

ON SURFACE - ~~BELOW~~ Yes

~~LEFT - & PAV'T. - RIGHT~~ Yes

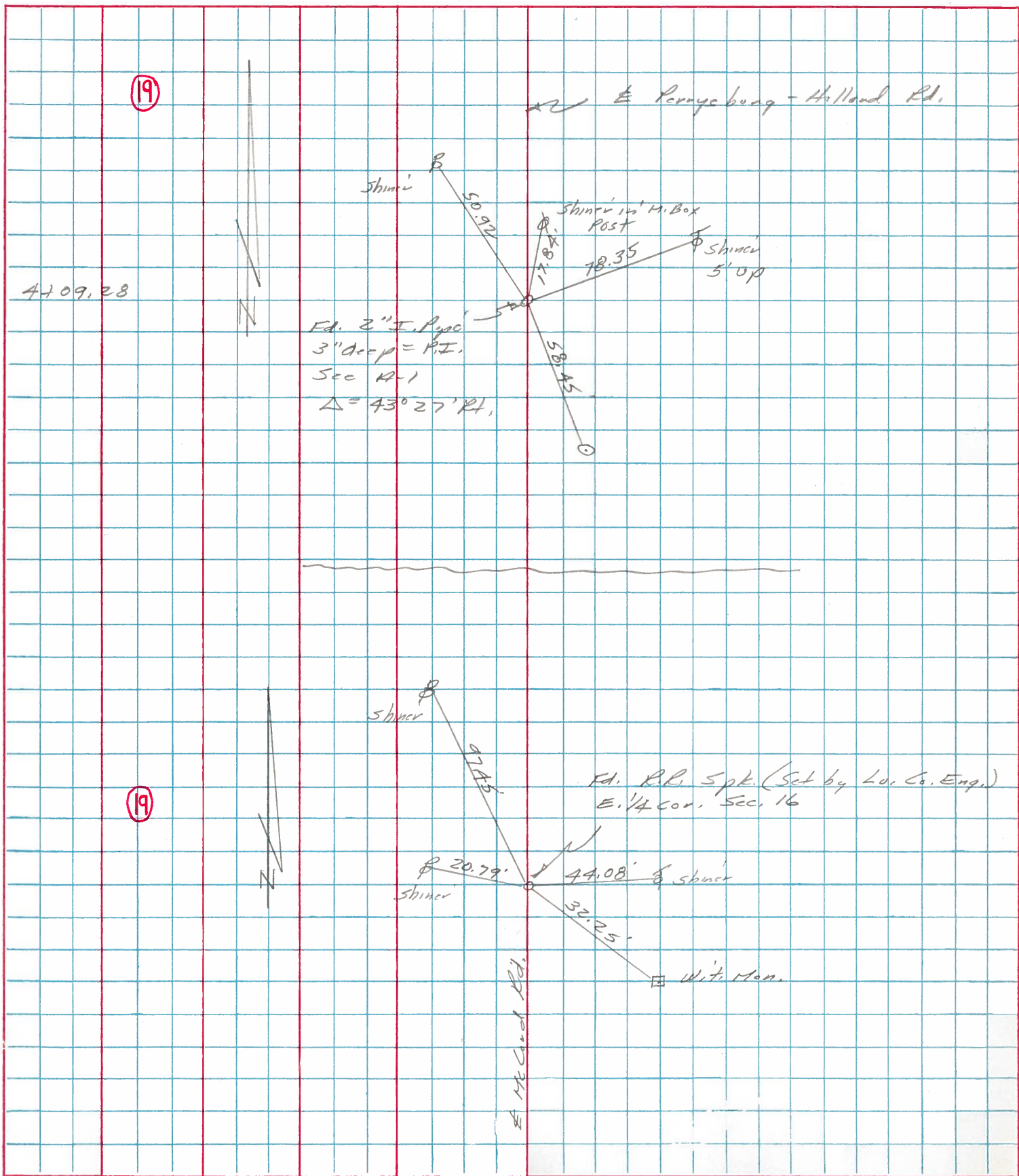
TO EDGE PAVEMENT

S.L.M. 510 +66



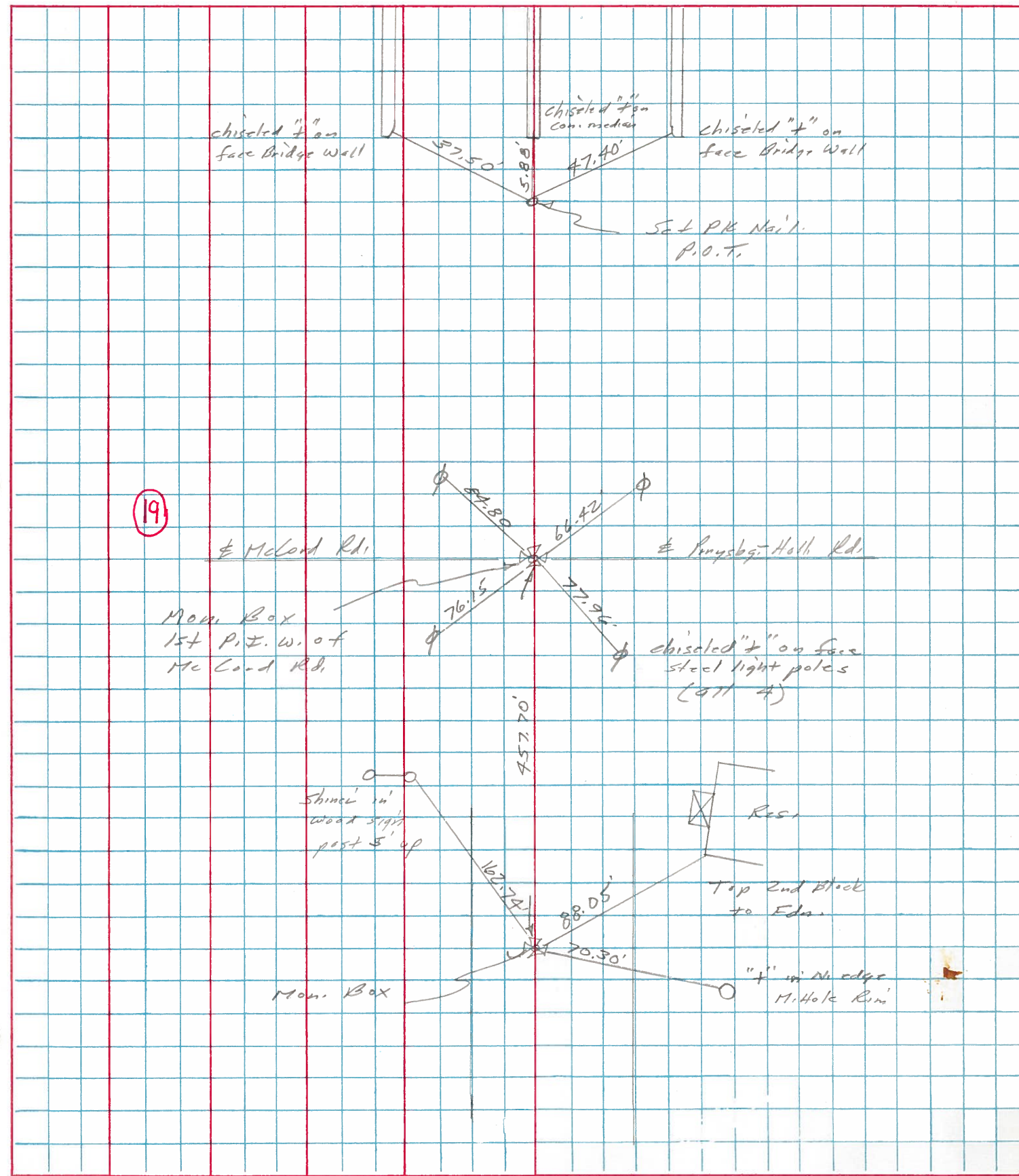
PERSONNEL	TITLE	PERSONNEL	TITLE	COUNTY	DATE	WEATHER	TEMP.
Stone				Lucas	4 Dec. 78	Cold	23°
Crav				#2			

DESCRIPTION Reference LEFT CENTER LINE RIGHT JOB NO. 02327(0)



PERSONNEL	TITLE	PERSONNEL	TITLE	COUNTY	DATE	WEATHER	TEMP.
Stave				Lucas	4 Dec. 78	Cold	23°
ε				#2			
Crow							

DESCRIPTION \_\_\_\_\_ *References* \_\_\_\_\_ JOB NO. 02723(0)

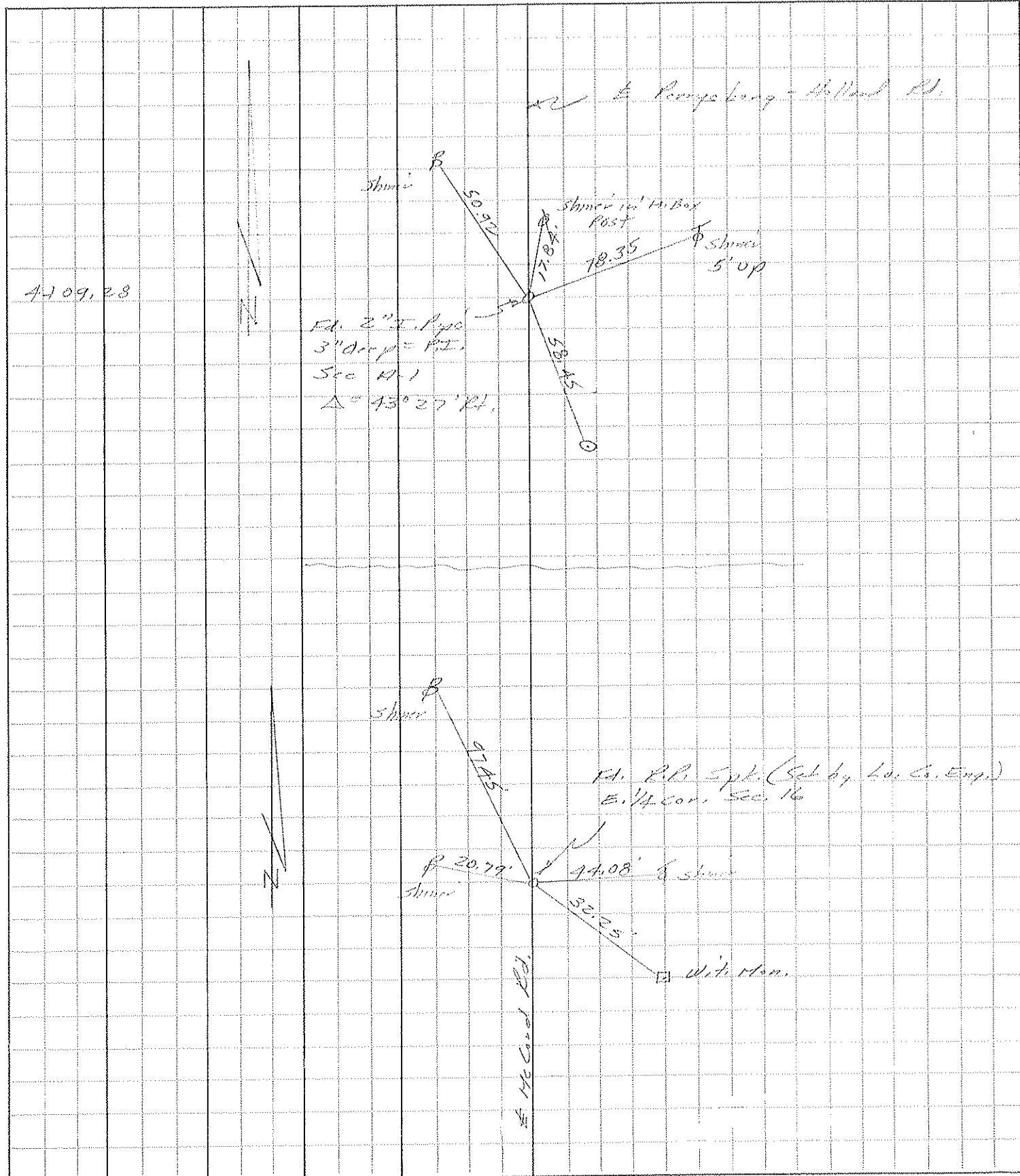


19

PERSONNEL	TITLE	PERSONNEL	TITLE
Shaw			

COUNTY Lucas DATE 4 Dec. 78  
 S. R. #2 WEATHER Cold  
 SEC. TEMP. 29°

DESCRIPTION *R. Shaw* JOB NO. 02527(0)



PERSONNEL TITLE PERSONNEL TITLE

COUNTY Lucas

DATE 3-18-53  
4-30-62

S. R. #2

WEATHER

SEC.

TEMP.

DESCRIPTION

LEFT

CENTER LINE

RIGHT

JOB NO.

Sta. 196+75.35  
P.I. Curve

(Did not find)  
#140

Sta. 199+87.34  
P.T. Curve  
Brass Cap.

Did not find  
#141

N.N.E. to R/W mon. 32.61'  
E.N.E. to shiner in T.P. 77.25'  
S.W. to shiner in A.P. cor post 41.95'

Sta. 206+87.61  
Holland - Perrysburg Rd.  
Iron Cap.

#142  
(19)

N.W. to ~~tin ring of M.H.~~ shiner in Tele. Pole, 56.29' 33.91'  
N.E. to ~~tin ring of M.H.~~ shiner in Tele. Pole, 74.30' 35.84'  
S.W. to shiner in P.P. 46.80'  
S.E. to Near cor. sign post 36.21'

Sta. 259+95.85  
Holland - Sylvania Rd.  
Brass plate

#143 o.k.  
(20)

S.W. to witness mon. 42.37'  
N.E. to shiner in T.P. 95.55'  
N.N.W. to shiner in T.P. 56.20'  
N.W. to witness mon. 41.31'  
S.E. to Co. B.M. #223 42.48'

Sta. 273+95.17

(Did not find)  
#144  
(20)