

O.D.O.T. DISTRICT 2 SURVEY OFFICE (USE ONLY)

PERSONNEL

REFERENCE NO. 20 D

SHEET 16 OF 18

NOTES HOMAN

DATE 8/8/07

ROUTE SR 2

H.C. ROUSOS

WEATHER SUNNY

COUNTY LUCAS

R.C. HOUDSHELL

TEMP. 85°

TOWNSHIP \_\_\_\_\_

VIETH

SECTION 14

DWG BY RHOADES PID 94724

T 2 USR

TYPE MONUMENT MONBOX W/IPIN

ON SURFACE - ~~BELOW~~ ON

OFFSET  $\varnothing$  PAVEMENT ON \_\_\_\_\_ LT : RT

- TO - EDGE PAVEMENT

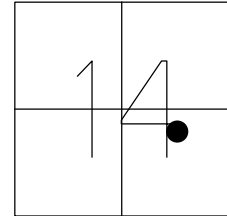
STATION: 607+49.79

HORZ. DATUM: NAD83 2011

GEOID: NAVD88 2012A

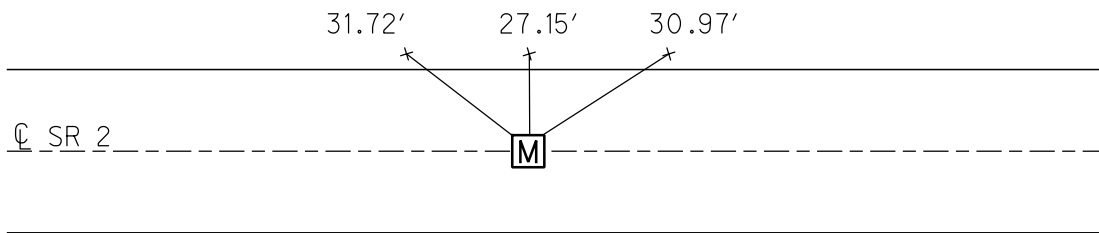
GRID: NORTHING: 712554.668

EASTING: 1648834.111



RECORD: S.T.  
STA. 607+50.56  
FD MONBOX  
W/IPIN  
6/15/71, I.S.  
SV847  
8/8/07, DCH  
FD MONBOX  
W/IPIN  
CNPT1  
4/18/16, DCH

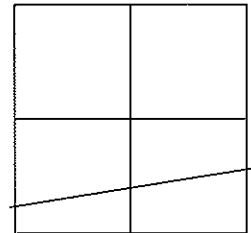
CUT "+"  
IN CURBS



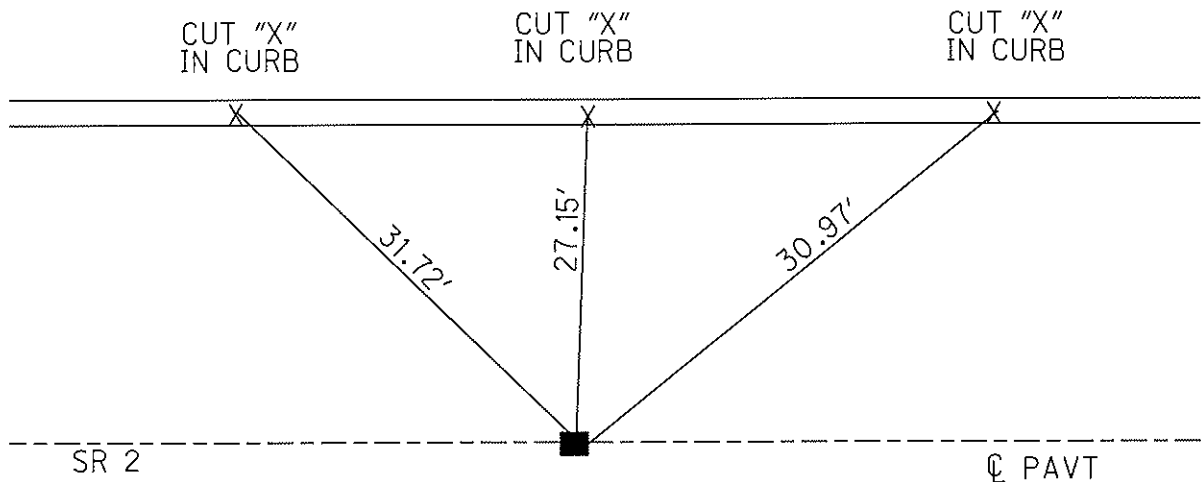
O.D.O.T. DISTRICT 2 SURVEY OFFICE (USE ONLY)

PERSONNEL \_\_\_\_\_ REFERENCE NO. 200 SHEET 5 OF 5  
 NOTES HOMAN DATE 08-08-07 ROUTE SR 2  
 H.C. ROUSOS WEATHER SUNNY COUNTY LUCAS  
 R.C. HOUDSHELL TEMP. +85° TOWNSHIP \_\_\_\_\_  
 \_\_\_\_\_ VIETH \_\_\_\_\_ SECTION \_\_\_\_\_  
 \_\_\_\_\_ T\_\_N R\_\_E

TYPE MONUMENT I.P. MON. BOX  
 ON SURFACE - ~~BELOW~~ ON SURFACE \_\_\_\_\_  
 LEFT - C PAV'T - RIGHT \_\_\_\_\_  
 \_\_\_\_\_ TO \_\_\_\_\_ EDGE PAVEMENT  
 S.L.M. ST 607+50.56 (SV847)  
 GPS Northing=712554.603 Easting=1648834.133



FD. I.P. MON. BOX  
 06-15-71



PERSONNEL	TITLE	PERSONNEL	TITLE	COUNTY	DATE
Stone		Bradley		Lucas	15 June 71
Michalak				S. R. #2	WEATHER Warm
Schroder				SEC. I-475 - East	TEMP. 72°
Face					

DESCRIPTION References to Control Points JOB NO. \_\_\_\_\_

