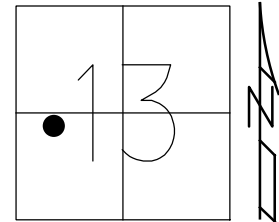


O.D.O.T. DISTRICT 2 SURVEY OFFICE (USE ONLY)

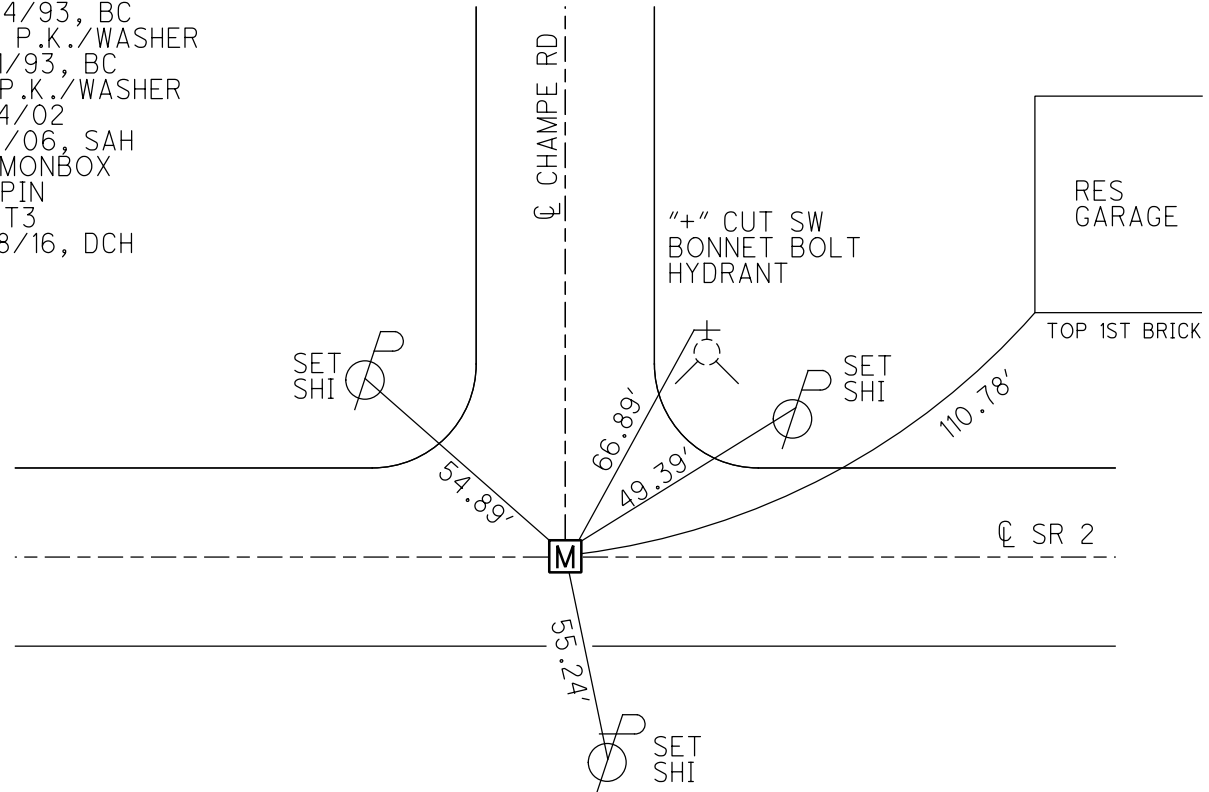
PERSONNEL _____ REFERENCE NO. 22 SHEET 18 OF 18
 NOTES MIKLOVIC DATE 5/9/06 ROUTE SR 2
 H.C. HANKE WEATHER SUNNY COUNTY LUCAS
 R.C. HUSS TEMP. 70° TOWNSHIP _____
 _____ HOUDSHELL, NUHFER SECTION 13
 DWG BY RHOADES PID 94724 T 2 USR

TYPE MONUMENT P.K./WASHER
 ON SURFACE - BELOW ON
 OFFSET \odot PAVEMENT ON LT : RT
- TO - EDGE PAVEMENT
 STATION: 627+96.22



HORZ.DATUM: NAD83 2011 GEOID: NAVD88 2012A
 GRID: NORTHING: 712559.578 EASTING: 1650878.339

RECORD: P.O.T.
 STA.626+41
 FD P.K.NAIL
 7/24/93, BC
 SET P.K./WASHER
 8/11/93, BC
 FD P.K./WASHER
 6/14/02
 5/9/06, SAH
 FD MONBOX
 W/IPIN
 CNPT3
 4/18/16, DCH



O.D.O.T. DISTRICT 2 SURVEY OFFICE

PERSONNEL _____ REFERENCE NO. 22 SHEET 1 OF 7
 NOTES CORDES
 H.C. KUSZ DATE July 24, 1993 ROUTE S.R. 2
 R.C. OTTO WEATHER Nice COUNTY LUCAS
BARNHISEL TEMP. +80 TOWNSHIP ADAMS
 SECTION 13
 T.R.U.S.R. _____

TYPE MONUMENT P.K. NAIL Set P.K. / WASHIT 8-11-93
 ON SURFACE - BELOW ON SURFACE
 LEFT - € PAV'T. - RIGHT € BOTH PAV'T
12.4 TO RT. EDGE PAVEMENT FACE CURB
 S.L.M. 62641

