

O.D.O.T. DISTRICT 2 SURVEY OFFICE (USE ONLY)

PERSONNEL

REFERENCE NO. 25

SHEET 3 OF 13

NOTES CORDES DATE 4/24/93
 H.C. KUSZ WEATHER NICE
 R.C. OTTO TEMP. 80°
BARNHISEL

ROUTE SR 2
 COUNTY LUCAS
 TOWNSHIP ADAMS
 SECTION 13

DWG BY NIESE PID _____

T 2 US R E

TYPE MONUMENT P.K. NAIL

ON SURFACE - ~~BELOW~~ ON _____

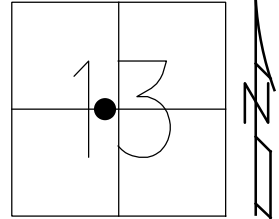
OFFSET \varnothing PAVEMENT ON _____ LT : RT

15.2' TO RT EDGE PAVEMENT

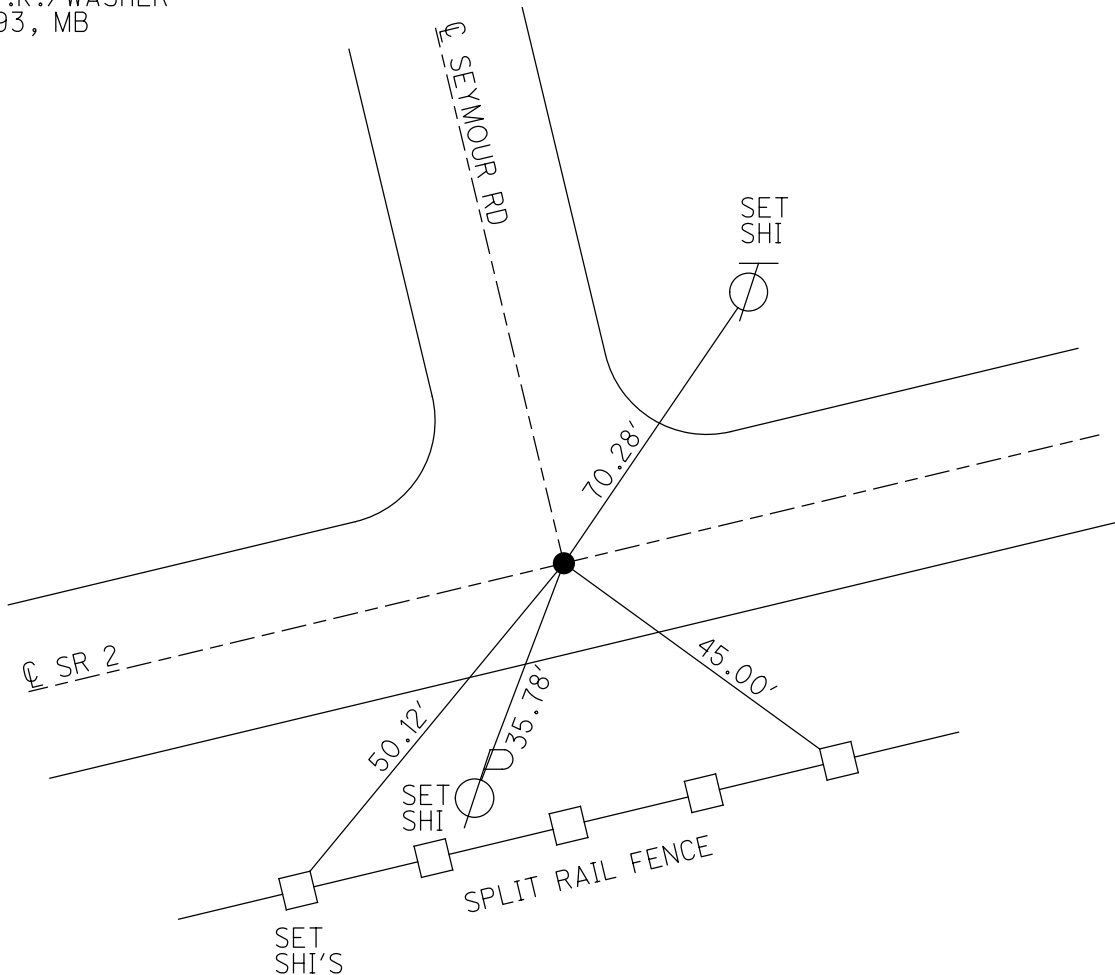
STATION: 640+53

HORIZ.DATUM: _____ GEOID: _____

GRID: NORTHING: _____ EASTING: _____



RECORD:
 FD P.K. NAIL
 4/24/93, MRC
 SET P.K./WASHER
 8/11/93, MB



O.D.O.T. DISTRICT 2 SURVEY OFFICE

PERSONNEL

REFERENCE NO. 25

SHEET 4 OF 7

NOTES CORDES

H.C. KUSZ

R.C. OTTO

BAENHISEL

DATE July 24, 1993

WEATHER Nice

TEMP. +80°

ROUTE S.R.2

COUNTY Lucas

TOWNSHIP ADAMS

SECTION 13

T. 245 R

Reset P.K./WASHER
8-11-93

TYPE MONUMENT PK NAIL

ON SURFACE - BELOW YES

~~LEFT-C~~ PAV'T. - RIGHT YES

15.2 TO RT EDGE PAVEMENT FACE Curve

S.L.M. 640 + 53

