

O.D.O.T. DISTRICT 2 SURVEY OFFICE (USE ONLY)

PERSONNEL

REFERENCE NO. 26

SHEET 4 OF 13

NOTES CORDES
H.C. KUSZ
R.C. OTTO
BARNHISEL

DATE 4/24/93
WEATHER PARTLY CLOUDY
TEMP. 75°

ROUTE SR 2
COUNTY LUCAS
TOWNSHIP ADAMS
SECTION 13

DWG BY NIESE PID _____

T 2 US R E

TYPE MONUMENT P.K./WASHER

ON SURFACE - ~~BELOW~~ ON

OFFSET ☉ PAVEMENT ON LT : RT

15.2' TO RT EDGE PAVEMENT

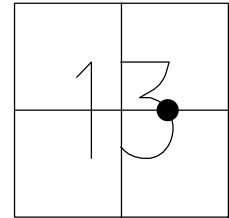
STATION: 655+72

HORZ. DATUM: _____

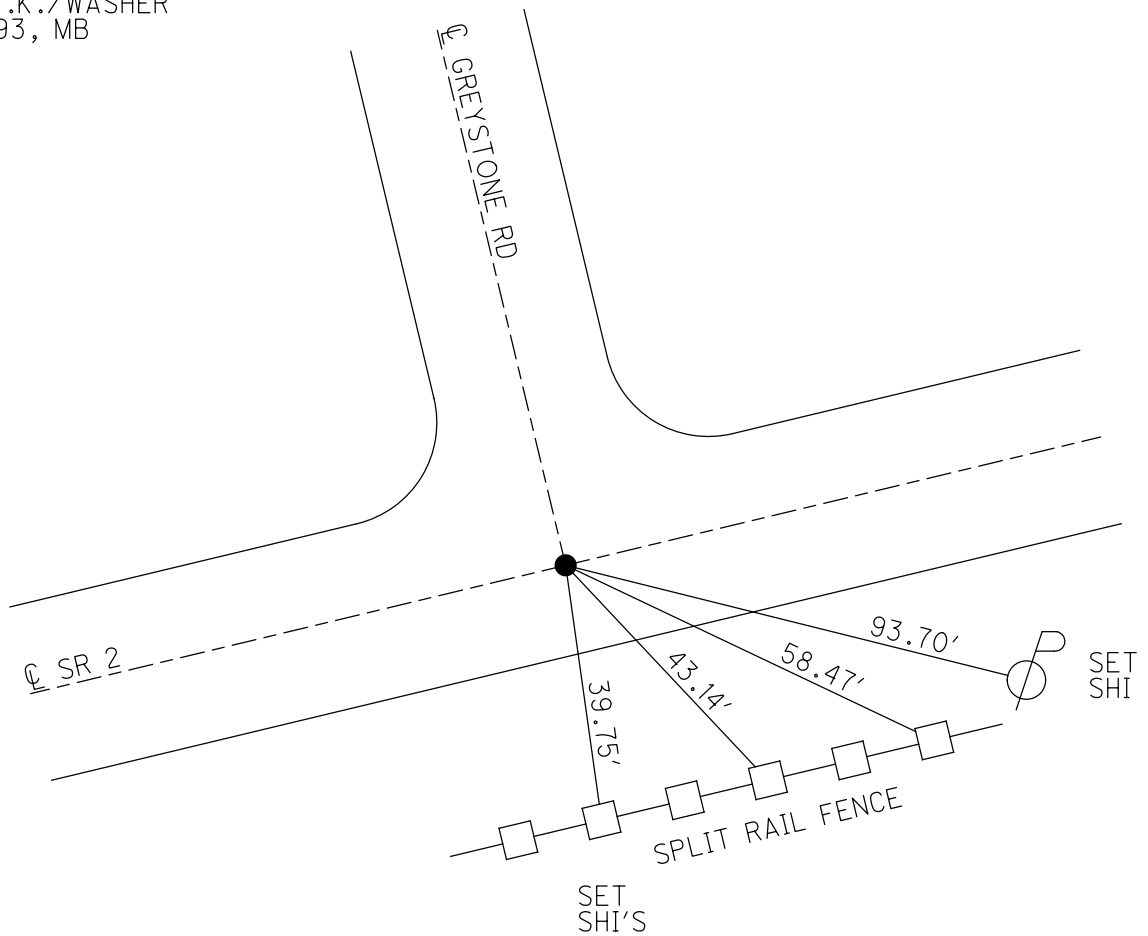
GEOID: _____

GRID: NORTHING: _____

EASTING: _____



RECORD:
FD P.K./WASHER
4/24/93, MRC
SET P.K./WASHER
8/11/93, MB



O.D.O.T. DISTRICT 2 SURVEY OFFICE

PERSONNEL _____

REFERENCE NO. 26

SHEET 5 OF 7

NOTES CORDES

H.C. KUSZ

R.C. OTTO

BARNHISEL

DATE July 24, 1993

WEATHER Pt. Cloudy

TEMP. 75

ROUTE S.R. 2

COUNTY Lucas

TOWNSHIP ADAMS

SECTION 13

T. 24 S. 5 R. _____

Reset

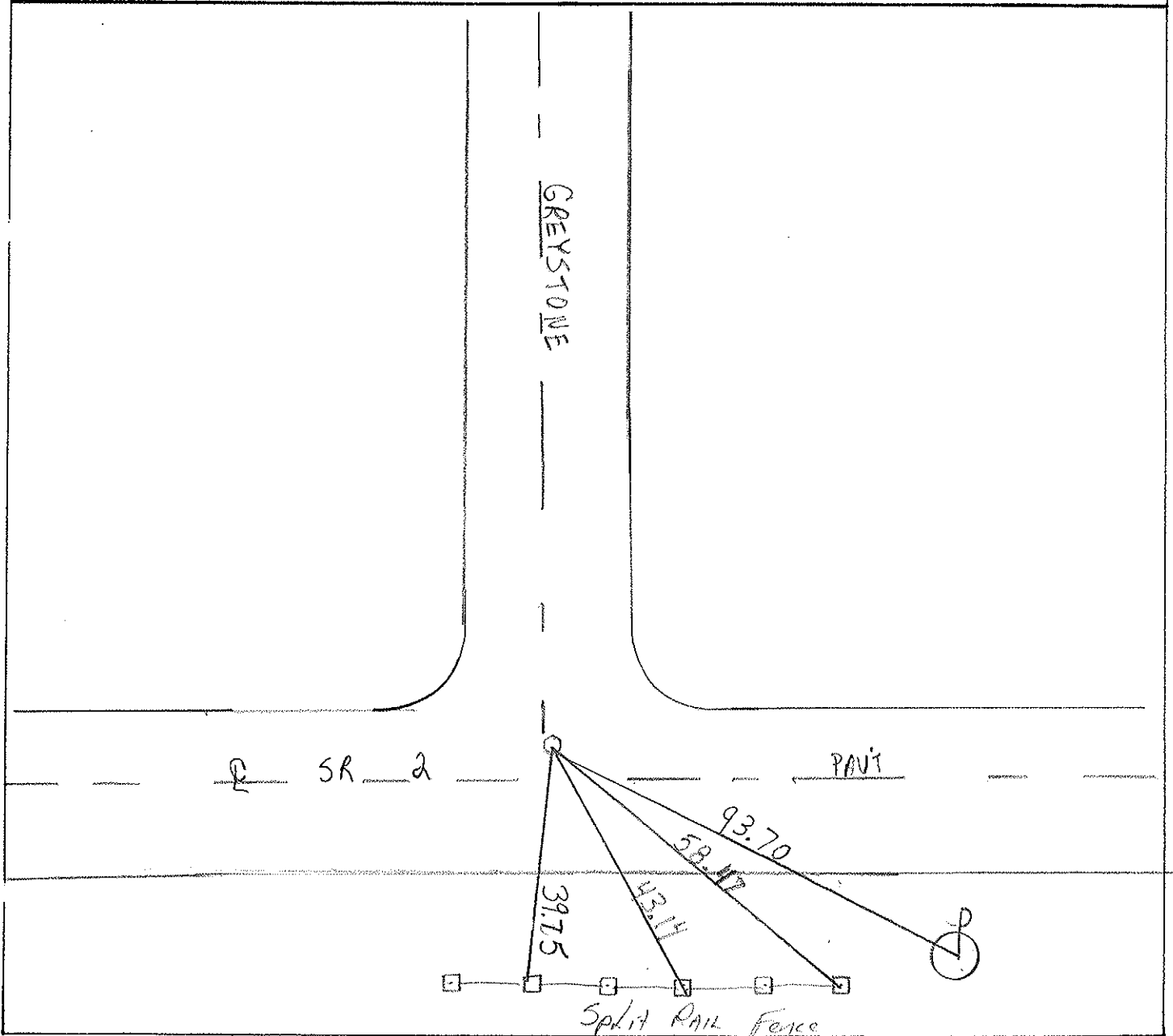
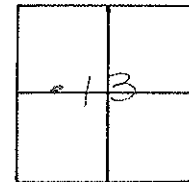
TYPE MONUMENT PK Nail & washer

ON SURFACE - BELOW Yes

LEFT - ☉ PAV'T. - RIGHT Both

15.2 TO RT. EDGE PAVEMENT Curb

S.L.M. 655+72



PERSONNEL	TITLE	PERSONNEL	TITLE	COUNTY	DATE	WEATHER	TEMP.
BLAY				LUCAS	5/16/61	CLEAR	75°
CREW				#2			
				Reynolds Rd To T.T.R.R.			

DESCRIPTION Ref. To Mon. JOB NO. BIAS 10/3/61

LEFT CENTER LINE RIGHT

#3

