

O.D.O.T. DISTRICT 2 SURVEY OFFICE (USE ONLY)

PERSONNEL

REFERENCE NO. 27

SHEET 5 OF 13

NOTES CORDES

DATE 7/16/93

ROUTE SR 2

H.C. KUSZ

WEATHER PARTLY CLOUDY

COUNTY LUCAS

R.C. OTTO
BARNHISEL

TEMP. 78°

TOWNSHIP ADAMS

DWG BY NIESE PID _____

SECTION 13

T 2 US R E

TYPE MONUMENT P.K./WASHER

ON SURFACE - ~~BELOW~~ ON

OFFSET 0 PAVEMENT ON LT : RT

14.8' TO RT EDGE PAVEMENT

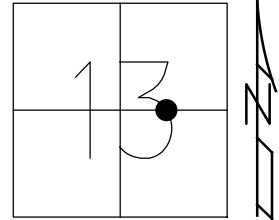
STATION: 677+18

HORZ.DATUM: _____

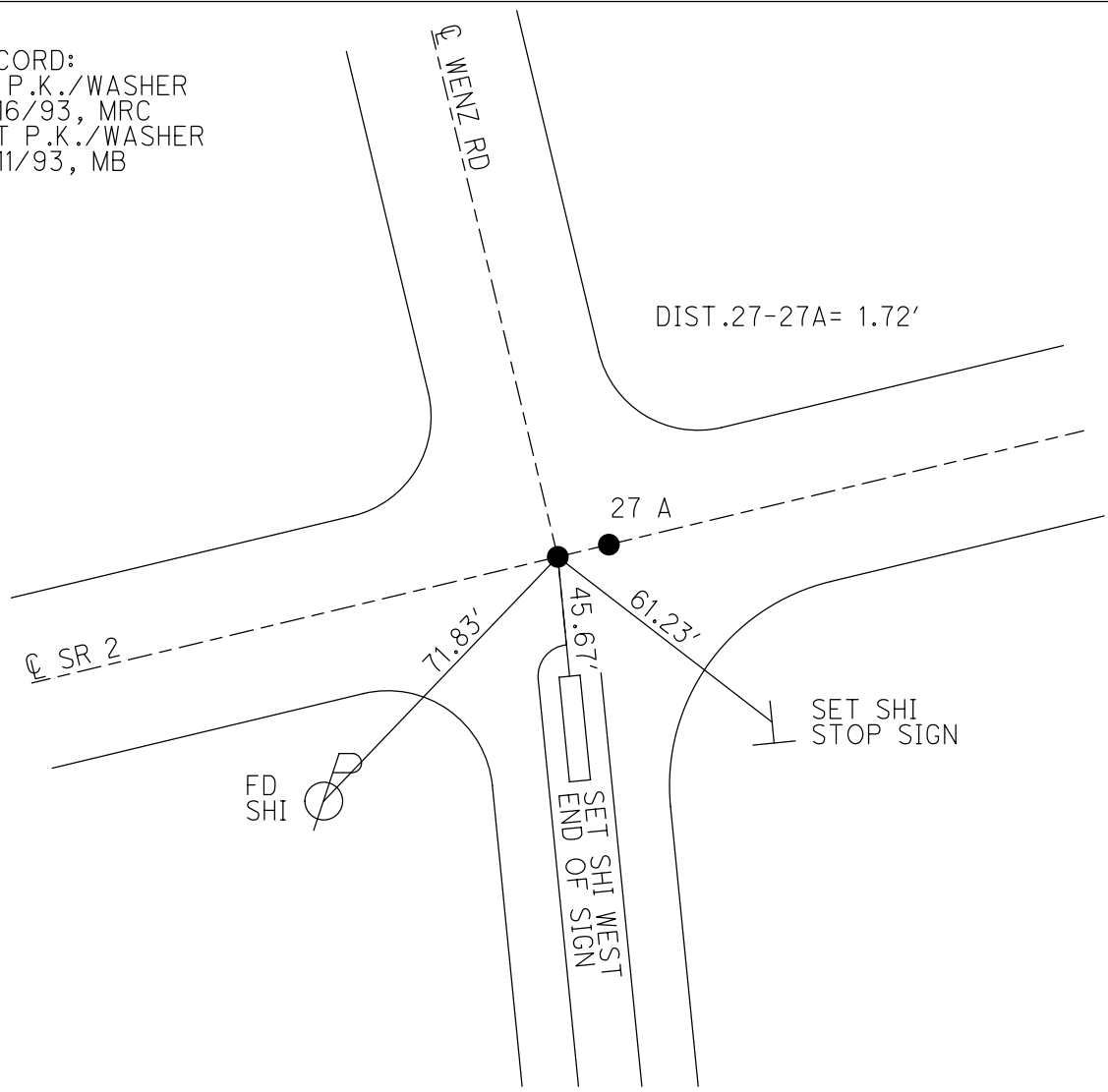
GEOID: _____

GRID: NORTHING: _____

EASTING: _____



RECORD:
FD P.K./WASHER
7/16/93, MRC
SET P.K./WASHER
8/11/93, MB



O.D.O.T. DISTRICT 2 SURVEY OFFICE

PERSONNEL _____

REFERENCE NO. 27

SHEET 6 OF 7

NOTES CORDES

H.C. KUSZ

R.C. OTTO

BARNHISEL

DATE 7-16-93

WEATHER PT CLOUDY

TEMP. +70

ROUTE SR 2

COUNTY LUCAS

TOWNSHIP ADAMS

SECTION 13

TZ45 R _____

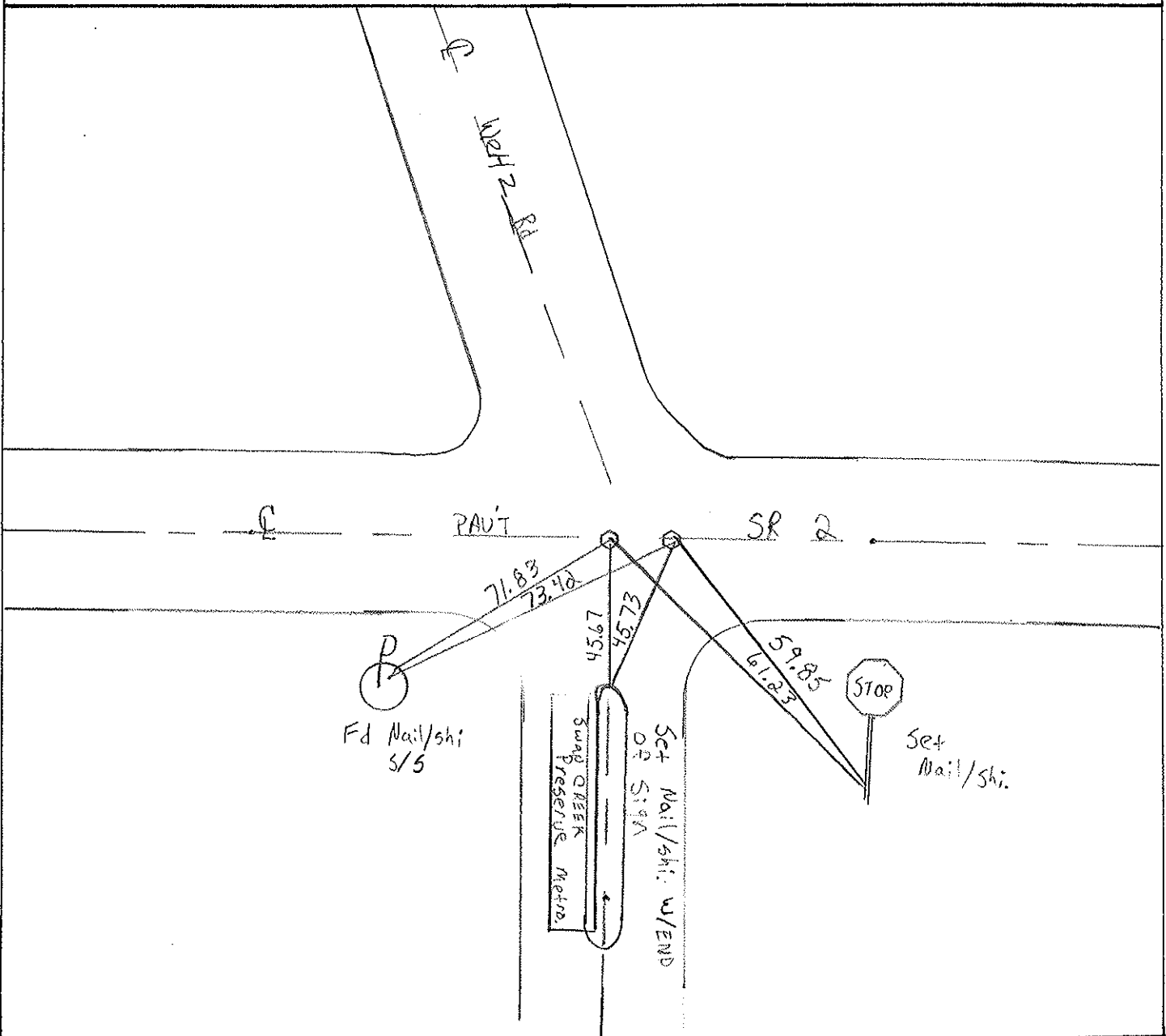
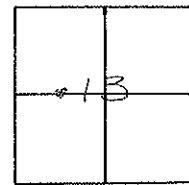
TYPE MONUMENT PK Nails & Washers

ON SURFACE - BELOW _____

~~LEFT~~ C ~~PAV'T.~~ - RIGHT & Both _____

14.8 TO RT EDGE PAVEMENT

S.L.M. 677+18 677+20 1.72 Between



PERSONNEL	TITLE	PERSONNEL	TITLE
BIAS			
&			
CREW			

COUNTY LOCAS DATE 5/19/61

#2 WEATHER CLEAR

S. R. Reynolds Rd To T.T. R.R. TEMP. 75

SEC. _____

Ref To Mon

DESCRIPTION	LEFT	CENTER LINE	RIGHT	JOB NO.
-------------	------	-------------	-------	---------

BIAS 10/3/61

