

O.D.O.T. DISTRICT 2 SURVEY OFFICE (USE ONLY)

PERSONNEL

REFERENCE NO. 27 A

SHEET 6 OF 13

NOTES CORDES

DATE 7/16/93

ROUTE SR 2

H.C. KUSZ

WEATHER PARTLY CLOUDY

COUNTY LUCAS

R.C. OTTO  
BARNHISEL

TEMP. 78°

TOWNSHIP ADAMS

DWG BY NIESE PID \_\_\_\_\_

SECTION 13

T 2 US R E

TYPE MONUMENT P.K./WASHER

ON SURFACE - ~~BELOW~~ ON

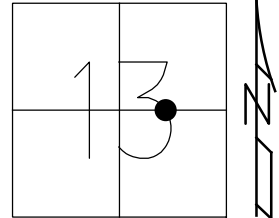
OFFSET Q PAVEMENT ON LT : RT

14.8' TO RT EDGE PAVEMENT

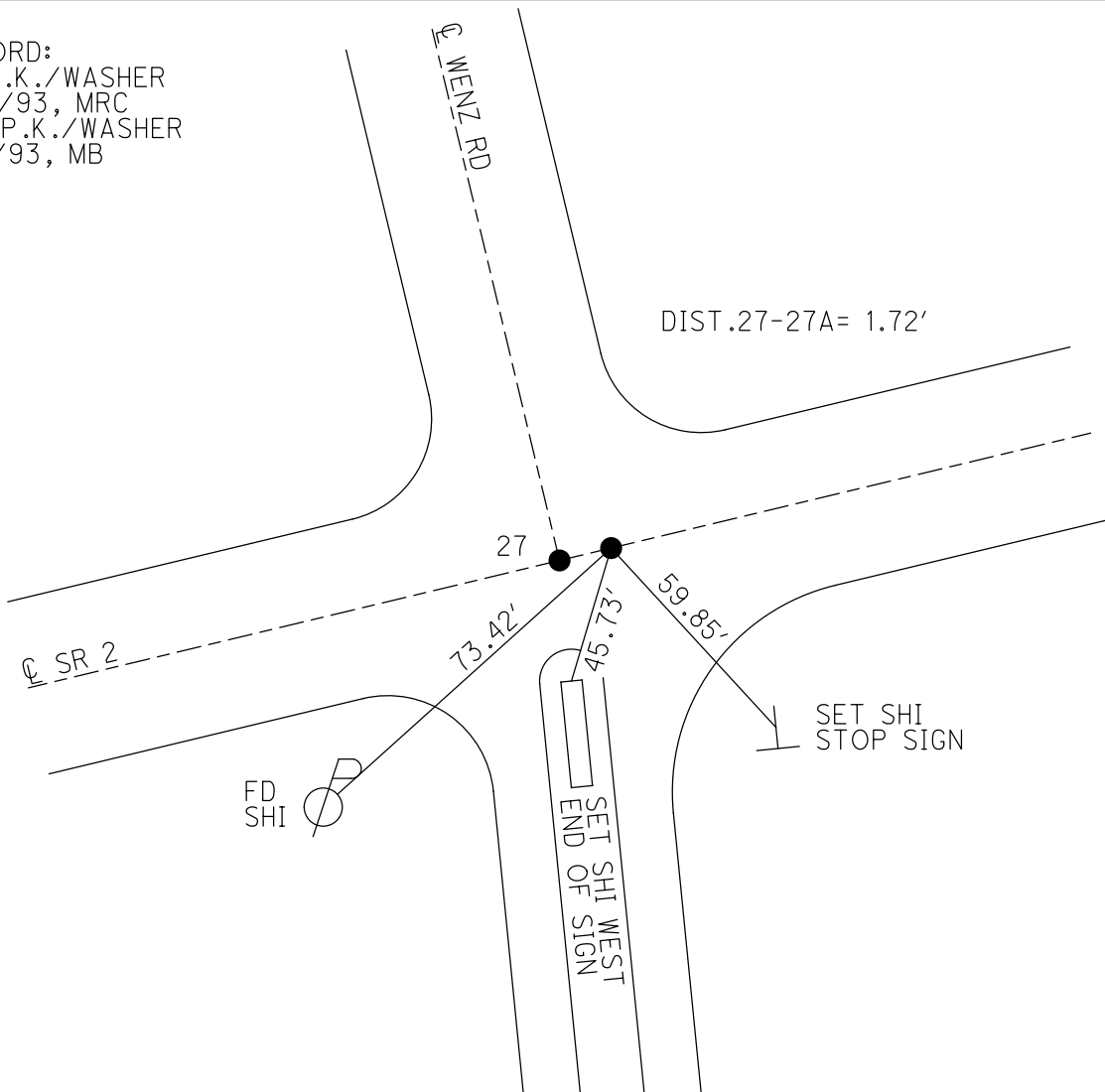
STATION: 677+20

HORZ. DATUM: \_\_\_\_\_ GEOID: \_\_\_\_\_

GRID: NORTHING: \_\_\_\_\_ EASTING: \_\_\_\_\_



RECORD:  
FD P.K./WASHER  
7/16/93, MRC  
SET P.K./WASHER  
8/11/93, MB



# O.D.O.T. DISTRICT 2 SURVEY OFFICE

PERSONNEL \_\_\_\_\_

REFERENCE NO. 27

SHEET 6 OF 7

NOTES CORDES

H.C. KUSZ

R.C. OTTO

BARNHISEL

DATE 7-16-93

WEATHER PT CLOUDY

TEMP. +70

ROUTE SR 2

COUNTY LUCAS

TOWNSHIP ADAMS

SECTION 13

TZ45 R \_\_\_\_\_

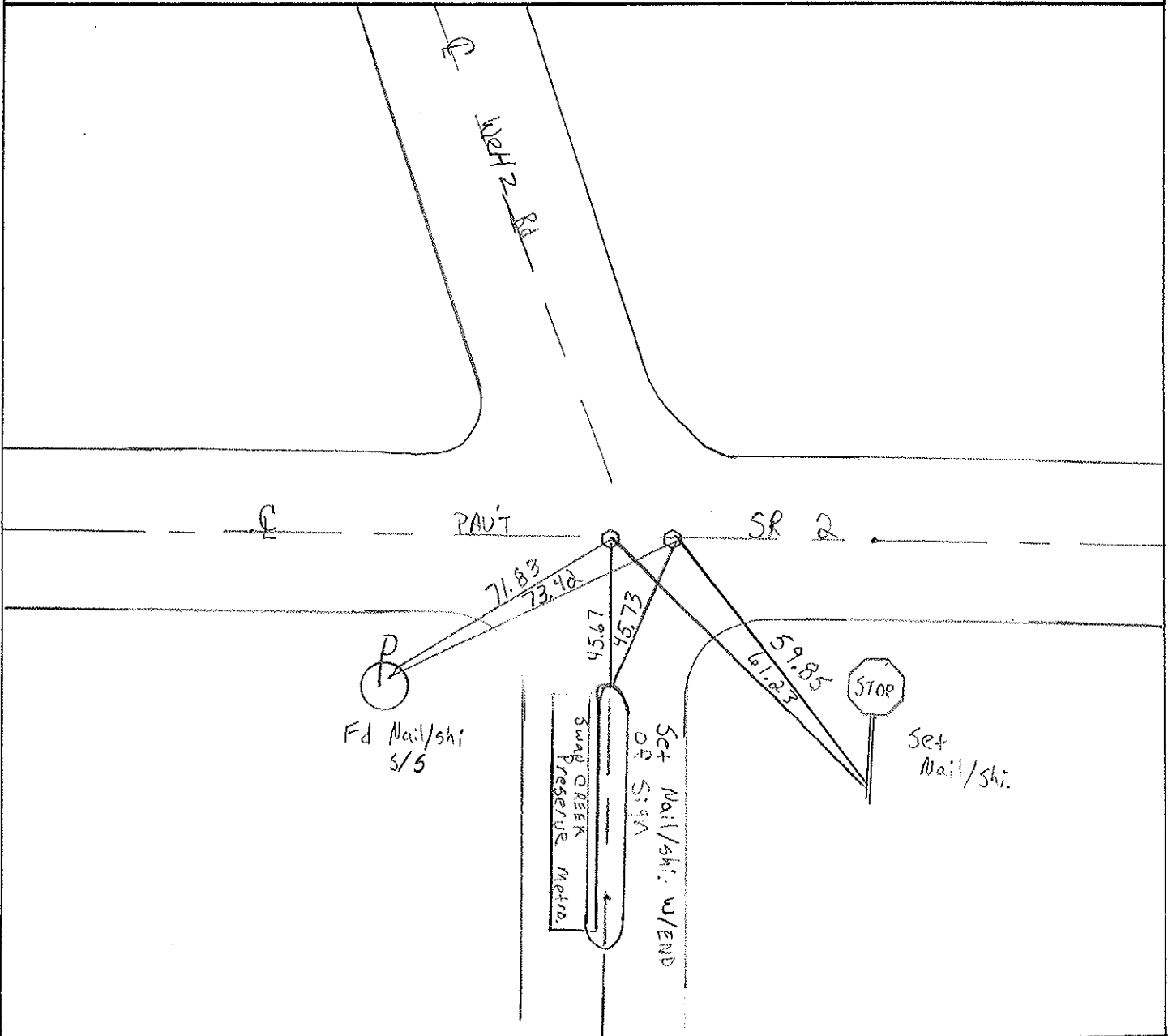
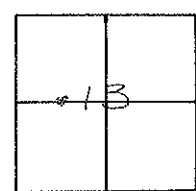
TYPE MONUMENT PK Nails & Washers

ON SURFACE - BELOW \_\_\_\_\_

~~LEFT~~ C ~~PAV'T.~~ - RIGHT & Both \_\_\_\_\_

14.8 TO RT EDGE PAVEMENT

S.L.M. 677+18 677+20 1.72 Between



PERSONNEL	TITLE	PERSONNEL	TITLE
BIAS			
&			
CREW			

COUNTY LOCAS DATE 5/19/61

#2 WEATHER clear

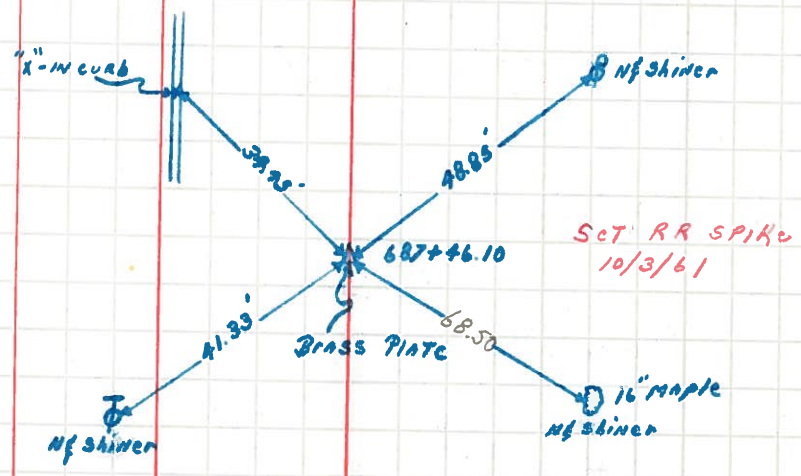
Ref To Mon

S. R. Reynolds Rd To T.T. R.R. TEMP. 75

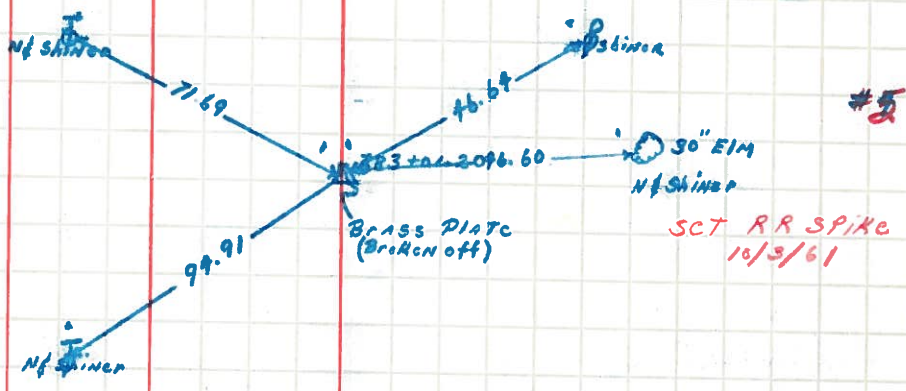
SEC. \_\_\_\_\_

DESCRIPTION \_\_\_\_\_ LEFT \_\_\_\_\_ CENTER LINE \_\_\_\_\_ RIGHT \_\_\_\_\_ JOB NO. \_\_\_\_\_

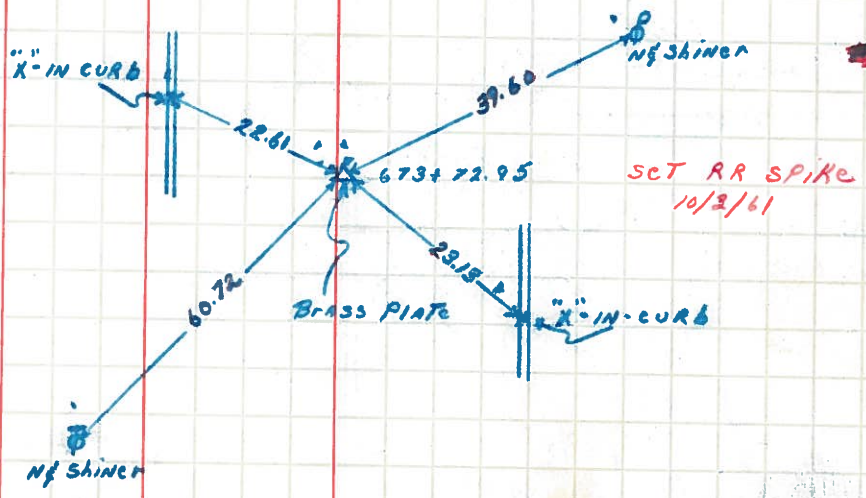
BIAS 10/3/61



#6



#5



#4