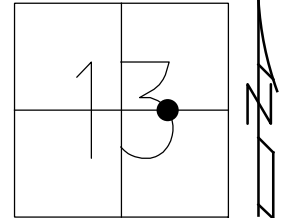


O.D.O.T. DISTRICT 2 SURVEY OFFICE (USE ONLY)

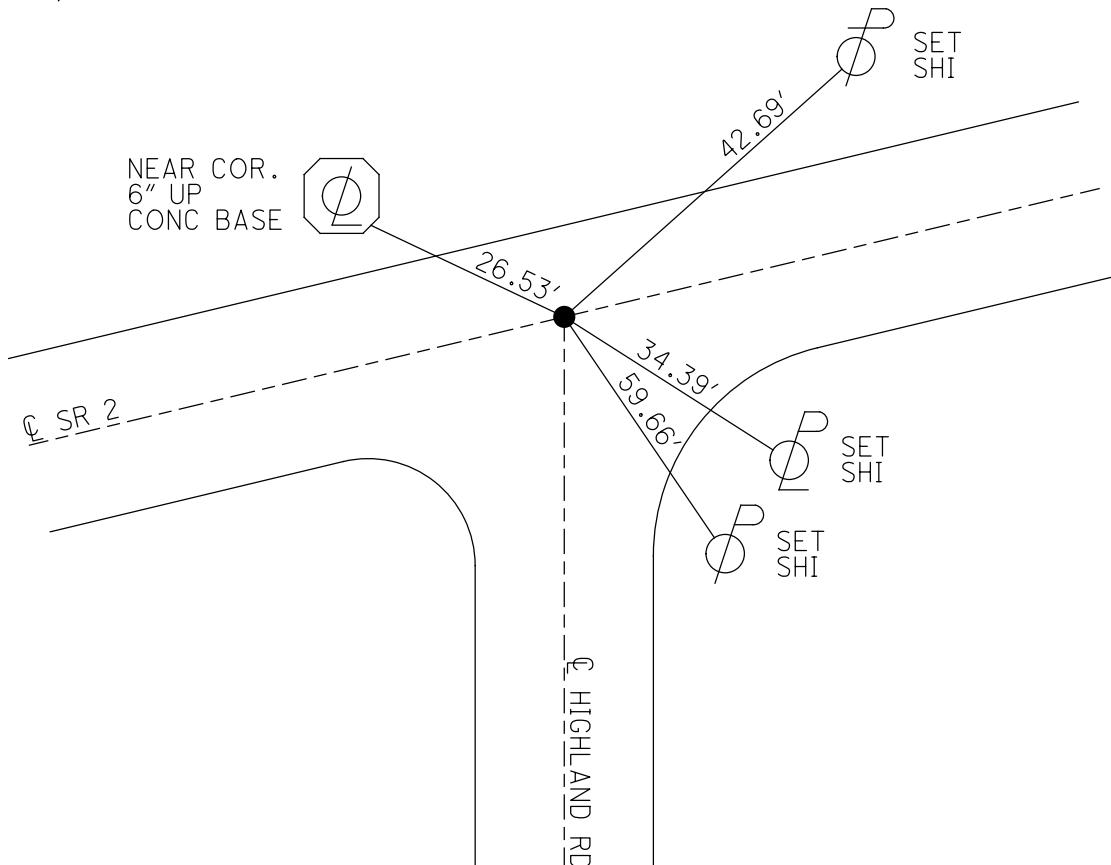
PERSONNEL _____ REFERENCE NO. 28 SHEET 7 OF 13
 NOTES CORDES DATE 7/16/93 ROUTE SR 2
 H.C. KUSZ WEATHER PARTLY CLOUDY COUNTY LUCAS
 R.C. OTTO TEMP. 78° TOWNSHIP ADAMS
BARNHISEL SECTION 13
 DWG BY NIESE PID _____ T 2 US R E

TYPE MONUMENT P.K./WASHER
 ON SURFACE - ~~BELOW~~ ON
 OFFSET Q PAVEMENT ON LT : RT
15.2' TO RT EDGE PAVEMENT
 STATION: 709+34



HORZ. DATUM: _____ GEOID: _____
 GRID: NORTHING: _____ EASTING: _____

RECORD:
 FD P.K./WASHER
 7/16/93, MRC
 SET P.K./WASHER
 8/11/93, MB



O.D.O.T. DISTRICT 2 SURVEY OFFICE

PERSONNEL _____

REFERENCE NO. 28

SHEET 7 OF 7

NOTES Cordes

H.C. Kusz

DATE 7-16-93

ROUTE S.R. 2

R.C. OTTO

WEATHER Pt Cloudy

COUNTY Lewis

BARNHISEL

TEMP. 170

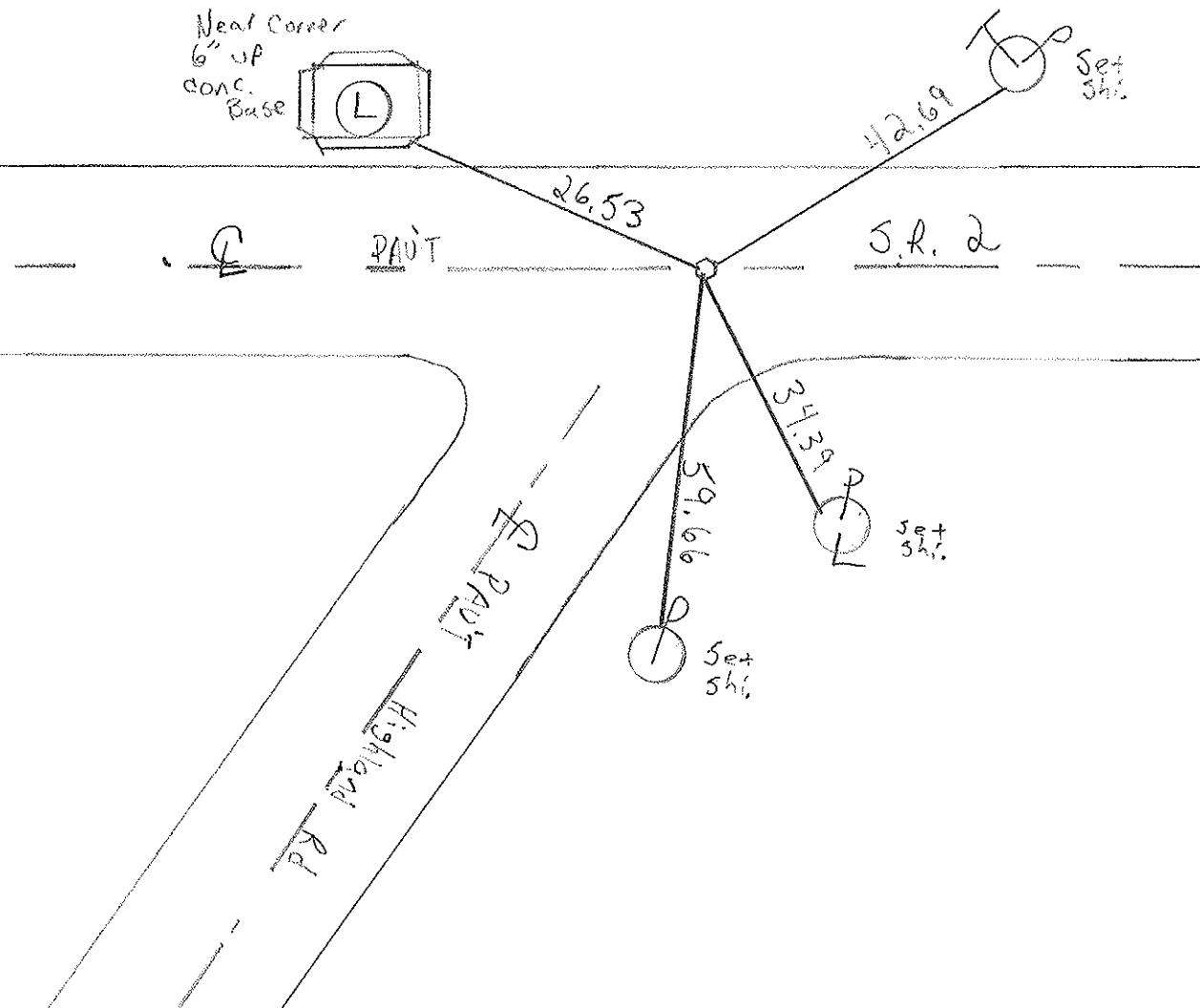
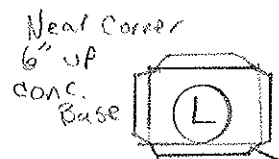
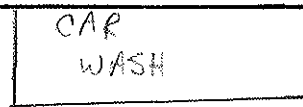
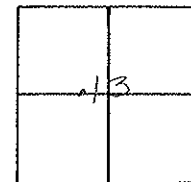
TOWNSHIP ADAMS

SECTION 13

T. 24 S. R. _____

TYPE MONUMENT Reset
PK Nail + Washer
 ON SURFACE - BELOW Yes
~~LEFT - C~~ PAV'T. - ~~RIGHT~~ center
15.2 TO RT EDGE PAVEMENT
 S.L.M. 709 + 34

8-11-93



PERSONNEL TITLE PERSONNEL TITLE

BIAY

COUNTY Lucas

DATE 5/19/61

CREW

S. R. #2

WEATHER clear

SEC. Reynolds Rd. to T.T.R.R.

TEMP 75°

DESCRIPTION Ref To Mon.

JOB NO. BLAS 10/3/61

LEFT

CENTER LINE

RIGHT

#7

