

O.D.O.T. DISTRICT 2 SURVEY OFFICE (USE ONLY)

PERSONNEL \_\_\_\_\_

REFERENCE NO. 28 E

SHEET 12 OF 13

NOTES TOMSIK  
 H.C. CHOPPURESS  
 R.C. ORLOK  
DRAUR/NORRIS

DATE 9/8/60  
 WEATHER CLOUDY  
 TEMP. 70°

ROUTE SR 2  
 COUNTY LUCAS  
 TOWNSHIP ADAMS  
 SECTION 13

DWG BY NIESE PID \_\_\_\_\_

T 2 US R E

TYPE MONUMENT ROOFING NAIL

ON SURFACE - ~~BELOW~~ ON

OFFSET ☉ PAVEMENT \_\_\_\_\_ LT : RT

\_\_\_\_\_ TO \_\_\_\_\_ EDGE PAVEMENT

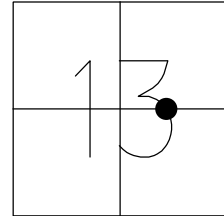
STATION: 739+25.62

HORZ. DATUM: \_\_\_\_\_

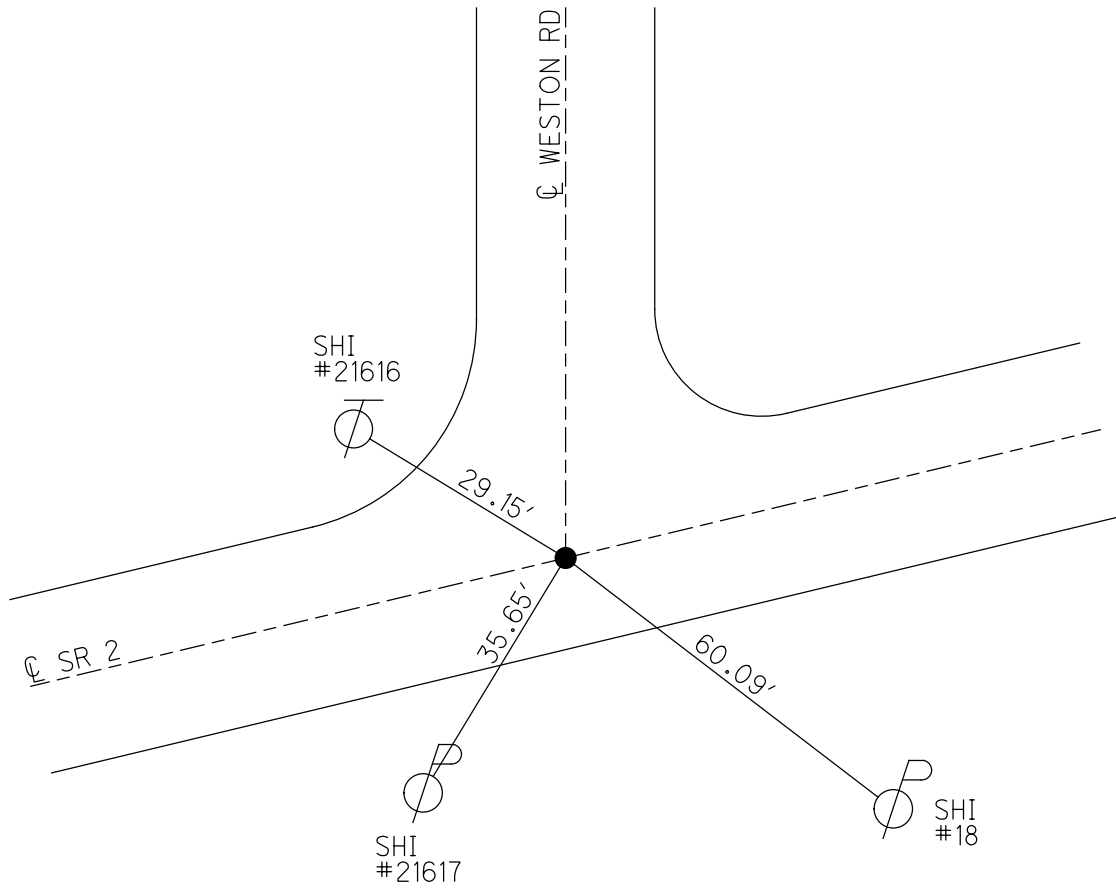
GEOID: \_\_\_\_\_

GRID: NORTHING: \_\_\_\_\_

EASTING: \_\_\_\_\_



RECORD:  
 FD ROOFING NAIL  
 9/8/60



PERSONNEL TITLE PERSONNEL TITLE

COUNTY Lucas

DATE Sept. 9-60

Tomsic

Chappuiss

Orluk

Draur

Norris

S. R. LU-2

WEATHER Cloudy

SEC. \_\_\_\_\_

TEMP. 70°

DESCRIPTION Monument Reference

S.R. #2 & Byrne Rd.

JOB NO. \_\_\_\_\_

LEFT

CENTER LINE

RIGHT

