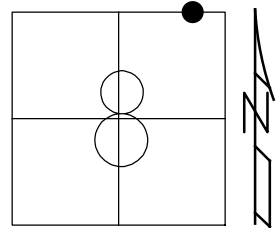


O.D.O.T. DISTRICT 2 SURVEY OFFICE (USE ONLY)

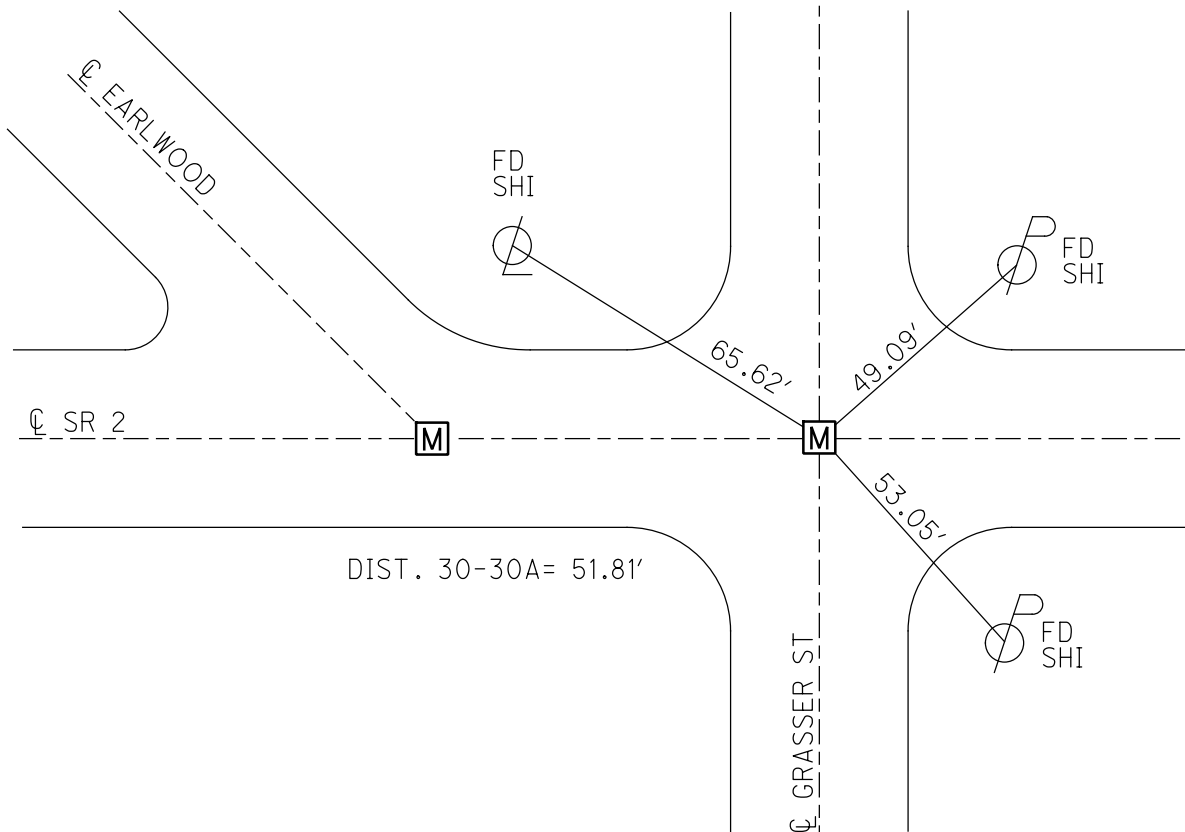
PERSONNEL _____ REFERENCE NO. 30 A SHEET 3 OF 3
 NOTES CURTIS DATE 6/1/88 ROUTE SR 2
 H.C. HOUSEHOLDE WEATHER WARM COUNTY LUCAS
 R.C. _____ TEMP. 90° TOWNSHIP CITY OF OREGON
 DWG BY RHOADES PID 108421 SECTION 8
 T 10 S R 8 E

TYPE MONUMENT MONBOX W/ 1" IPIN
 ON SURFACE - ~~BELOW~~ ON _____
 OFFSET \odot PAVEMENT ON _____ LT : RT
 _____ TO _____ EDGE PAVEMENT
 STATION: 1128+67.98



HORZ. DATUM: NAD83 2011 GEOID: 2012A
 GRID: NORTHING: 719255.321 EASTING: 1698139.755

RECORD:
 FD MONBOX
 W/1" IPIN
 6/1/88, DC
 STA1128
 10/7/19, DSA



O.D.O.T. DISTRICT 2 SURVEY OFFICE

PERSONNEL

REFERENCE NO. 30/30-A SHEET 2 OF 5

NOTES D. CURTIS

H.C. J. HOUSEHOLDER

R.C. _____

DATE 6-1-88

WEATHER WARM

TEMP. 90° ±

ROUTE S. R. #2

COUNTY LUGAS

TOWNSHIP _____

SECTION OTT. CO. LINE W.

T _____ R _____

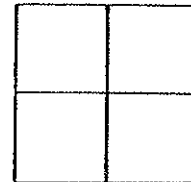
TYPE MONUMENT 1" I. PINS IN MON. BOXES

ON SURFACE - BELOW 1" BELOW

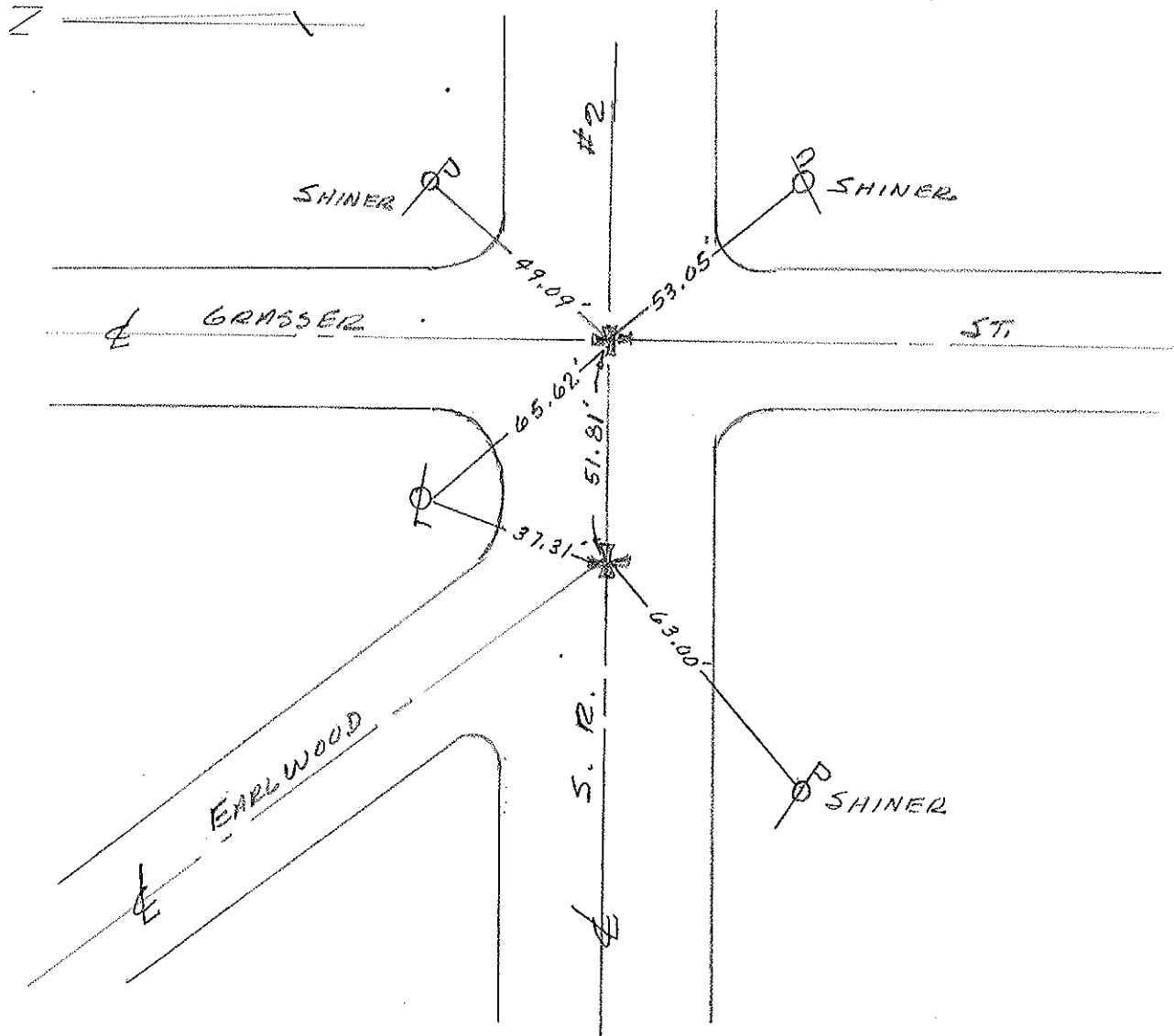
LEFT- & PAV'T. - RIGHT & PAV'T

TO _____ EDGE PAVEMENT

S.L.M. 1127+83 & 1128+35



OK 7/8/88 RES



PERSONNEL	TITLE	PERSONNEL	TITLE	COUNTY	DATE	WEATHER	TEMP.
Stone	Notes			Lucas	9 July 71	Warm	80°
Michalak	H.C.			S. R. #2			
Schrader	P.C.			SEC. D.H. Co. Line West			

DESCRIPTION References to Control Points JOB NO. _____
 LEFT CENTER LINE RIGHT

30

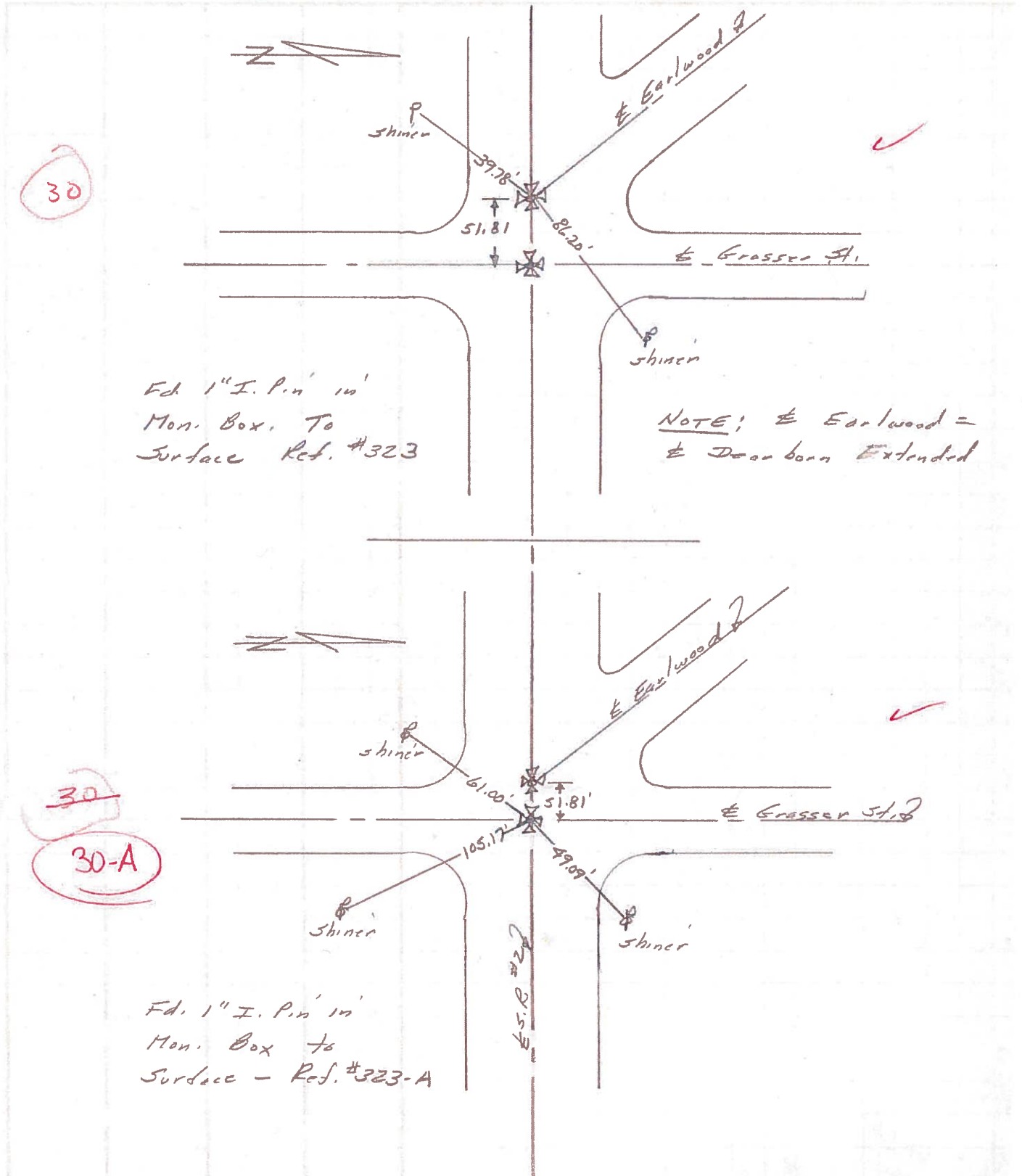
Fd. 1" I. Pin' in'
 Mon. Box. To
 Surface Ref. #323

NOTE: E Earwood =
 E Dearborn Extended

30

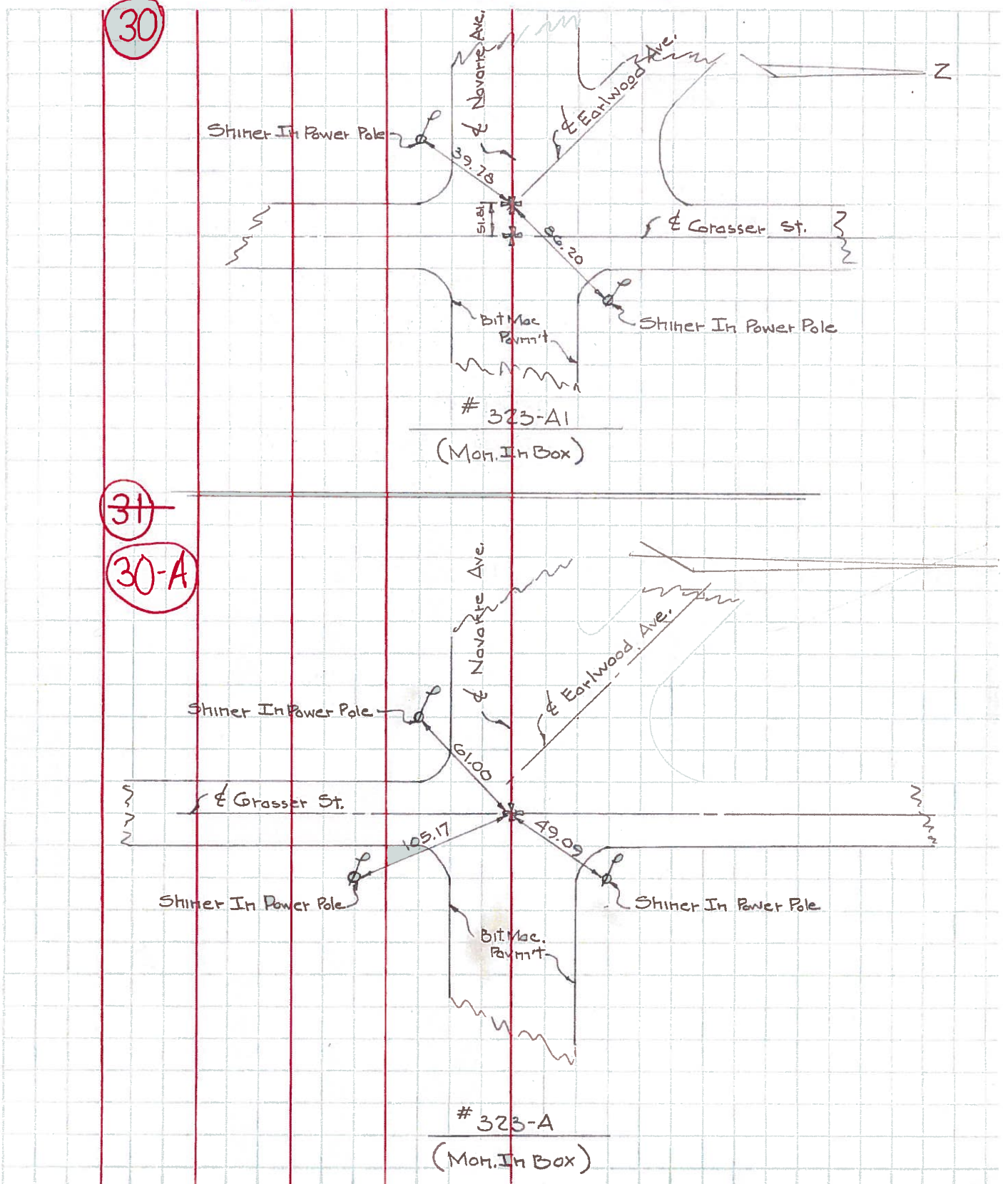
30-A

Fd. 1" I. Pin' in'
 Mon. Box to
 Surface - Ref. #323-A



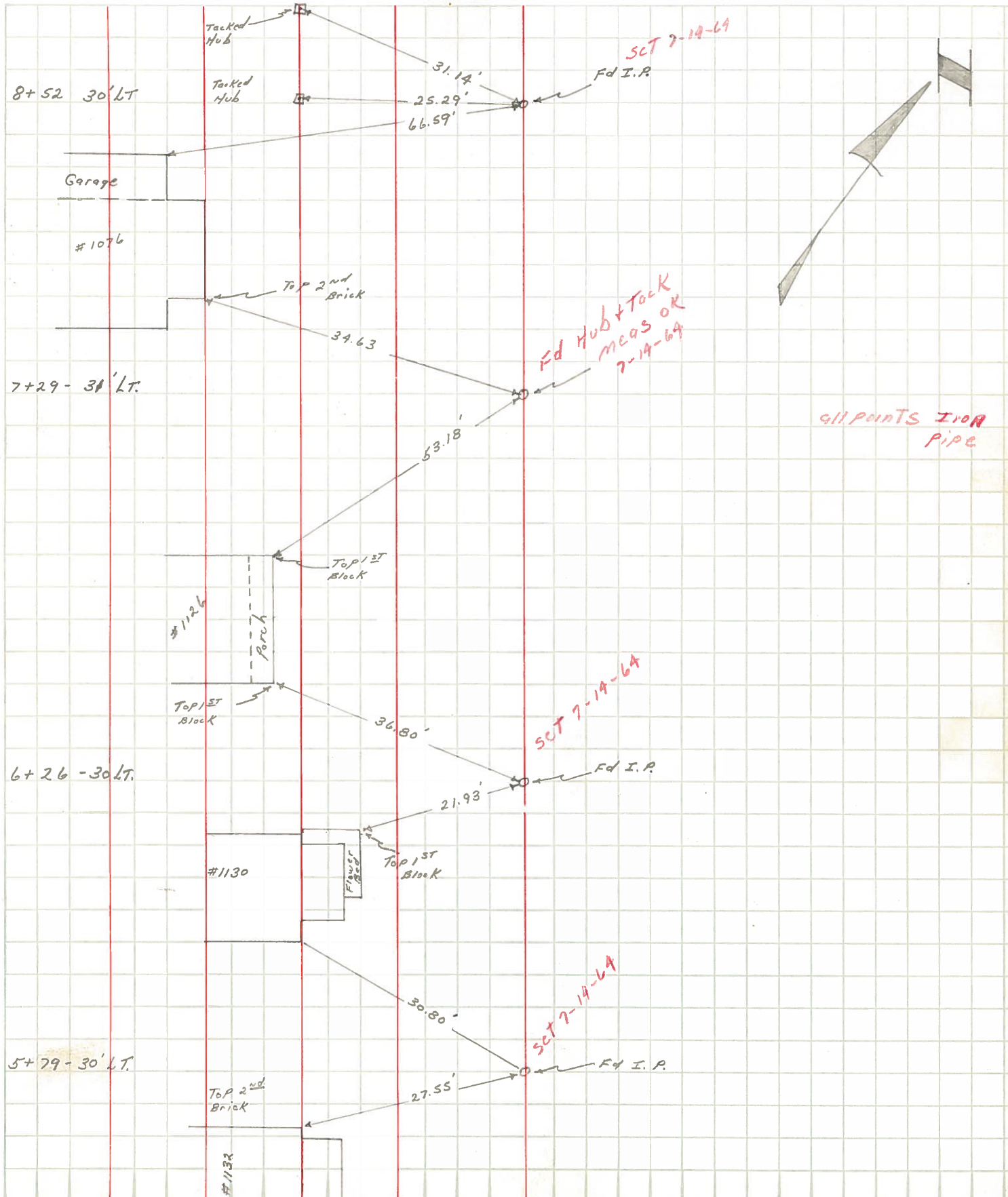
PERSONNEL	TITLE	PERSONNEL	TITLE	COUNTY	Lucas	DATE	Jan. 28, 1966
W. Denno				S. R.	2	WEATHER	Sunny
D. Curtis				SEC.		TEMP.	8°
D. Granata							
F. Omev							

DESCRIPTION Navarre Ave - Ref. Mon. & Control Points JOB NO. _____



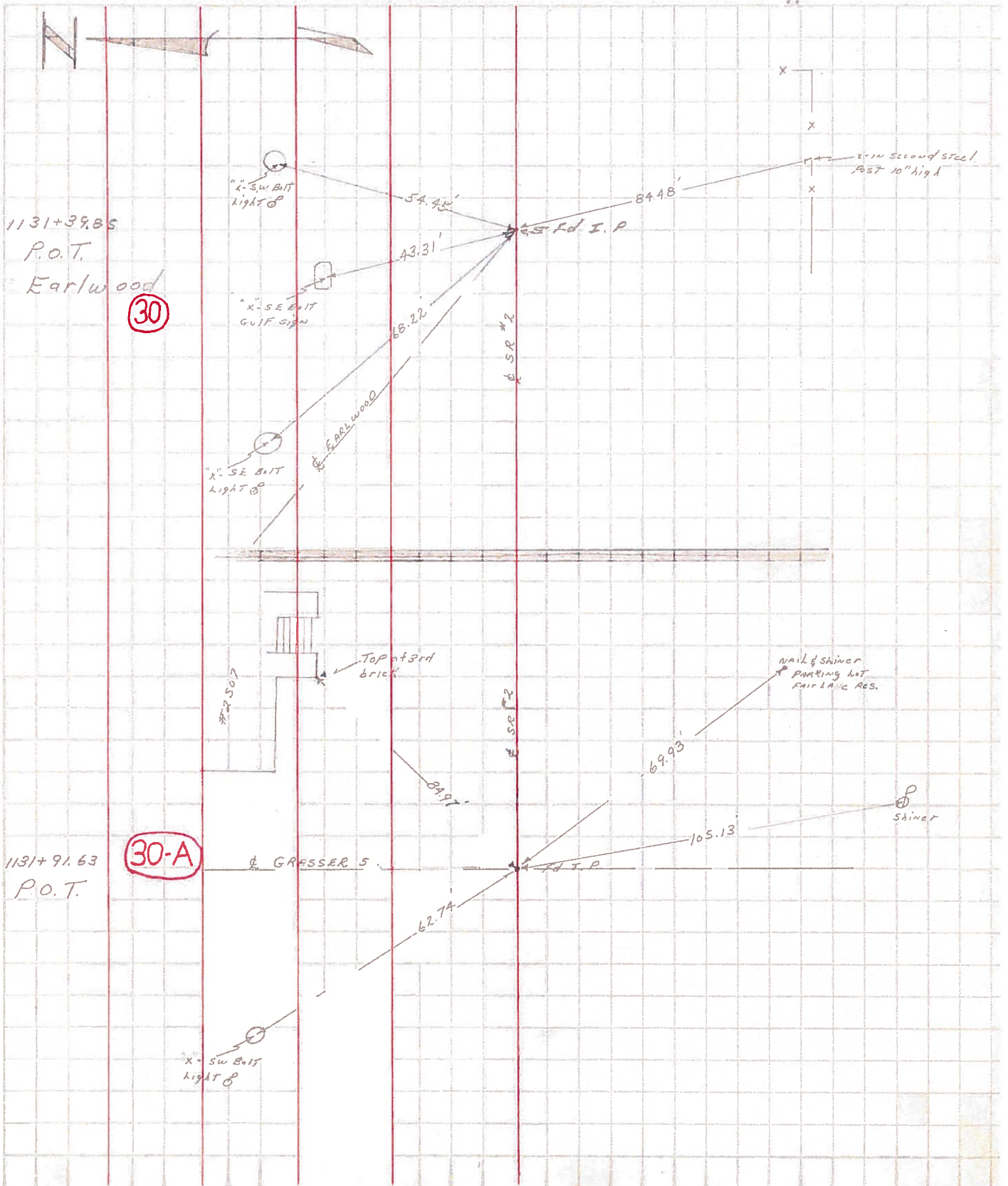
PERSONNEL	TITLE	PERSONNEL	TITLE	COUNTY	DATE	WEATHER	TEMP.
<u>Blay</u>	<u>P.C.</u>	<u>Buhler</u>		<u>Lucas</u>	<u>4/2/63</u>	<u>Clear</u>	<u>70°</u>
<u>Pelevus</u>				<u>#2</u>			
<u>Chappuis</u>	<u>Tape</u>			<u>Earlwood</u>			
<u>Chappuis</u>	<u>Tape</u>						

DESCRIPTION Ref to Property corners West Side Earlwood JOB NO. _____



PERSONNEL	TITLE	PERSONNEL	TITLE	COUNTY	DATE
Blay	P.C.	Medford	Tape	Lucas	3/27/63
Pelousas	?			S. R. #2	WEATHER CLEAR
Chappuis	Tape				
Bufler	Paint			SEC.	TEMP. 55°

DESCRIPTION Ref - Mon + control Points - etc. JOB NO. _____



PERSONNEL TITLE PERSONNEL TITLE

COUNTY Lucas

DATE 4-15-53

S. R. #2

WEATHER

SEC. A, B, C, D, H, G,

TEMP.

DESCRIPTION Jerusalem Rd.

JOB NO.

LEFT

CENTER LINE

RIGHT

Toledo City Limits (mon.) - set P.L. nail		N.E. to x-in base of E.P. signal	43.22'
		N.W. to fire Hyd. base	33.55'
		W. of inside W. rail of track	4.45'
	#321	S.W. to x-in base of E.P. Xing Signal	22.83'
		Cyclone fence cor. post	54.65'
1/2 Dover St. between W. L.E. R.R. & Toledo Terminal R.R. fd. + - set P.L.		N.E. to shiner in T.P.	35.20'
		N.W. to shiner in P.P.	34.59'
		S.E. to shiner in T.P.	65.90'
		N.E. to N.W. cor. conc. blk. bldg.	82.35'
	#321-A		
1/2 mi. E. of city limits I. pin. Conc.		S.W. to x-in N.E. cor. of conc br. support.	25.01'
		N.W. to x-in S.E. cor. of conc bridge support	24.86'
	#322	S.E. to shiner in T.P.	52.26'
		N.E. to shiner in P.P.	54.66'
Dearborn St. I. pin. in conc.		S.E. to shiner in pole	38.15'
		S. to shiner in 15" E-1m	24.69'
		S.W. to shiner in T.P.	41.85'
	#323	N.E. to shiner in pole	53.00'
Grasser St. R.E. spike	(30-A)	S.W. to base fire Hyd.	43.98'
		N.E. to base P.P.	36.77'
		S.E. to base T.P.	35.02'
	#323-A		