

O.D.O.T. DISTRICT 2 SURVEY OFFICE (USE ONLY)

PERSONNEL _____

REFERENCE NO. 31

SHEET 4 OF 18

NOTES CURTIS

DATE 6/1/88

ROUTE SR 2

H.C. HOUSEHOLDER

WEATHER WARM

COUNTY LUCAS

R.C. _____

TEMP. 90°

TOWNSHIP CITY OF OREGON

SECTION 9

DWG BY NIESE PID _____

T 10 S R 8 E

TYPE MONUMENT MONBOX W/ 1" IPIN

~~ON SURFACE~~ - BELOW 1"

OFFSET \odot PAVEMENT ON LT : RT

- TO - EDGE PAVEMENT

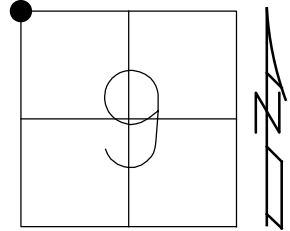
STATION: 1135+00

HORZ. DATUM: _____

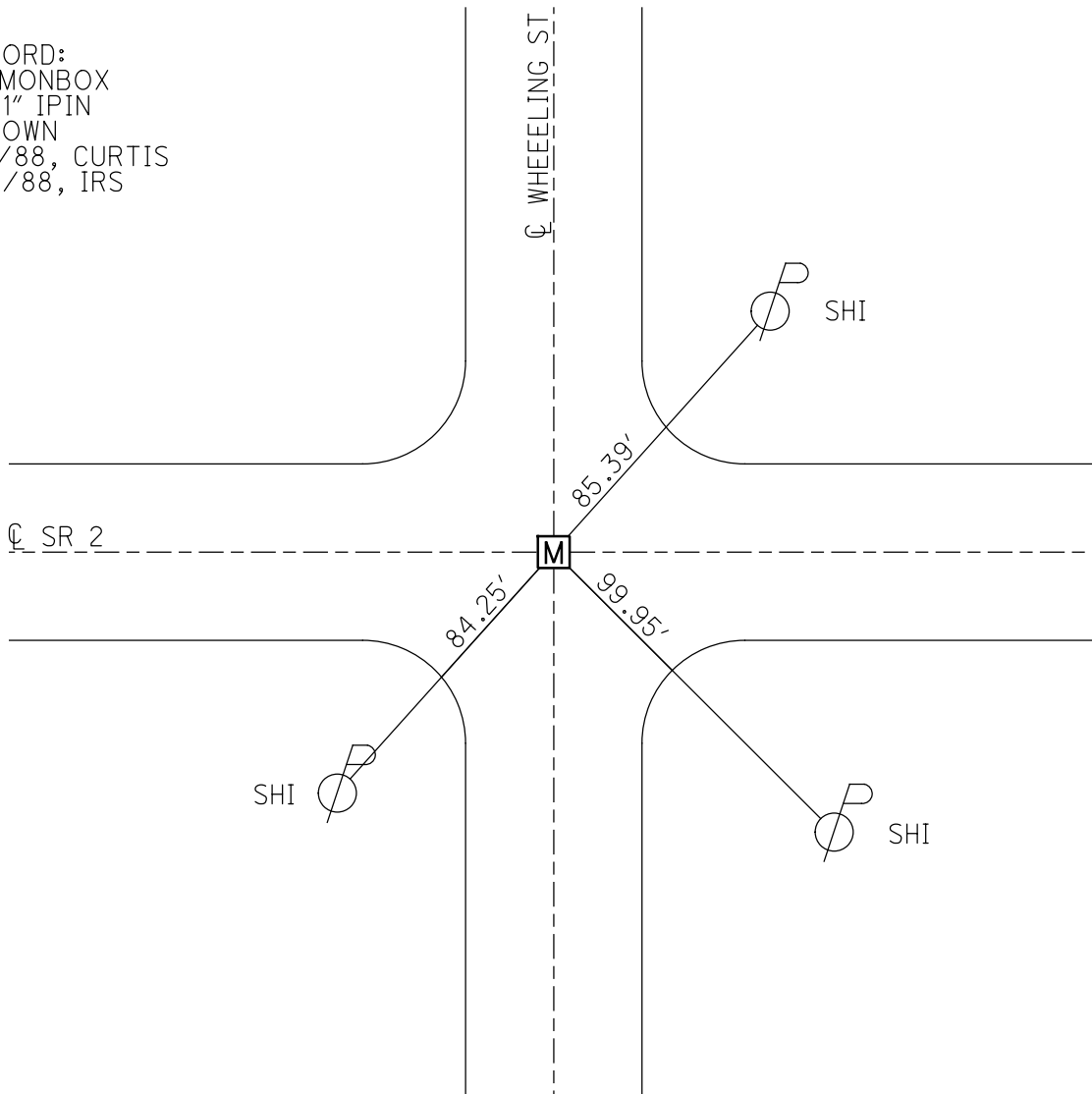
GEOID: _____

GRID: NORTHING: _____

EASTING: _____



RECORD:
FD MONBOX
W/ 1" IPIN
1" DOWN
6/1/88, CURTIS
7/8/88, IRS



O.D.O.T. DISTRICT 2 SURVEY OFFICE

PERSONNEL

REFERENCE NO. 31

SHEET 3 OF 5

NOTES D. CURTIS

H.C. J. HOUSEHOLDER DATE 6-1-88

R.C. _____ WEATHER WARM

_____ TEMP. 90°±

ROUTE S.R. #2

COUNTY LUCAS

TOWNSHIP _____

SECTION OTT. CO. LINE W.

T _____ R _____

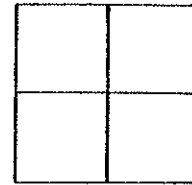
TYPE MONUMENT 1" I. PIN IN MON. BOX

ON SURFACE - BELOW 1" BELOW SURFACE

LEFT - & PAV'T. - RIGHT & PAV'T

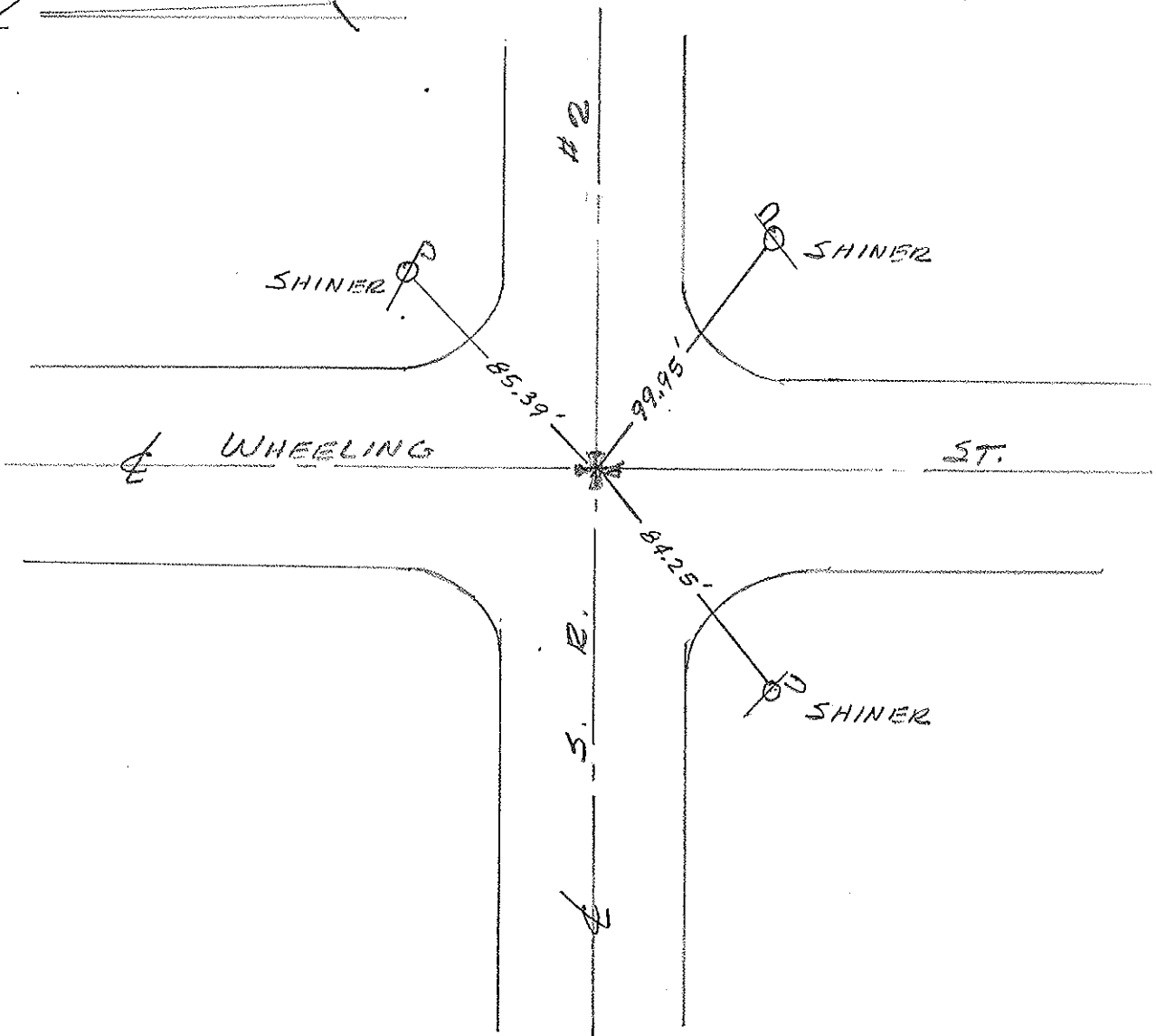
_____ TO _____ EDGE PAVEMENT

S.L.M. 1135 + 00



Z

OK 7/8/88 145

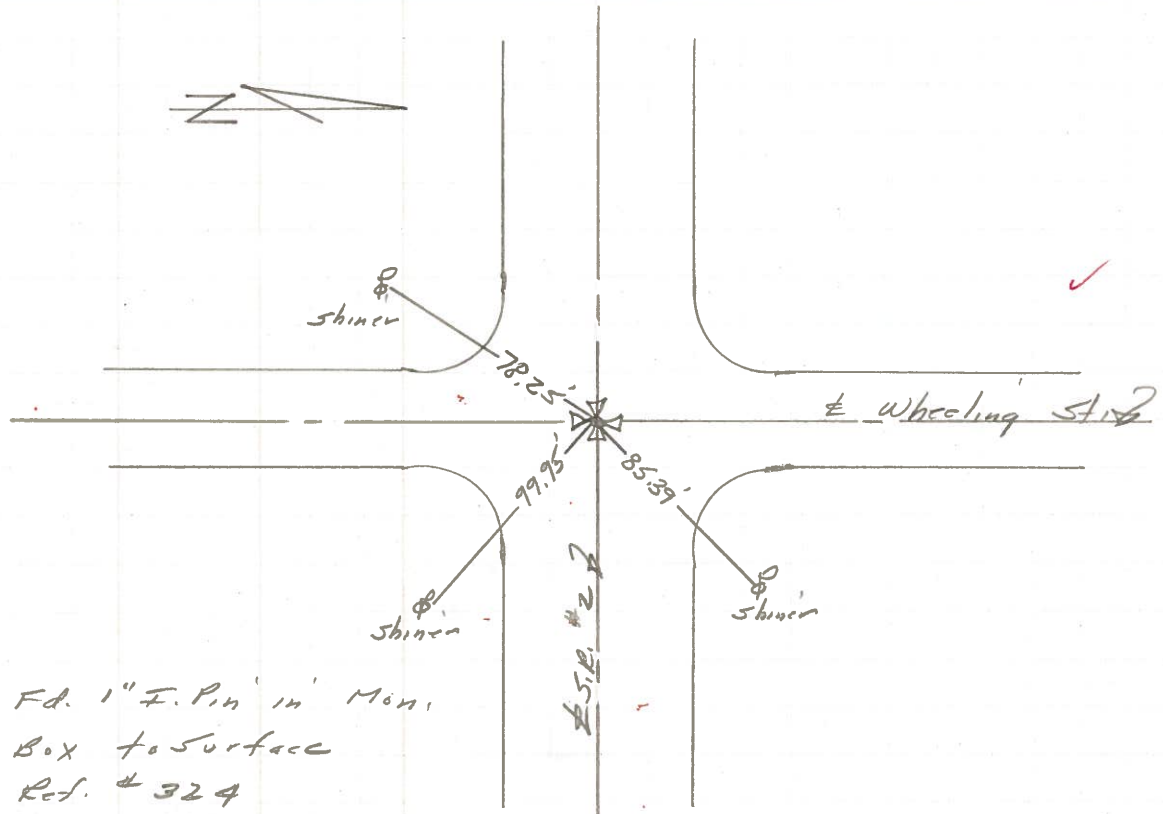


PERSONNEL	TITLE	PERSONNEL	TITLE
Stone	Notes		
Michalek	H.C.		
Schrader	P.G.		

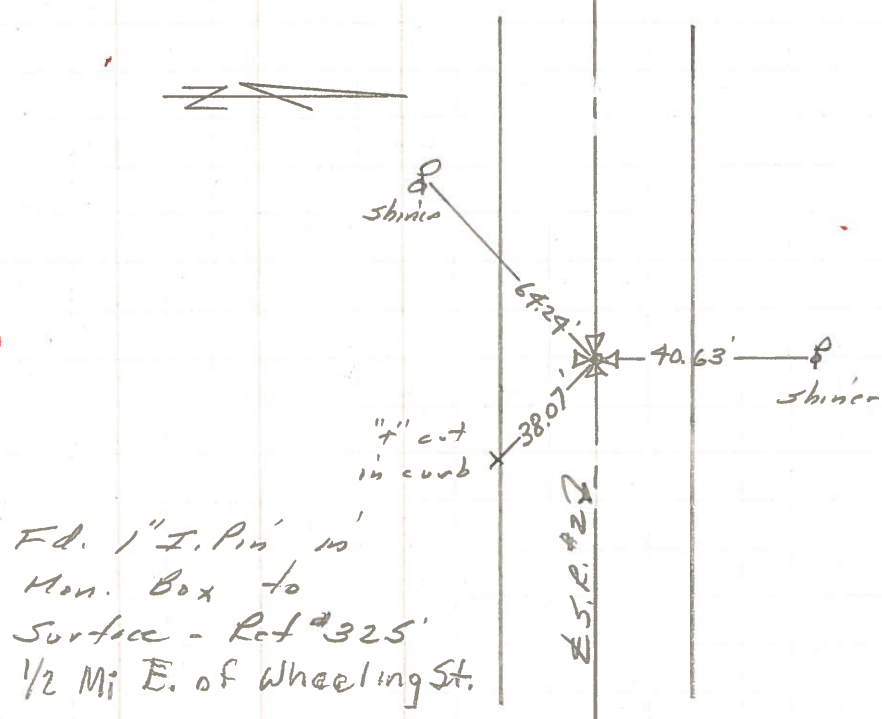
COUNTY Lucas DATE 9 July 71
 S. R. #2 WEATHER Warm
 SEC. Off. Co. Line West TEMP. 80°

DESCRIPTION References to Control Points JOB NO. _____
 LEFT CENTER LINE RIGHT

31

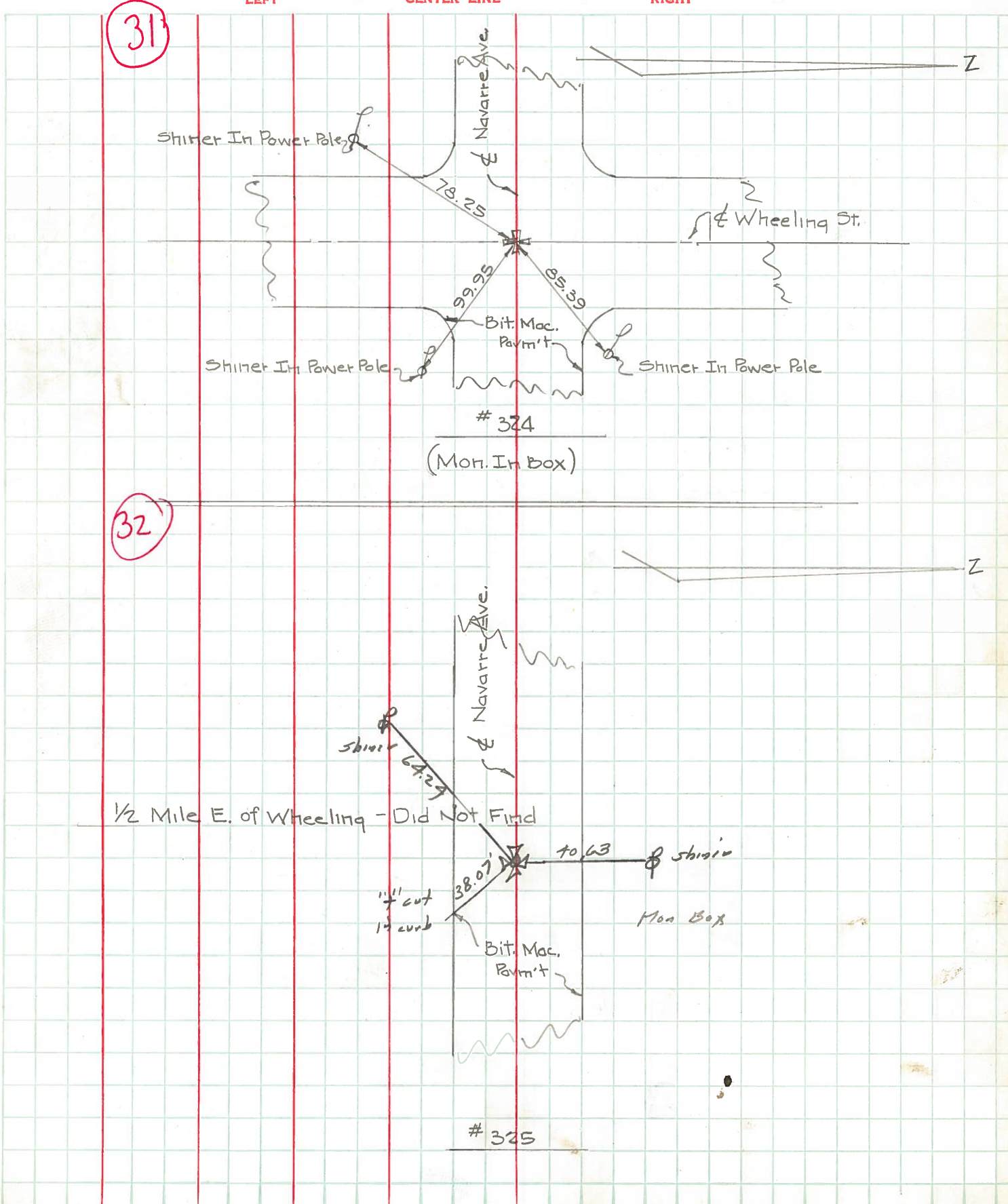


32



PERSONNEL	TITLE	PERSONNEL	TITLE	COUNTY	DATE	WEATHER	TEMP.
W. Denno				Lucas	Jan. 28, 1966	Sunny	6°
D. Curtis				S. R.	2		
D. Coronata				SEC.			
F. Omey							

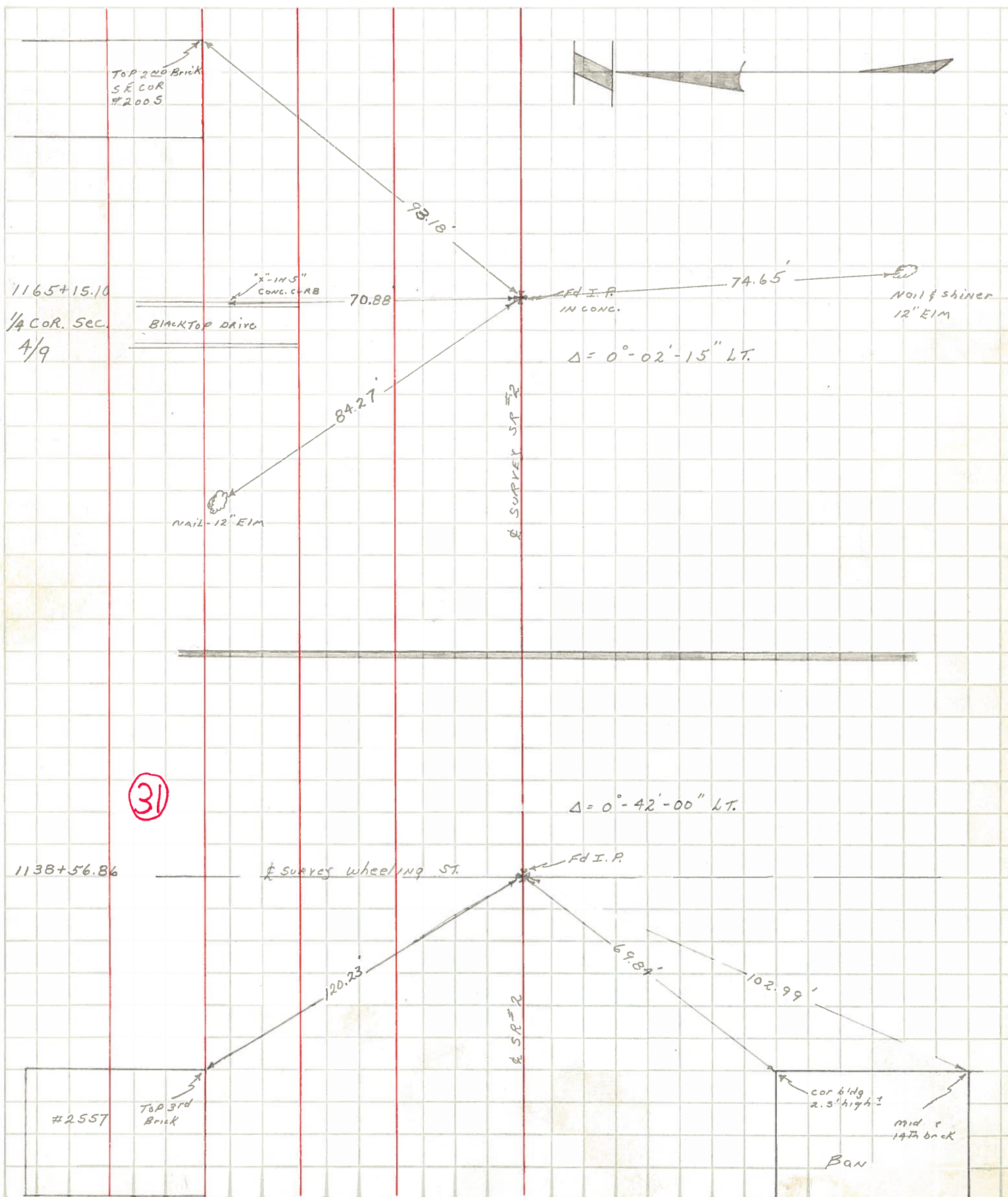
DESCRIPTION Navarre Ave. - Ref. Mon. & Control Points JOB NO. _____



PERSONNEL	TITLE	PERSONNEL	TITLE	COUNTY	DATE
Blay	P.C.	Medford	Tape	LUCAS	3/27/63
Chappuis	Tape			S. R. #2	WEATHER Clear
PeLouses					TEMP. 55°
Buhler				SEC.	

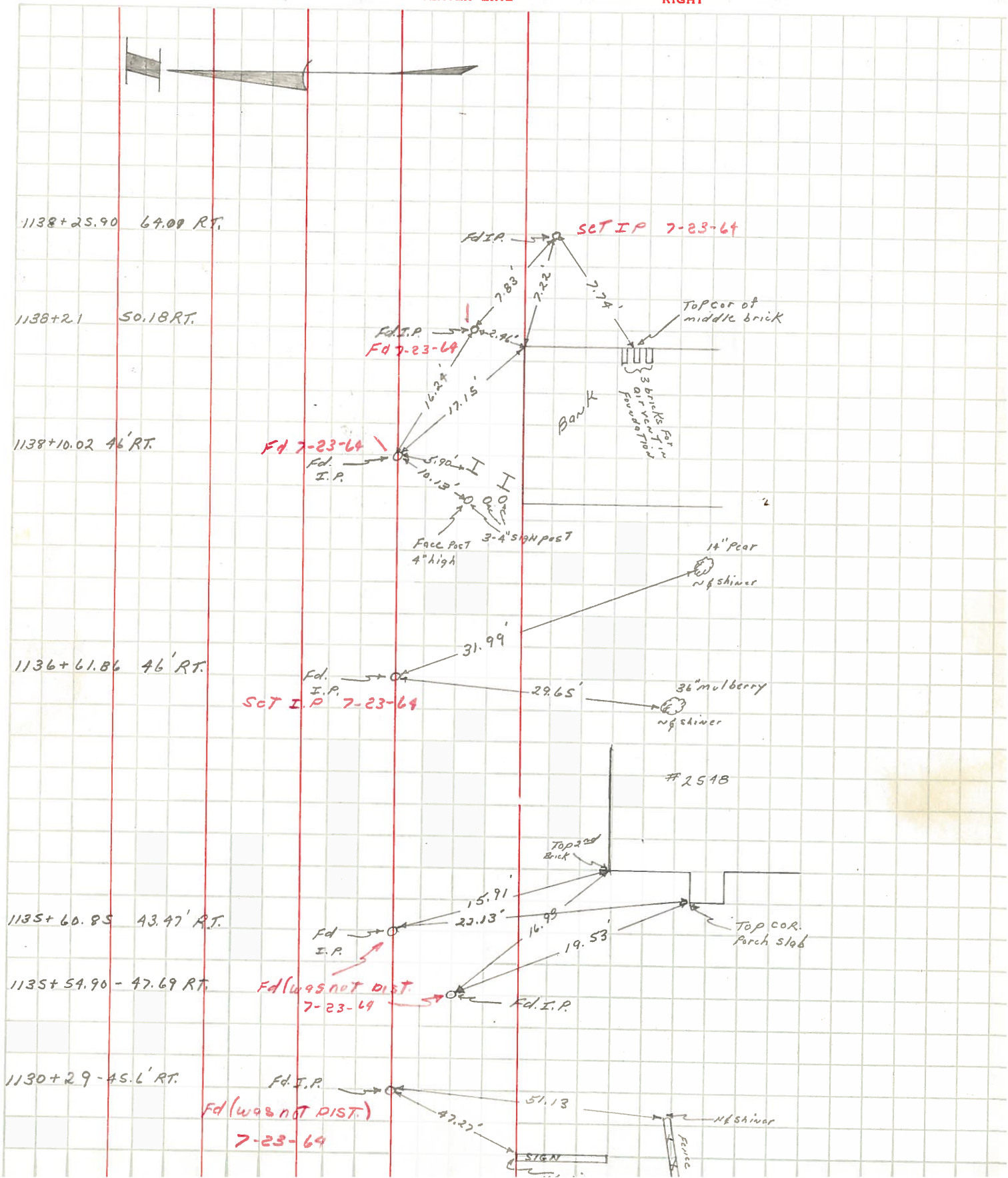
DESCRIPTION Ref - Mon & Control POINTS - ETC. JOB NO. _____

sid



PERSONNEL	TITLE	PERSONNEL	TITLE	COUNTY	DATE	WEATHER	TEMP.
Blay	P.C.	Buhler		Lucas	4/2/63	clear	70°
Chappuis	Tape			S. R. #2			
Medford	Tape						
Pelevses				SEC.			

DESCRIPTION Ref To Property corners (south side) JOB NO. _____



PERSONNEL TITLE PERSONNEL TITLE

COUNTY LUCAS

DATE 3/29/63

BLAY

P.C.

S. R. #2

WEATHER clear

SEC. _____

TEMP. 55°

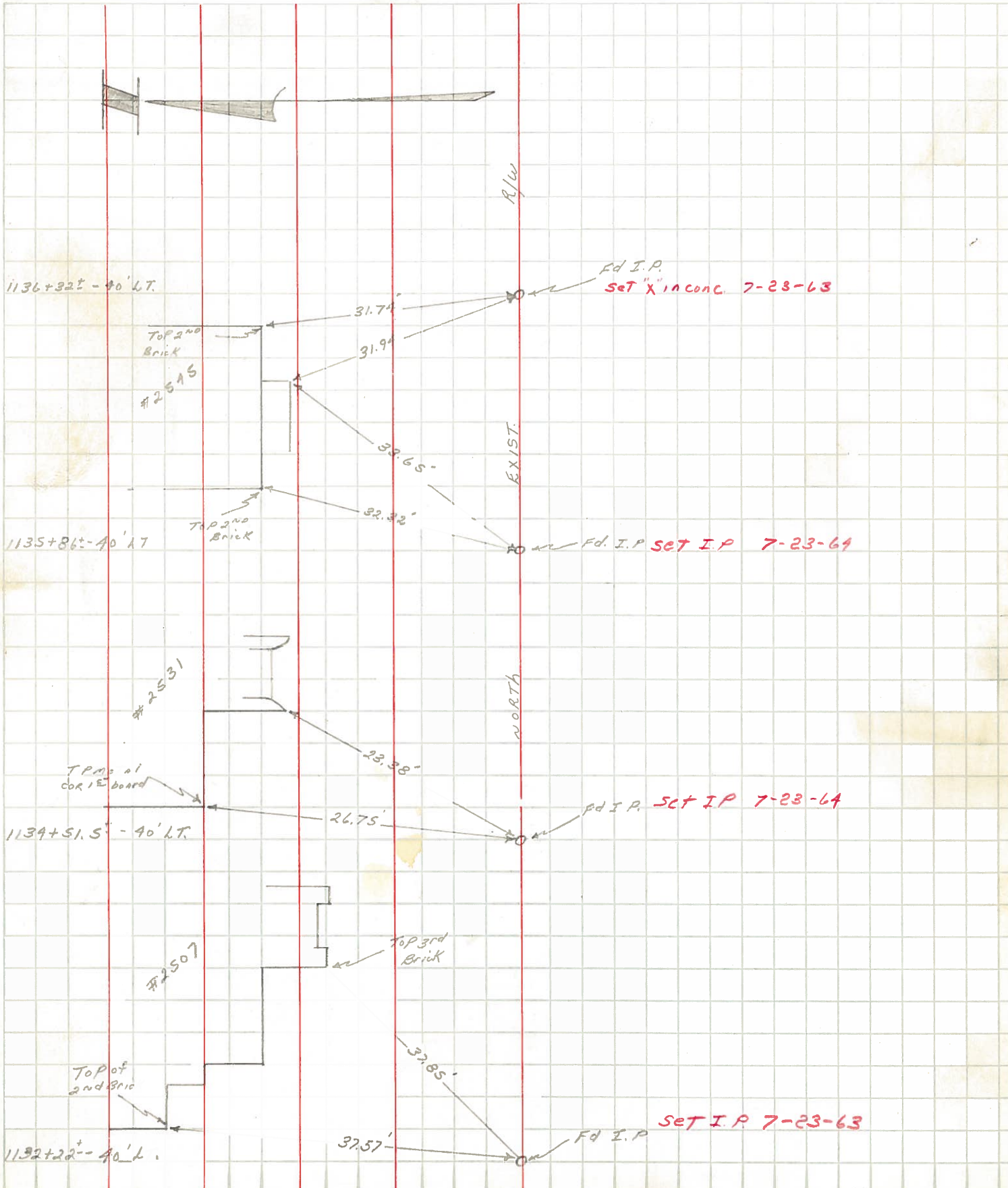
DESCRIPTION Ref To Property CORNER. (North side)

JOB NO. _____

LEFT

CENTER LINE

RIGHT



PERSONNEL TITLE PERSONNEL TITLE

COUNTY Lucas DATE 4-16-53

S. R. #2 WEATHER

SEC. TEMP.

DESCRIPTION LEFT CENTER LINE RIGHT JOB NO.

DESCRIPTION	LEFT	CENTER LINE	RIGHT	JOB NO.
Wheeling St. I. pin in conc.	(31) #324		N.E. to shiner in Guy pole 70.51' S.E. to shiner in T.P. 59.69' S.W. to shiner in P.P. 47.77' N.W. to shiner in P.P. #14206 48.51' Brick cor. post to brick bldg. 49.43'	
1/2 mi. E. of Wheeling St. I. pin.	(32) #325		N.E. to shiner in P.P. 77.42' S.E. to N.W. cor. brick fdn of ho. 69.27' S. to x-in steel A.P. 28.53' S.W. to shiner in T.P. 30.07'	
Coy Ed. mon.	(33) #326		N.E. to shiner in P.P. 39.52' S.E. to shiner in P.P. 58.85' S.W. to shiner in T.P. & cable 58.52' N.W. to shiner in P.P. 36.44'	
1/2 mi. East of Coy Ed. (mon.)	(34) #327		S.E. to shiner in T.P. 44.71' S.W. to shiner in T.P. 80.67' N.W. to shiner in P.P. 81.23'	
Lalendorf Ed. (mon.)	(35) #328		N.E. to shiner in P.P. 42.93' S.E. to shiner in cable pole 78.65' S.W. to shiner in T.P. & cable 38.91' N.W. to shiner in T.P. 64.25'	