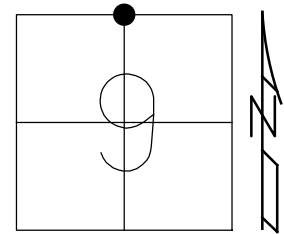


O.D.O.T. DISTRICT 2 SURVEY OFFICE (USE ONLY)

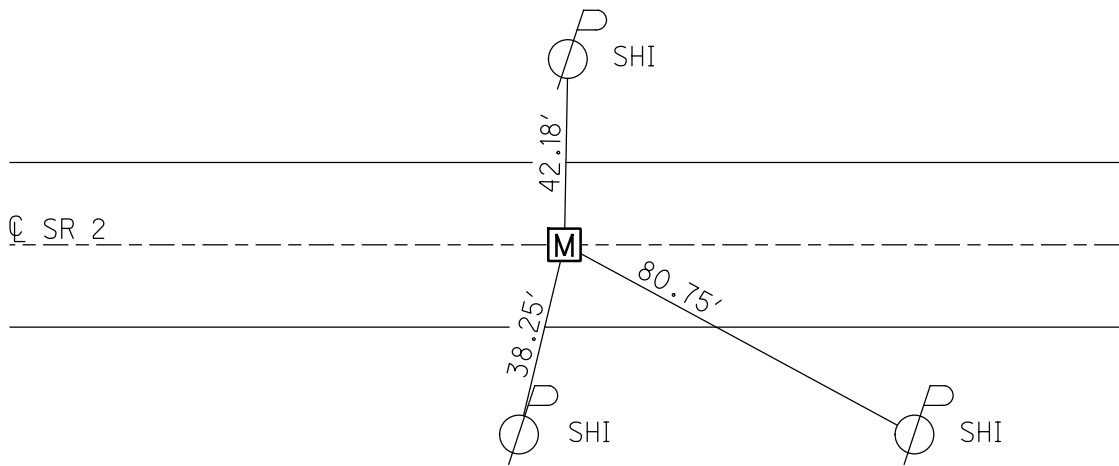
PERSONNEL _____ REFERENCE NO. 32 SHEET 5 OF 18
 NOTES CURTIS DATE 6/1/88 ROUTE SR 2
 H.C. HOUSEHOLDER WEATHER WARM COUNTY LUCAS
 R.C. _____ TEMP. 90° TOWNSHIP CITY OF OREGON
 DWG BY NIESE PID _____ SECTION 9
 T 10 S R 8 E

TYPE MONUMENT MONBOX W/ 1" IPIN
~~ON SURFACE~~ - BELOW 2"
 OFFSET ☉ PAVEMENT _____ ON _____ LT : RT
 _____ TO _____ EDGE PAVEMENT
 STATION: 1161+59



HORZ. DATUM: _____ GEOID: _____
 GRID: NORTHING: _____ EASTING: _____

RECORD:
 FD MONBOX
 W/ 1" IPIN
 2" DOWN
 6/1/88, CURTIS
 7/8/88, IRS



O.D.O.T. DISTRICT 2 SURVEY OFFICE

PERSONNEL

REFERENCE NO. 32

SHEET 4 OF 5

NOTES D. CURTIS

H.C. J. HOUSEHOLDER DATE 6-1-88

R.C. _____ WEATHER WARM

_____ TEMP. 90°±

ROUTE S. R. #2

COUNTY LUCAS

TOWNSHIP _____

SECTION OTT. Co. LINE W.

T. _____ R. _____

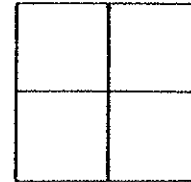
TYPE MONUMENT 1" I. PIN IN MON. BOX

ON SURFACE - BELOW 2" BELOW

LEFT- & PAV'T. - RIGHT & PAV'T

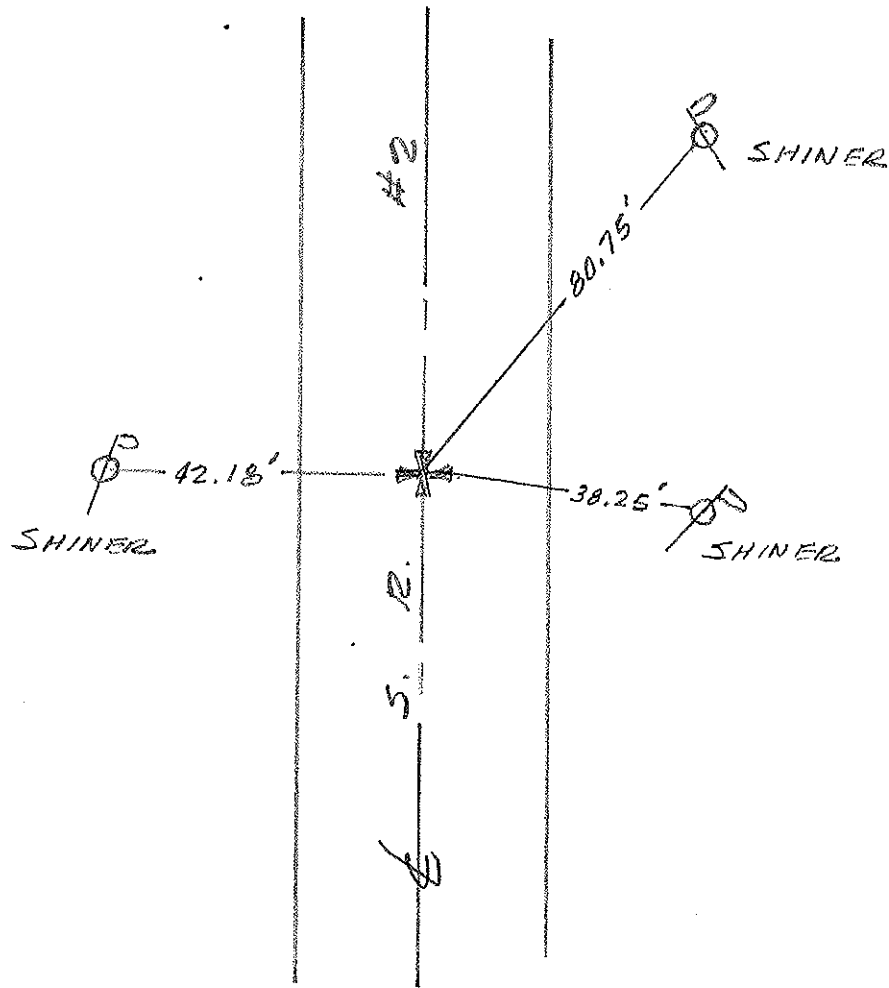
TO _____ EDGE PAVEMENT

S.L.M. 1161 + 59



Z _____

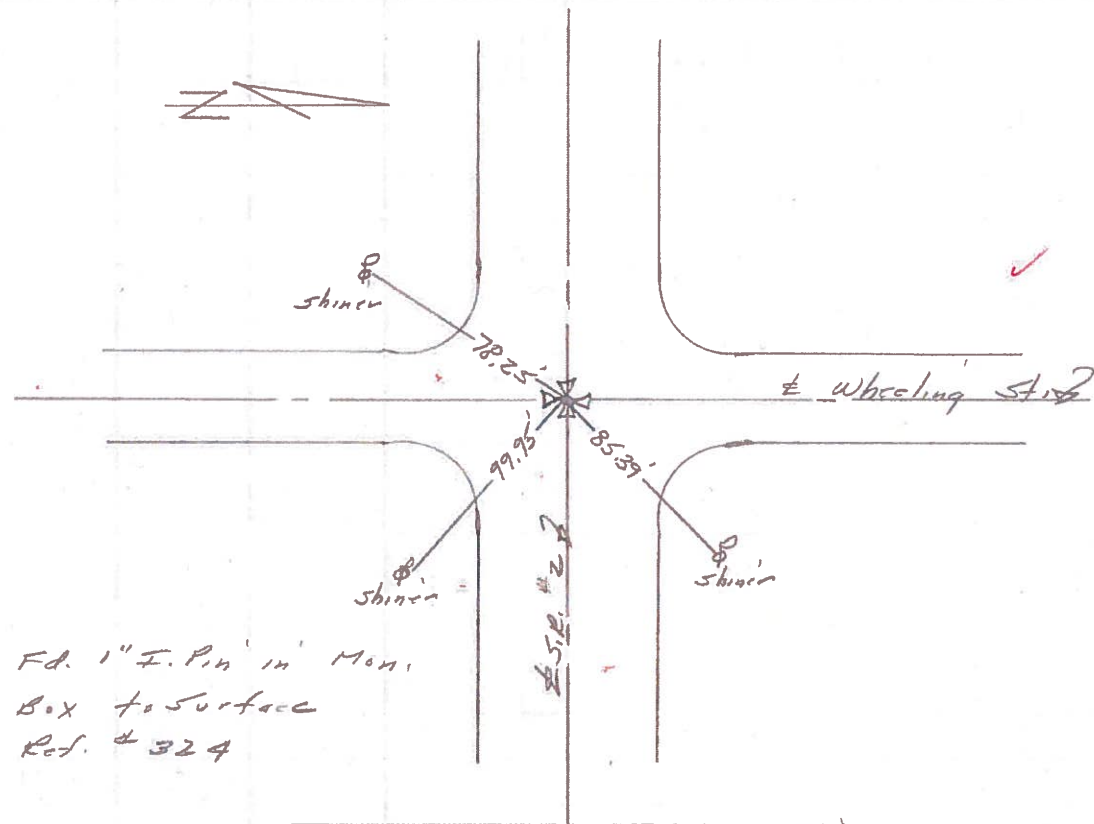
OK 7/8/88 JRS



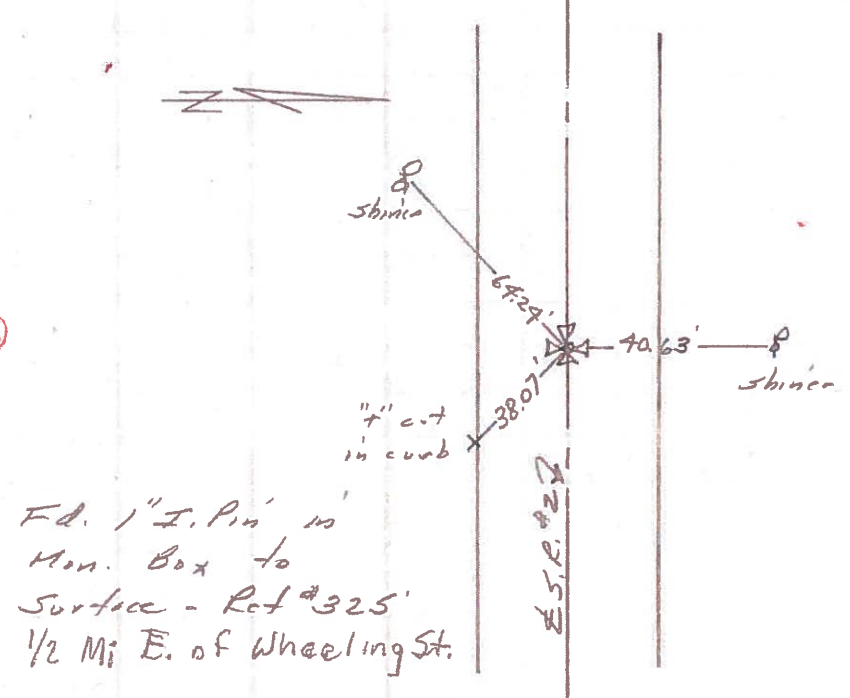
PERSONNEL	TITLE	PERSONNEL	TITLE	COUNTY	DATE	WEATHER	TEMP.
Stone	Notes			Lucas	9 July 71	Windy	80°
Michalski	H.C.			#2			
Schroder	P.C.			SEC. 04. Co. Line West			

DESCRIPTION References to Control Points JOB NO. _____

31

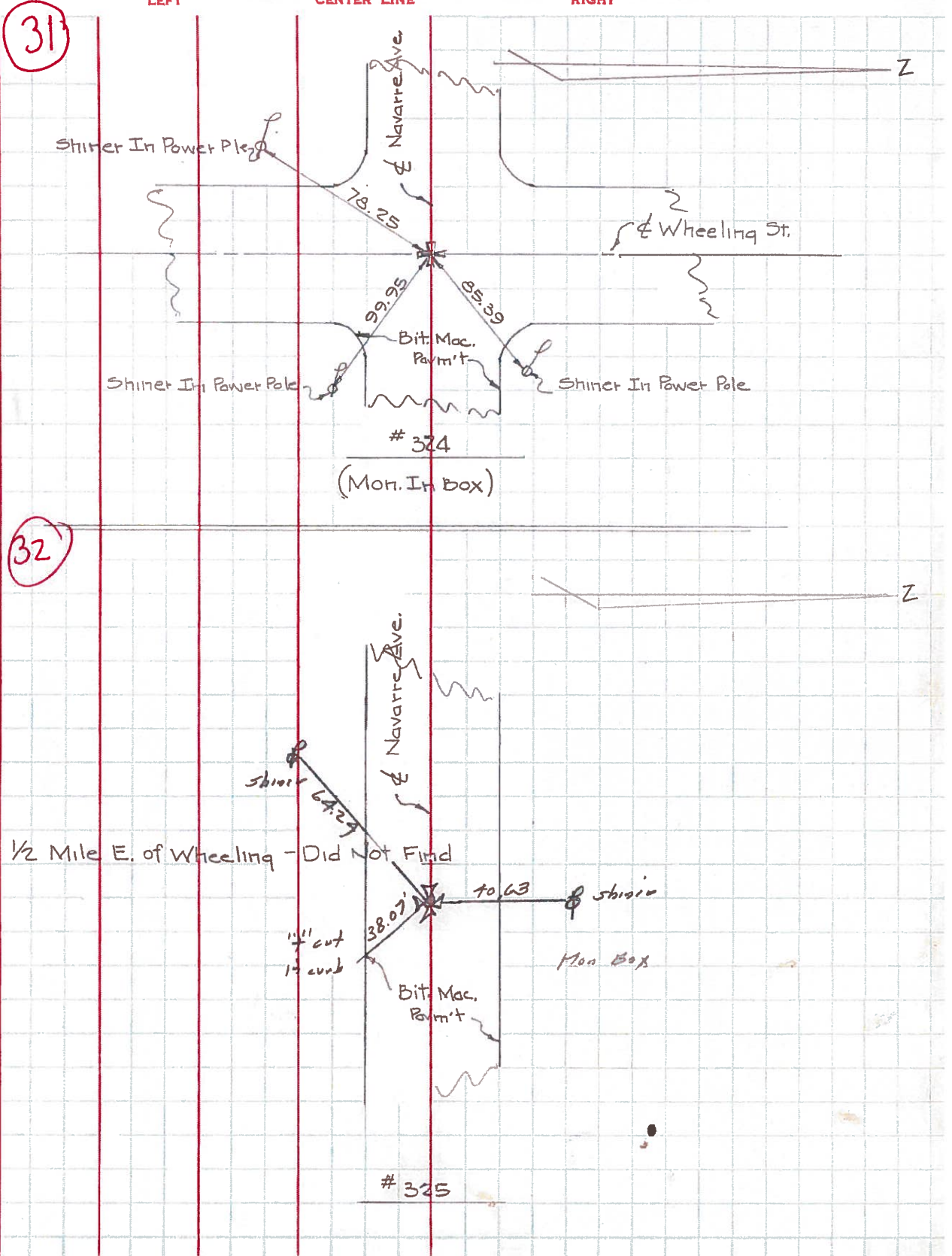


32

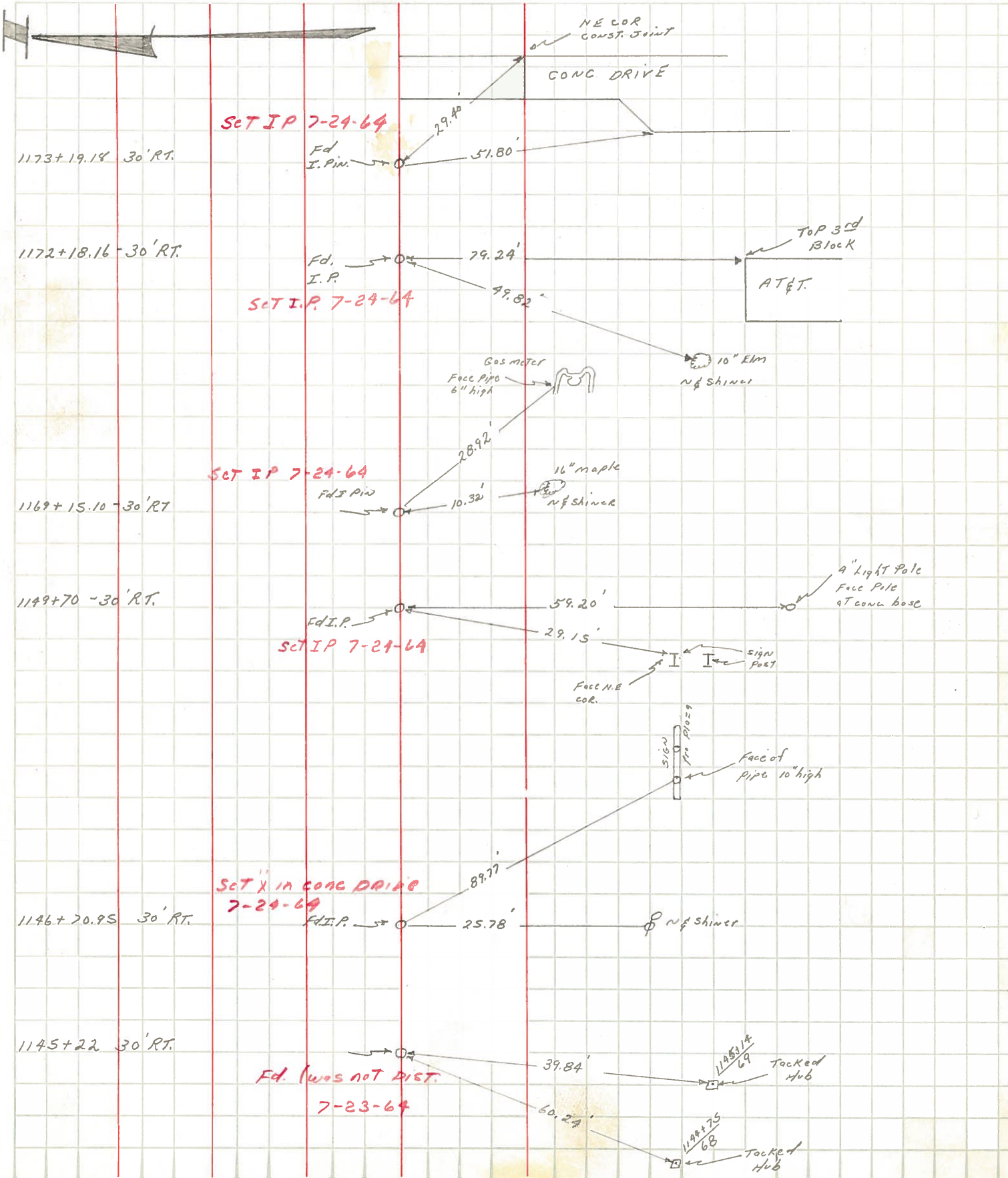


PERSONNEL	TITLE	PERSONNEL	TITLE	COUNTY	DATE	WEATHER	TEMP.
W. Derrico				Lucas	Jan. 28, 1966	Sunny	6°
D. Curtis				S. R.	2		
D. Coronata				SEC.			
E. Omev							

DESCRIPTION Navarre Ave. - Ref. Mon. & Control Points JOB NO. _____

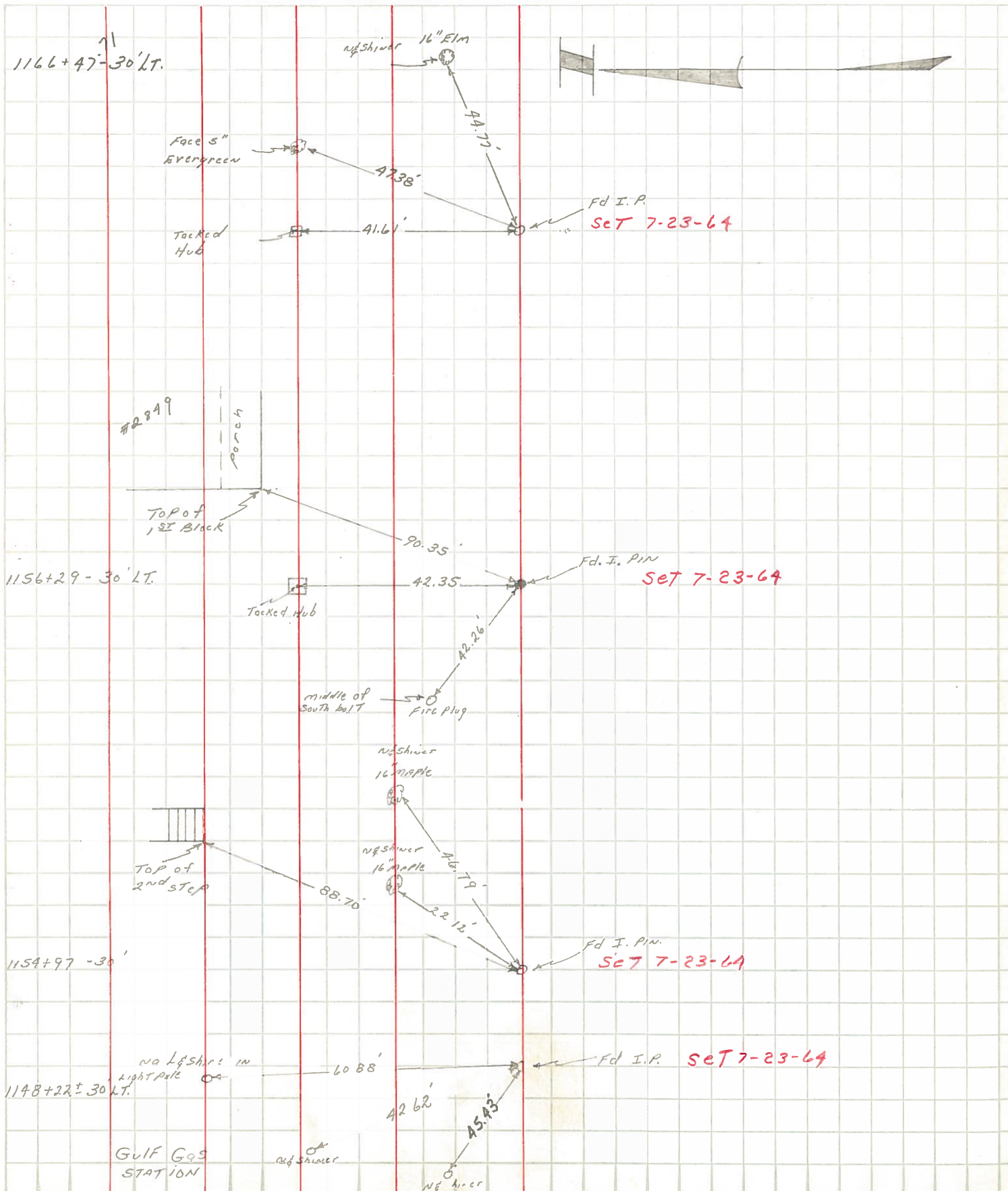


PERSONNEL	TITLE	PERSONNEL	TITLE	COUNTY	DATE
Blay	P.C.	Buhler		Lucas	4/3/63
Chappuis	Flag			S. R. #2	WEATHER clear.
Medford	Flag			SEC.	TEMP. 62°
Pelevses					
DESCRIPTION: Ref to Property corners (south side)				JOB NO.	



PERSONNEL	TITLE	PERSONNEL	TITLE	COUNTY	DATE	WEATHER	TEMP.
Blay	P.C.	Buhler		Lucas	4/1/63	Cloudy-RAIN	45
Chappuis	Tape			S. R. #2			
Medford	Tape			SEC.			
Peuses							

DESCRIPTION: Ref To Property CORNERS north side



PERSONNEL TITLE PERSONNEL TITLE

COUNTY Lucas

DATE 4-16-53

S. R. #2

WEATHER

SEC.

TEMP.

DESCRIPTION

LEFT

CENTER LINE

RIGHT

JOB NO.

Wheeling St.
I. pin in conc.

(31)
#324

N.E. to shiner in Guy pole 70.51'
S.E. to shiner in T.P. 59.69'
S.W. to shiner in P.P. 47.77'
N.W. to shiner in P.P. #14206 48.51'
Brick car. post to brick bldg. 49.43'

1/4 mi. E. of Wheeling St.
I. pin.

(32)
#325

N.E. to shiner in P.P. 77.42
S.E. to N.W. car. brick fan of ho. 69.27
S. to x-in steel A.P. 28.53
S.W. to shiner in T.P. 30.07

Coy Rd.
man.

(33)
#326

N.E. to shiner in P.P. 39.52'
S.E. to shiner in P.P. 58.85'
S.W. to shiner in T.P. & cable 58.52'
N.W. to shiner in P.P. 36.44'

1/2 mi. East of Coy Rd.
(man.)

(34)
#327

S.E. to shiner in T.P. 44.71'
S.W. to shiner in T.P. 80.67'
N.W. to shiner in P.P. 81.23'

La Hendorf Rd.
(man.)

(35)
#328

N.E. to shiner in P.P. 42.93'
S.E. to shiner in cable pole 78.65'
S.W. to shiner in T.P. & cable 38.91'
N.W. to shiner in T.P. 64.25'