

O.D.O.T. DISTRICT 2 SURVEY OFFICE (USE ONLY)

PERSONNEL _____

REFERENCE NO. 33

SHEET 6 OF 18

NOTES CURTIS DATE 6/1/88

H.C. HOUSEHOLDER WEATHER WARM

R.C. _____ TEMP. 90°

ROUTE SR 2

COUNTY LUCAS

TOWNSHIP CITY OF OREGON

SECTION 9

DWG BY NIESE PID _____

T 10 S R 8 E

TYPE MONUMENT MONBOX W/ 1" IPIN

~~ON SURFACE~~ - BELOW 2"

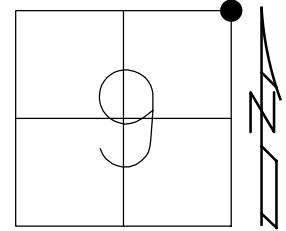
OFFSET Q PAVEMENT ON LT : RT

- TO - EDGE PAVEMENT

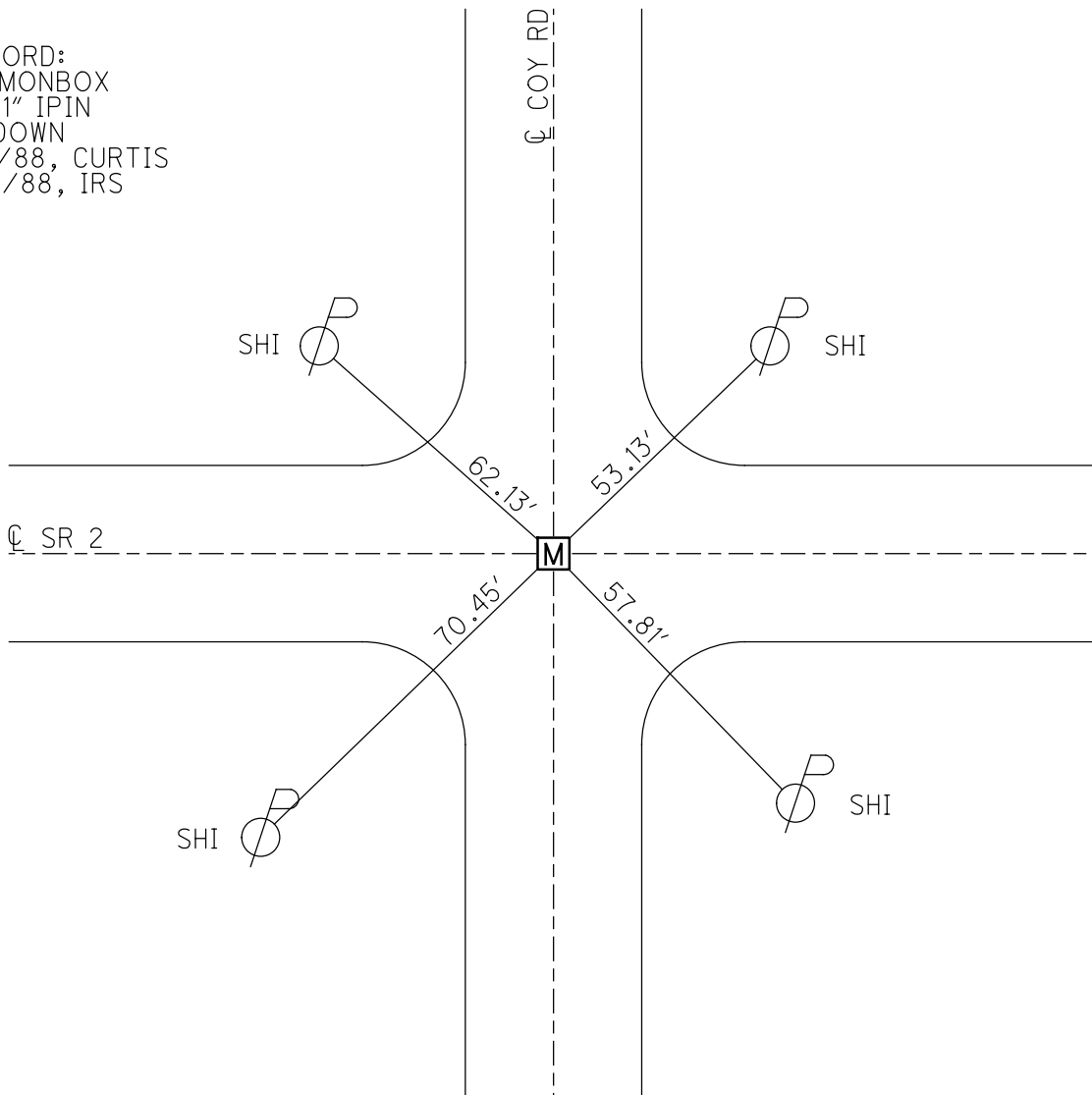
STATION: 1188+11

HORZ.DATUM: _____ GEOID: _____

GRID: NORTHING: _____ EASTING: _____



RECORD:
FD MONBOX
W/ 1" IPIN
2" DOWN
6/1/88, CURTIS
7/8/88, IRS



O.D.O.T. DISTRICT 2 SURVEY OFFICE

PERSONNEL

REFERENCE NO. 33

SHEET 5 OF 5

NOTES D. CURTIS

H.C. J. HOUSEHOLDER

R.C. _____

DATE 6-1-88

WEATHER WARM

TEMP. 90° ±

ROUTE S.R. #2

COUNTY LUCAS

TOWNSHIP _____

SECTION OTT. CO. LINE W.

T. _____ R. _____

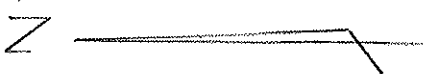
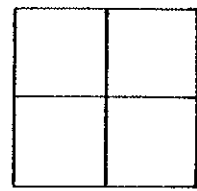
TYPE MONUMENT 1" I. PIN IN MON. BOX

ON SURFACE - BELOW 2" BELOW

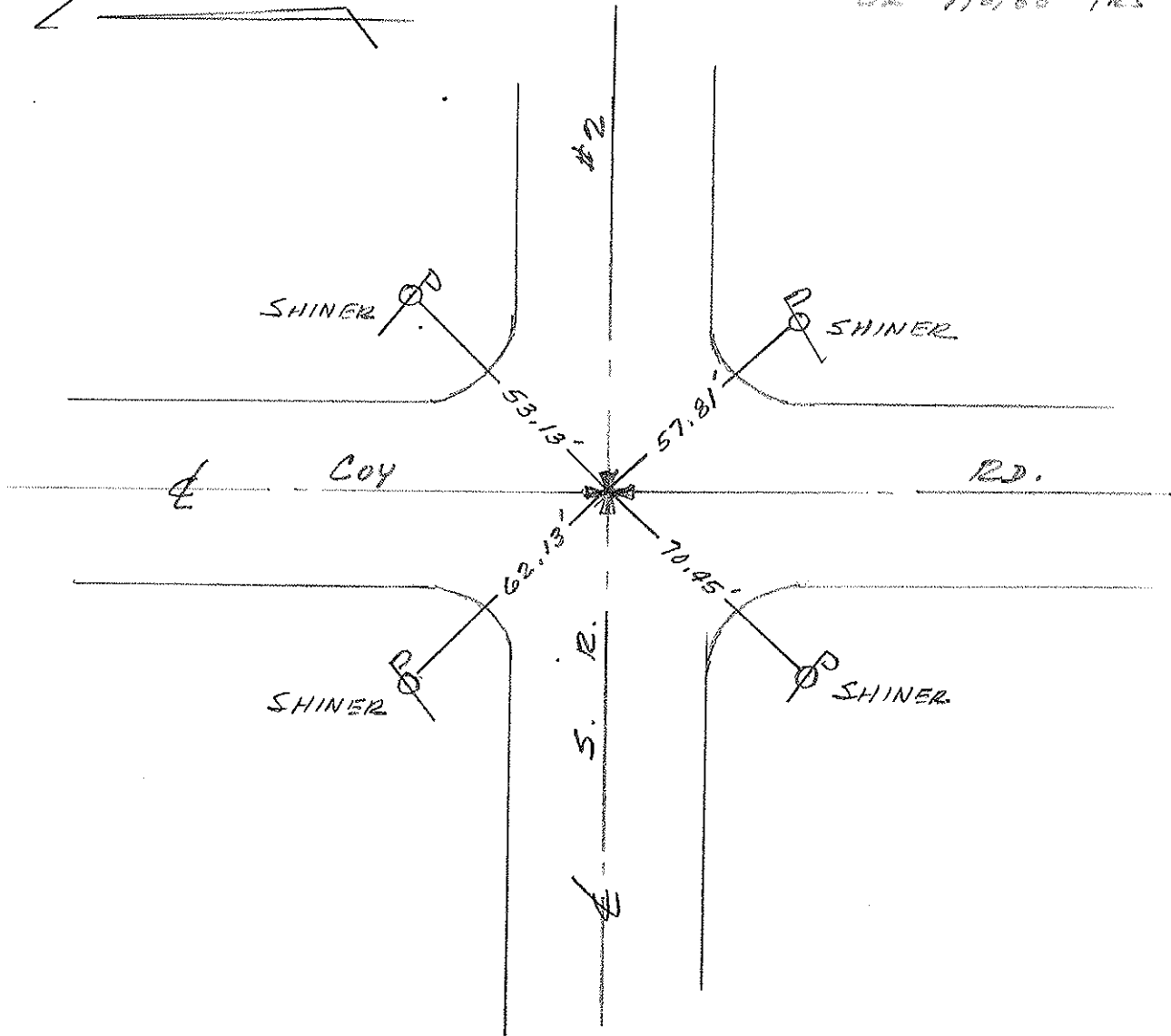
LEFT- & PAV'T. - RIGHT & PAV'T

TO _____ EDGE PAVEMENT

S.L.M. 1188 + 11



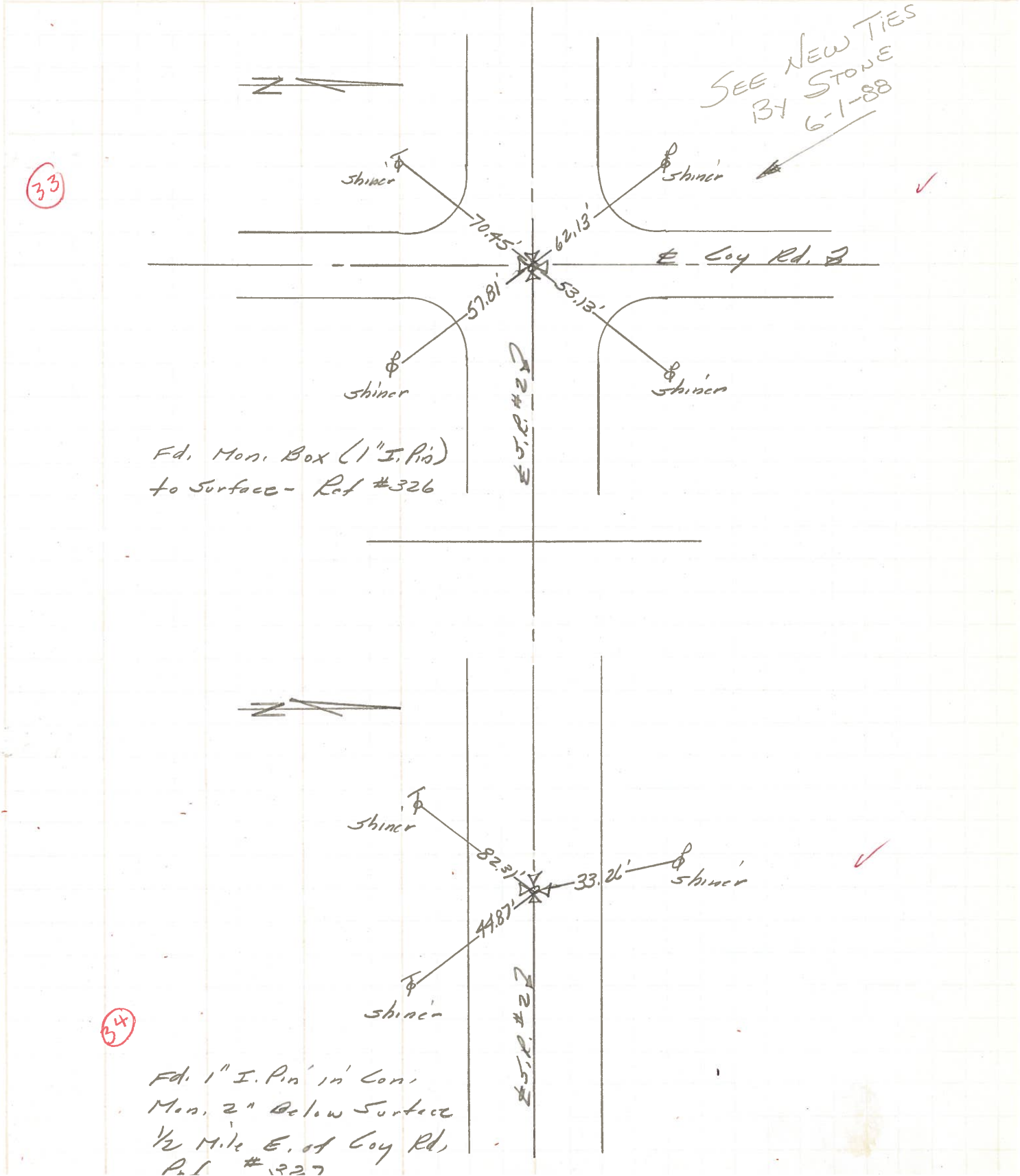
OK 7/8/88 IRS



PERSONNEL	TITLE	PERSONNEL	TITLE	COUNTY	DATE
Stone	Notes			Lucas	6 July 71
Michalsk	H.C.			#2	Weather Warm
Schroder	R.C.				
Farr	R			SEC. Off. Co. Line West	TEMP. 81°

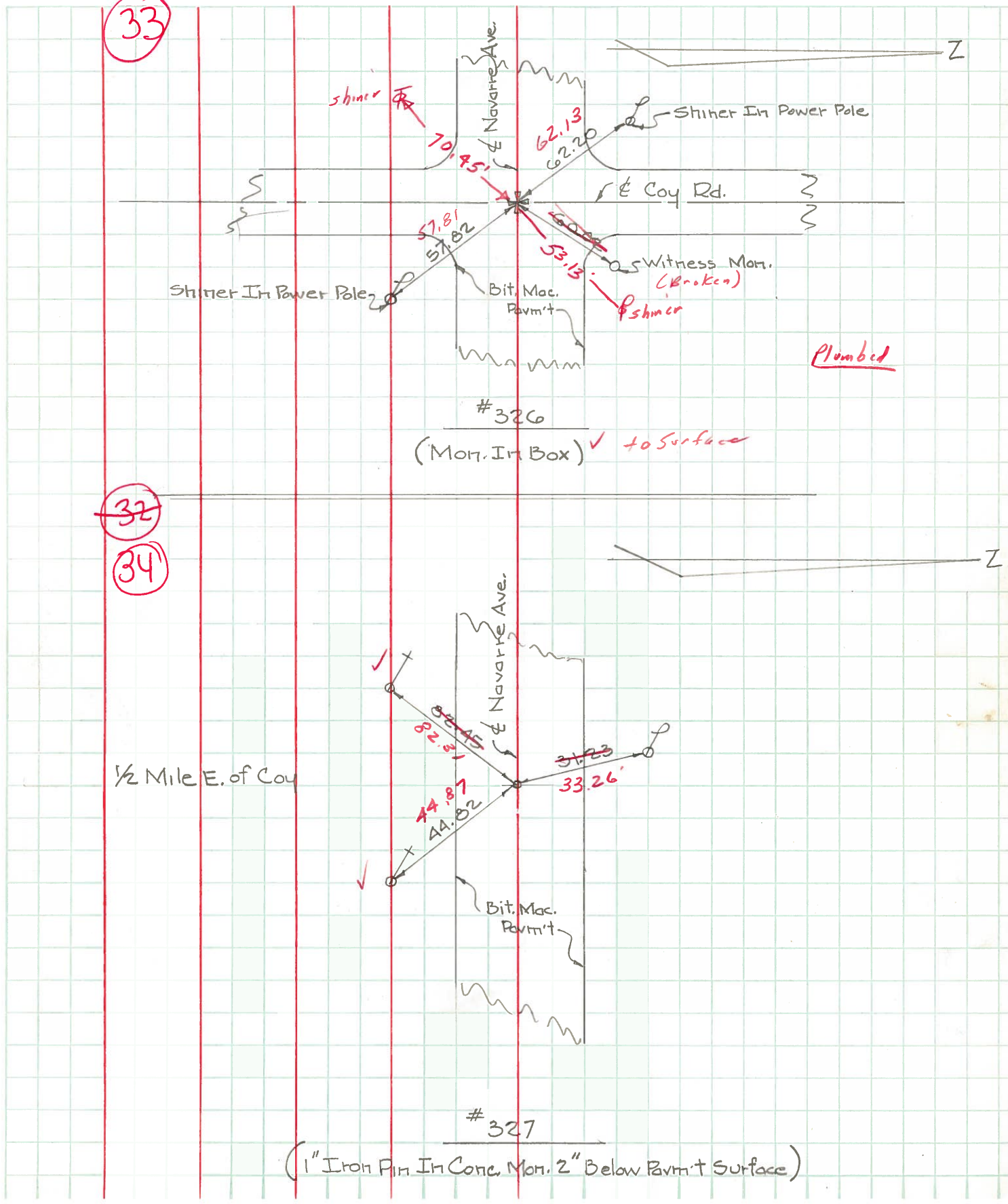
DESCRIPTION References to Control Points JOB NO. _____

LEFT CENTER LINE RIGHT



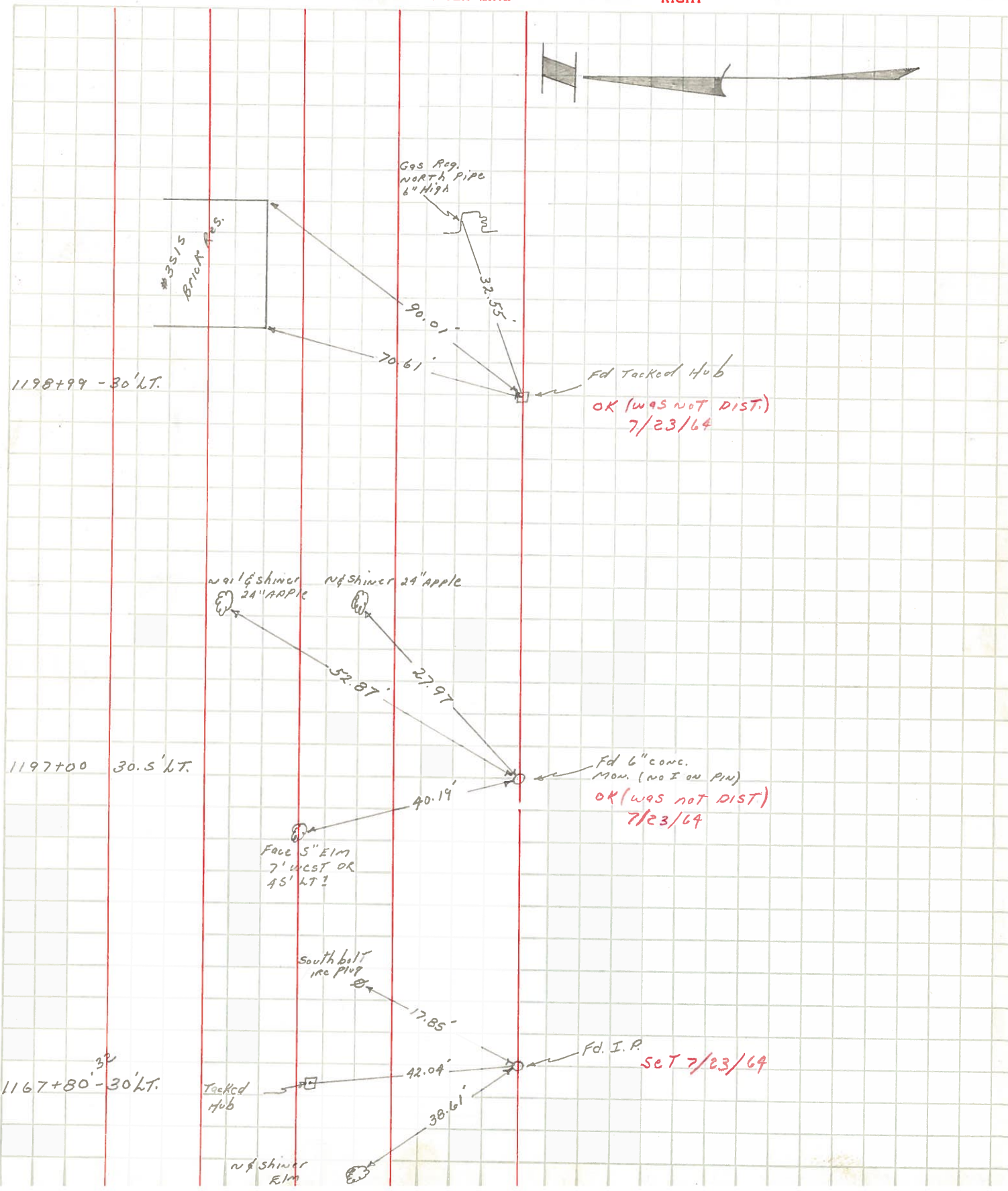
PERSONNEL	TITLE	PERSONNEL	TITLE	COUNTY	DATE	WEATHER	TEMP.
W. Denno				Lucas	Jan. 27, 1966	Snow	20°
D. Curtis				S. R. 2			
D. Granata				SEC.			
F. Omev							

DESCRIPTION Navarre Ave. - Ref. Mon. & Control Points JOB NO. _____



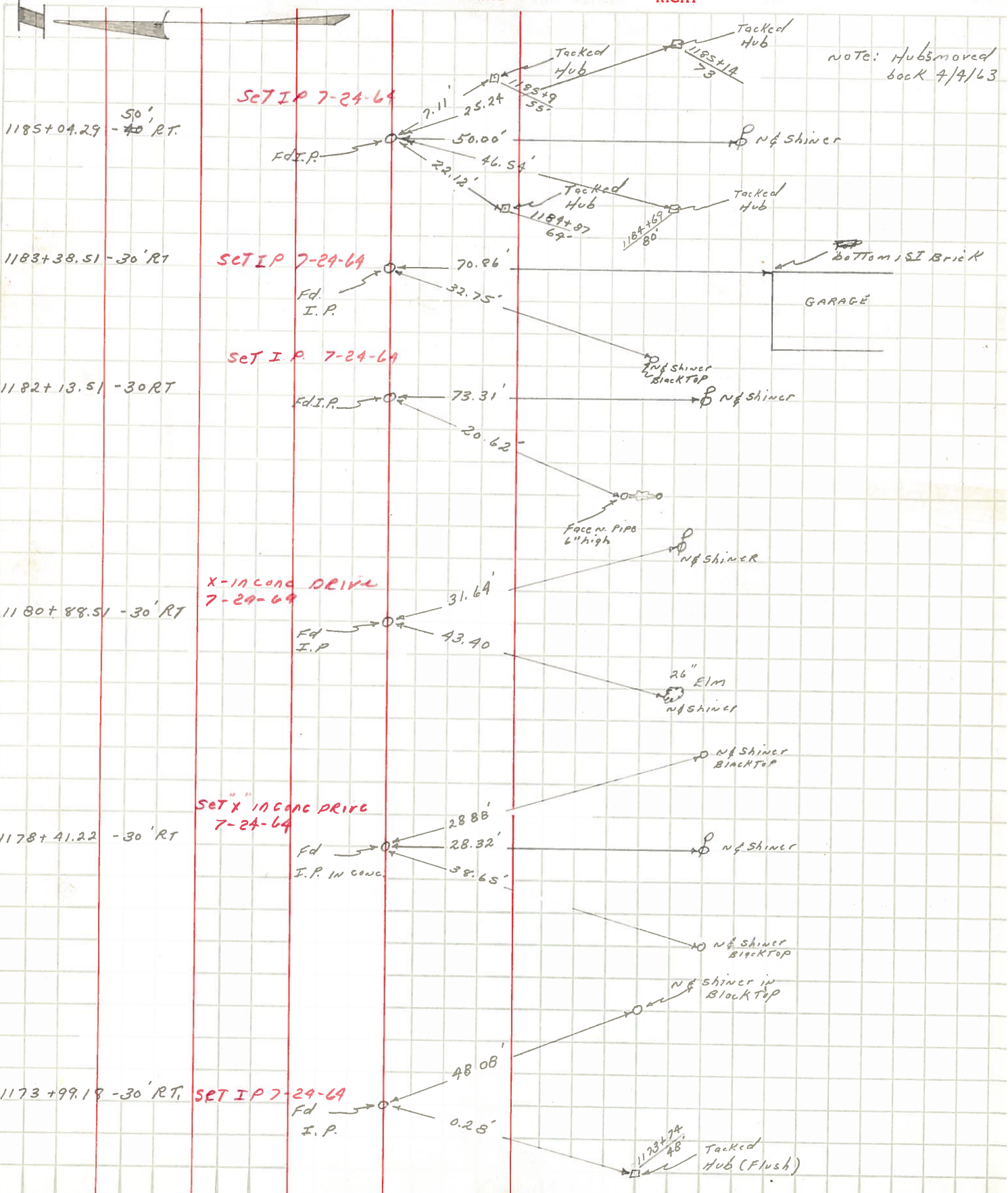
PERSONNEL	TITLE	PERSONNEL	TITLE	COUNTY	DATE	WEATHER	TEMP.
Blay	P.C.	Buhler		Lucas	4/2/63	clear	70°
Chappuis	Tape			S. R. #2			
Medford	Tape			SEC.			
Pelevas							

DESCRIPTION Ref to Property CORNER (NORTH SIDE) JOB NO. _____



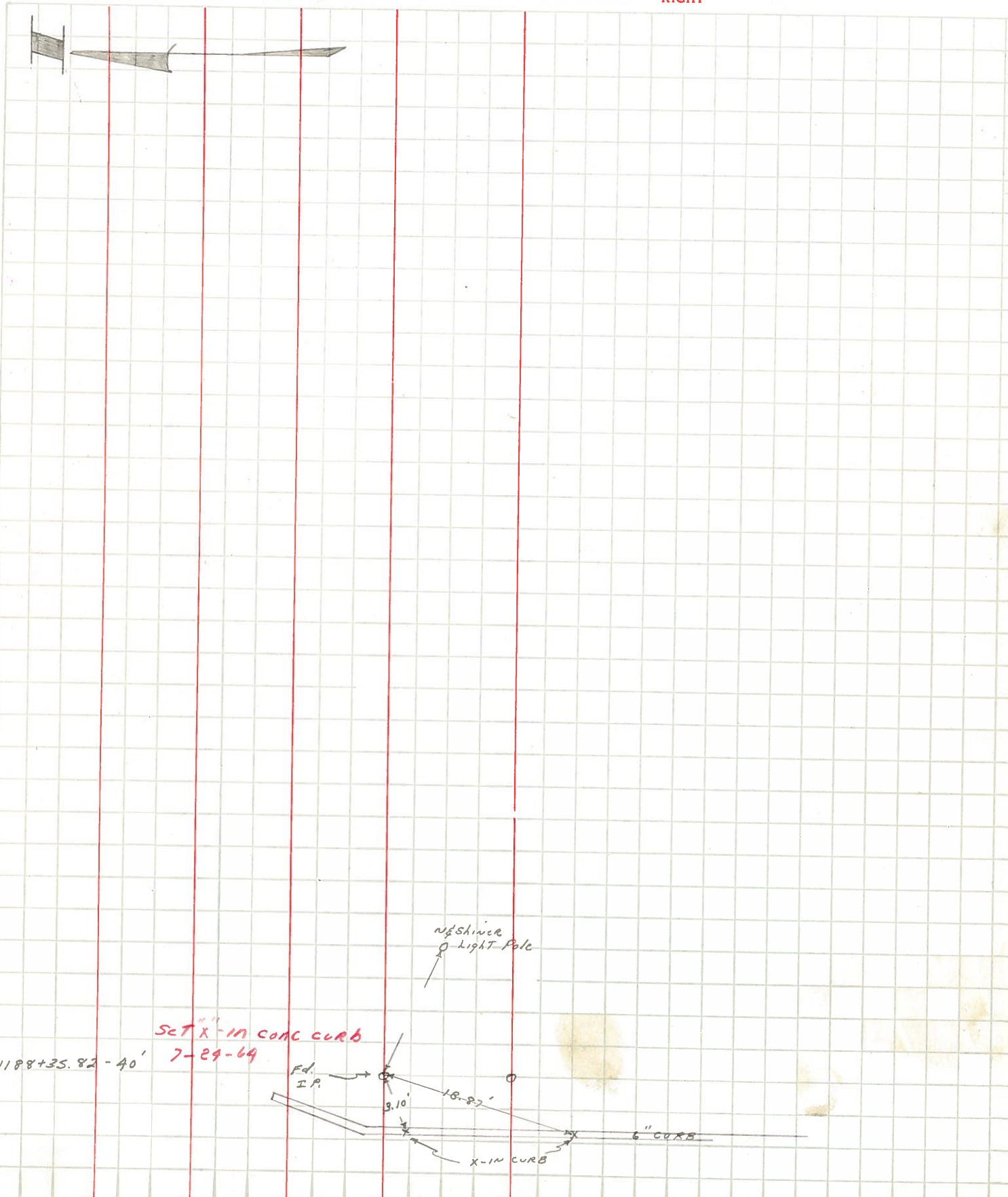
PERSONNEL	TITLE	PERSONNEL	TITLE	COUNTY	DATE	WEATHER	TEMP.
Blay	P.C.	Buhler		Lucas	4/3/63	Cloudy - Boring	65°
Chappuis	Tape	Pelevses		S. R. #2			
Medford	Tape						
DEWITZ							

DESCRIPTION Ref To Property CORNERS (south side) JOB NO. _____

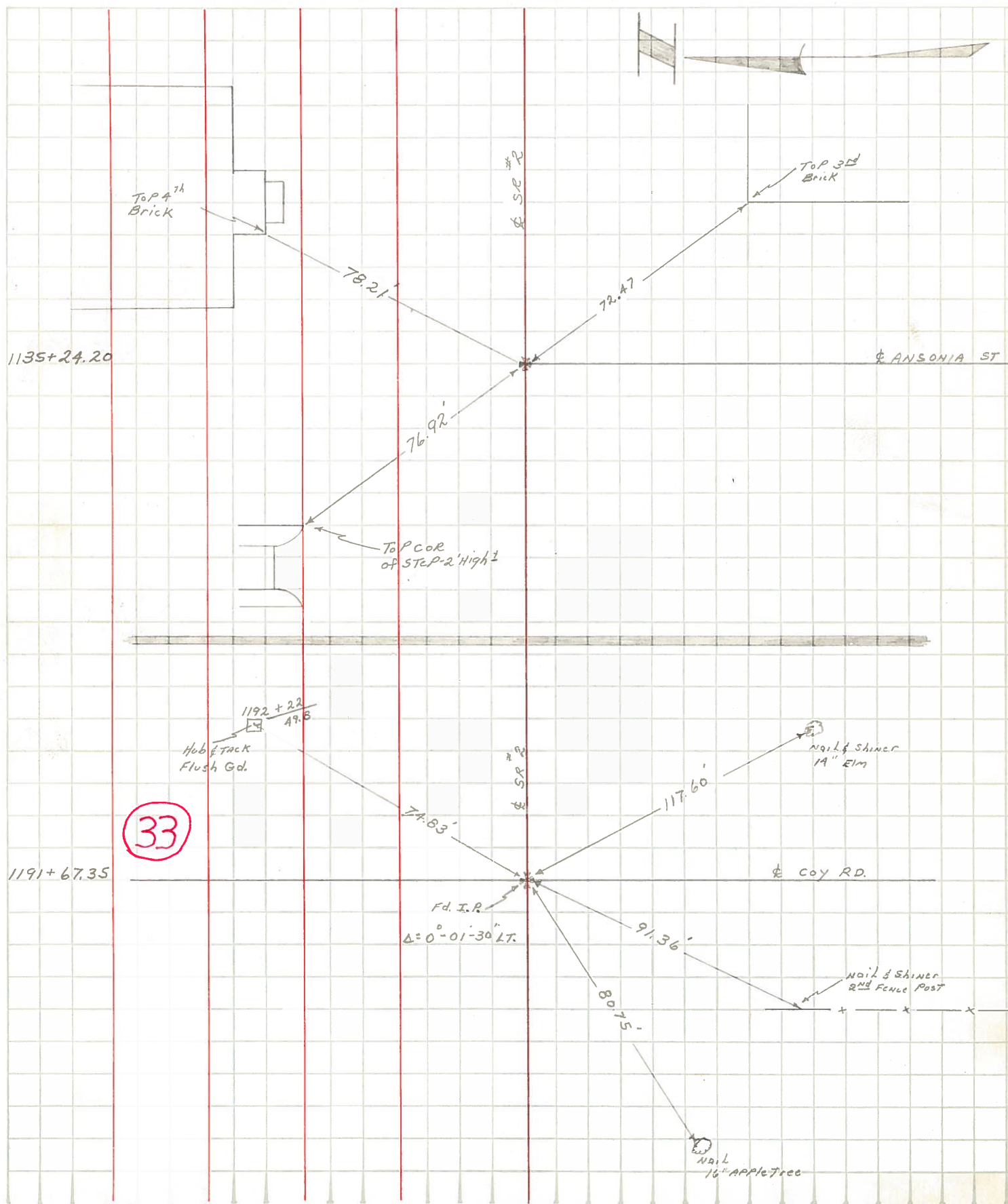


PERSONNEL	TITLE	PERSONNEL	TITLE	COUNTY	DATE	WEATHER	TEMP.
<u>Blay</u>	<u>P.C.</u>	<u>Buhler</u>		<u>Lucas</u>	<u>4/3/63</u>	<u>cloudy-rain</u>	<u>70°</u>
<u>Chappuis</u>	<u>Tape</u>	<u>Dewitz</u>		<u>S. R. #2</u>			
<u>Medford</u>	<u>Tape</u>						
<u>Peuses</u>							

DESCRIPTION Ref To Property Corners (South Side) SEC. _____ TEMP. 70°
 LEFT CENTER LINE RIGHT JOB NO. _____



PERSONNEL	TITLE	PERSONNEL	TITLE	COUNTY	DATE	WEATHER	TEMP.
BLAY	P.C.	Medford	Tape	Lucas	3/28/63	Clear	45°
Chappuis	TAPE			S. R. #2			
Peleses							
Buhler				SEC.			
DESCRIPTION				Ref- Mon & Control Points - ETC.		JOB NO.	



PERSONNEL	TITLE	PERSONNEL	TITLE	COUNTY Lucas	DATE 4-16-53
				S. R. #2	WEATHER
				SEC.	TEMP.

DESCRIPTION	LEFT	CENTER LINE	RIGHT	JOB NO.
Wheeling St. I. pin in conc.	(31) #324		N.E. to shiner in Guy pole 70.51' S.E. to shiner in T.P. 59.69' S.W. to shiner in P.P. 47.77' N.W. to shiner in P.P. #14206 48.51' Brick cor. post to brick bldg. 49.43'	
1/2 mi. E. of Wheeling St. I. pin.	(32) #325		N.E. to shiner in P.P. 77.42 S.E. to N.W. cor. brick pin of ho. 69.27 S. to x-in steel A.P. 28.53 S.W. to shiner in T.P. 30.07	
Coy Ed. man.	(33) #326		N.E. to shiner in P.P. 39.52' S.E. to shiner in P.P. 58.85' S.W. to shiner in T.P. & cable 58.52' N.W. to shiner in P.P. 36.44'	
1/2 mi. East of Coy Ed. (man.)	(34) #327		S.E. to shiner in T.P. 44.71' S.W. to shiner in T.P. 80.67' N.W. to shiner in P.P. 81.23'	
Ka Henderson Ed. (man.)	(35) #328		N.E. to shiner in P.P. 42.93' S.E. to shiner in cable pole 78.65' S.W. to shiner in T.P. & cable 38.91' N.W. to shiner in T.P. 64.25'	