

O.D.O.T. DISTRICT 2 SURVEY OFFICE (USE ONLY)

PERSONNEL

REFERENCE NO. 34

SHEET 8 OF 18

NOTES STONE

DATE 6/19/85

ROUTE SR 2

H.C. CURTIS

WEATHER SUNNY

COUNTY LUCAS

R.C. MICHALAK
HOUSEHOLDER

TEMP. 60°

TOWNSHIP CITY OF OREGON

DWG BY NIESE PID _____

SECTION 10

T 10 S R 8 E

TYPE MONUMENT SM.SPIKE

ON SURFACE - ~~BELOW~~ ON

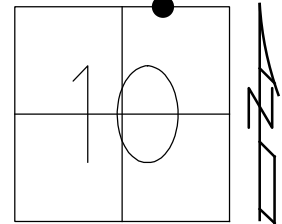
OFFSET ☉ PAVEMENT ON LT : RT

- TO - EDGE PAVEMENT

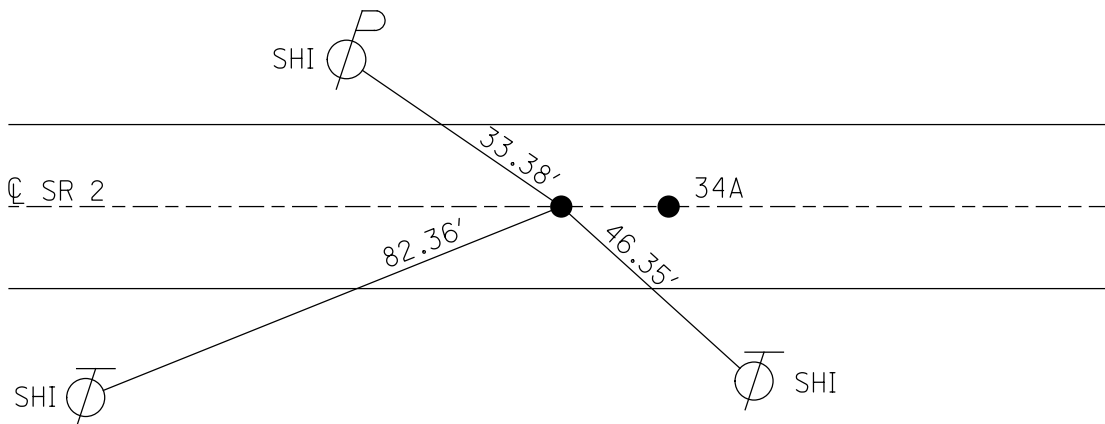
STATION: 1219+00

HORZ.DATUM: _____ GEOID: _____

GRID: NORTHING: _____ EASTING: _____



RECORD:
FD SM.SPIKE
6/19/85, IRS
SET P.K. NAIL
11/1/85



O.D.O.T. DISTRICT 2 SURVEY OFFICE

PERSONNEL _____

REFERENCE NO. 34

SHEET 2 OF _____

NOTES L. Stone

H.C. D. Curtis

R.C. R. Michaelak

J. Haushalter

DATE 19 June 85

WEATHER Sunny

TEMP. 60°

ROUTE SR #2

COUNTY Lucas

TOWNSHIP _____

SECTION Oregon

T _____ R _____

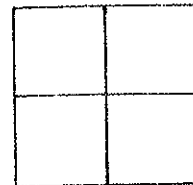
TYPE MONUMENT Ⓐ = Small Spk.
Ⓑ = PK Nail

ON SURFACE - BELOW Surface

LEFT- & PAV'T. - RIGHT _____

TO _____ EDGE PAVEMENT

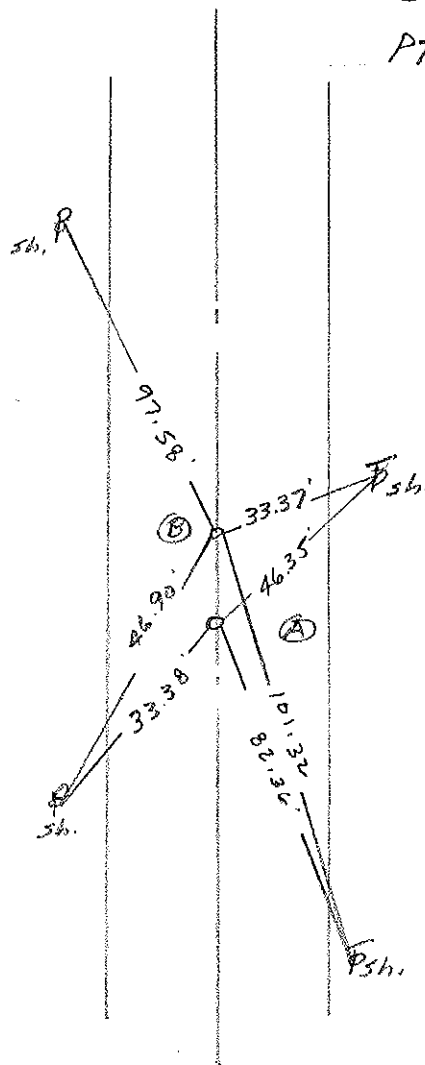
S.L.M. 1219+00



1/2 mile East of Coy Rd.

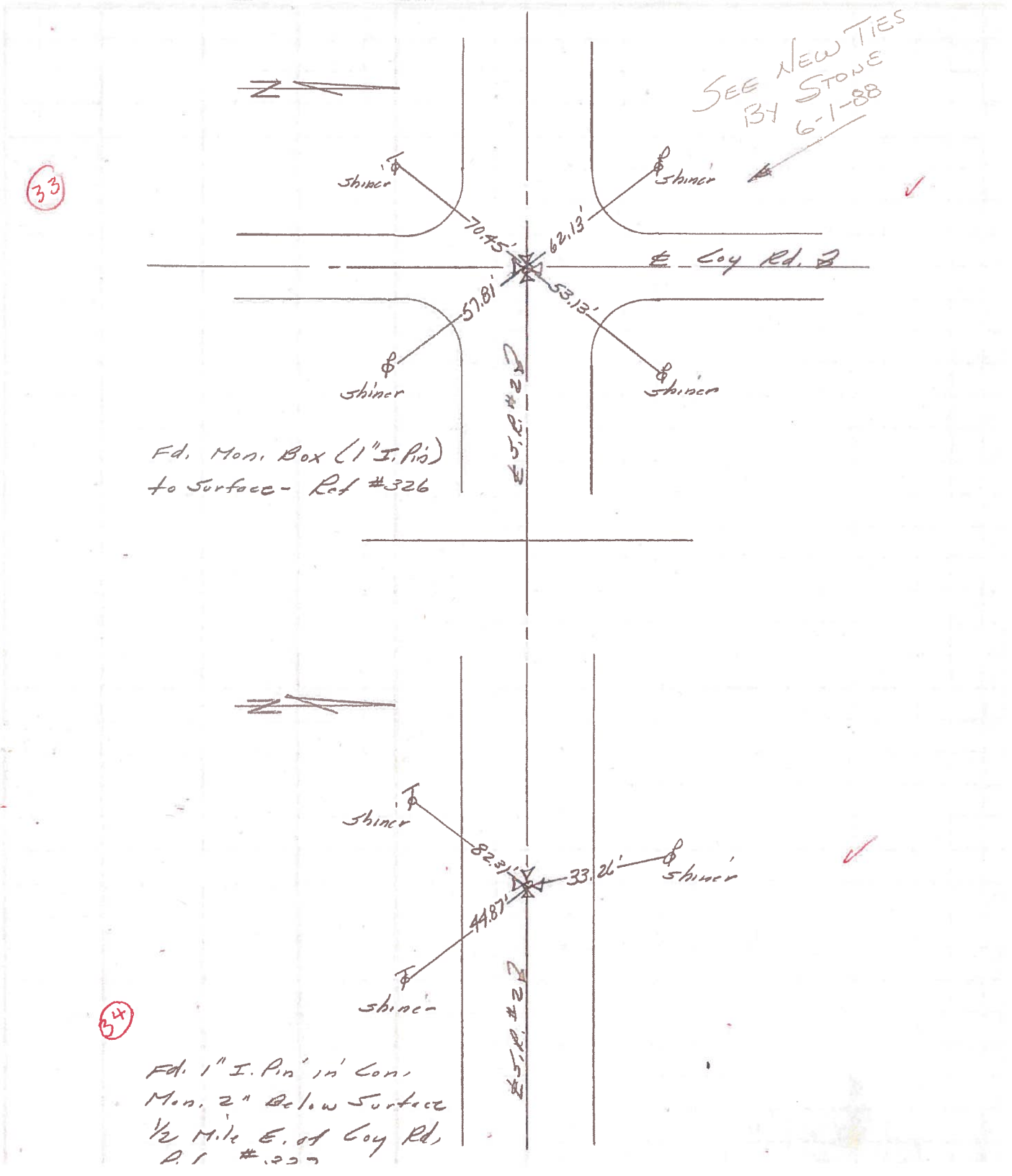
Set P.K. Nails At Both

Pts - 11-1-85



| PERSONNEL | TITLE | PERSONNEL | TITLE | COUNTY | DATE |
|-----------|-------|-----------|-------|------------------------|-----------|
| Stone | Notes | | | Lucas | 6 July 71 |
| Michalak | H.C. | | | #2 | Weather |
| Schroeder | R.C. | | | | TEMP |
| Farr | RD | | | SEC. Off. Co Line West | 81° |

DESCRIPTION: References to Control Points JOB NO. _____

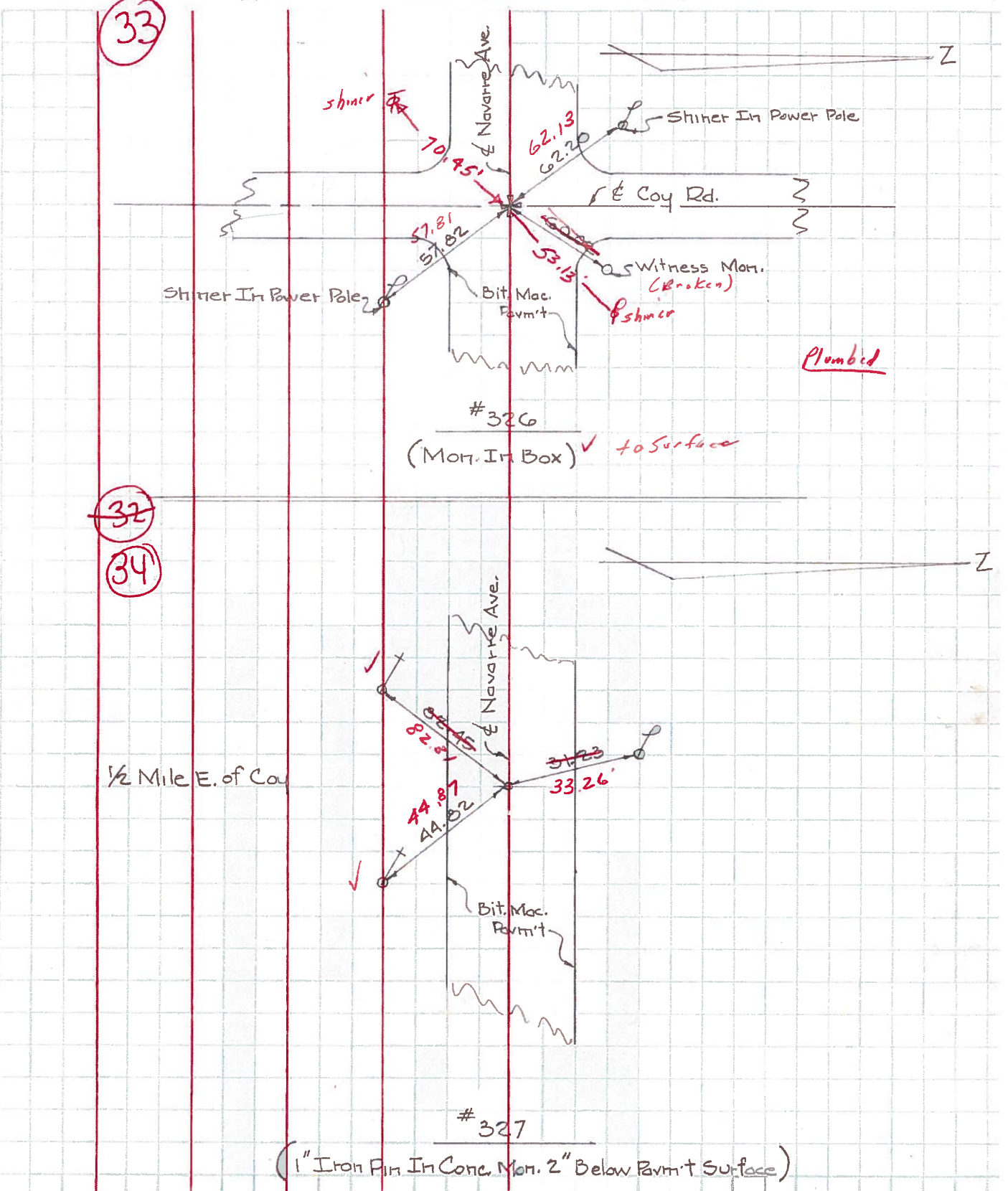


33

34

| PERSONNEL | TITLE | PERSONNEL | TITLE | COUNTY | DATE | WEATHER | TEMP. |
|------------|-------|-----------|-------|--------|---------------|---------|-------|
| W. Denno | | | | Lucas | Jan. 27, 1966 | Snow | 20° |
| D. Curtis | | | | 2 | | | |
| D. Granata | | | | | | | |
| F. Orney | | | | | | | |

DESCRIPTION Navarre Ave. - Ref. Mon. & Control Points JOB NO. _____



| | | | | | |
|-----------|-------|-----------|-------|--------------|--------------|
| PERSONNEL | TITLE | PERSONNEL | TITLE | COUNTY Lucas | DATE 4-16-53 |
| | | | | S. R. #2 | WEATHER |
| | | | | SEC. | TEMP. |

| DESCRIPTION | LEFT | CENTER LINE | RIGHT | JOB NO. |
|---------------------------------------|--------------|-------------|--|---------|
| Whesling St. I. pin in conc. | (31) #324 | | N.E. to shiner in Guy pole 70.51' S.E. to shiner in T.P. 59.69' S.W. to shiner in P.P. 47.77' N.W. to shiner in P.P. #14206 48.51' Brick cor. post to brick bldg. 49.43' | |
| 1/2 mi. E. of Whesling St. I. pin. | (32) #325 | | N.E. to shiner in P.P. 77.42 S.E. to N.W. cor. brick fan of ho. 69.27 S. to x-in steel A.P. 28.53 S.W. to shiner in T.P. 30.07 | |
| Coy Ed. man. | (33) #326 | | N.E. to shiner in P.P. 39.52' S.E. to shiner in P.P. 58.85' S.W. to shiner in T.P. & cable 58.52' N.W. to shiner in P.P. 36.44' | |
| 1/2 mi. East of Coy Ed. (man.) | (34) #327 | | S.E. to shiner in T.P. 44.71' S.W. to shiner in T.P. 80.67' N.W. to shiner in P.P. 81.23' | |
| La Mendorf Ed (man.) | (35) #328 | | N.E. to shiner in P.P. 42.93' S.E. to shiner in cable pole 78.65' S.W. to shiner in T.P. & cable 38.91' N.W. to shiner in T.P. 64.25' | |