

O.D.O.T. DISTRICT 2 SURVEY OFFICE (USE ONLY)

PERSONNEL

REFERENCE NO. 34 A

SHEET 9 OF 18

NOTES STONE DATE 6/19/85
H.C. CURTIS WEATHER SUNNY
R.C. MICHALAK TEMP. 60°
HOUSEHOLDER

ROUTE SR 2
COUNTY LUCAS
TOWNSHIP CITY OF OREGON
SECTION 10

DWG BY NIESE PID _____

T 10 S R 8 E

TYPE MONUMENT P.K. NAIL

ON SURFACE - ~~BELOW~~ ON _____

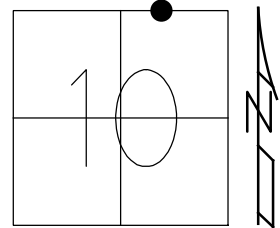
OFFSET C PAVEMENT ON _____ LT : RT

____ TO ____ EDGE PAVEMENT

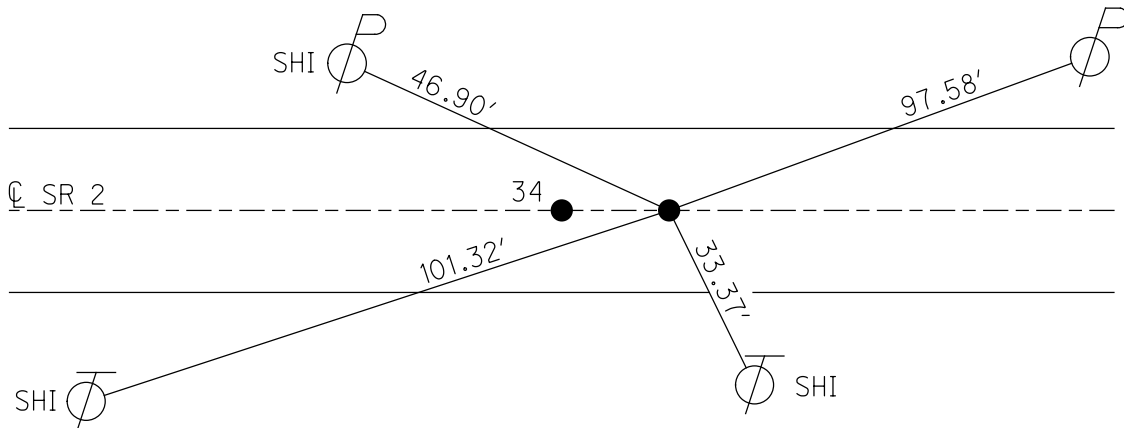
STATION: 1219+00

HORIZ.DATUM: _____ GEOID: _____

GRID: NORTHING: _____ EASTING: _____



RECORD:
FD P.K. NAIL
6/19/85, IRS
SET P.K. NAIL
11/1/85



O.D.O.T. DISTRICT 2 SURVEY OFFICE

PERSONNEL _____

REFERENCE NO. 34

SHEET 2 OF _____

NOTES L. Stone

H.C. D. Curtis

R.C. R. Michaelak

J. Haushalter

DATE 19 June 85

WEATHER Sunny

TEMP. 60°

ROUTE SR #2

COUNTY Lucas

TOWNSHIP _____

SECTION Oregon

T _____ R _____

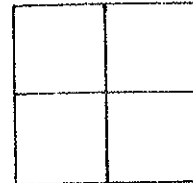
TYPE MONUMENT Ⓐ = Small Spk.
Ⓑ = PK Nail

ON SURFACE - BELOW Surface

LEFT- & PAV'T. - RIGHT _____

TO _____ EDGE PAVEMENT

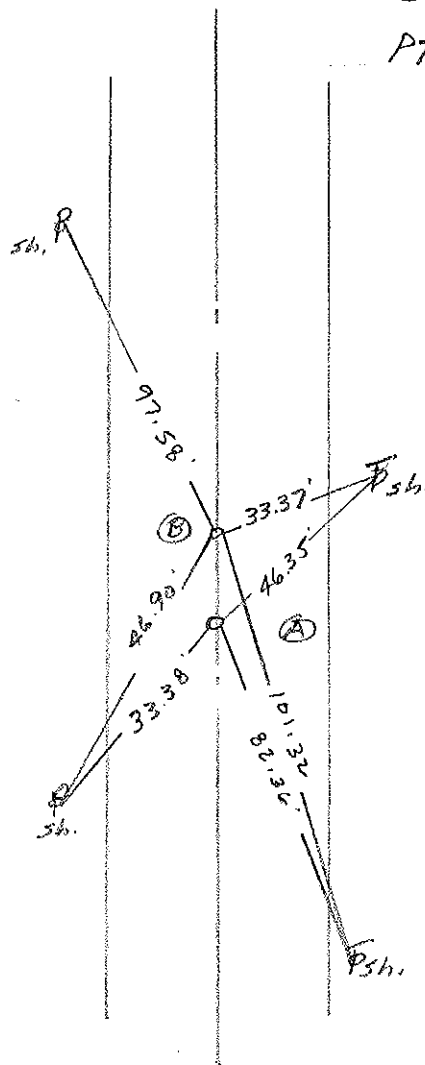
S.L.M. 1219+00



1/2 mile East of Coy Rd.

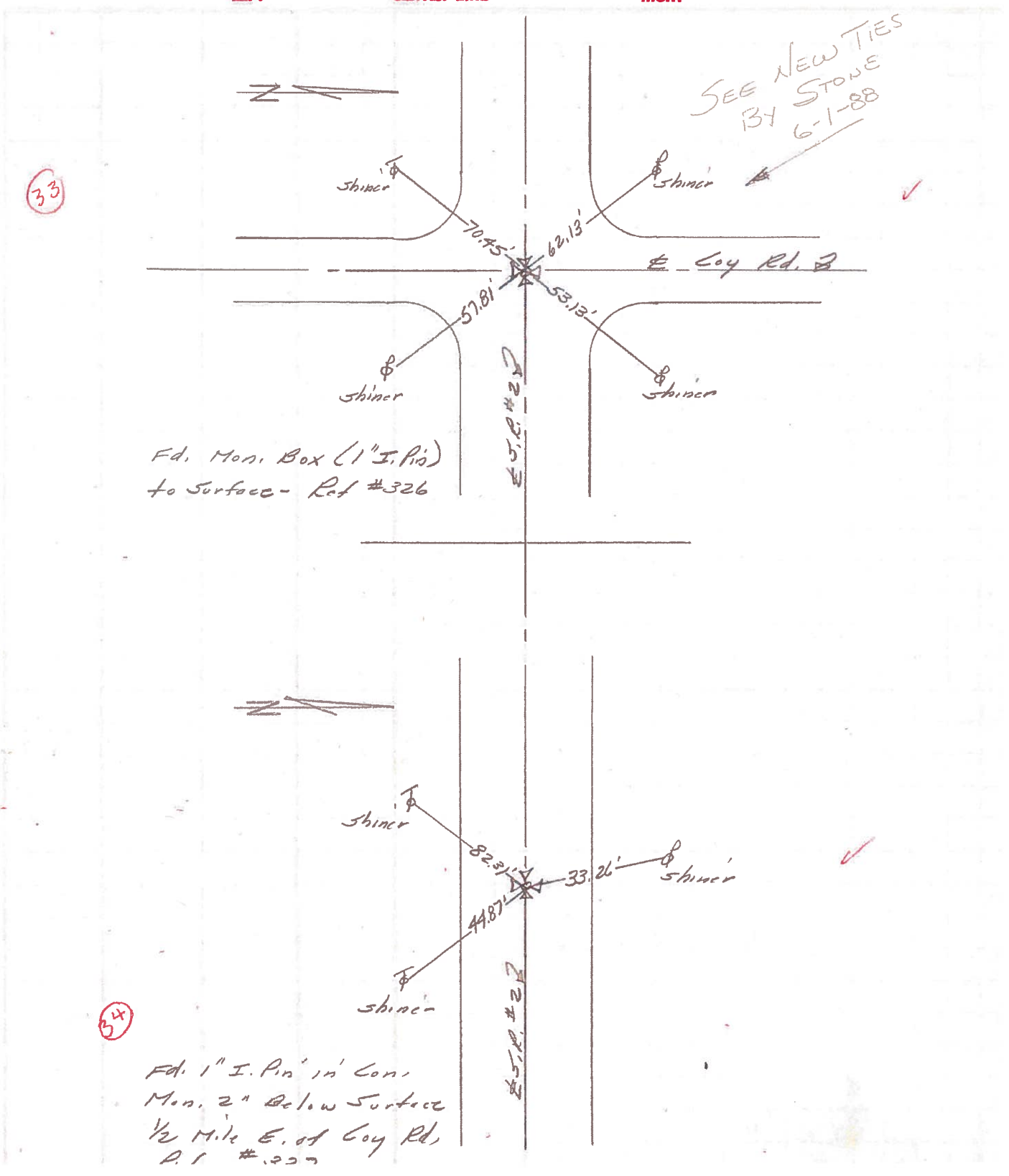
Set P.K. Nails At Both

Pts - 11-1-85



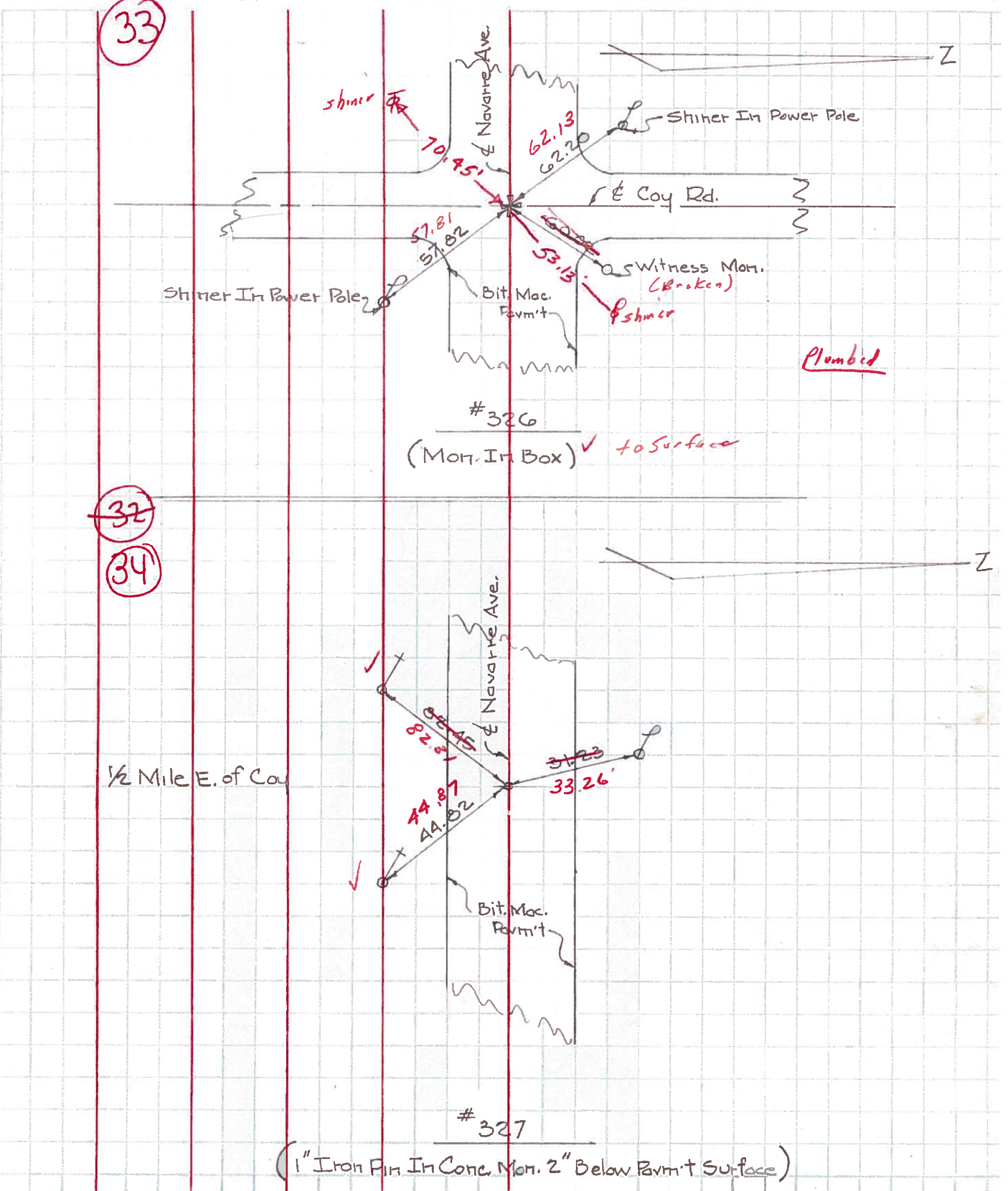
PERSONNEL	TITLE	PERSONNEL	TITLE	COUNTY	DATE	WEATHER	TEMP.
Stone	Notes			Lucas	6 July 71	Windy	81°
Michalak	H.C.			#2			
Schroeder	R.C.						
Farr	RD						

DESCRIPTION: References to Control Points JOB NO. _____



PERSONNEL	TITLE	PERSONNEL	TITLE	COUNTY	DATE	WEATHER	TEMP.
W. Denno				Lucas	Jan. 27, 1966	Snow	20°
D. Curtis				2			
D. Granata							
F. Ormy							

DESCRIPTION Navarre Ave. - Ref. Mon. & Control Points JOB NO. _____



PERSONNEL	TITLE	PERSONNEL	TITLE	COUNTY Lucas	DATE 4-16-53
				S. R. #2	WEATHER
				SEC.	TEMP.

DESCRIPTION	LEFT	CENTER LINE	RIGHT	JOB NO.
Whesling St. I. pin in conc.	(31) #324		N.E. to shiner in Guy pole 70.51' S.E. to shiner in T.P. 59.69' S.W. to shiner in P.P. 47.77' N.W. to shiner in P.P. #14206 48.51' Brick cor. post to brick bldg. 49.43'	
1/2 mi. E. of Whesling St. I. pin.	(32) #325		N.E. to shiner in P.P. 77.42 S.E. to N.W. cor. brick fan of ho. 69.27 S. to x-in steel A.P. 28.53 S.W. to shiner in T.P. 30.07	
Coy Ed. man.	(33) #326		N.E. to shiner in P.P. 39.52' S.E. to shiner in P.P. 58.85' S.W. to shiner in T.P. & cable 58.52' N.W. to shiner in P.P. 36.44'	
1/2 mi. East of Coy Ed. (man.)	(34) #327		S.E. to shiner in T.P. 44.71' S.W. to shiner in T.P. 80.67' N.W. to shiner in P.P. 81.23'	
La Mendorf Ed (man.)	(35) #328		N.E. to shiner in P.P. 42.93' S.E. to shiner in cable pole 78.65' S.W. to shiner in T.P. & cable 38.91' N.W. to shiner in T.P. 64.25'	