

O.D.O.T. DISTRICT 2 SURVEY OFFICE (USE ONLY)

PERSONNEL

REFERENCE NO. 35

SHEET 10 OF 18

NOTES STONE

DATE 6/19/85

ROUTE SR 2

H.C. CURTIS

WEATHER SUNNY

COUNTY LUCAS

R.C. MICHALAK
HOUSEHOLDER

TEMP. 60°

TOWNSHIP CITY OF OREGON

DWG BY NIESE PID _____

SECTION 10

T 10 S R 8 E

TYPE MONUMENT IPIN IN CONC

~~ON SURFACE~~ - BELOW 4"

OFFSET \varnothing PAVEMENT ON LT : RT

- TO - EDGE PAVEMENT

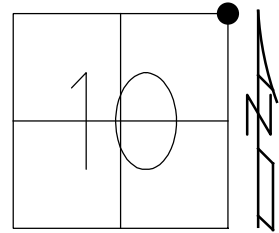
STATION: 1241+85

HORZ. DATUM: _____

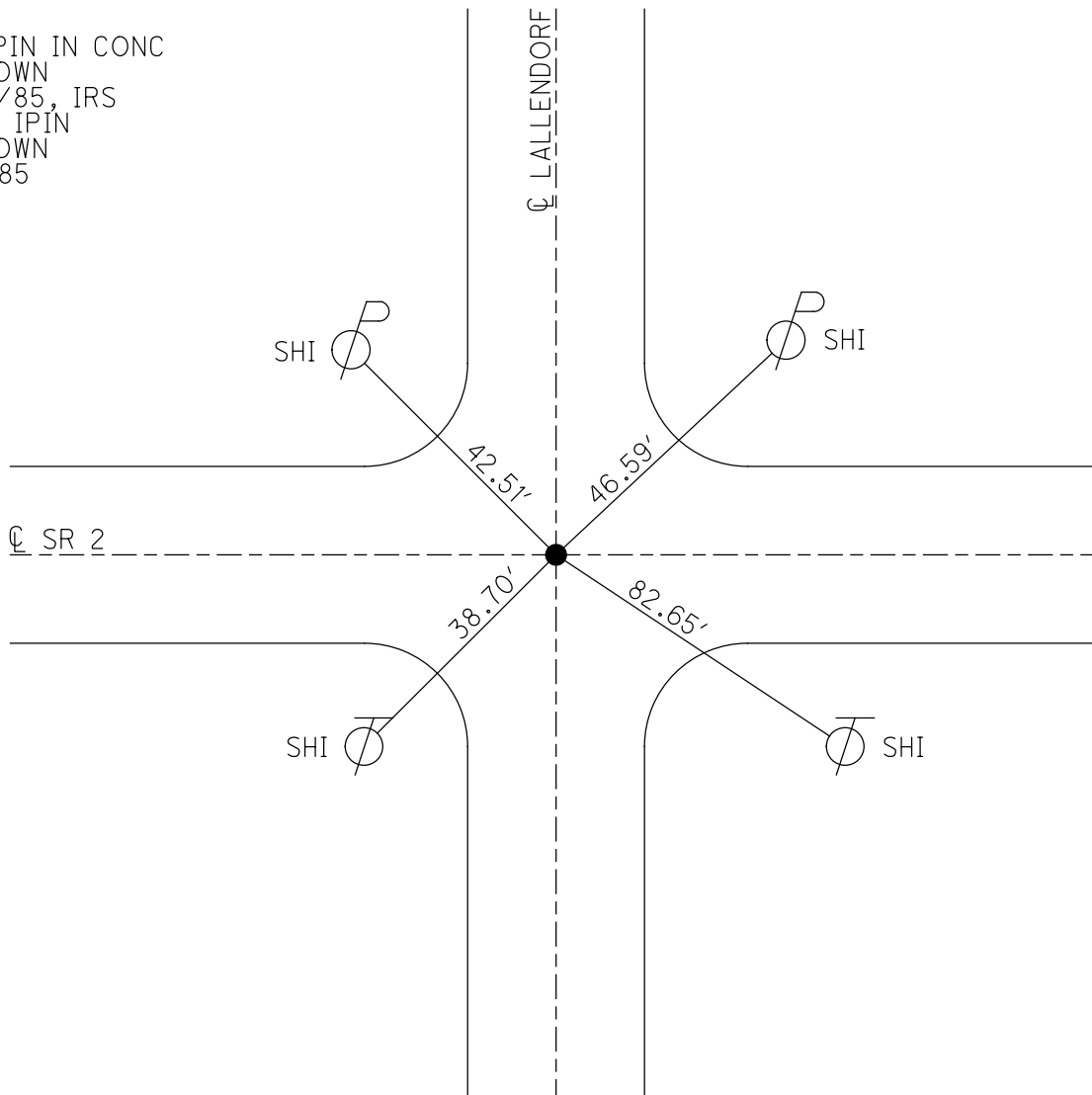
GEOID: _____

GRID: NORTHING: _____

EASTING: _____



FD IPIN IN CONC
4" DOWN
6/19/85, IRS
FD 1" IPIN
4" DOWN
11/1/85



O.D.O.T. DISTRICT 2 SURVEY OFFICE

PERSONNEL

REFERENCE NO. 35

SHEET 3 OF

NOTES L. Stone

H.C. D. Curtis

R.C. R. Michalak

J. Hausholden

DATE 19 June 85

WEATHER Sunny

TEMP. 60°

ROUTE SR # 2

COUNTY Lucas

TOWNSHIP

SECTION Oregon

T R

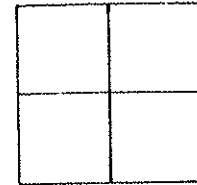
TYPE MONUMENT 1. Pin in Con.

ON SURFACE - BELOW 4" deep

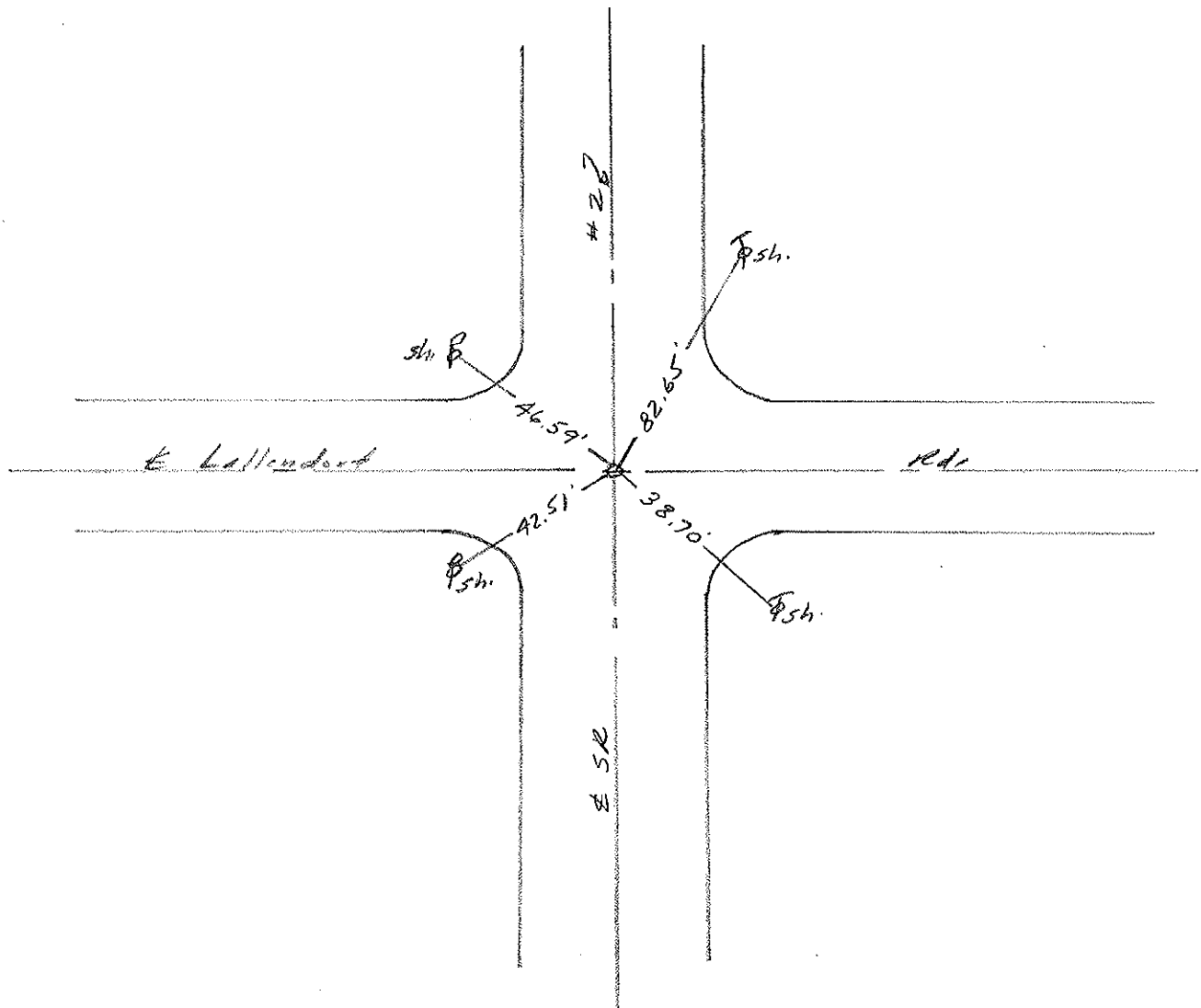
LEFT - & PAV'T. - RIGHT

TO EDGE PAVEMENT

S.L.M. 1241+85 / 23.52



Fd. 1" I. Pin 4" deep - 1-11-85



PERSONNEL	TITLE	PERSONNEL	TITLE
Stone	Notes		
Michalalek	H.C.		
Schroder	R.C.		
Farr	RJ		

COUNTY Lucas DATE 6 July 71

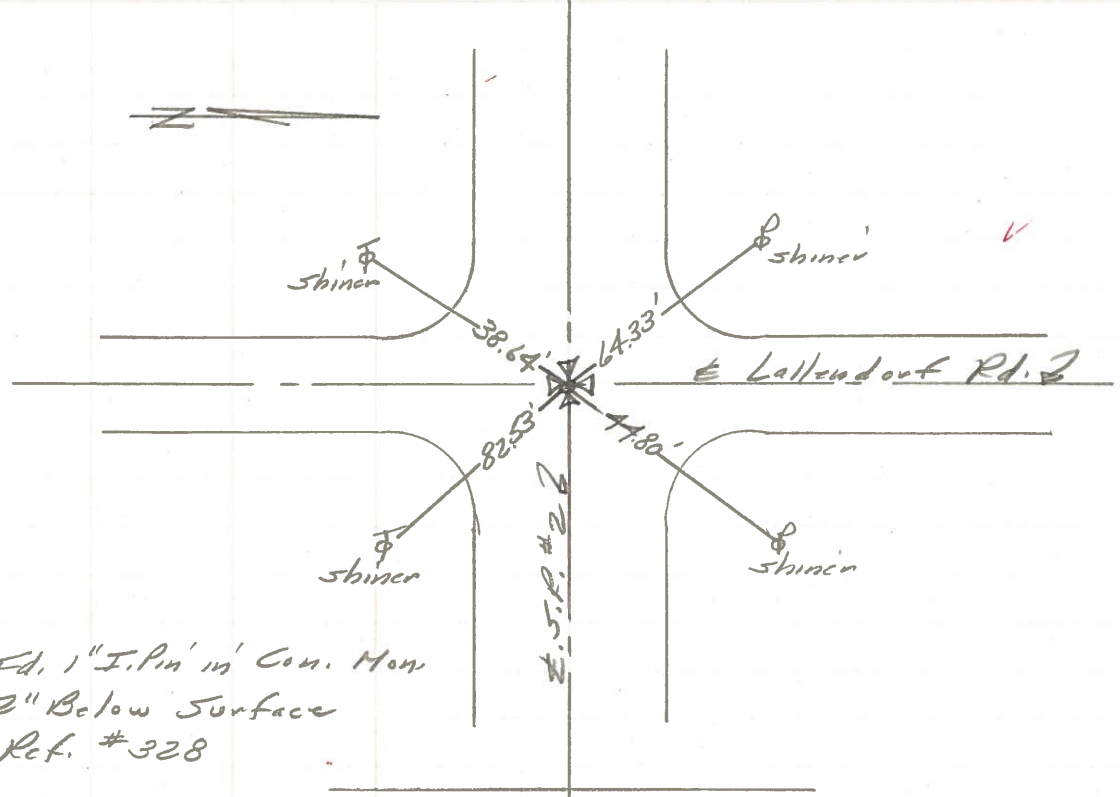
S. R. #2 WEATHER Windy

SEC. OH. Co. Line West TEMP. 81°

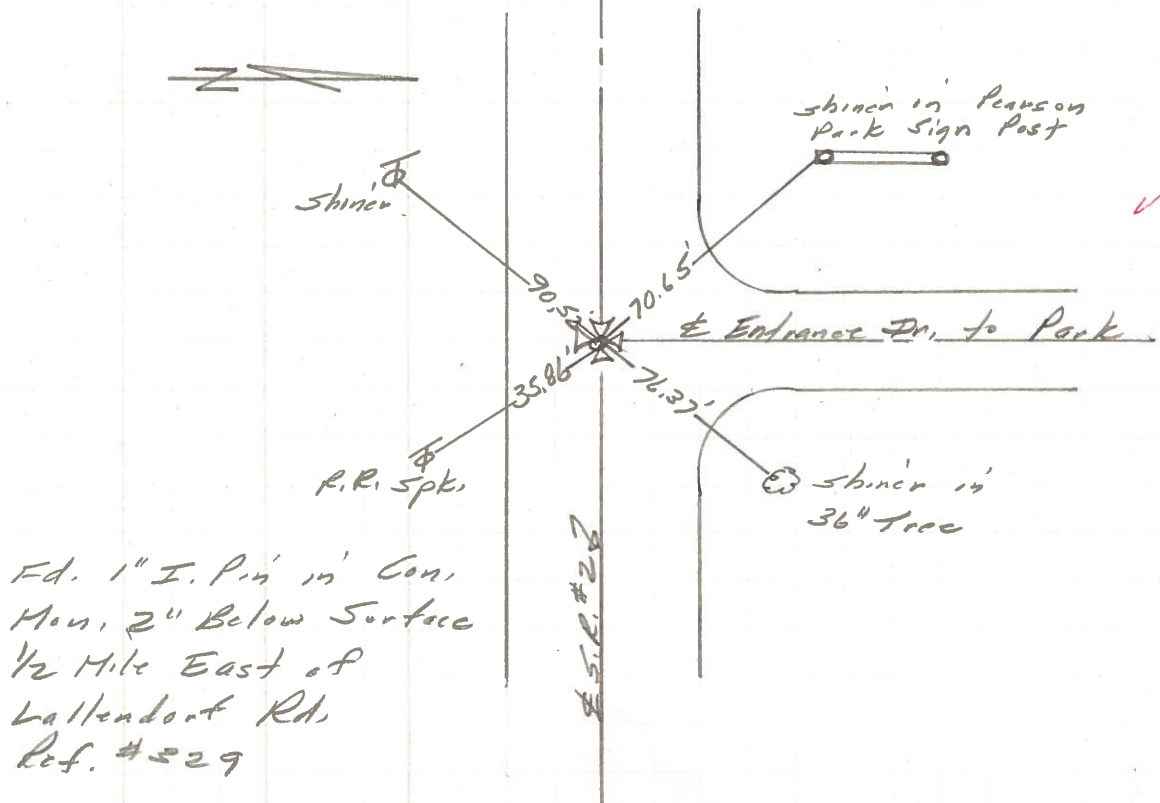
DESCRIPTION References to Control Points JOB NO. _____

LEFT CENTER LINE RIGHT

35

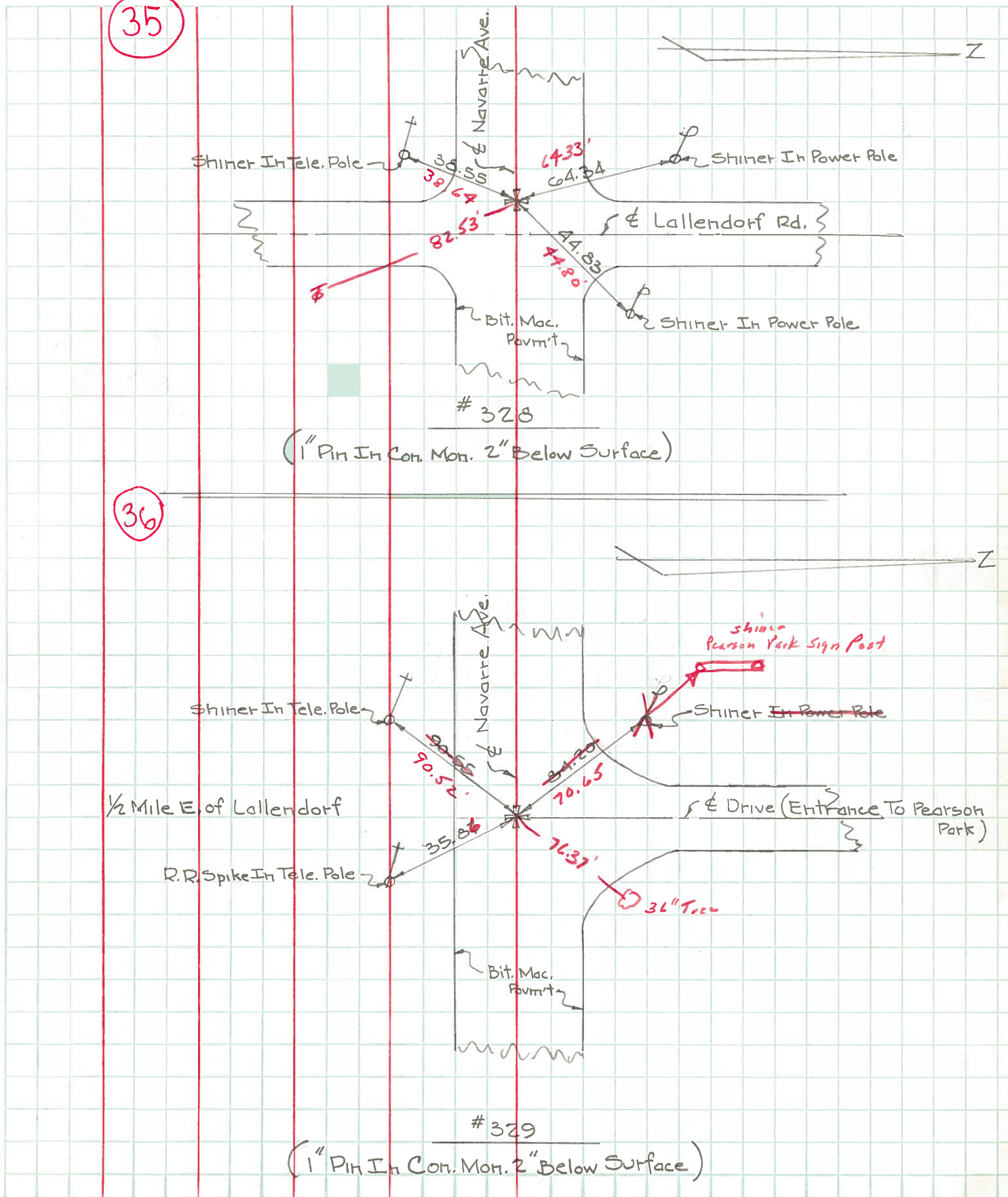


36



PERSONNEL	TITLE	PERSONNEL	TITLE	COUNTY	DATE	WEATHER	TEMP.
W. Denno				Lucas	Jan. 27, 1966	Snow	20°
D. Curtis				S. R.	2		
D. Granata				SEC.			
E. Oney							

DESCRIPTION Navarre Ave. - Ref. Mon. & Control Points JOB NO. _____



PERSONNEL	TITLE	PERSONNEL	TITLE
COUNTY Lucas			
DATE 4-16-53			
S. R. #2			
WEATHER			
SEC.			
TEMP.			

DESCRIPTION	LEFT	CENTER LINE	RIGHT	JOB NO.
Wheeling St. I. pin in conc.	(31) #324		N.E. to shiner in Guy pole 70.51' S.E. to shiner in T.P. 59.69' S.W. to shiner in P.P. 47.72' N.W. to shiner in P.P. 714206 48.51' Brick cor. post to brick bldg. 49.43'	
1/4 mi. E. of Wheeling St. I. pin.	(32) #325		N.E. to shiner in P.P. 77.42 S.E. to N.W. cor. brick Pn. of Ho. 69.27 S. to x-in steel A.P. 28.53 S.W. to shiner in T.P. 30.07	
Coy Ed. man.	(33) #326		N.E. to shiner in P.P. 39.52' S.E. to shiner in P.P. 58.85' S.W. to shiner in T.P. & cable 58.52' N.W. to shiner in P.P. 36.44'	
1/4 mi. East of Coy Ed. (man.)	(34) #327		S.E. to shiner in T.P. 44.71' S.W. to shiner in T.P. 80.67' N.W. to shiner in P.P. 31.23'	
La Mendorf Ed. (man.)	(35) #328		N.E. to shiner in P.P. 42.93' S.E. to shiner in cable pole 78.65' S.W. to shiner in T.P. & cable 38.91' N.W. to shiner in T.P. 64.25'	