

O.D.O.T. DISTRICT 2 SURVEY OFFICE (USE ONLY)

PERSONNEL \_\_\_\_\_

REFERENCE NO. 36

SHEET 11 OF 18

NOTES STONE

DATE 6/19/85

ROUTE SR 2

H.C. CURTIS

WEATHER SUNNY

COUNTY LUCAS

R.C. MICHALAK

TEMP. 60°

TOWNSHIP CITY OF OREGON

HOUSEHOLDER

SECTION 11

DWG BY NIESE PID \_\_\_\_\_

T 10 S R 8 E

TYPE MONUMENT R.R. SPIKE

ON SURFACE - ~~BELOW~~ ON

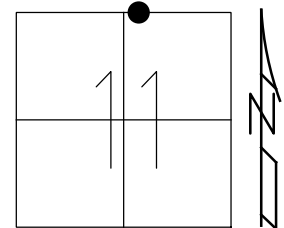
OFFSET  $\oslash$  PAVEMENT ON LT : RT

- TO - EDGE PAVEMENT

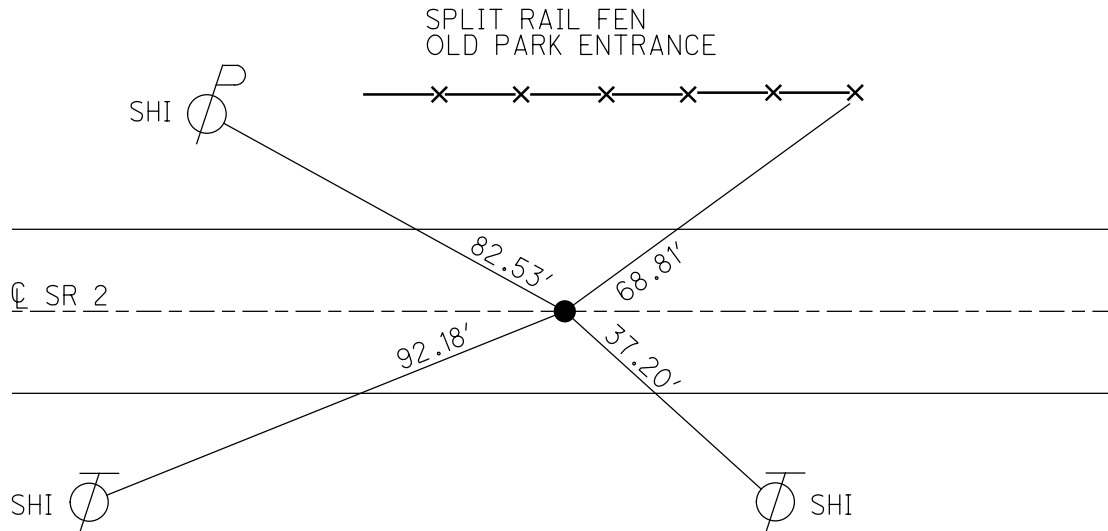
STATION: 1271+85

HORZ.DATUM: \_\_\_\_\_ GEOID: \_\_\_\_\_

GRID: NORTHING: \_\_\_\_\_ EASTING: \_\_\_\_\_



RECORD:  
FD R.R. SPIKE  
6/19/85, IRS  
FD R.R. SPIKE  
3" DOWN  
11/1/85

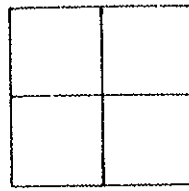


# O.D.O.T. DISTRICT 2 SURVEY OFFICE

PERSONNEL \_\_\_\_\_ REFERENCE NO. 36 SHEET 4 OF \_\_\_\_\_

NOTES 1. Stone  
 H.C. D. Coates DATE 19 June 85 ROUTE SR#2  
 R.C. R. Michalak WEATHER Sunny COUNTY Lucas  
J. Householder TEMP. 60° TOWNSHIP \_\_\_\_\_  
 SECTION \_\_\_\_\_  
 T \_\_\_\_\_ R \_\_\_\_\_

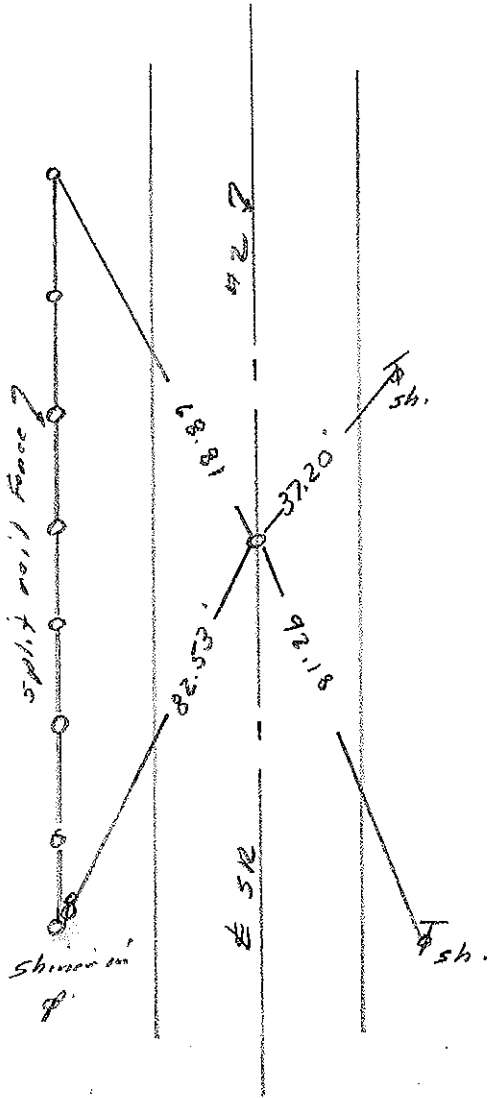
TYPE MONUMENT R.R. Spk.  
 ON SURFACE - BELOW Surface  
 LEFT - & PAV'T. - RIGHT \_\_\_\_\_  
 \_\_\_\_\_ TO \_\_\_\_\_ EDGE PAVEMENT  
 S.L.M. 1271 + 85



Fd. R.R. Spk. 3" deep - 11-1-85

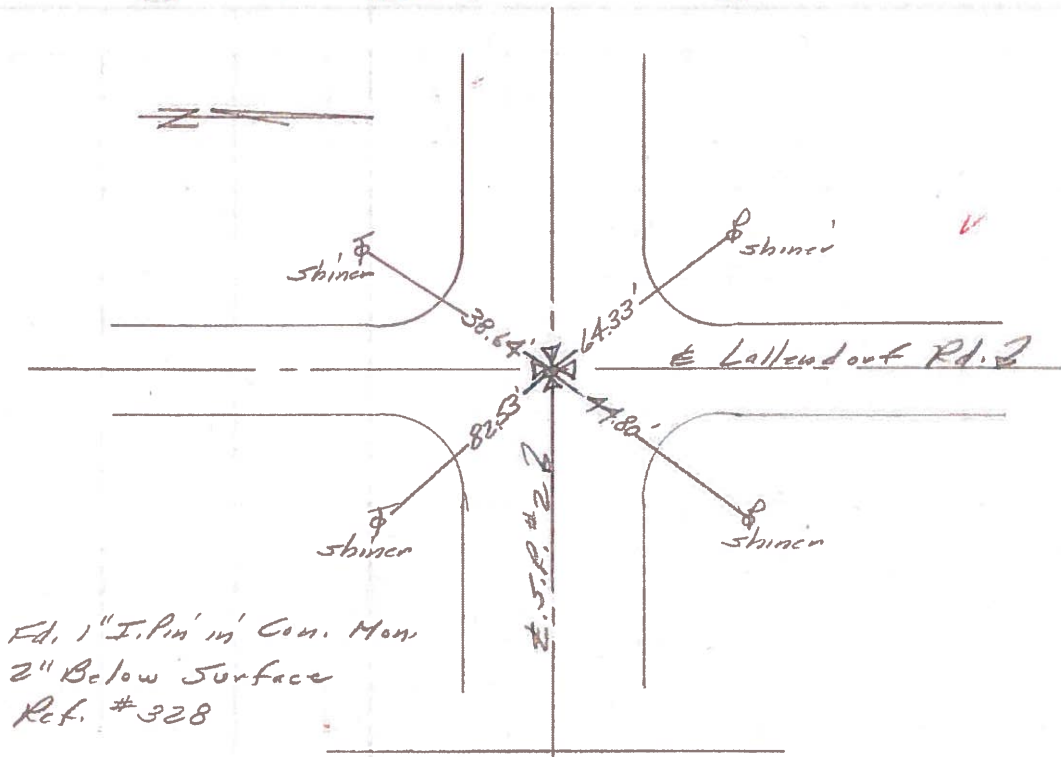


Old Entrance  
 To Pearson  
 Park. Now  
 Closed

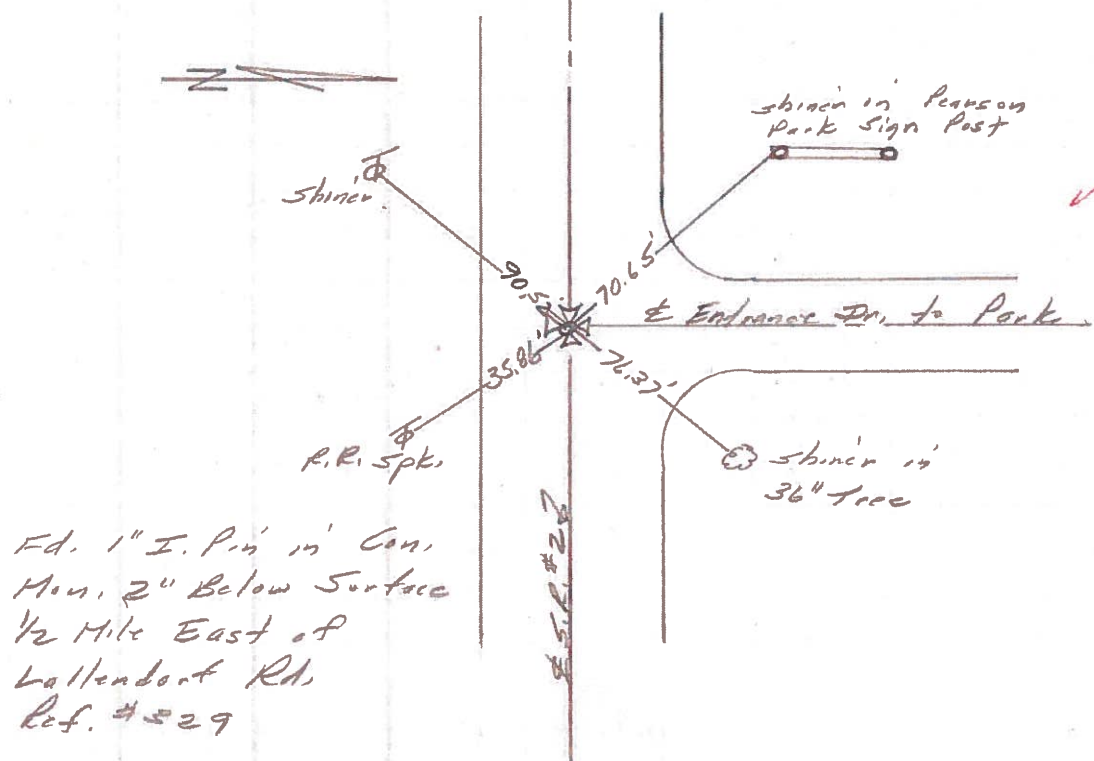


PERSONNEL	TITLE	PERSONNEL	TITLE	COUNTY	DATE	WEATHER	TEMP.
Stape	Notes			Lucas	6 July 71		
Michalala	H.C.						
Schroder	R.C.			S. R. #2		Windy	
Farr	RJ			SEC. O.H. Co. Line West			81°
DESCRIPTION	References to Control Points			JOB NO.			
	LEFT	CENTER LINE	RIGHT				

35

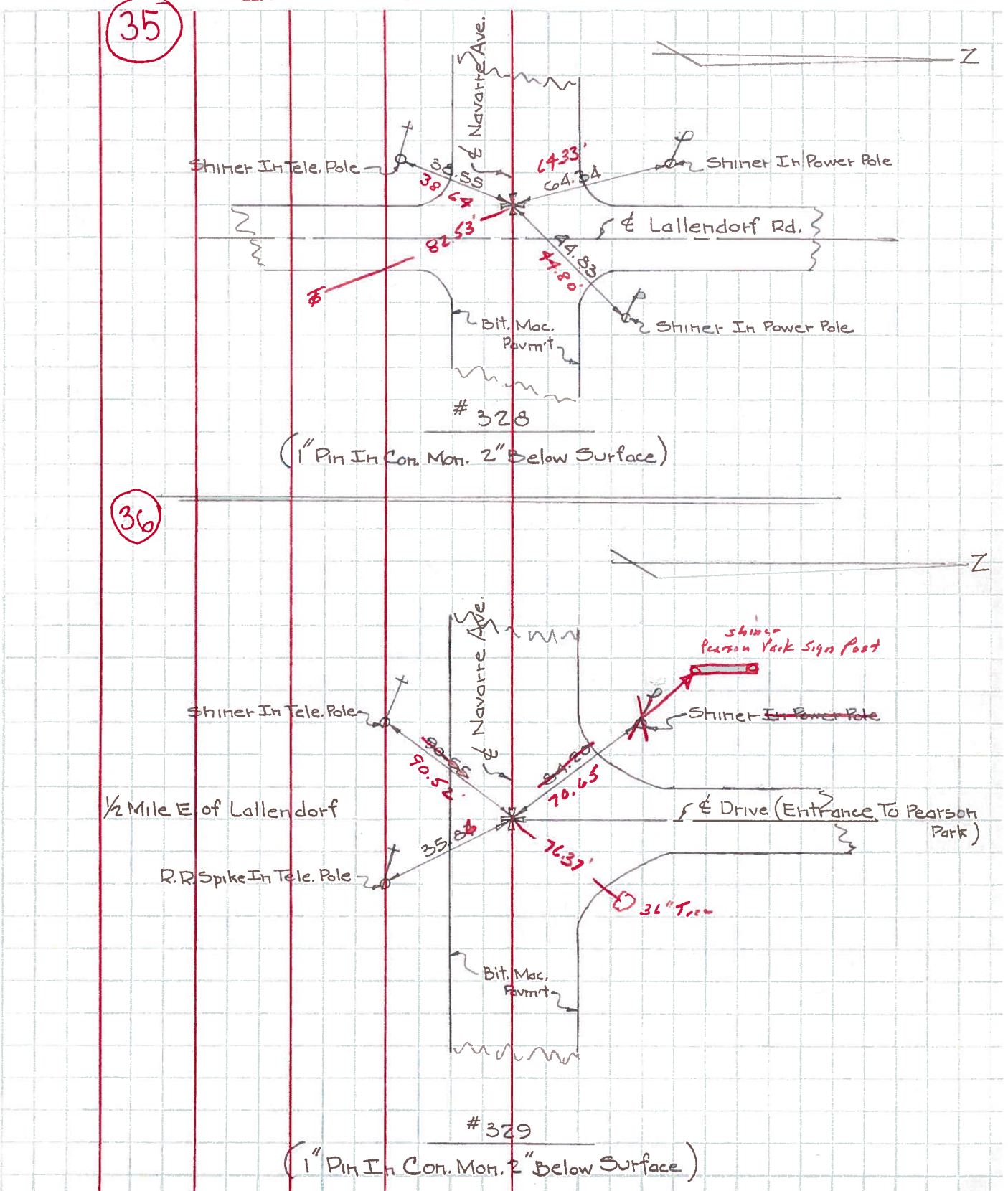


36



PERSONNEL	TITLE	PERSONNEL	TITLE	COUNTY	DATE	WEATHER	TEMP.
W. Denno				Lucas	Jan. 27, 1966	Snow	20°
D. Curtis				S. R. 2			
D. Granata				SEC.			
E. Oney							

DESCRIPTION Navarre Ave. - Ref. Mon. & Control Points JOB NO. \_\_\_\_\_





PERSONNEL TITLE PERSONNEL TITLE

COUNTY Lucas DATE 4-16-53

S. R. #2 WEATHER

SEC. TEMP.

DESCRIPTION LEFT CENTER LINE RIGHT JOB NO.

1/2 mi. East of Lallendorf  
(mon.)

(36)  
#329

S.E. to E.P. spike in T.P. 35.87'  
S.W. to shiner in T.P. 90.50'  
N.W. to shiner in P.P. 84.05'  
N.N.E. to stone gate post to park  
2<sup>nd</sup> stone up. 95.26

Wynn Rd.  
(mon.)

(37)  
#330

N.E. to top of cone shape C.B. top 38.42  
S.E. to shiner in T.P. & cable 43.76'  
S.W. to shiner in T.P. 72.27  
N.W. to shiner in P.P. 40.75'

1/2 mi. East of Wynn Rd.  
mon.

(37)  
#331

S.E. to shiner in T.P. 32.92'  
S.W. to shiner in T.P. 48.18'  
N.W. to shiner in P.P. 52.85'

Sta. 0+00  
Big Ditch Rd.  
Brass plate, 40 below put.  
in conc.

#332

N.E. to R.R. spike in tree 59.14'  
S.E. to shiner in P.P. 41.28'  
S.W. to base st. sign; ost 41.65'  
S.W. to "V" in Co. B.M. 53.73'  
N.W. to shiner in T.P. 42.64'

Sta. 53+26.35  
Norden Rd.  
Brass plate, 30 below top put.

(42)  
#333

N.E. to "V" in Co. B.M. #503 41.01'  
S. to conc. witness mon. 31.80'  
N.W. to shiner in Cor. Guard rail  
post 32.96