

O.D.O.T. DISTRICT 2 SURVEY OFFICE (USE ONLY)

PERSONNEL

REFERENCE NO. 37

SHEET 12 OF 18

NOTES STONE

DATE 6/19/85

ROUTE SR 2

H.C. CURTIS

WEATHER SUNNY

COUNTY LUCAS

R.C. MICHALAK
HOUSEHOLDER

TEMP. 60°

TOWNSHIP CITY OF OREGON

DWG BY NIESE PID _____

SECTION 11

T 10 S R 8 E

TYPE MONUMENT SQUARE BOLT

ON SURFACE - ~~BELOW~~ ON

OFFSET \varnothing PAVEMENT ON LT : RT

- TO - EDGE PAVEMENT

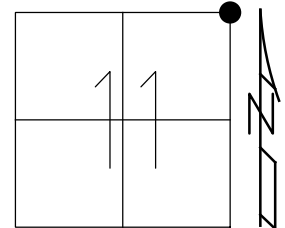
STATION: 1295+18

HORZ.DATUM: _____

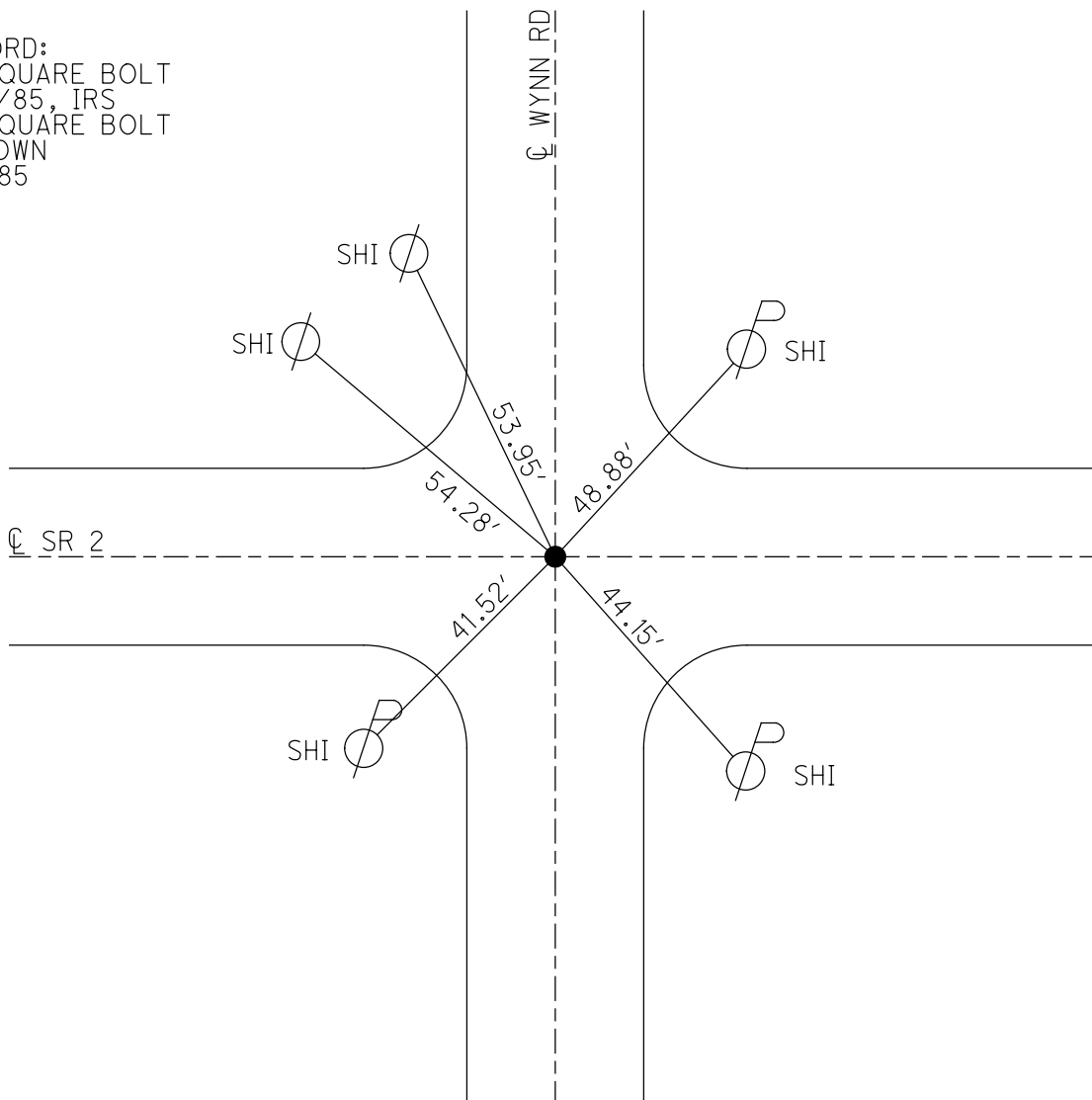
GEOID: _____

GRID: NORTHING: _____

EASTING: _____



RECORD:
FD SQUARE BOLT
6/19/85, IRS
FD SQUARE BOLT
2" DOWN
11/1/85



O.D.O.T. DISTRICT 2 SURVEY OFFICE

PERSONNEL

REFERENCE NO. 37

SHEET 5 OF

NOTES 1. Stone

H.C. D. Curtis

R.C. R. Michalok

J. Hauscholden

DATE 19 June 85

WEATHER Sunny

TEMP. 60°

ROUTE SR # 2

COUNTY Lucas

TOWNSHIP

SECTION

T R

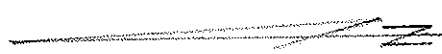
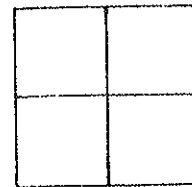
TYPE MONUMENT Square Bolt

ON SURFACE - BELOW Surface

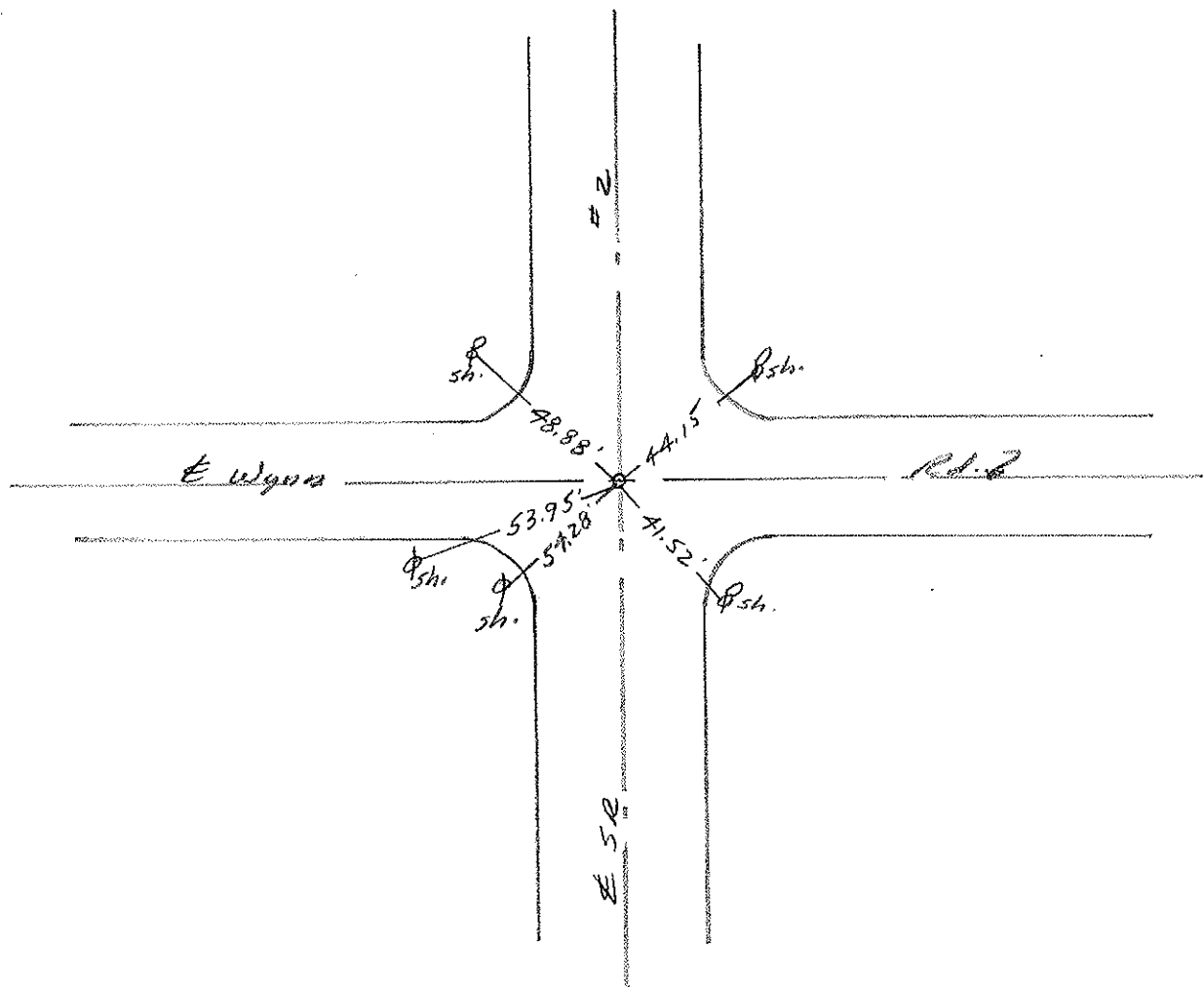
LEFT- & PAV'T. - RIGHT

 TO EDGE PAVEMENT

S.L.M. 1295+18 / 24.53



Fd. Sq. bolt 2" deep - 11-1-85

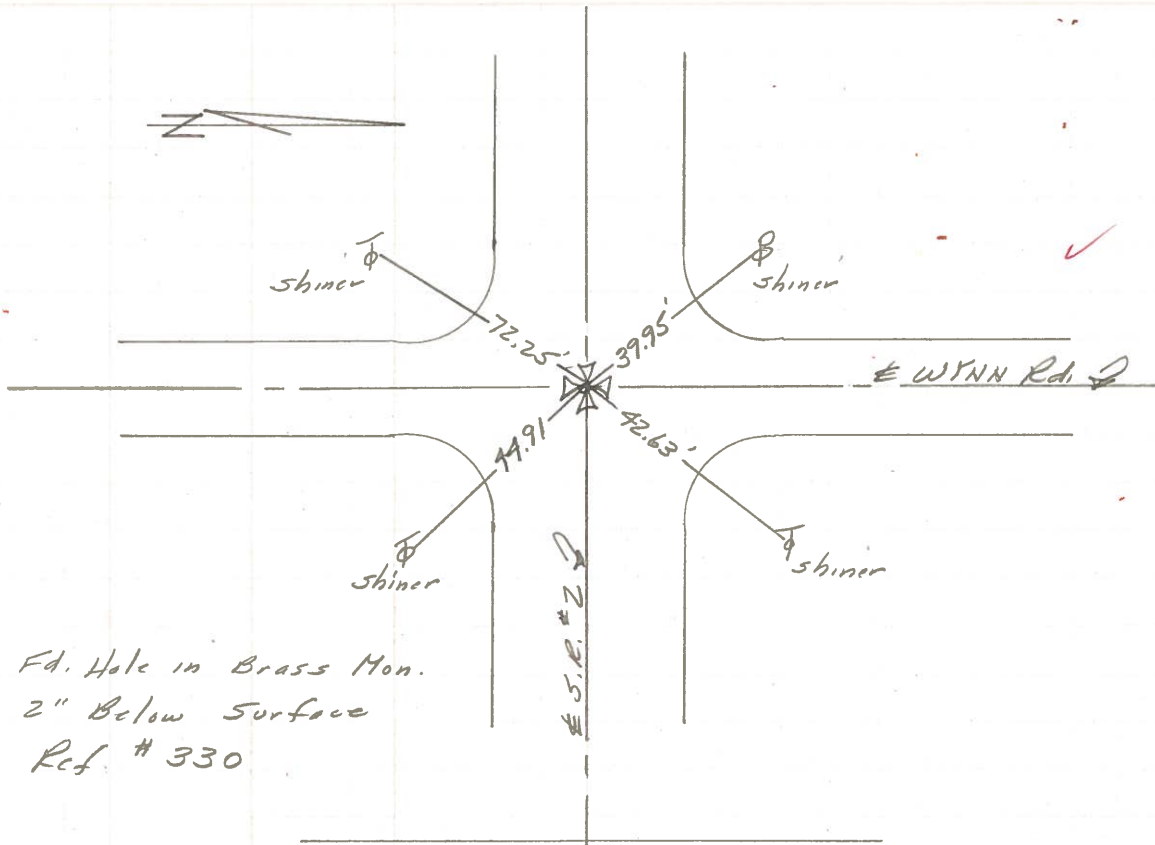


PERSONNEL	TITLE	PERSONNEL	TITLE
Stone	Notes		
Michalak	H.C.		
Schroder	FD		
Farr	R.C.		

COUNTY Lucas DATE 6 July 71
 S. R. #2 WEATHER Warm
 SEC. Off. Co. Line West TEMP. 81°

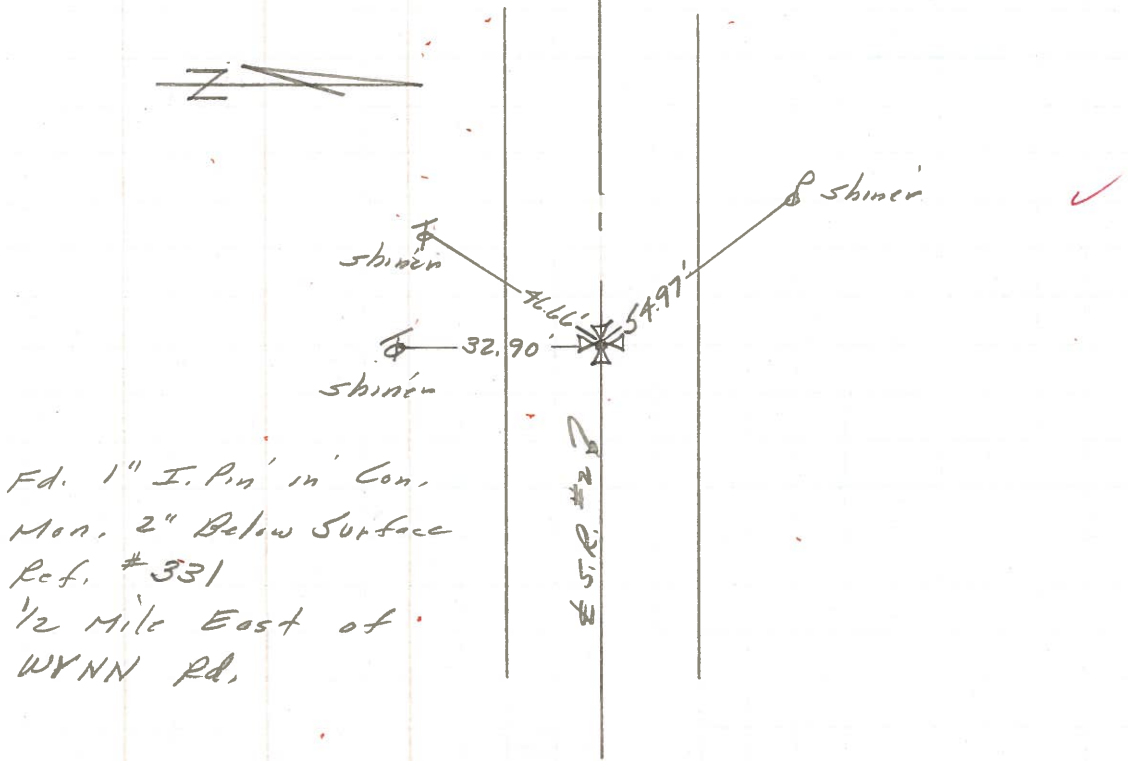
DESCRIPTION References to Control Points JOB NO. _____
 LEFT CENTER LINE RIGHT

(37)



Fd. Hole in Brass Mon.
 2" Below Surface
 Ref. # 330

(38)

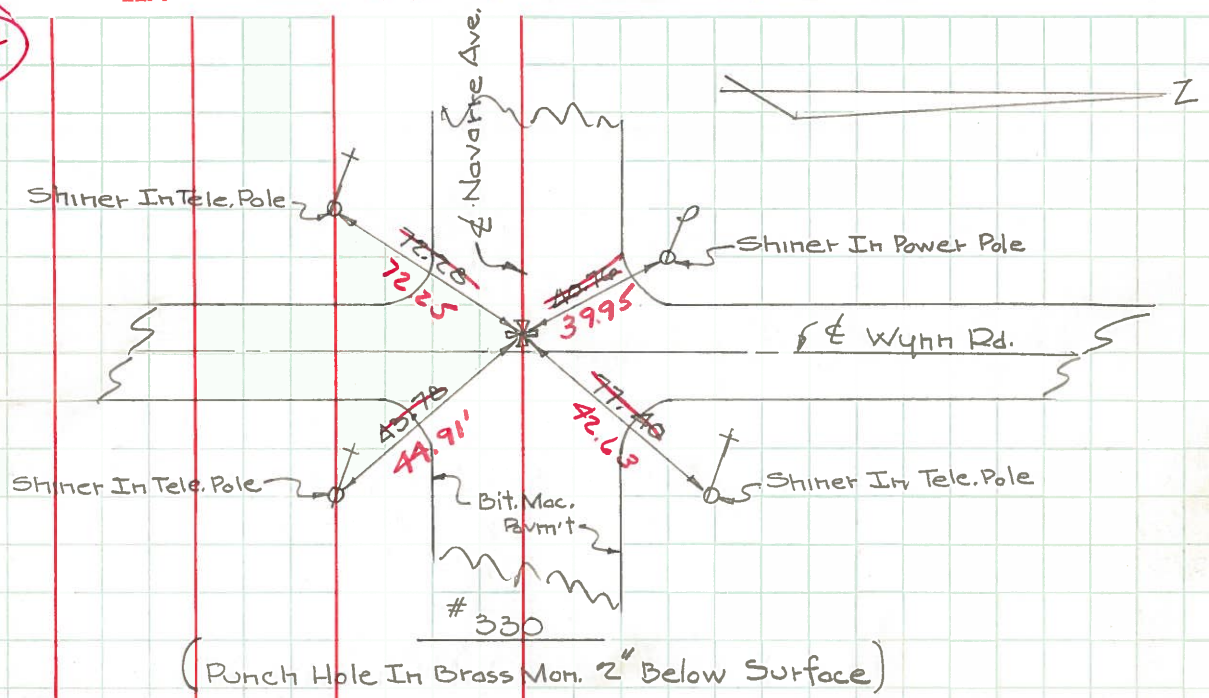


Fd. 1" I. Pin in Con.
 Mon. 2" Below Surface
 Ref. # 331
 1/2 Mile East of
 WYNN Rd.

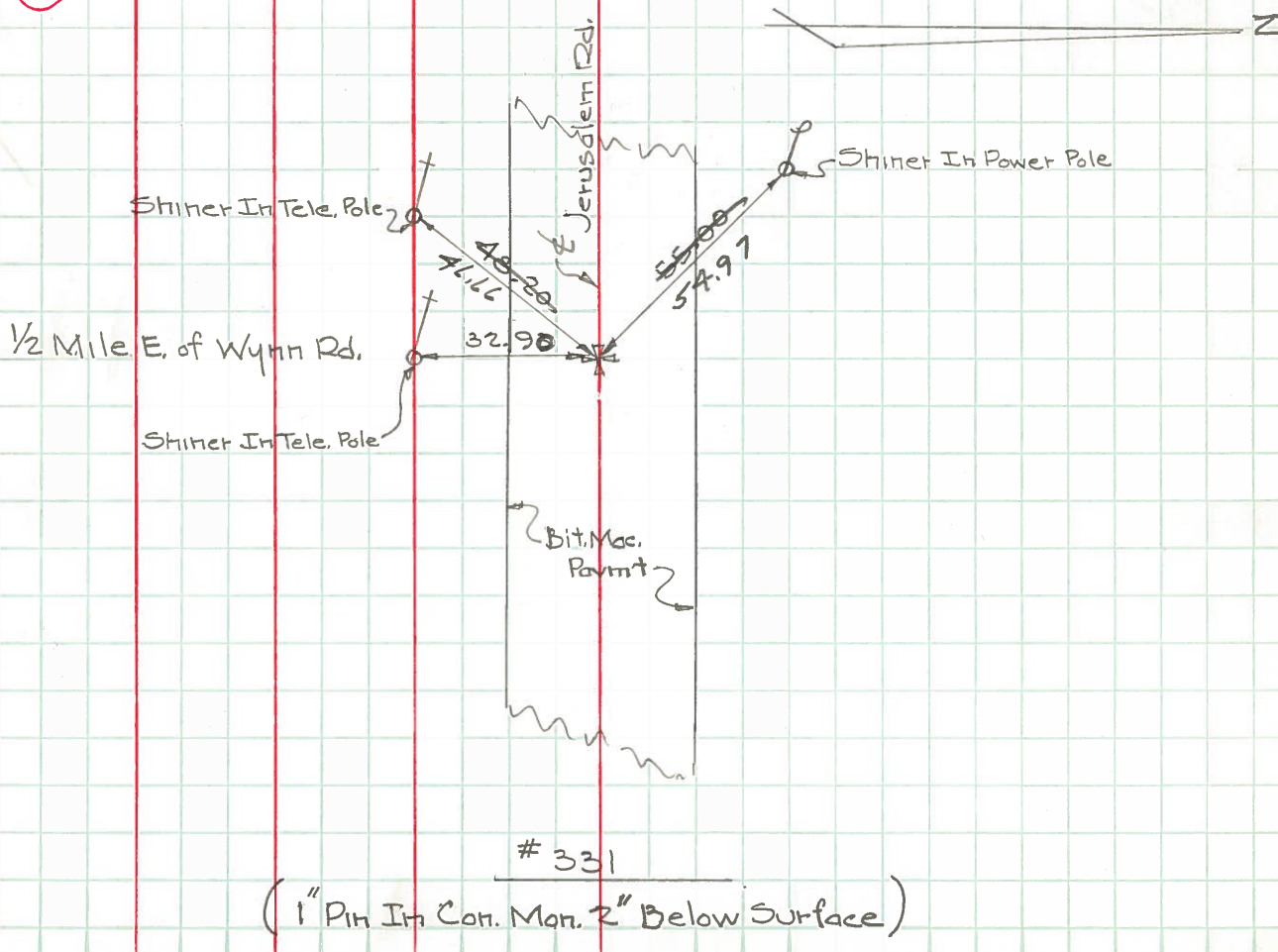
PERSONNEL	TITLE	PERSONNEL	TITLE	COUNTY	DATE	WEATHER	TEMP.
W. Denno				Lucas	Jan. 27, 1966	SNOW	20°
D. Curtis				S. R.	2		
D. Granata				SEC.			
F. Orney							

DESCRIPTION Jerusalem Rd. - Ref. Mon. & Control Points JOB NO. _____

37



38



PERSONNEL	TITLE	PERSONNEL	TITLE
COUNTY Lucas			
DATE 4-16-53			
S. R. #2			
WEATHER			
SEC.			
TEMP.			

DESCRIPTION	LEFT	CENTER LINE	RIGHT	JOB NO.
1/2 mi. East of Hallendorf (mon.)	(36) #329		S.E. to R.R. spike in T.P. 35.87' S.W. to shiner in T.P. 90.50' N.W. to shiner in P.P. 84.05' N.N.E. to stone gate post to park 2nd stone up. 95.26'	
Wynn Rd. (mon.)	(37) #330		N.E. to top cone shape C.E. top 38.42 S.E. to shiner in T.P. & cable 43.76 S.W. to shiner in T.P. 72.27 N.W. to shiner in P.P. 40.75'	
1/2 mi. East of Wynn Rd. mon.	(37) #331		S.E. to shiner in T.P. 32.92 S.W. to shiner in T.P. 48.18' N.W. to shiner in P.P. 53.85'	
Sta. 0+00 Big Ditch Rd. Brass plate .40 below put. in conc.	(37) #332		N.E. to R.R. spike in tree 59.14 S.E. to shiner in P.P. 41.28 S.W. to base st. sign post 41.65 S.W. to 'U' in Co. B.M. 53.73 N.W. to shiner in T.P. 42.64	
Sta. 53+26.35 Norden Rd. Brass plate .30 below top put.	(42) #333		N.E. to 'V' in Co. B.M. #503 41.01' S. to conc. witness mon. 31.80 N.W. to shiner in cor. Guard rail post 32.96	