

O.D.O.T. DISTRICT 2 SURVEY OFFICE (USE ONLY)

PERSONNEL

REFERENCE NO. 40

SHEET 15 OF 18

NOTES STONE

DATE 6/20/85

ROUTE SR 2

H.C. CURTIS

WEATHER SUNNY

COUNTY LUCAS

R.C. MICHALAK  
HOUSEHOLDER

TEMP. 64°

TOWNSHIP CITY OF OREGON

DWG BY NIESE PID \_\_\_\_\_

SECTION 7

T 10 S R 9 E

TYPE MONUMENT P.K. NAIL

ON SURFACE - ~~BELOW~~ ON

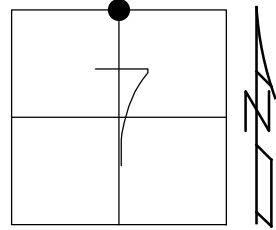
OFFSET Q PAVEMENT ON LT : RT

- TO - EDGE PAVEMENT

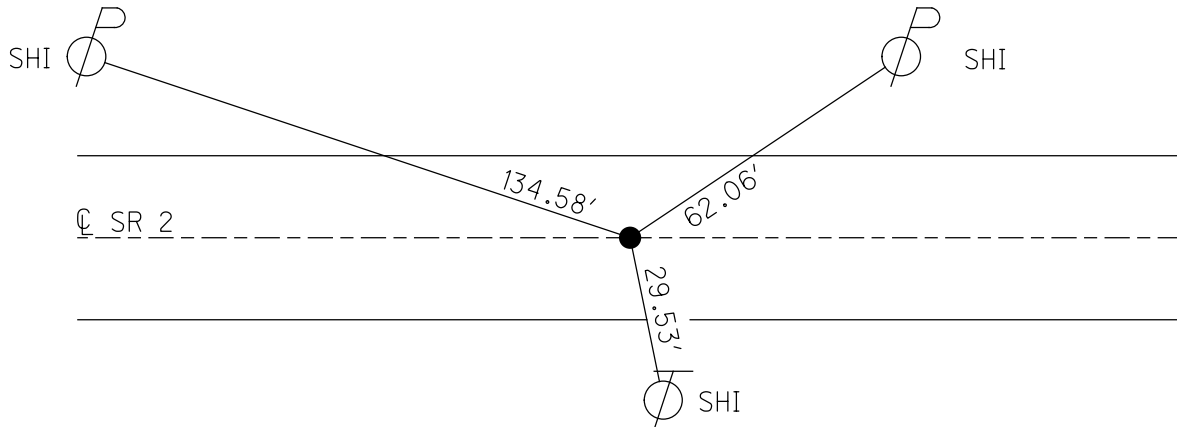
STATION: 1376+76

HORZ. DATUM: \_\_\_\_\_ GEOID: \_\_\_\_\_

GRID: NORTHING: \_\_\_\_\_ EASTING: \_\_\_\_\_



FD P.K. NAIL  
6/20/85, IRS  
SET P.K. NAIL  
11/1/85



O.D.O.T. DISTRICT 2 SURVEY OFFICE

PERSONNEL

REFERENCE NO. 40

SHEET 8 OF       

NOTES L. Stone

H.C. D. Curtis

R.C. R. Michalek

J. Hausholder

DATE 20 June 85

WEATHER Sunny

TEMP. 64°

ROUTE S.E.#2

COUNTY Lucas

TOWNSHIP       

SECTION Oregon

T.        R.       

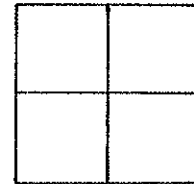
TYPE MONUMENT PK Nail

ON SURFACE - BELOW Surface

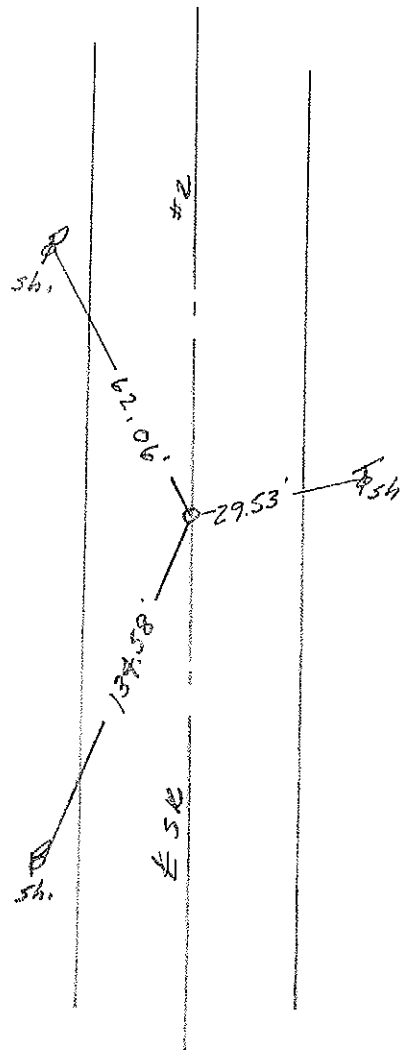
LEFT - & PAV'T. - RIGHT       

TO        EDGE PAVEMENT

S.L.M. 1376+76



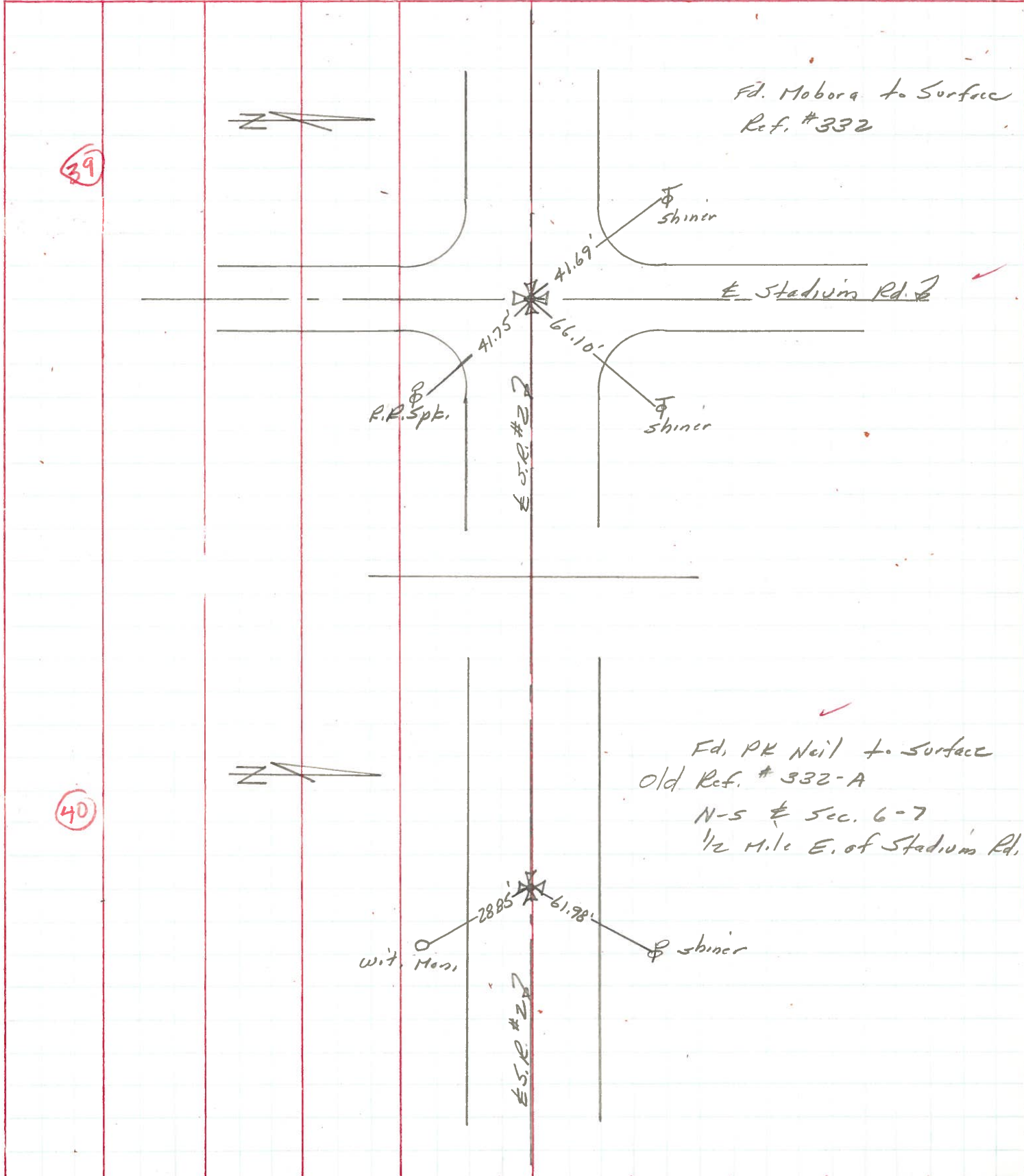
Set P.K. Nail to Surface - 11-1-85



PERSONNEL	TITLE	PERSONNEL	TITLE	COUNTY	DATE	WEATHER	TEMP.
Stone	Notes			Lucas	2 July 71	Warm	73°
Michalak	H.C.			# 2			
Schroeder	RS						
Farr	R.C.			Sec. Ott. Co. Line - West			

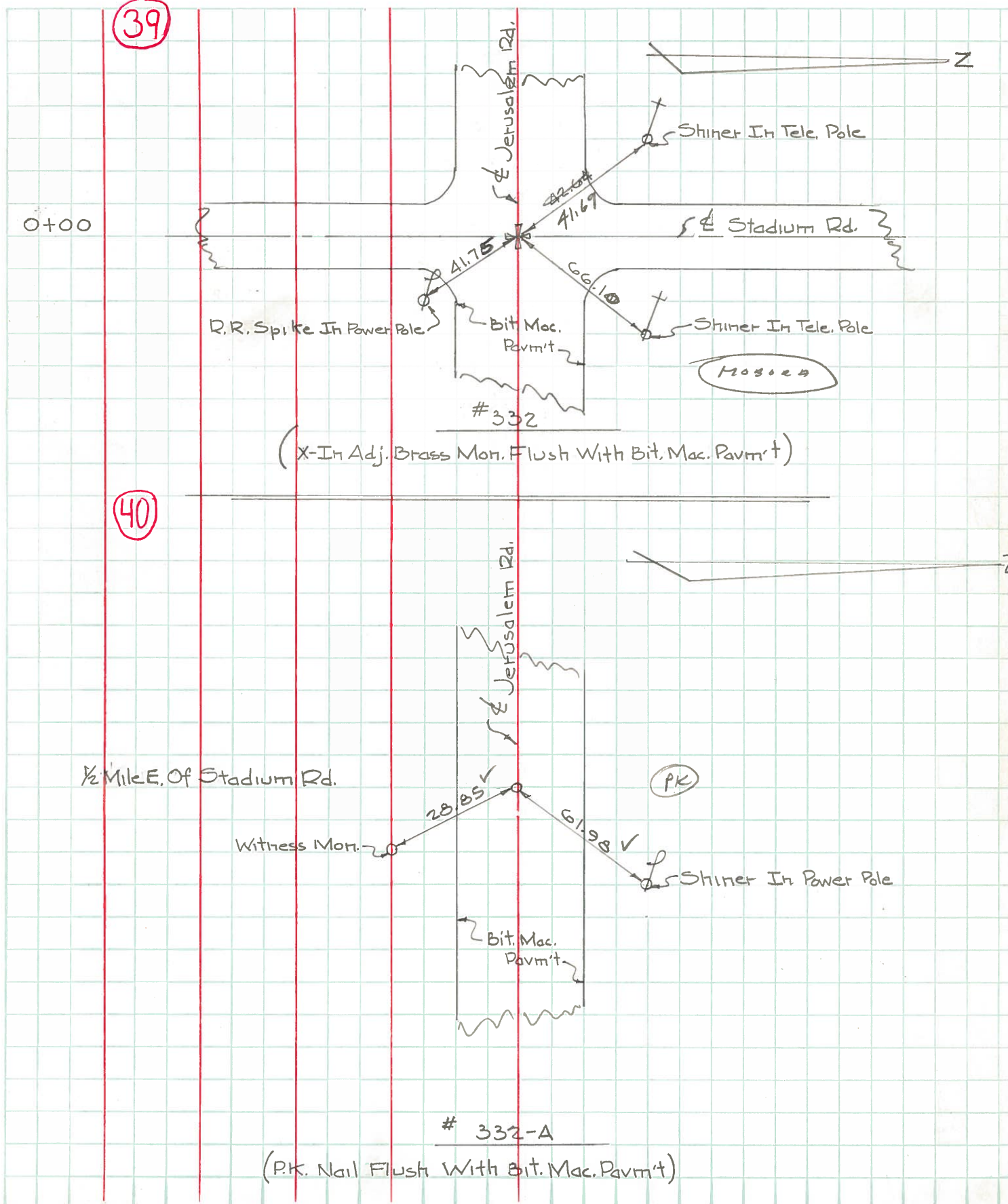
DESCRIPTION References to Control Points JOB NO. \_\_\_\_\_

LEFT CENTER LINE RIGHT



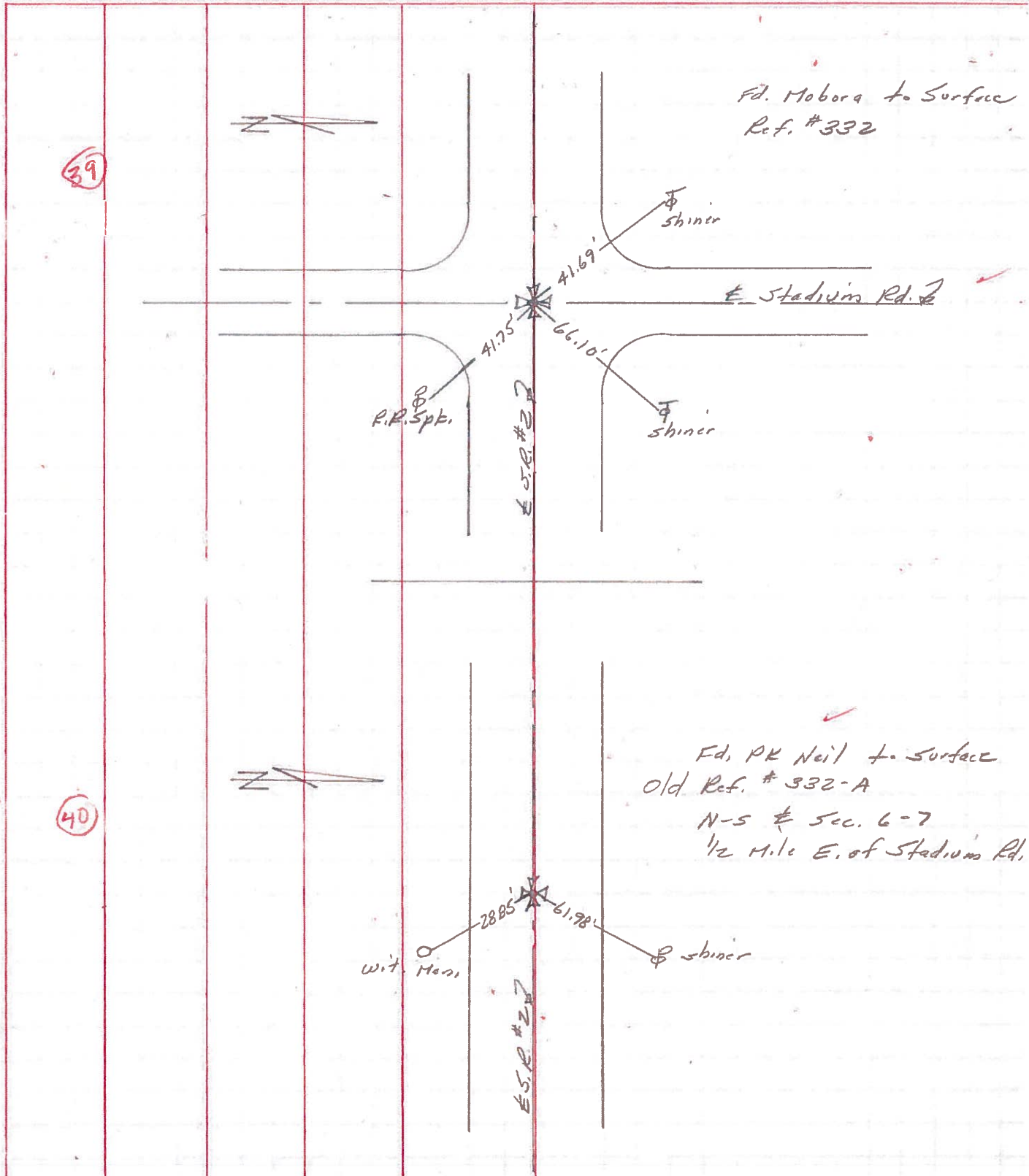
PERSONNEL	TITLE	PERSONNEL	TITLE	COUNTY	DATE	WEATHER	TEMP.
W. Denno				Lucas	Jan. 27, 1966	Show	20°
D. Curtis				S. R.	2		
D. Granata				SEC.			
F. Orney							

DESCRIPTION Jerusalem Rd. - Ref. Mon. & Control Points JOB NO. \_\_\_\_\_



PERSONNEL	TITLE	PERSONNEL	TITLE	COUNTY	DATE
Stone	Notes			Lucas	2 July 71
Michalak	H.C.			S. R. # 2	WEATHER Warm
Schroeder	RT			SEC. Off. Co. Line - West	TEMP 73°
Farr	R.C.				

DESCRIPTION References to Control Points LEFT CENTER LINE RIGHT JOB NO. \_\_\_\_\_





PERSONNEL	TITLE	PERSONNEL	TITLE	COUNTY	DATE	WEATHER	TEMP.
W. Denno				Lucas	Jan. 27, 1966	Snow	20°
D. Curtis				2			
D. Granata							
F. Orney							

DESCRIPTION Jerusalem Rd. - Ref. Mon. & Control Points JOB NO. \_\_\_\_\_

