

O.D.O.T. DISTRICT 2 SURVEY OFFICE (USE ONLY)

PERSONNEL _____

REFERENCE NO. 43

SHEET 18 OF 18

NOTES STONE

DATE 6/20/85

ROUTE SR 2

H.C. CURTIS

WEATHER SUNNY

COUNTY LUCAS

R.C. MICHALAK

TEMP. 66°

TOWNSHIP CITY OF OREGON

HOUSEHOLDER

SECTION 8

DWG BY NIESE PID _____

T 10 S R 9 E

TYPE MONUMENT P.K. NAIL

ON SURFACE - ~~BELOW~~ ON

OFFSET ☉ PAVEMENT ON LT : RT

- TO - EDGE PAVEMENT

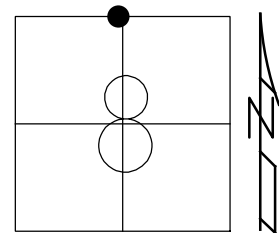
STATION: 1429+91

HORIZ.DATUM: _____

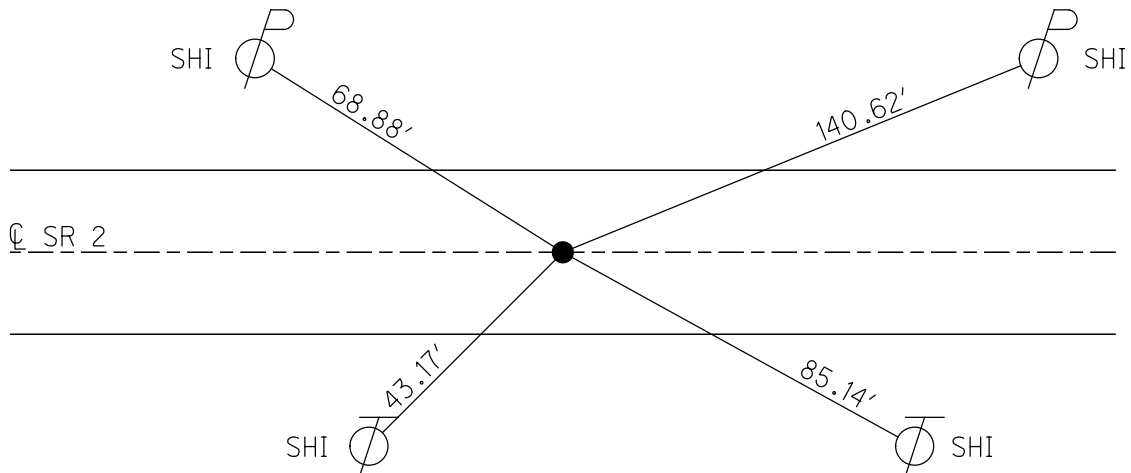
GEOID: _____

GRID: NORTHING: _____

EASTING: _____



RECORD:
FD P.K. NAIL
6/220/85, IRS
SET P.K. NAIL
11/1/85



O.D.O.T. DISTRICT 2 SURVEY OFFICE

PERSONNEL

REFERENCE NO. 43

SHEET 11 OF

NOTES 1. Stone

H.C. D. Curtis

DATE 20 June 85

ROUTE S.R.#2

R.C. R. Michaelak

WEATHER Sunny

COUNTY Lucas

To Household

TEMP. 66°

TOWNSHIP

SECTION Oregon

T R

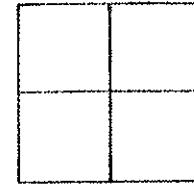
TYPE MONUMENT P.K. Nail

ON SURFACE - BELOW Surface

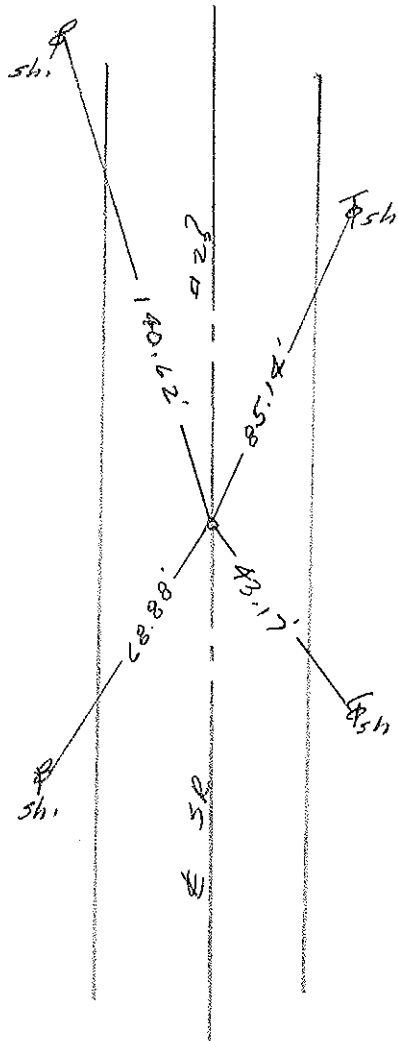
LEFT- & PAV'T. - RIGHT

 TO EDGE PAVEMENT

S.L.M. 1429+91

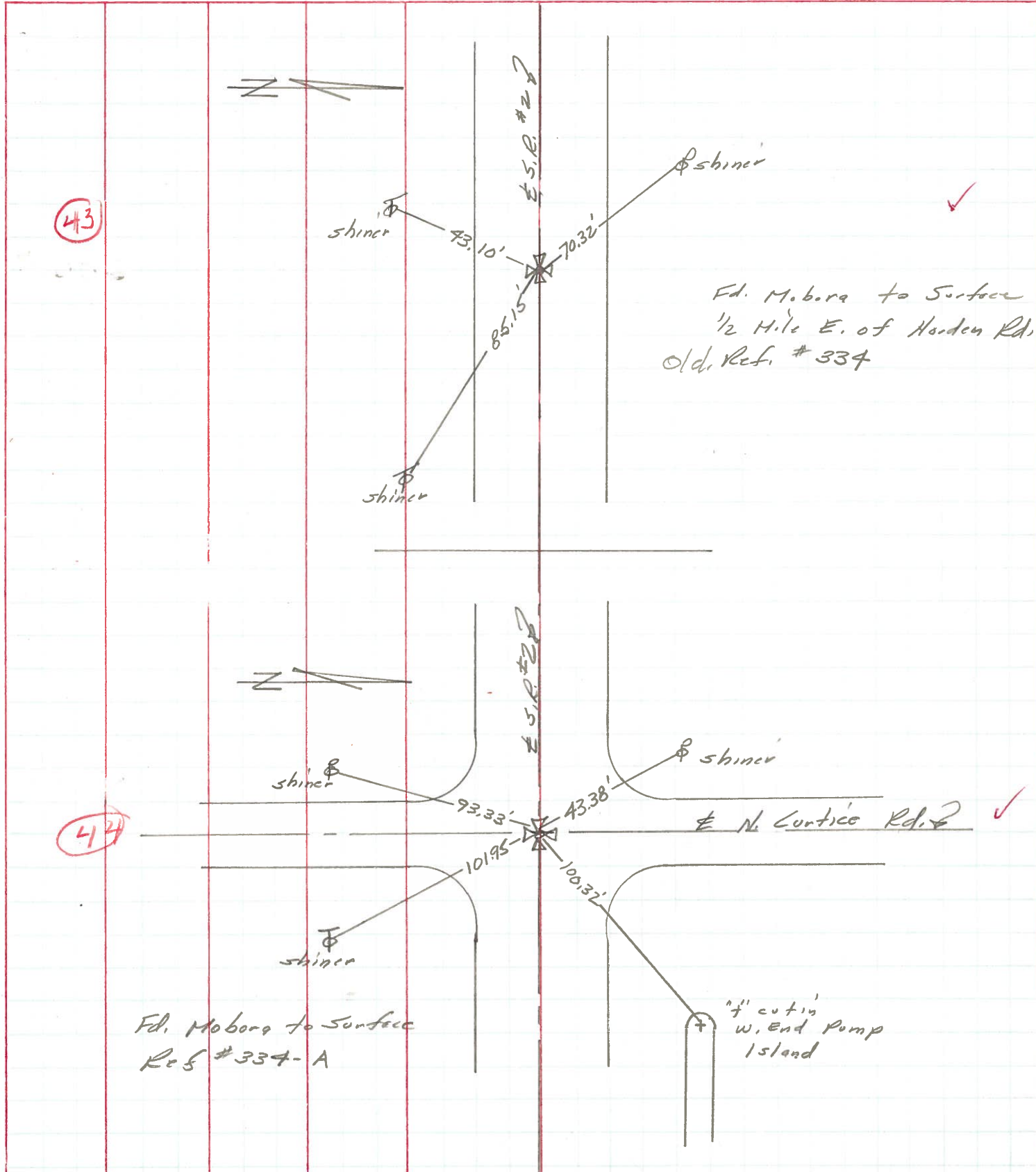


Set P.K. Nail to Surface - 11-1-85



PERSONNEL	TITLE	PERSONNEL	TITLE	COUNTY	DATE
Stone	Notes			Lucas	2 July 71
Michalak	H.C.			S. R. #2	WEATHER Fair
Schroeder	P.C.			SEC. 04, Co. Line West	TEMP. 70°
Farr	FD				

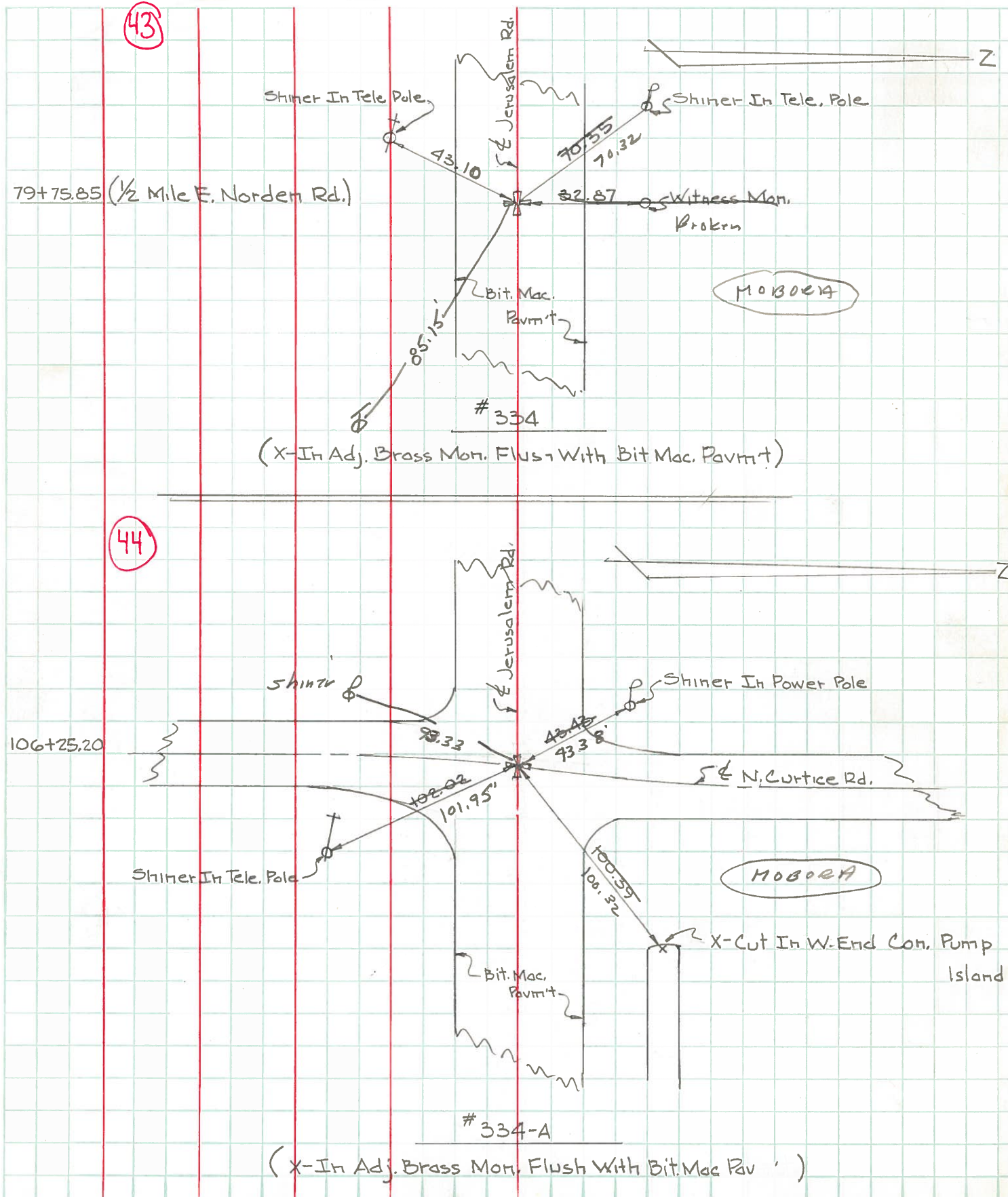
DESCRIPTION References to Control Points JOB NO. _____



PERSONNEL	TITLE	PERSONNEL	TITLE
W. Denno	_____	_____	_____
D. Curtis	_____	_____	_____
D. Granata	_____	_____	_____
F. Omey	_____	_____	_____

COUNTY Lucas DATE Jan. 27, 1966
 S. R. 2 WEATHER Snow
 SEC. _____ TEMP. 20°

DESCRIPTION Jerusalem Rd. - Ref. Mon. & Control Points JOB NO. _____
 LEFT CENTER LINE RIGHT



PERSONNEL TITLE PERSONNEL TITLE

COUNTY Lucas

DATE 3-23-54

S. R. #2

WEATHER

SEC.

TEMP.

DESCRIPTION

LEFT

CENTER LINE

RIGHT

JOB NO.

Sta. 79+75.85			N.W. to shiner in P.P. 70.25
	(43)		N.E. to shiner in 12" apple 57.30
	#334		S.E. to shiner in 18" apple 63.95
			S.E. to shiner in 28" Elm 30.04
Sta. 106+25.2 N. Curtice 1/2" iron pin			N.E. to x-in-w. end conc. pump island 99.7
	(44)		S.W. to + in N.E. Cor. conc. slab Gas Sta. 58.5
	#334-A		N.W. to shiner in P.P. 43.40
			S.E. to shiner in E.N.E. Guard rail post 47.2
Sta. 159+47.05 Cousino Rd. Fd. short P.P.'s - Nail 3' N.E., S.E. & W.			N.E. to conc. mon. 44.13
	(46)		S.W. to "V" in Co. B.M. 34.52
	#335		N.W. to conc. witness mon. 38.33
Sta. 212+43.14 Decant Rd. 1/2" brass pin - fd.			N.E. to conc. wit. mon. 49.46'
	(48)		S.E. to P.P. - shi. 43.26
	#336		S.W. to "V" in Co. B.M. 37.66'
			N.W. to + in S.E. cor. conc. platform 35.41'
Sta. 265+91.6 Yondota Rd. Fd. brass plate 1.45 below fault.			N.E. to shiner in T.P. 40.11
	(49)		S.W. to shiner in P.P. 41.46'
	#337		N.W. to conc. witness mon. 42.87