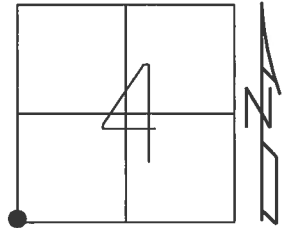


O.D.O.T. DISTRICT 2 SURVEY OFFICE (USE ONLY)

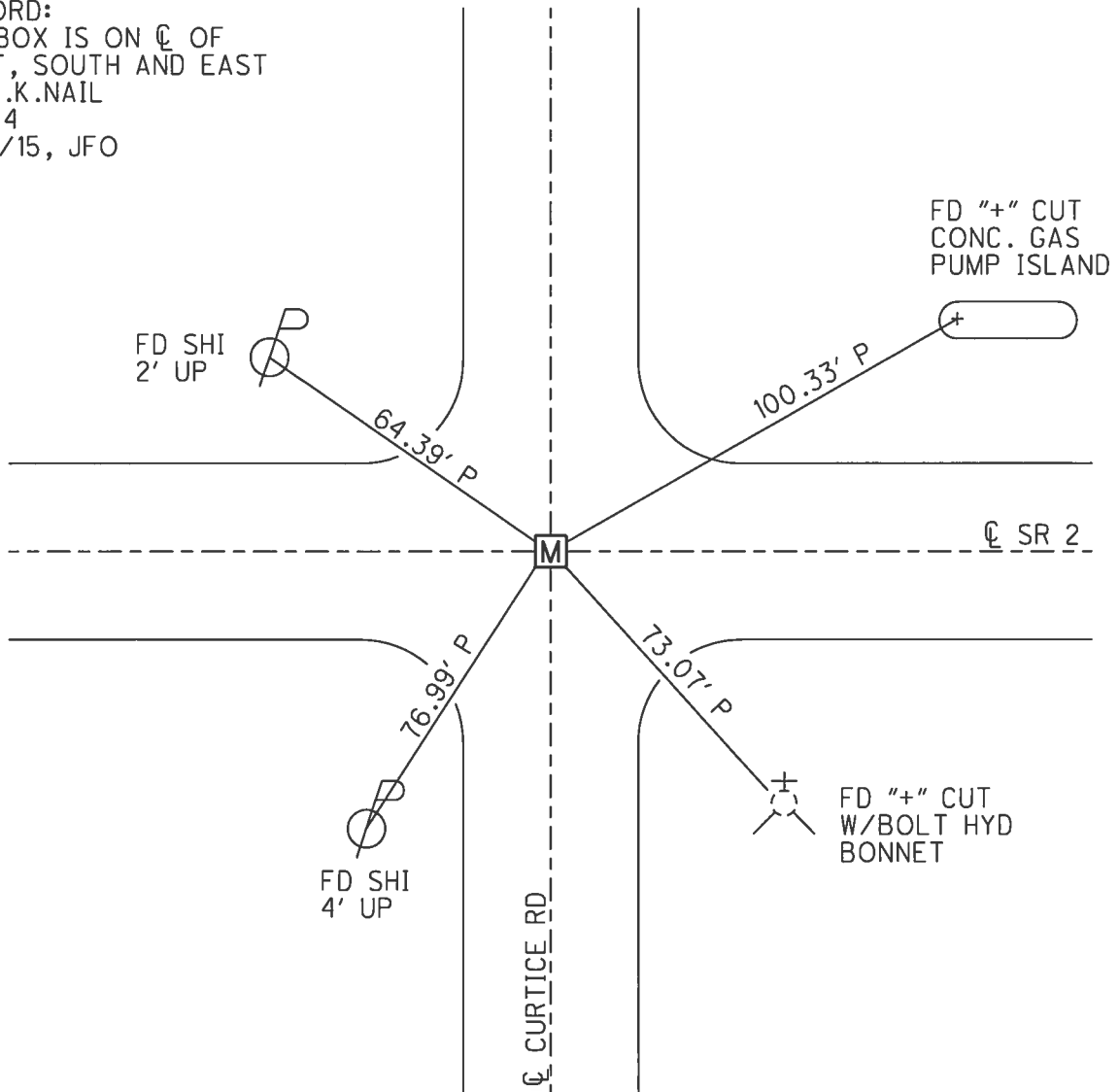
PERSONNEL	REFERENCE NO.	44	SHEET	1	OF	20
NOTES	LOEHRKE	DATE	8/14/96	ROUTE	2	
H.C.	ROUSOS	WEATHER	NICE	COUNTY	LUCAS	
R.C.	CANTERBURY	TEMP.	84°	TOWNSHIP	JERUSALEM	
				SECTION	4	
				T	10	S
				R	9	E

TYPE MONUMENT MONBOX W/DISK AND "+"  
 ON SURFACE - BELOW ON  
 LEFT - ☉ PAV'T - RIGHT ON  
- TO - EDGE PAVEMENT  
 S.L.M. 1452+48.36



GRID: NORTHING: 719494.494 EASTING: 1730515.553

RECORD:  
 MONBOX IS ON ☉ OF  
 WEST, SOUTH AND EAST  
 FD P.K.NAIL  
 REF44  
 3/16/15, JFO



# O.D.O.T. DISTRICT 2 SURVEY OFFICE

PERSONNEL \_\_\_\_\_

REFERENCE NO. 44

SHEET \_\_\_\_\_ OF \_\_\_\_\_

NOTES LA SHERKE

H.C. LUCAS

R.C. CANTERBURY

DATE 8-14-96

WEATHER Nice

TEMP. +84

ROUTE S.R. 2

COUNTY LUCAS

TOWNSHIP Jerusalem

SECTION 4

T. 10 N R. 9 E

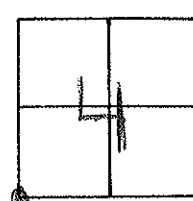
TYPE MONUMENT Disk with "4" INSIDE Mon Box

ON SURFACE - BELOW Yes

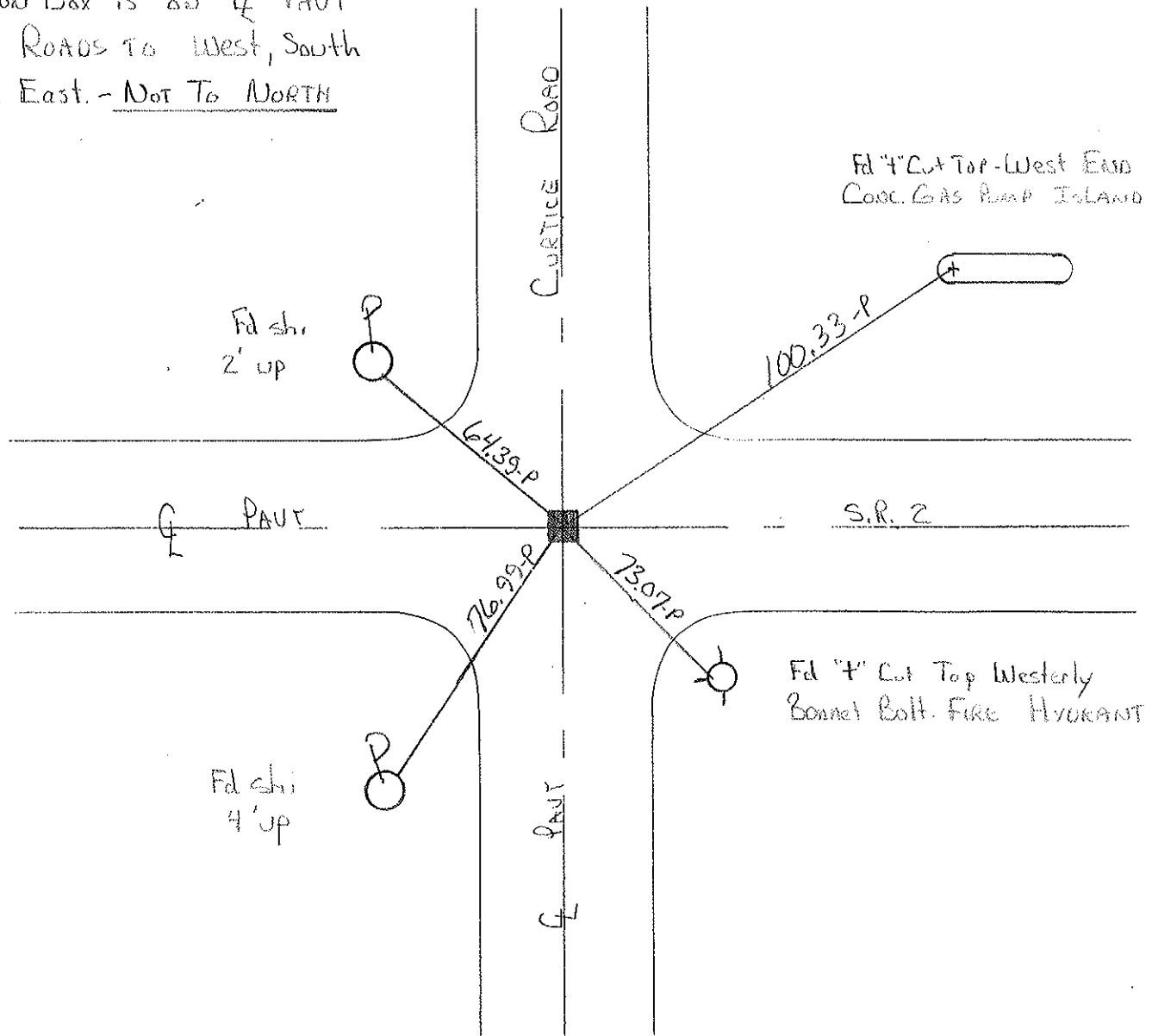
LEFT- & PAV'T. - RIGHT Yes

TO \_\_\_\_\_ EDGE PAVEMENT

S.L.M. Project Sta 1456+30



Mon Box is on & PAVT  
of ROADS TO West, South  
and East. - NOT TO NORTH



# O.D.O.T. DISTRICT 2 SURVEY OFFICE

PERSONNEL

REFERENCE NO. 44

SHEET 12 OF     

NOTES 1. Stone

H.C. D. Curtis

DATE 20 June 85

ROUTE S.R #2

R.C. R. Michalak

WEATHER Sunny

COUNTY Lucas

J. Householder

TEMP. 66°

TOWNSHIP Jerusalem

SECTION 4

T      R     

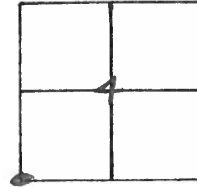
TYPE MONUMENT Mobora

ON SURFACE - BELOW 2" deep

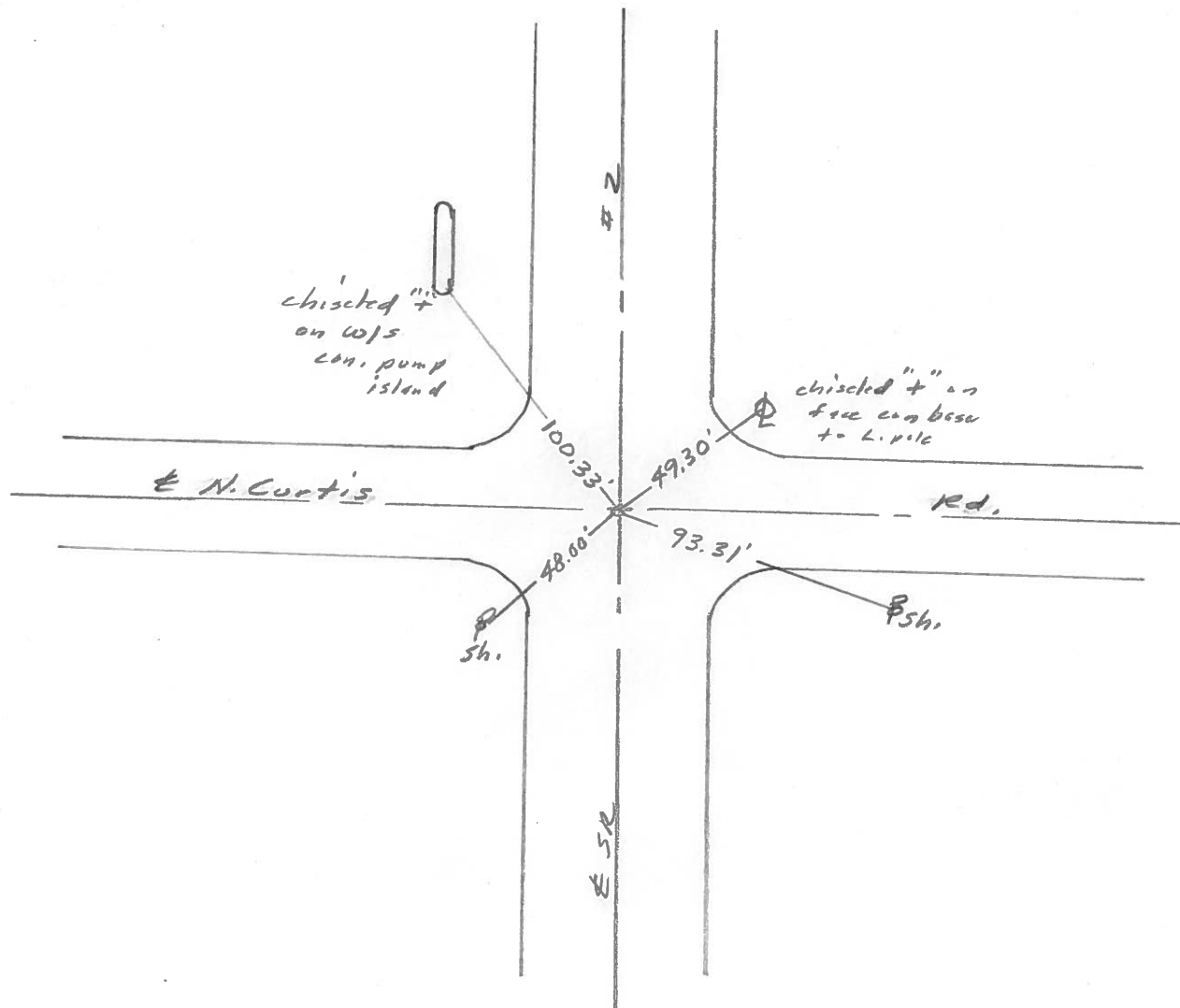
LEFT -  $\odot$  PAV'T. - RIGHT     

     TO      EDGE PAVEMENT

S.L.M. 1456+30

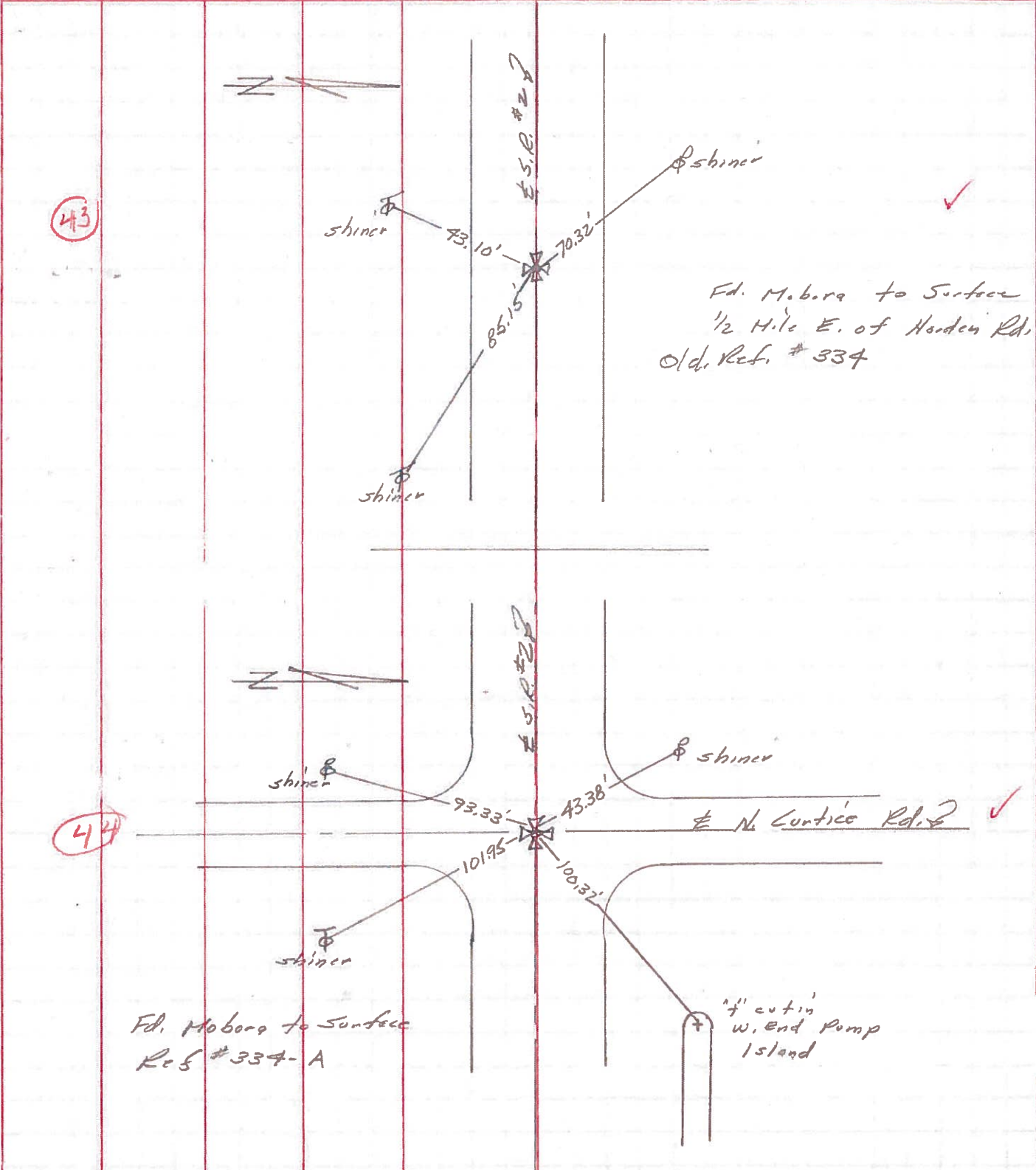


Fd. Mobora 4" deep - 11-1-85



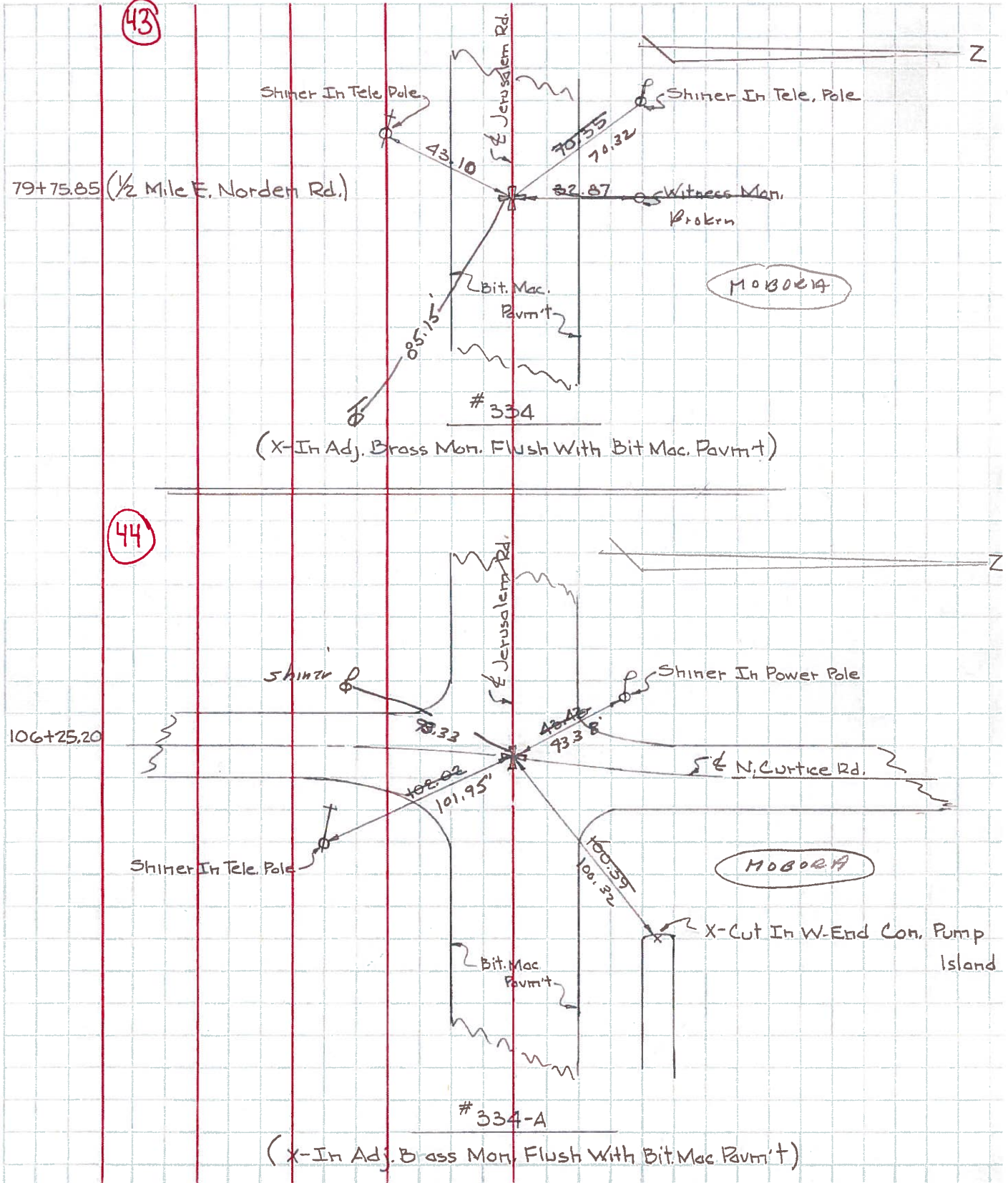
PERSONNEL	TITLE	PERSONNEL	TITLE	COUNTY	DATE
Stone	Notes			Lucas	2 July 71
Michalak	H.C.			#2	Fair
Schroder	P.C.				
Farr	FD			SEC. 04, Co. Line West	TEMP. 70°

DESCRIPTION References to Control Points JOB NO. \_\_\_\_\_



PERSONNEL	TITLE	PERSONNEL	TITLE	COUNTY	DATE	WEATHER	TEMP.
W. Denno				Lucas	Jan. 27, 1966	Snow	20°
D. Curtis				S. R. 2			
D. Granata				SEC.			
F. Omey							

DESCRIPTION Jerusalem Rd. - Ref. Mon. & Control Points JOB NO. \_\_\_\_\_





PERSONNEL TITLE PERSONNEL TITLE COUNTY Lucas DATE 3-23-54  
 S. R. #2 WEATHER  
 SEC. TEMP.

DESCRIPTION	LEFT	CENTER LINE	RIGHT	JOB NO.
Sta. 79+75.85			N.W. to shiner in P.P. 70.25	
	(43)		N.E. to shiner in 12" apple 57.30	
	#334		S.E. to shiner in 18" apple 63.95	
			S.E. to shiner in 28" Elm 30.04	
Sta. 106+25.2			N.E. to x-in W. end conc. pump ishd 99.7'	
N. Curtice			S.W. to + in N.E. Cor. conc slab Gas Sta. 58.6	
1/2" iron pin	(44)		N.W. to shiner in P.P. 43.40	
	#334-A		S.E. to shiner in EINE Guard rail post 47.2'	
Sta. 159+47.05			N.E. to conc. m. r. 44.13	
Cousino Ed.			S.W. to "V" in Co. B.M. 34.52	
Ed short P.P. - Nail 3' N.E., S.E. & W.	(46)		N.W. to conc. witness mon. 38.33	
	#335			
Sta. 212+43.14			N.E. to conc. wit. mon. 49.46'	
Decant Ed.			S.E. to P.P. - shi 43.26	
1/2" brass pin - fd.	(48)		S.W. to "V" in Co. B.M. 37.66'	
	#336		N.W. to + in S.E. cor. conc. platform 35.41'	
Sta. 265+91.6			N.E. to shiner in T.P. 40.11'	
Yondota Ed.			S.W. to shiner in P.P. 41.46'	
Fd. brass plate 1.45 below fault.	(49)		N.W. to conc. witness mon. 42.87	
	#337			



PERSONNEL TITLE PERSONNEL TITLE

COUNTY DATE Mar. 22 '54

S. R. WEATHER

SEC. TEMP.

DESCRIPTION LEFT CENTER LINE RIGHT JOB NO.

44

15 9 4  
7 0 5  
79 7120

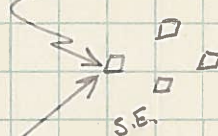
#334-A

in hole

✓ 4" W. End  
Conc. Pump  
Island



Shiner In Guard Post



106+25.2 N. Curvice

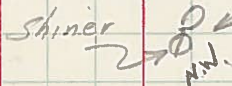
99.74

47.23

1/2" Iron Pin (Found)

43.40

58.54



B.W.

4" N.E. Cor Conc. Slab

Gas Sto.

#334 ✓

79+75.85

