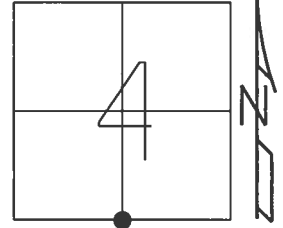


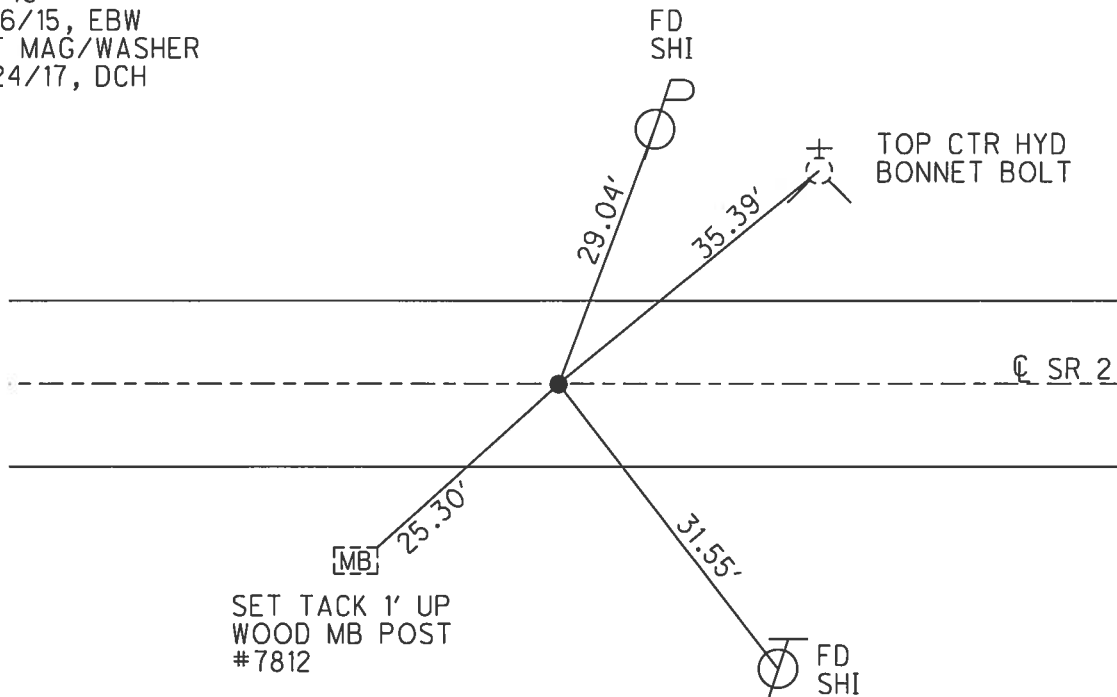
O.D.O.T. DISTRICT 2 SURVEY OFFICE (USE ONLY)

PERSONNEL _____ REFERENCE NO. 45 SHEET 2 OF 20
 NOTES LEU DATE 8/16/2016 ROUTE 2
 H.C. HOMAN WEATHER CLOUDY, WIND COUNTY LUCAS
 R.C. RHOADES TEMP. 74° TOWNSHIP JERUSALEM
 _____ SECTION 4
 _____ T 10 S R 9 E

TYPE MONUMENT P.K./WASHER
 ON SURFACE - ~~BELOW~~ ON _____
 LEFT - ☉ PAV'T - RIGHT ON _____
12.1 TO LT EDGE PAVEMENT
 S.L.M. 1479+09.51
 GRID: NORTHING: 719487.805 EASTING: 1733176.697



RECORD:
 FD P.K.NAIL
 3/28/96, MB
 SET P.K./WASHER
 7/22/96, MB
 FD P.K./WASHER
 REF45
 3/16/15, EBW
 SET MAG/WASHER
 8/24/17, DCH



O.D.O.T. DISTRICT 2 SURVEY OFFICE

PERSONNEL _____

REFERENCE NO. 45

SHEET 1 OF 7

NOTES CORDES

H.C. CORDES

R.C. BARNHISEL

DATE 3-28-96

WEATHER SUNNY

TEMP. +30°F

ROUTE 2

COUNTY LUCAS

TOWNSHIP JERUSALEM

SECTION 4

T10 S R 9 E

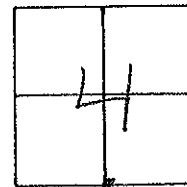
TYPE MONUMENT PK" NAIL

ON SURFACE - ~~BELOW~~ YES

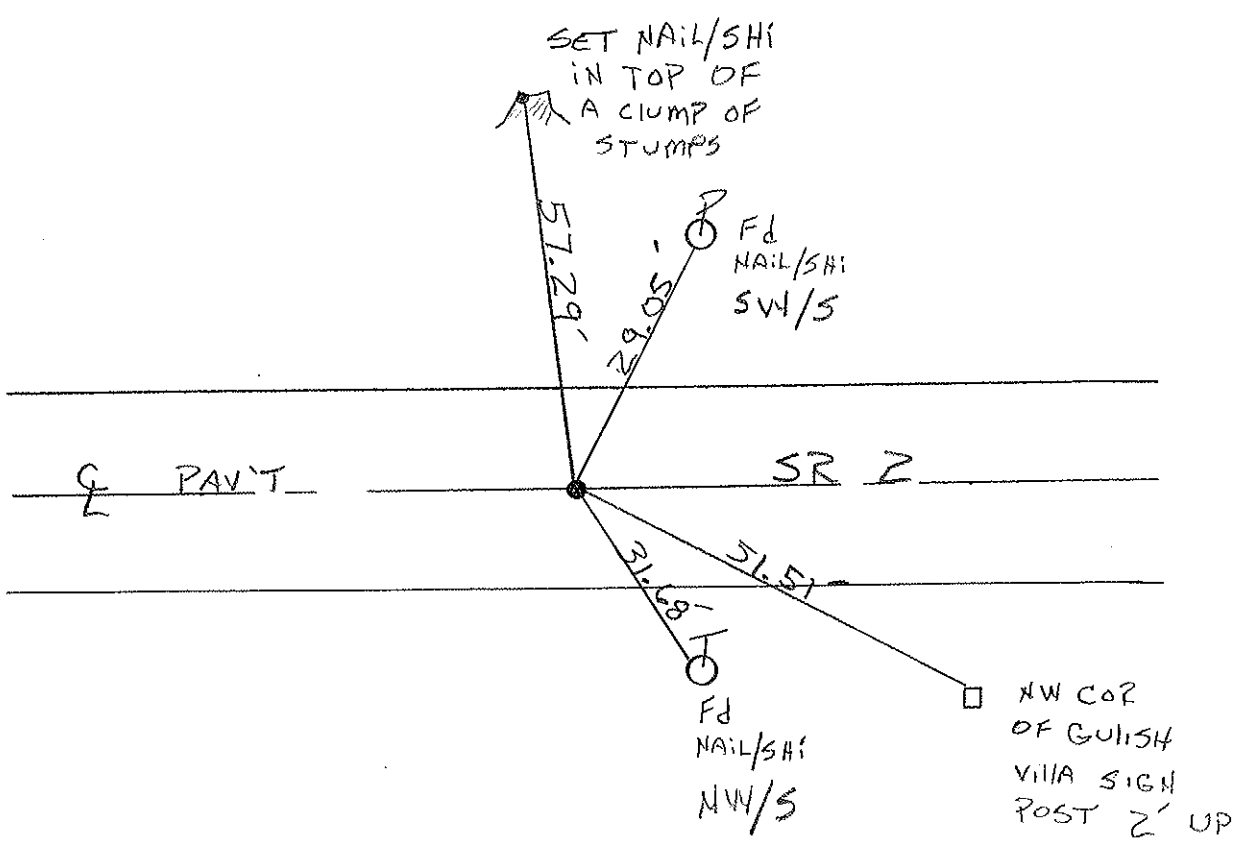
~~LEFT~~ PAV'T. - ~~RIGHT~~ YES

12.1 TO LT EDGE PAVEMENT

S.L.M. 1482+97



Reset PK & WASHER
7-22-96
MCR



Re-Survey 1996

O.D.O.T. DISTRICT 2 SURVEY OFFICE

PERSONNEL

REFERENCE NO. 45

SHEET 13 OF

NOTES 1. Stone

H.C. D. Curtis

DATE 20 June 85

ROUTE S.R. # 2

R.C. R. Michalak

WEATHER Sunny

COUNTY Lucas

J. Householder

TEMP. 67°

TOWNSHIP Jerusalem

SECTION 4

T R

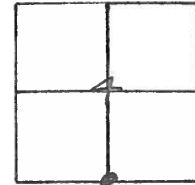
TYPE MONUMENT PK Nail

ON SURFACE - BELOW Surface

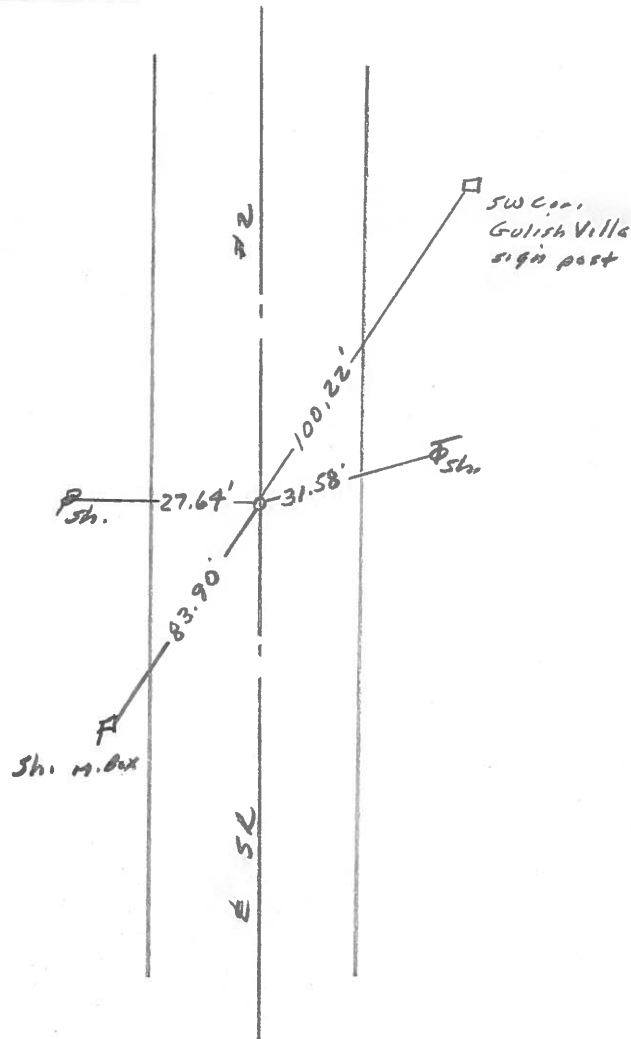
LEFT - \odot PAV'T. - RIGHT

 TO EDGE PAVEMENT

S.L.M. 1483 + of



Set P.K. Nail to Surface - 11-1-85



PERSONNEL	TITLE	PERSONNEL	TITLE	COUNTY	DATE
Stone	Notes			Lucas	1 July 71
Michalek	H.C.			S. R. #2	WEATHER Warm
Schnoder	R.C.			SEC. 04, Co. Line West	TEMP. 79°
Farr	FD				

DESCRIPTION References to Control Points JOB NO. _____

