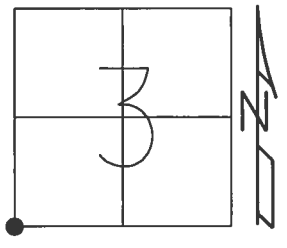


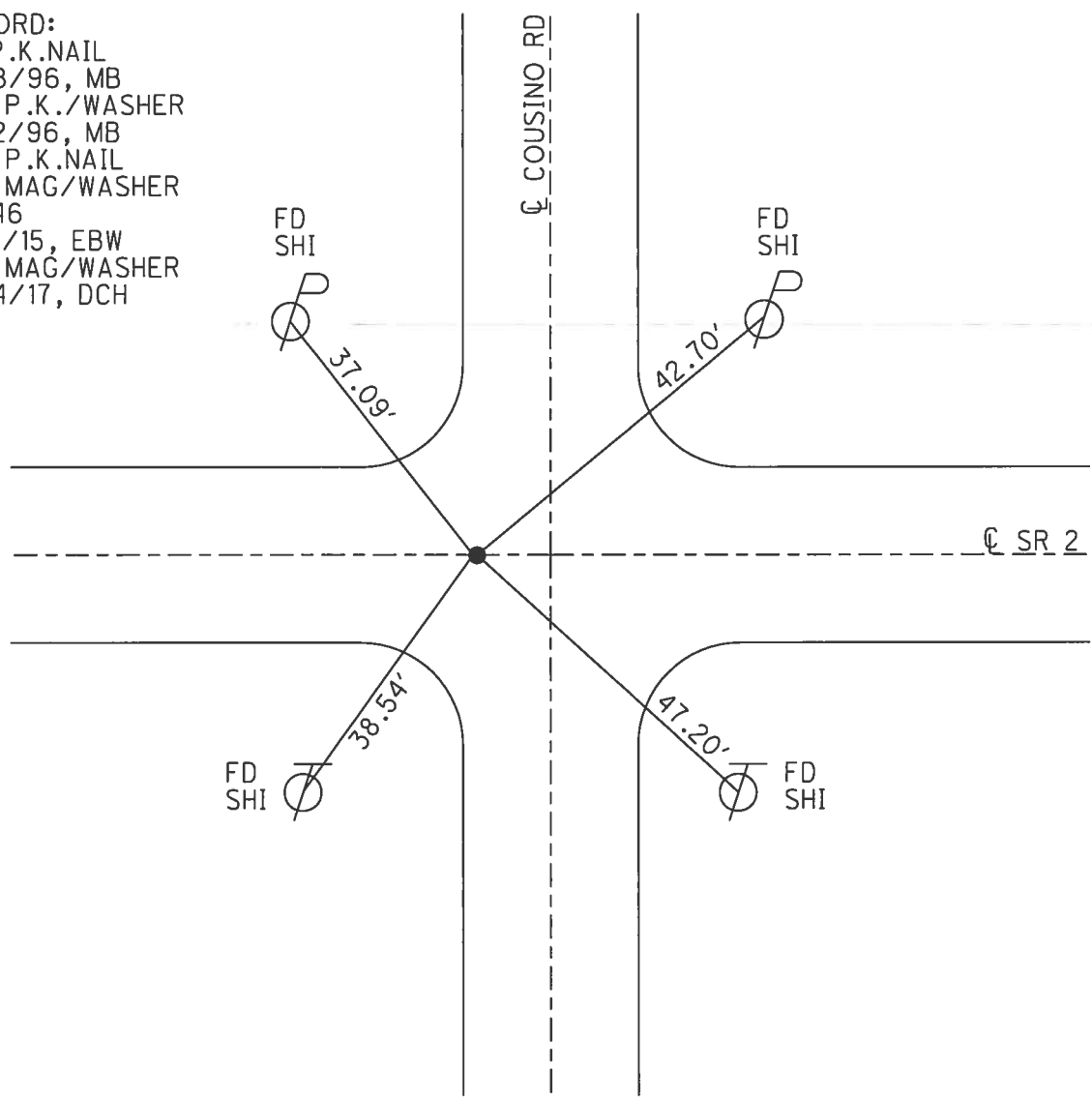
O.D.O.T. DISTRICT 2 SURVEY OFFICE (USE ONLY)

PERSONNEL _____ REFERENCE NO. 46 SHEET 3 OF 20
 NOTES LEU DATE 8/16/16 ROUTE 2
 H.C. HOMAN WEATHER CLOUDY, WIND COUNTY LUCAS
 R.C. RHOADES TEMP. 74° TOWNSHIP JERUSALEM
 SECTION 3
 T 10 S R 9 E

TYPE MONUMENT MAG/WASHER
 ON SURFACE - ~~BELOW~~ ON _____
 LEFT - ☉ PAV'T - RIGHT ON, 8.1' W OF ☉ S
TO EDGE PAVEMENT
 S.L.M. 1505+70.99
 GRID: NORTHING: 719481.347 EASTING: 1735838.171



RECORD:
 FD P.K.NAIL
 3/28/96, MB
 SET P.K./WASHER
 7/22/96, MB
 DNF P.K.NAIL
 SET MAG/WASHER
 REF46
 3/16/15, EBW
 SET MAG/WASHER
 8/24/17, DCH



O.D.O.T. DISTRICT 2 SURVEY OFFICE

PERSONNEL _____

REFERENCE NO. 46

SHEET 2 OF 7

NOTES BARNHISEL RC

H.C. CORDES

R.C. _____

DATE 3-28-96

WEATHER SUNNY

TEMP. +30° F

ROUTE 2

COUNTY LUCAS

TOWNSHIP Jerusalem

SECTION 3

T10 S R 9 E

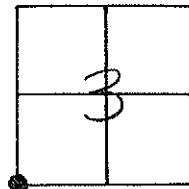
TYPE MONUMENT P.K. NAIL

ON SURFACE - ~~BELOW~~ yes

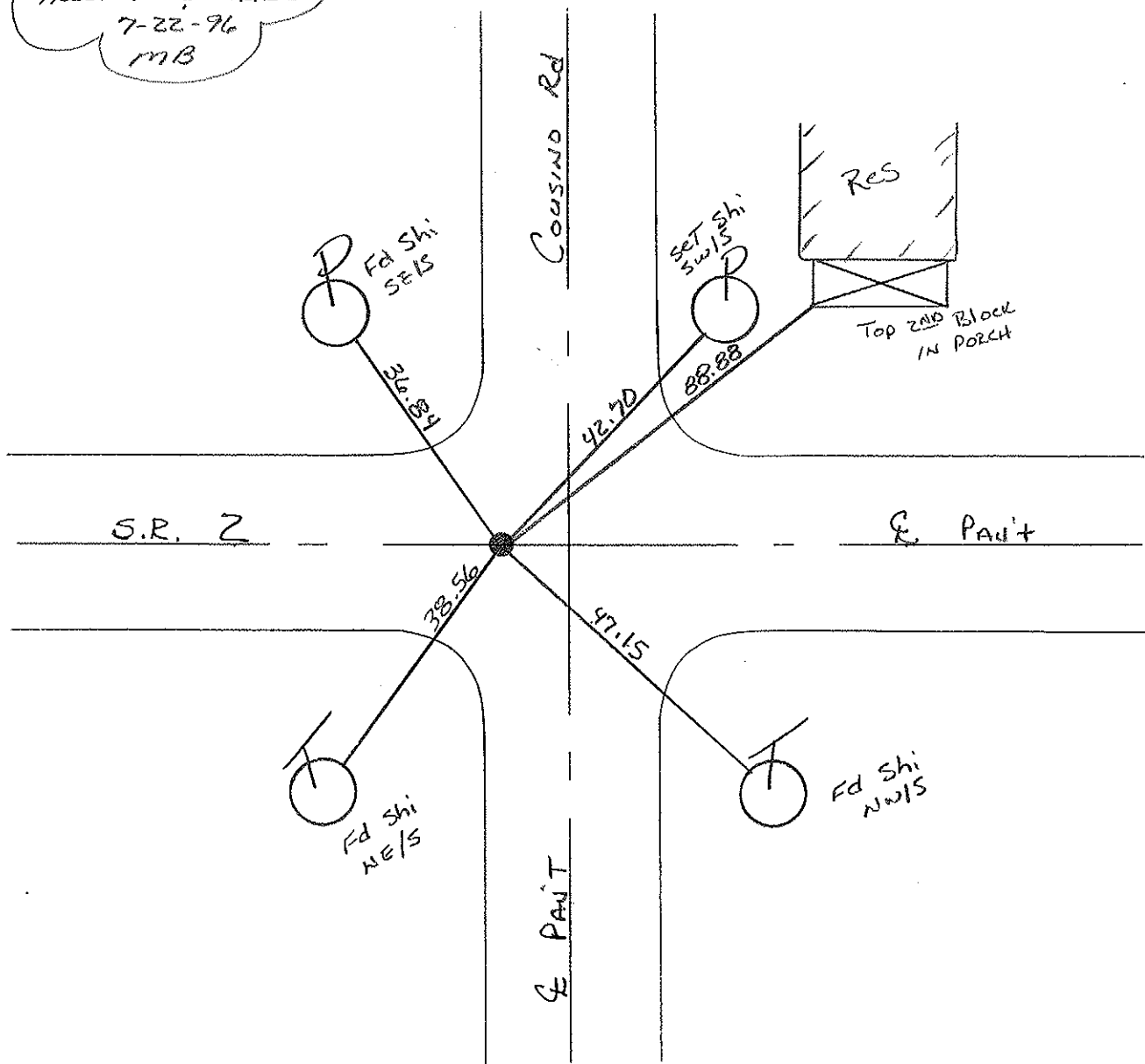
~~EST - E PAV'T. - RIGHT~~ yes

TO - EDGE PAVEMENT 8.1 West of E South

S.L.M. 1509+66



Reset P.K. WASHER
7-22-96
MB



O.D.O.T. DISTRICT 2 SURVEY OFFICE

PERSONNEL

REFERENCE NO. 46

SHEET 14 OF

NOTES 1. Stone

H.C. D. Curtis

DATE 20 June 85

ROUTE S.R.#2

R.C. R. Michalak

WEATHER Sunny

COUNTY Lucas

J. Hauscholder

TEMP. 67°

TOWNSHIP Jerusalem

SECTION 3-4-9-10

T R

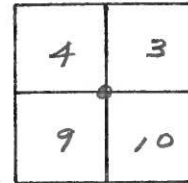
TYPE MONUMENT PK Nail

ON SURFACE - BELOW Surface

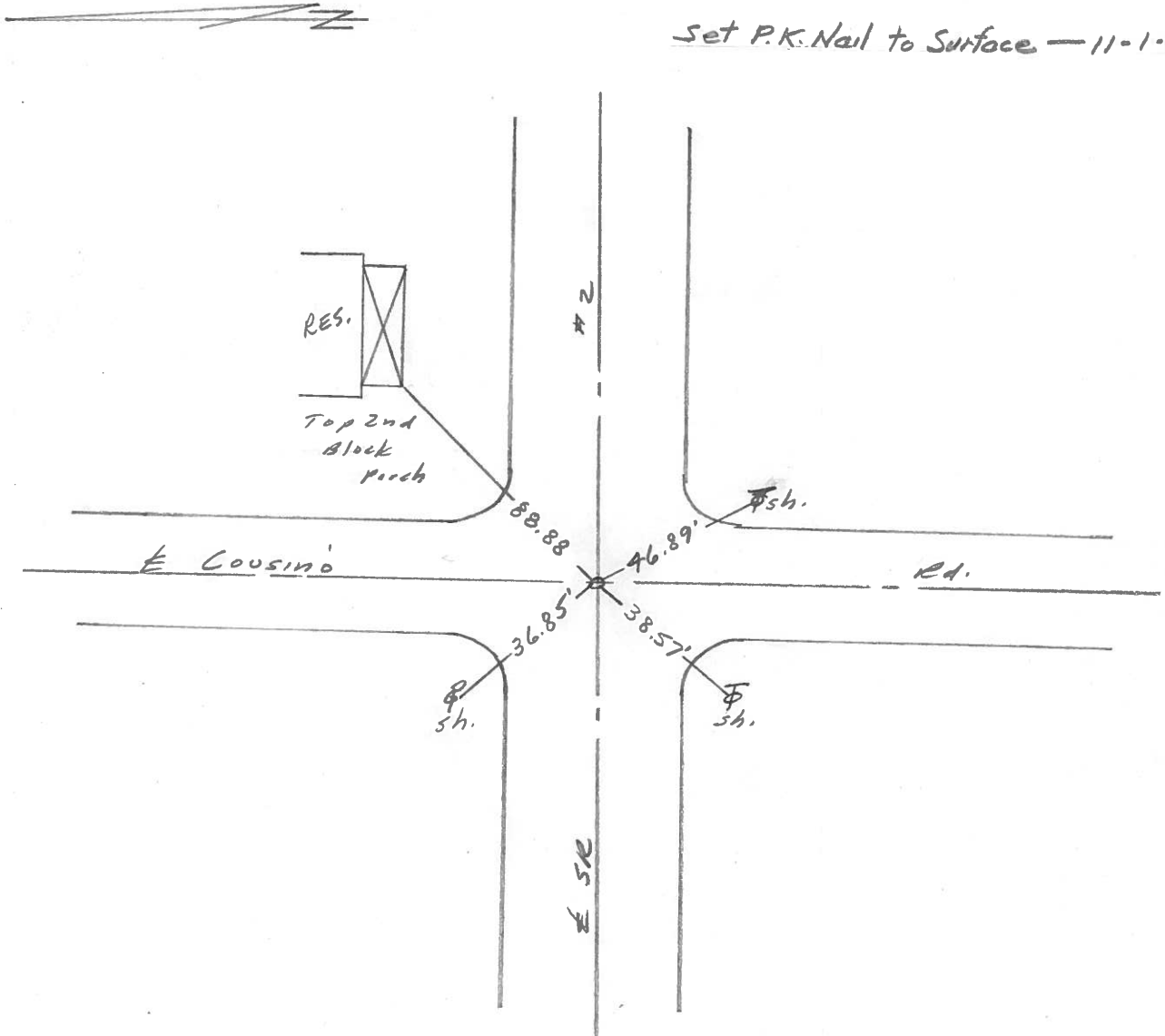
LEFT - <math>\odot</math> PAV'T. - RIGHT

 TO EDGE PAVEMENT

S.L.M. 1509+75

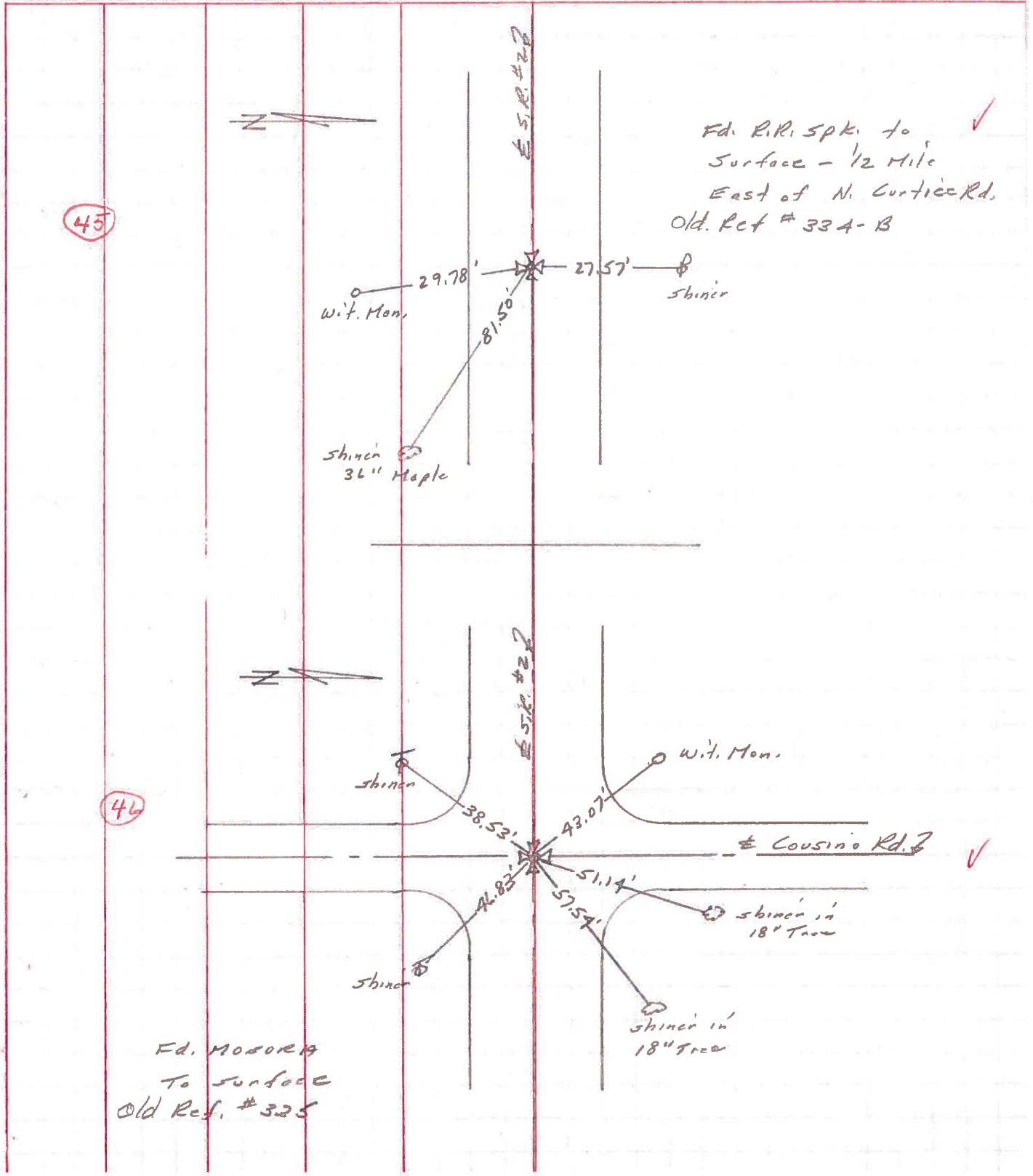


Set P.K. Nail to Surface — 11-1-85



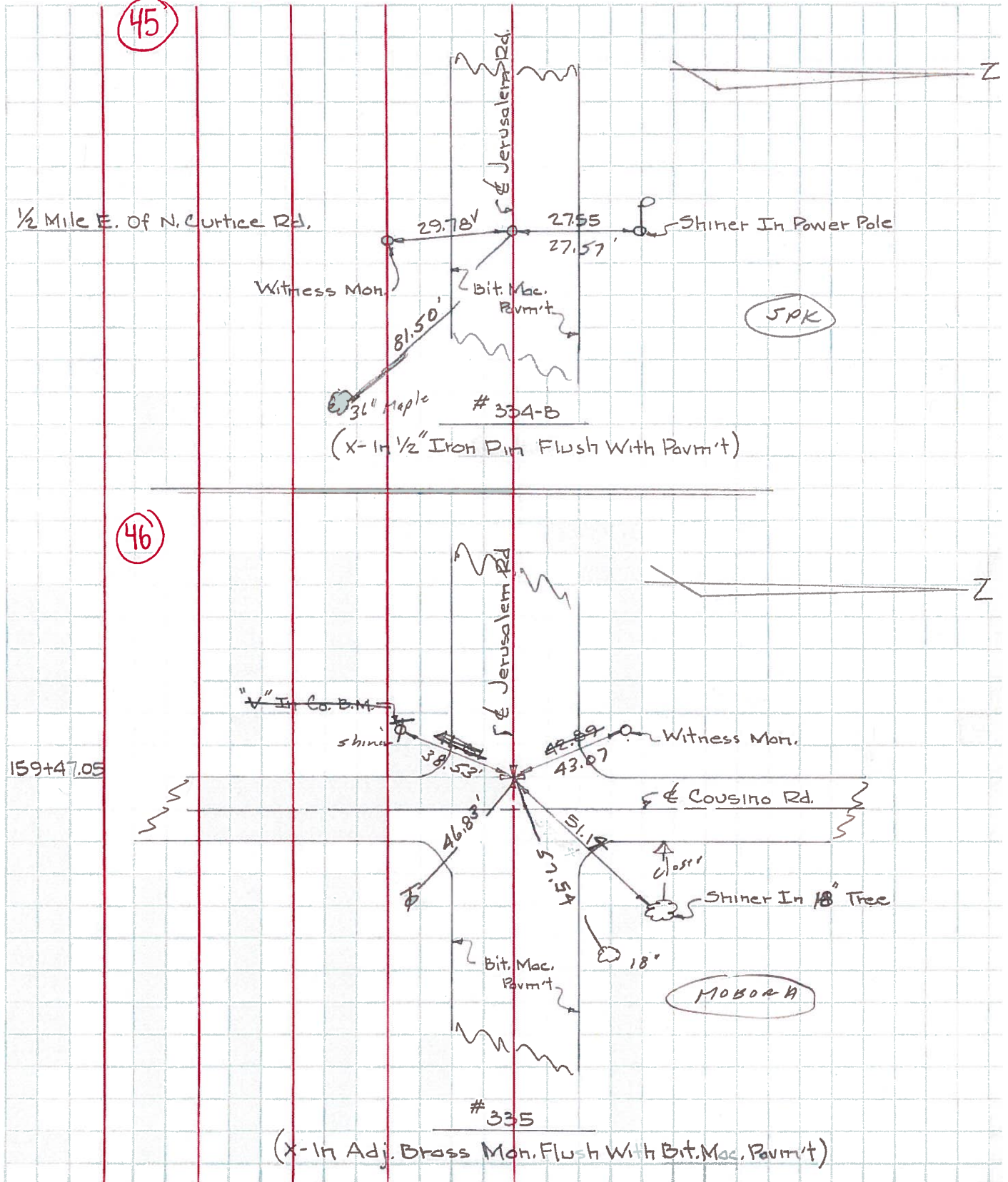
PERSONNEL	TITLE	PERSONNEL	TITLE	COUNTY	DATE
Stone	Notes			Lucas	1 July 71
Michalak	H.C.			S. R. #2	WEATHER Warm
Schnoder	R.C.			SEC. 04, Co. Line West	TEMP. 79°
Farr	FD				

DESCRIPTION References to Control Points JOB NO. _____



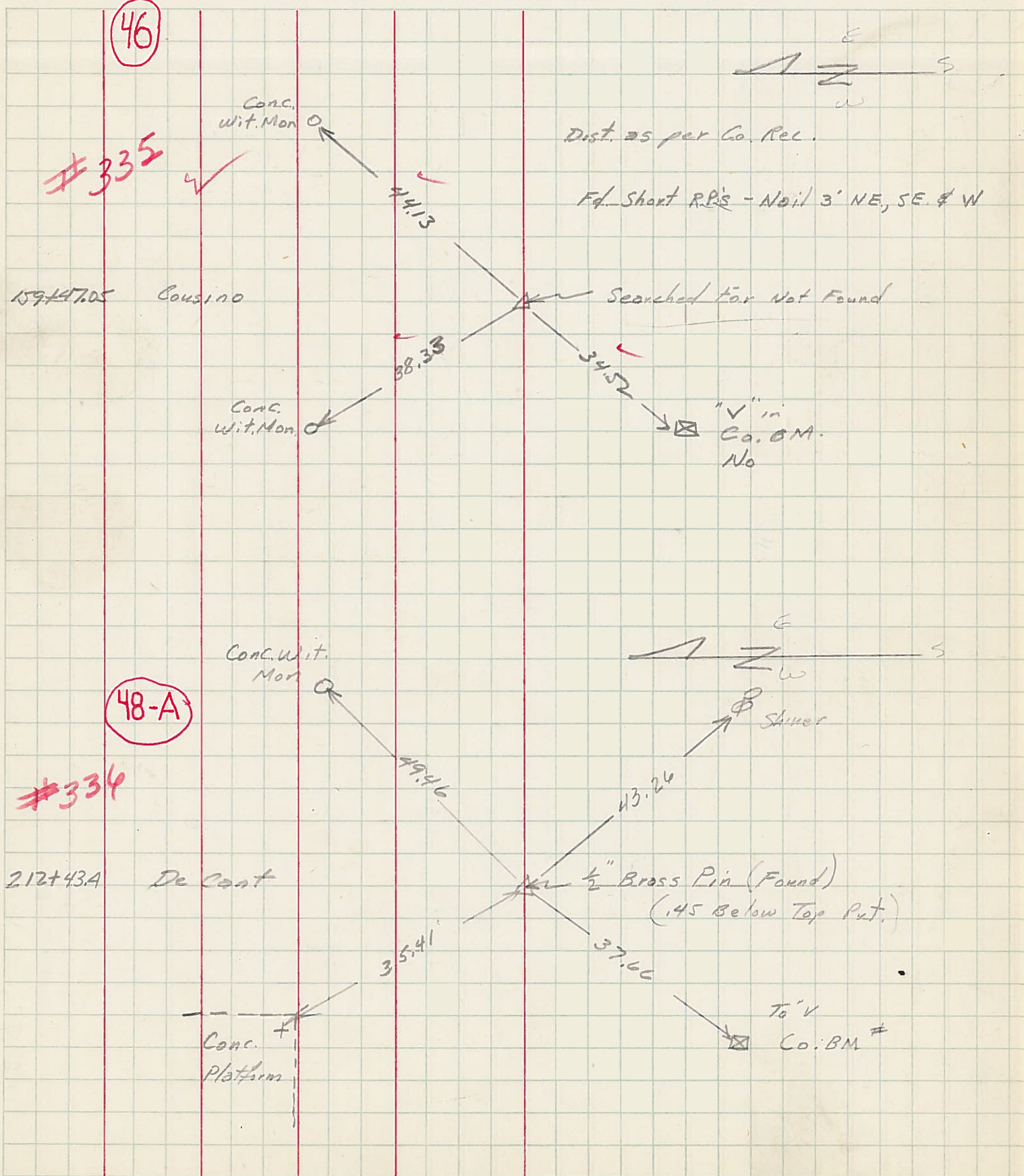
PERSONNEL	TITLE	PERSONNEL	TITLE	COUNTY	DATE	WEATHER	TEMP.
W. Derrin				Lucas	Jan. 27, 1966	SHOW	20
D. Curtis				2			
D. Granata							
F. Omev							

DESCRIPTION Jerusalem Rd. - Ref. Mon. & Control Points JOB NO. _____



PERSONNEL	TITLE	PERSONNEL	TITLE	COUNTY	DATE
Radzinski				Lucas	March 24 1954
Carpenter				S. R. 2	WEATHER
Burdley				SEC.	TEMP.
Chappuis					

DESCRIPTION R.P.'s to Mon. LEFT CENTER LINE RIGHT JOB NO.



PERSONNEL _____ TITLE _____ PERSONNEL _____ TITLE _____
 COUNTY Lucas DATE 3-23-54
 S. R. #2 WEATHER _____
 SEC. _____ TEMP. _____

DESCRIPTION	LEFT	CENTER LINE	RIGHT	JOB NO.
Sta. 79+25.85			N.W. to shiner in P.P. 70.25 N.E. to shiner in 12' apple 57.30 S.E. to shiner in 18' apple 63.95 S.E. to shiner in 28" Elm 30.04'	
	(43) #334			
Sta. 106+25.2 N. Curtice 1/2" iron pin			N.E. to x-in w. end conc. pump ishd 99.7' S.W. to + in N.E. Cor. conc slab Gas Sta. 52.5 N.W. to shiner in P.P. 43.40 S.E. to shiner in E.N.E. Guard rail post 47.2'	
	(44) #334-A			
Sta. 159+47.05 Cousino Rd. Fd short P.P. - Nail 3' N.E, S.E. & W.			N.E. to conc. m.r. 44.13' S.W. to 'V' in Co. B.M. 34.52 N.W. to conc. witness mon. 38.33	
	(46) #335			
Sta. 212+43.14 Decant Rd. 1/2" brass pin - fd.			N.E. to conc. wit. mon. 49.46' S.E. to P.P. - shi 43.26 S.W. to 'V' in Co. B.M. 37.66' N.W. to + in S.E. cor. conc. platform 35.41'	
	(48) #336			
Sta. 265+91.6 Yondota Rd. Fd. brass plate 145 below fault.			N.E. to shiner in T.P. 40.11' S.W. to shiner in P.P. 41.46' N.W. to conc. witness mon. 42.87'	
	(49) #337			