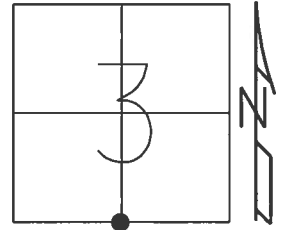


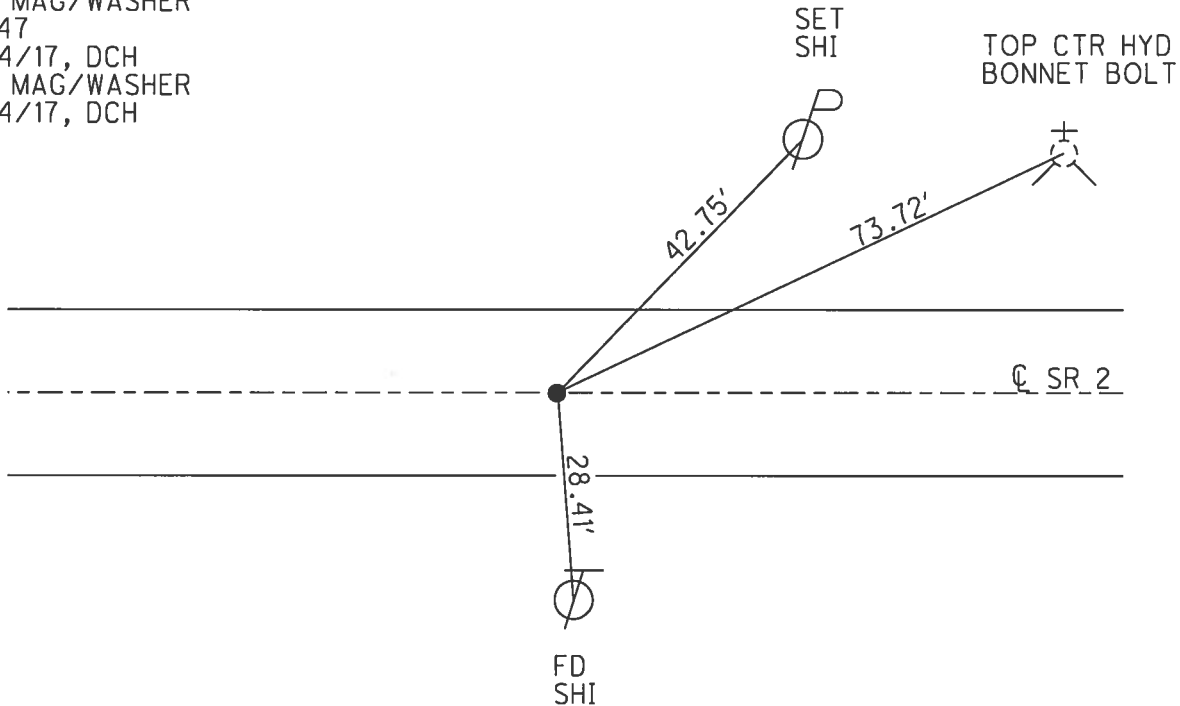
O.D.O.T. DISTRICT 2 SURVEY OFFICE (USE ONLY)

PERSONNEL _____ REFERENCE NO. 47 SHEET 4 OF 20
 NOTES O'DONNELL DATE 3/16/15 ROUTE 2
 H.C. WESTFALL WEATHER CLOUDY COUNTY LUCAS
 R.C. RHOADES TEMP. 57° TOWNSHIP JERUSALEM
 _____ SECTION 3
 _____ T 10 S R 9 E

TYPE MONUMENT P.K./WASHER
 ON SURFACE - ~~BELOW~~ ON _____
 LEFT - ☉ PAV'T - RIGHT ON _____
 - TO - EDGE PAVEMENT
 S.L.M. 1532+18.75
 GRID: NORTHING: 719483.119 EASTING: 1738485.922



RECORD:
 FD P.K.NAIL
 3/28/96, MB
 SET P.K./WASHER
 7/22/96, MB
 FD P.K.NAIL
 SET MAG/WASHER
 REF47
 8/24/17, DCH
 SET MAG/WASHER
 8/24/17, DCH



O.D.O.T. DISTRICT 2 SURVEY OFFICE

PERSONNEL _____

REFERENCE NO. 47

SHEET 3 OF 7

NOTES CORDES

H.C. CORDES

R.C. BARNHISEL

DATE 3-28-96

WEATHER CLOUDY

TEMP. +35°F

ROUTE 2

COUNTY LUCAS

TOWNSHIP JERUSALEM

SECTION 3

T10 S R 9 E

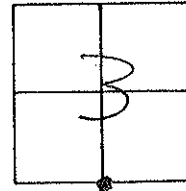
TYPE MONUMENT PK NAIL

ON SURFACE - ~~NO~~ YES

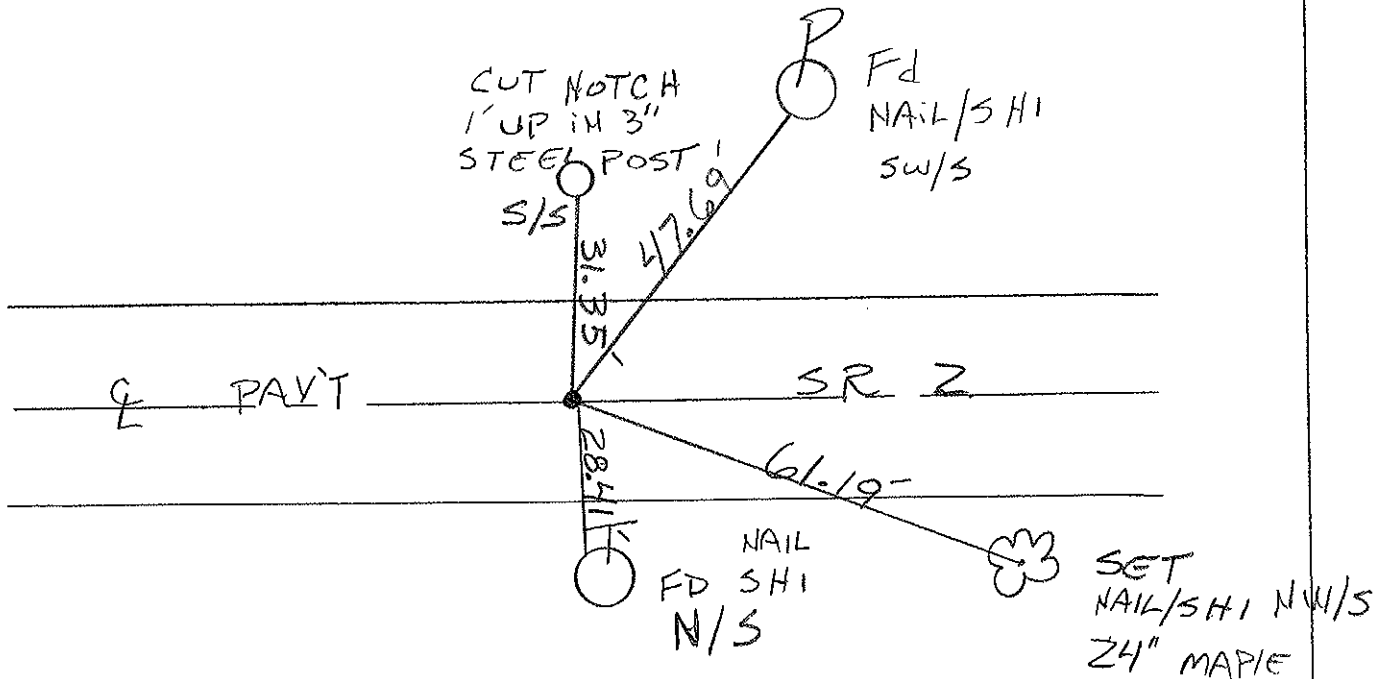
~~PAV'T.~~ YES

12.170 LT EDGE PAVEMENT

S.L.M. 1536 + 21



RESET PK & WASHER
7-22-96
MB



O.D.O.T. DISTRICT 2 SURVEY OFFICE

PERSONNEL

REFERENCE NO. 47

SHEET 15 OF

NOTES 1. Stone

H.C. D. Curtis

R.C. K. Michalek

J. Hauscholder

DATE 20 June 85

WEATHER Sunny

TEMP. 67°

ROUTE S.R. #2

COUNTY Lucas

TOWNSHIP Jerusalem

SECTION 3

T R

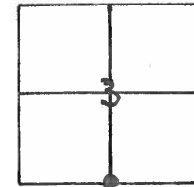
TYPE MONUMENT PK Nail

ON SURFACE - BELOW Surface

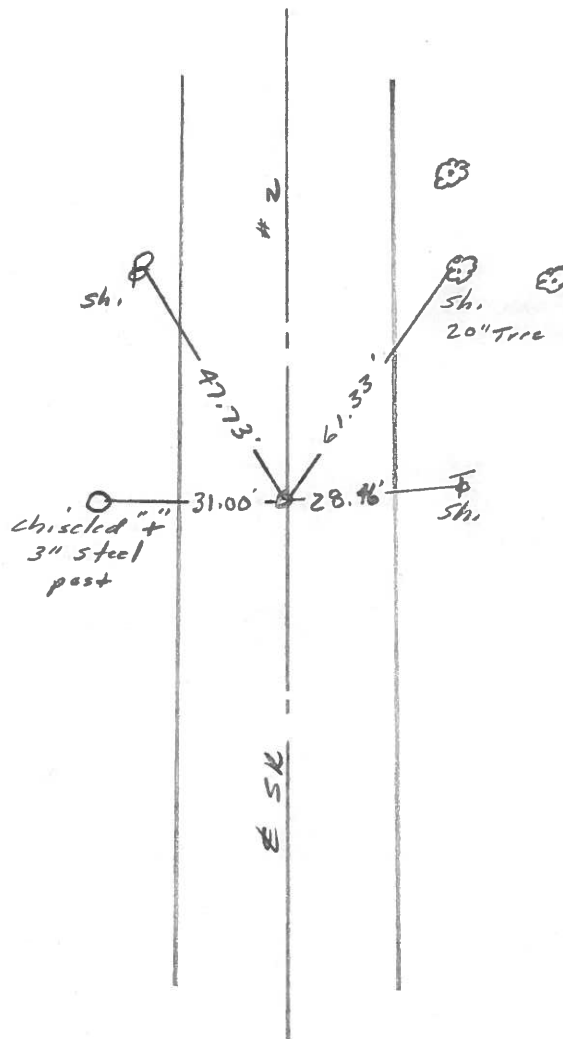
LEFT - & PAV'T. - RIGHT

 TO EDGE PAVEMENT

S.L.M. 1536 + 15

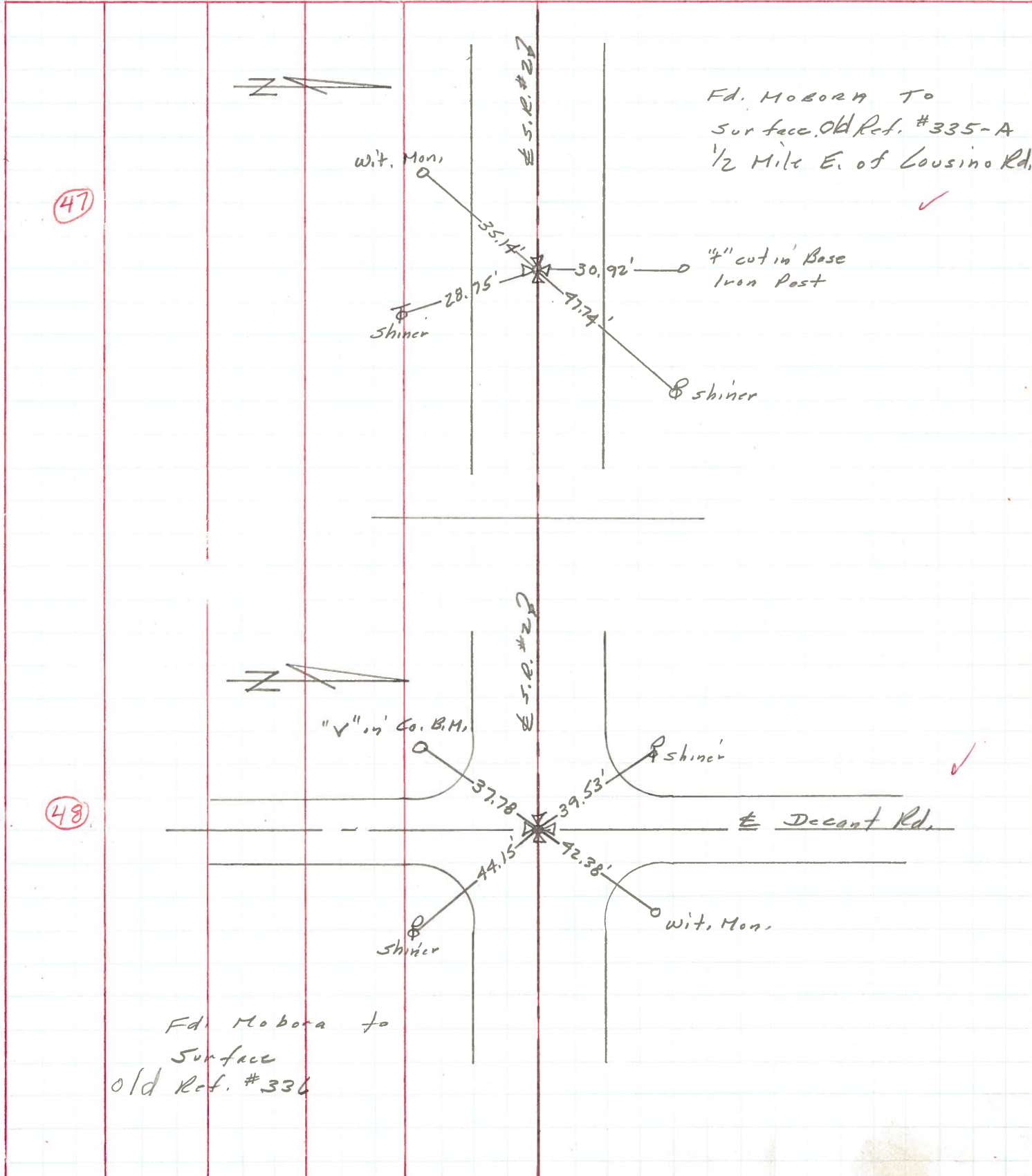


Set P.K. Nail to Surface - 11-1-85



PERSONNEL	TITLE	PERSONNEL	TITLE	COUNTY	DATE
Stone	Notes			Lucas	1 July 71
Michalok	H.C.			S. R. #2	WEATHER Warm
Schrader	FD			SEC. Ottawa Co. line West.	TEMP. 79°
Farr	R.C.				

DESCRIPTION References to Control Points JOB NO. _____

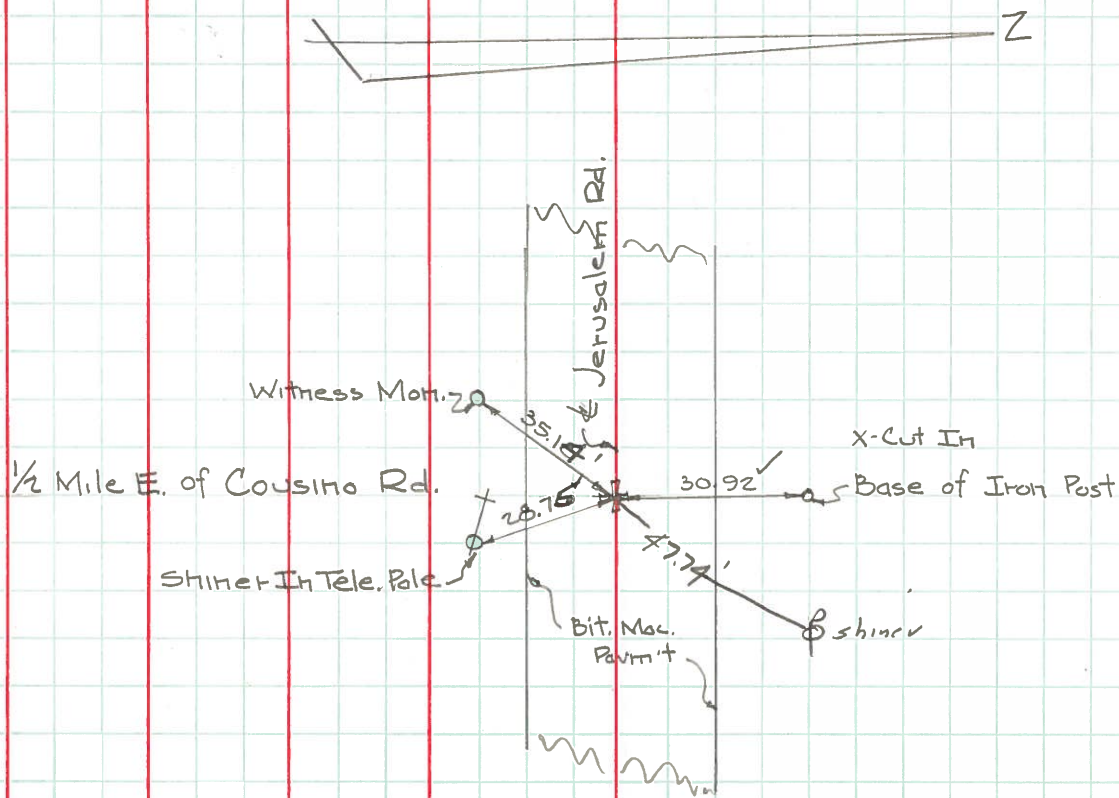


PERSONNEL	TITLE	PERSONNEL	TITLE	COUNTY	Lucas	DATE	Jan. 28, 1966
W. Denno	_____	_____	_____	S. R.	2	WEATHER	Sunny
D. Curtis	_____	_____	_____	SEC.	_____	TEMP.	0°
D. Granata	_____	_____	_____				
F. Omev	_____	_____	_____				

DESCRIPTION Jerusalem Rd. - Ref. Mon. & Control Points JOB NO. _____

LEFT CENTER LINE RIGHT

47



335-A

(X-Cut In Adj. Brass Mon. Flush With Pavm't)

MOSORIA