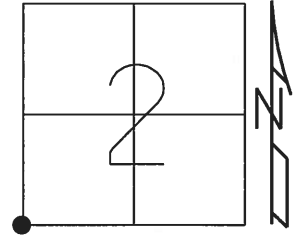


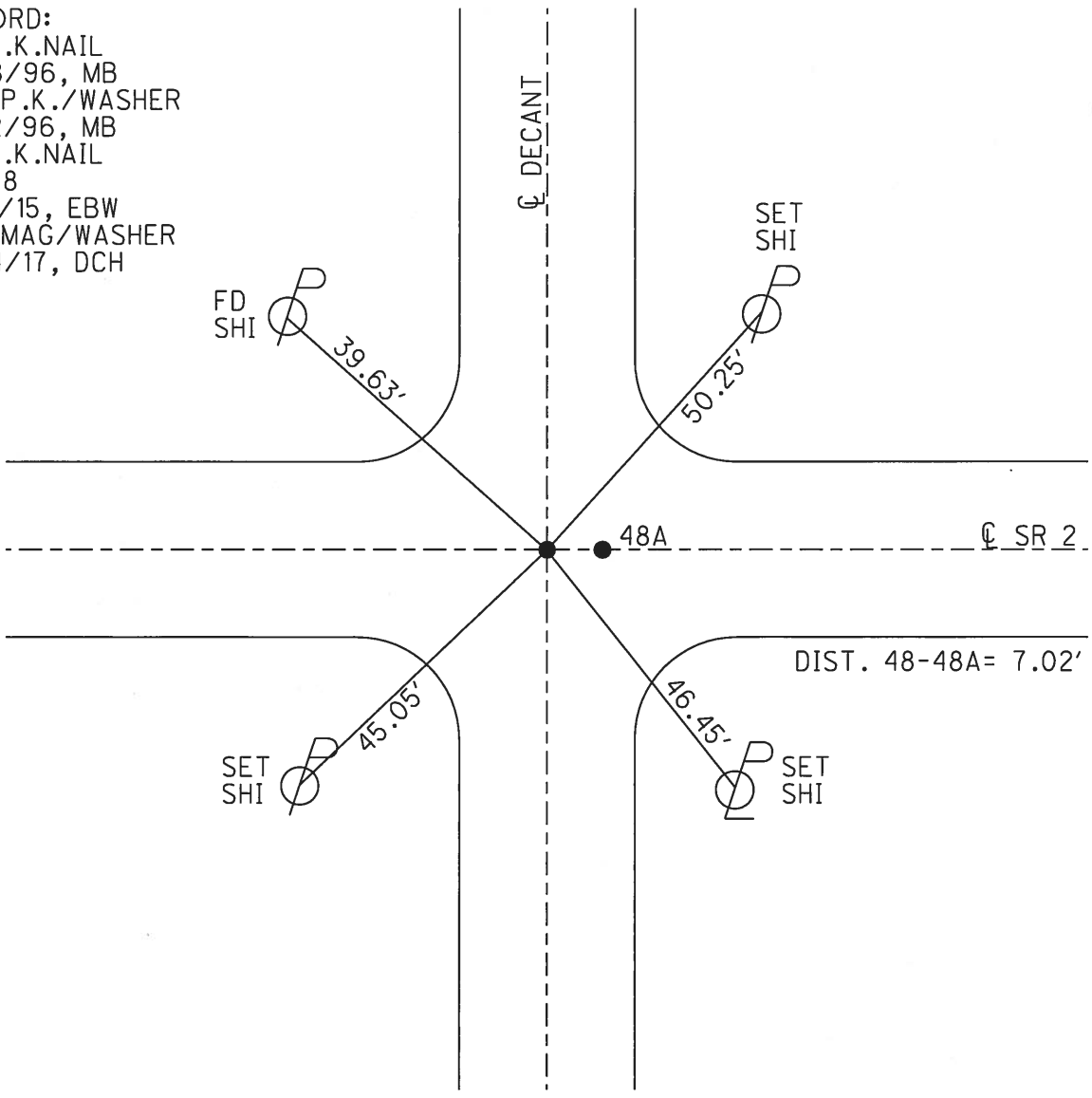
O.D.O.T. DISTRICT 2 SURVEY OFFICE (USE ONLY)

PERSONNEL _____ REFERENCE NO. 48 SHEET 5 OF 20
 NOTES LEU _____ DATE 8/16/16 ROUTE 2
 H.C. HOMAN _____ WEATHER CLOUDY, WIND COUNTY LUCAS
 R.C. RHOADES _____ TEMP. 76° TOWNSHIP JERUSALEM
 _____ SECTION 2
 _____ T 10 S R 9 E

TYPE MONUMENT P.K.NAIL
 ON SURFACE - ~~BELOW~~ ON _____
 LEFT - ☉ PAV'T - RIGHT ON _____
 _____ TO _____ EDGE PAVEMENT
 S.L.M. 1558+67.24
 GRID: NORTHING: 719485.306 EASTING: 1741134.413



RECORD:
 FD P.K.NAIL
 3/28/96, MB
 SET P.K./WASHER
 7/22/96, MB
 FD P.K.NAIL
 REF48
 3/16/15, EBW
 SET MAG/WASHER
 8/24/17, DCH



O.D.O.T. DISTRICT 2 SURVEY OFFICE

PERSONNEL _____

REFERENCE NO. 48

SHEET 4 OF 7

NOTES BARRIAGE RC

H.C. CORDES

DATE 3-28-96

ROUTE 2

R.C. _____

WEATHER cloudy

COUNTY LUCAS

TEMP. +30° F

TOWNSHIP Jerusalem

SECTION 3

T10 S R 9 E

TYPE MONUMENT PK^v NAIL

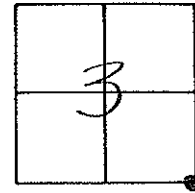
ON SURFACE - ~~BELOW~~ yes

~~LEFT - E~~ PAV'T. - ~~RIGHT~~ yes

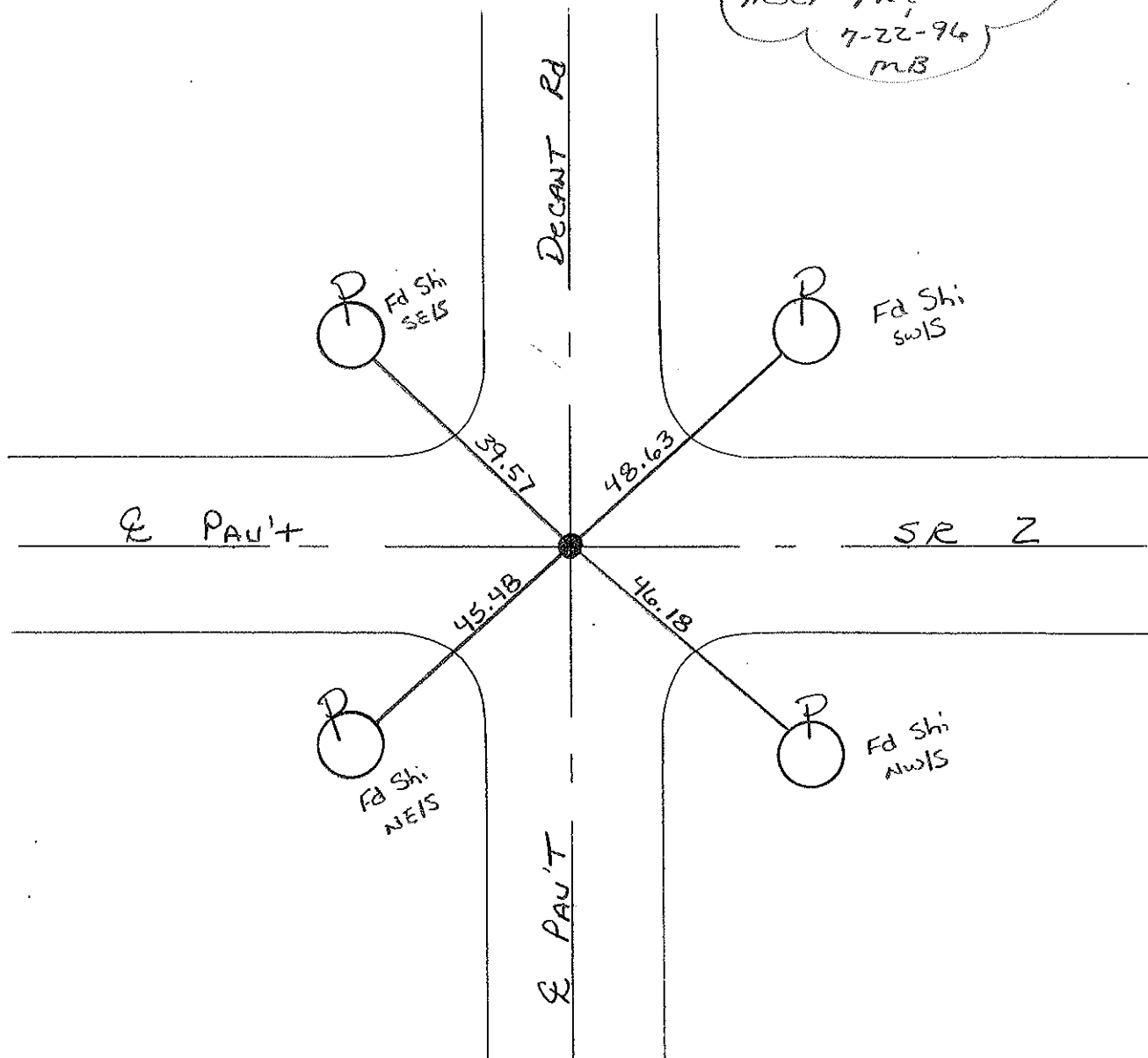
— TO — EDGE PAVEMENT

on E PAV'T South

S.L.M. 1562+76



RESET PK & WASHER
 7-22-96
 M.B.



O.D.O.T. DISTRICT 2 SURVEY OFFICE

PERSONNEL

REFERENCE NO. 78

SHEET 16 OF

NOTES 1. Stone

H.C. D. Curtis

R.C. R. Michalak

J. Householder

DATE 20 June 85

WEATHER Sunny

TEMP. 67°

ROUTE S.R.#2

COUNTY Lucas

TOWNSHIP Jerusalem

SECTION 2-3-10-11

T R

TYPE MONUMENT PK Nail

ON SURFACE - BELOW Surface

LEFT - \odot PAV'T. - RIGHT

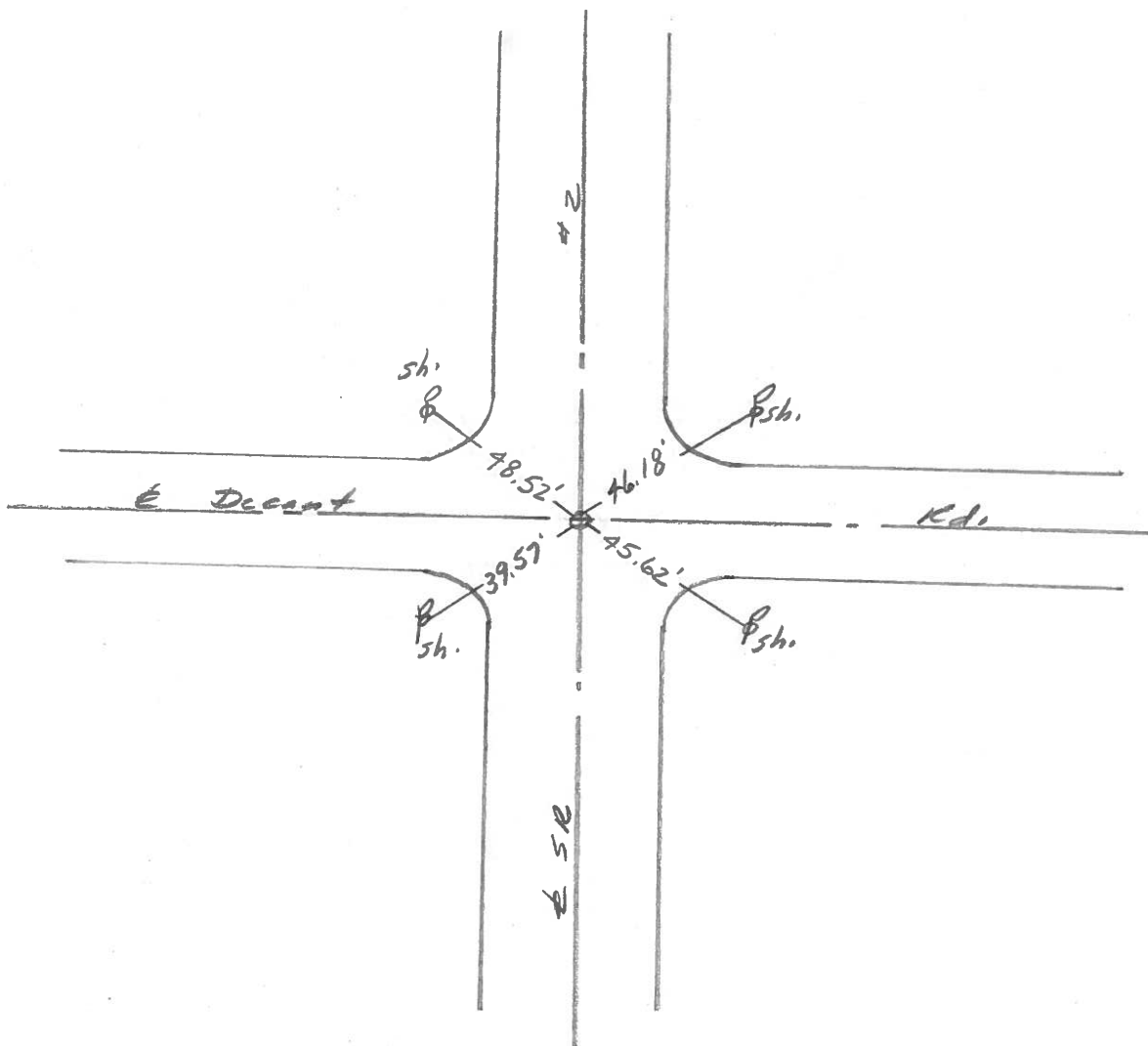
 TO EDGE PAVEMENT

S.L.M.

3	2
10	11



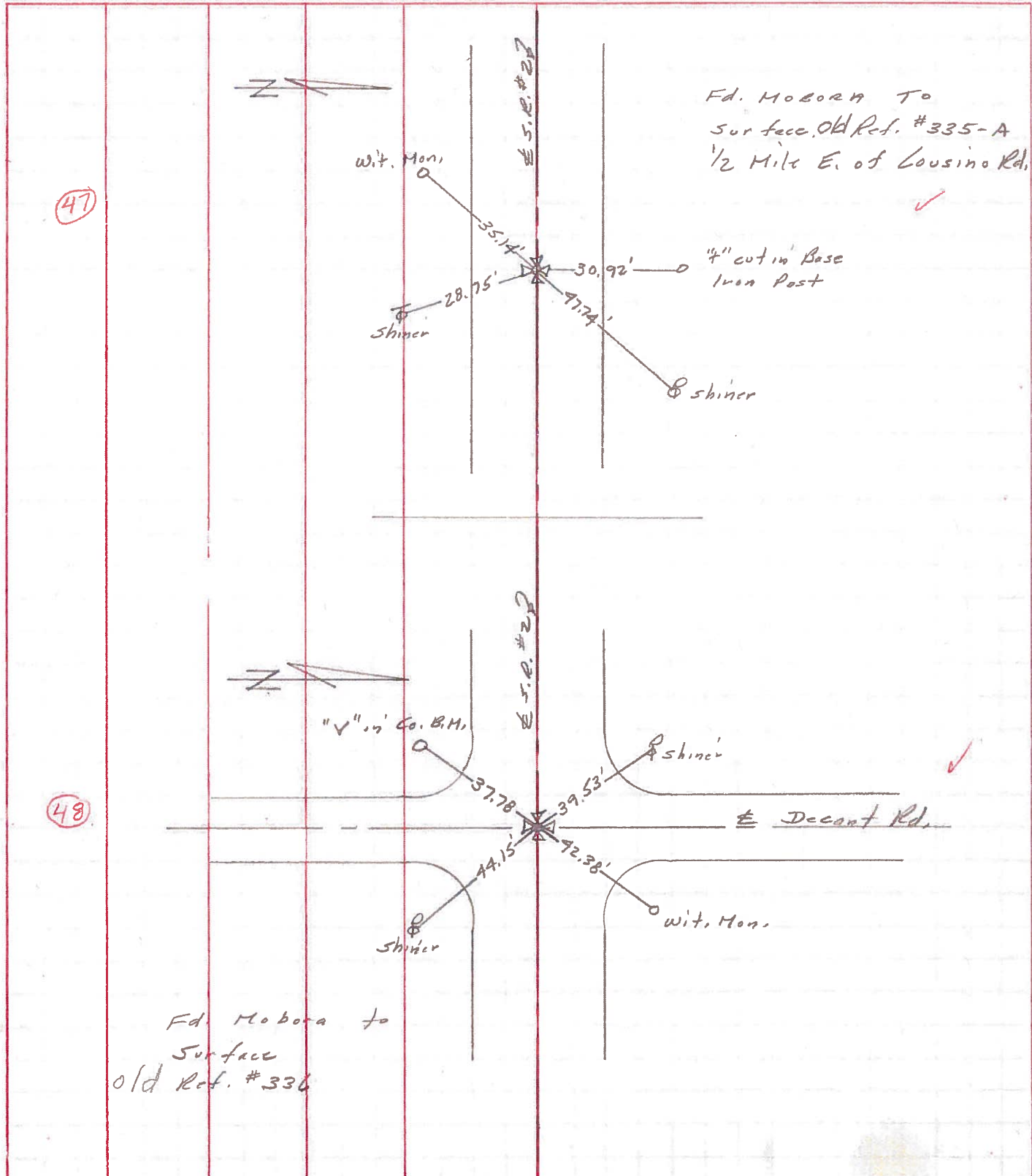
Fd. P.K. Nail to Surface - 11-1-85



PERSONNEL	TITLE	PERSONNEL	TITLE	COUNTY	DATE
Stone	Notes			Lucas	1 July 71
Michalak	H.C.			S. R. #2	WEATHER Warm
Schrader	FB			SEC. Ottawa Co. line West.	TEMP. 79°
Farr	R.C.				

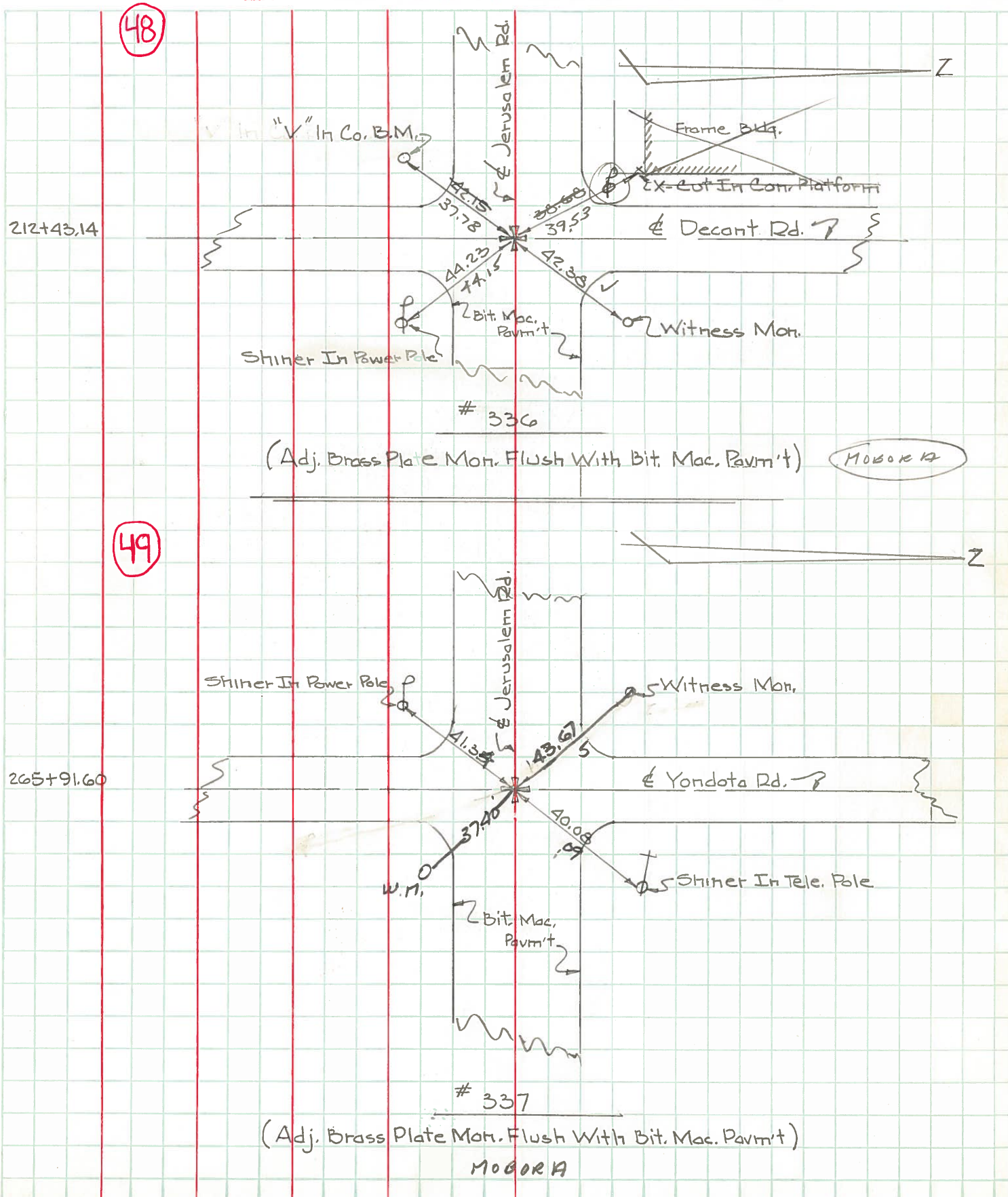
DESCRIPTION References to Control Points JOB NO. _____

LEFT CENTER LINE RIGHT



PERSONNEL	TITLE	PERSONNEL	TITLE	COUNTY	DATE
W. Derrico				Lucas	Jan. 26, 1966
D. Curtis				S. R. 2	WEATHER Sunny
D. Granata				SEC.	TEMP. 16°
F. Oney					

DESCRIPTION Jerusalem Rd. - Ref. Mon. & Control Points JOB NO. _____



PERSONNEL	TITLE	PERSONNEL	TITLE	COUNTY <u>Lucas</u>	DATE <u>3-23-54</u>
				S. R. <u>#2</u>	WEATHER
				SEC.	TEMP.

DESCRIPTION	LEFT	CENTER LINE	RIGHT	JOB NO.
-------------	------	-------------	-------	---------

Sta. 79+75.85	(43) #334		N.W. to shiner in P.P. 70.25 N.E. to shiner in 12" apple 57.30 S.E. to shiner in 18" apple 63.95 S.E. to shiner in 28" Elm 30.04	
Sta. 106+25.2 N. Pur tice 1/2" iron pin	(44) #334-A		N.E. to x-in w. end conc. pump island 99.7' S.W. to + in N.E. Cor. conc slab Gas Sta. 58.5 N.W. to shiner in P.P. 43.40 S.E. to shiner in E.N.E. Guard rail post 47.2:	
Sta. 159+47.05 Cousino Rd. Ed short P.P.'s - Nail 3' N.E., S.E. & W.	(46) #335		N.E. to conc. mt. r. 44.13 S.W. to 'V' in Co. B.M. 34.52 N.W. to Conc. witness mon. 38.33	
Sta. 212+43.14 Decant Ed. 1/2" brass pin - fd.	(48) #336		N.E. to conc. wit. mon. 49.46' S.E. to P.P. - shi 43.26 S.W. to 'V' in Co. B.M. 37.66' N.W. to + in S.E. cor. conc. platform 35.41'	
Sta. 265+91.6 Yon data Ed. Ed. brass plate 1.45 below fault.	(49) #337		N.E. to shiner in T.P. 40.11 S.W. to shiner in P.P. 41.46' N.W. to Conc. witness mon. 42.87	