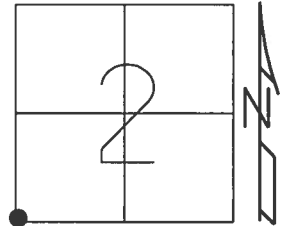


O.D.O.T. DISTRICT 2 SURVEY OFFICE (USE ONLY)

PERSONNEL \_\_\_\_\_ REFERENCE NO. 48 A SHEET 6 OF 20  
 NOTES O'DONNELL DATE 3/16/15 ROUTE 2  
 H.C. WESTFALL WEATHER CLOUDY COUNTY LUCAS  
 R.C. RHOADES TEMP. 57° TOWNSHIP JERUSALEM  
 \_\_\_\_\_ SECTION 2  
 \_\_\_\_\_ T 10 S R 9 E

TYPE MONUMENT MAG NAIL  
 ON SURFACE - ~~BELOW~~ ON \_\_\_\_\_  
 LEFT - ☉ PAV'T - RIGHT ON  
 \_\_\_\_\_ TO \_\_\_\_\_ EDGE PAVEMENT  
 S.L.M. 1558+74.25

GRID: NORTHING: 719485.281 EASTING: 1741141.428



RECORD:  
 FD MAG NAIL  
 REFA48  
 3/16/15, EBW  
 DID NOT RESET  
 UNKNOWN ORIGIN  
 8/24/17, DCH

