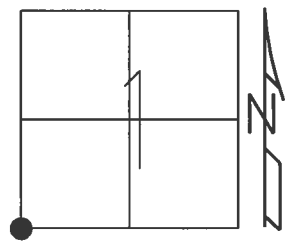


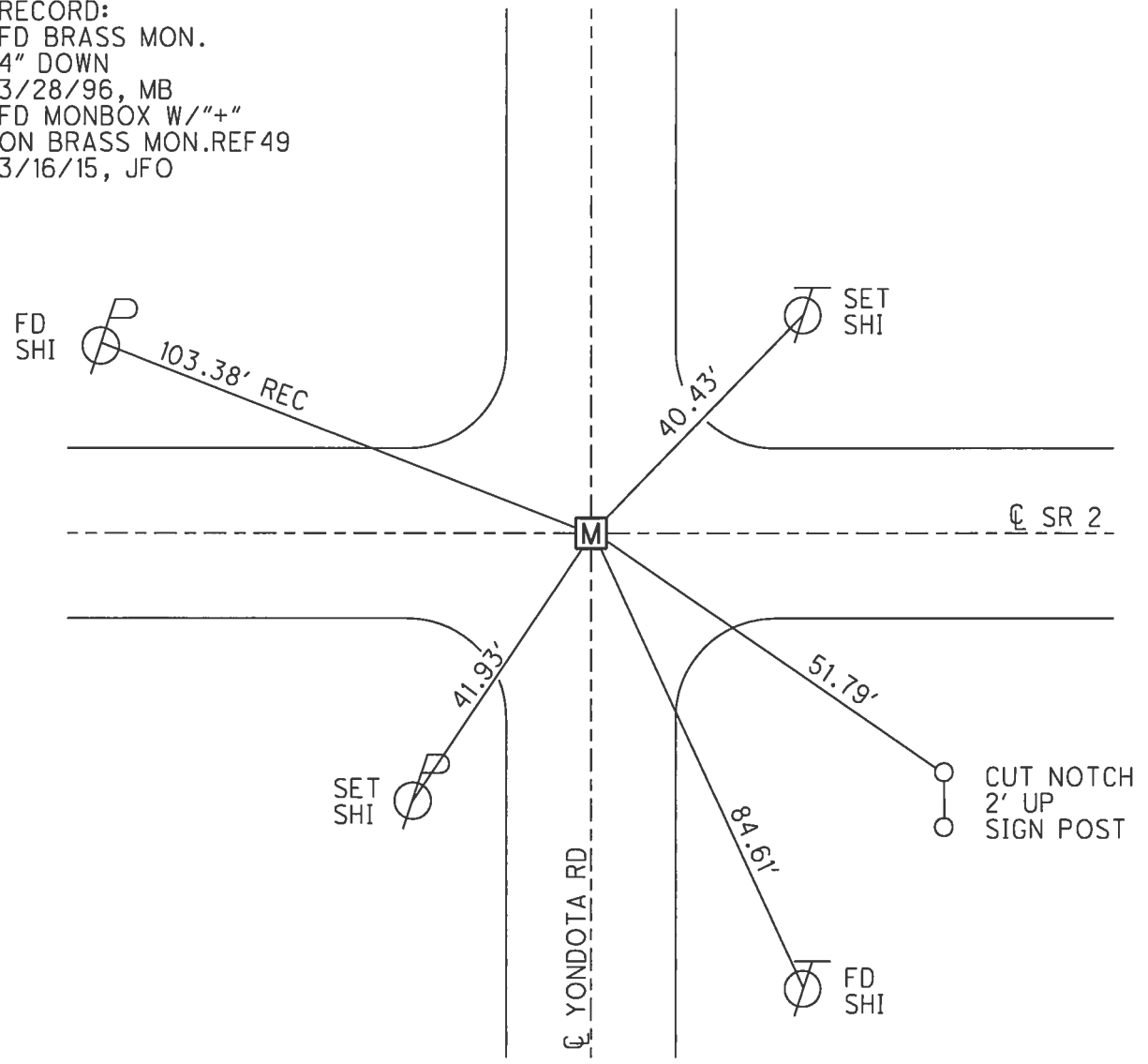
O.D.O.T. DISTRICT 2 SURVEY OFFICE (USE ONLY)

PERSONNEL _____ REFERENCE NO. 49 SHEET 8 OF 20
 NOTES BARNHISEL DATE 3/28/96 ROUTE 2
 H.C. CORDES WEATHER CLOUDY COUNTY LUCAS
 R.C. BARNHISEL TEMP. 35° TOWNSHIP JERUSALEM
 SECTION 1
 T 10 S R 9 E

TYPE MONUMENT BRASS MON.
~~ON SURFACE~~ - BELOW 4"
 LEFT - ☉ PAV'T - RIGHT ON
TO EDGE PAVEMENT
 S.L.M. 1612+15.88
 GRID: NORTHING: 719484.711 EASTING: 1746483.055



RECORD:
 FD BRASS MON.
 4" DOWN
 3/28/96, MB
 FD MONBOX W/"+"
 ON BRASS MON. REF 49
 3/16/15, JFO



O.D.O.T. DISTRICT 2 SURVEY OFFICE

PERSONNEL _____

REFERENCE NO. 49

SHEET 6 OF 7

NOTES BARNHISEL RC

H.C. CORDES

DATE 3-28-96

ROUTE 2

R.C. _____

WEATHER Cloudy

COUNTY LUCAS

TEMP. +35° F

TOWNSHIP Jerusalem

SECTION 2

T10 S R 9 E

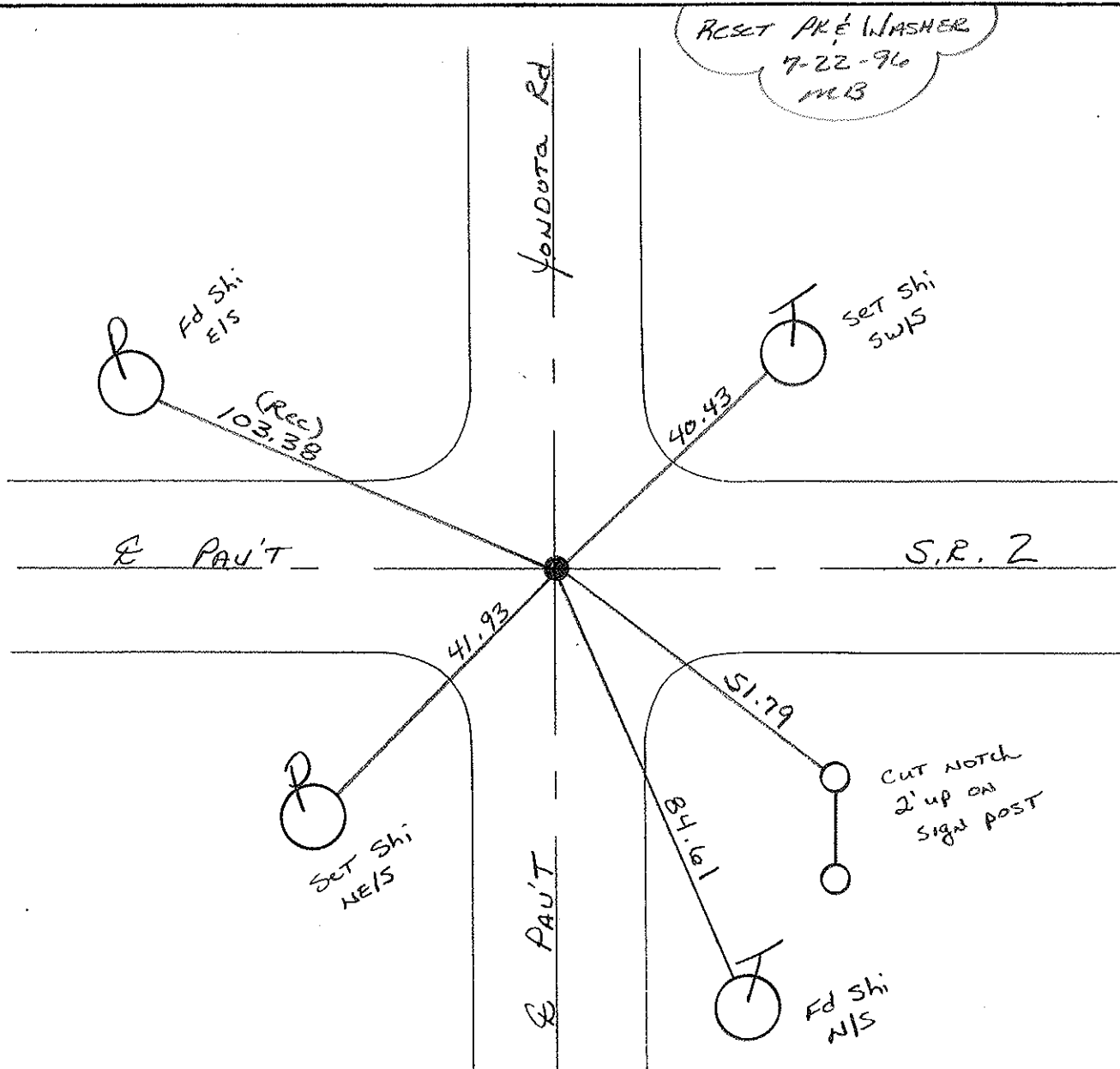
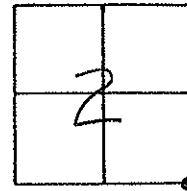
TYPE MONUMENT BRASS' mon.

~~ON~~ SURFACE - BELOW 4"

~~LEFT - & PAV'T. - RIGHT~~ yes

~~- TO -~~ EDGE PAVEMENT ON E PAV'T SOUTH

S.L.M. 16/6 + 38



O.D.O.T. DISTRICT 2 SURVEY OFFICE

PERSONNEL

REFERENCE NO. 49

SHEET 18 OF

NOTES 1. Stone

H.C. D. Curtis

R.C. R. Michalek

J. Hausholder

DATE 20 June 85

WEATHER Sunny

TEMP. 67°

ROUTE 5.R#2

COUNTY Lucas

TOWNSHIP Jerusalem

SECTION 1-2-11-12

T R

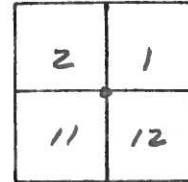
TYPE MONUMENT PK Nail

ON SURFACE - BELOW Surface

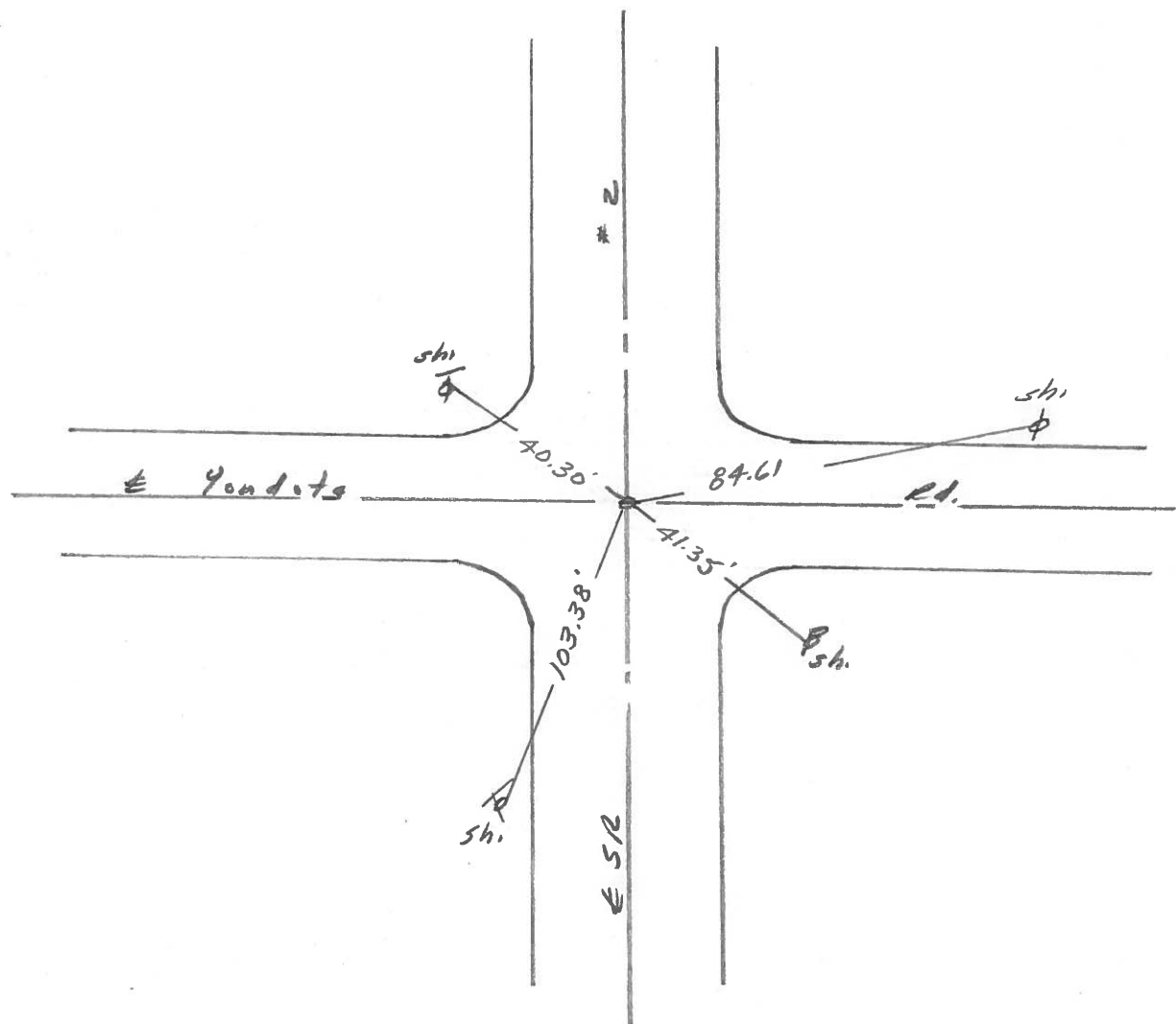
LEFT - \odot PAV'T. - RIGHT

 TO EDGE PAVEMENT

S.L.M. 1616+15

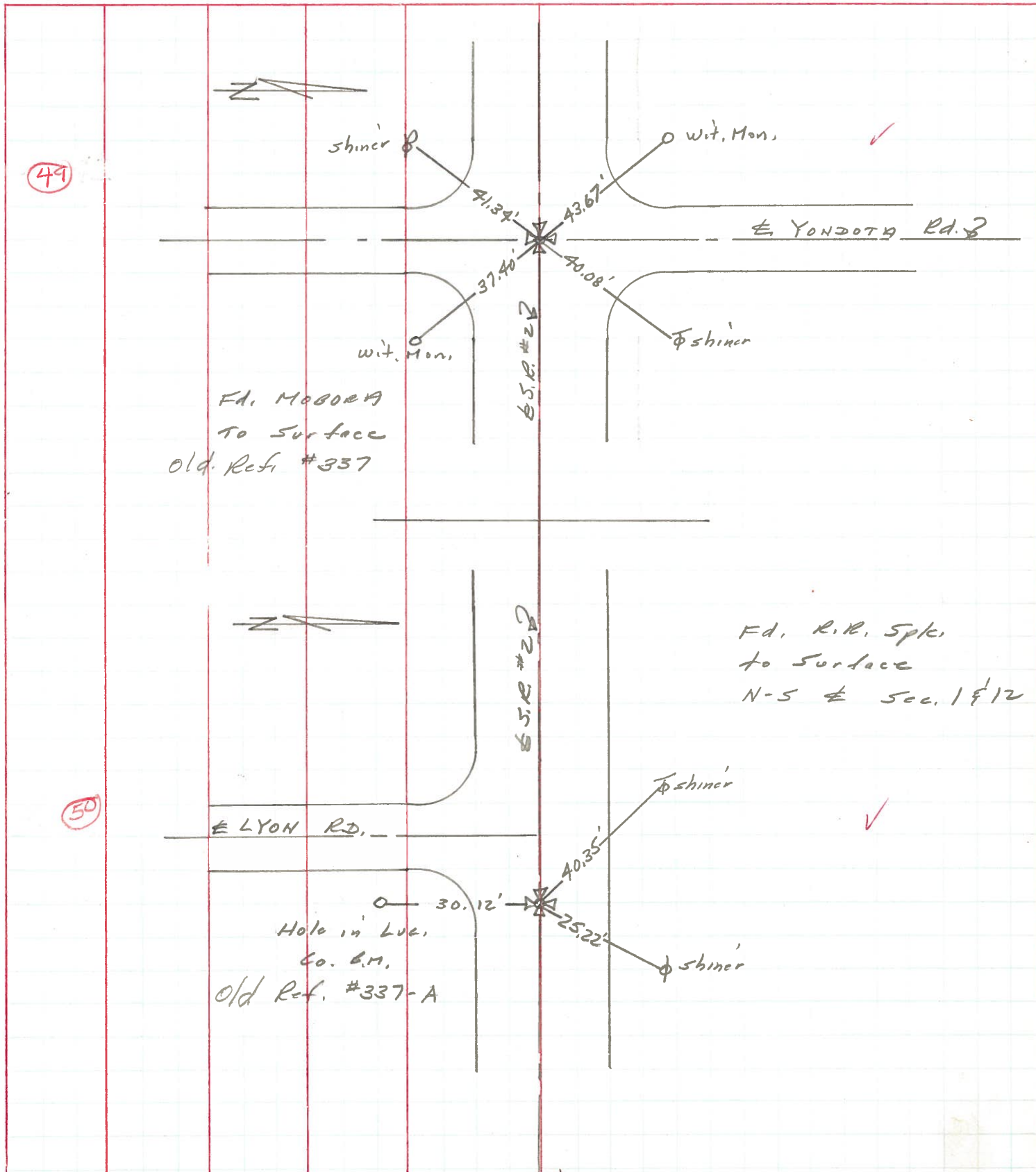


Fd. P.K. Nail to Surface - 11-1-85



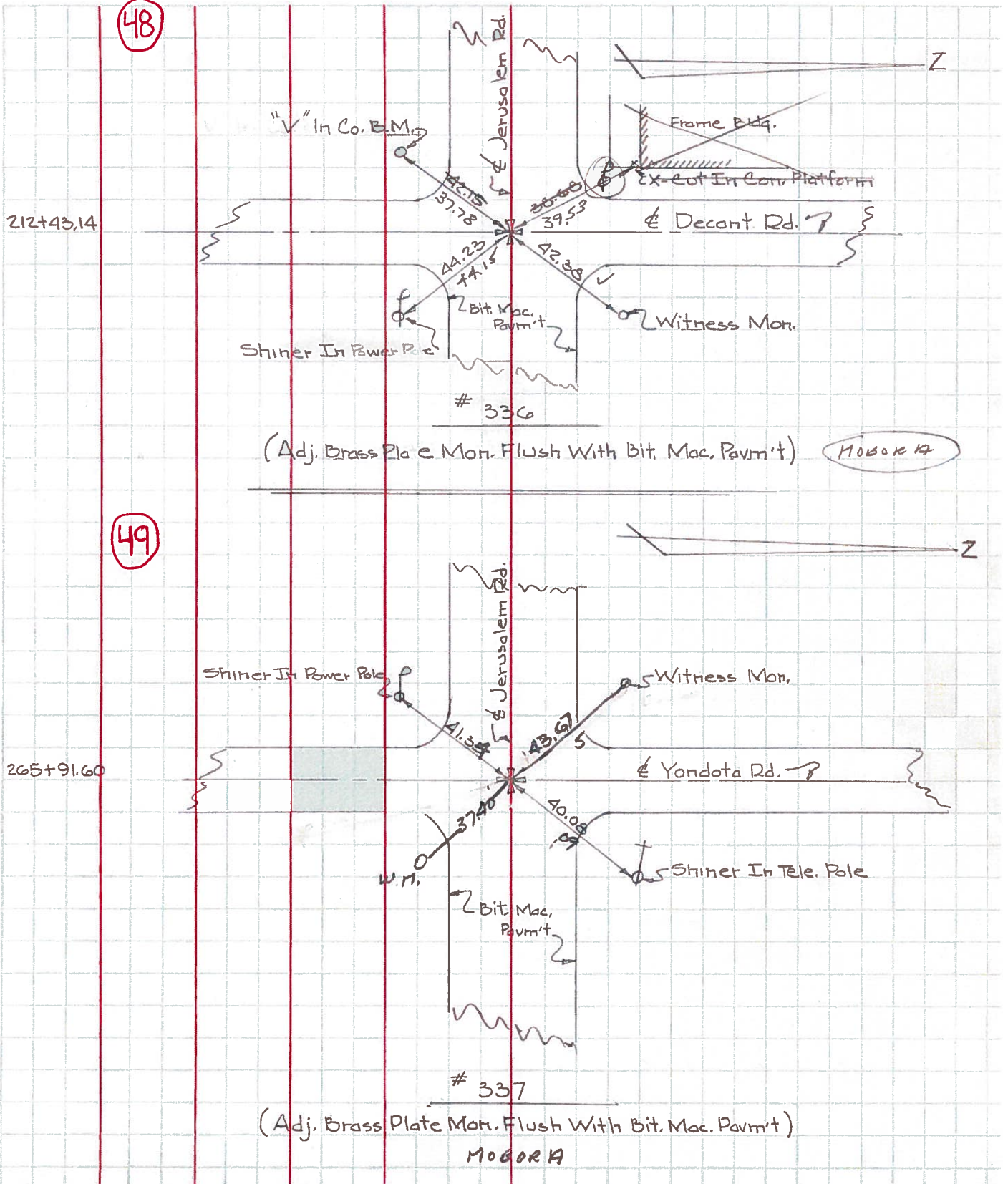
PERSONNEL	TITLE	PERSONNEL	TITLE	COUNTY	DATE	WEATHER	TEMP.
Stone	Notes			Lucas	1 July 71	Warm	79°
Michelak	H.C.			S. R. #2			
Schroder	PI			SEC. Ottawa Co. Line West			
Farr	R.C.						

DESCRIPTION References to Control Points JOB NO. _____

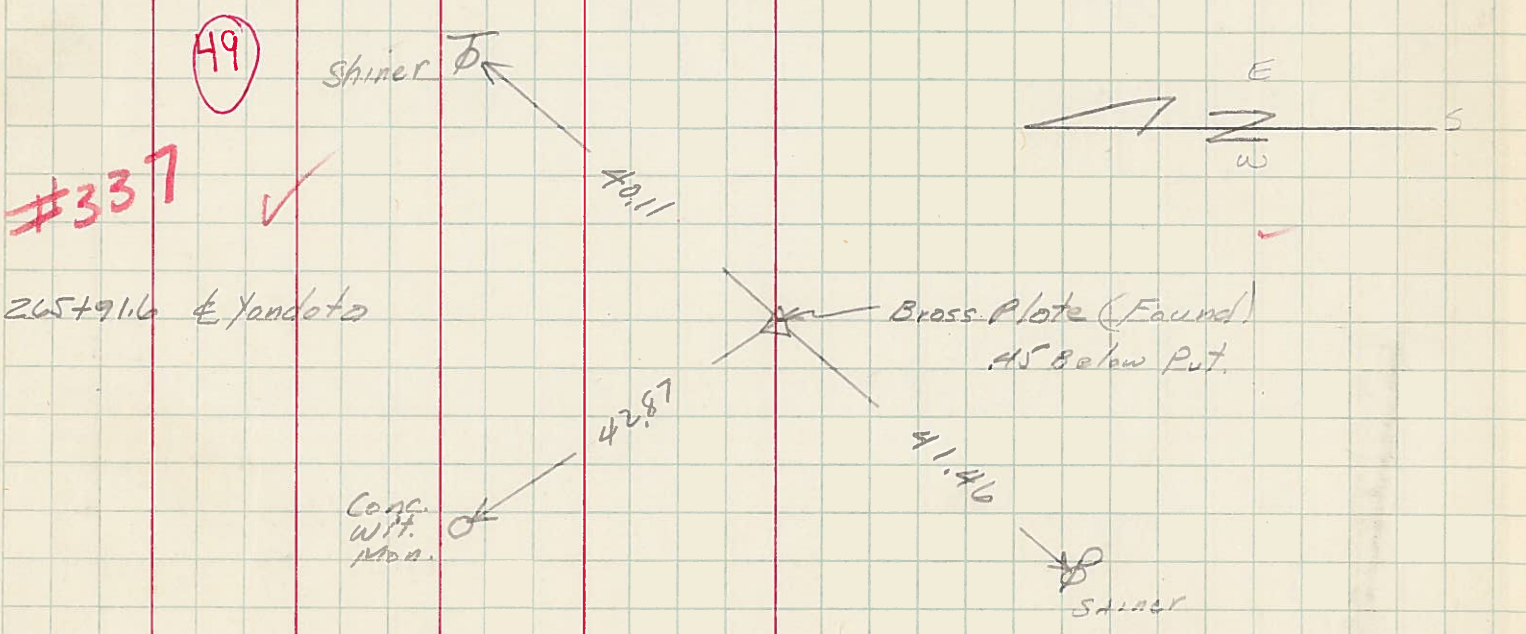
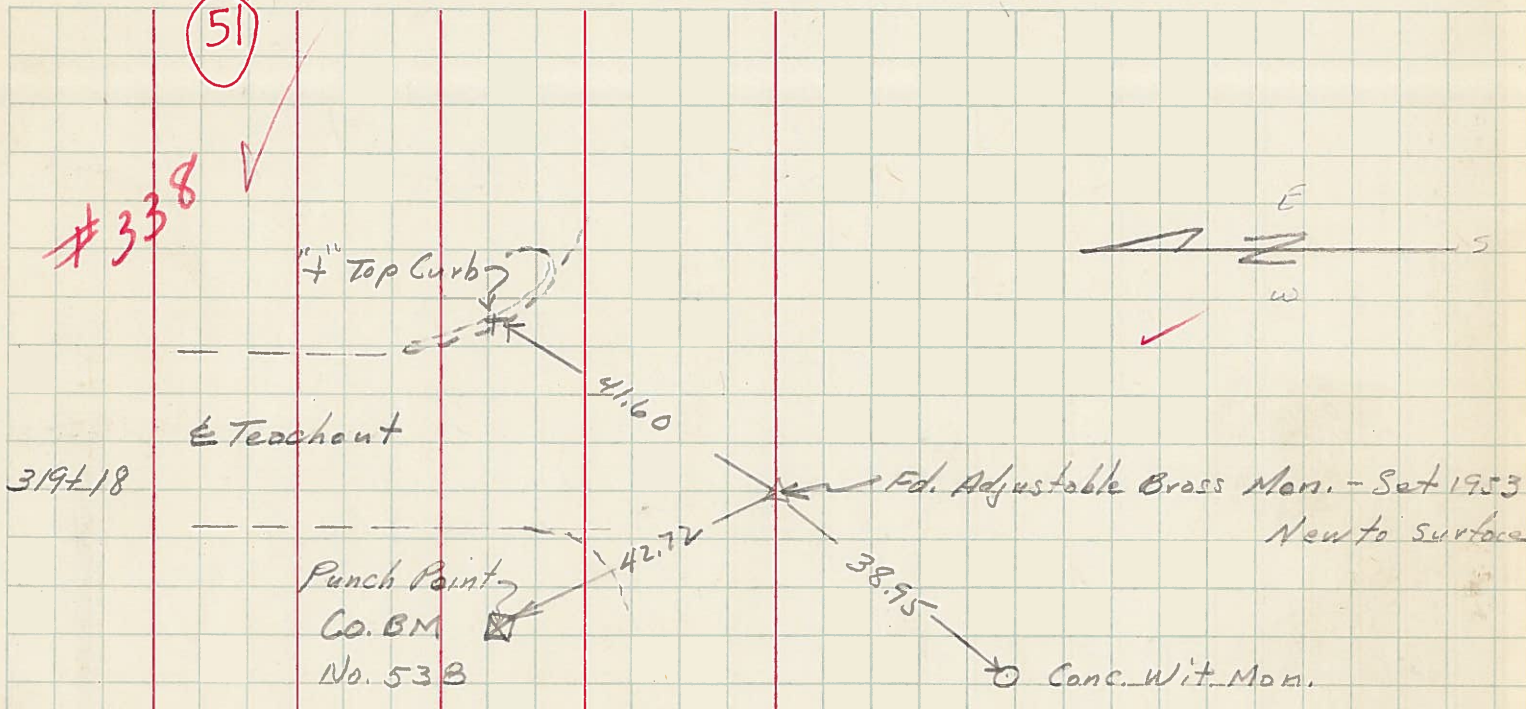


PERSONNEL	TITLE	PERSONNEL	TITLE	COUNTY	Lucas	DATE	Jan. 24, 1966
W. Demko				S. R.	2	WEATHER	Sunny
D. Curtis				SEC.		TEMP.	16°
D. Granata							
F. Orney							

DESCRIPTION Jerusalem Rd. - Ref. Mon. & Control Points JOB NO. _____



PERSONNEL	TITLE	PERSONNEL	TITLE	COUNTY	DATE
Radzimoski				Lucas	March 24 '54
Carpenter				S. R. R.	WEATHER
Shane				SEC.	TEMP.
Burdley					
Chappell					
DESCRIPTION	R.P.'s to Mon.				JOB NO.
	LEFT	CENTER LINE	RIGHT		



PERSONNEL TITLE PERSONNEL TITLE COUNTY Lucas DATE 3-23-54
 S. R. #2 WEATHER
 SEC. TEMP.

DESCRIPTION	LEFT	CENTER LINE	RIGHT	JOB NO.
Sta. 79+75.85			N.W. to shiner in P.P. 70.25 N.E. to shiner in 12" apple 57.30 S.E. to shiner in 18" apple 63.95 S.E. to shiner in 28" Elm 30.04'	
	(43) #334			
Sta. 106+25.2 N. Curtice 1/2" iron pin			N.E. to x-in w. end conc. pump island 99.7' S.W. to + in N.E. Cor. conc slab Gas Sta. 58.6 N.W. to shiner in P.P. 43.40 S.E. to shiner in E.N.E. Guard rail post 47.2'	
	(44) #334-A			
Sta. 159+47.05 Cousino Rd. Fd short P.P. - Nail 3' N.E, S.E. & W.			N.E. to conc. in r. 44.13' S.W. to 'V' in Co. B.M. 34.52 N.W. to conc. witness man. 38.33	
	(46) #335			
Sta. 212+43.14 Decant Rd. 1/2" brass pin - fd.			N.E. to conc. wit. man. 49.46' S.E. to P.P. - shi. 43.26 S.W. to 'V' in Co. B.M. 37.66' N.W. to + in S.E. cor. conc. platform 35.41'	
	(48) #336			
Sta. 265+91.6 Yondata Rd. Fd. brass plate 1.45 below fault.			N.E. to shiner in T.P. 40.11' S.W. to shiner in P.P. 41.46' N.W. to conc. witness man. 42.87	
	(49) #337			