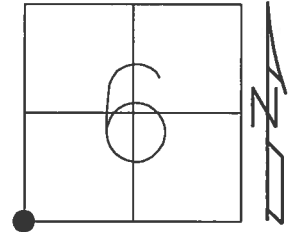


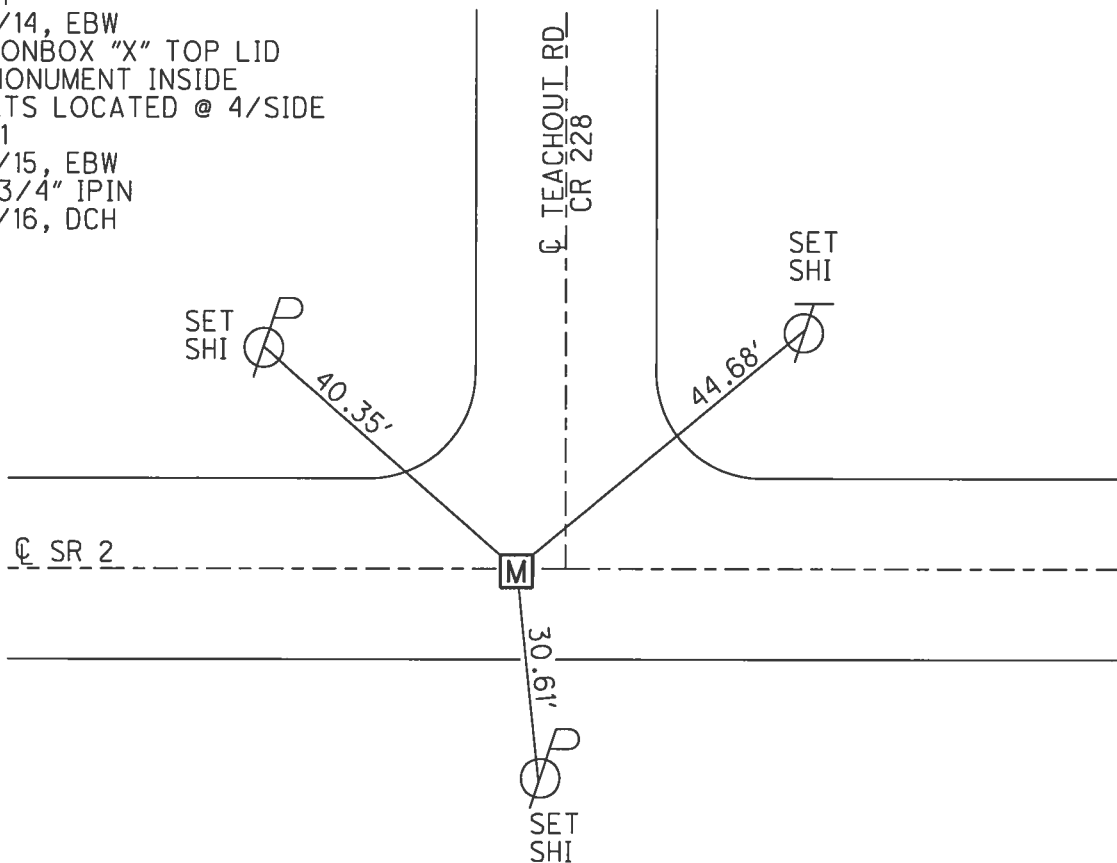
O.D.O.T. DISTRICT 2 SURVEY OFFICE (USE ONLY)

PERSONNEL	REFERENCE NO.	51	SHEET	10	OF	20
NOTES	CRONIN	DATE	11/22/82	ROUTE	2	
H.C.	RIPPLE	WEATHER	SUNNY	COUNTY	LUCAS	
R.C.	GEYMAN	TEMP.	50°	TOWNSHIP	JERUSALEM	
	MOSSER			SECTION	6	
	BARBOUR			T	10	S
				R	10	E

TYPE MONUMENT P.K.NAIL
 ON SURFACE - ~~BELOW~~ ON
 LEFT - ☉ PAV'T - RIGHT -
- TO - EDGE PAVEMENT
 S.L.M. 1665+42.06
 GRID: NORTHING: 719502.126 EASTING: 1751809.087



RECORD:
 FD P.K.NAIL
 11/22/82, CRONIN
 FD MONBOX
 REF51
 12/9/14, EBW
 FD MONBOX "X" TOP LID
 NO MONUMENT INSIDE
 STRATS LOCATED @ 4/SIDE
 REF51
 3/17/15, EBW
 SET 3/4" IPIN
 8/17/16, DCH



ODOT. DISTRICT 2 SURVEY OFFICE

Sht. ___ of ___

County Lucas

Date 11/22/82

Township JERUSALEM

Weather sunny

Section 7

Temp. 50°

T_N, R_E

Personnel Cronin

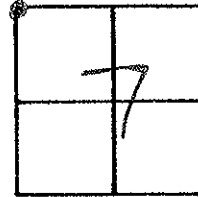
Rippl

Geyman

Mosser

Barbour

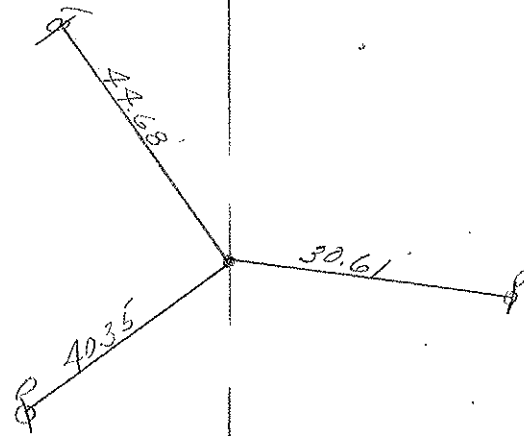
51



SLM = 31.53



Teachout Road
PK on top

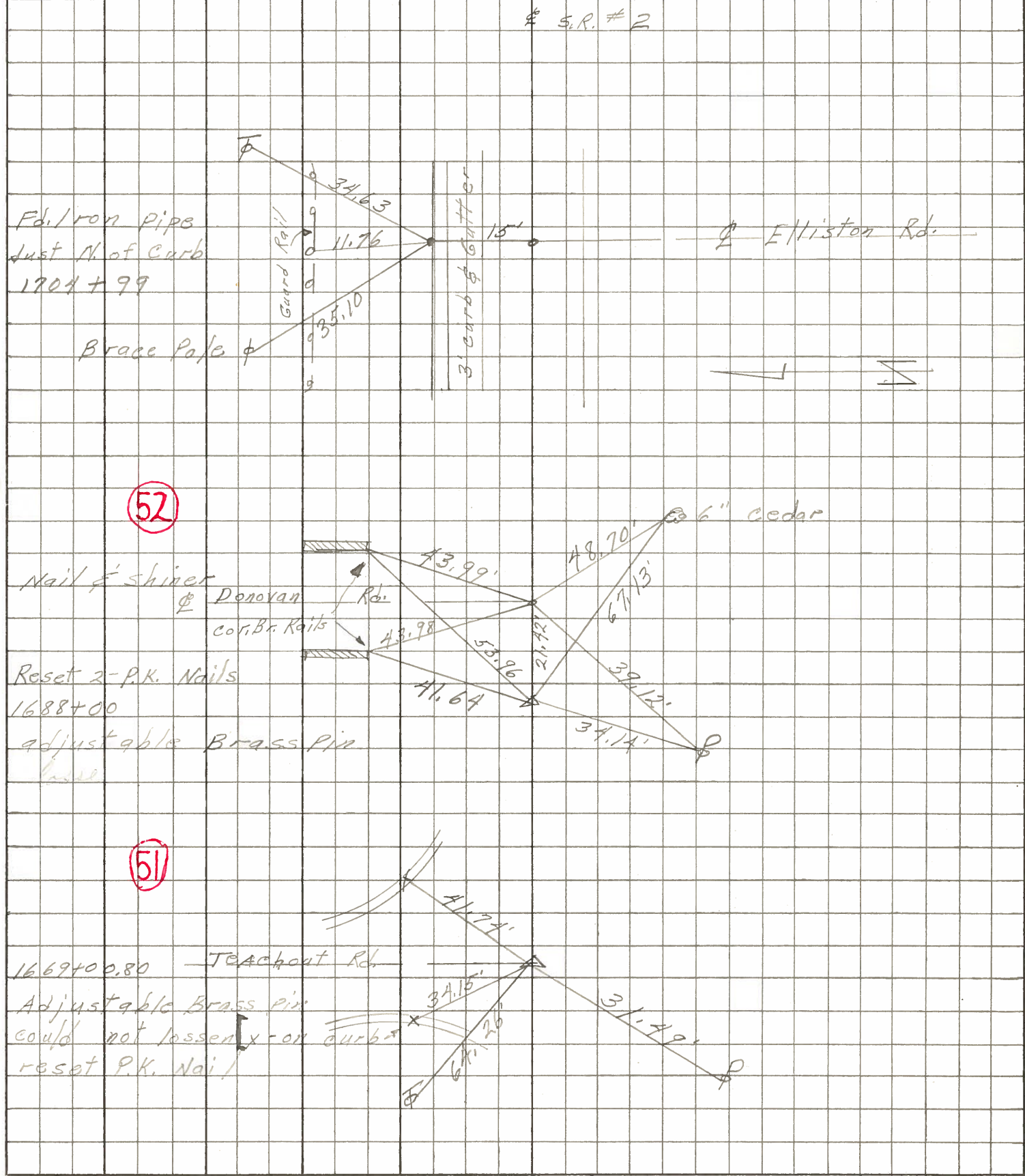


252 # 227

PERSONNEL	TITLE	PERSONNEL	TITLE
Schneider			
Mosser			
Redding			
Potts			

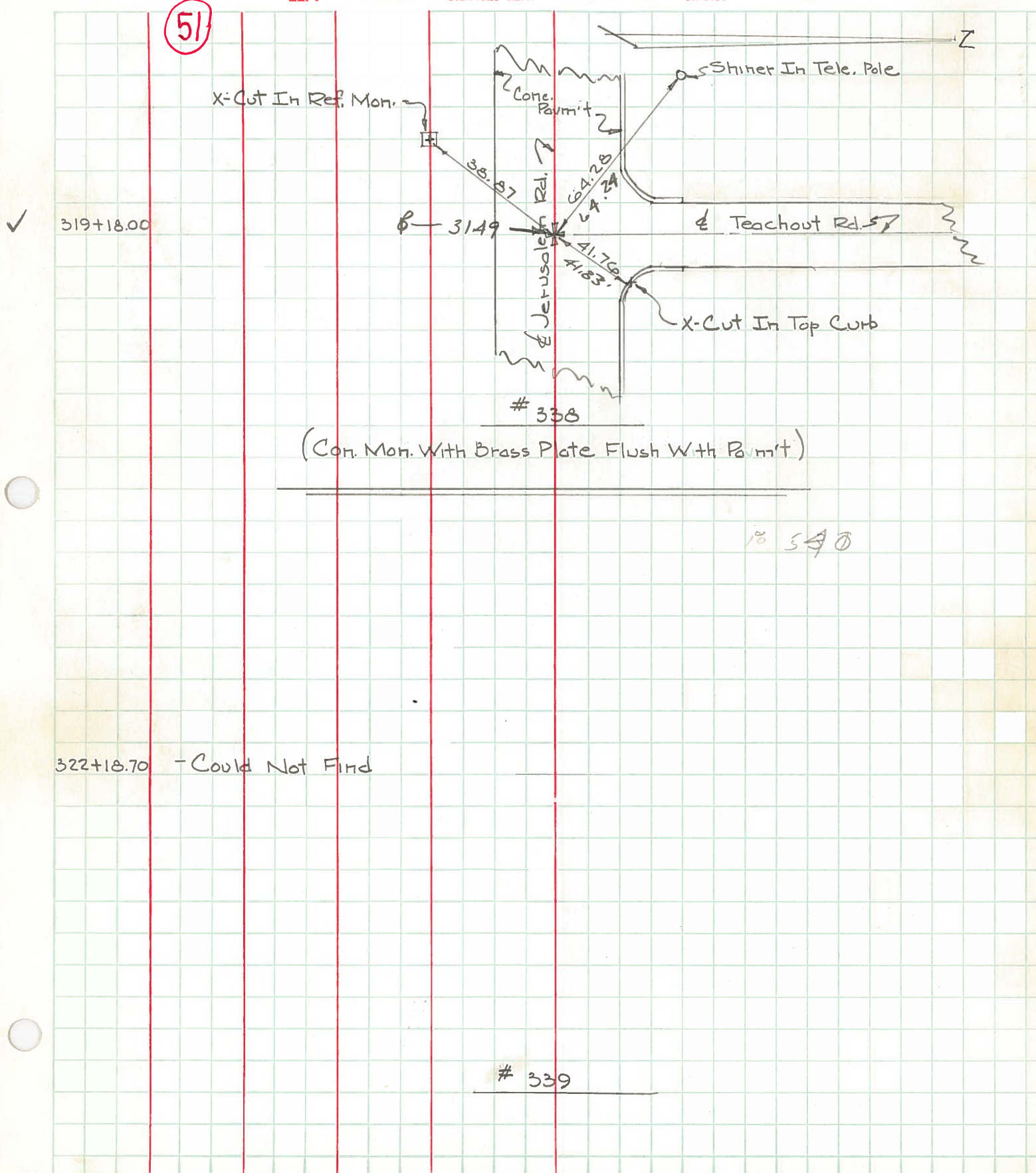
COUNTY Lucas DATE 7-18-67
6-5-67
 S. R. 2 WEATHER Fair
 SEC. 31.60 .39 TEMP. 75°

DESCRIPTION Ties for Control Point JOB NO. _____
 LEFT CENTER LINE RIGHT



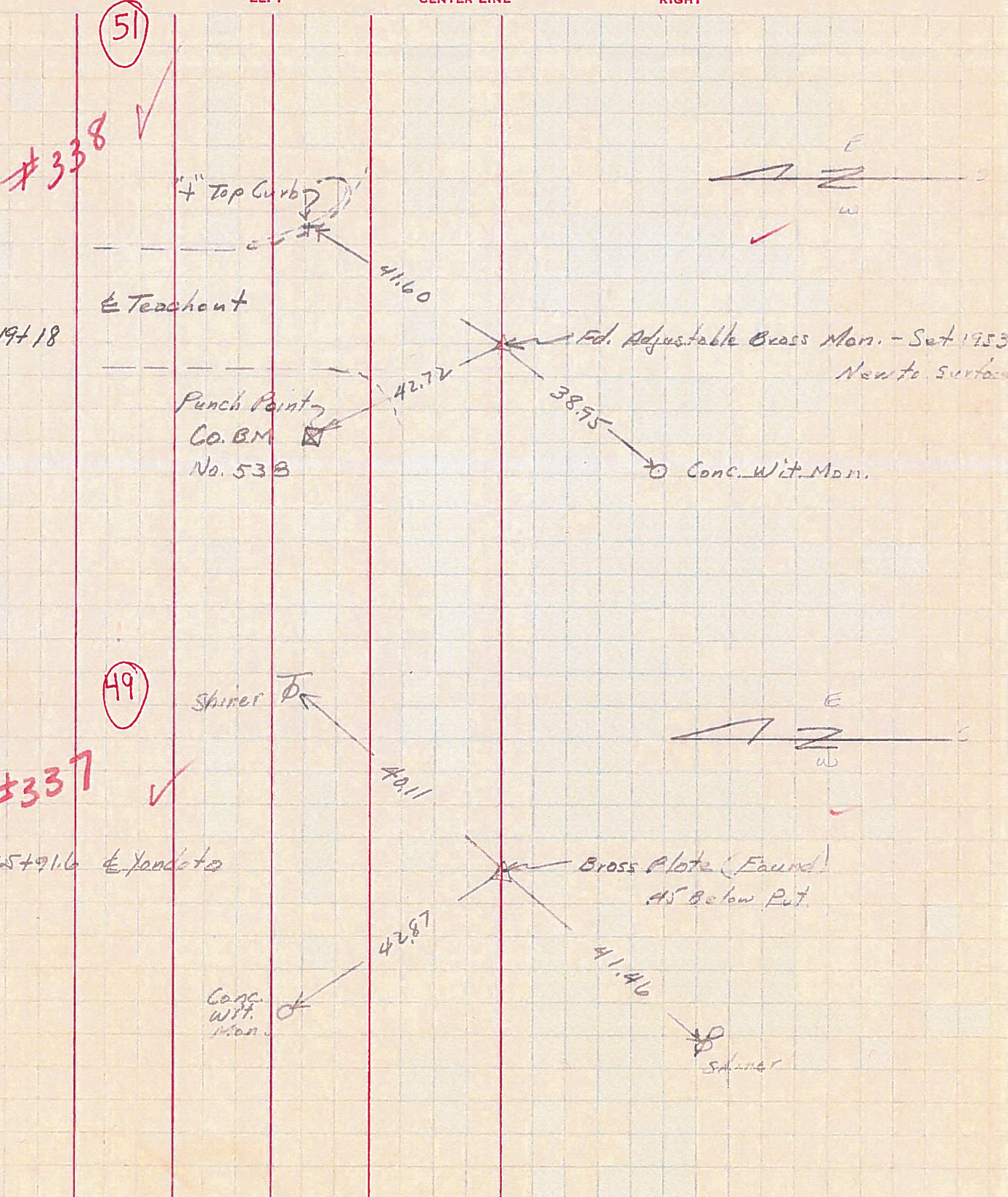
PERSONNEL	TITLE	PERSONNEL	TITLE	COUNTY	Lucas	DATE	Jan. 26, 1966
W. Derris	_____	_____	_____	S. R.	2	WEATHER	Sunny
D. Curtis	_____	_____	_____	SEC.	_____	TEMP.	16°
D. Granata	_____	_____	_____				
F. Omev	_____	_____	_____				

DESCRIPTION Jerusalem Rd. - Ref. Mon. & Control Points JOB NO. _____



PERSONNEL	TITLE	PERSONNEL	TITLE	COUNTY	DATE
Radzinski				Lucas	March 24, 54
Carpenter				S. R.	B
Stone				WEATHER	
Randley				SEC.	TEMP.
Chapodis				JOB NO.	

R.P.'s to Mon.



51

#338 ✓

4" Top Curb

E Teachant

319+18

41.60

Fd. Adjustable Brass Mon. - Set 1953
New to surface

Punch Point
Co. B.M. No. 53B

42.72

38.75

Conc. Wit. Mon.

49

#337 ✓

Shiner

265+91.6 E Yandota

40.11

Brass Plate (Found)
45 Below Put.

42.87

41.46

Conc. Wit. Mon.

Shiner

PERSONNEL TITLE PERSONNEL TITLE

COUNTY Lucas

DATE 3-23-54

S. R. #2

WEATHER

SEC.

TEMP.

DESCRIPTION

LEFT

CENTER LINE

RIGHT

JOB NO.

Sta. 317+18
Teachout Ed.
Ed adjustable brass mon.

N.E. to x-in top curb radius 41.60'
S.W. to conc. witness mon. 38.95'
N.W. to punch point Co. B.M. #538. 42.72'

(51)
#338

Sta. 322+18.7
(Did not find)

#339

Sta. 328+85.2
(Did not find)

#340

Howard Ed.

N.W. to +1m S.E. cor. conc. curb. 27.24'
N.E. to +1m S.W. cor. conc. curb 27.34'

(53)
#341