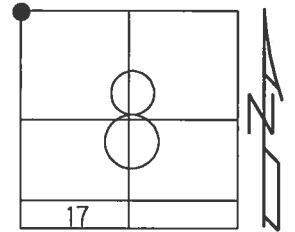


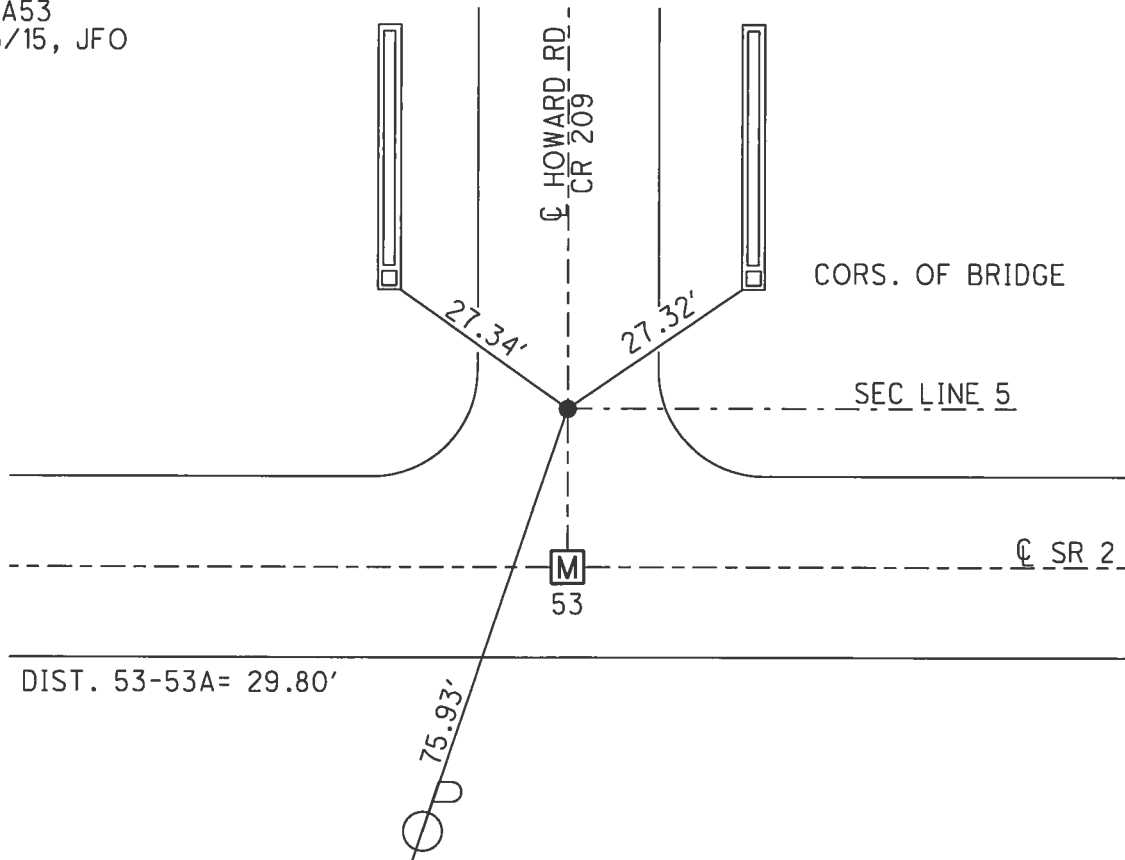
O.D.O.T. DISTRICT 2 SURVEY OFFICE (USE ONLY)

PERSONNEL \_\_\_\_\_ REFERENCE NO. 53 A SHEET 13 OF 20  
 NOTES CRONIN DATE 11/22/82 ROUTE 2  
 H.C. RIPPLE WEATHER SUNNY COUNTY LUCAS  
 R.C. GEYMAN TEMP. 50° TOWNSHIP JERUSALEM  
MOSSER SECTION 8  
BARBOOUR T 10 S R 10 E

TYPE MONUMENT ADJ. BRASS MON.  
 ON SURFACE - ~~BELOW~~ ON \_\_\_\_\_  
 LEFT - ☉ PAV'T - ~~RIGHT~~ 29.80'  
 - TO - EDGE PAVEMENT  
 S.L.M. 1718+88.09  
 GRID: NORTHING: 719413.271 EASTING: 1757153.531



RECORD:  
 FD ADJ. BRASS MON.  
 ON SURFACE  
 11/22/82, CRONIN  
 FD MAG NAIL  
 REFA53  
 3/6/15, JFO



Q.D.O.T. DISTRICT 2 SURVEY OFFICE

Sht. \_\_\_ of \_\_\_

County Lucas S.R. # 2

Date 11/22/82

Township JERUSALEM

Weather sunny

Section 8

Temp. 50°

T. N, R. E

Personnel Crown

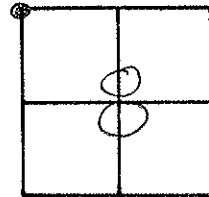
Ripple

Geyman

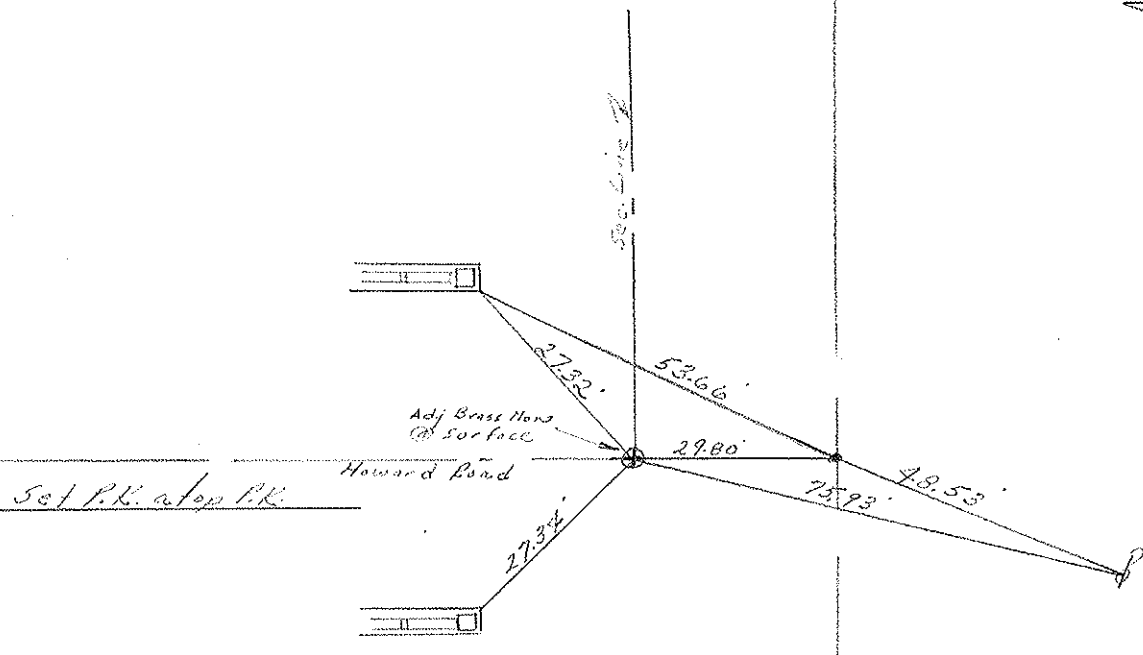
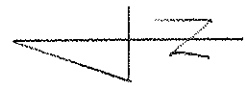
Masser

Barbour

53



SLM - 82.54



SLM # 27