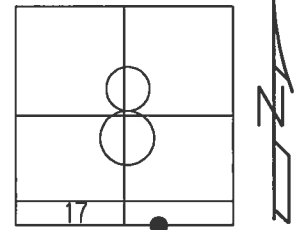


O.D.O.T. DISTRICT 2 SURVEY OFFICE (USE ONLY)

PERSONNEL \_\_\_\_\_ REFERENCE NO. 56 SHEET 20 OF 20  
 NOTES RHOADES DATE 6/24/15 ROUTE SR 2  
 H.C. O'DONNELL WEATHER FAIR COUNTY LUCAS  
 R.C. RHOADES TEMP. 70° TOWNSHIP JERUSALEM  
 \_\_\_\_\_ SECTION 17  
 \_\_\_\_\_ T 10 N R 10 E

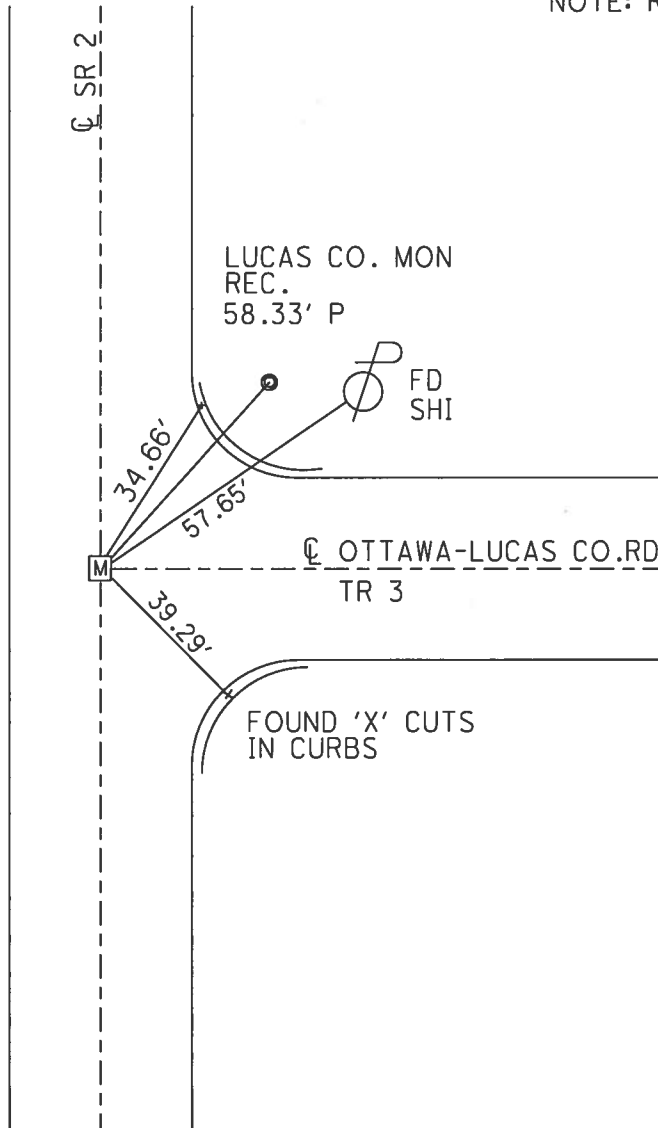
TYPE MONUMENT MONBOX  
 ON SURFACE - ~~BELOW~~ ON  
 LEFT - ☉ PAV'T - RIGHT ON  
- TO - EDGE PAVEMENT  
 S.L.M. 1806+79.83



GRID: NORTHING: 713628.751 EASTING: 1760754.762

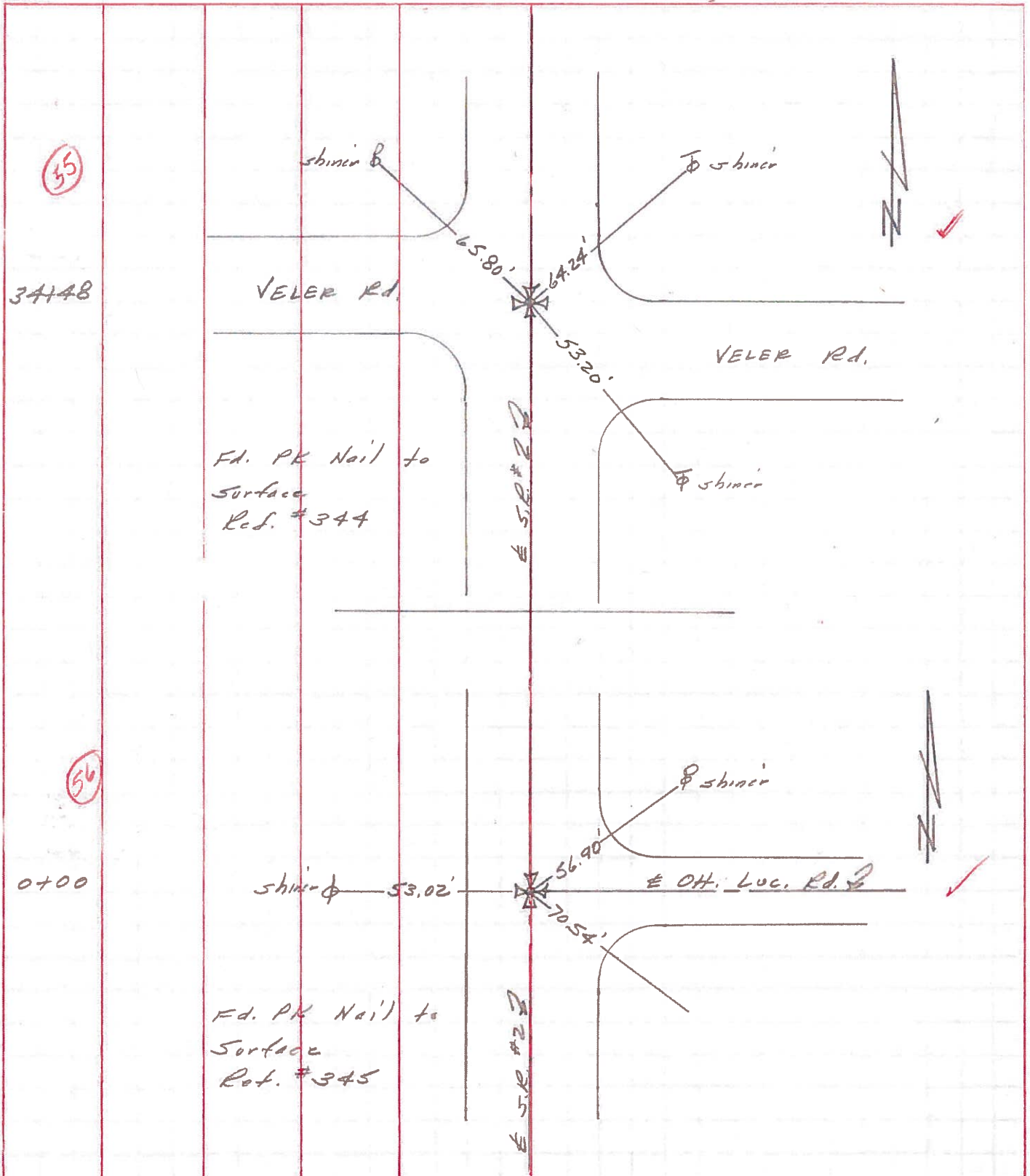
RECORD:  
 SET P.K./WASHER  
 ATOP ADJ.BRASS MON.  
 1/4/83, CRONIN  
 FD. BRASS DISC  
 IN CONC. 7" DOWN  
 PLACED LG.R.R.SPIKE  
 ON SURFACE  
 10/21/04, MB  
 FD MAG/WASHER  
 GPS, REF1  
 11/22/11, SAH  
 FD P.K.NAIL  
 4/17/13, SDC  
 FD MONBOX  
 W/ 1" IPIN  
 REF56  
 3/18/15, EBW  
 FD MONBOX  
 W/ 1" IPIN  
 GPS, NEWREF1  
 6/24/15, JFO

NOTE: REF 1 OTT CO.



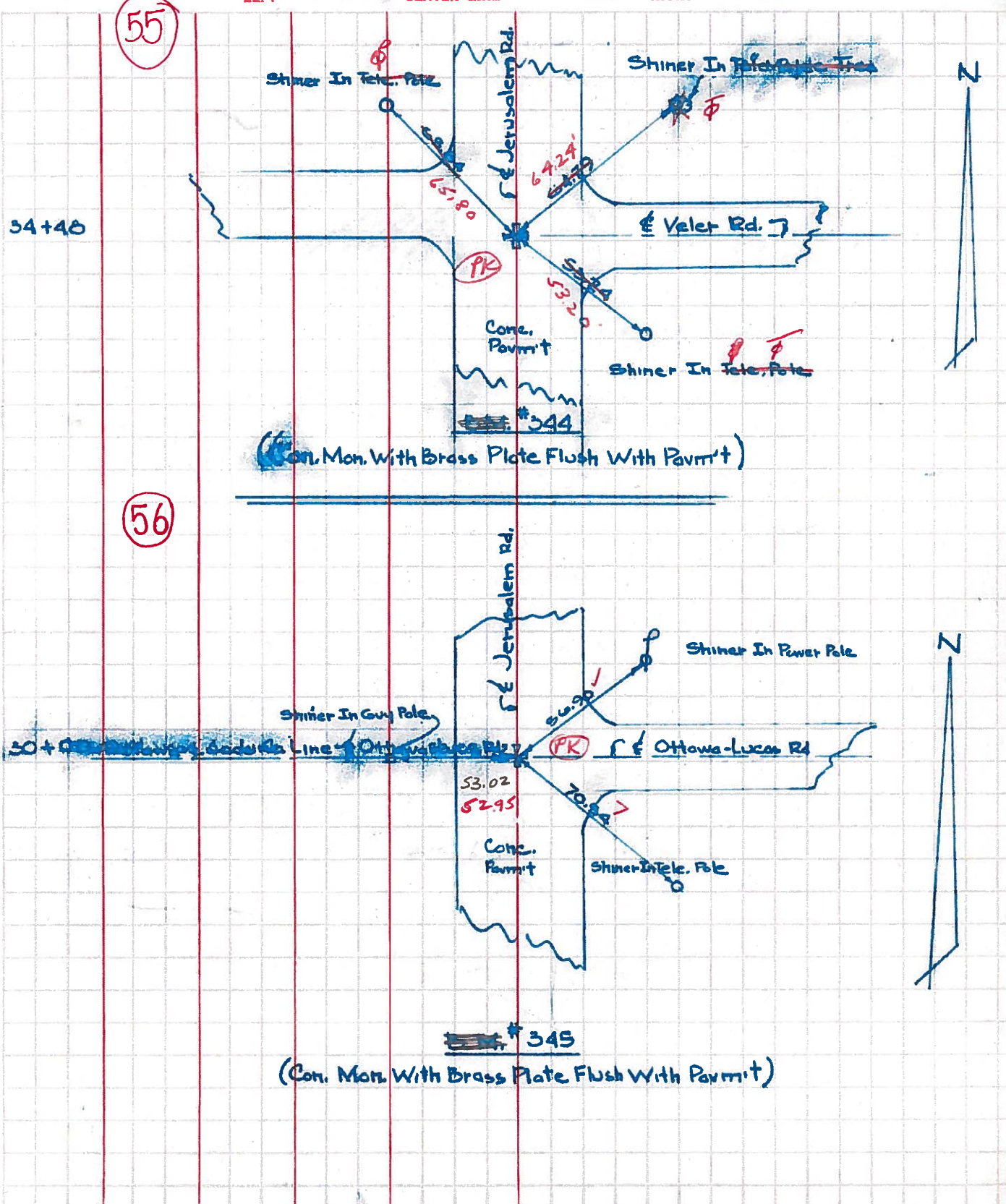
PERSONNEL	TITLE	PERSONNEL	TITLE	COUNTY	DATE
Stone	Notes			Lucas	28 June 71
Michalak	H.C.			S. R. #2	WEATHER Hot
Schroder	R.C.			SEC. Ottawa Co. Line West	TEMP. 96°
Farr	FS				

DESCRIPTION References to Control Points JOB NO. \_\_\_\_\_



PERSONNEL	TITLE	PERSONNEL	TITLE	COUNTY	DATE
W. Denno				Lucas	Jan. 26, 1966
D. Curtis				2	SUNNY
D. Granata					14°
F. Orney					

DESCRIPTION Jerusalem Rd. - Ref. Mon. & Control Points JOB NO. \_\_\_\_\_





PERSONNEL TITLE PERSONNEL TITLE

COUNTY Lucas

DATE

S. R. #2

WEATHER

SEC.

TEMP.

DESCRIPTION Bono-Port Clinton Rd.

JOB NO.

LEFT

CENTER LINE

RIGHT

LEFT	CENTER LINE	RIGHT	JOB NO.
17550+00			
1748+95.24	#342		
Sta. 57+71.53 P.I. Curve	Did Not find Jan 26, 1966	S.E. to tacked Hub S.W. to tacked Hub	34.00' 34.00'
	#343		
Sta 34+48		S.E. to t-in E. parapet of culvert. 25.76 S.W. to t-in W. parapet of culvert 25.71' N. to shiner in T.P. 40.67'	
	#344		
Sta. 0+00 Ottawa-Lucas Co. line	(56)	N.E. to shiner in P.P. 38.39' S.E. to shiner in P.P. 39.63' W. to shiner in Guy pole 28.54'	
	#345		



PERSONNEL TITLE PERSONNEL TITLE

COUNTY Lucas & Att. DATE

S. H. 2 WEATHER

SEC. TEMP.

DESCRIPTION LEFT CENTER LINE RIGHT

