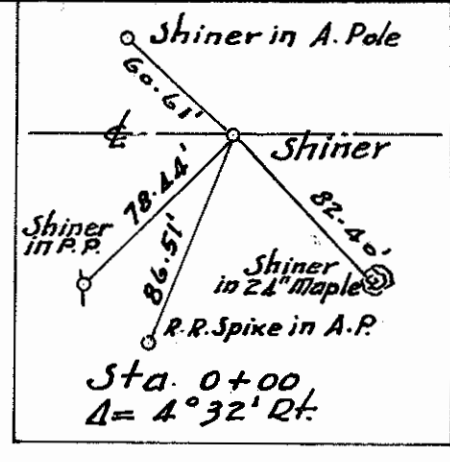


SEC. 19 T-9-S R-5-E RICHFIELD TWP.

LUCAS COUNTY
 S.H. 21 SECS. E, F & G (PT.)
 R/W PLANS

Date: 11/25/11 Drawn By: HH
 Revised: 2/16/12 2/12/12 3/11/12
 LENGTH OF PROJECT: 18,450 FT. = 3.589 MI.
 LUC-20 0.00 359



Curve Data
 $\Delta = 40^\circ 32' Rt.$
 $D = 2^\circ 00'$
 $R = 2864.79'$
 $T = 113.39'$
 $L = 226.65'$
 $E = 2.23'$

Beginning of Project
 S.H. 21 Sec. E, F & G (PT.)
 Sta. 0+00

FLOYD A. HALL
 R. 3 SWANTON, O.

JOHN WEIDNER
 R. 3 SWANTON, O.

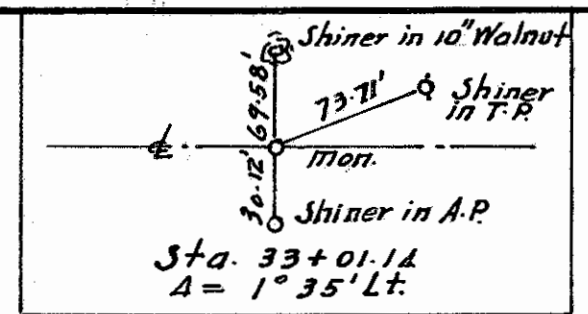
STEPHEN L. & MARY M. LANGENDERFER
 R. 3 SWANTON, O.

Curve Data
 $\Delta = 1^\circ 35' Lt.$
 $D = 0^\circ 33'$
 $R = 10417.42'$
 $T = 123.91'$
 $L = 287.76'$
 $E = 1.0'$
 $PT = 33+01.14$

ALBERT LINEHAN
 R. 20 SWANTON, O.

JULIUS LOEFFLER
 R. 20 SWANTON, O.

SEC. 30 T-9-S R-5-E RICHFIELD TWP.
 T-9-S R-5-E RICHFIELD TWP.



AMELIA C. LOEFFLER
 R. 3 SWANTON, O.

IDA M. TUNNISON MYERS
 BERKEY, O.

ANTHONY MYERS
 BERKEY, O.

SEC. 20

Sta. 59+25.13
 $\Delta = 0^\circ 32' 30'' Rt.$

ROSA PFLUM
 BERKEY, O.

JULIUS LOEFFLER
 R. 20 SWANTON, O.

FRED EISEL
 BERKEY, O.

LERoy B. & MARY R. GIBSON
 R. 1 BERKEY, O.

A. EUGENE & ANNA GIBSON
 R. 1 METAMORA, O.

Curve Data
 $\Delta = 0^\circ 32' 30'' Rt.$
 $D = 0^\circ 15'$
 $R = 22918.32'$
 $T = 108.30'$
 $L = 216.57'$
 $E = 0.40'$
 $PT = 59+25.13$

SEC. 30 T-9-S R-5-E RICHFIELD TWP.

SEC. 29

Sealed June 1997

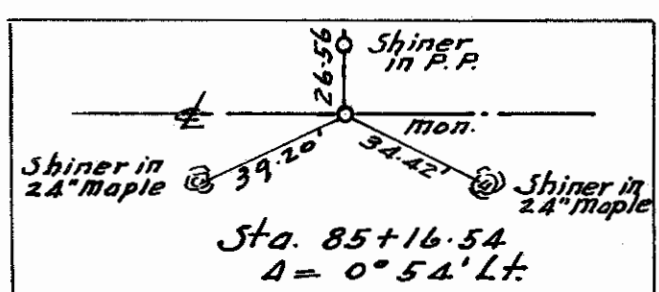
R3020 #1 C-13

C-13

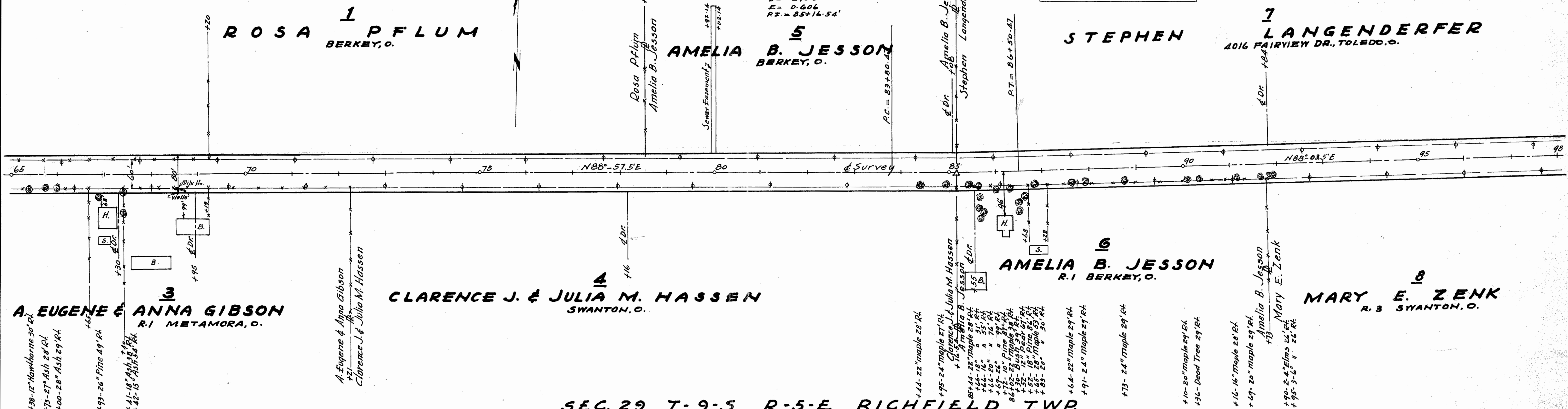
SEC. 20 T-9-S R-5-E RICHFIELD TWP

LUCAS COUNTY
 S.H. 21 SECS. E, F & G (PT.)
 R/W PLANS

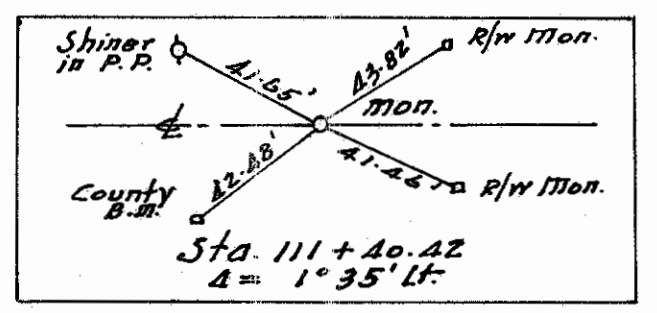
Date: 11/25/41 Drawn By: HH
 Revised: 2/16/42 2/20/42 7/13/42
 LENGTH OF PROJECT: 18,950 FT. - 3.589 MI.



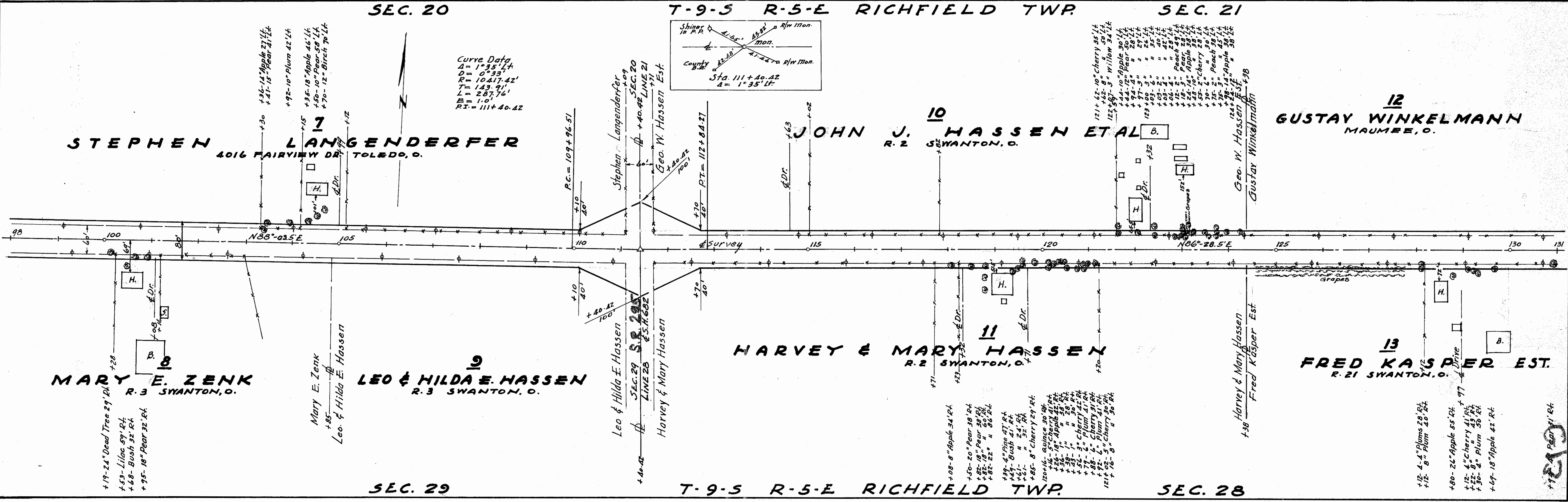
Curve Data
 Δ = 0° 54' Lt
 D = 0° 20'
 R = 17188.74'
 T = 135.07'
 L = 270.0'
 E = 0.604
 P.T. = 85+16.54'



SEC. 29 T-9-S R-5-E RICHFIELD TWP



Curve Data
 Δ = 1° 35' Lt
 D = 0° 33'
 R = 10417.42'
 T = 143.91'
 L = 287.76'
 E = 1.0
 P.T. = 111+40.42'



SEC. 29

T-9-S R-5-E RICHFIELD TWP

SEC. 28

FOR ANY QUESTIONS PLEASE CONTACT ODOT DIST. 2-REALESTATE AT (419)353-8131

Revised 1997

1000
JUNE 1997

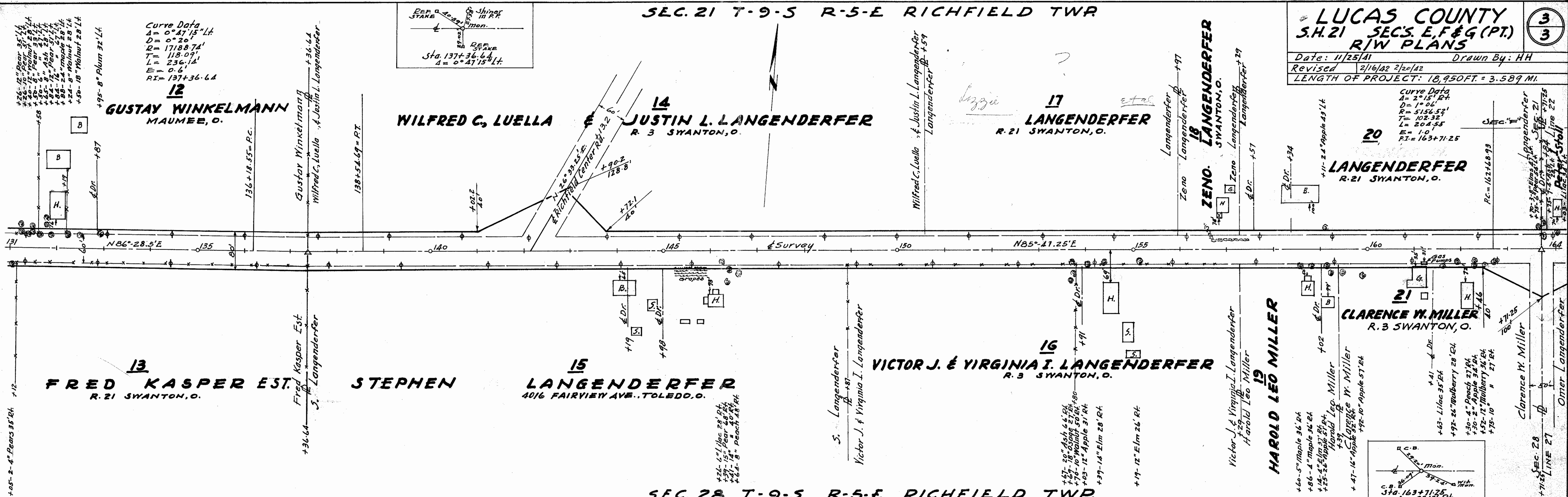
SEC. 21 T-9-S R-5-E RICHFIELD TWP

LUCAS COUNTY
S.H. 21 SECS. E, F & G (PT.)
R/W PLANS

3
3

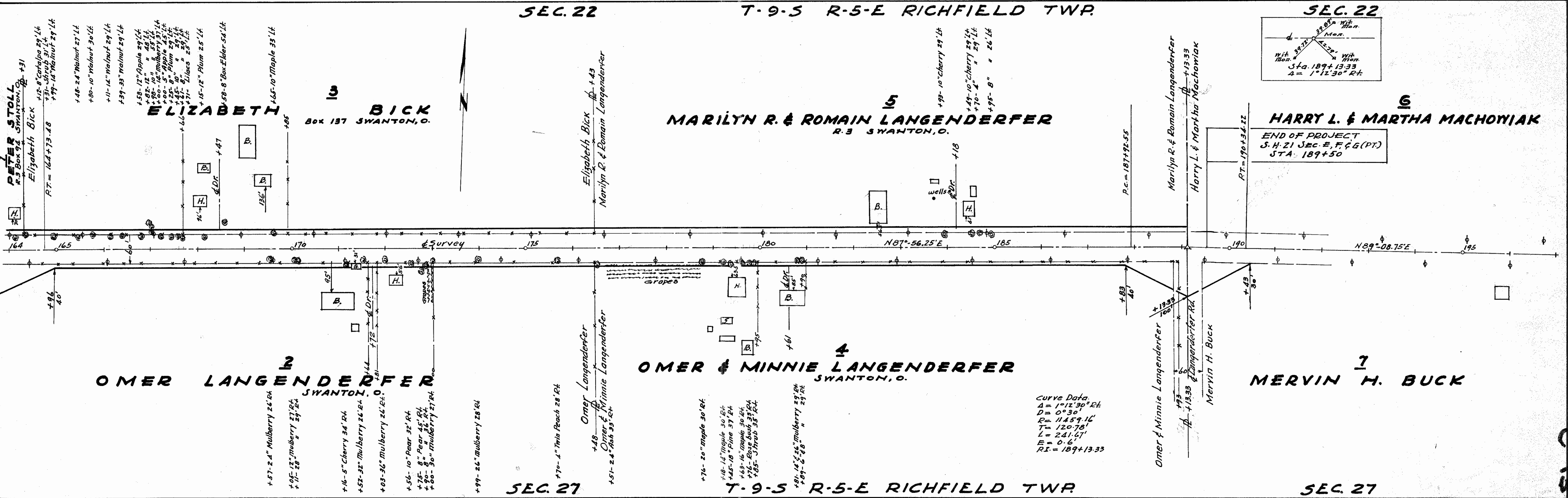
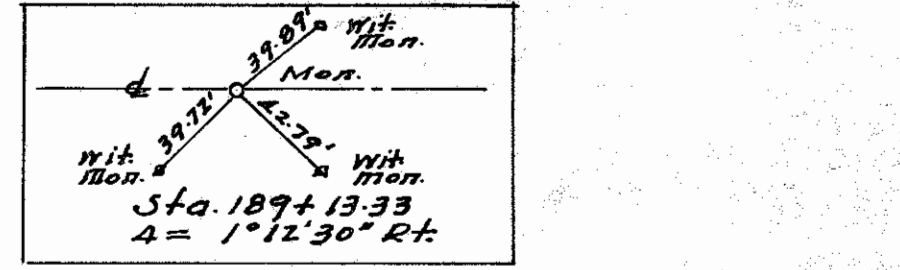
Date: 11/25/41 Drawn By: HH
Revised: 2/16/42 2/20/42
LENGTH OF PROJECT: 18,950 FT. = 3.589 MI.

Curve Data
Δ = 2°15' R/L
D = 112.4'
R = 5154.52'
T = 102.32'
L = 204.55'
E = 1.0
PI = 163+71.25



SEC. 22 T-9-S R-5-E RICHFIELD TWP

SEC. 22



Curve Data
Δ = 1°12'30" R/L
D = 0°30'
R = 11459.14'
T = 120.70'
L = 241.67'
E = 0.6
PI = 189+13.33

C-13

C-12