

DESIGN DESIGNATION

Current A.D.T. = 16,467 (1974)
 Design Year A.D.T. = 35,482 (1994)
 DHV = 4,260
 D(Directional Distribution) = 65%
 T(Percent B & C Trucks) = 5%
 Design Speed = 55 MPH

MICROFILMED
 OCT 23 1978
 REPRODUCTION

**STATE OF OHIO
 DEPARTMENT OF TRANSPORTATION
 LUC-20-(9.41-9.43) (9.64-9.77)
 SYLVANIA TOWNSHIP
 LUCAS COUNTY**

OHIO	1
FHWA REGION 5	12
HHS-546(15)	
LUC-20-(9.41-9.43) (9.64-9.77)	
PLAN NO. 252	

HHS-546(15)

CONVENTIONAL SIGNS

County Line	-----	Limited Access (only)	-----	LA
Township Line	-----	Right of Way (only)	-----	RW
Section Line	-----	Limited Access & Right of Way	-----	LA & RW
Corporation Line	----- or -----	Existing Right of Way	-----	
Fence Line (existing)	-x-x-	Property Line	— — (in existing fence)	-x-x-
Center Line	352 or 353	Railroad	----- or -----	
Trees	⊙, ⊙, ⊙ (to be removed)	Guardrail (existing)	— — (proposed)	— —
Utility Poles	⊕, ⊕, ⊕	Work Limits	-----	

INDEX OF SHEETS

Title Sheet	1
Construction Details	2
General Notes & General Summary	3
Calculations and Sub Summaries	4
Plan and Profile	5-6
Cross Sections	7-9
Pavement, Guard Rail & Drive Details	10-11
Guard Rail Bridge Connection Details	12

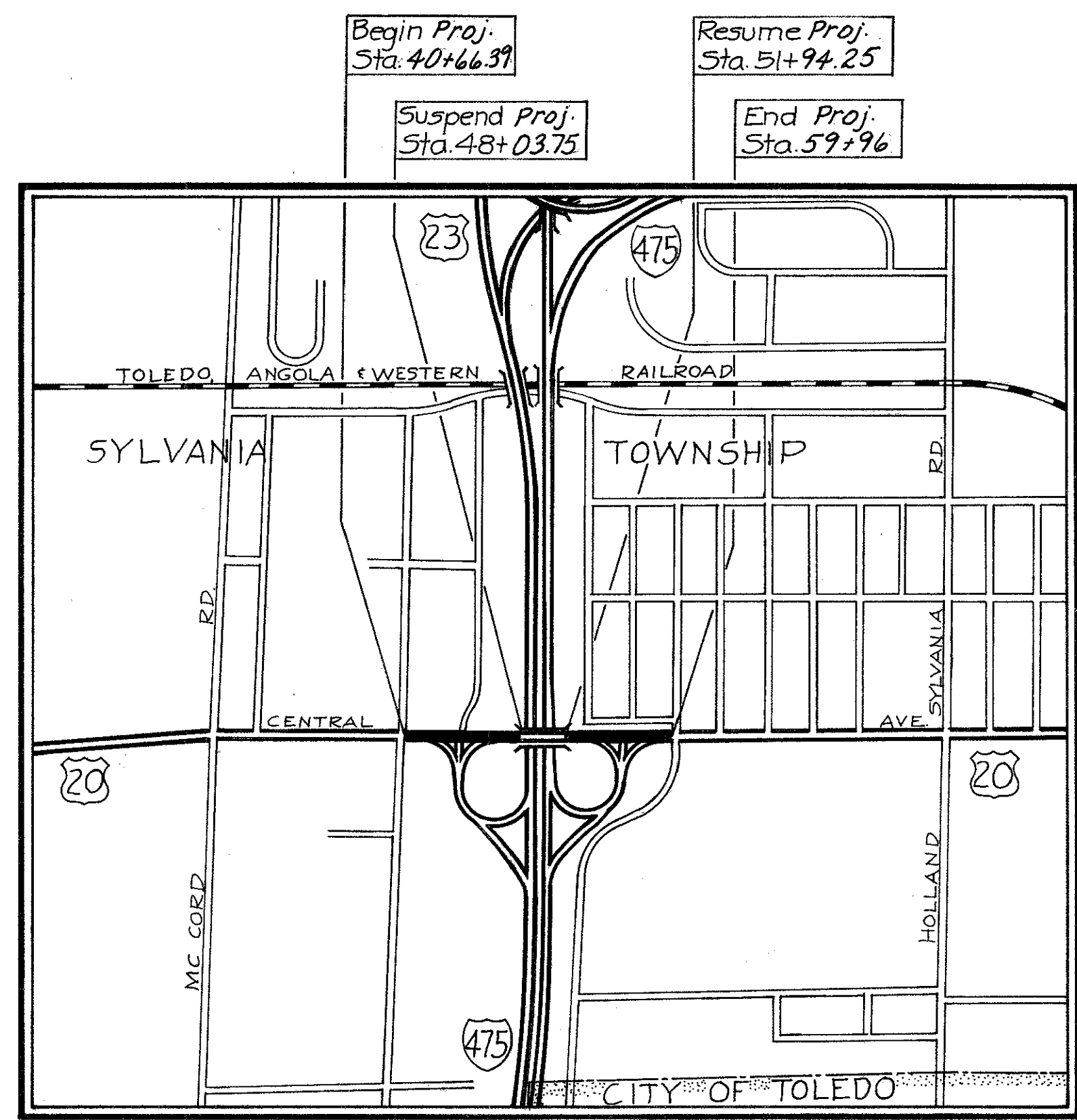
LINE DATA

PROJECT

Begin Project Sta. 40+66.39
 Suspend Project Sta. 48+03.75 = 737.36 Lin. Ft.
 Resume Project Sta. 51+94.25
 End Project Sta. 59+96.00 = 801.75 Lin. Ft.
 Net length Project = 1539.11 Lin. Ft. = 0.291 Miles

Work:

Begin Work Sta. 39+89.5
 Suspend Work Sta. 48+16.75 = 827.25 Lin. Ft.
 Resume Work Sta. 51+81.25
 End Work Sta. 60+04 = 822.75 Lin. Ft.
 Net length work = 1,650.00 Lin. Ft.
 = 0.312 Miles



LOCATION MAP

SCALE IN FEET

Portion to be improved: -----
 State & Federal Routes: -----
 Other Roads: -----

SCALES

Plan: -----
 Profile: ----- Horizontal -----, Vertical -----
 Cross Section: Horizontal -----, Vertical -----

Sheet No. 3 revised
 Apr. 28, '75 AWG

SUPPLEMENTAL SPECIFICATIONS	
1001	9-20-72

PRINTS OF STANDARD CONSTRUCTION DRAWINGS			
BP-3	1-1-71	MC-3	6-1-73
BP-4	1-1-71	MC-6	6-1-65
BP-5	6-1-72		
BP-7	1-1-66		
GR-2A	1-1-71		
GR-2B	11-9-71		
GR-4	11-9-71		

1975 SPECIFICATIONS

The standard specifications of the State of Ohio, Department of Transportation, including changes and supplemental specifications listed in the proposal shall govern this improvement.

The right of way for this improvement will be provided by the State of Ohio.

I hereby approve these plans and declare that the making of this improvement will not require the closing of the highway to traffic and that provisions for the maintenance and safety of traffic will be as set forth on these plans and estimates.

Approved: *[Signature]*
 Date 10-29-75 District Deputy Director of Transportation

Approved: *[Signature]*
 Date 11-1-74 Engineer of Bridges

Approved: *[Signature]*
 Date 1-21-75 Engineer of Maintenance

Approved: *[Signature]*
 Date 1-21-75 Asst. Assistant Deputy Director, Operations and Maintenance

Approved: _____
 Date _____ Assistant Deputy Director for Real Estate

Approved: *[Signature]*
 Date 1-21-75 Asst. Dep. Director, Program Development

Approved: _____
 Date _____ Chief Engineer, Division of Highways

Approved: *[Signature]*
 Date 1-21-75 Deputy Director, Division of Highways

Approved: _____
 Date _____ Asst. Director, Department of Transportation

Approved: *[Signature]*
 Date 1-22-75 Director, Department of Transportation

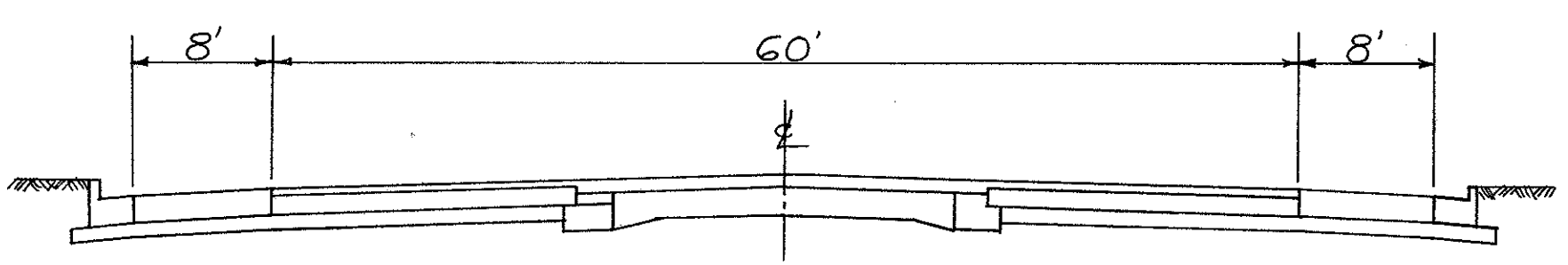
DEPARTMENT OF TRANSPORTATION
 FEDERAL HIGHWAY ADMINISTRATION

APPROVED: _____

DIVISION ENGINEER _____

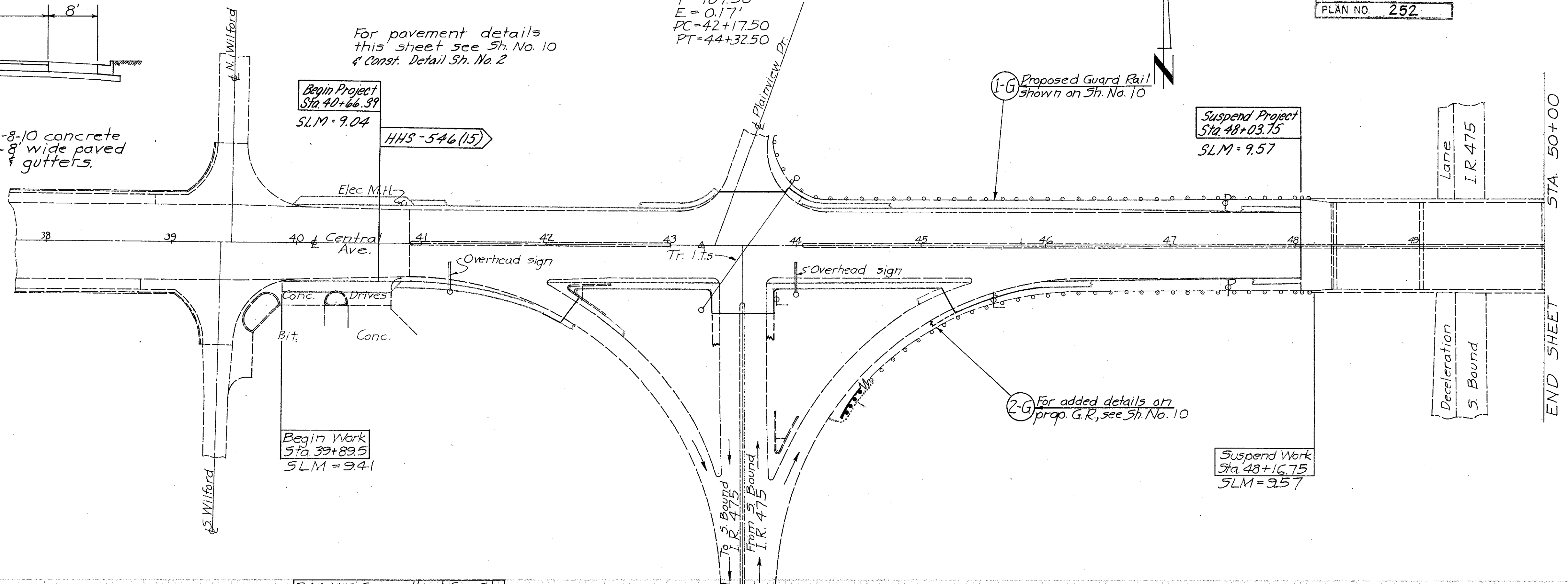
DATE _____

CURVE DATA
 P.I. Sta. 43+25
 $\Delta = 0^{\circ}21'30''$ LT
 $D = 0^{\circ}-10'$
 $R = 34,377.48'$
 $L = 215.00'$
 $T = 107.50'$
 $E = 0.17'$
 $PC = 42+17.50$
 $PT = 44+32.50$

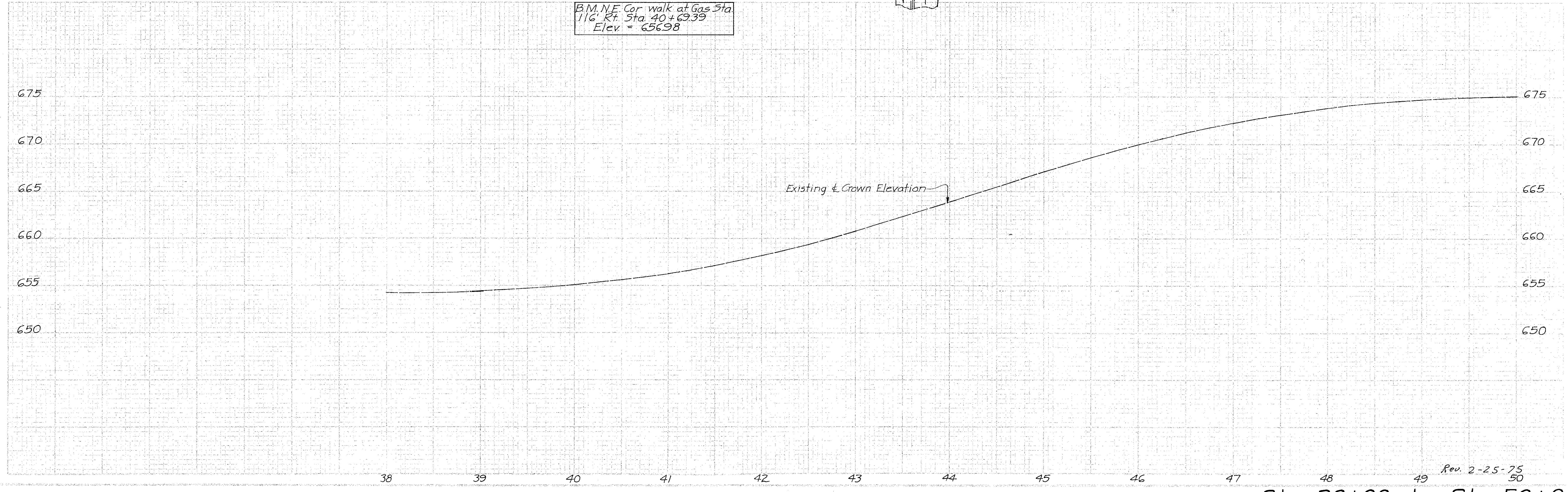


TYPICAL SECTION
 ADJOINING PAVEMENT
 2½"-5½" Bituminous concrete on 20' wide 10-8-8-10 concrete
 widened to 60' with bituminous macadam, 2-8' wide paved
 shoulders and 2-2½' wide concrete curbs & gutters.

For pavement details
 this sheet see Sh. No. 10
 & Const. Detail Sh. No. 2



B.M. NE Cor walk at Gas Sta
 116' Rt. Sta. 40+69.39
 Elev. = 656.98



CURVE DATA
 P.I. Sta 57+94.88
 $\Delta = 0^\circ 51' 30''$ Lt.
 $D = 0^\circ 20'$
 $R = 17,188.73'$
 $T = 128.75'$
 $L = 257.50'$
 $E = 0.48'$
 $P.C. = 56+66.13$
 $P.T. = 59+23.63$

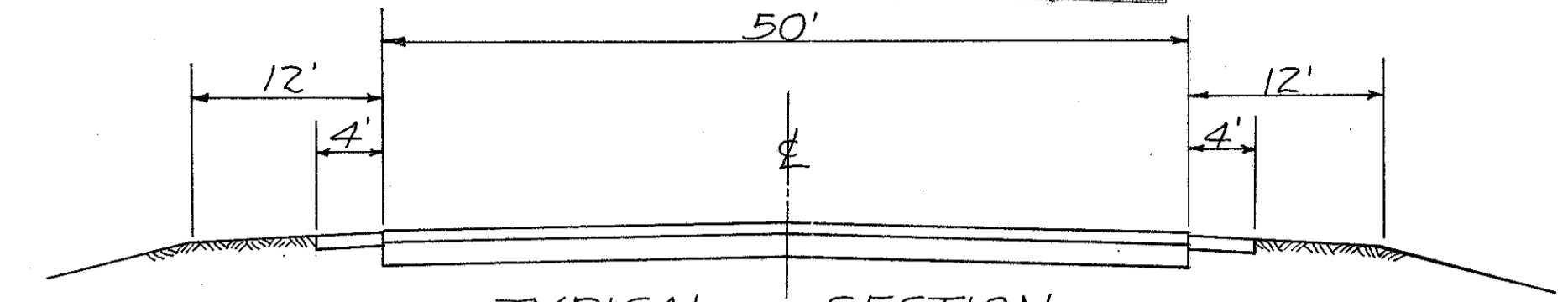
For pavement details
 this sheet refer to
 Sh. No. 11 & Const.
 Details Sh. No. 2

PLD NO.	STATE	PROJECT
2	OHIO	

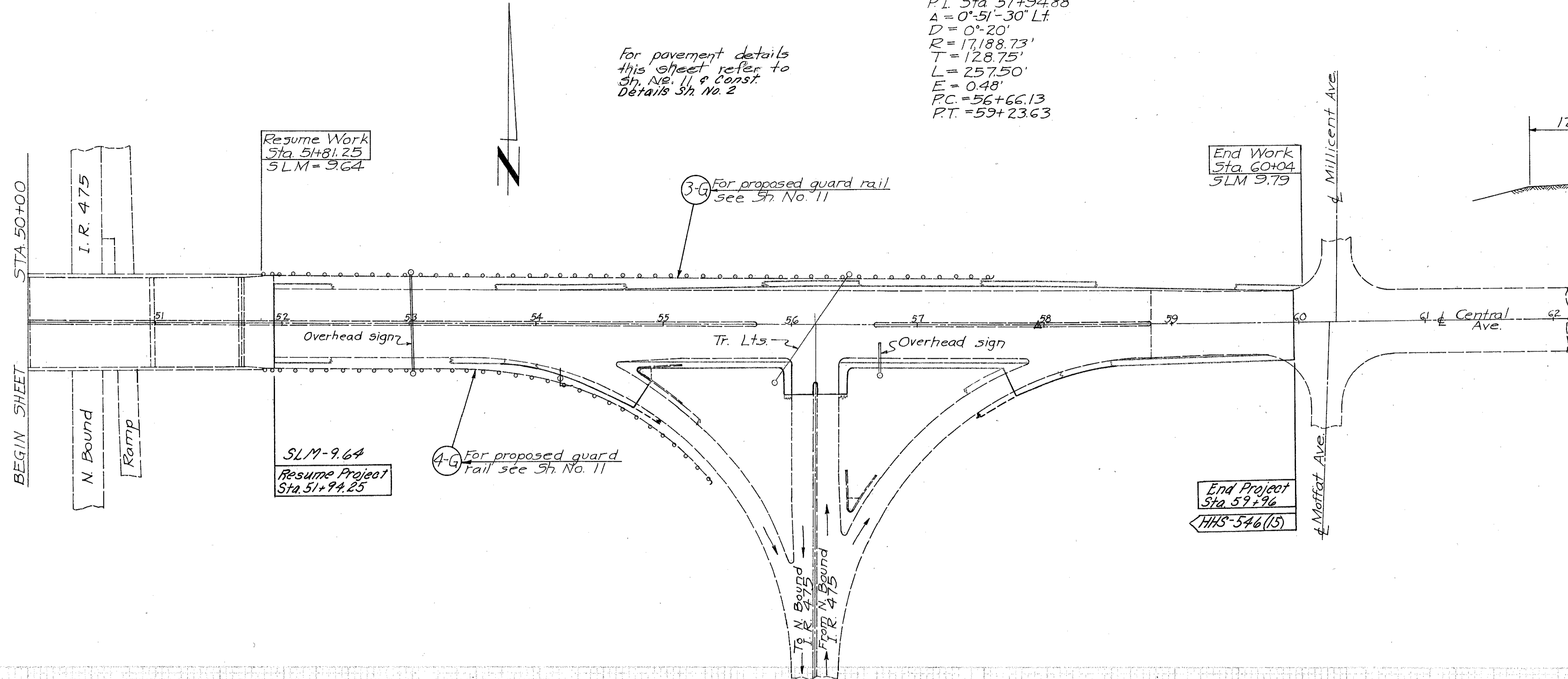
LUC-20-(941-9.43)-(9.64-9.77)

6
12

PLAN NO. 252



TYPICAL SECTION
 ADJOINING PAVEMENT
 5 1/2" Bituminous concrete on 8" stone
 with 2-4' wide 6" stone shoulders.



Resume Work
 Sta. 51+81.25
 SLM-9.64

End Work
 Sta. 60+04
 SLM 9.79

SLM-9.64
 Resume Project
 Sta. 51+94.25

End Project
 Sta. 59+96
 HHS-546(15)

