

STATE OF OHIO DEPARTMENT OF TRANSPORTATION

LUC-20-9.73

SYLVANIA TOWNSHIP
LUCAS COUNTY

MICROFILMED
DEC 3 1984

MICROFILMED
NOV 7 1990

OHIO	1
FHWA REGION 5	97
FEDERAL PROJECT	

LUC-20-9.73

QUANTITIES
CALC BY J.C.W. DATE 10-14-81
CKD BY J.E.H. DATE 5-12-82

HES-69(58)

1983 SPECIFICATIONS

The standard specifications of the State of Ohio, Department of Transportation, including changes and supplemental specifications listed in the proposal shall govern this improvement.

The right of way for this improvement will be provided by the State of Ohio.

I hereby approve these plans and declare that the making of this improvement will not require the closing of the highway to traffic and that provisions for the maintenance and safety of traffic will be as set forth on these plans and estimates.

Approved *R. J. Gorman*
Date 4-4-83 District Deputy Director of Transportation

Approved _____
Date _____ Engineer, Bureau of Bridges and Structural Design

Approved *James R. Longenecker*
Date 6-28-83 Chief Engineer, Operations

Approved *Warren J. Smith*
Date 11-22-83 Director, Department of Transportation

CONVENTIONAL SIGNS

County Line	-----	Limited Access (only)	LA
Township Line	-----	Right of Way (only)	RW
Section Line	-----	Limited Access & Right of Way	LA & RW
Corporation Line	----- or -----	Existing Right of Way	-----
Fence Line (existing)	-x-x- (proposed) -x-x-	Property Line	— — (in existing fence) -x-x-
Center Line	352 or 353	Railroad	----- or -----
Trees, Stumps	(to be removed)	Guardrail (existing)	—o—o—o— (proposed) —o—o—o—
Utility Poles: Telephone	φ, Power φ, Light φ.	Construction Limits	-----

INDEX OF SHEETS

Title Sheet	-----	1
Schematic Plan and Design Designation	-----	2
Typical Sections and Construction Details	-----	3-6
Maintenance of Traffic Notes	-----	7 & 7A
General Notes	-----	8-10
Subsummaries	-----	11-16
General Summary	-----	17-19
Plan Sheets	-----	20-28
Cross Sections	-----	29-61
Intersection Details	-----	62-64
Driveway Details	-----	65
Drainage Details	-----	66
Lighting Notes	-----	67
Lighting Details	-----	68
Traffic Control	-----	69-97

LINE DATA

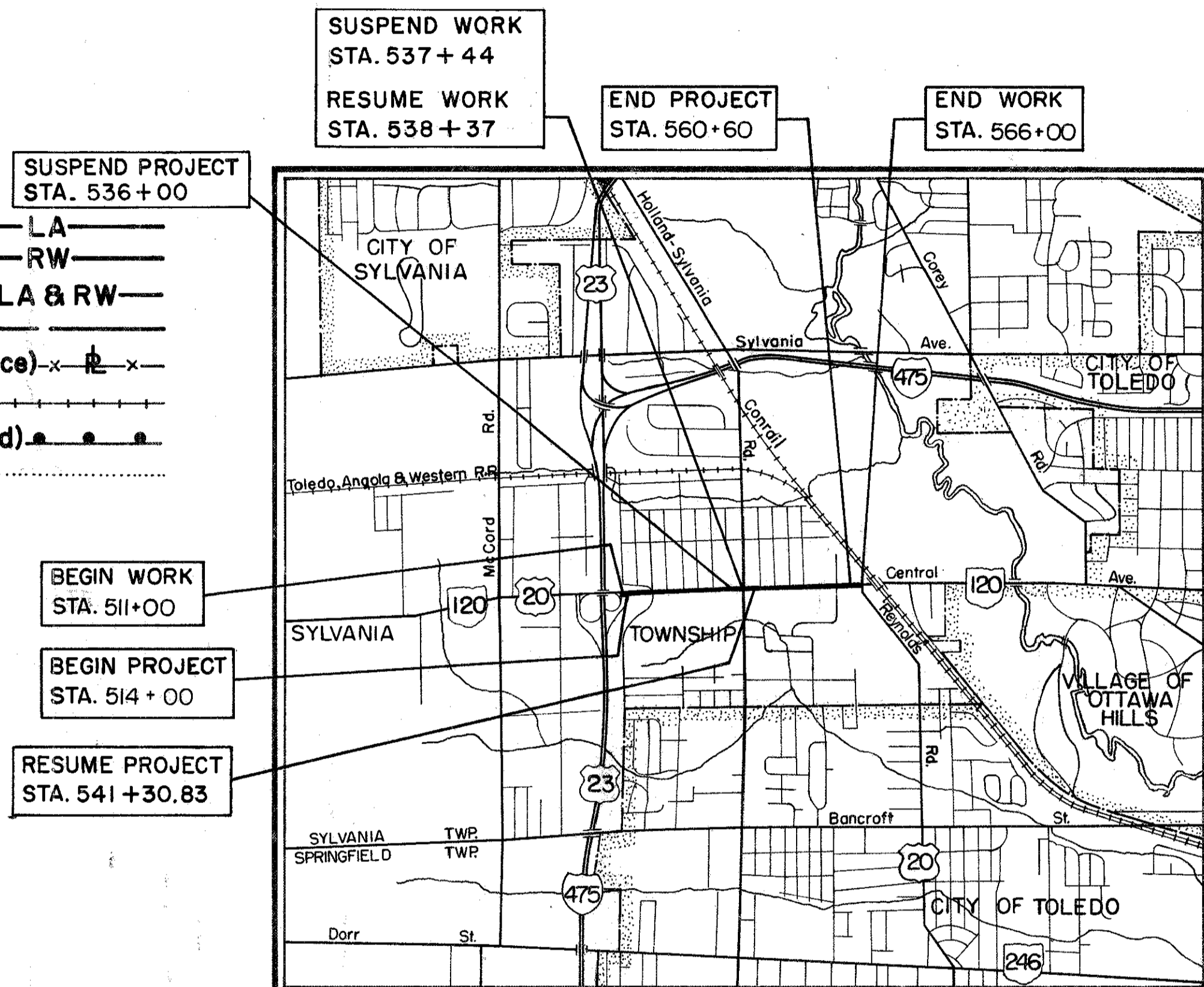
PROJECT

Begin Project - Sta. 514+00 Suspend Project - Sta. 536+00
 End Project - Sta. 560+60 Resume Project - Sta. 541+30.83
 Deduction - 530.83 Lin.Ft.
 Length of Project = 4,129.17 Lin.Ft. or 0.782 Mile

WORK

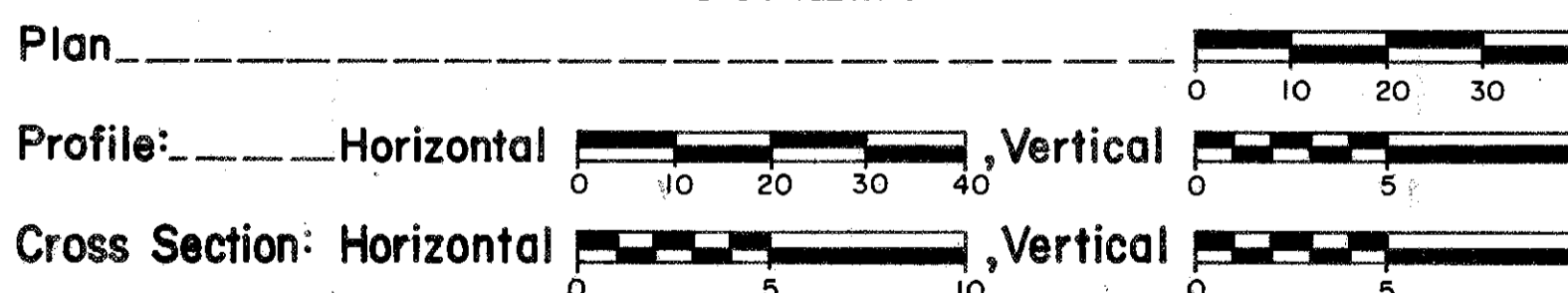
Begin Work - Sta. 511+00 Suspend Work - Sta. 537+44
 End Work - Sta. 566+00 Resume Work - Sta. 538+37
 Deduction - 93.00 Lin.Ft.
 Length of Work = 5,407.00 Lin.Ft. or 1.024 Mile

Note: Sheet No.14 has been deleted from the plan.



Portion to be improved _____
 State & Federal Routes _____
 Other Roads _____

SCALES



SUPPLEMENTAL SPECIFICATIONS	
835	9-14-81
803	5-27-83

SUPPLEMENTAL PRINTS OF STANDARD CONSTRUCTION DRAWINGS									
BP-3	12-6-76	GR-4A	2-5-82	HL-10	6-1-79	TC-41.20	3-26-79	TC-85.20	4-18-79
BP-4	7-16-81	MC-3	6-1-73	HL-11	6-1-79	TC-41.41	8-2-79		
BP-5	7-16-81	MC-4	7-26-76	HL-12	4-6-73	TC-42.10	8-19-77	BP-2	12-6-76
BP-6	6-1-65	MC-11	8-1-78			TC-42.20	3-26-79	I-1	6-1-65
BP-7	12-6-76	MH-1	6-12-75	TC-12.30	6-10-81	TC-51.11	4-3-79		
CB-2-2-A#B	5-1-79	MH-3	6-12-75	TC-17.10	3-1-79	TC-52.10	4-3-79		
CB-2-3-4-2-4	5-1-79	MH-5	6-12-75	TC-21.20	5-31-79	TC-52.20	4-3-79		
CB-3	5-1-79	LA-1	6-1-79	TC-22.10	3-1-79				
CB-3A	5-1-79	HL-1	9-6-73	TC-22.20	3-1-79				
CB-6	5-1-79	HL-2	7-27-73	TC-31.21	3-6-79				
GR-1	2-5-82	HL-3	7-27-73	TC-32.10	3-8-79	TC-71.10	4-9-79		
GR-2B	2-5-82	HL-8	1-21-76	TC-32.11	3-21-79	TC-81.10	4-10-79		
GR-4	2-5-82	HL-9	3-22-77	TC-35.10	10-5-77	TC-84.20	4-17-79		

Plan Prepared By:
 Ohio Department of Transportation
 District 2
 Design Office

SEAL

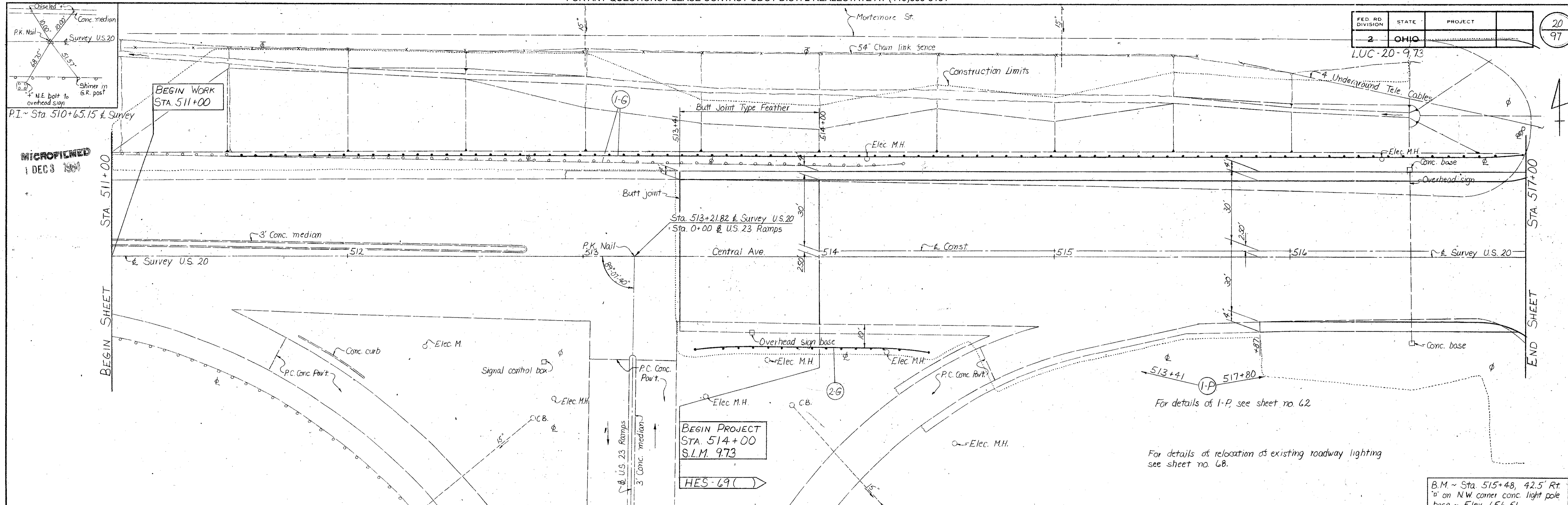
LUC-20-9.73
 Letting _____ 19____, Contract No. _____
 Rev. 11-21-73

DEPARTMENT OF TRANSPORTATION
 FEDERAL HIGHWAY ADMINISTRATION

APPROVED: _____

DIVISION ADMINISTRATOR _____ DATE _____

REV. 1-4-84

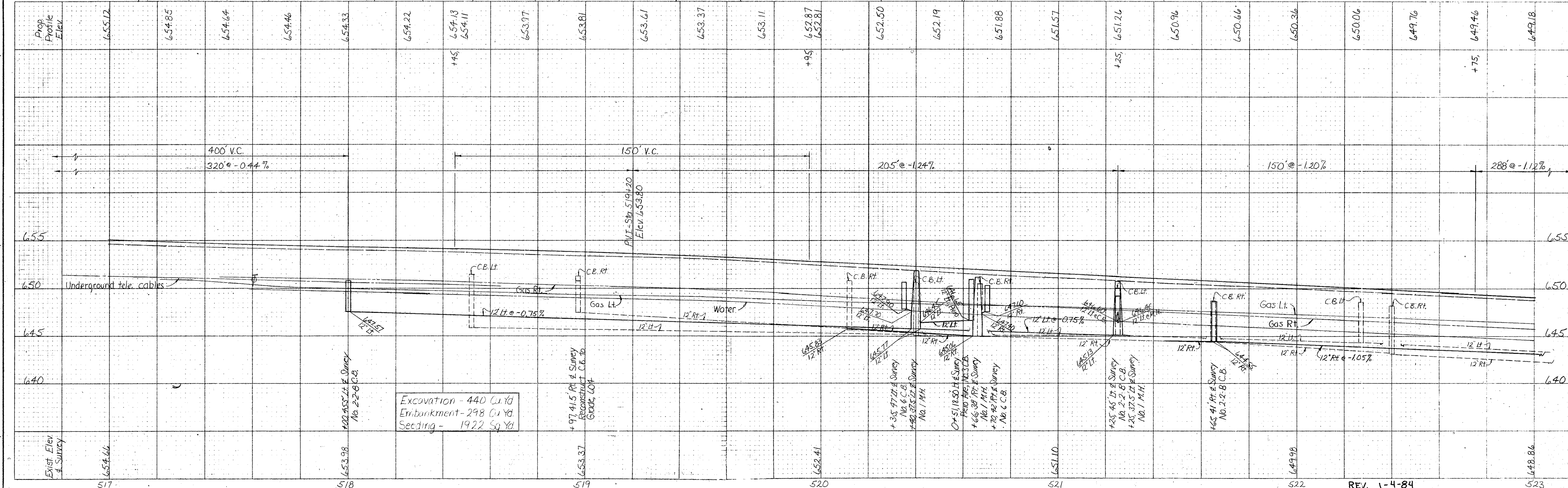
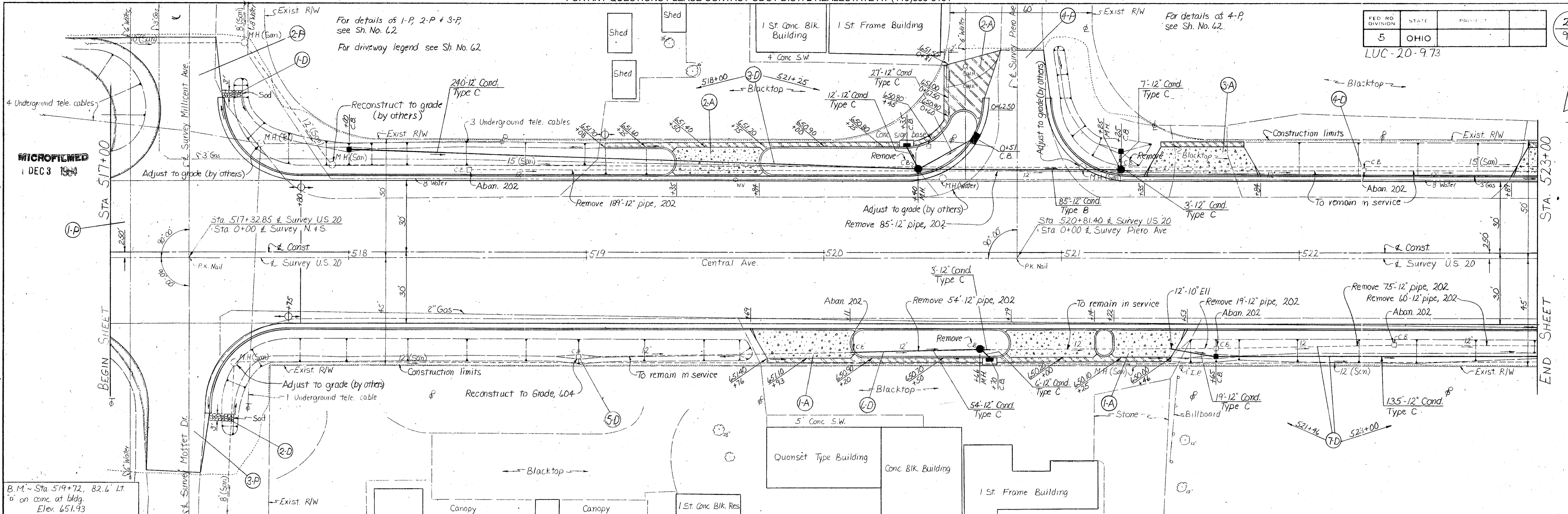


Sta.	Prop. Profile Elev.	LT + RT Pavement Edge Elev.	Notes
511	661.50	661.50	
512	661.68	661.68	
513	661.55	661.55	
514	661.34	661.34	
515	658.33	658.33	
516	656.25	656.25	
517	654.66	654.66	

Sta.	Prop. Profile Elev.	LT + RT Pavement Edge Elev.
513.41	661.61	661.14
514.00	660.83	660.36
515.00	660.10	659.63
516.00	659.40	658.93
517.00	658.76	658.29
518.00	658.15	657.68
519.00	657.59	657.12
520.00	657.07	656.60
521.00	656.57	656.12
522.00	656.16	655.69
523.00	655.77	655.22
524.00	655.42	654.76
525.00	655.12	654.46

Station	Grade	Notes
513+41 to 516+00	-3.20%	200' VC
516+00 to 517+00	-0.44%	320' VC

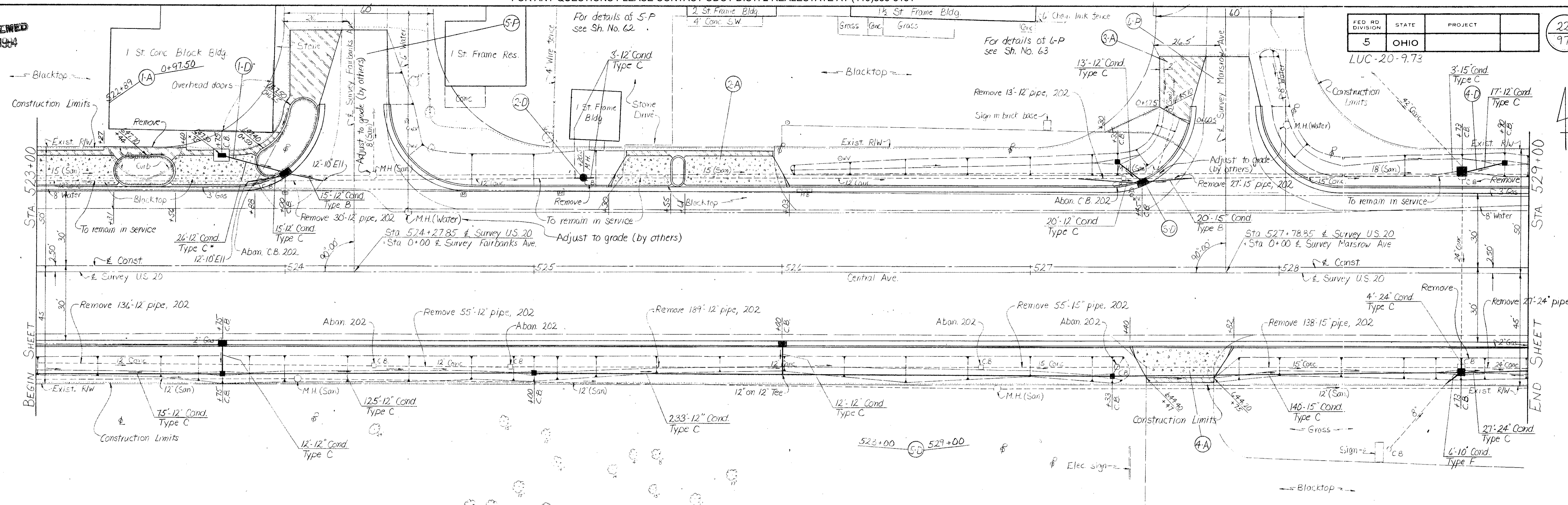
Excavation - 65 Cu Yd
 Embankment 375 Cu Yd
 Seeding - 3099 Sq Yd



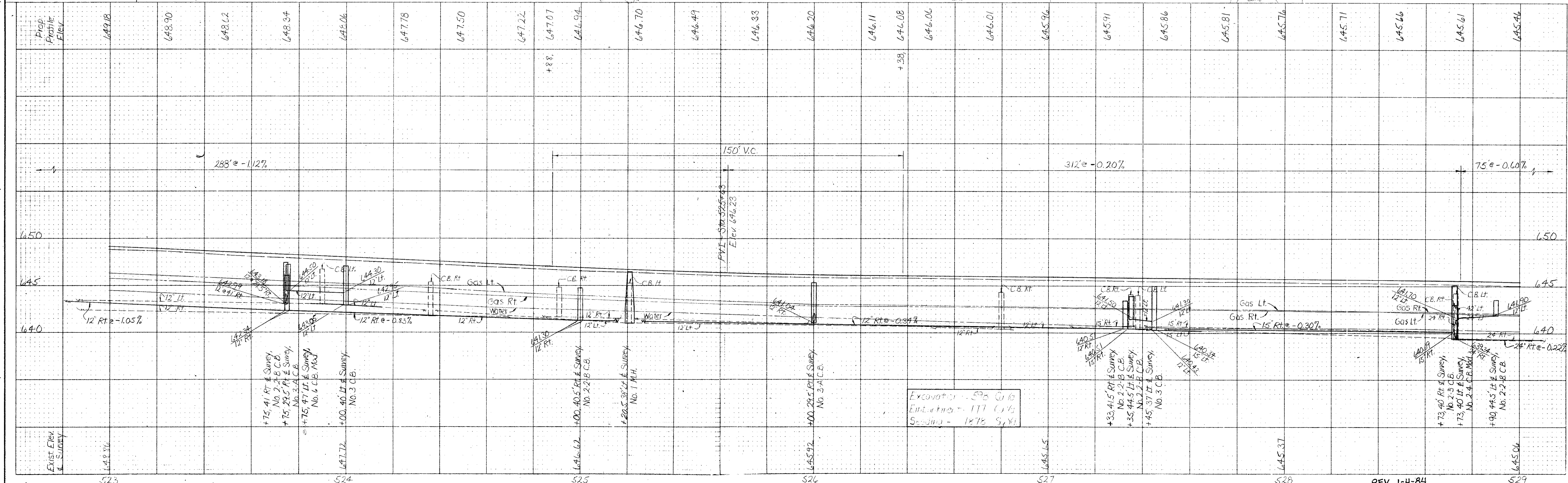
Excavation - 440 Cu Yd
 Embankment - 298 Cu Yd
 Seeding - 1922 Sq Yd

MICROFILMED
DEC 3 1984

FED RD DIVISION	STATE	PROJECT	22
5	OHIO	LUC-20-9.73	97



B.M. ~ Sta. 523+76, 92' Rt
NE Corner conc sidewalk
Elev 648.85
* 706.01 Class 3 706.02 706.08ES, 707.13



Excavation - 500 C.B.
Elevation - 117 C.B.
Sounding - 1876 S.Y.

+33.415 RT & Survey
No. 2-2-B C.B.
+35.445 RT & Survey
No. 2-2-B C.B.
+45.37 RT & Survey
No. 3 C.B.

+73.40 RT & Survey
No. 2-5 C.B.
+73.40 RT & Survey
No. 2-4 C.B. Mod.
+90.445 RT & Survey
No. 2-2-B C.B.

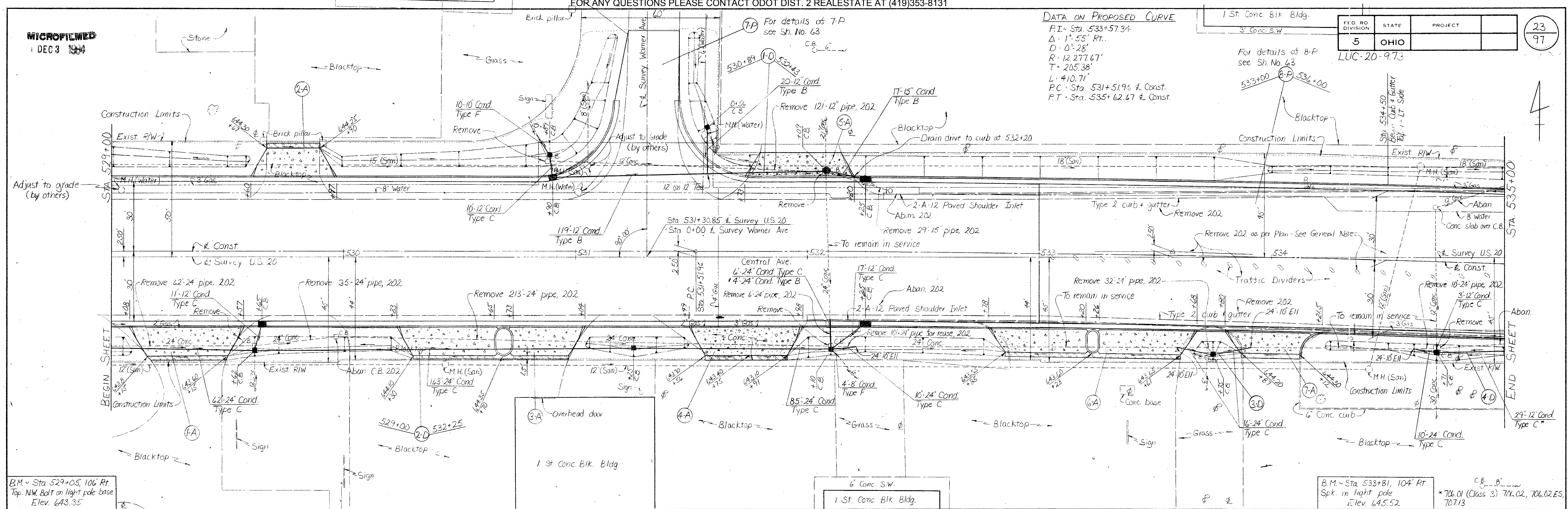
MICROFILMED
DEC 3 1984

FOR ANY QUESTIONS PLEASE CONTACT ODOT DIST. 2 REAL ESTATE AT (419)353-8131

DATA ON PROPOSED CURVE
 P.I. Sta. 533+57.34
 Δ = 1° 55' Rt.
 D = 0° 28'
 R = 12,277.67'
 T = 205.38'
 L = 410.71'
 P.C. Sta. 531+51.96 ± Const.
 P.T. Sta. 535+62.67 ± Const.

FED. RD. DIVISION	STATE	PROJECT
5	OHIO	LUC-20-973

23
97



B.M. - Sta. 529+05, 106' Rt.
 Top. NW. Bolt on light pole base
 Elev. 643.35

B.M. - Sta. 533+81, 104' Rt.
 Spk. in light pole
 Elev. 645.52

Prop. Profile Elev.	645.46	645.31	645.16	645.11	645.06	645.01	644.96	644.91	644.86	644.81	644.76	644.71	644.66	644.61	644.70	644.79	644.88	644.97	645.06	645.15	645.24	645.33	645.40	645.47	645.54	
Prop. Point Elev. Right																								644.81	644.86	644.81
	75' @ -0.60%		275' @ -0.20%										200' @ +0.36%			125' @ +0.28%										
Exist. Elev. & Survey	645.06				644.74		644.44						644.20			644.68			645.04				645.25			
	529				530		531					532			533			534				535				

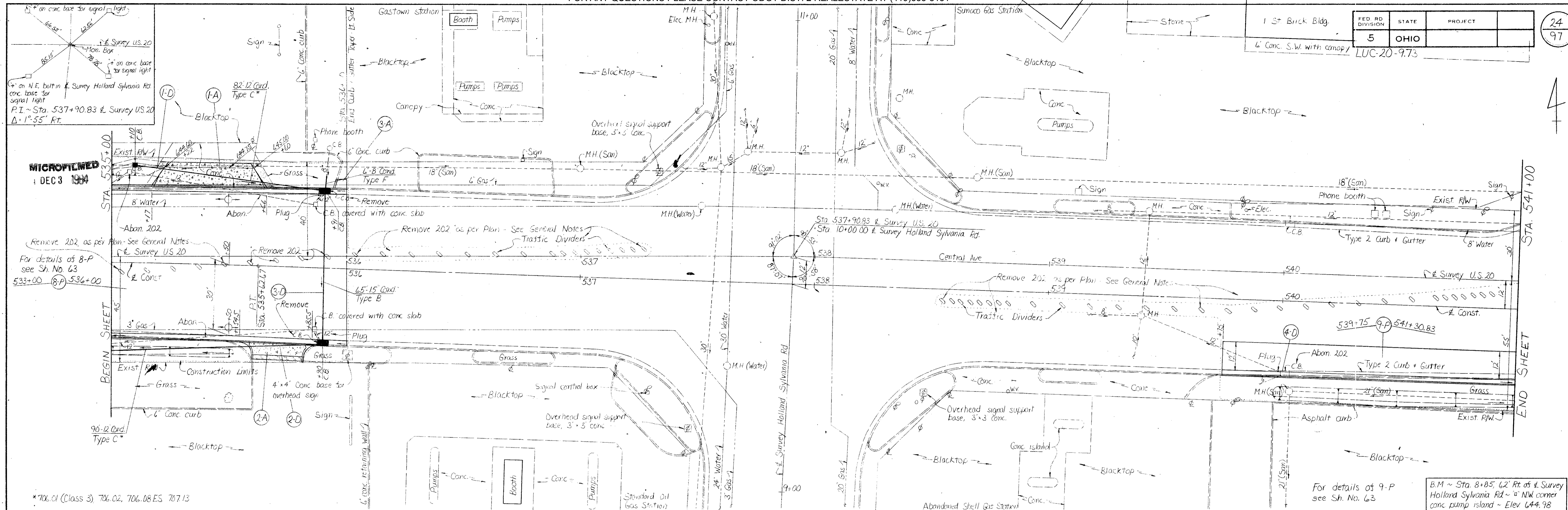
EXPLANATION - 505 S.I.T.
 ENLARGEMENT - 2" = 1'
 SCALED - 1/4" = 1'

STA. 529+00 TO STA. 535+00

REV. 1-4-84

FED. RD. DIVISION	STATE	PROJECT
5	OHIO	LUC-20-9.73

24
97



MICROFILMED
DEC 3 1988

* 706.01 (Class 3), 706.02, 706.08 ES, 707.13

For details of 9-P see Sh. No. 63
B.M. ~ Sta. 8+85, 62' Rt. of Survey Holland Sylvania Rd ~ 10' NW corner conc. pump island ~ Elev. 644.98

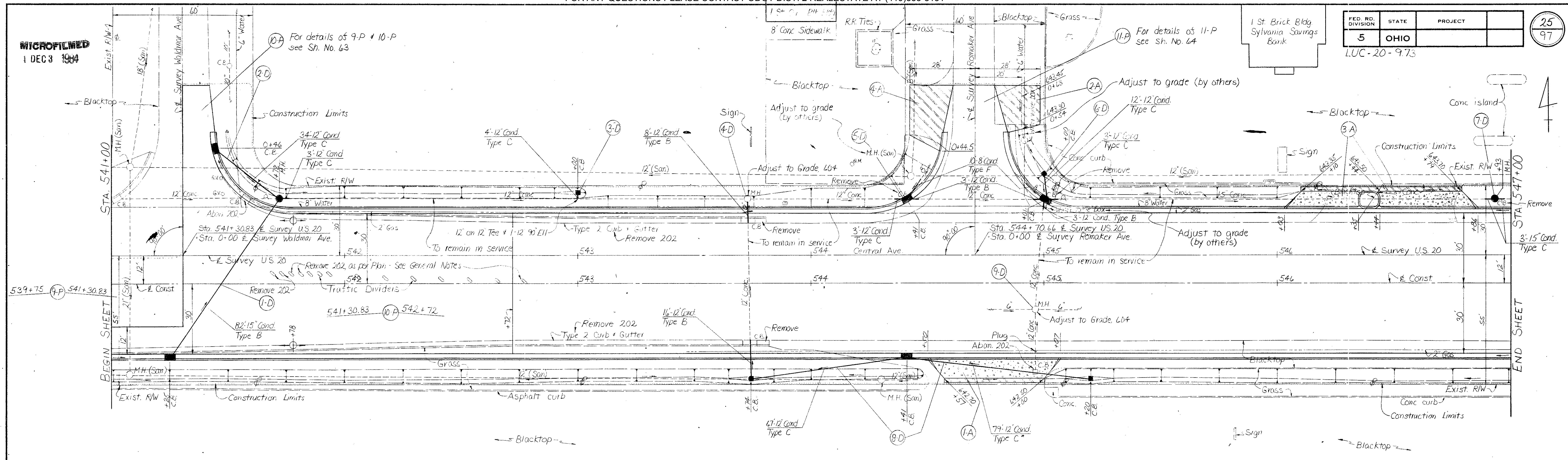
Prop. Profile Elev.	Prop. Point Edge Elev. 12:11	Prop. Point Edge Elev. 12:11	125' @ +0.28%		+90'		150' @ -0.44%						
645.54	644.88	644.95	645.02	644.94	644.90			644.86	644.75	644.64	644.53	644.42	644.31
645.61													
645.68													
645.61													
644.92													
644.90													
645.61													
645.86													
645.86													
645.06													
645.61													
645.23													
645.25													
645.55													
645.86													
646.06													
645.61													
645.23													
644.89													

3016 A

MICROFILMED
1 DEC 3 1984

FED. RD. DIVISION	STATE	PROJECT	25 97
5	OHIO		

LUC-20-9.73



B.M. - Sta 542+37, 122' Rt.
NE Corner conc. light pole base
Elev. 643.38

* 706.01 (Class 3), 706.52, 706.58 ES, 707.13

Station	Profile Elev.	Prop. Pavt. Edge Elev. Right	Prop. Pavt. Edge Elev. Left	Grade	Notes
541	644.80	644.91	644.91	150' @ 0.44%	
542	644.44	644.21	644.21	53' @ 0.26%	
543	644.08	644.09	644.09	122' @ 0.45%	
544	643.58	644.00	644.00	141' @ 0.48%	
545	643.49	644.04	644.04	327' @ 0.28%	
546	643.84	644.11	644.11		
547	644.12	644.51	644.51	150' VC	

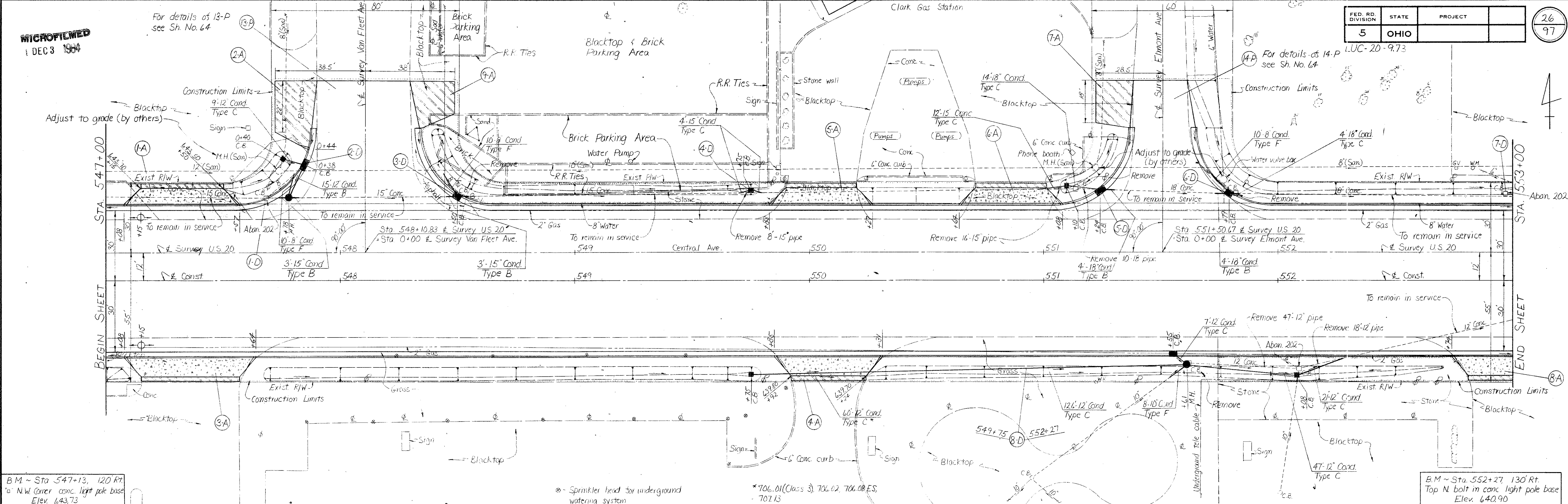
Station	Profile Elev.	Prop. Pavt. Edge Elev. Right	Prop. Pavt. Edge Elev. Left	Grade	Notes
541	644.80	644.91	644.91	150' @ 0.44%	
542	644.44	644.21	644.21	53' @ 0.26%	
543	644.08	644.09	644.09	122' @ 0.45%	
544	643.58	644.00	644.00	141' @ 0.48%	
545	643.49	644.04	644.04	327' @ 0.28%	
546	643.84	644.11	644.11		
547	644.12	644.51	644.51	150' VC	

MICROFILMED
DEC 3 1984

FED. RD. DIVISION	STATE	PROJECT	26
5	OHIO		97

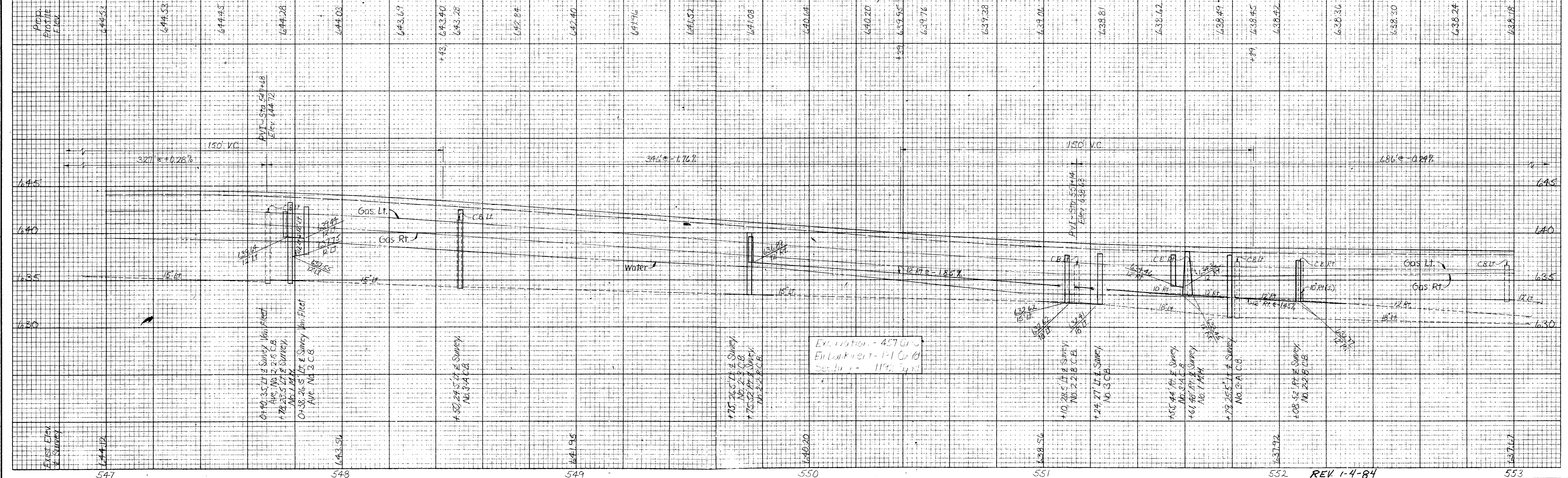
For details of 13-P see Sh. No. 64

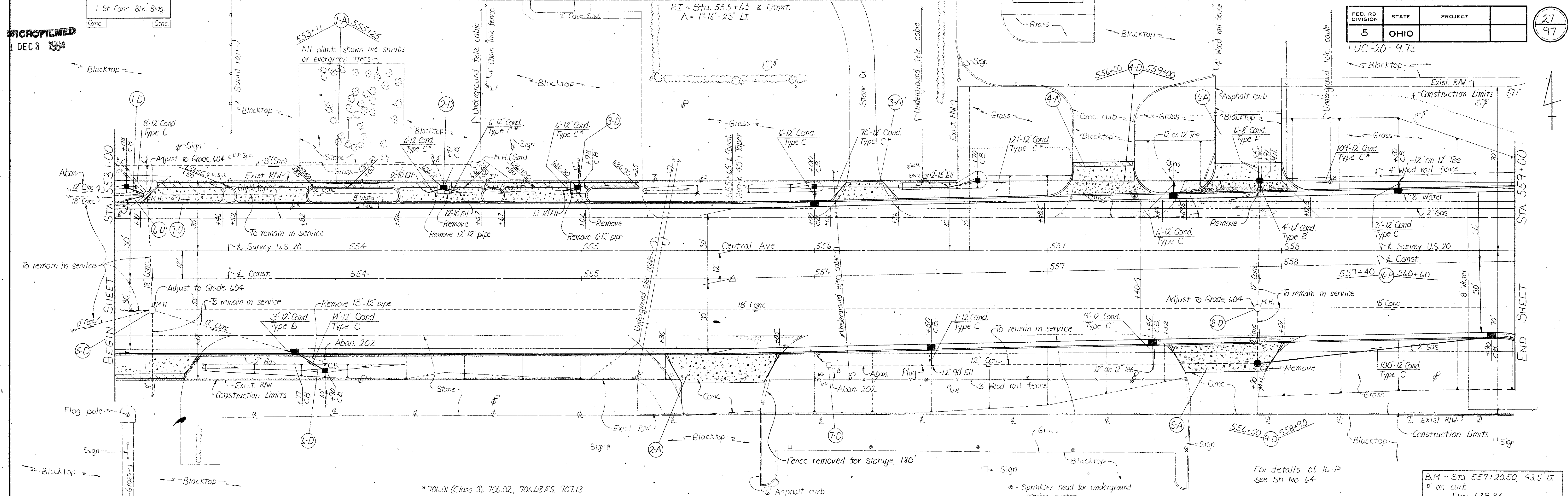
For details of 14-P LUC-20-9.73 see Sh. No. 64



B.M. ~ Sta 547+13, 120 Rt. to N.W. Corner conc. light pole base Elev. 643.73

B.M. ~ Sta. 552+27, 130 Rt. Top N. bolt in conc. light pole base Elev. 640.90

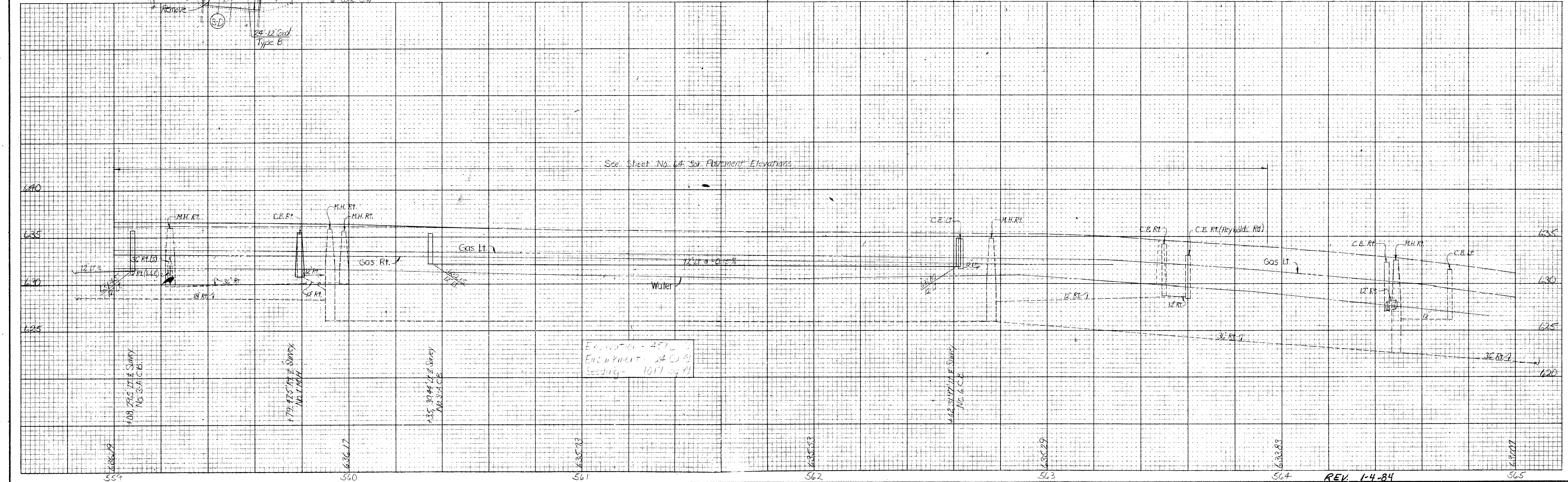
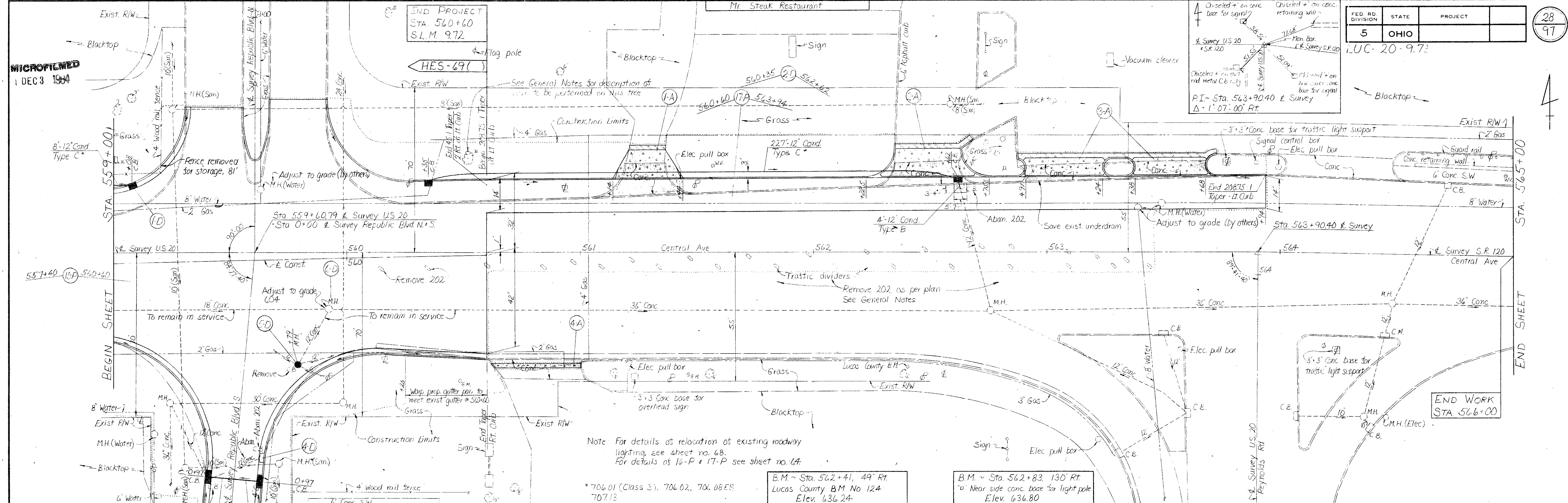




Prop. Profile Elev.	638.18	638.12	638.06	638.00	637.94	637.88	637.82	637.76	637.70	637.64	637.58	637.52	637.46	637.40	637.34	637.28	637.22	637.16	637.10	637.04	636.98	636.92	636.86	636.80	636.74	636.68	636.62	636.56	636.50
Profile																													
Grade																													
Vertical Curve																													
Excavation																													
Construction																													
Notes																													

FED. RD. DIVISION	STATE	PROJECT	
5	OHIO		

28
97



MICROFILMED
DEC 3 1984

Chiseled + on conc base for signal
Chiseled + on conc retaining wall
Chiseled + on conc base for traffic light support
Chiseled + on conc base for light pole

LUC-20-9.72

END WORK
STA 566+00

REV. 1-4-84

STA. 559+00 TO STA. 565+00