

R305L

FOR ANY QUESTIONS PLEASE CONTACT ODOT DIST. 2 REALESTATE AT (419)353-8131

FED. RD. DIVISION	STATE	PROJECT	FISCAL YEAR
2	OHIO		1948

1/7

STATE OF OHIO
DEPARTMENT OF HIGHWAYS
LUCAS COUNTY
ADAMS AND SYLVANIA TOWNSHIPS
LUC -20-10.68

LUCAS COUNTY
LUC -20-10.68

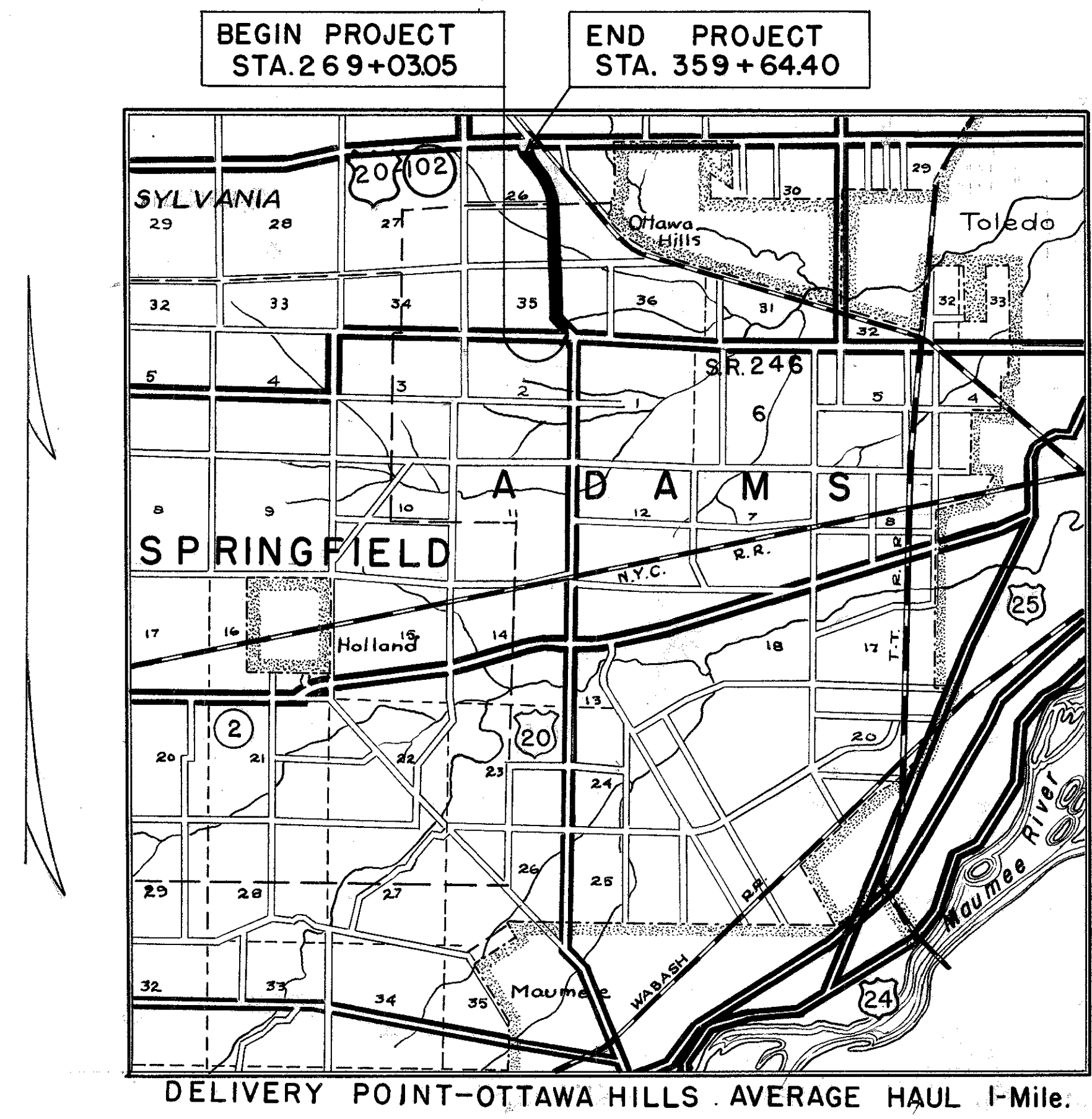
351

CONVENTIONAL SIGNS

COUNTY LINE	-----
TOWNSHIP LINE	-----
SECTION LINE	-----
CORPORATION LINE	-----
FENCE LINE	-x-x-x-x-
CENTER LINE	-----
POLE LINE	⊕ ⊕ ⊕ ⊕ ⊕
STEAM RAILROAD	-----
GUARD RAIL	-----

INDEX OF SHEETS

TITLE SHEET	1
TYPICAL SECTIONS	2
PLAN & PROFILE	4-7
GENERAL NOTES	3
PAVEMENT COMPUTATIONS	3
GENERAL SUMMARIES	3



LOCATION PLAN

PORTION TO BE IMPROVED	=====
STATE HIGHWAYS	=====
OTHER ROADS	=====
DETOURS	=====

SCALES

PLAN	1" = 100'
PROFILE HORIZONTAL	1" = 100'
PROFILE VERTICAL	1" = 5'
CROSS SECTIONS	

LINE DATA

BEGIN PROJECT	Sta. 269+03.50
END PROJECT	Sta. 359+64.40
STA. EQUATION	Sta. 344+58.05 = Sta. 344+99.39 = 41.34
GROSS LENGTH	9060.90 Lin.ft.
DEDUCT	41.34 Lin.ft.
NET LENGTH	9019.56 Lin.ft. or 1.708 Miles

The Standard Specifications of the State of Ohio, Department of Highways, including changes and Supplemental Specifications listed in the proposal shall govern this improvement.

The right of way necessary for this improvement will be provided by the State of Ohio.

I hereby approve these plans and declare that the making of this improvement will not require the closing to traffic of the Highway.

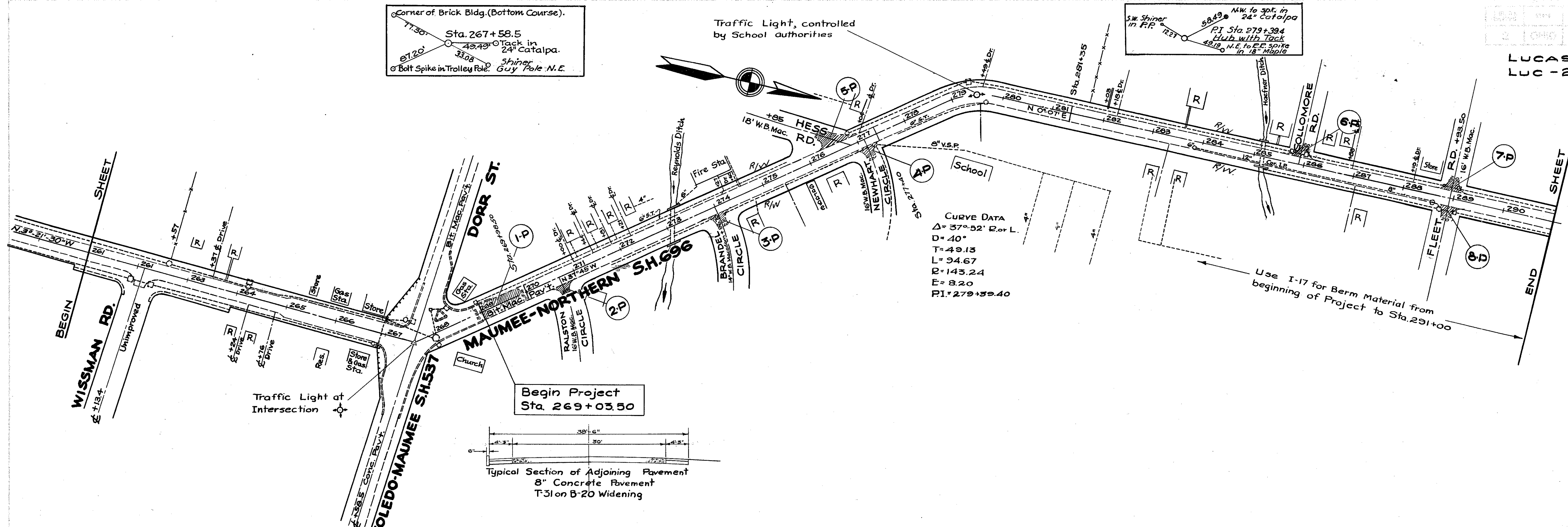
- Approved: Wesley B. Robinson
Date: 3-20-48 Division Deputy Director
- Approved: _____
Date: _____ Chief Engineer, Bureau of Maintenance
- Approved: J. R. Hoque
Date: 4-14-48 Chief Engineer, Bureau of Bridges & R.R. Crossings
- Approved: Henry J. Thormeyer
Date: 4/16/48 Chief Engineer, Bureau of Location & Design
- Approved: Frank M. Williams
Date: 4-16-48 First Asst. Director & Chief Engineer
- Approved: Earl L. Reeb
Date: 4-16-48 Director of Highways

SUPPLEMENTAL SPECIFICATIONS		STANDARD DRAWINGS	
None		G 8.07	2-1-47
		L-3	2-1-47

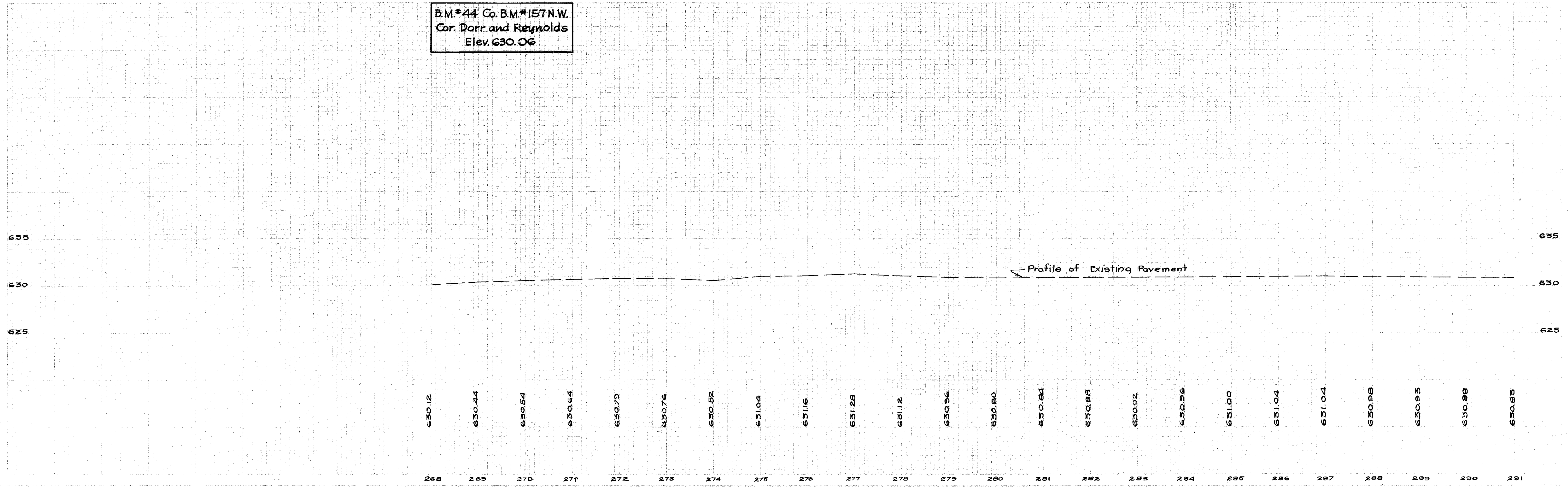
CONSTRUCTION BUREAU
JUN 28 1955
GROUND PHOTOLAB

351

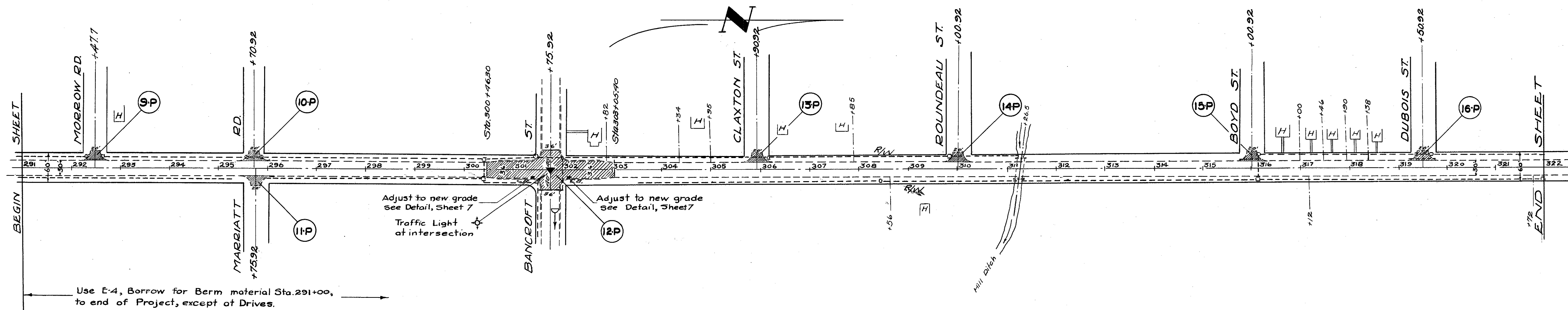
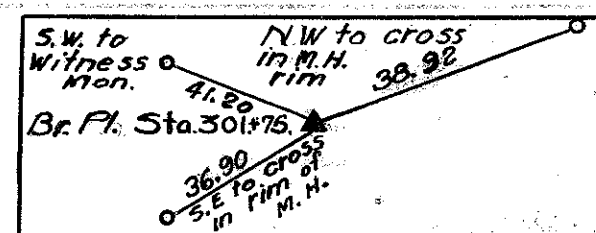
FILE NO.	LUCAS COUNTY USR. 20
SEC.	LUC-20-10.68
DATE OF LETTING:	
CONTRACT NO.	



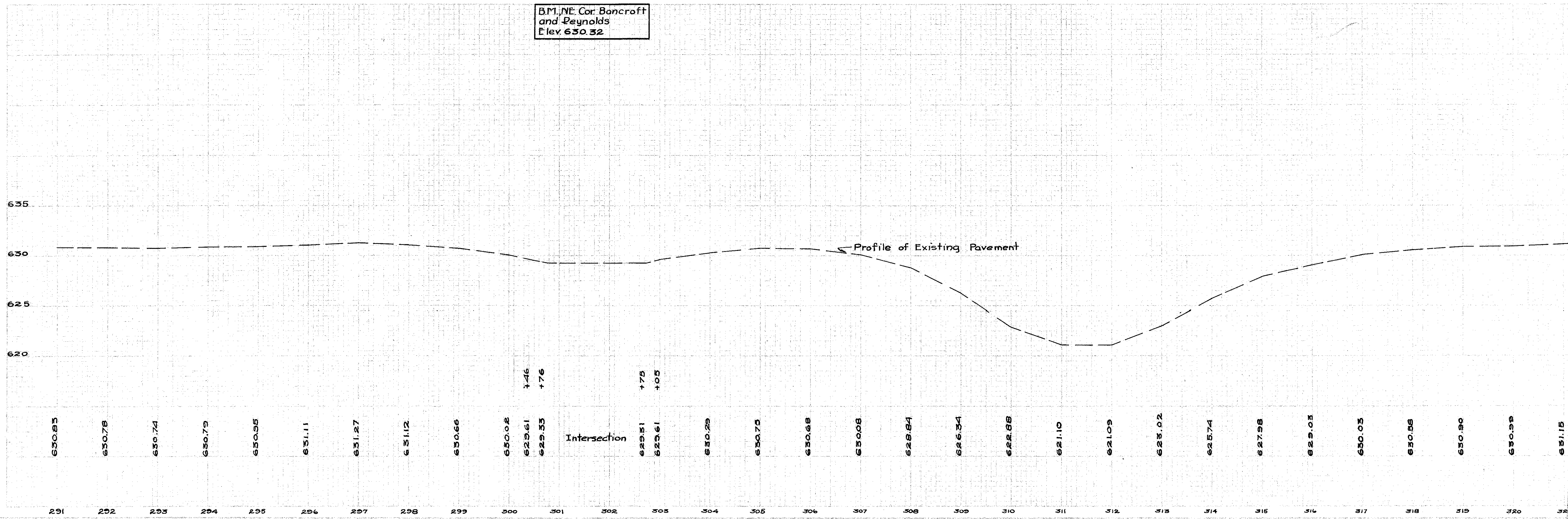
B.M.*44 Co. B.M.*157 N.W.
Cor. Dorr and Reynolds
Elev. 630.06



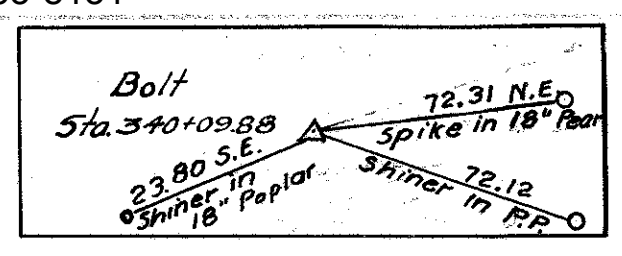
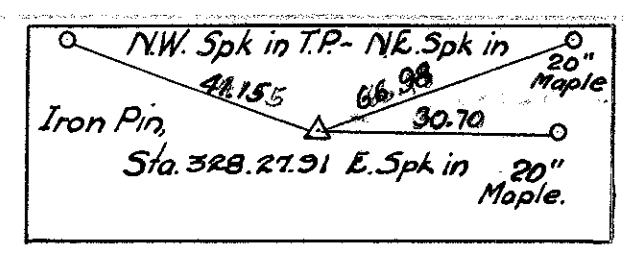
STA. 268+00 To STA. 291+00



B.M., NE. Cor. Bancroft and Reynolds
Elev. 630.32

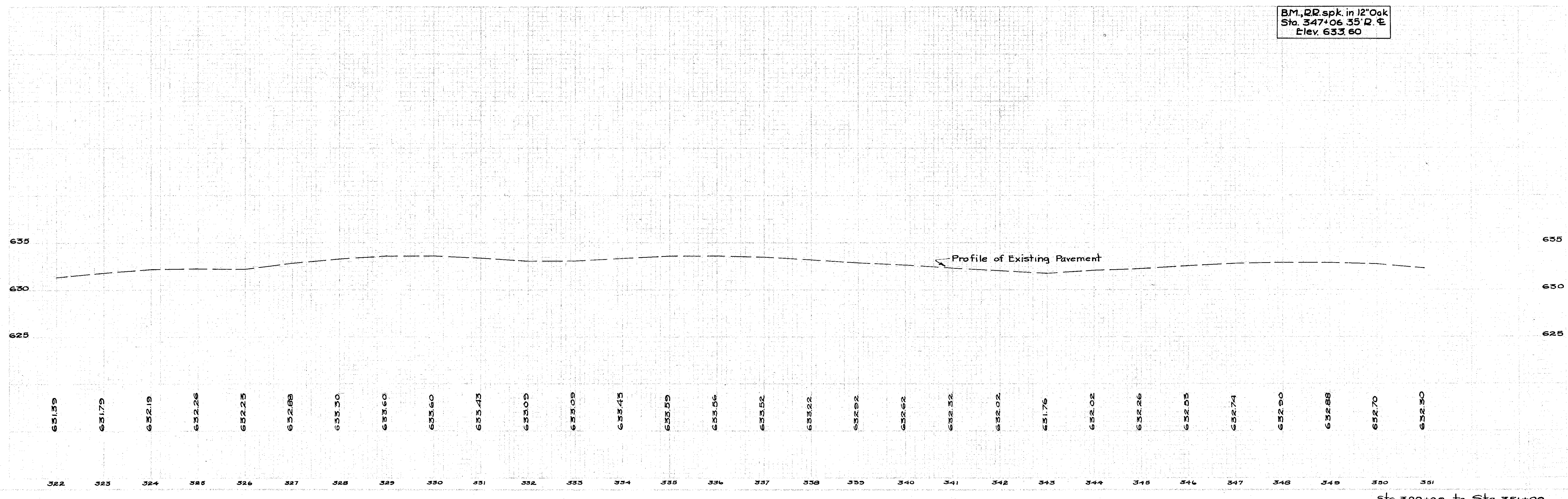
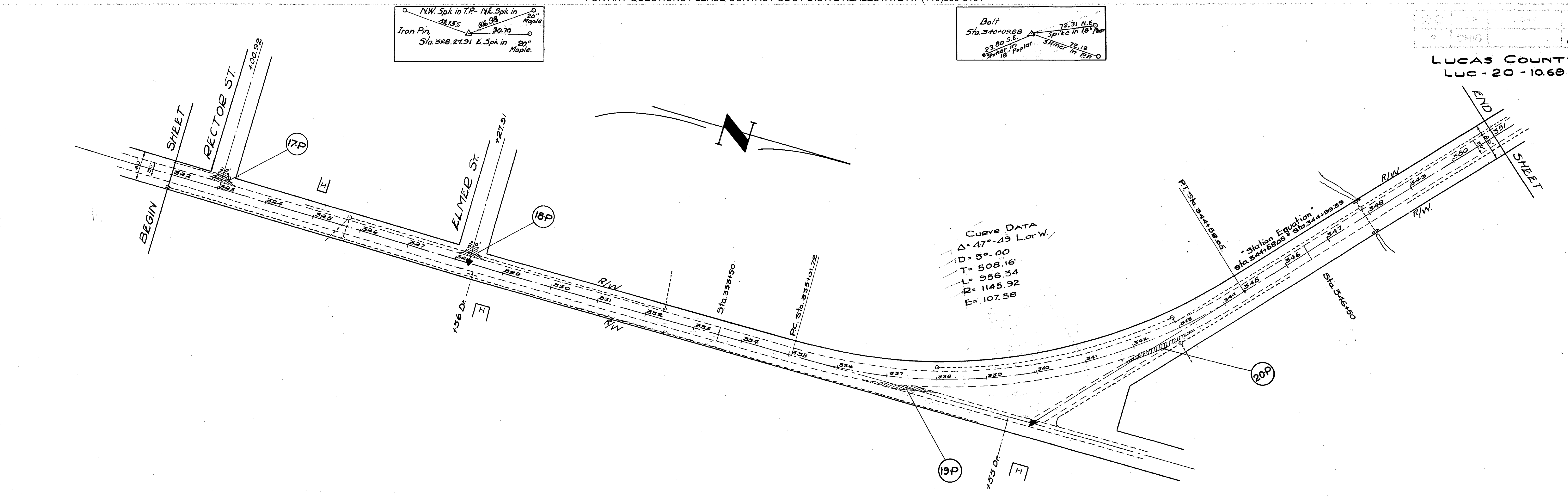


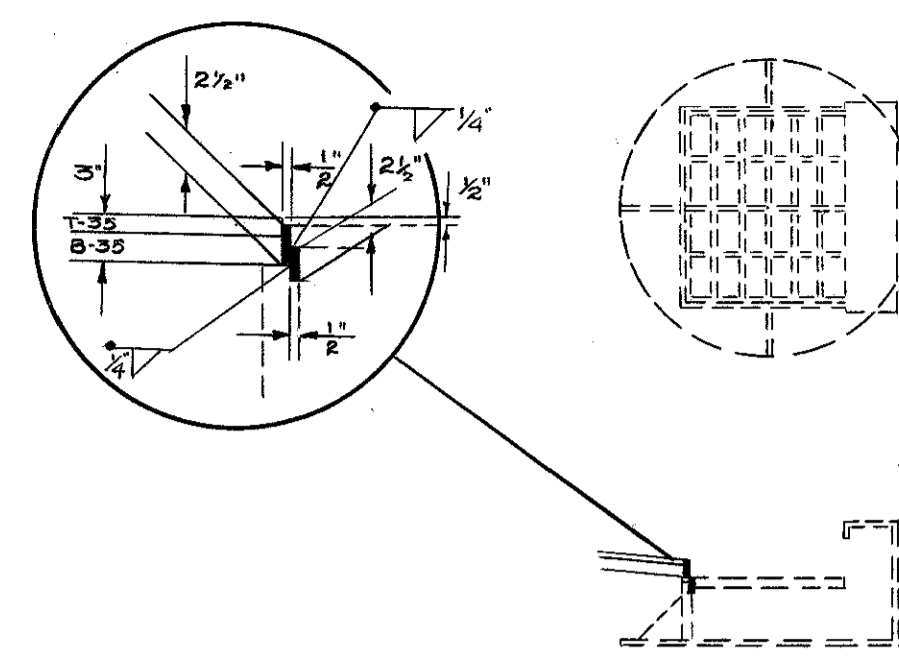
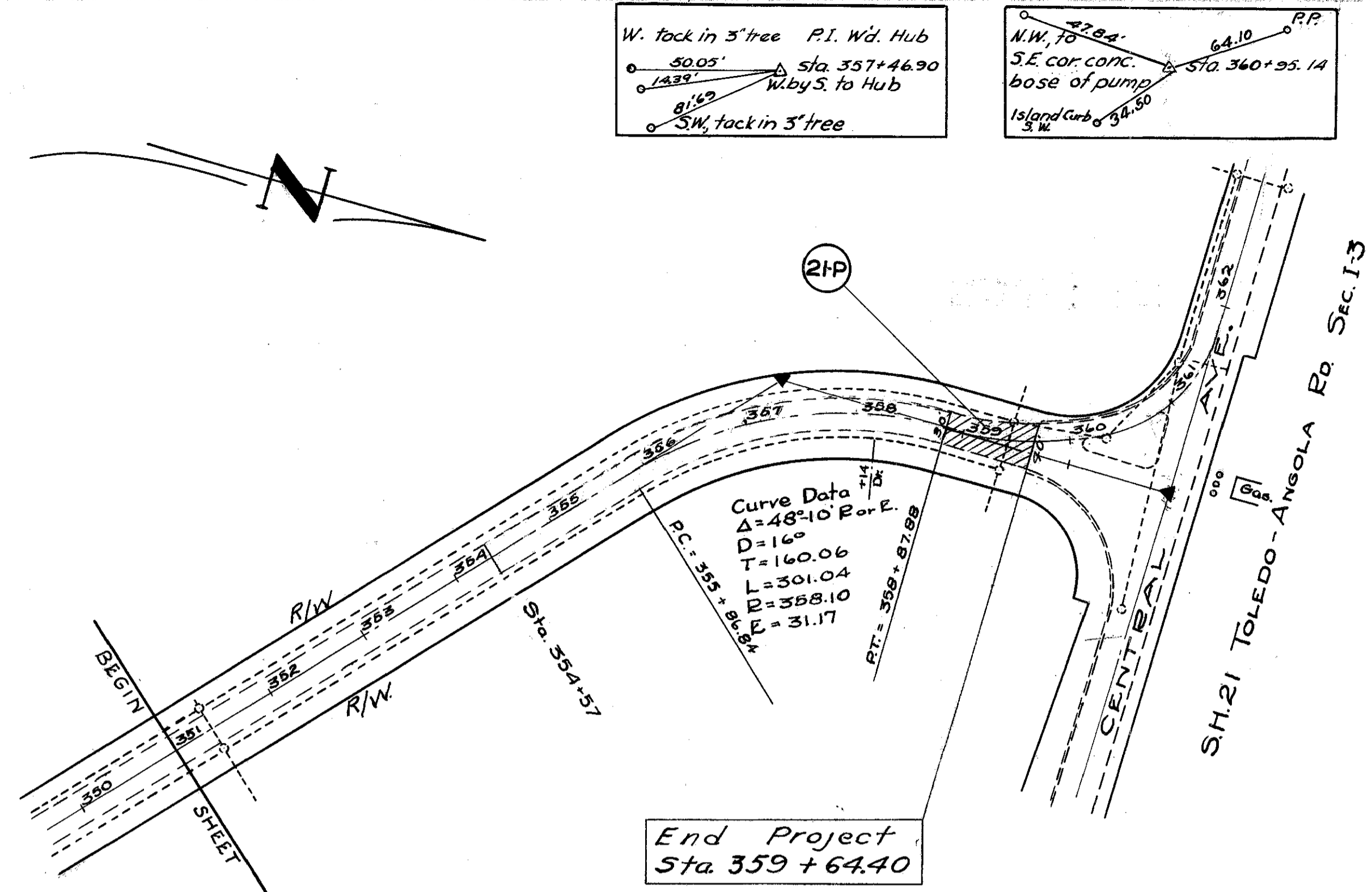
Sta. 291+00 to 322+00



CURVE DATA
 $\Delta = 47^{\circ} 49' \text{ L or W}$
 $D = 5^{\circ} 00'$
 $T = 508.16'$
 $L = 956.34'$
 $R = 1145.92'$
 $E = 107.58'$

BM, RR.spk. in 12" Oak
 Sta. 347+06.35 R. E.
 Elev. 633.60

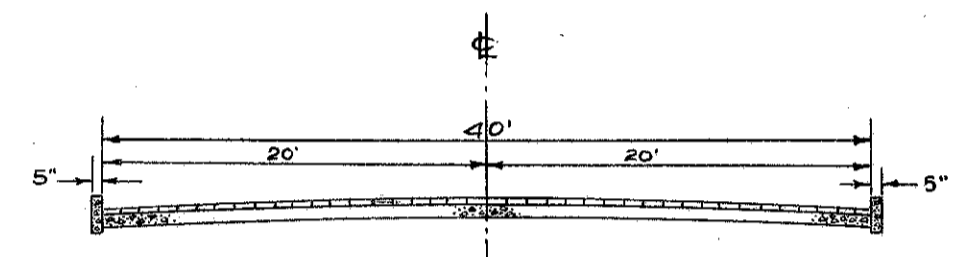




Detail Showing Method OF Raising Grate On Combined Curb and Gutter Inlets.

Braze 2 1/2" x 1/2" hot rolled mild steel strips on frame as shown, 3 sides.

Exposed surfaces of steel strips to be painted, after Brazing, using one coat of the same bituminous material as contained in the mix. Payment to be included in the Unit Price Bid for Item I-8 Inlet. Grates adjusted to grade.



Typical Section of Adjoining Pavement
3-7-79 Concrete Base
3/4" Sand Cushion
3" Vitrified Brick
5x18" Stone Curb

