

LUCAS COUNTY  
S.H. 696 SEC. C & MAUMEE PT.  
R/W PLANS

1  
6

DATE - DRAWN BY  
REVISED 10-11-35 10-23-35  
LENGTH OF PROJECT • 5.51 MI.

**STATE OF OHIO  
DEPARTMENT OF HIGHWAYS  
RIGHT OF WAY PLAN  
MAUMEE-NORTHERN ROAD  
S.H. 696 SEC. C & MAUMEE PT.  
LUCAS COUNTY  
ADAMS TOWNSHIP & VILLAGE OF MAUMEE  
1934**

Scanned  
JUNE 1997

R-3020  
# 7  
C-41

C-41

Sta. 0+00  
Monument  
Δ=0°00'00"

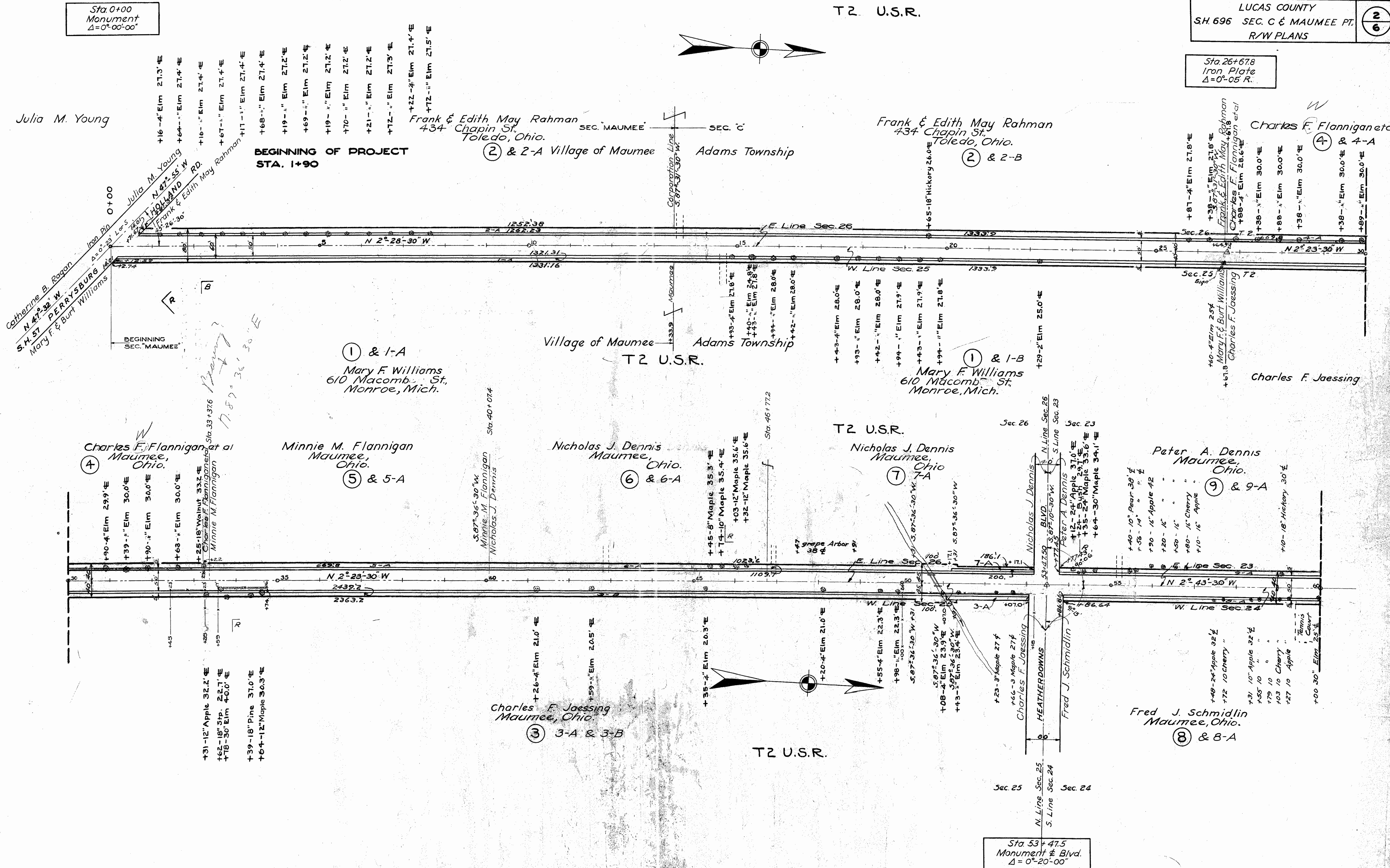
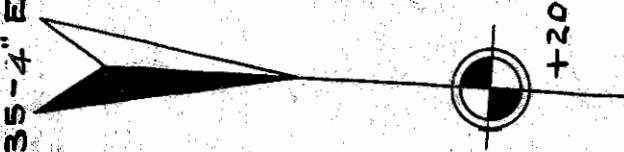
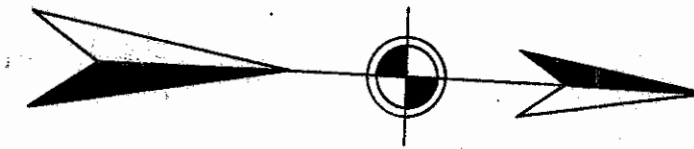
Sta. 26+678  
Iron Plate  
Δ=0°05'R.

Sta. 53+47.5  
Monument & Blvd.  
Δ=0°20'00"

T2 U.S.R.

T2 U.S.R.

T2 U.S.R.



Summary  
JUNE 1967

7.89° 36' 30" E

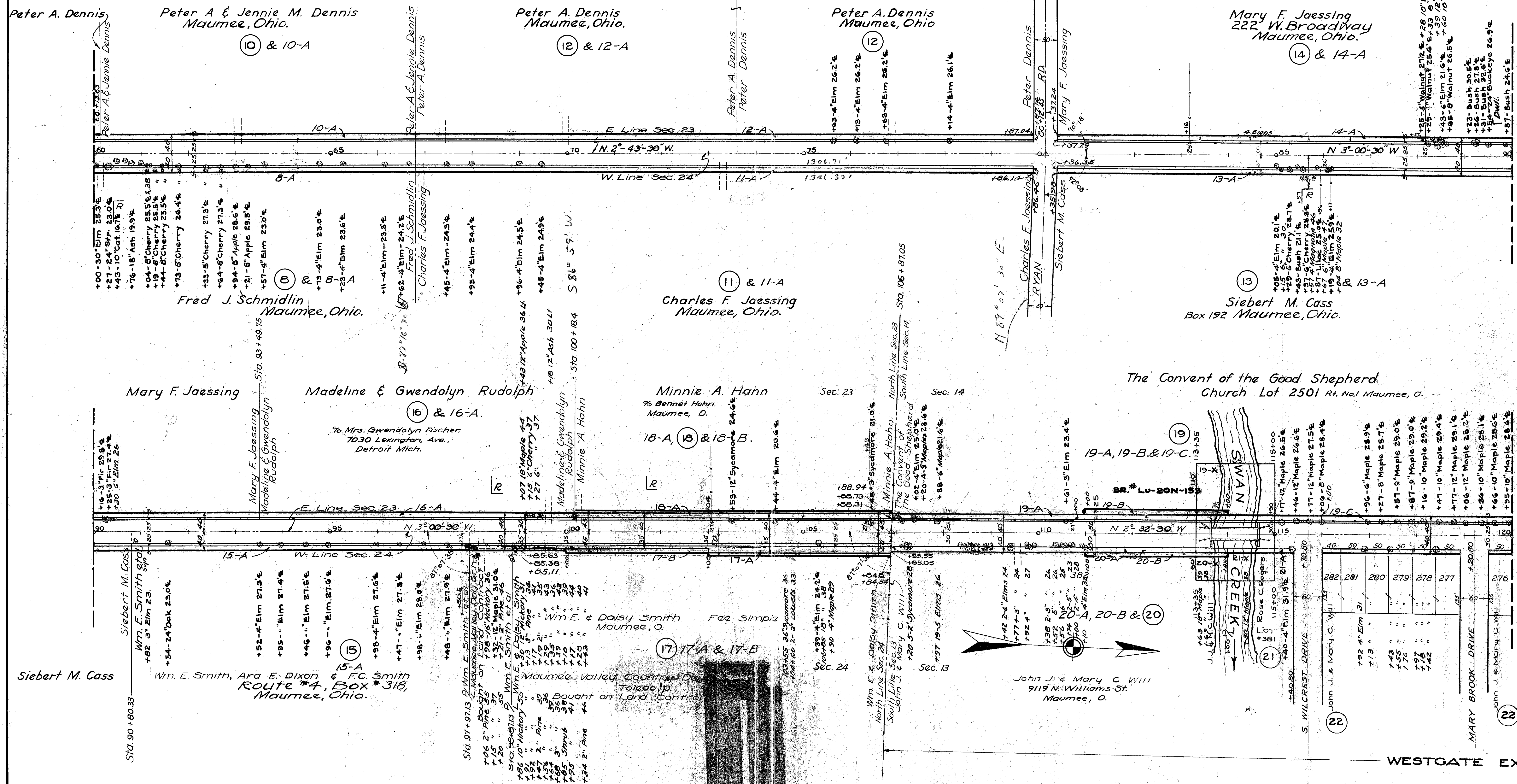
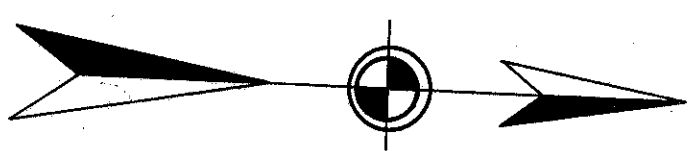
18

20

22

24

Sta. 80+12.45  
Monument & Intersection  
Δ=0°-17'-00"



Sta. 99+4.1  
Set R.R. Spike  
Δ=0°-00'-00"

Sta. 106+87.05  
Set R.R. Spike  
Δ=0°-28'-00"

WESTGATE EXTN.

SCANNED  
JULY 1997

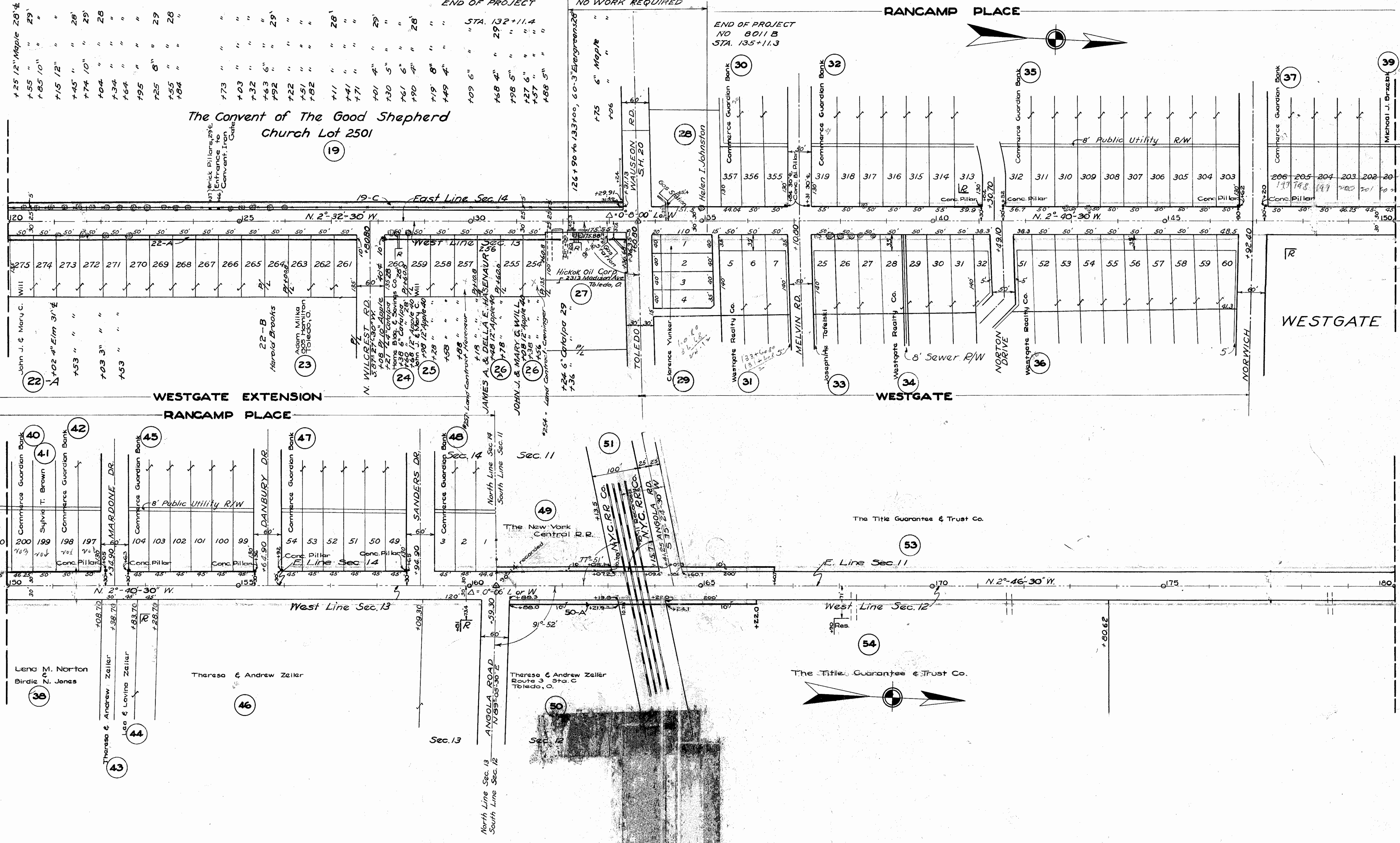
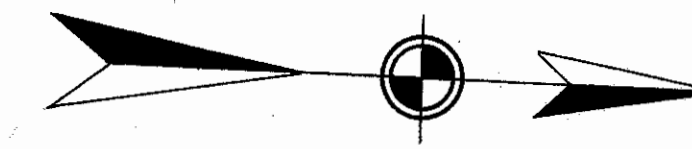
Sta. 124+37.64  
RR Spike &  
 $\Delta = 0^{\circ}-00'-00''$

Sta. 133+60.8  
Monument & S.H. 20  
 $\Delta = 0^{\circ}-08'-00''$

END OF PROJECT

NO WORK REQUIRED

RANCAMP PLACE



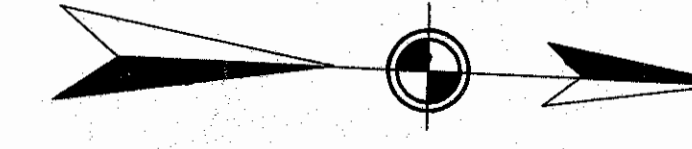
The Convent of The Good Shepherd  
Church Lot 2501

WESTGATE

WESTGATE EXTENSION  
RANCAMP PLACE

WESTGATE

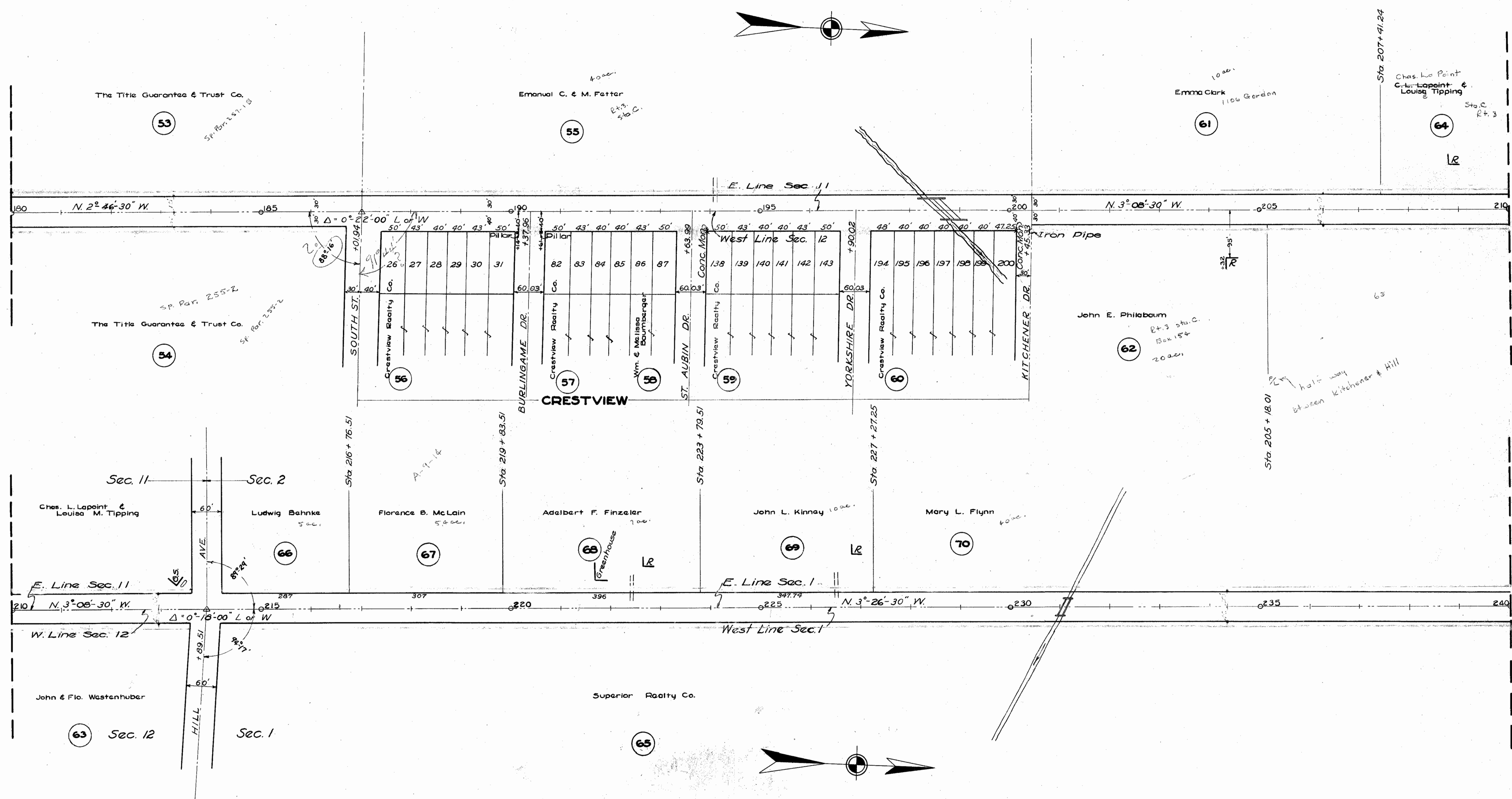
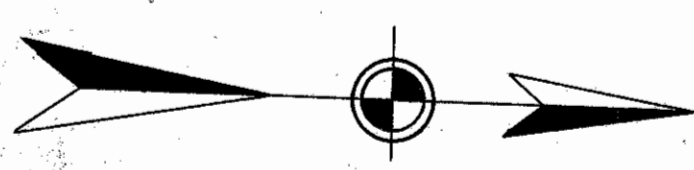
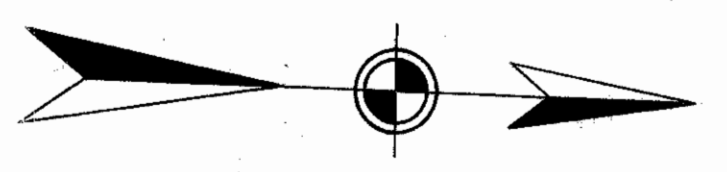
Sta. 160+59.3  
& Angola Rd.  
 $\Delta = 0^{\circ}-06'-00''$



Scanned June 1977

Sta. 187+01.94  
Monument & South St.  
 $\Delta = 0^\circ - 22' - 00''$

Sta. 213+89.5  
Monument & Hill Ave.  
 $\Delta = 0^\circ - 18' - 00''$

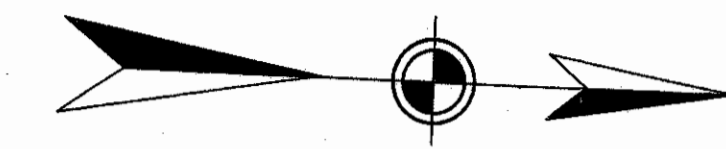


50' 142.7

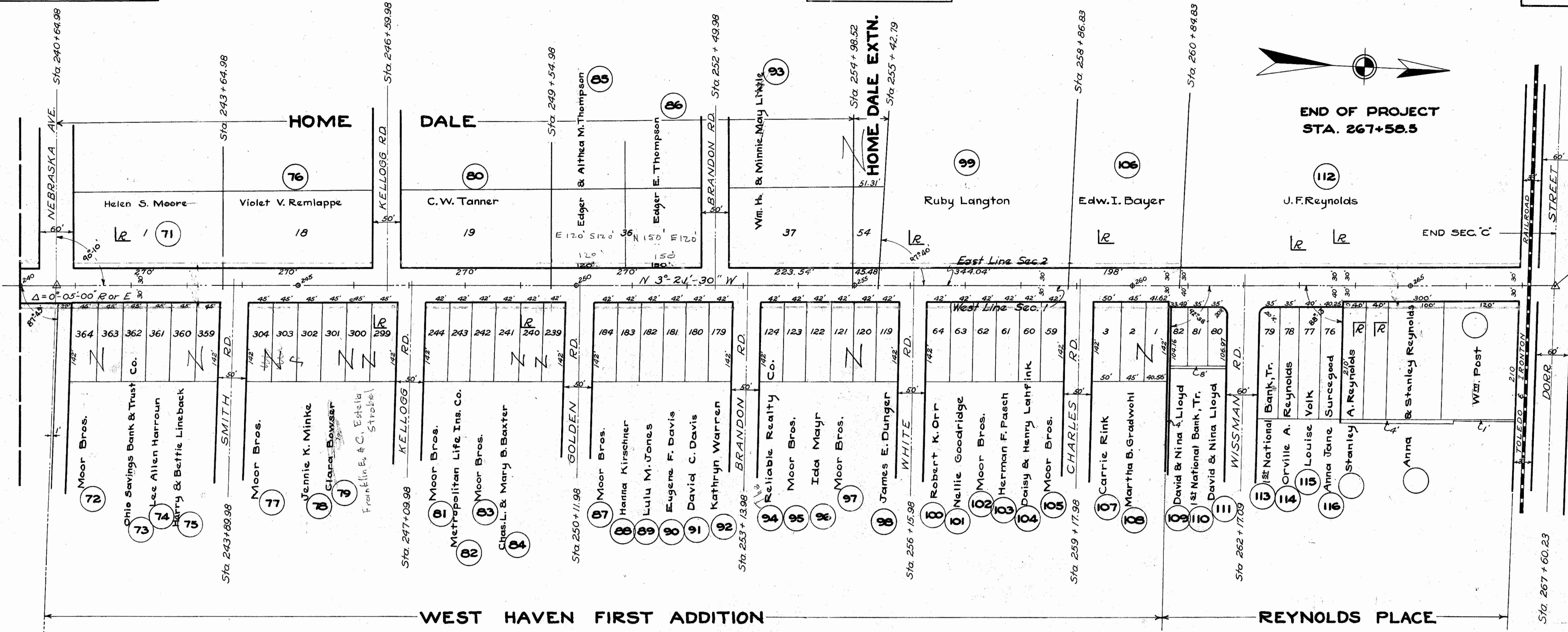
Sta. 240+64.98  
Monument & Nebraska Ave.  
Δ=0°-05'-00"

Sta. 255+43.1  
Iron Pipe on E  
Δ=0°-00'-00"

LUCAS COUN  
S.H. 696 SEC. C & M,  
R/W PLAN



END OF PROJECT  
STA. 267+58.5



FOR ANY QUESTIONS PLEASE CONTACT ODOT DIST. 2 REALSTATE AT (419)853-8131

CHECKED		REVISED	
By	Date	By	Date
		R.E.P.	10-11-35
		R.E.P.	10-23-35

143