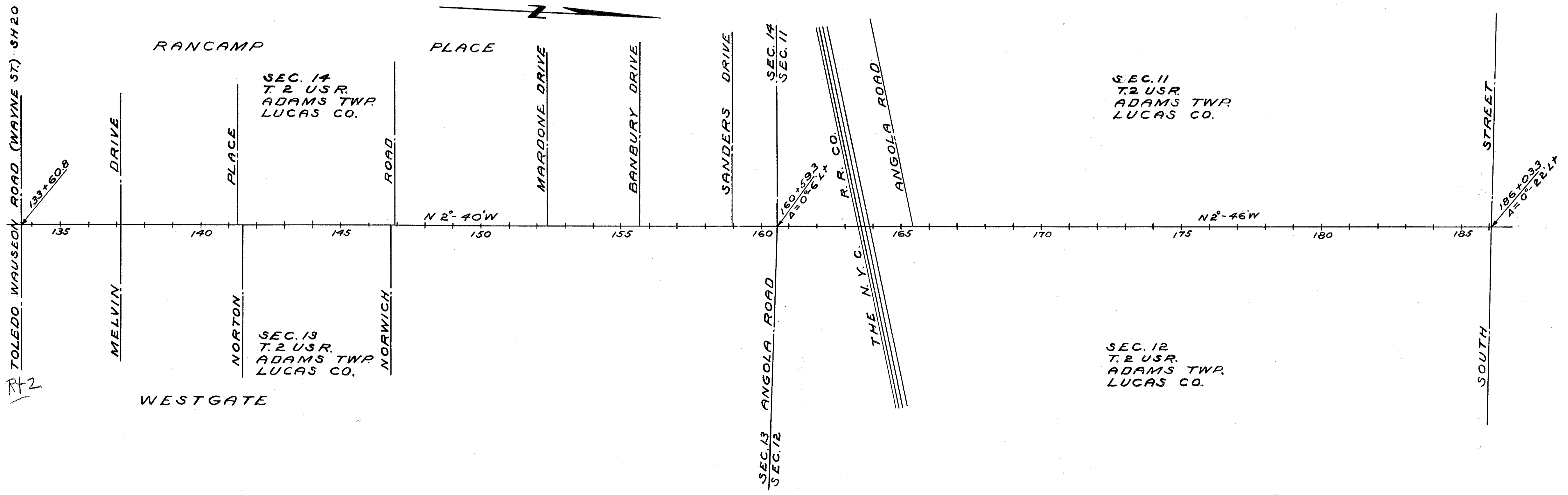
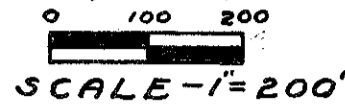


LOCATION PLAN LUC. 20-14.78 MAUMEE-NORTHERN ROAD 1949 DEPARTMENT OF HIGHWAYS - STATE OF OHIO



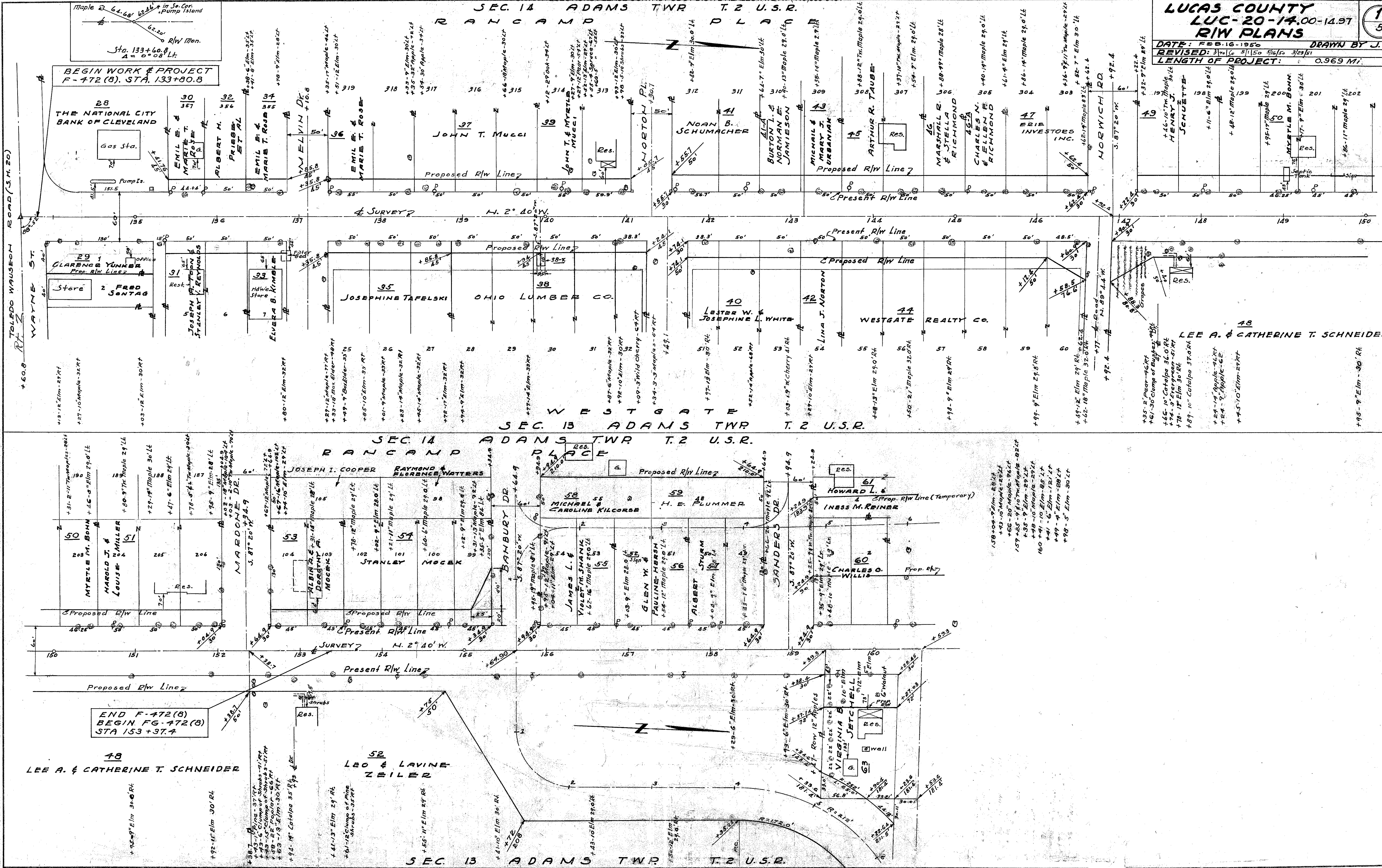
R-30208 #8 C-62

LUCAS COUNTY
LUC-20-14.00-14.97
R/W PLANS

DATE: FEB. 16, 1950
 REVISED: 3/15/50 3/16/50 3/23/51
 LENGTH OF PROJECT: 0.969 MI.

DRAWN BY J.S.

Checked June 1947



BEGIN WORK & PROJECT F-472 (B), STA. 133+60.8

END F-472 (B) BEGIN FG-472 (B) STA 153+97.4

SEC. 14
RAHCAMP PLACE

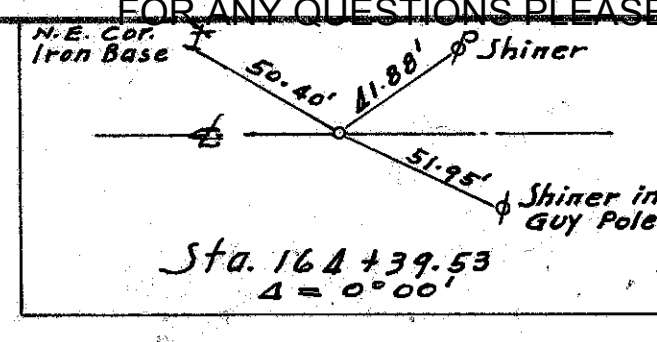
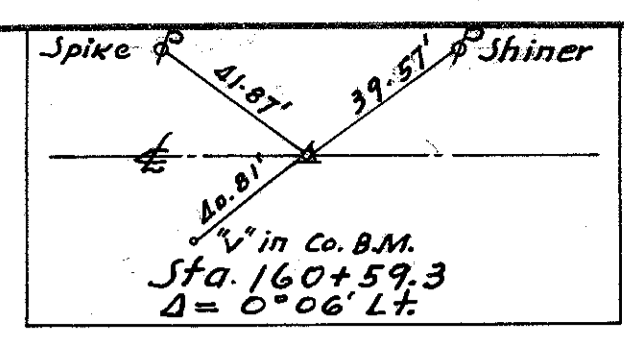
SEC. 11

ADAMS TWP T. 2 U.S.R.

LUCAS COUNTY
LUC-20-14.00-14.97
R/W PLANS

2
5

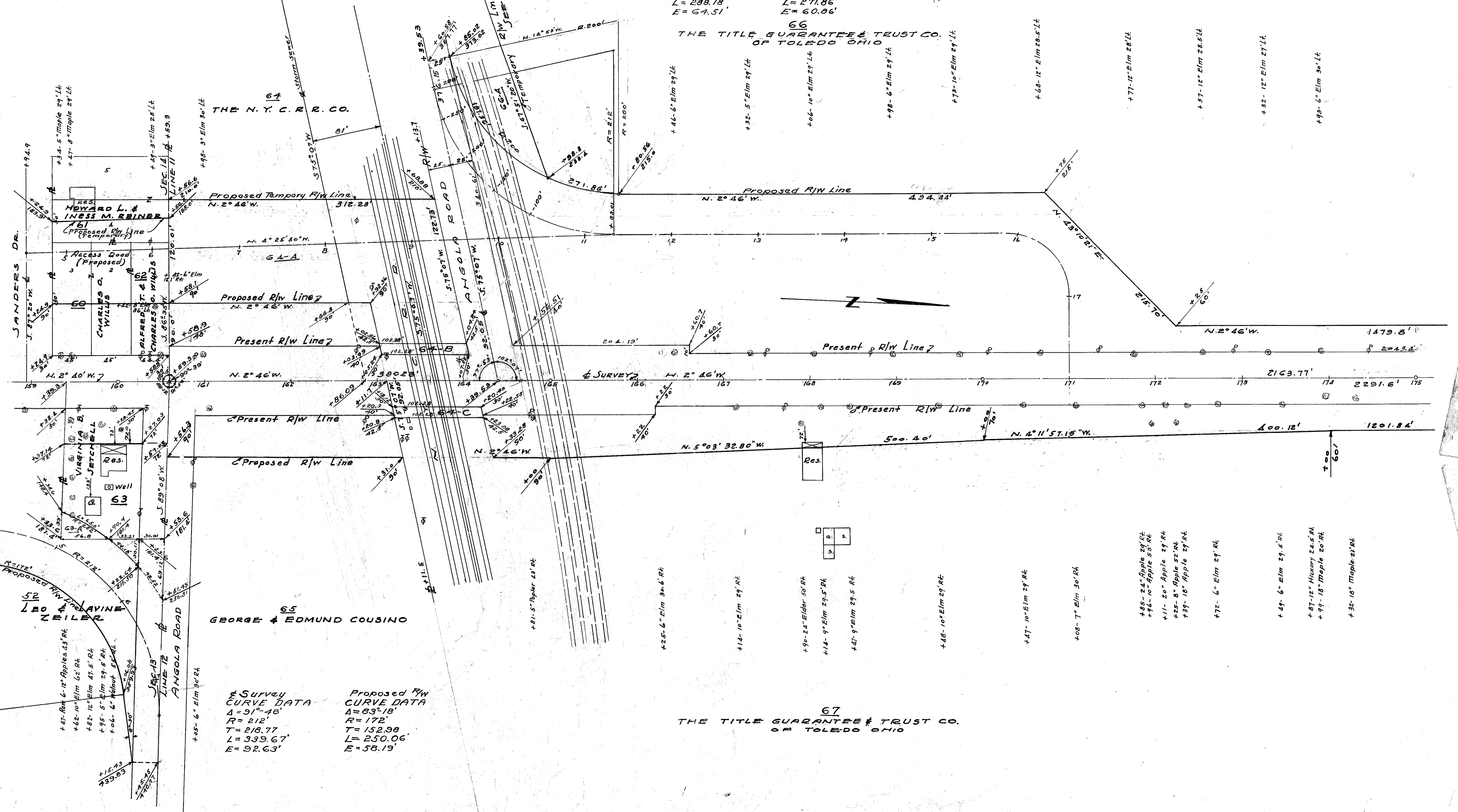
DATE: FEB. 16-1956 DRAWN BY J.S.
REVISED: 3/14/56 4/14/56 12/11/56 1/27/57 3/23/57 6-2-57
LENGTH OF PROJECT 0.969 MI.



Survey CURVE DATA
Δ = 77°53'
R = 212'
T = 171.32'
L = 288.18'
E = 64.51'

R/W Line CURVE DATA
Δ = 77°53'
R = 200'
T = 161.62'
L = 271.86'
E = 60.86'

66
THE TITLE GUARANTEE & TRUST CO.
OF TOLEDO OHIO



Survey CURVE DATA
Δ = 91°48'
R = 212'
T = 218.77'
L = 339.67'
E = 92.63'

Proposed R/W CURVE DATA
Δ = 83°18'
R = 172'
T = 152.38'
L = 250.06'
E = 58.19'

67
THE TITLE GUARANTEE & TRUST CO.
OF TOLEDO OHIO

SEC. 13

SEC. 12 ADAMS TWP T. 2 U.S.R.

Scanned
June 1997

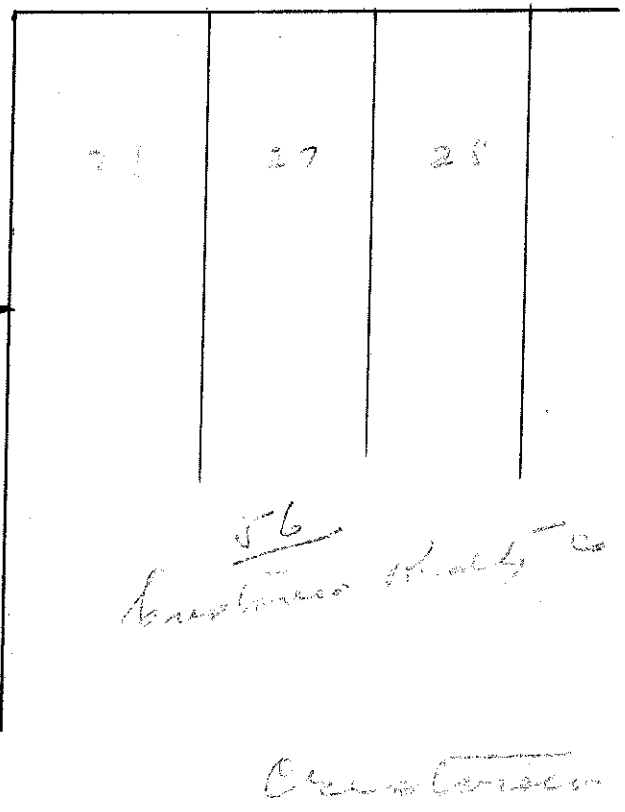
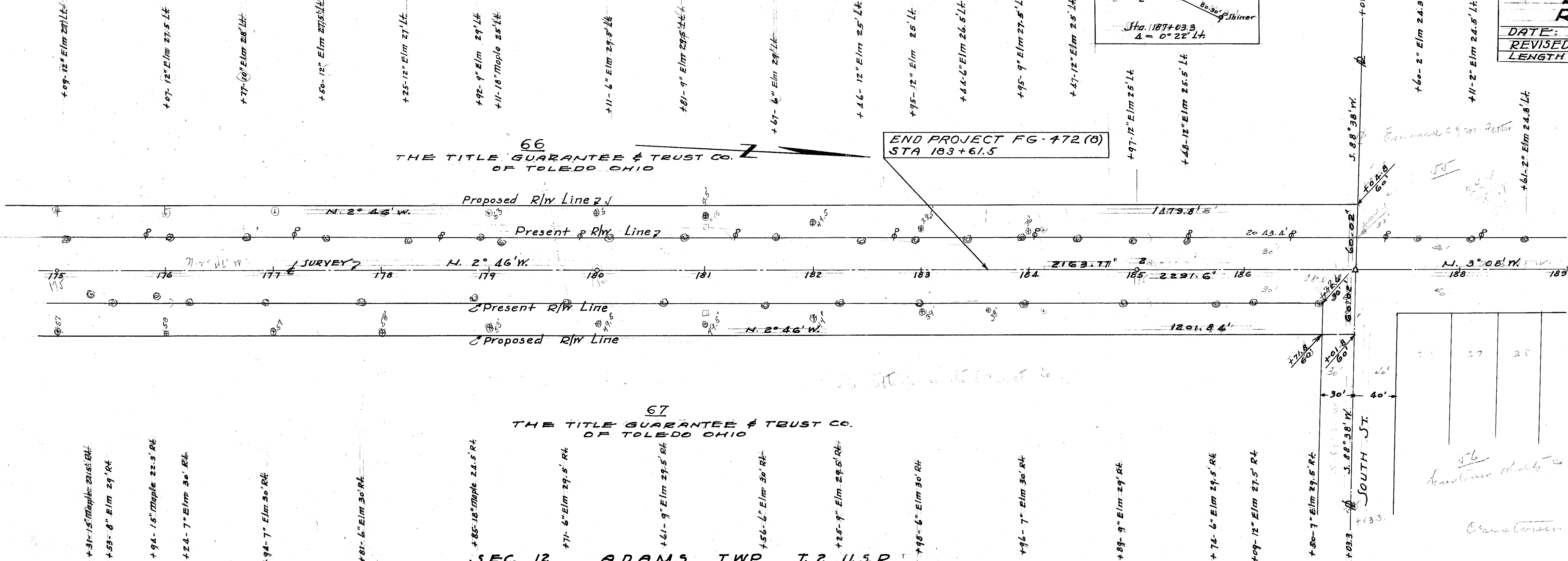
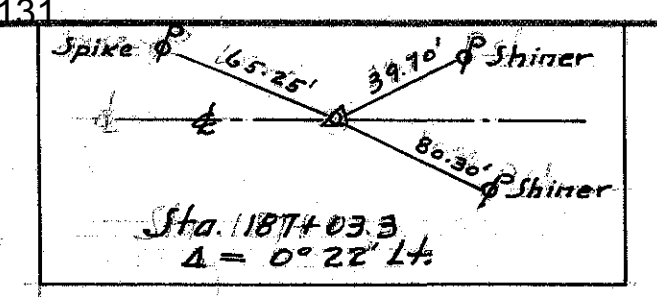
SEC. 11 ADAMS TWP. T. 2 U.S.R.

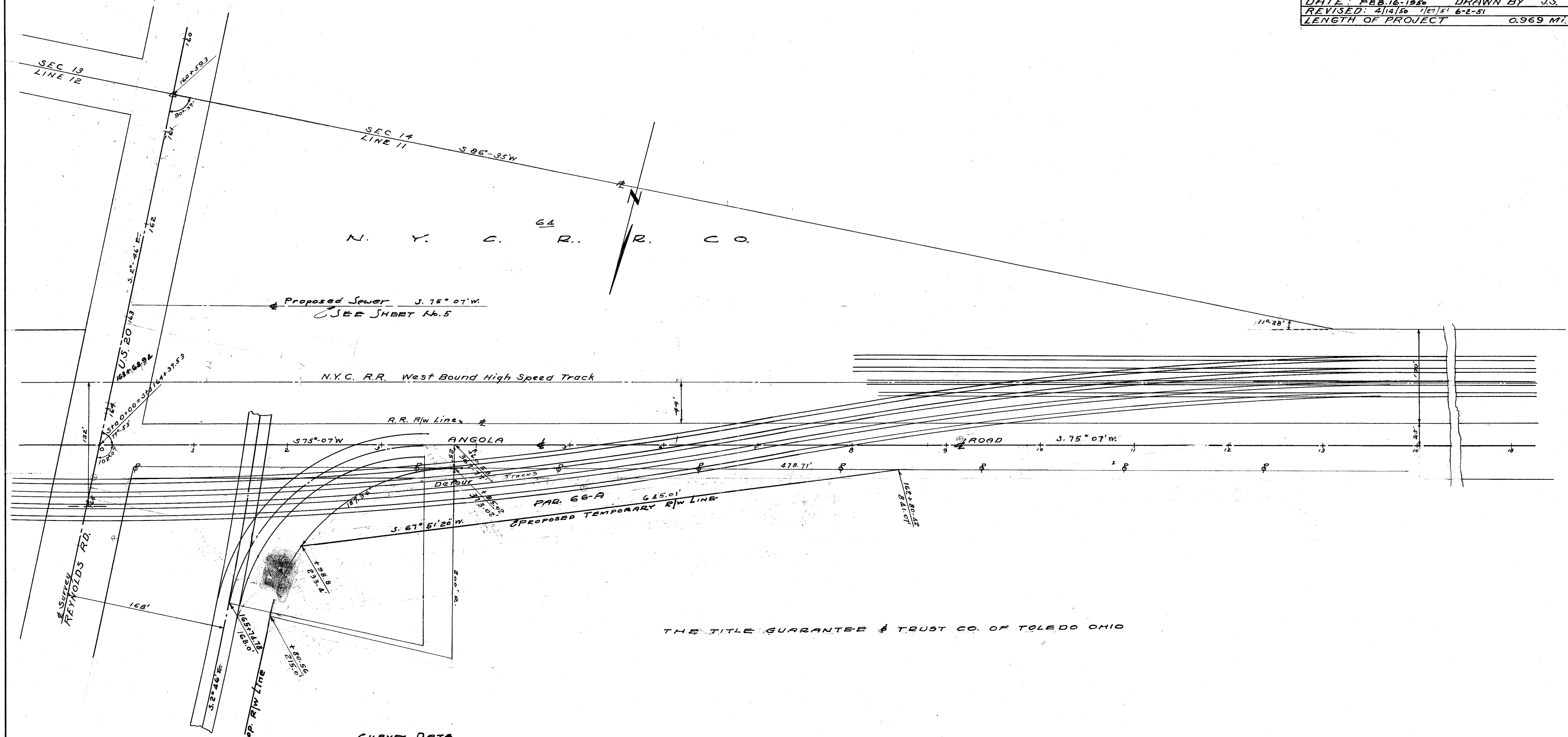
SEC. 12 ADAMS TWP. T. 2 U.S.R.

LUCAS COUNTY
LUC-20-14-00-1A.97
R/W PLANS

DATE: FEB. 16-1950 DRAWN BY J.S.
 REVISED: 6-2-51
 LENGTH OF PROJECT 0.969 MI

3
5





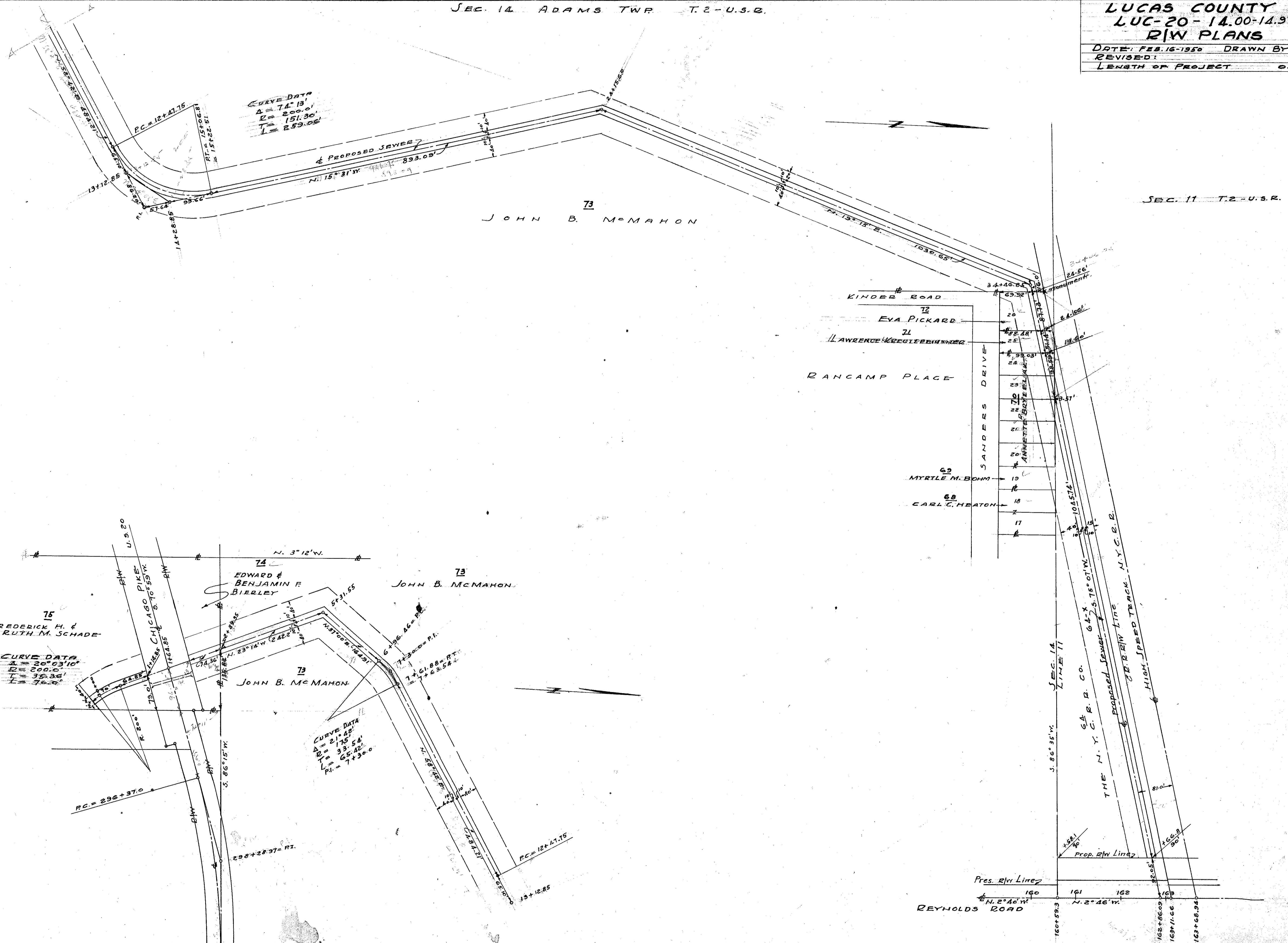
CURVE DATA

Δ Survey	ON R/W
Δ = 77° 53'	Δ = 77° 53'
R = 212'	R = 200'
T = 171.32'	T = 161.62'
L = 288.18'	L = 271.86'
E = 64.51'	E = 60.86'

Planned
 JUN
 1947

LUCAS COUNTY
LUC-20-14.00-14.97
R/W PLANS

DATE: FEB. 16-1950 DRAWN BY J.S.
 REVISED:
 LENGTH OF PROJECT 0.969 MI.



C-05