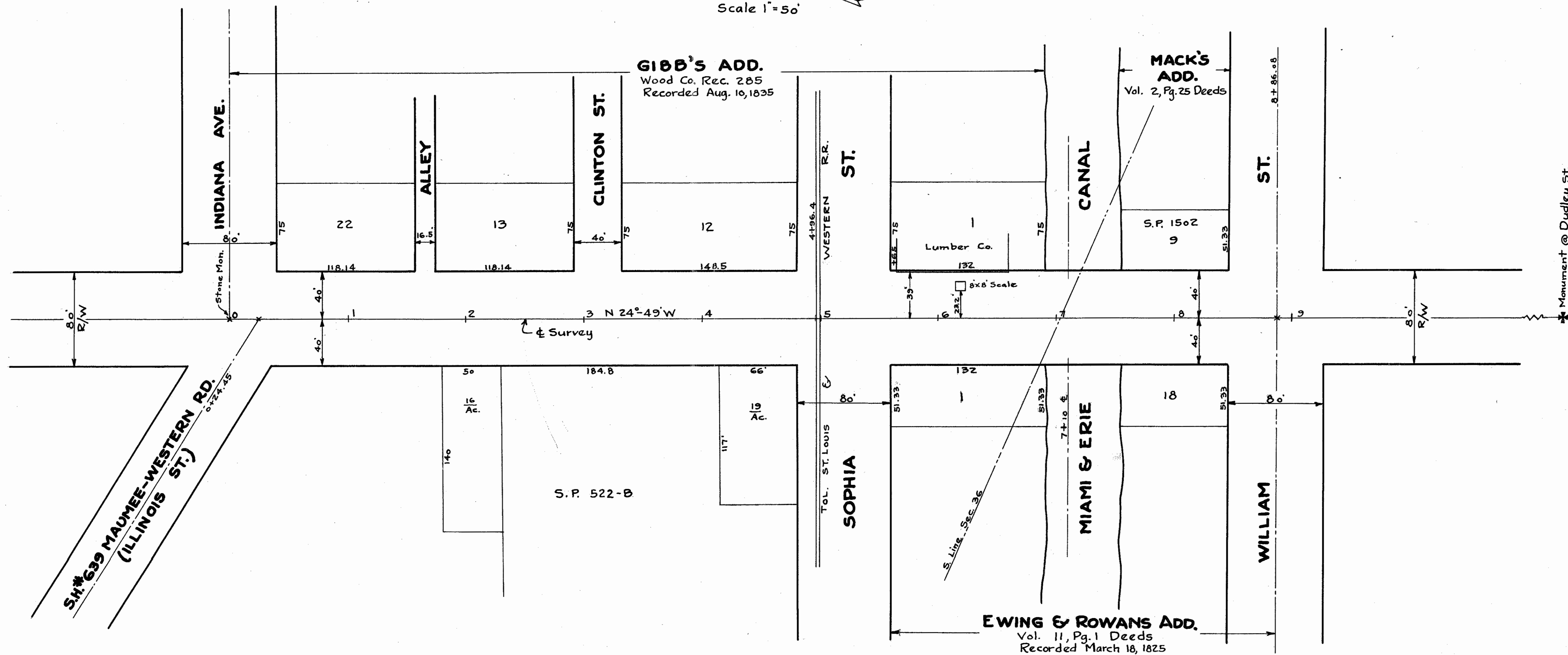
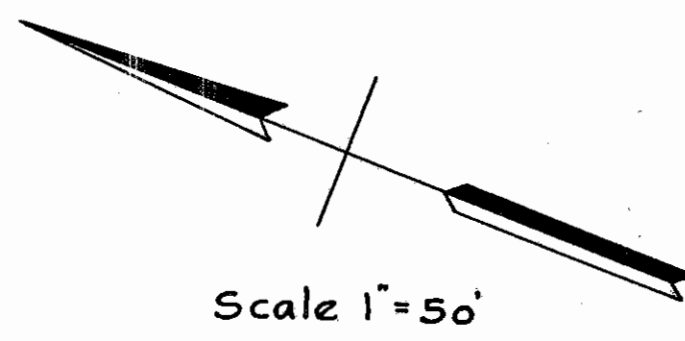


# RIGHT OF WAY PLAN OF CONANT STREET S.H. No. 57 SEC. MAUMEE (PART) LUCAS COUNTY OHIO MAUMEE VILLAGE 1932

I hereby certify this to be a true and correct plat of Conant St.

*Arthur J. Hatch*  
Maumee Village Engineer



Scanned  
June 1997

R-30208 # 12 C-26