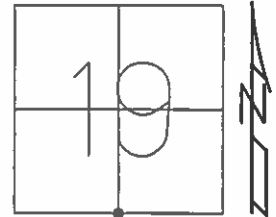


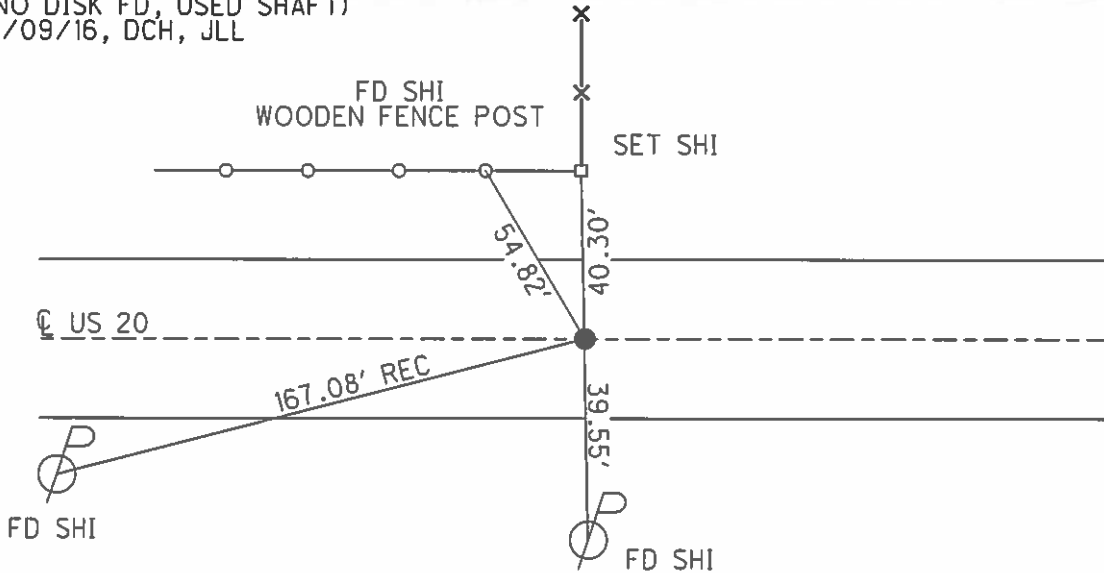
O.D.O.T. DISTRICT 2 SURVEY OFFICE (USE ONLY)

PERSONNEL _____ REFERENCE NO. 2 SHEET 3 OF 36
 NOTES LEU DATE 08/30/16 ROUTE US 20
 H.C. HOMAN WEATHER PARTLY CLOUDY COUNTY LUCAS
 R.C. LEU TEMP. 80° TOWNSHIP RICHFIELD
 _____ SECTION 19-30
 _____ T 9 S R 5 E

TYPE MONUMENT SQ. HEAD BOLT FD.
~~ON SURFACE~~ - BELOW 5"
~~LEFT~~ - ☉ PAV'T - ~~RIGHT~~ YES
12.1 TO RT EDGE PAVEMENT
 S.L.M. 32+96
 Grid: Northing: 733519.887 Easting: 1595084.990



FD SQUARE 601+2"
 BELOW SURFACE 9-6-84
 SET PK/WASHER
 12/18/97, BWC
 NEWREF2
 FD SQ BOLT 4" DOWN
 ATOP A 3/8" SHAFT OF
 BRASS DISK IN CONC
 PAVEMENT. 13 1/2" DOWN
 (NO DISK FD, USED SHAFT)
 11/09/16, DCH, JLL



O.D.O.T. DISTRICT 2 SURVEY OFFICE

PERSONNEL

REFERENCE NO. 2

SHEET 2 OF 22

NOTES CORDES

H.C. VAN DUSEN

DATE 6-24-97

ROUTE LUCAS US #20

R.C. COX

WEATHER SUNNY

COUNTY LUCAS

TEMP. +75°

TOWNSHIP Richfield

SECTION 19-30

T9 S R 5 E

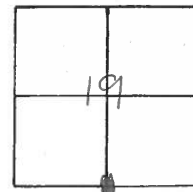
TYPE MONUMENT Sq. head Bolt

~~ON~~ SURFACE - BELOW 2"

LEFT - E PAV'T. - ~~RIGHT~~ Yes

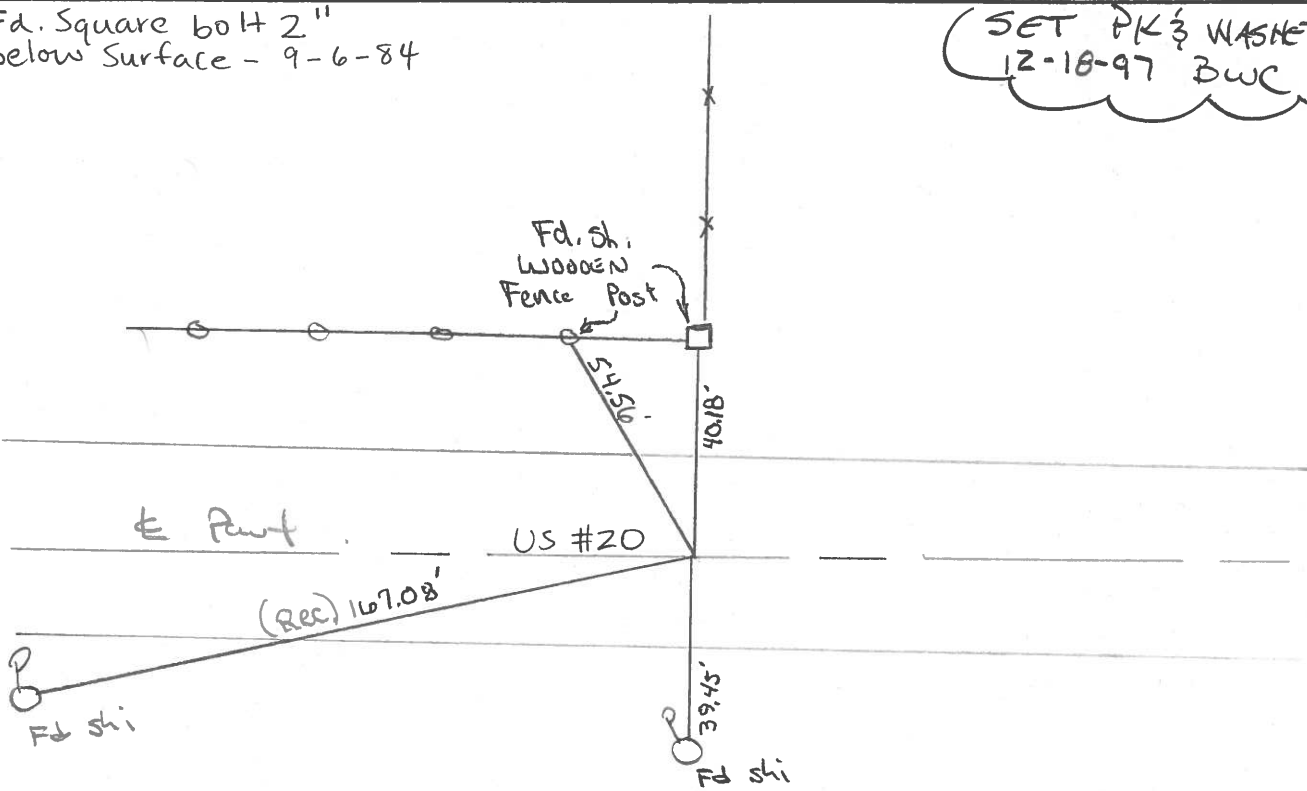
12.1 TO RT EDGE PAVEMENT

S.L.M. 32+96



Fd. Square bolt 2"
below Surface - 9-6-84

SET PK 3 WASHER
12-18-97 BWC



County Lucas S.R. US#20

Date 28 June 84

Township Richfield

Weather Fair

Section 19-30

Temp. 70°

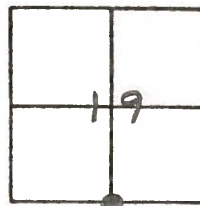
T_N, R_E

Personnel J. Stone

P. Neuser

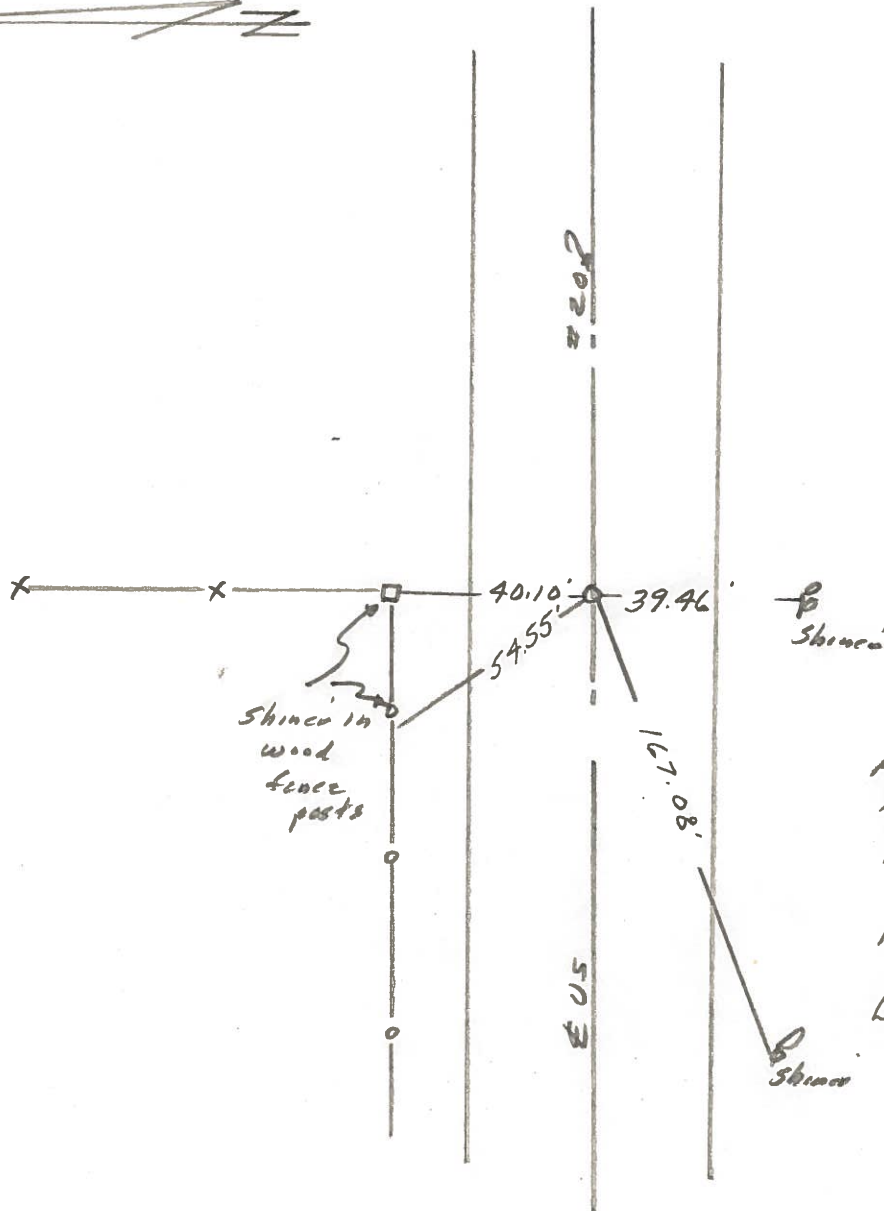
R. Michalak

D. Curtis



SLM Sta. 33+43

REF. NO. 2



Fd. Square bolt to Surface
11.5' to S. edge put.
13.0' to N. edge put.

Fd. Square bolt 2"
below Surface - 9-6-84

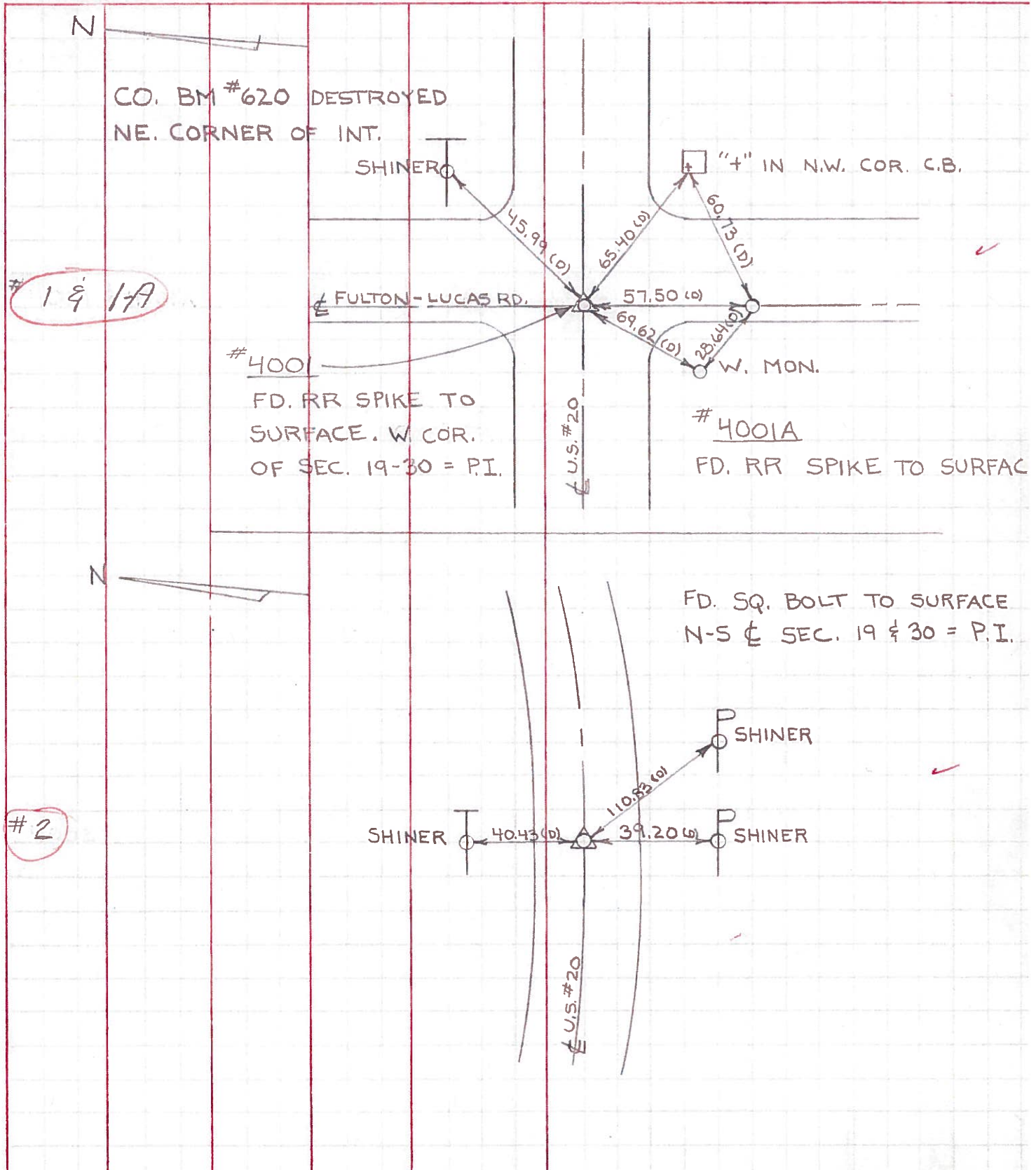
PERSONNEL TITLE PERSONNEL TITLE
 W. DENNO _____
 D. STEVENS _____
 R. BRANNAN _____

COUNTY LUCAS DATE JULY 28, 1971

S. R. US # 20 WEATHER FAIR

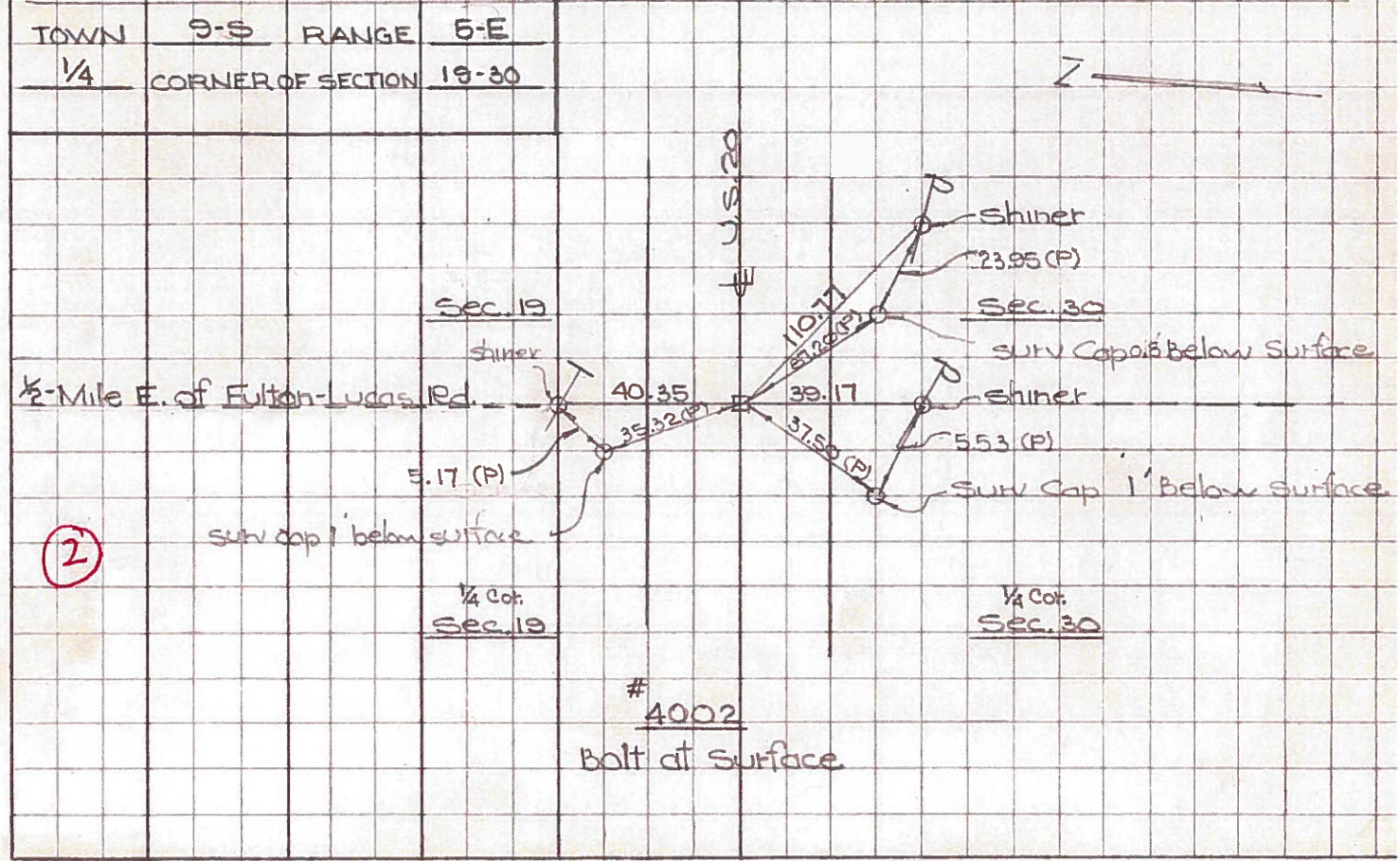
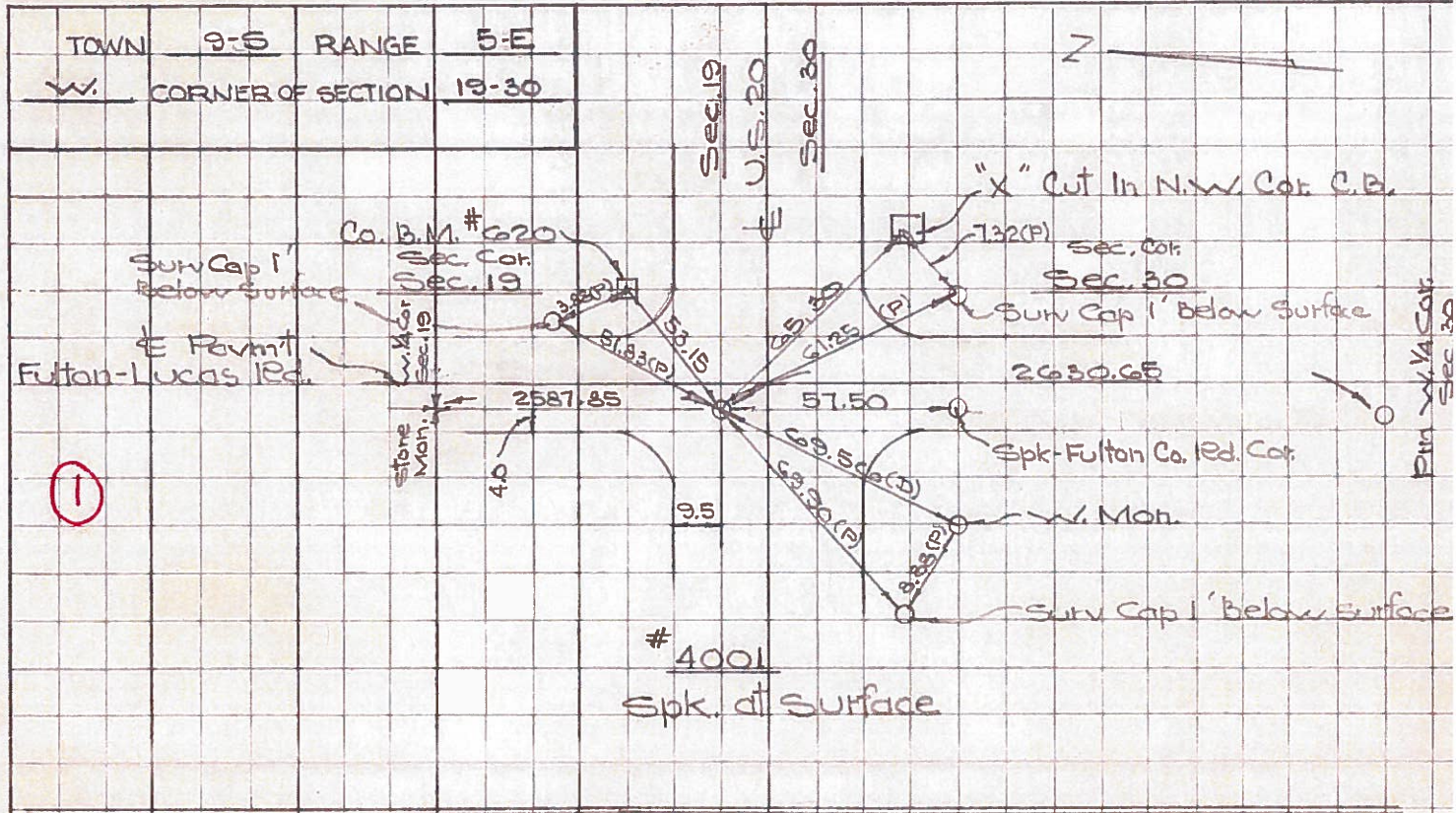
SEC. _____ TEMP. 75±

DESCRIPTION REFERENCES TO CONTROL POINTS JOB NO.
 LEFT CENTER LINE RIGHT



PERSONNEL TITLE PERSONNEL TITLE COUNTY LUCAS DATE May 2, 1968
 D. Curtis _____ J. Teal _____ S. R. 20 WEATHER mild
 J. Brindley _____ SEC. _____ TEMP. 60° ±

DESCRIPTION U.S. 20 (Central Ave) - Ref. Mon & Control Points JOB NO. 02994(0)
 LEFT CENTER LINE RIGHT



Town 95 Range 5E

1/4 Corner of Sections 19-30

Kind of Monument Mon. Remarks

Bolt at surface OK

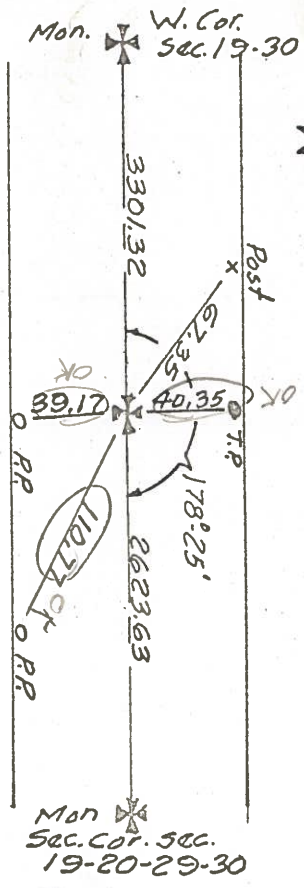
FOUND 3/8/67 BY GUST

N. & S. Road 1/2 Mile W. of Lathrop Rd. F. B. P.

E. & W. Road Central Ave. F. B. P.

(2)

Date Checked:



4002

Town 95 Range 5E

Sec. Corner of Sections 19-20-29-30

Kind of Monument Mon. Remarks

Bolt at surface OK

FOUND 3/1/67 BY GUST

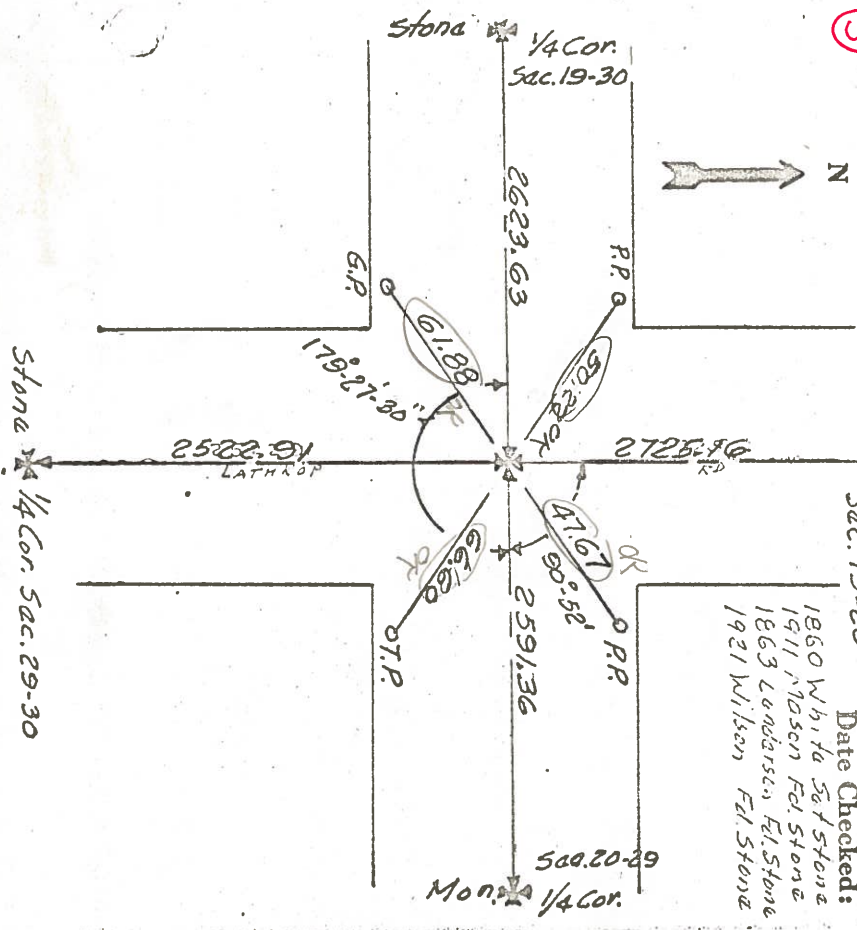
N. & S. Road Lathrop Rd. F. B. P.

E. & W. Road Central Ave. F. B. P.

(3)

Mon. 1/4 Cor. Sec. 19-20

Date Checked:



- 1860 White Sd. Stone
- 1911 Moser Fed. Stone
- 1863 Lonsdale, Fed. Stone
- 1921 Wilson Fed. Stone

4003

PERSONNEL TITLE PERSONNEL TITLE

COUNTY Lucas DATE 3-10-53

S. R. U.S.#20 WEATHER

SEC. _____ TEMP. checked 9/18/58

DESCRIPTION Central Ave. JOB NO. Bowerman

Checked 8/4/60
D. Ruff

LEFT	CENTER LINE	RIGHT
Fulton Lucas Rd. P.K. nail iron Rod		N.E. to witness man. 40.86 S.W. to witness man. 67.31 S.E. to t-in N.W. corner of C.B. 65.3 N.W. to shiner in T.P. 60.0
① #40 ✓		
5/4 cor. sec. 19 Post Spk	6.728	40.36' N. To Shi. in T. Pole 67.22' N.W. To Shi. F. Post (4 th) 40.24' S. To Shi. in A. Post
② #41 ✓		
Int. Lathrop & Central 59+25.64 Post Spk. (did not find)		110.91' S.E. To N.W. Cor. Tavern 50.23' N.W. To Shi. in P. Pole 48.62' N.E. To & San. B.M. Mon. 66.43' S.W. To Nail in E. Side 36" E
③ #42 ✓		
South 1/4 cor. sec. 20 - R5E P.K. Post Spk		S.W. to E.E. spk. in 24" maple 77.13 S.E. to shiner in 18" maple 39.22 N. to E.E. spike in P.P. 38.5 S.E. To R.R. Spk. 18" Maple 39.0
④ #43 ✓		
Int. Berkeley Southern Brass Plate in Conc. Post Spk.		N.E. To Lucas Co. B.M. Centerhole 52 N.W. To Shiner in P. Pole 48.8 S.W. To Shiner in T. Pole 72.8 S.E. To Shiner in T. Pole 76.5 90.37
⑤ #44 ✓		
South 1/4 cor. sec. 21 E5E. Post Spk	Plumbed	{ 33.60 S. to witness man. 33.6 43.73 N.W. to witness man. 43.6 38.43 N. to tack in P.P. 38.4 79.75 shiner in T 1/2 ESE 79.97 " " " SW
⑥ #45 ✓		