

O.D.O.T. DISTRICT 2 SURVEY OFFICE (USE ONLY)

PERSONNEL

REFERENCE NO. 5

SHEET 6 OF 37

NOTES LEU

DATE 8-23-16

ROUTE SR 20

H.C. HOMAN

WEATHER SUNNY

COUNTY LUCAS

R.C. LEU

TEMP. 68°F

TOWNSHIP RICHFIELD

SECTION 28

DWG BY MAHLER PID _____

T 9 N R 5 E

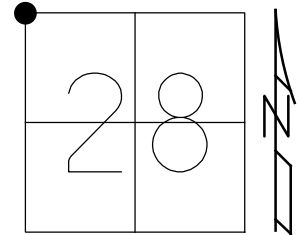
TYPE MONUMENT MONBOX

ON SURFACE - ~~BELOW~~ ON

OFFSET 1.2' CL PAVEMENT US 20 LT : RT

- TO - EDGE PAVEMENT

STATION: 111+31



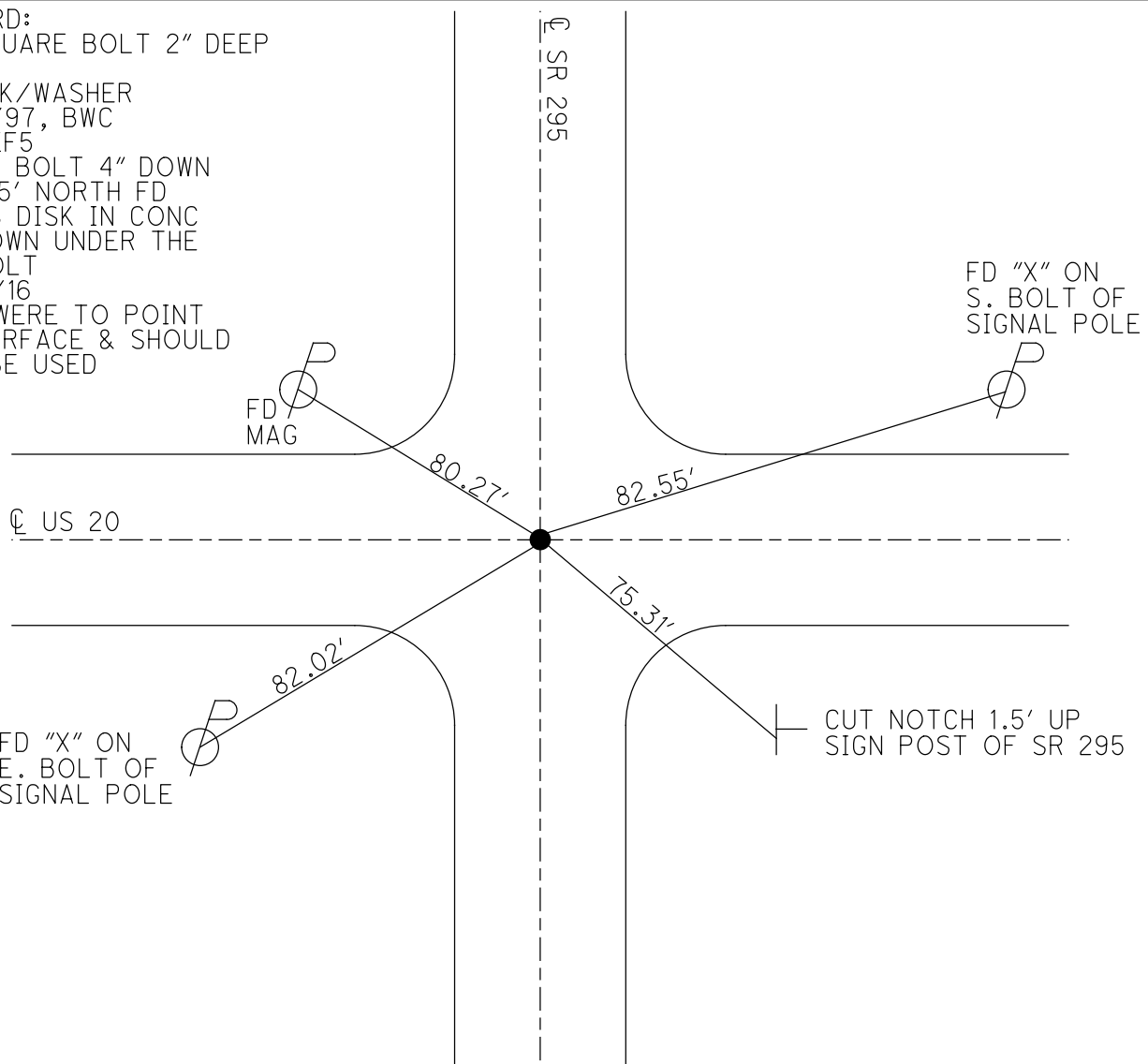
HORIZ.DATUM: NAD83 (2011)

GEOID: NAVD88-2012A

GRID: NORTHING: 733512.807

EASTING: 1602919.033

RECORD:
 FD SQUARE BOLT 2" DEEP
 1984
 SET PK/WASHER
 12/18/97, BWC
 NEWREF5
 FD SQ BOLT 4" DOWN
 & 0.25' NORTH FD
 BRASS DISK IN CONC
 14" DOWN UNDER THE
 SQ BOLT
 11/09/16
 TIES WERE TO POINT
 ON SURFACE & SHOULD
 NOT BE USED



O.D.O.T. DISTRICT 2 SURVEY OFFICE (USE ONLY)

PERSONNEL _____ REFERENCE NO. 5 SHEET 6 OF 36
 NOTES LEU DATE 08/23/16 ROUTE US 20
 H.C. HOMAN WEATHER SUNNY COUNTY LUCAS
 R.C. LEU TEMP. 68° TOWNSHIP RICHFIELD
 _____ SECTION 20-21 - 28-29
 _____ T 9 S R 5 E

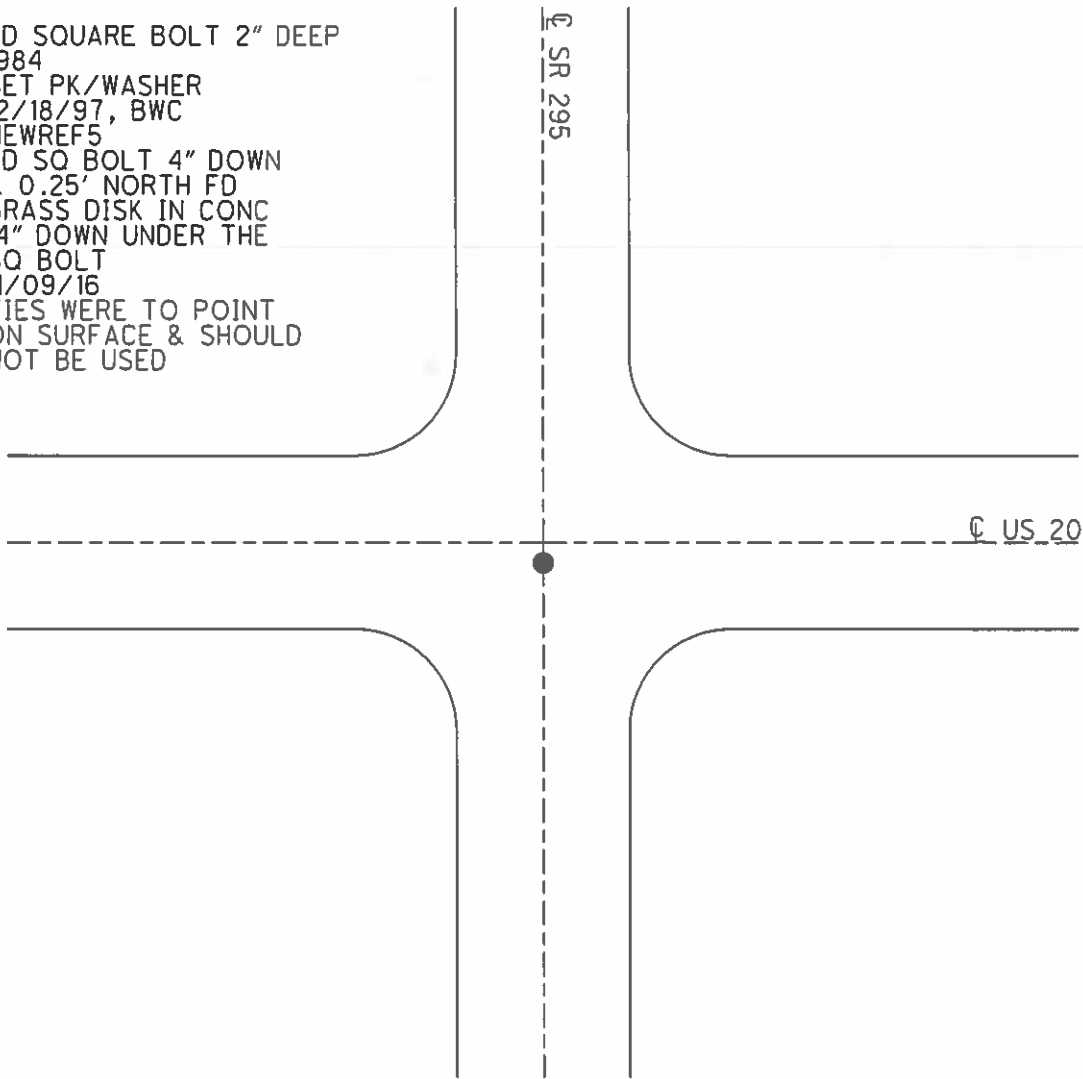
TYPE MONUMENT FD MAG
 ON SURFACE - ~~BELOW~~ ON
~~LEFT~~ - ☉ PAV'T - RIGHT 1.2' ☉ PAUT US 20
_____ TO _____ EDGE PAVEMENT
 S.L.M. 111+31

20	21
29	28



Grid: Northing: 733512.807 Easting: 1602925.437

FD SQUARE BOLT 2" DEEP
 1984
 SET PK/WASHER
 12/18/97, BWC
 NEWREF5
 FD SQ BOLT 4" DOWN
 & 0.25' NORTH FD
 BRASS DISK IN CONC
 14" DOWN UNDER THE
 SQ BOLT
 11/09/16
 TIES WERE TO POINT
 ON SURFACE & SHOULD
 NOT BE USED



O.D.O.T. DISTRICT 2 SURVEY OFFICE

PERSONNEL

REFERENCE NO. 44-A/S

SHEET 1 OF 10

NOTES CORDES

DATE 6-24-97

ROUTE SR295/US 20

H.C. VAN DUSEN

WEATHER SUNNY

COUNTY LUCAS

R.C. COX

TEMP. 90°

TOWNSHIP RICHFIELD

SECTION 20-21-28-29

T 9 S R 5 E

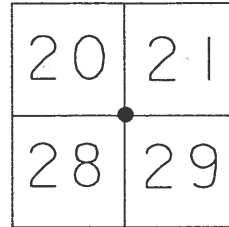
TYPE MONUMENT SMALL RR SPIKE

ON SURFACE ~~- BELOW~~ YES

~~LEFT~~ - Q PAV'T - RIGHT 1.2' RT Q PAVT
US 20

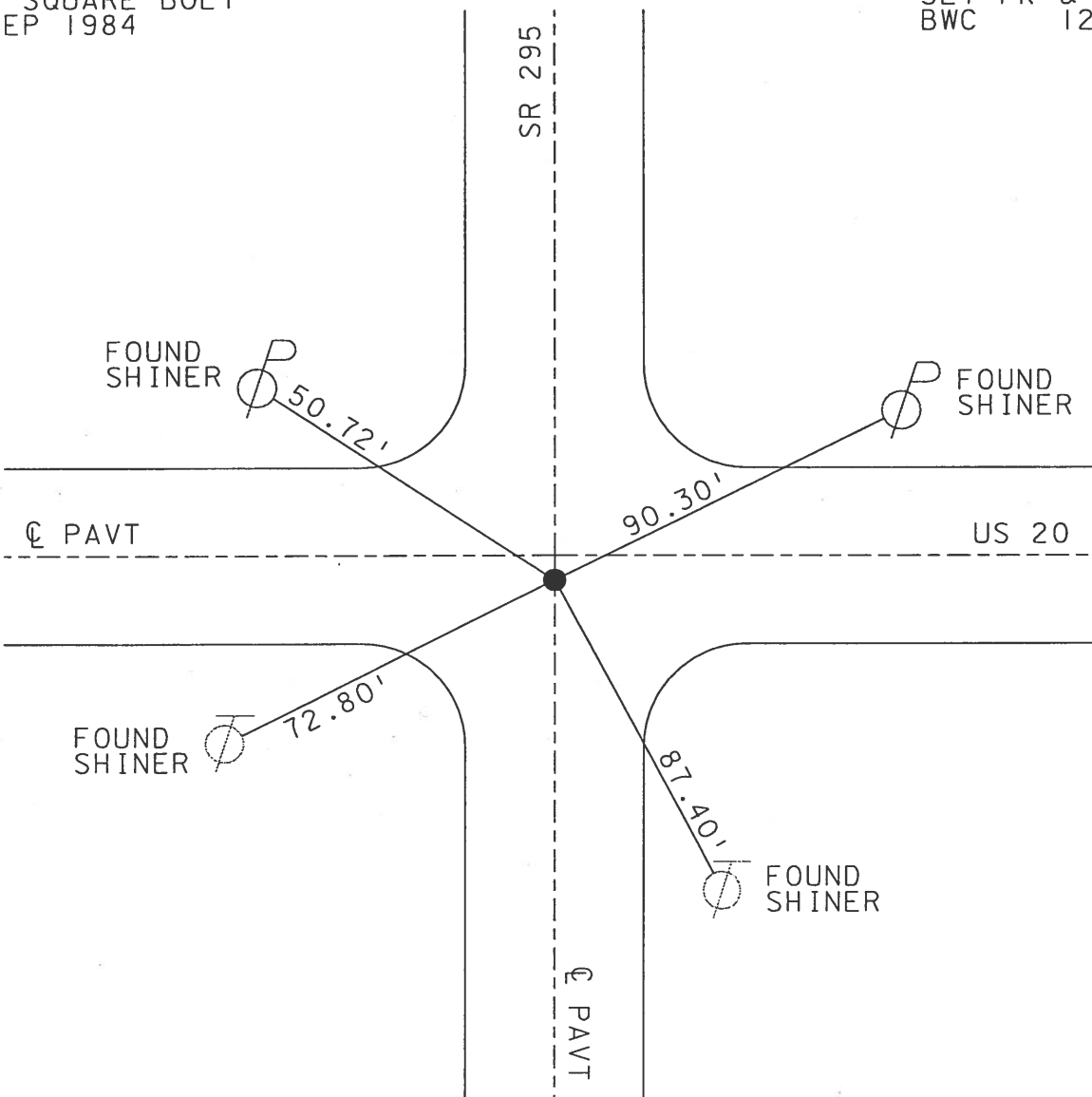
TO EDGE PAVEMENT

S.L.M. 953+57 on SR295 / 111+31 on U.S. 20



FOUND SQUARE BOLT
2" DEEP 1984

SET PK & WASHER
BWC 12-18-97



O.D.O.T. DISTRICT 2 SURVEY OFFICE

PERSONNEL

REFERENCE NO. 5

SHEET 5 OF 22

NOTES CORDES

H.C. VAN DUSEN

DATE 6-24-97

ROUTE LUCAS US#20

R.C. Cox

WEATHER SUNNY

COUNTY LUCAS

TEMP. +90

TOWNSHIP Richfield

SECTION 20-21-28-29

T9 S R 5 E

TYPE MONUMENT Sm R.R. Spike

ON SURFACE - ~~BELOW~~ Yes

LEFT- & PAV'T. - RIGHT 1.2' Rt ^{to PAVT U.S.20}

TO EDGE PAVEMENT

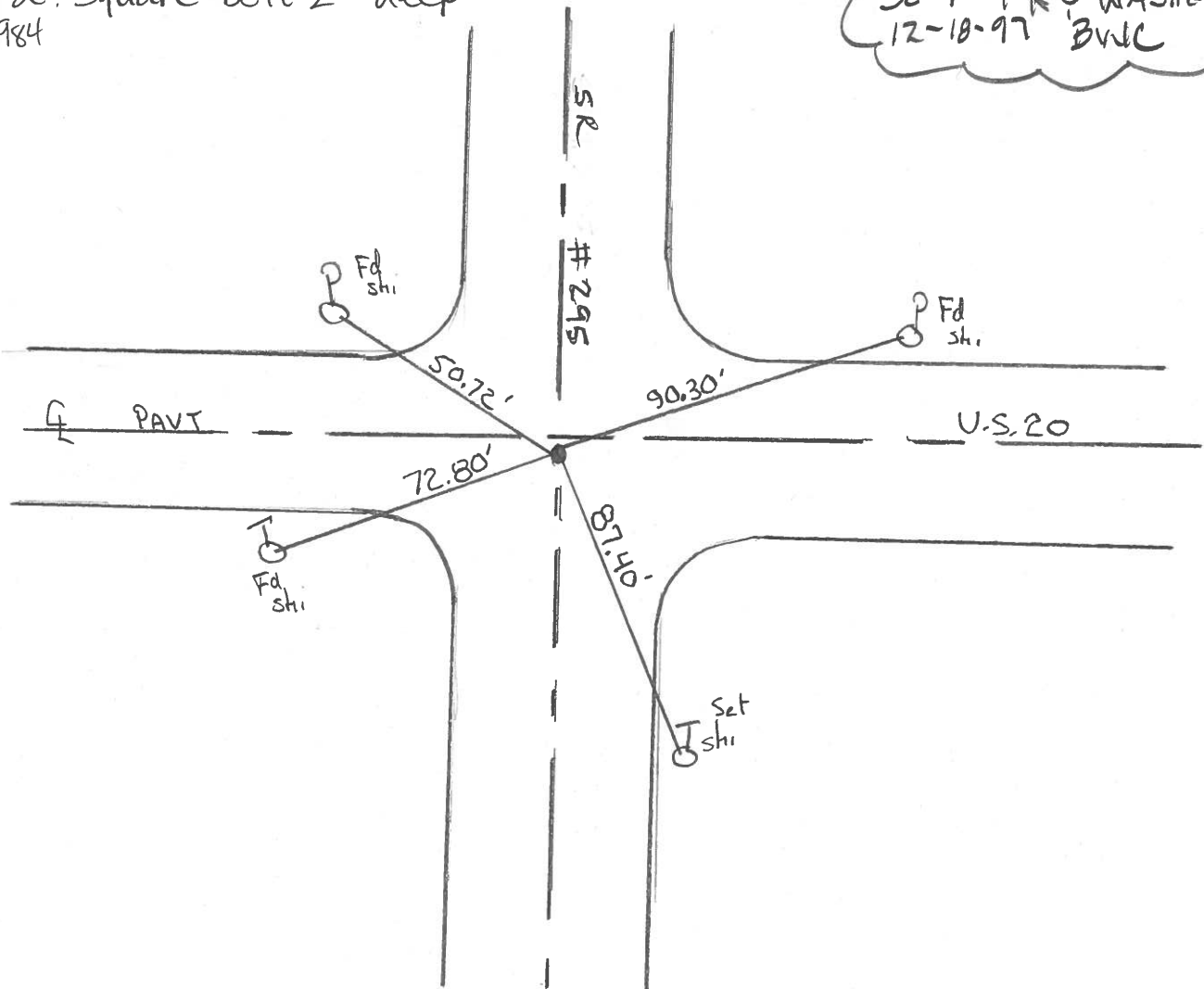
S.L.M. 111+31

20	21
29	28



Fd. Square bolt 2" deep
1984

SET PK 3 WASHER
12-18-97 BVC



County Lucas SR. US#20

Date 28 June 84

Township Richfield

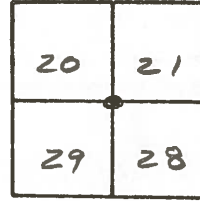
Weather Fair

Section 20-21-28-29

Temp. 73°

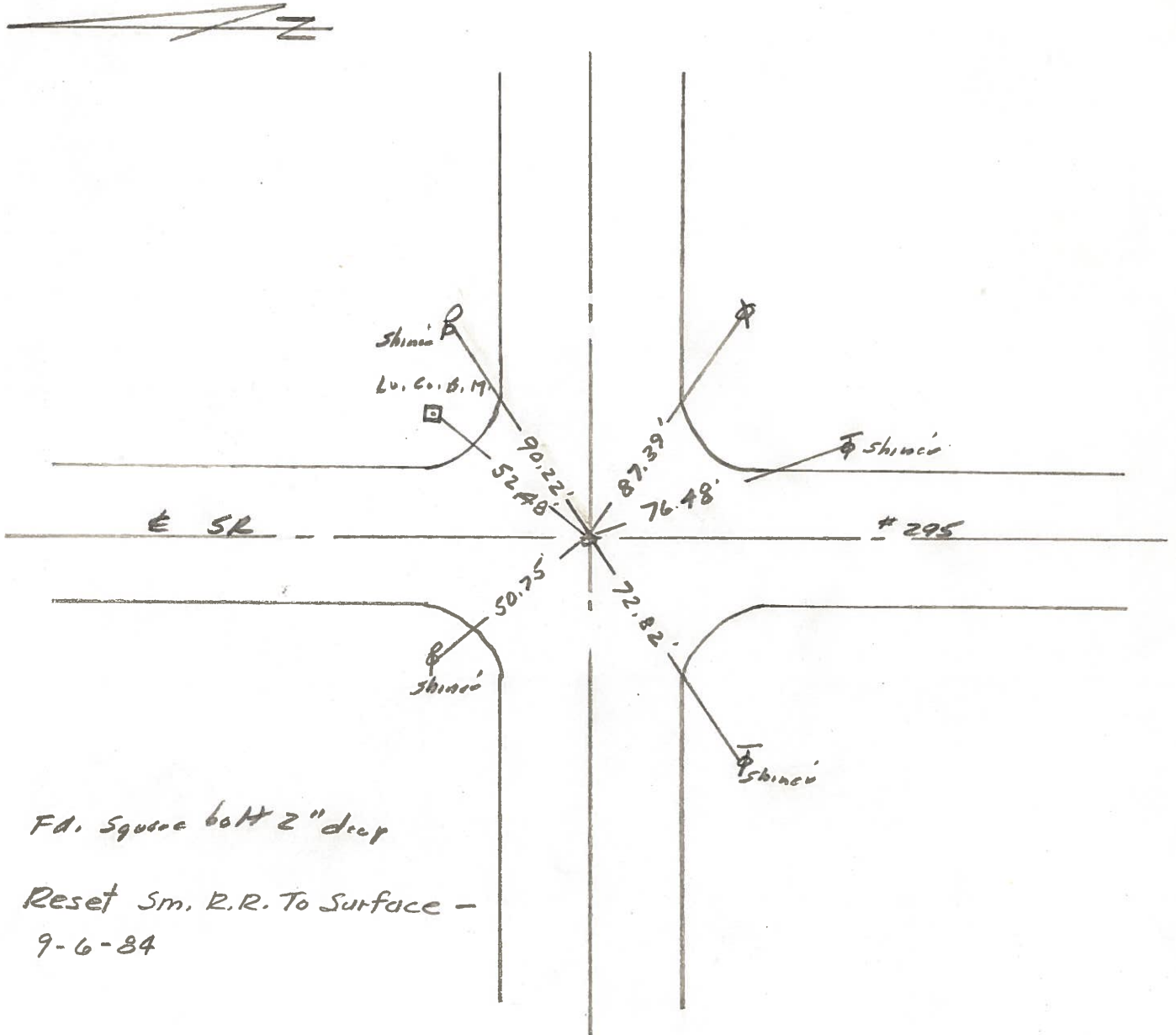
T N, R E

Personnel L. Stone
P. Neuse
R. Michalak
D. Curtis



SLM Sta. 111+84

REF. NO. 5



Fd. Square bolt 2" deep

Reset Sm. R.R. To Surface -

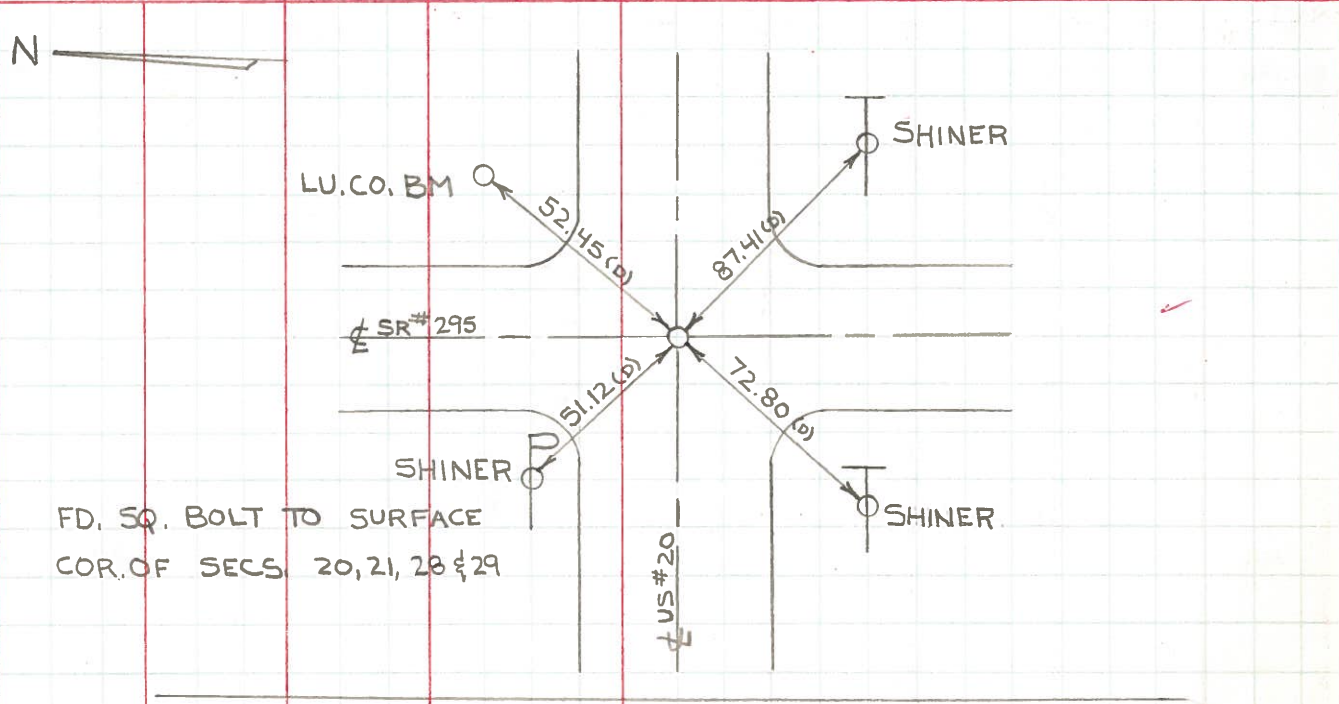
9-6-84

PERSONNEL TITLE PERSONNEL TITLE
 W. DENNO _____
 D. STEVENS _____
 R. BRANNAN _____

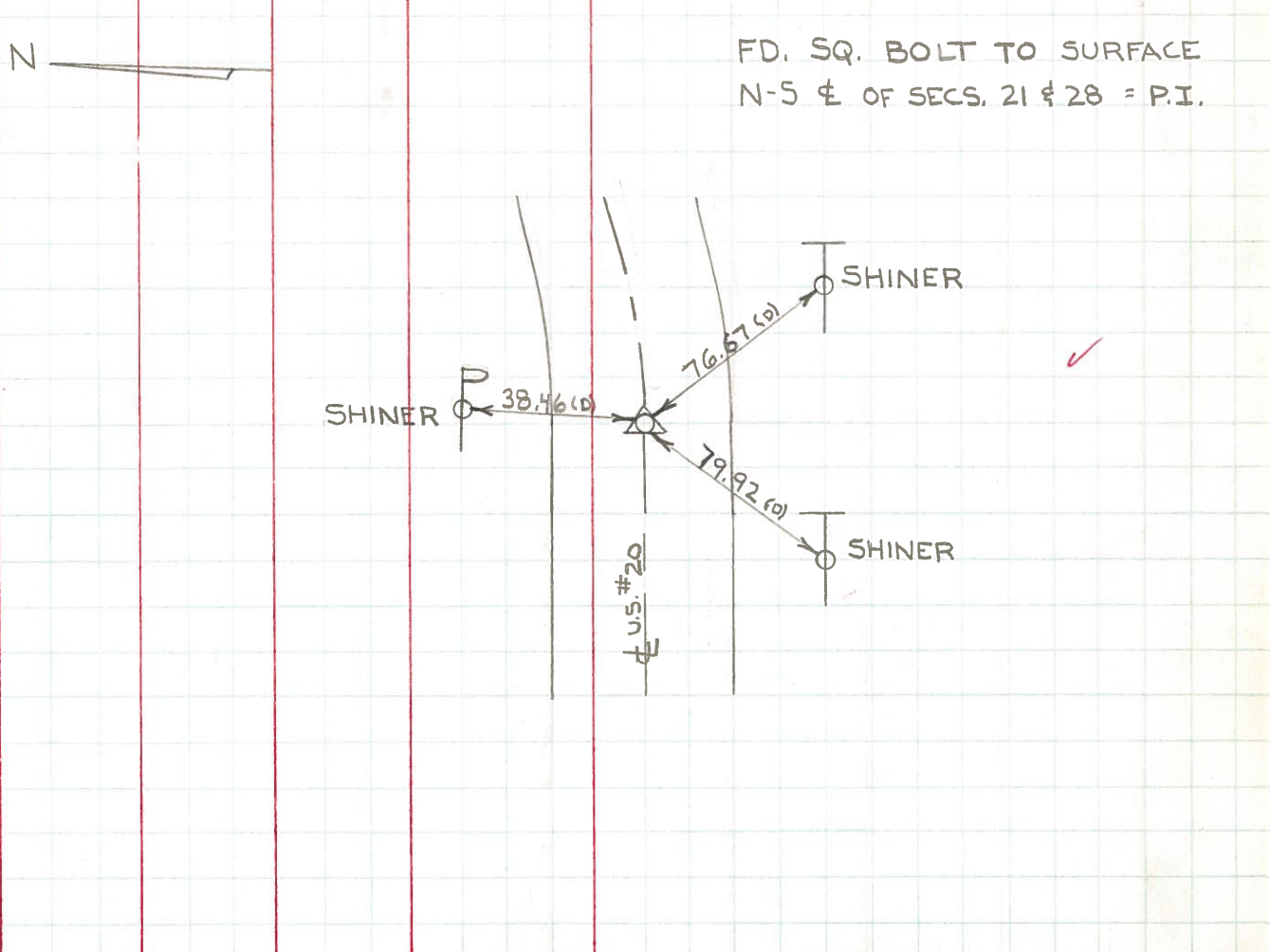
COUNTY LUCAS DATE JULY 29, 1971
 S. R. US #20 WEATHER FAIR
 SEC. _____ TEMP. 75±

DESCRIPTION REFERENCES TO CONTROL POINTS JOB NO.
 LEFT CENTER LINE RIGHT

5



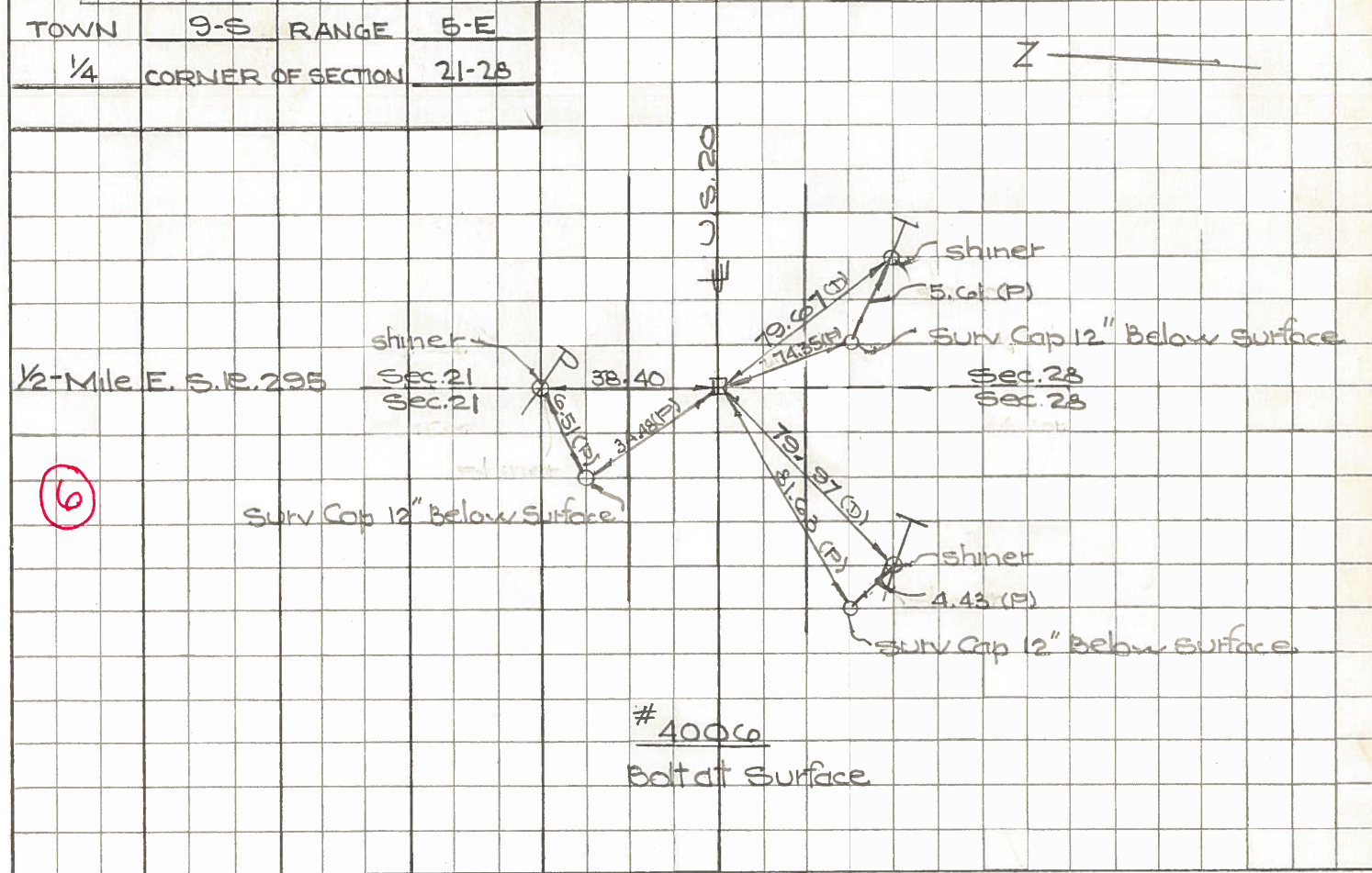
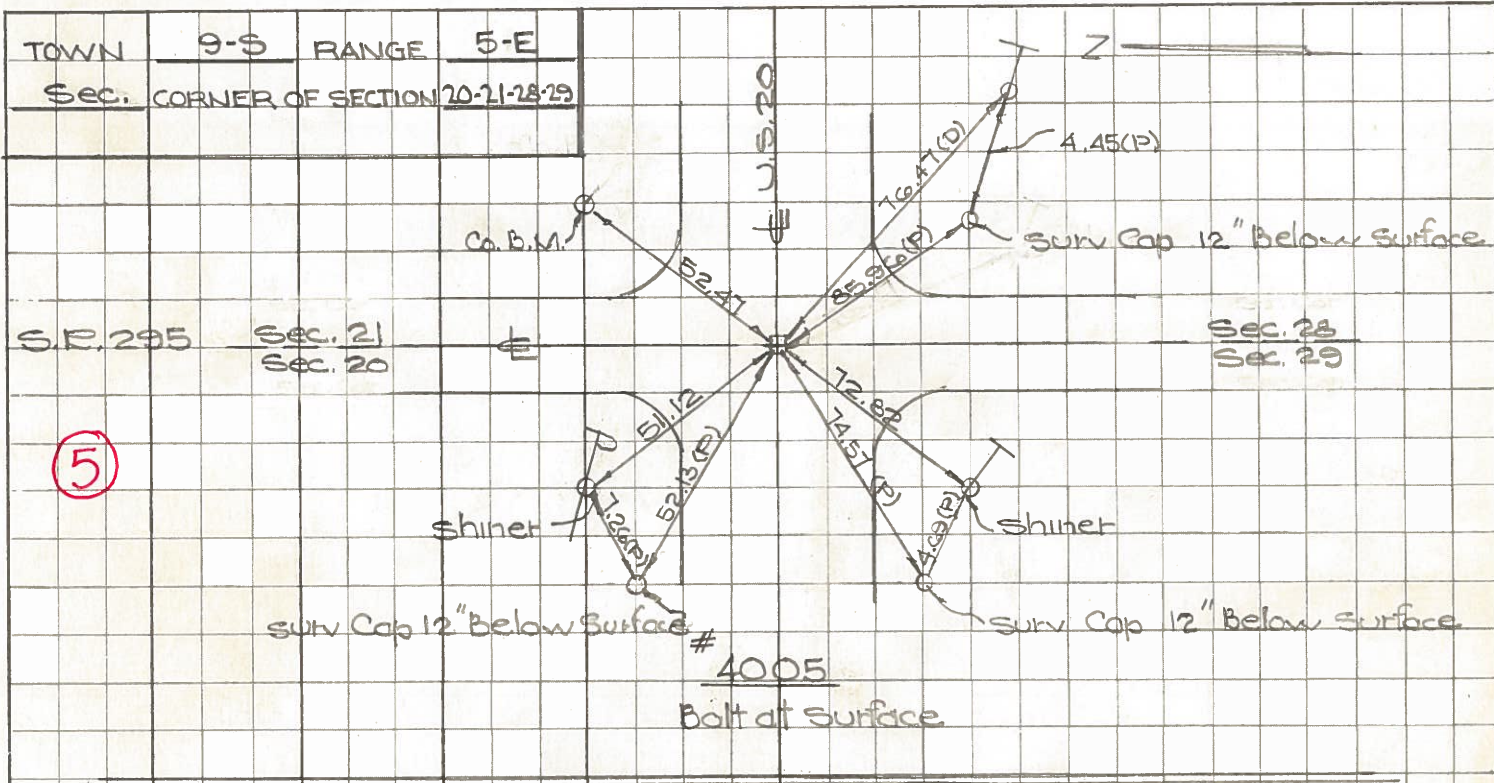
6



PERSONNEL TITLE PERSONNEL TITLE
 W. Denno _____
 J. Teal _____
 J. Brindley _____
 D. Curtis _____

COUNTY Lucas DATE May 2, 1968
 S. R. 20 WEATHER mild
 SEC. _____ TEMP. 65° ±

DESCRIPTION U.S. 20 (Central Ave) - Ref. Mon. & Control Points JOB NO. 02994(0)
 LEFT CENTER LINE RIGHT



Town 95 Range 5-E
 1/4 Corner of Sections 20-29

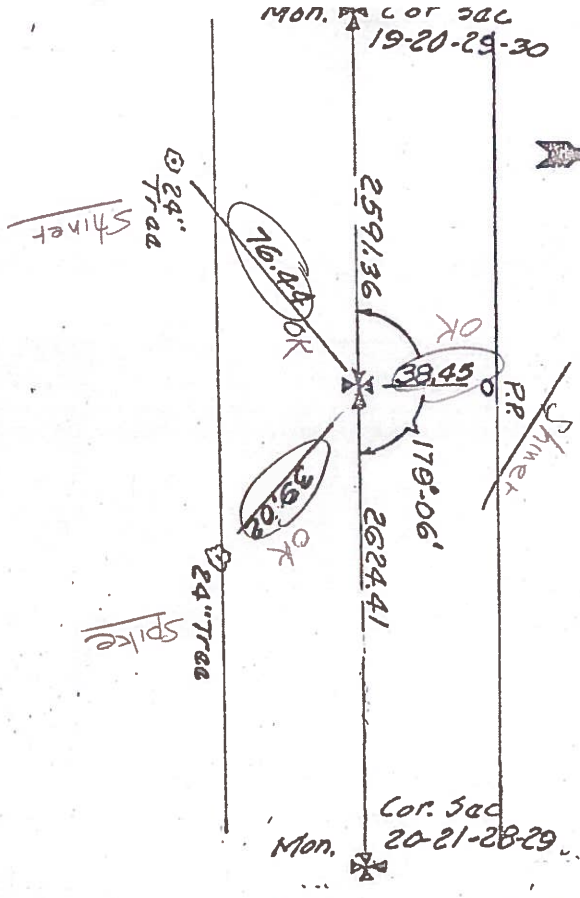
Kind of Monument Mon. Remarks OK Ball of surface

FOUND 3/8/67 BY GUST

N. & S. Road 1/2 Mile E of Lathrop St. B. P.
 E. & W. Road Central Ave F. B. P.

(4)

Date Checked:
 1850 Vaughn Fd. W/17.
 1860 White Fd. Stone
 1927 Wilson Fd. Stone



4004

Town 95 Range 5 E
 Sec. Corner of Sections 20-21-28-29

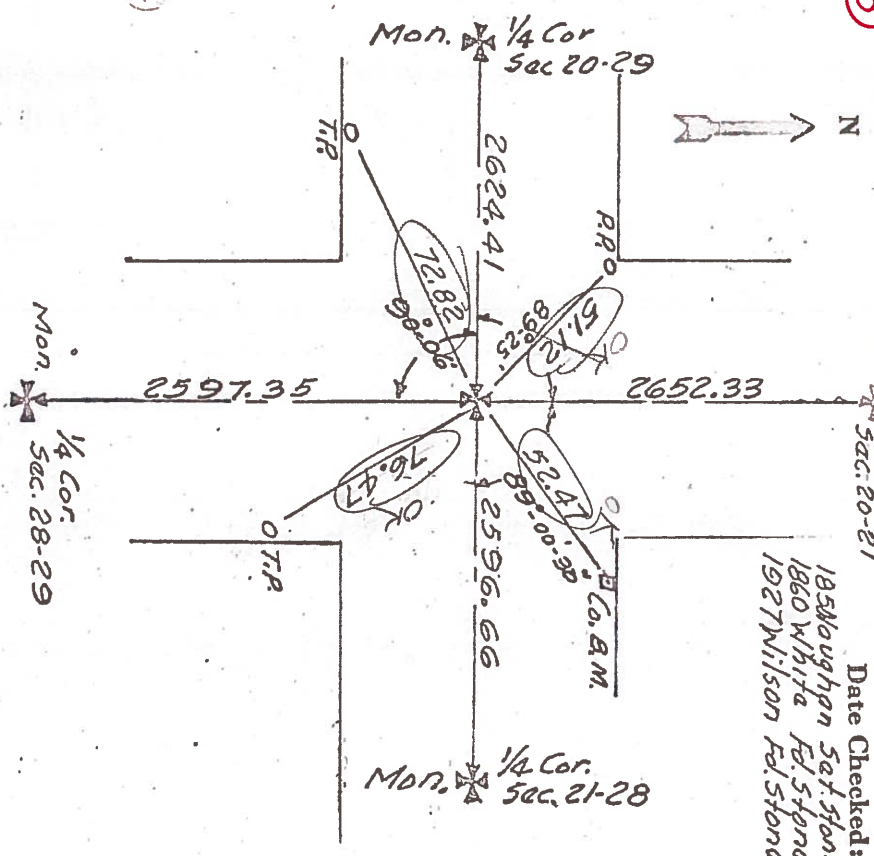
Kind of Monument Granite Mon Remarks OK Ball of surface

FOUND 7/14/67 BY GUST

N. & S. Road Berkey-Southern St. B. P.
 E. & W. Road Central Ave. F. B. P.

(5)

Date Checked:
 1850 Vaughn Sac. Stone
 1860 White Fd. Stone
 1927 Wilson Fd. Stone



4005

PERSONNEL TITLE PERSONNEL TITLE

COUNTY Lucas DATE 3-10-53

S. R. U.S. #20 WEATHER

SEC. _____ TEMP. checked 9/18/58

DESCRIPTION Central Ave. JOB No. Bowerman

checked 8/4/60
D. Ruff

LEFT	CENTER LINE	RIGHT
Fulton Lucas Rd. P.K. nail iron Rod		N.E. to witness man. 40.86 S.W. to witness man. 69.31 S.E. to t-in N.W. corner of C.B. 65.3 N.W. to shiner in T.P. 60.0
① #40 ✓		
5/4 cor. sec. 19 Post Spk	6.788	40.36' N. To Shi. in T. Pole 67.22' N.W. To Shi. F. Post (4 th) 40.24' S. To Shi. in A. Post.
② #41 ✓		
Int. Lathrop & Central 59+25.64 Post Spk. (did not find)		110.91' S.E. To N.W. Cor. Tavern 50.23' N.W. To Shi. in P. Pole 48.62' N.E. To & San. B.M. Mon. 66.43' S.W. To Nail in E. Side 36" E
③ #42 ✓		
South 1/4 cor. sec. 20 - R5E P.K. Post Spk		S.W. to E.E. spk. in 24" maple 77.13 S.E. to shiner in 18" maple 39.22 N. to E.E. spike in P.P. 38.5 S.E. To R.R. Spk. 18" Maple 39.0
④ #43 ✓		
Int. Berkeley Southern Brass Plate in Conc. Post Spk.		N.E. To Lucas Co. B.M. Centerhole 52 N.W. To Shiner in P. Pole 48.8 S.W. To Shiner in T. Pole 72.8 S.E. To Shiner in T. Pole 76.5 90.37
⑤ #44 ✓		
South 1/4 cor. sec. 21 E5E. Post Spk	Plumbed {	33.60 S. to witness man. 38.6 43.73 N.W. to witness man. 43.6 38.43 N. to tack in P.P. 38.4 79.75 shiner in T. Pole ESE 79.97 " " " SW
⑥ #45 ✓		