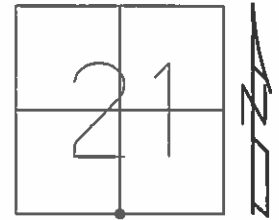


O.D.O.T. DISTRICT 2 SURVEY OFFICE (USE ONLY)

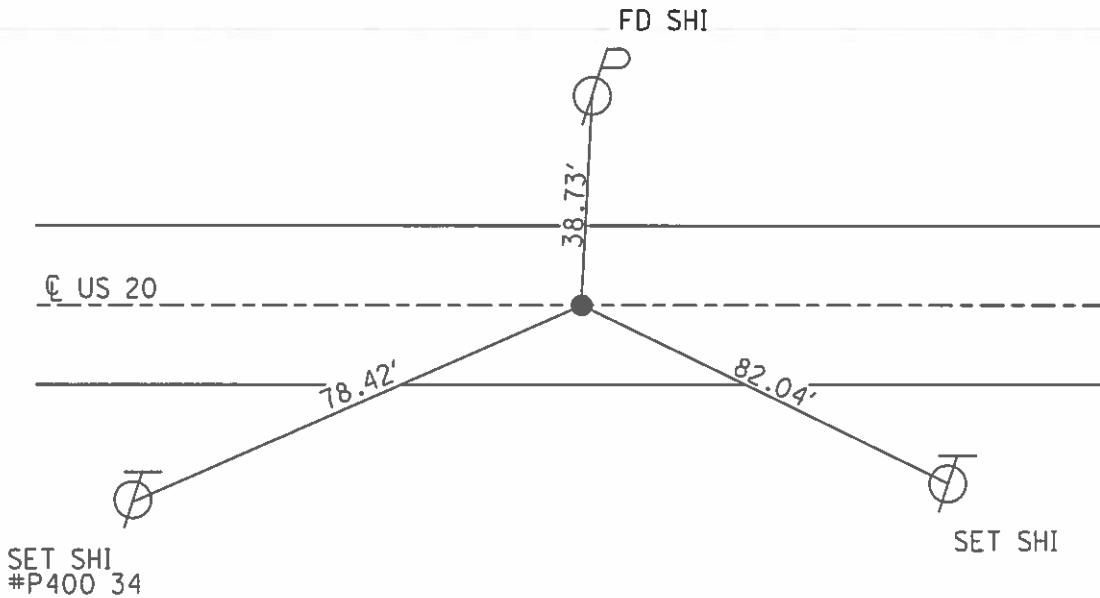
PERSONNEL \_\_\_\_\_ REFERENCE NO. 6 SHEET 8 OF 36  
 NOTES LEU DATE 08/23/16 ROUTE US 20  
 H.C. HOMAN WEATHER SUNNY COUNTY LUCAS  
 R.C. LEU TEMP. 71° TOWNSHIP RICHFIELD  
 SECTION 21  
 T 9 S R 5 E

TYPE MONUMENT \_\_\_\_\_ FD MAG/W \_\_\_\_\_  
~~ON SURFACE~~ - BELOW ON  
~~LEFT - C-PAVT~~ - RIGHT 0.6  
11.6 TO RT EDGE PAVEMENT  
 S.L.M. 137+28



Grid: Northing: 733600.859 Easting: 1605520.806

RECORD 12-84  
 FD SQUARE BOLT 4" DEEP  
 SET PK/WASHER  
 12/18/97, BWC  
 NEWREF6  
 FD BRASS DISK W/DIMPLE  
 14" DOWN ON CON. PAVT



O.D.O.T. DISTRICT 2 SURVEY OFFICE

PERSONNEL \_\_\_\_\_

REFERENCE NO. 6

SHEET 7 OF 22

NOTES CORDES

H.C. VAN DUSEN

R.C. COX

DATE 6-24-97

WEATHER SUNNY

TEMP. +91

ROUTE U.S. 20

COUNTY LUCAS

TOWNSHIP Richfield

SECTION 21

T O S R S E

Set P.K. / WASHER  
12-18-97  
BWE

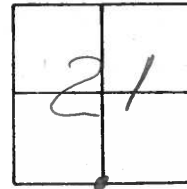
TYPE MONUMENT Square Head Bolt

~~ON SURFACE~~ - BELOW ± 4"

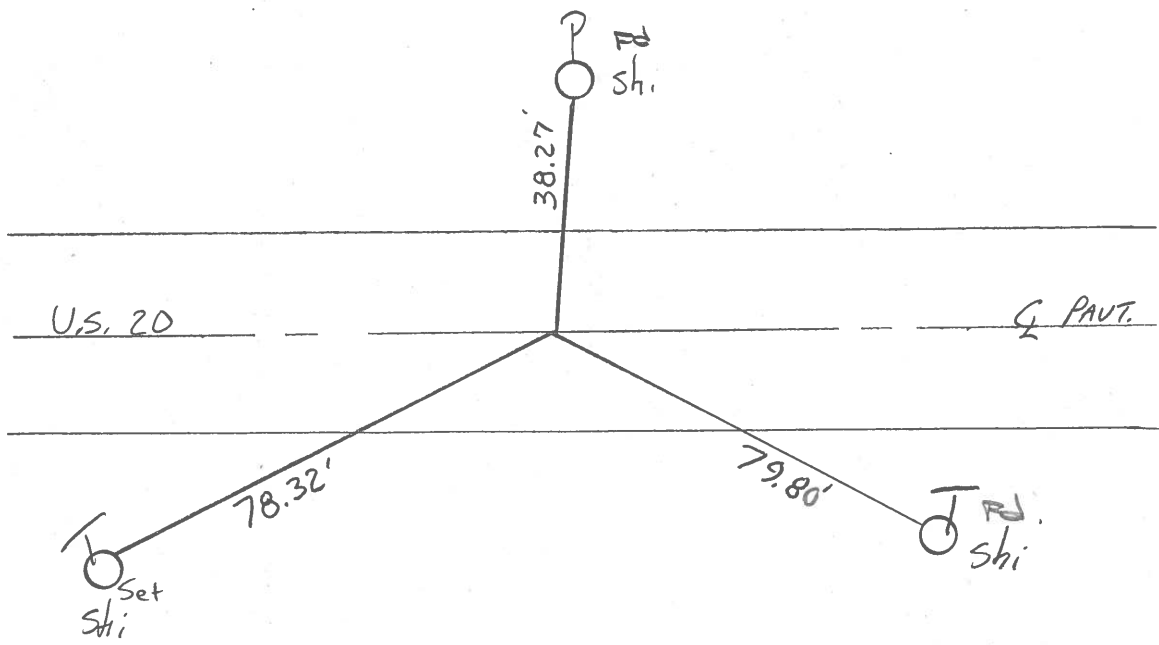
~~LEFT - & PAVT.~~ - RIGHT 0.6

11.6 TO Rt EDGE PAVEMENT

S.L.M. 137+20



Record 12-84  
Fd Square Bolt 4" Deep  
SV corner sec. 21



County Lucas S.R. US #20

Date 26 Dec. 84

Township Richfield

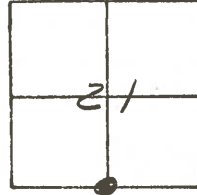
Weather Cold

Section 21

Temp. 28°

T N, R E

Personnel I. Stone

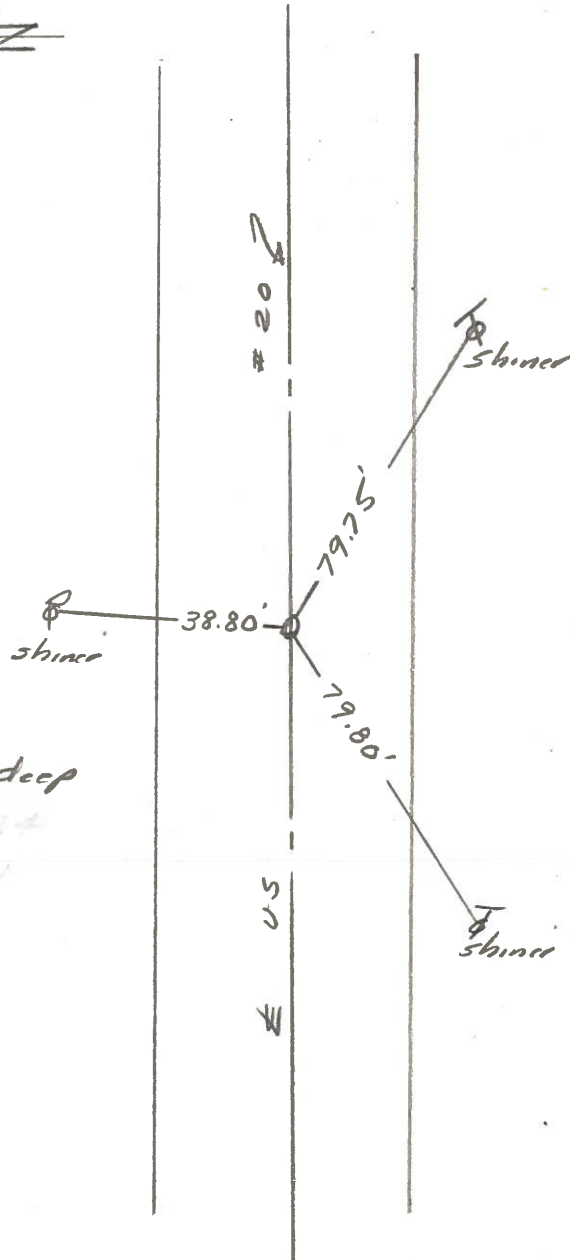


R. Michalak

J. Housholder

Sum

REF. NO. 6



Fd. Square Bolt 4" deep

S 1/4 Corner Sec. 21

S 1/4 Corner Sec. 21

County Lucas SR. US#20

Date 28 June 84

Township Richfield

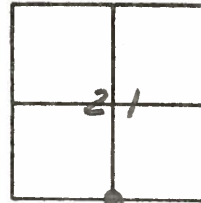
Weather Fair

Section 21-28

Temp. 73°

T N, R E

Personnel I. Stone



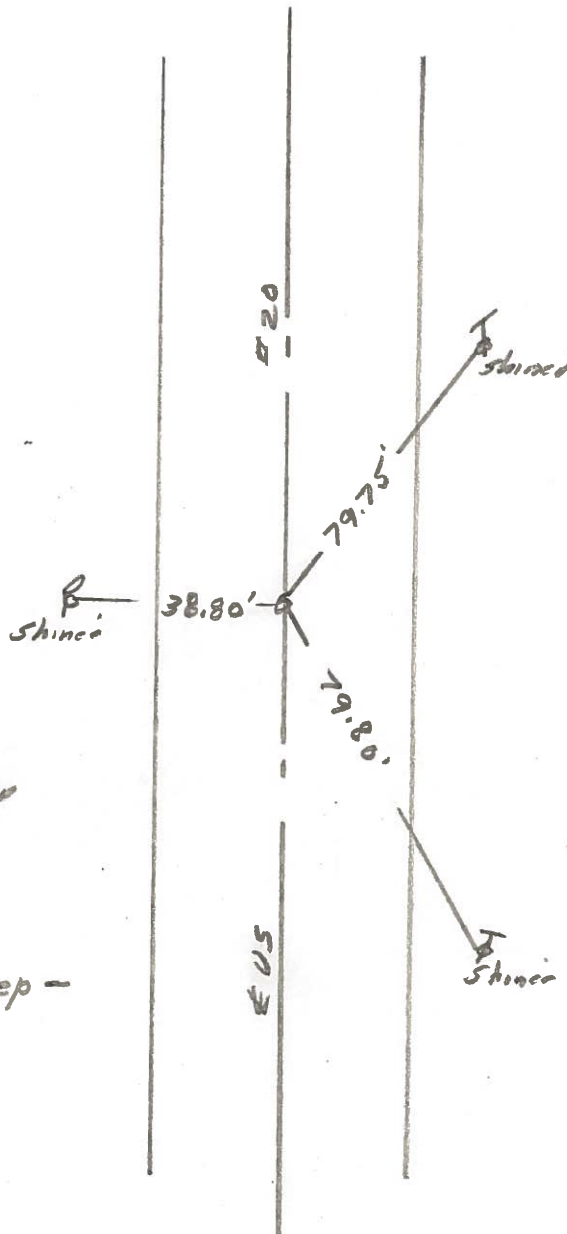
P. Neuse

R. Michalek

D. Coates

SLM Sta. 137+82

REF. NO. 6



Fd. square bolt 2" deep  
11.2' to S. edge put.  
13.1' to N. edge put.

Fd. Square bolt 4" deep -  
9-6-84

PERSONNEL TITLE PERSONNEL TITLE  
 W. DENND \_\_\_\_\_  
 D. STEVENS \_\_\_\_\_  
 R. BRANNAN \_\_\_\_\_

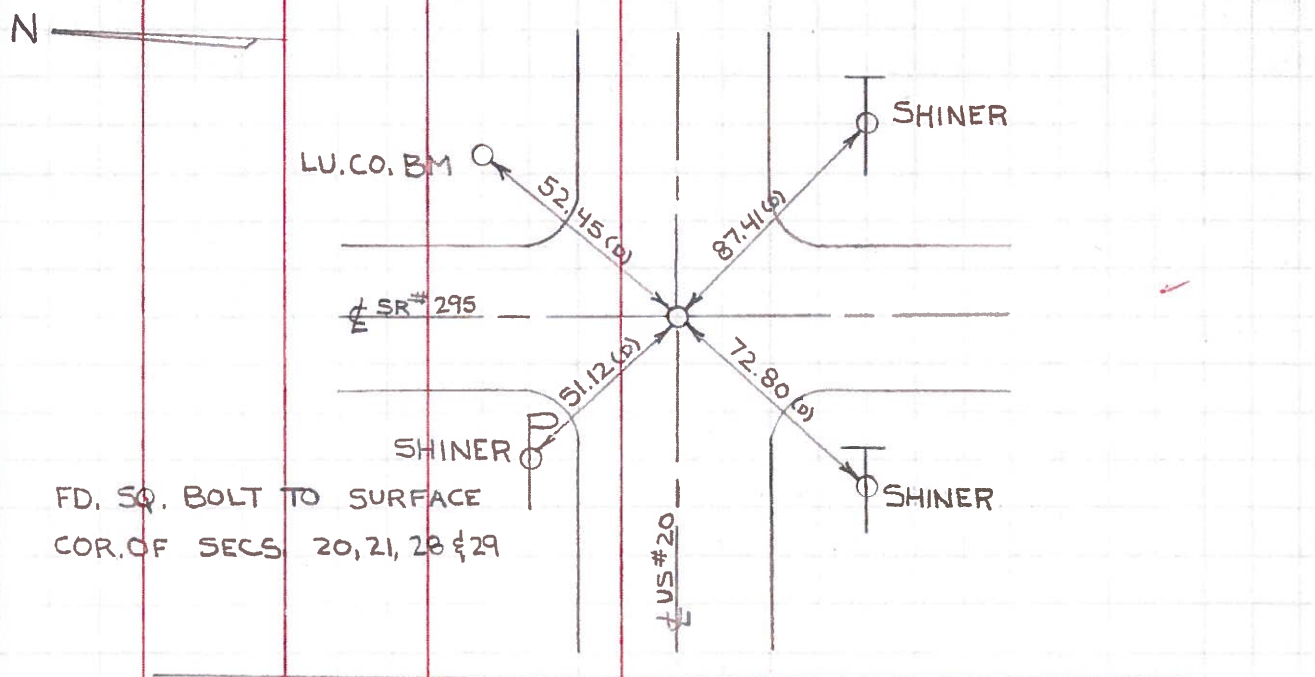
COUNTY LUCAS DATE JULY 29, 1971

S. R. US #20 WEATHER FAIR

SEC. TEMP. 75±

DESCRIPTION REFERENCES TO CONTROL POINTS  
 LEFT CENTER LINE RIGHT JOB NO.

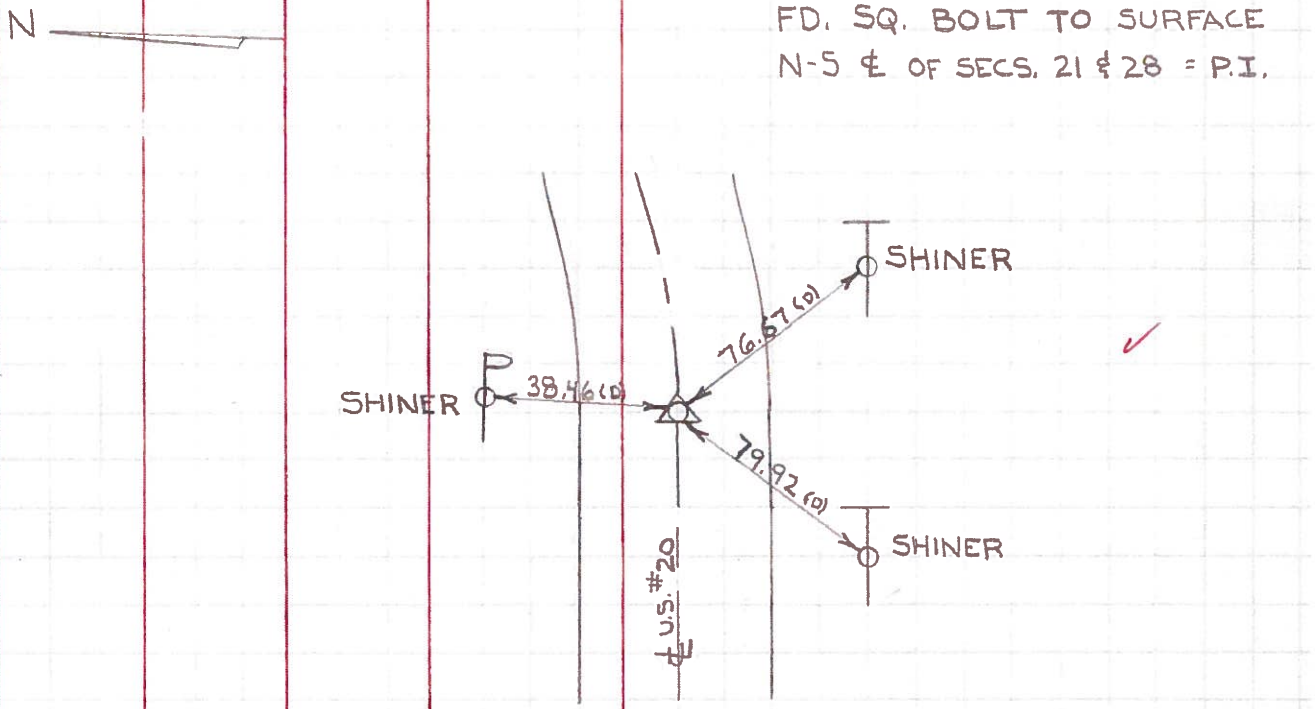
# 5



FD. SQ. BOLT TO SURFACE  
COR. OF SECS 20, 21, 28 & 29

FD. SQ. BOLT TO SURFACE  
N-5 & OF SECS. 21 & 28 = P.I.

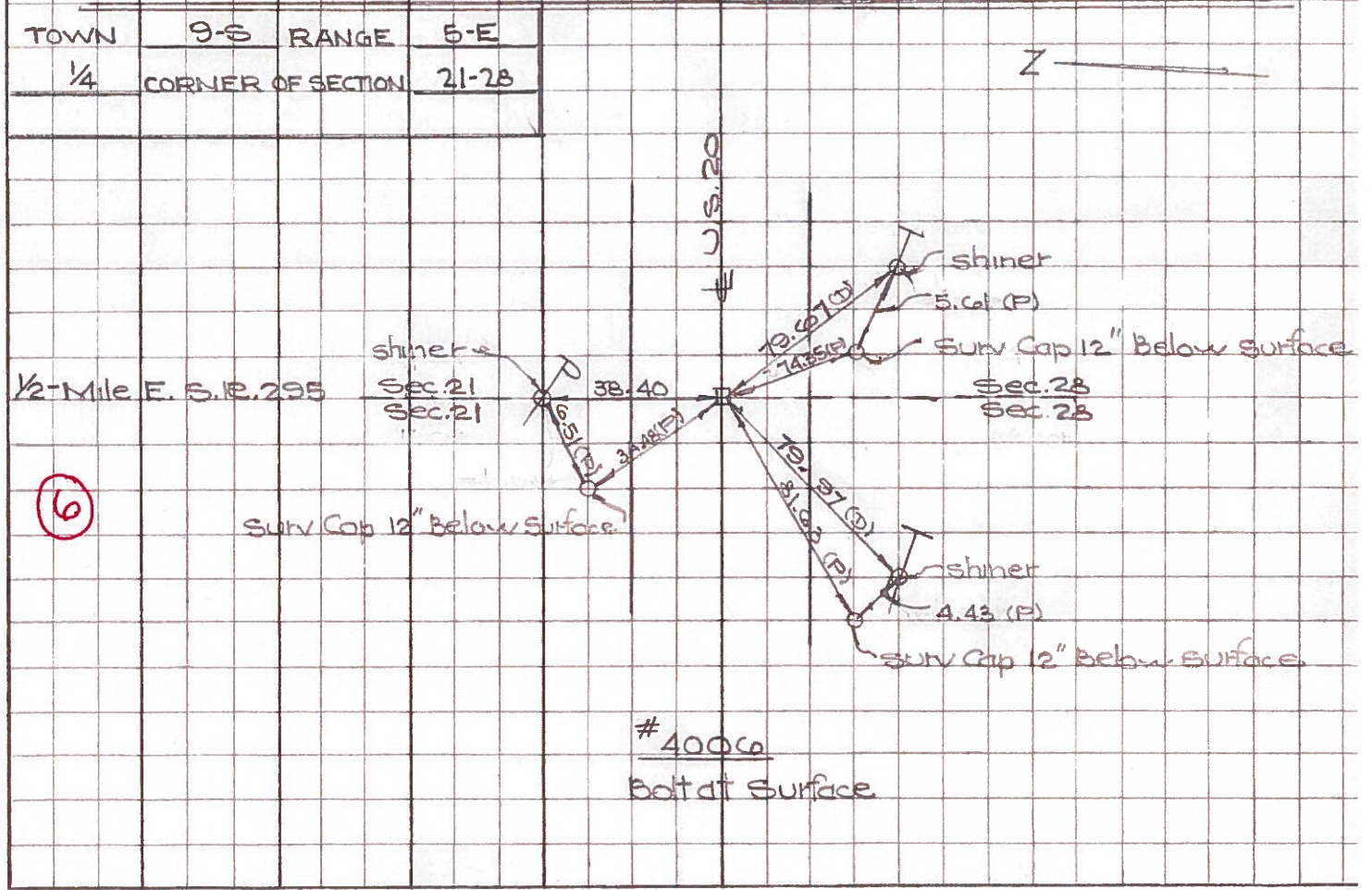
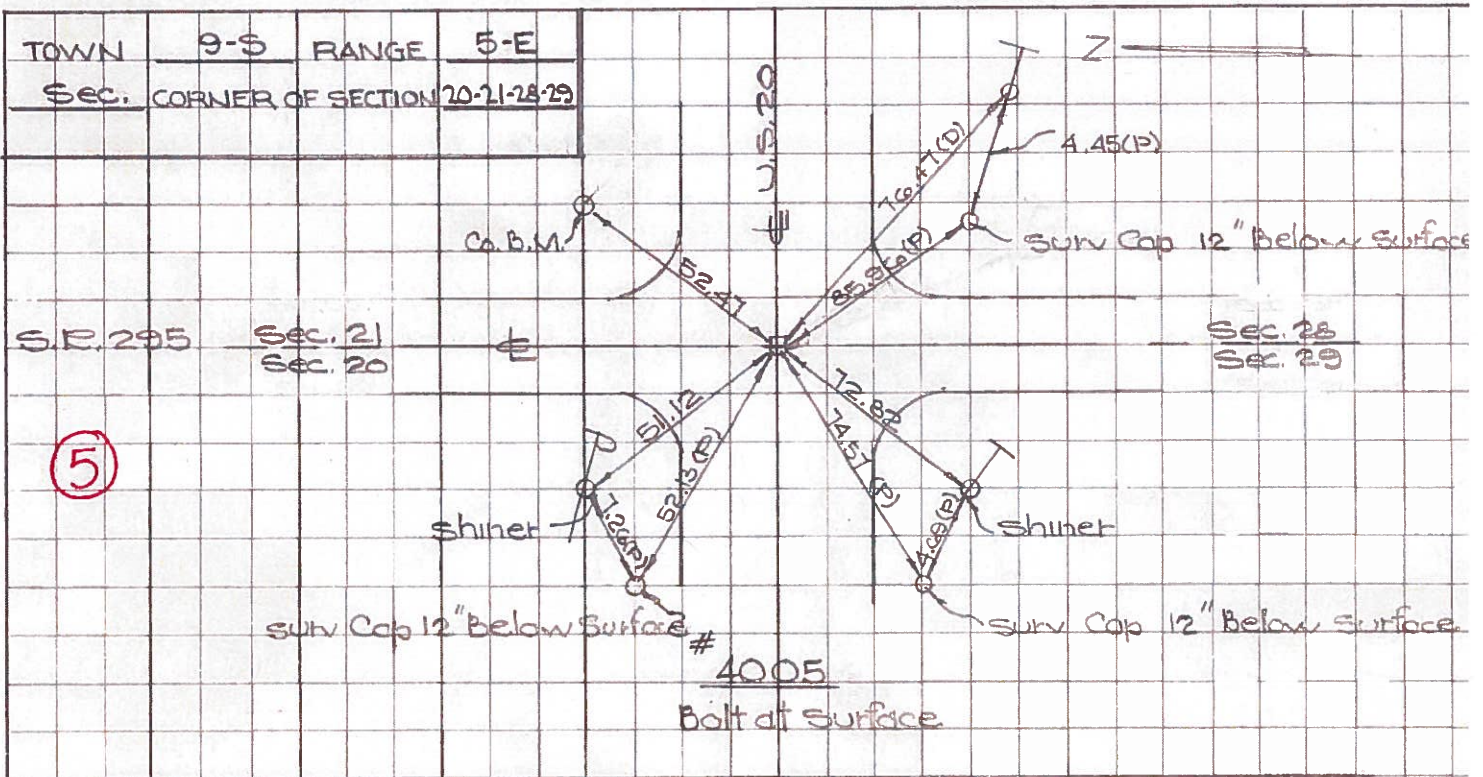
# 6



PERSONNEL TITLE PERSONNEL TITLE  
W. Denno \_\_\_\_\_  
J. Teal \_\_\_\_\_  
J. Bindley \_\_\_\_\_  
D. Curtis \_\_\_\_\_

COUNTY Lucas DATE May 2, 1966  
 S. R. 20 WEATHER mild  
 SEC. \_\_\_\_\_ TEMP. 65°±

DESCRIPTION U.S. 20 (Central Ave) - Ref. Mon. & Control Points JOB NO. 02994(6)

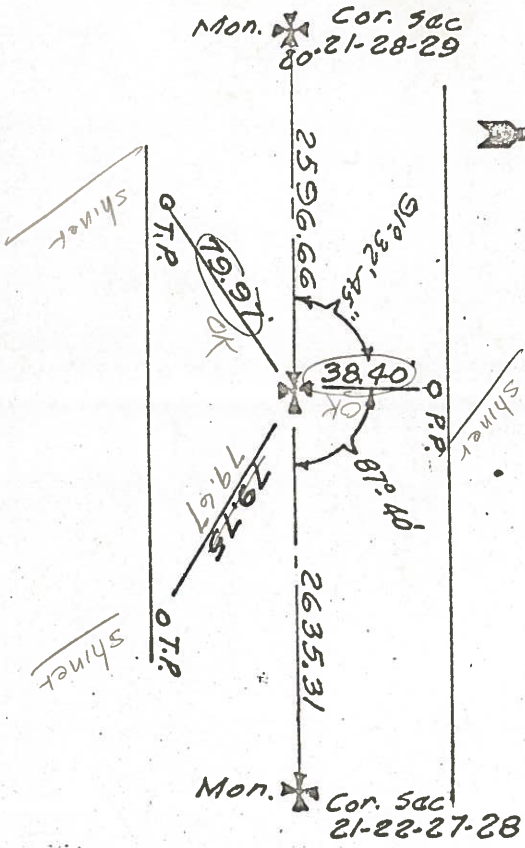


(5)

(6)

Town 95 Range 5E  
 1/4 Corner of Sections 21-28  
 Kind of Monument Mon. Remarks  
Bolt at surface  
 FOUND 3/15/67 BY GUST  
 N. & S. Road 1/2 Mile E. Berkeley-Southern R. B. P.  
 E. & W. Road Central Ave F. B. P.

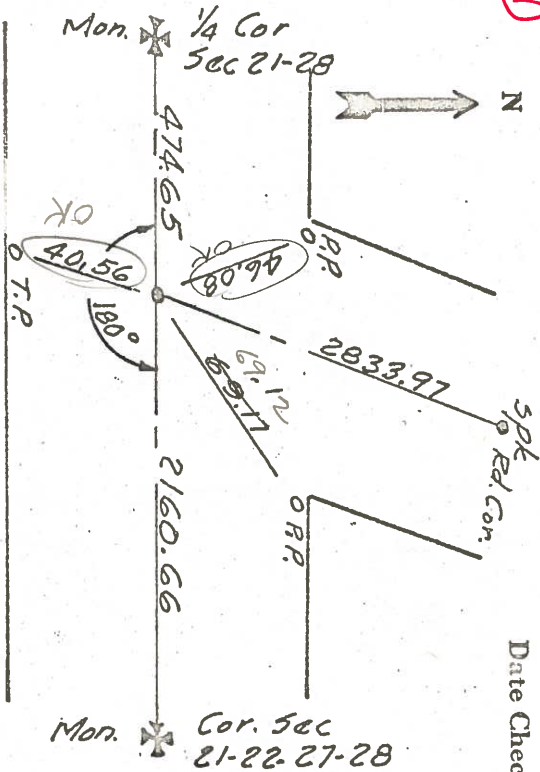
Date Checked:  
 1850 Loughan Rd Gov. Wy  
 1860 White Rd. Stone  
 1927 Wilson



4006

Town 95 Range 5E  
 1/4 Corner of Sections 21-28  
 Kind of Monument Bolt Remarks  
P.K. Nail  
 FOUND 3/14/67 BY GUST  
 N. & S. Road Richfield Center Rd F. B. 595 P. 48  
 E. & W. Road Central Ave F. B. P.

Date Checked:



4007

PERSONNEL TITLE PERSONNEL TITLE

COUNTY Lucas DATE 3-10-53

S. R. U.S.#20 WEATHER

SEC. \_\_\_\_\_ TEMP. checked 9/18/58

DESCRIPTION Central Ave. JOB NO Bowerman

Checked 8/4/60  
D. Ruff

LEFT	CENTER LINE	RIGHT
<p>①</p> <p>Fulton Lucas Rd. P. Kinard Iron Bolt</p> <p>#40 ✓</p>		<p>N.E. to witness man. 40.86</p> <p>S.W. to witness man. 69.31</p> <p>S.E. to T. in N.W. corner of C.B. 65.3</p> <p>N.W. to shiner in T.P. 60.0</p>
<p>②</p> <p>5/4 cor. sec. 19 Bolt Spk</p> <p>#41 ✓</p>	67.28	<p>40.36' N. To Shi. in T. Pole</p> <p>67.22' N.W. To Shi. F. Post (4<sup>th</sup>)</p> <p>40.24' S. To Shi. in A. Post.</p>
<p>③</p> <p>Int. Lathrop &amp; Central 59+25.64 Bolt Spk. (did not find)</p> <p>#42 ✓</p>		<p>110.91' S.E. To N.W. Cor. Tavern</p> <p>50.23' N.W. To Shi. in P. Pole</p> <p>48.62' N.E. To &amp; Sen. B.M. Man.</p> <p>66.43' S.W. To Nail in E. Side 36" E</p>
<p>④</p> <p>South 1/4 cor. sec. 20 - R5B P.K. Bolt Spk</p> <p>#43 ✓</p>		<p>S.W. to R.R. spt. in 24" maple 77.15</p> <p>S.E. to shiner in 18" maple 39.20</p> <p>N. to R.R. spike in P.P. 38.5</p> <p>S.E. To R.R. Spk. 18" Maple 39.0</p>
<p>⑤</p> <p>Int. Berkeley Southern Brass Plate in Conc. Bolt Spk.</p> <p>#44 ✓</p>		<p>N.E. To Lucas Co. B.M. Centerhole 52</p> <p>N.W. To Shiner in P. Pole 48.80</p> <p>S.W. To Shiner in T. Pole 72.8</p> <p>S.E. To Shiner in T. Pole 76.5</p> <p>90.37</p>
<p>⑥</p> <p>South 1/4 cor. sec. 21 E5E. Bolt Spk</p> <p>#45 ✓</p>	<p>Plumbed {</p> <p>33.60</p> <p>43.73</p> <p>38.43</p> <p>79.75</p> <p>79.97</p>	<p>S. to witness man. 33.6</p> <p>N.W. to witness man. 43.6</p> <p>N. to tack in P.P. 38.4</p> <p>Shiner in T.P. ESE</p> <p>" " " " SW</p>