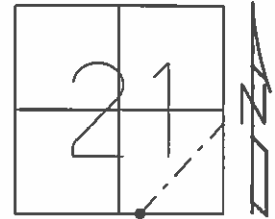


O.D.O.T. DISTRICT 2 SURVEY OFFICE (USE ONLY)

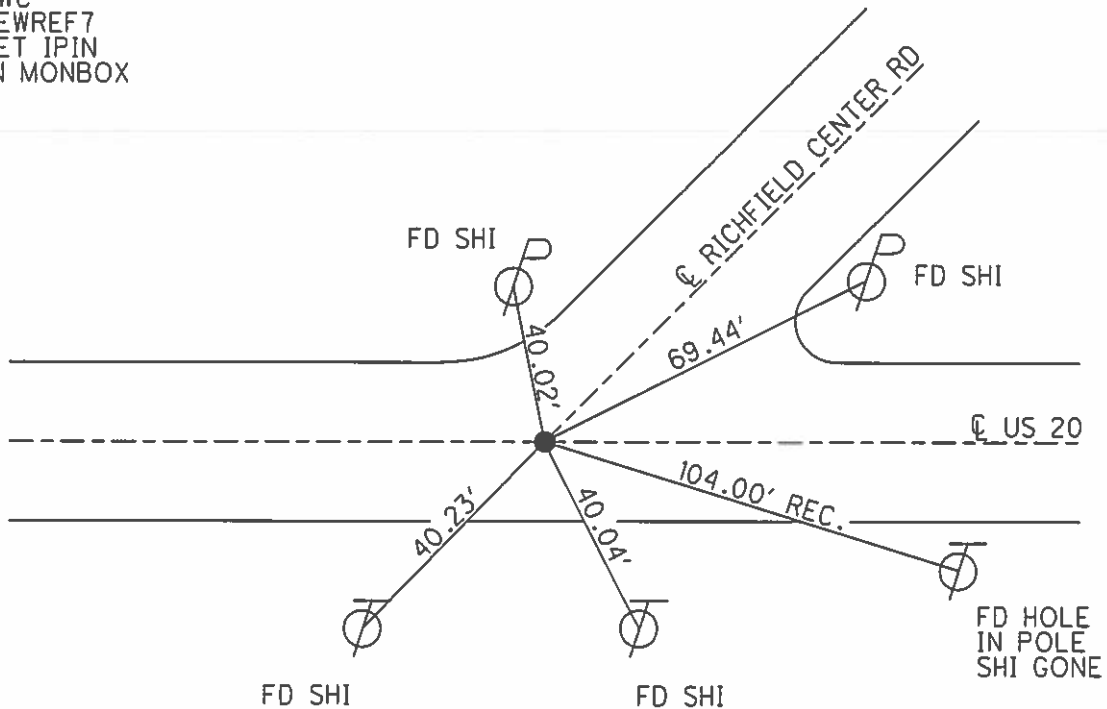
PERSONNEL \_\_\_\_\_ REFERENCE NO. 7 SHEET 9 OF 36  
 NOTES LEU DATE 08/23/16 ROUTE US 20  
 H.C. HOMAN WEATHER SUNNY COUNTY LUCAS  
 R.C. LEU TEMP. 71° TOWNSHIP RICHFIELD  
 \_\_\_\_\_ SECTION 21  
 \_\_\_\_\_ T 9 S R 5 E

TYPE MONUMENT \_\_\_\_\_ FD PK/W \_\_\_\_\_  
 ON SURFACE - ~~BELOW~~ \_\_\_\_\_ ON \_\_\_\_\_  
 LEFT - ~~C PAV'T~~ - RIGHT \_\_\_\_\_ 0.5' \_\_\_\_\_  
13.3' TO RT EDGE PAVEMENT  
 S.L.M. \_\_\_\_\_ 142+02 \_\_\_\_\_



Grid: Northing: 733623.456 Easting: 1605994.905

SET PK/WASHER  
 12/18/97  
 BWC  
 NEWREF7  
 SET IPIN  
 IN MONBOX



# O.D.O.T. DISTRICT 2 SURVEY OFFICE

PERSONNEL

REFERENCE NO. 7

SHEET 8 OF 22

NOTES CORDES

H.C. VAN BUSEN

R.C. HUSS

DATE 6-25-97

WEATHER Sunny

TEMP. +80

ROUTE U.S. 20

COUNTY LUCAS

TOWNSHIP Richfield

SECTION 21

T9 S R 5 E

Set P.K./WASHER  
12-18-97  
BWC

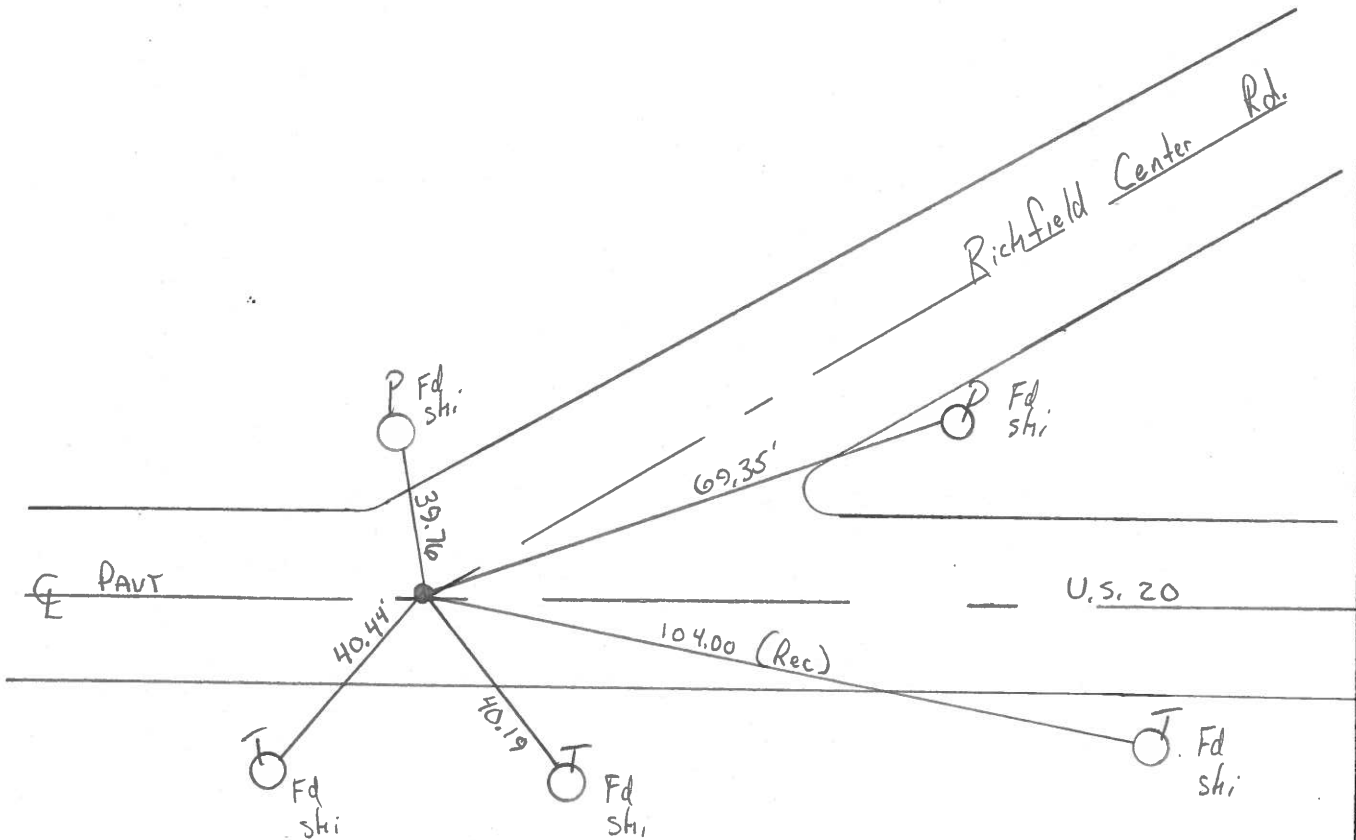
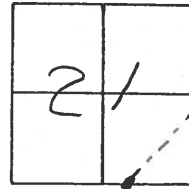
TYPE MONUMENT Pk. Shank

ON SURFACE - ~~BELOW~~ Yes

LEFT - ~~C~~ PAV'T. - ~~RIGHT~~ 0.5'

13.8' TO Rt EDGE PAVEMENT

S.L.M. 142 +02



County Lucas S.R. US #20

Date 26 Dec. 84

Township Richfield

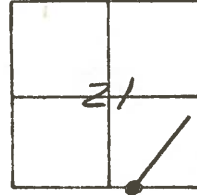
Weather Cold

Section 21

Temp. 28°

T\_N, R\_E

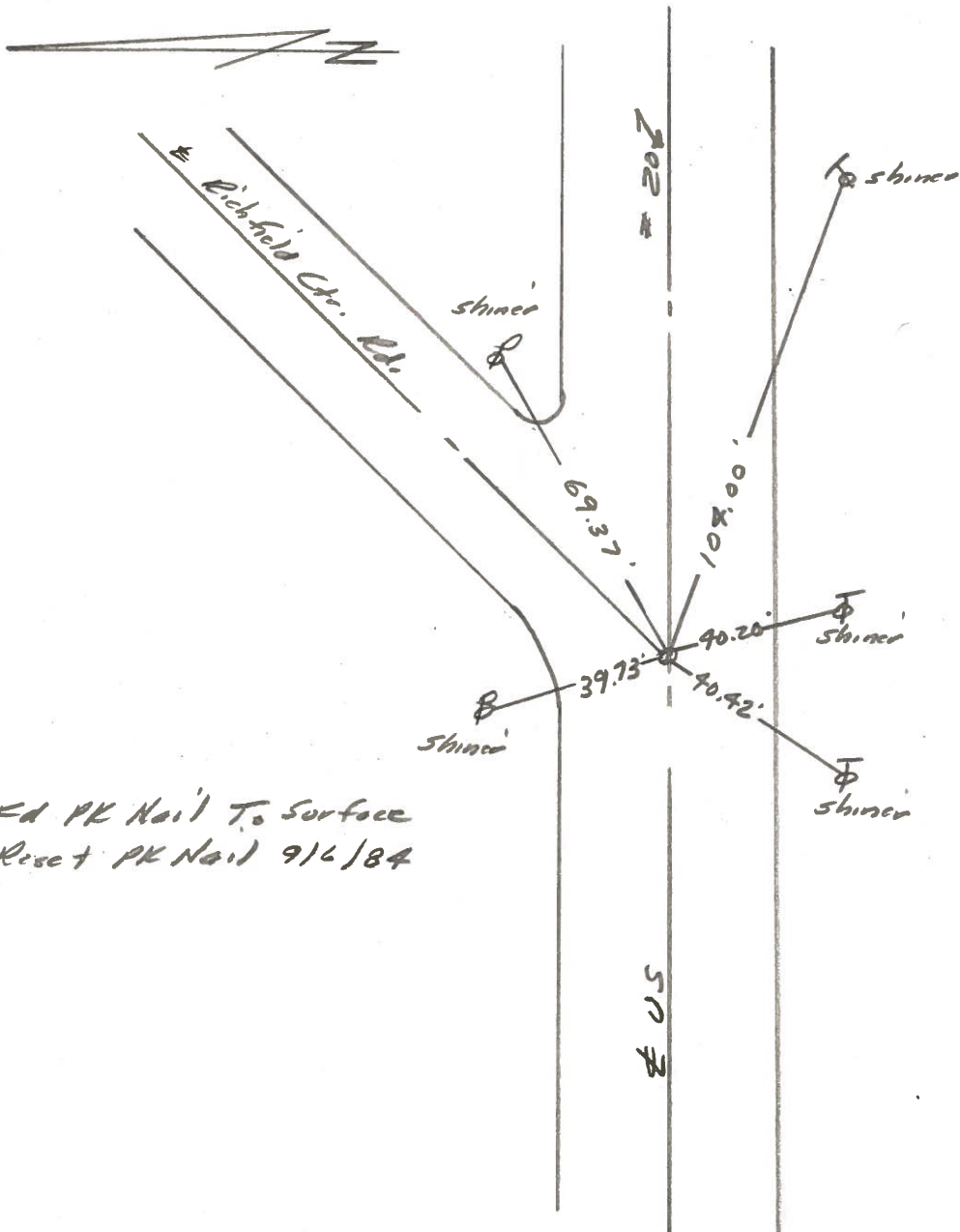
Personnel J. Stone



R. Michalak

J. Householder

REF. NO. 7



Fd PK Nail To Surface  
Reset PK Nail 9/6/84

County Lucas SR. 05#20

Date 28 June 84

Township Richfield

Weather Fair

Section 21

Temp. 73°

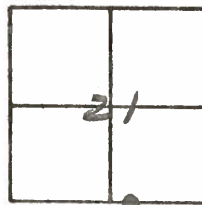
T\_N, R\_E

Personnel J. Stone

P. Neuser

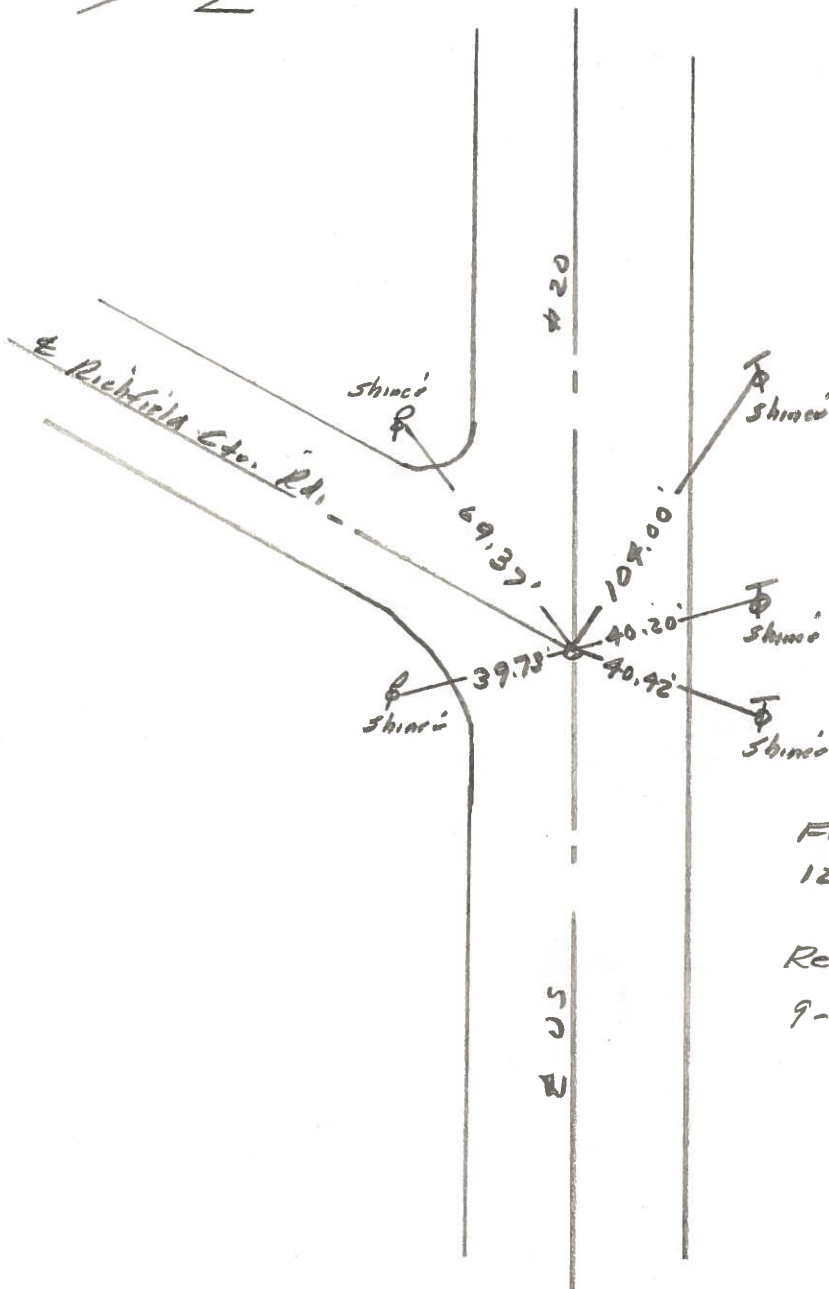
R. Michalak

D. Curtis



5614 Sta. 142456

REF. NO. 7



Ed. PK Nail To Surface  
12.6' to S. edge put.

Reset P.K. Nail To Surface -  
9-6-84

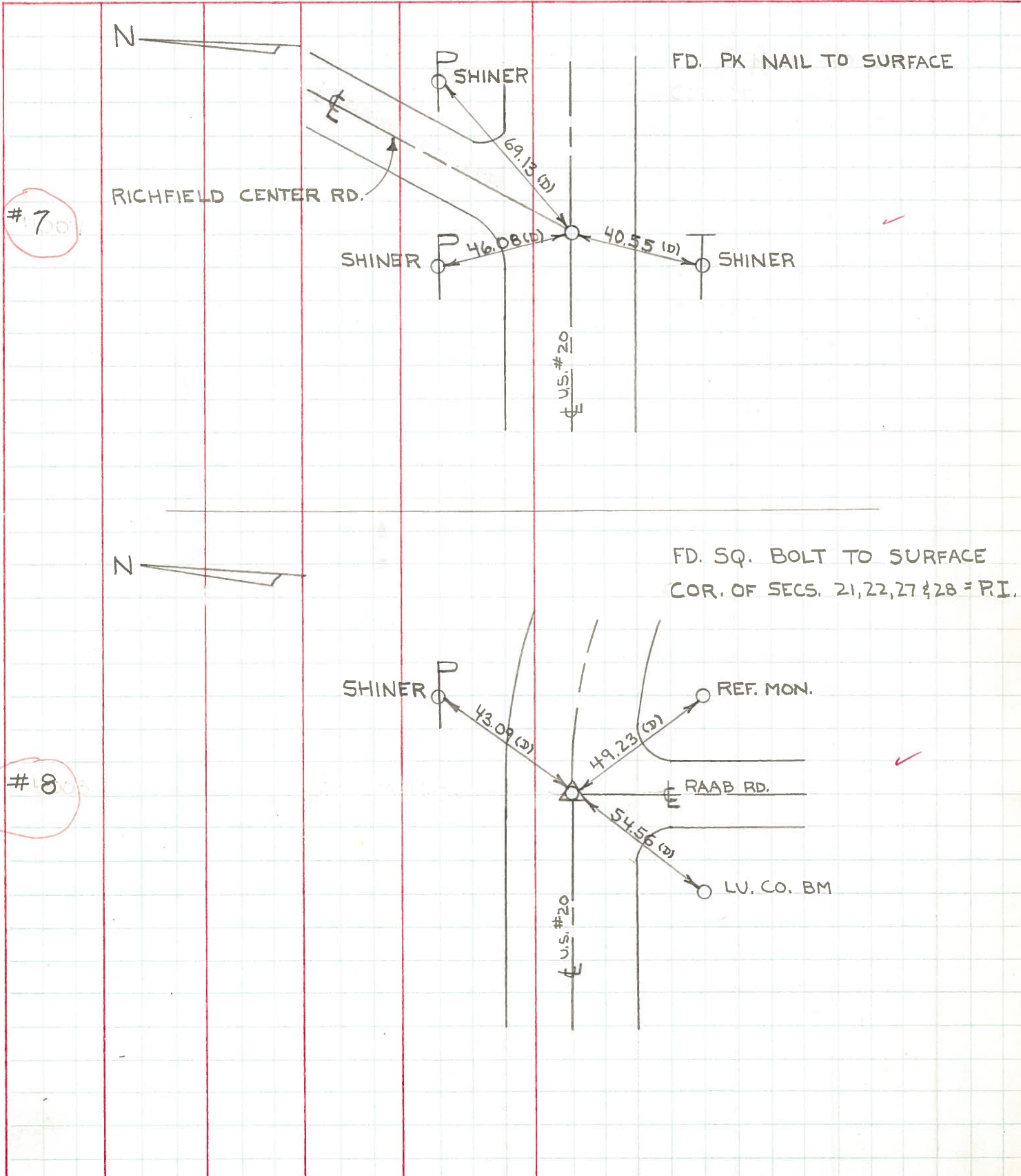
PERSONNEL TITLE PERSONNEL TITLE  
 W. DENNO \_\_\_\_\_  
 D. STEVENS \_\_\_\_\_  
 R. BRANNAN \_\_\_\_\_

COUNTY LUCAS DATE JULY 29, 1971

S. R. U.S. #20 WEATHER FAIR

SEC. \_\_\_\_\_ TEMP. 75°

DESCRIPTION REFERENCES TO CONTROL POINTS LEFT CENTER LINE RIGHT JOB NO. \_\_\_\_\_



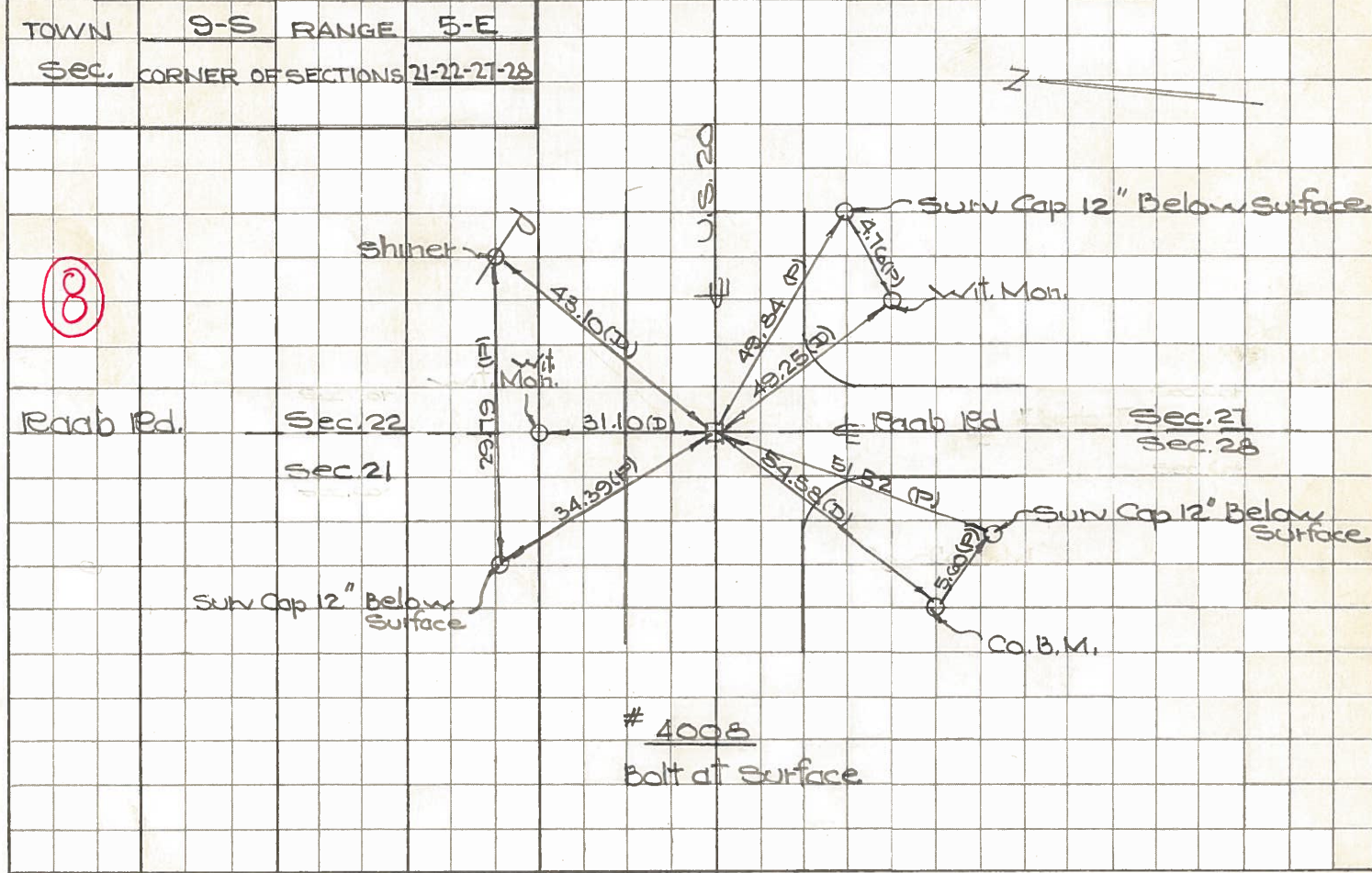
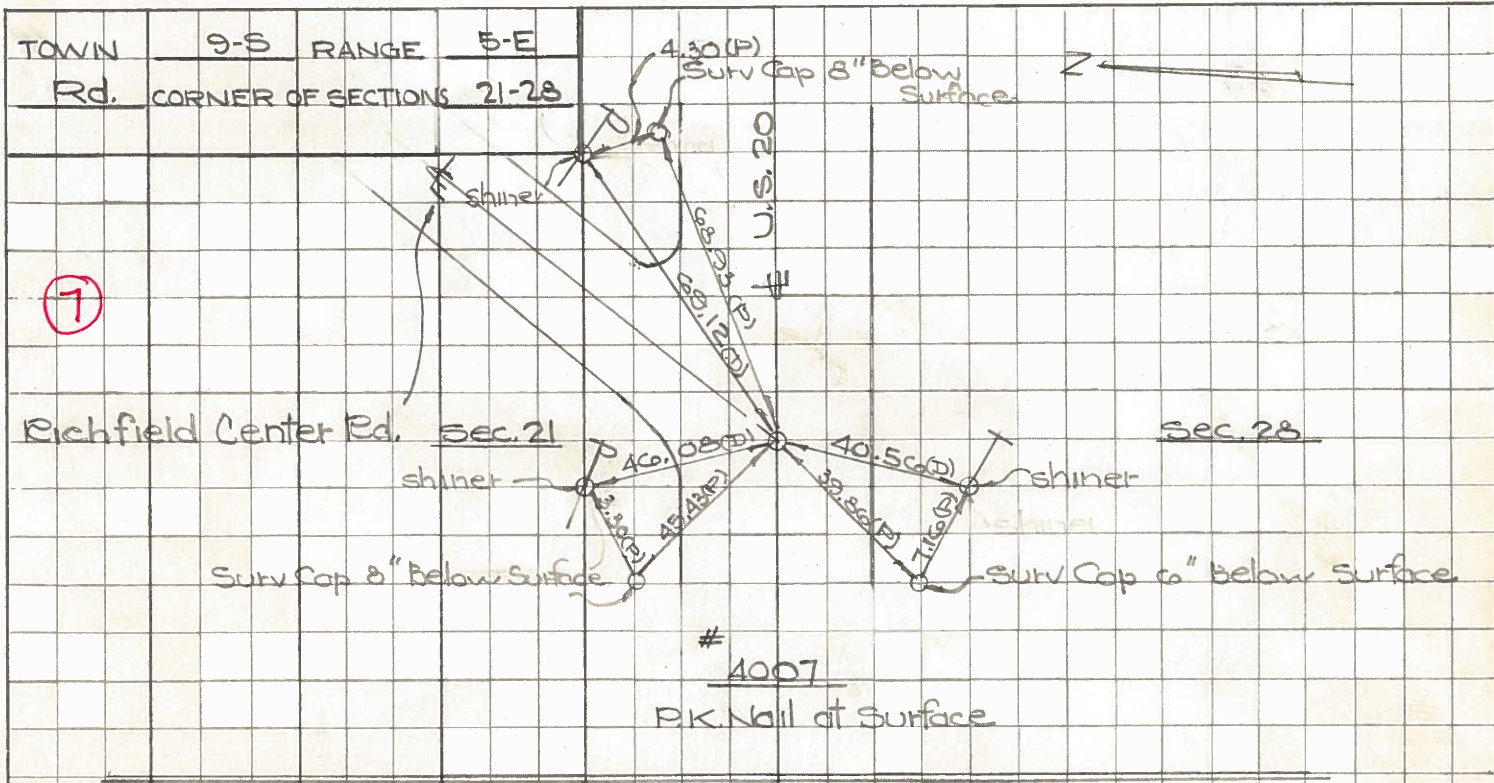
#7

#8

PERSONNEL TITLE PERSONNEL TITLE  
 W. Deanna \_\_\_\_\_  
 J. Teal \_\_\_\_\_  
 J. Brindley \_\_\_\_\_  
 D. Curtis \_\_\_\_\_

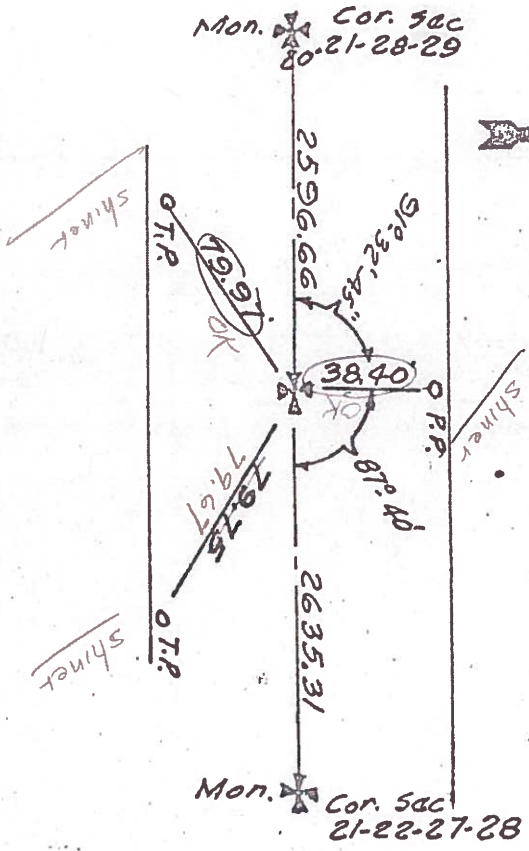
COUNTY Lucas DATE May 2, 1968  
 S. R. 20 WEATHER mild  
 SEC. \_\_\_\_\_ TEMP. 65° ±

DESCRIPTION U.S. 20 (Central Ave) - Ref. Mon. & Control Points JOB NO. 02994(0)



Town 95 Range 5E  
 1/4 Corner of Sections 21-28  
 Kind of Monument Mon. Remarks  
Bolt at surface  
 FOUND 3/15/67 BY GUST  
 N. & S. Road 1/2 Mi. E. of Berkeley-Southern F. B. P.  
 E. & W. Road Central Ave F. B. P.

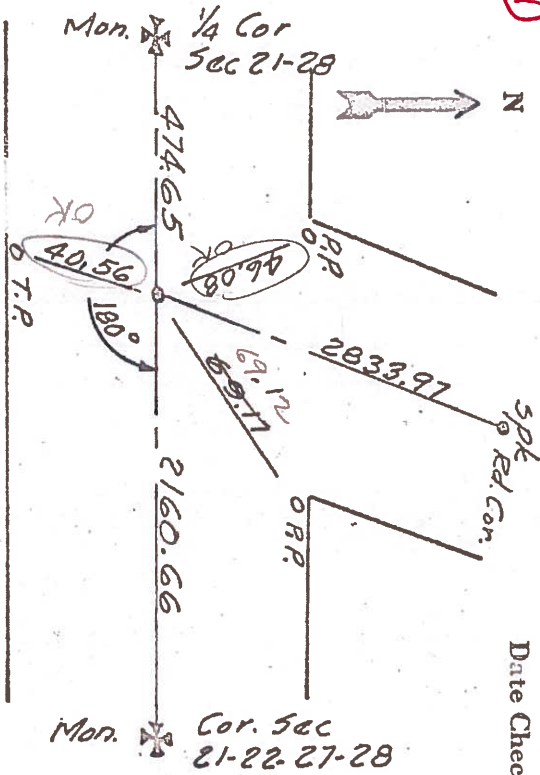
(6) N  
 Date Checked:  
 1850 Laughton Rd. Gov. Wy  
 1860 White Fel. Stora  
 1927 Wilson



4006

Town 95 Range 5E  
 1/4 Corner of Sections 21-28  
 Kind of Monument Bolt Remarks P.K. 10.1  
 FOUND 3/14/67 BY GUST  
 N. & S. Road Bickfield Center Rd F. B. 595 P. 48  
 E. & W. Road Central Ave F. B. P.

(7) N  
 Date Checked:



4007