

O.D.O.T. DISTRICT 2 SURVEY OFFICE (USE ONLY)

PERSONNEL _____ REFERENCE NO. 11 SHEET 13 OF 36
 NOTES LEU DATE 08/23/16 ROUTE US 20
 H.C. HOMAN WEATHER SUNNY COUNTY LUCAS
 R.C. LEU TEMP. 78° TOWNSHIP RICHFIELD
 _____ SECTION 22
 _____ T 9 S R 5 E

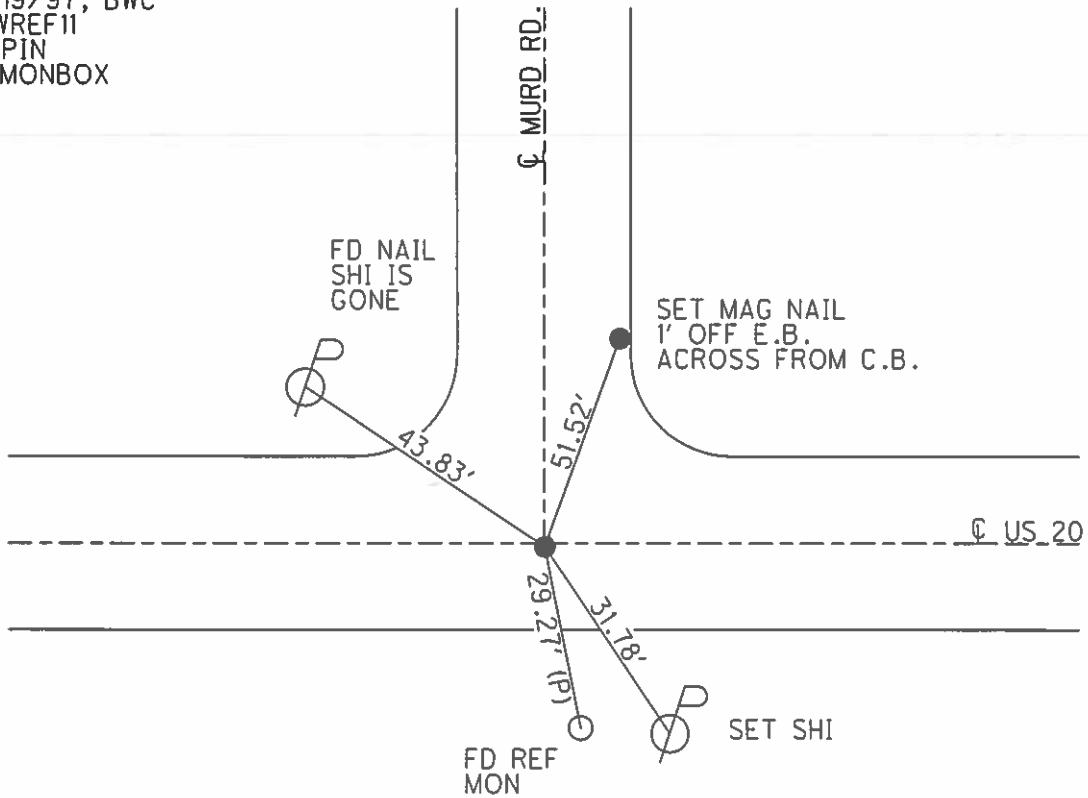
TYPE MONUMENT FD PK/W
 ON SURFACE - ~~BELOW~~ ON
~~LEFT - C PAV'T~~ - RIGHT 1.1'
11.7 TO RT EDGE PAVEMENT
 S.L.M. 215+26

22	23
27	26



Grid: Northing: 733715.692 Easting: 1613310.127

FD SQUARE BOLT 2" DEEP
 1984
 SET PK/WASHER
 12/19/97, BWC
 NEWREF11
 1" IPIN
 IN MONBOX



O.D.O.T. DISTRICT 2 SURVEY OFFICE

PERSONNEL

REFERENCE NO. 11

SHEET 12 OF 22

NOTES CORDES

H.C. VAN DUSEN

DATE 6-25-97

ROUTE US#20

R.C. HUSS

WEATHER Sunny

COUNTY LUCAS

TEMP. +82°F

TOWNSHIP Sylvania

Set P.K. / WASHER

SECTION 22

12-19-97

T 9 S R 5 E

BWC.

TYPE MONUMENT SHANK OF Sm R.R. Spike

ON SURFACE - ~~BELOW~~ Yes

~~LEFT~~ - C PAV'T. - RIGHT 1.1' Rt

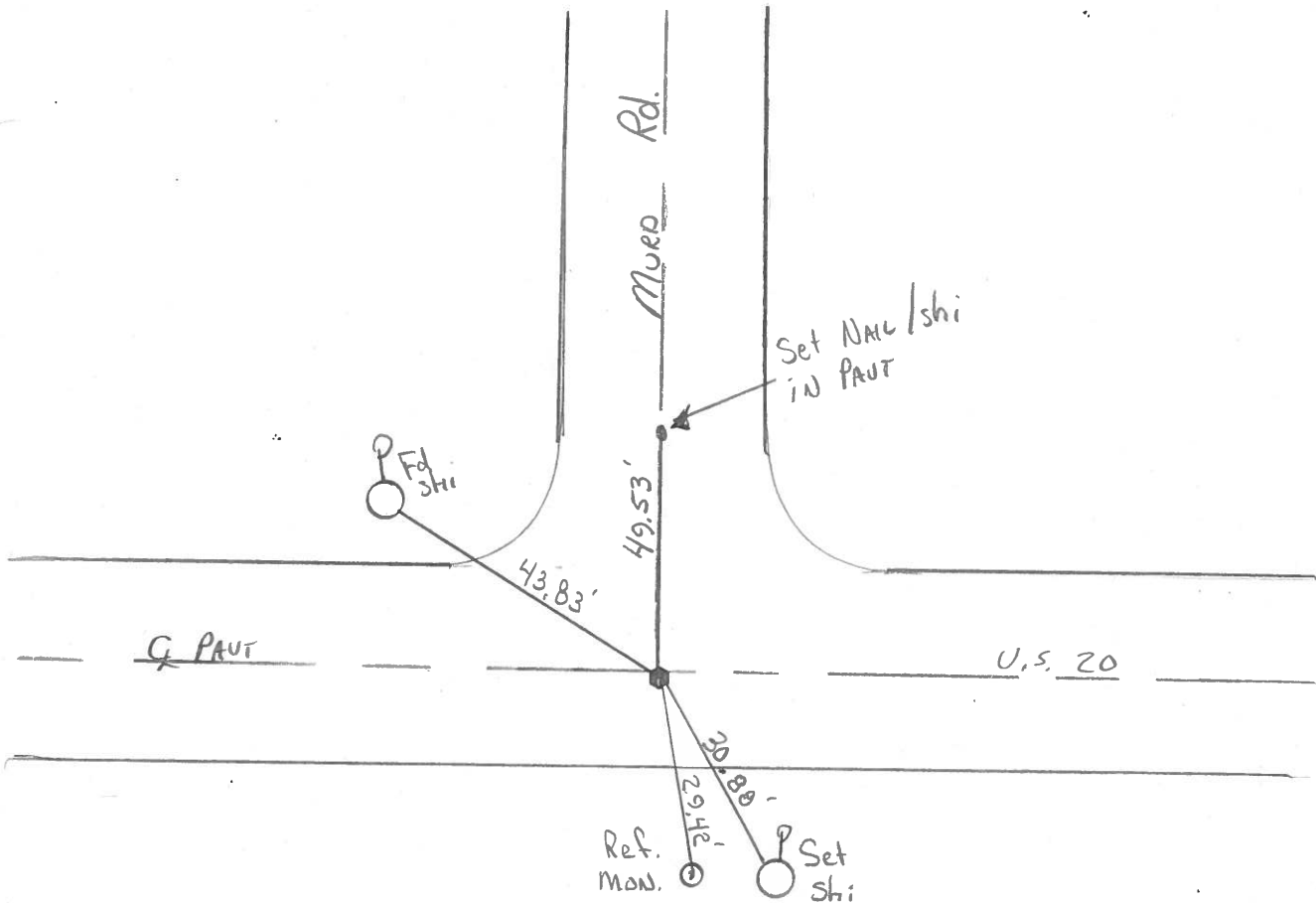
11.7 TO Rt EDGE PAVEMENT

S.L.M. 215+26

22	23
27	26



Fd square bolt 2" deep - 1984



ODOT DISTRICT 2 SURVEY OFFICE

SHEET 12 OF

County Lucas SR US#20

Date 28 June 84

Township Richfield

Weather Fair

Section 22-23-26-27

Temp. 75°

T N, R E

Personnel L. Stone

22	23
27	26



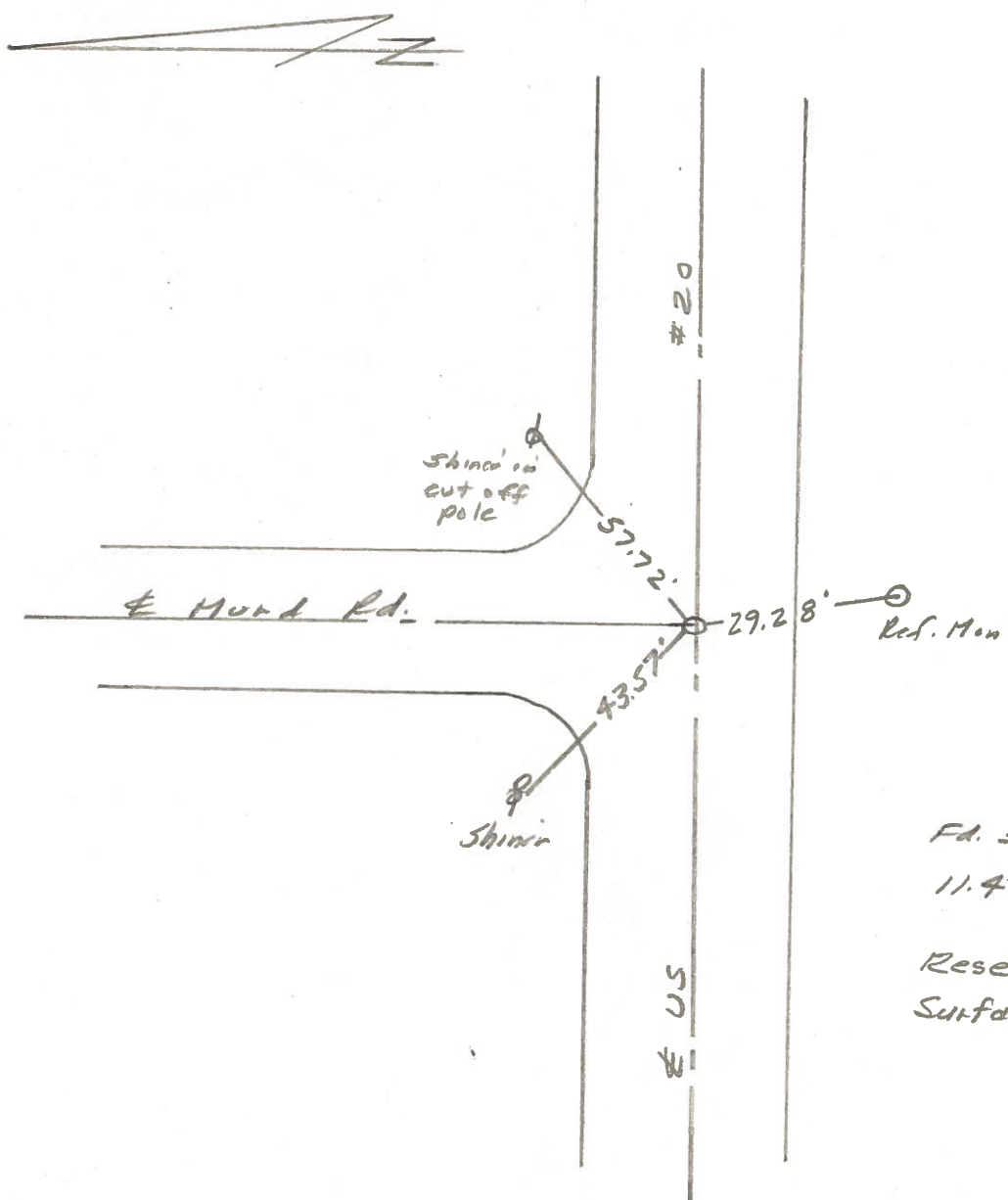
P. Heuser

R. Michalek

D. Curtis

SLM STA. 215+76

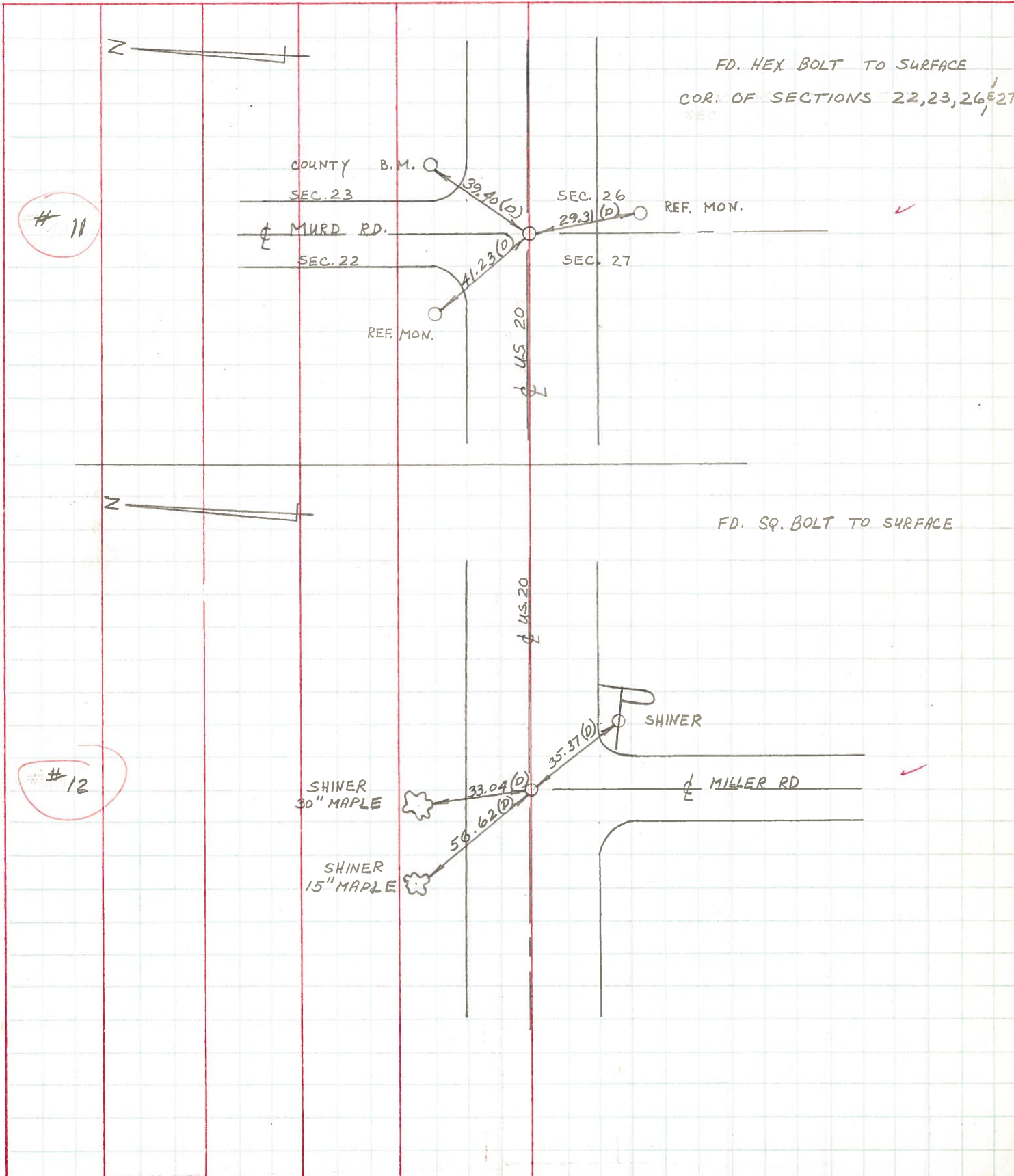
REF. NO. 11



Fd. square bolt 2" deep
11.4' to S. edge put.
Reset Small R.R. Spk. to
Surface - 9-6-84

PERSONNEL	TITLE	PERSONNEL	TITLE	COUNTY	DATE	WEATHER	TEMP.
W. DENNO				LUCAS	30 JULY 71	RAIN	60±
D. STEVENS				U.S. 20			
R. BRANNAN							

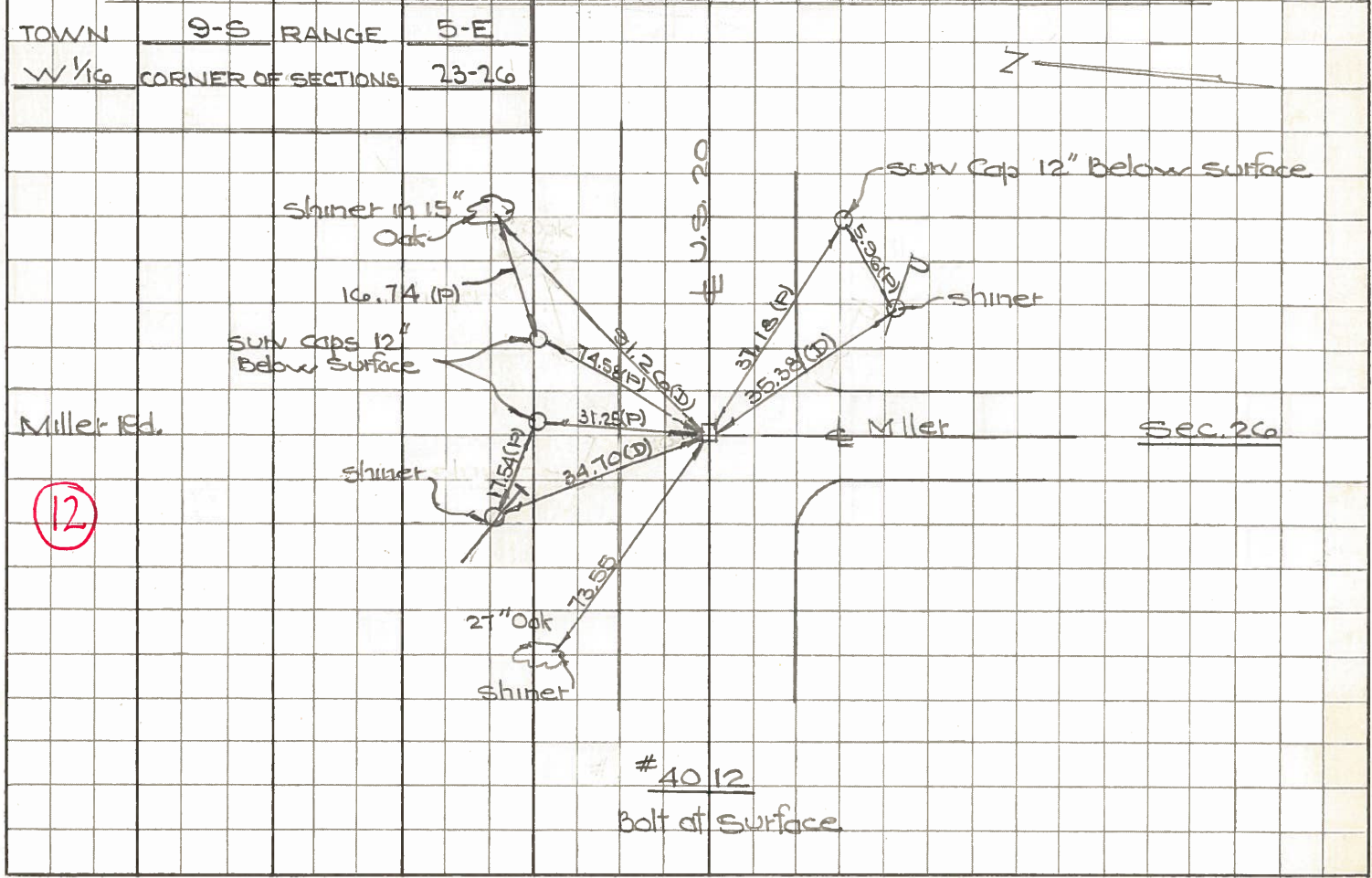
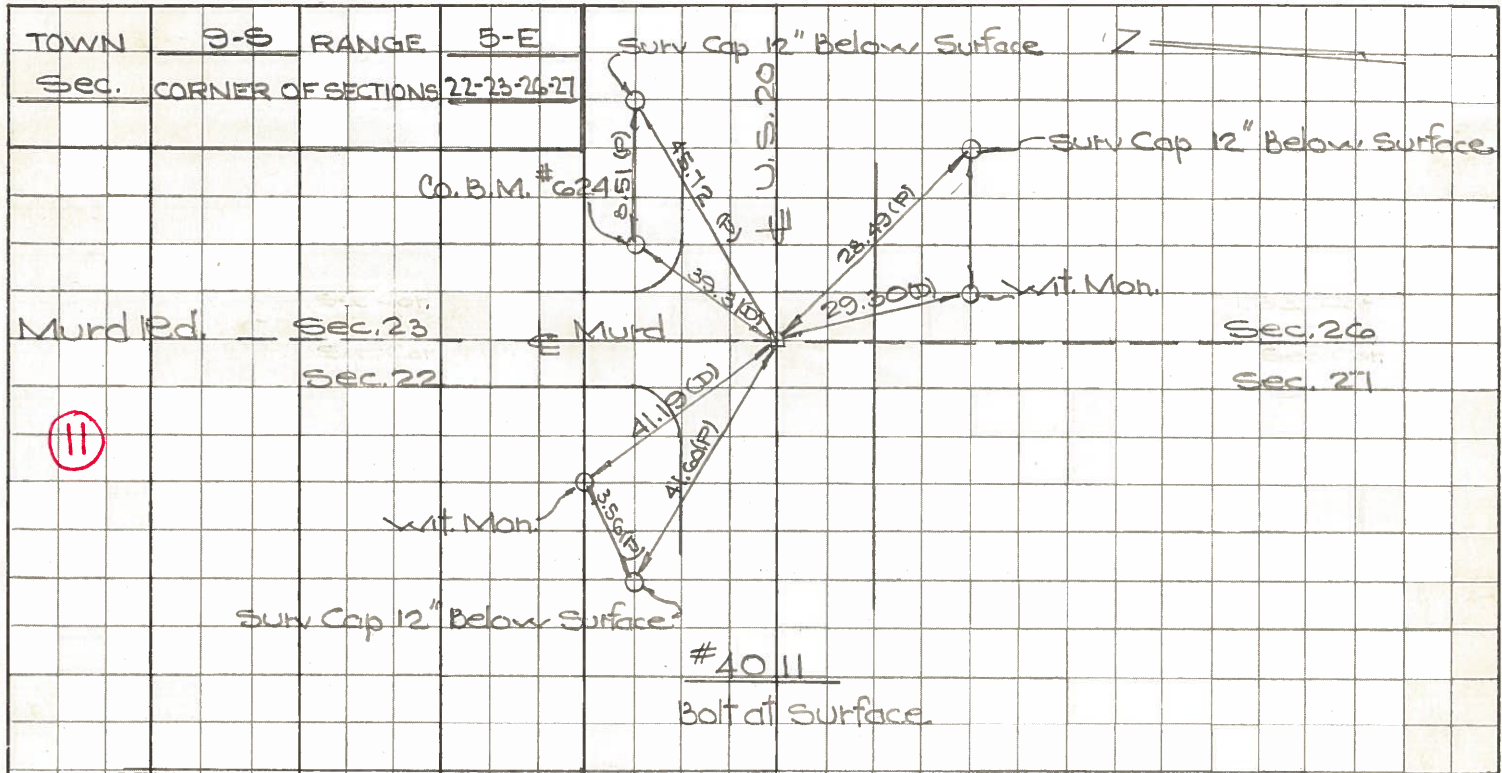
DESCRIPTION	REFERENCES TO CONTROL POINTS	JOB NO.
	LEFT CENTER LINE RIGHT	



PERSONNEL TITLE PERSONNEL TITLE
D. Curtis _____
J. Teal _____
J. Brindley _____

COUNTY Lucas DATE May 3, 1968
 S. R. 20 WEATHER mild
 SEC. _____ TEMP. 65°±

DESCRIPTION U.S. 20 (Central Ave) - Ref. Mon. & Control Points JOB NO. 02994(0)
 LEFT CENTER LINE RIGHT



11

12

Town 9S Range 5E

Sec. Corner of Sections 22-23-26-27

Kind of Monument Mon. Remarks

OK Bolt at surface

FOUND 4/6/67 BY GUST

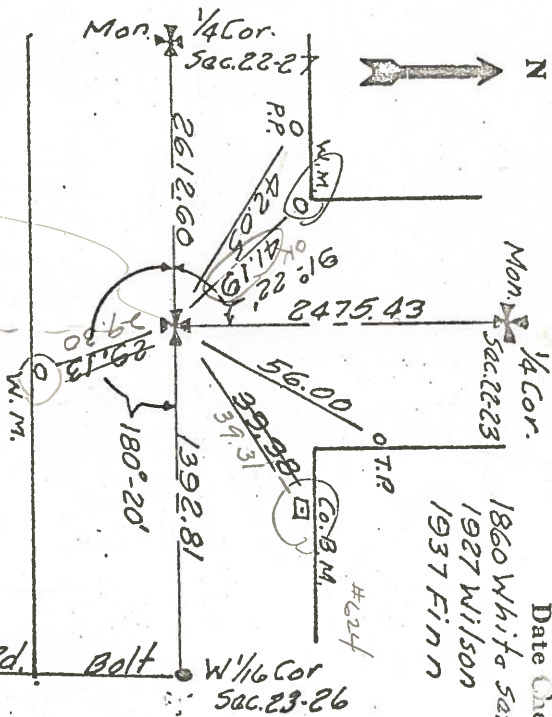
N. & S. Road Murd Rd. F. B. P.

E. & W. Road Central Ave F. B. P. P.

(11)

Date Checked:

1860 White Sat stake
1927 Wilson
1937 Finn



(4010-Co. Does Not Have)

4011

Town 9S Range 5E

W 1/6 Corner of Sections 23-26

Kind of Monument Bolt Remarks

OK

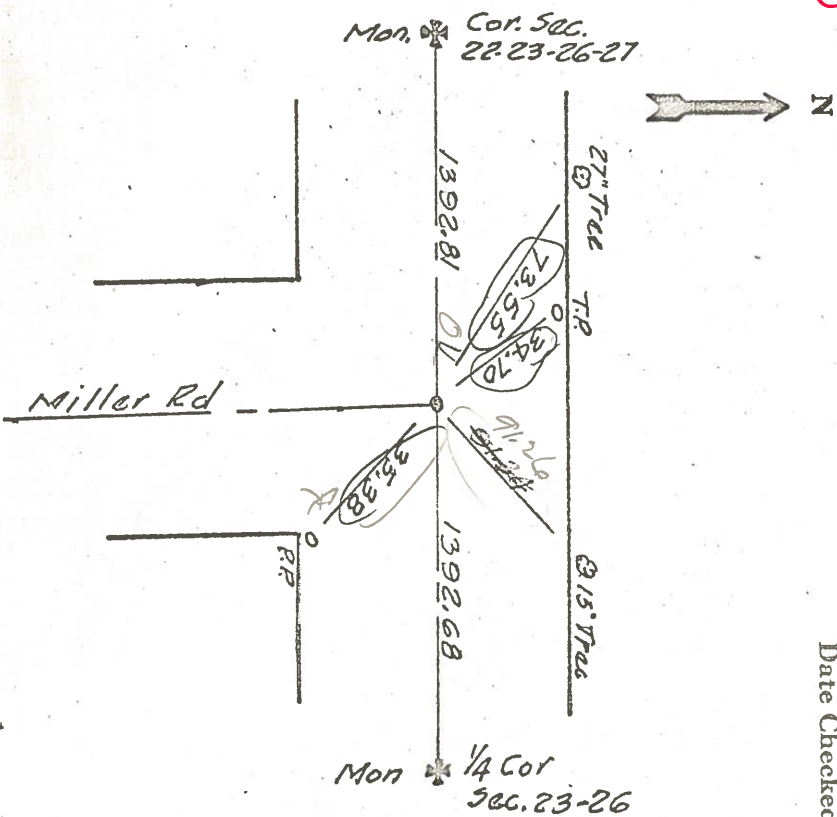
FOUND 4/6/67 BY GUST

S. Road Miller Rd. F. B. P.

E. & W. Road Central Ave F. B. P. P.

(12)

Date Checked:



4012

PERSONNEL TITLE PERSONNEL TITLE COUNTY Lucas DATE 3-10-53
 S. R. U.S. #20 WEATHER 9-22-58
 SEC. TEMP.

DESCRIPTION LEFT CENTER LINE RIGHT JOB NO.

Int. Paab & Central P.K. nail set RR K	#46 ✓	S.W. to witness mon. 56.93' 48.40 S.E. to witness mon. 49.26' 42.43 N.E. to shiner in P.P. 43.13' 43.2
Int. Langenderfer & Central P.K. nail set RR SPK	#47 ✓	S.E. to witness mon. 42.82' 42.78 S.W. to witness mon. 45.49' 45.53 N.E. to witness mon. 39.92 N. to shiner in Guy pole 35.64' 35.6
Int. Murd Rd & Central Ed. shiner set RR S K	#48 ✓	N.E. to shiner in T.P. Guy Pole 55.9 N.W. to witness mon. 52.1 S.S.E. to shiner in P.P. 36.2 N.W. To S.E. Cor. Sign Post 41.2 28.6 32.6
1/4 Cor. Sec. 23 - E5E. Ed. shiner Bolt	#49 ✓	N. to shiner in P.P. 31.15' 30.9 S. to shine in 18" ^{Ash} tree 26.11' 26.3 S.W. to shiner in P.P. 36.38' 36.4 N.W. to " " T.P. 50.20
Int. Wolfinger & Central Set shiner from Co. ref. R.E. Spk. on Surface	#50 ✓	S.W. to witness mon. ^{Guy Pole} 30.09 42.14' 42.1 N.W. to witness mon. ^{Guy Pole} 43.06 37.14' 41.0 S.E. to witness mon. 50.2 S.W. to conc. Sign Post 43.5 S. to N. Side W. Arboretum 45.2 S.E. to stop sign Post. 45.9