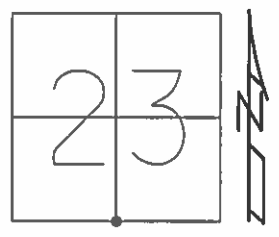


O.D.O.T. DISTRICT 2 SURVEY OFFICE (USE ONLY)

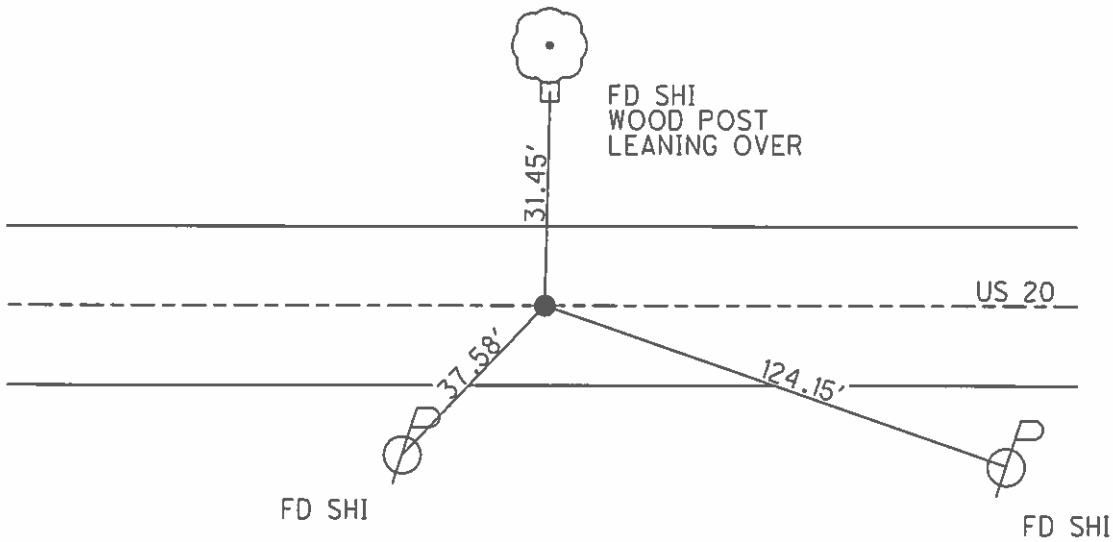
PERSONNEL \_\_\_\_\_ REFERENCE NO. 13 SHEET 15 OF 36  
 NOTES LEU DATE 08/25/16 ROUTE US 20  
 H.C. HOMAN WEATHER CLOUDY COUNTY LUCAS  
 R.C. LEU TEMP. 73° TOWNSHIP RICHFIELD  
 SECTION 23  
 T 9 S R 5 E

TYPE MONUMENT FD PK/W  
 ON SURFACE - ~~BELOW~~ ON  
~~LEFT - C PAVT~~ - RIGHT 0.7'  
11.9 TO RT EDGE PAVEMENT  
 S.L.M. 243+17  
 Grid: Northing: 733696.937 Easting: 1616094.510



FD SQUARE BOLT 2" DEEP  
 1984  
 SET PK/WASHER  
 12/19/97, BWC  
 NEWREF13  
 FD BRASS DISK WITH  
 DIMBLE ON EX. CONC. PAVT

SET SHI  
 24"



# O.D.O.T. DISTRICT 2 SURVEY OFFICE

PERSONNEL

REFERENCE NO. 13

SHEET 14 OF 22

NOTES CORDES

H.C. VAN DUSEN

DATE 10-15-97

ROUTE US #20

R.C. Huss

WEATHER SUNNY

COUNTY LUCAS

TEMP. +83 °F

TOWNSHIP Richfield

SECTION 23

Set P.K./WASHER  
12-19-97  
BWC

T 9 S R 5 E

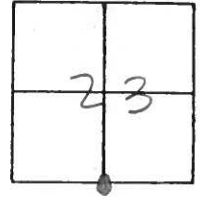
TYPE MONUMENT Sm RR. Spike

ON SURFACE - ~~BELOW~~ yes

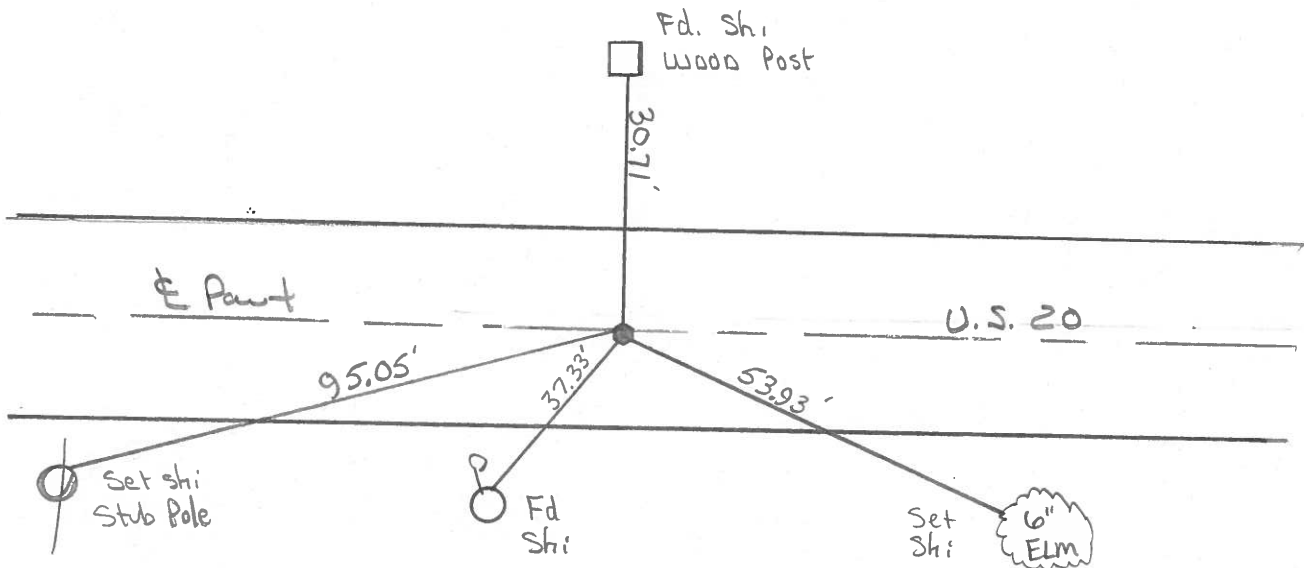
LEFT - ¢ PAW'T. - RIGHT 0.7' Rt

11.9 TO RT EDGE PAVEMENT

S.L.M. 243+17



Fd square built 2" deep - 1984



County Lucas ~~SR~~ US#20

Date 28 June 84

Township Richfield

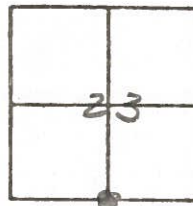
Weather Fair

Section 23

Temp. 75°

T N, R E

Personnel I. Stone



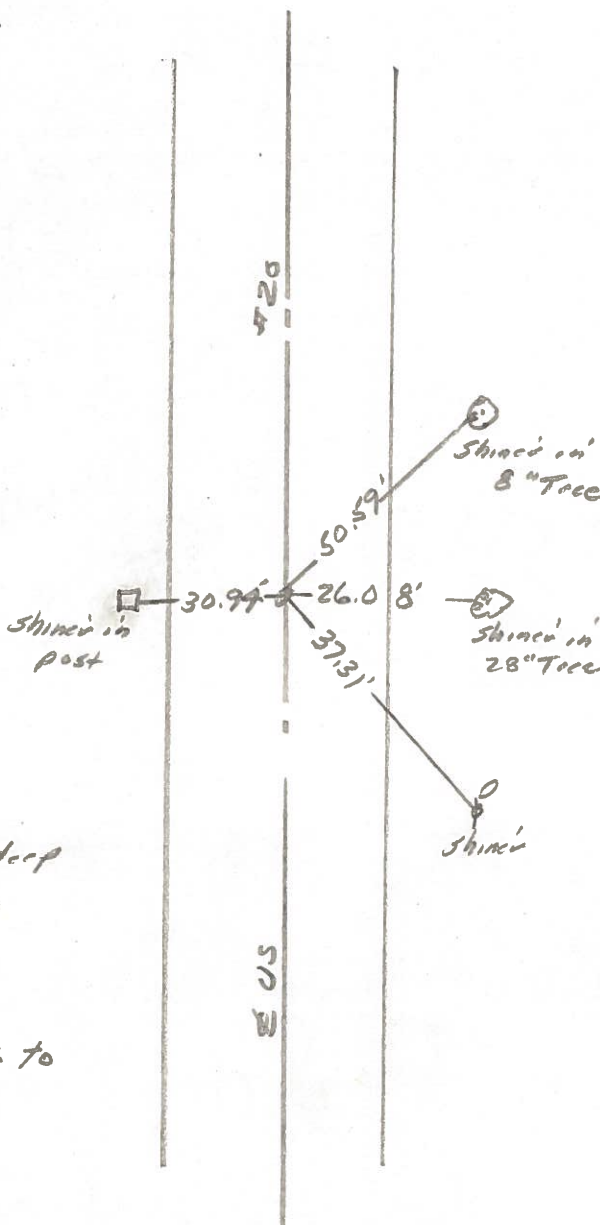
P. Neuser

R. Michalek

D. Curtis

SLM STA. 293463

REF. NO. 13



Fd. square bolt 2" deep  
11.3' to S. edge post,  
13.0' to N. edge post

Reset Small R.R. Spk. to  
Surface - 9-6-84

PERSONNEL TITLE PERSONNEL TITLE

COUNTY LUCAS

DATE 30 JULY 71

W. DENNO

D. STEVENS

R. BRANNAN

S. R. U.S. 20

WEATHER CLOUDY

SEC.

TEMP. 60±

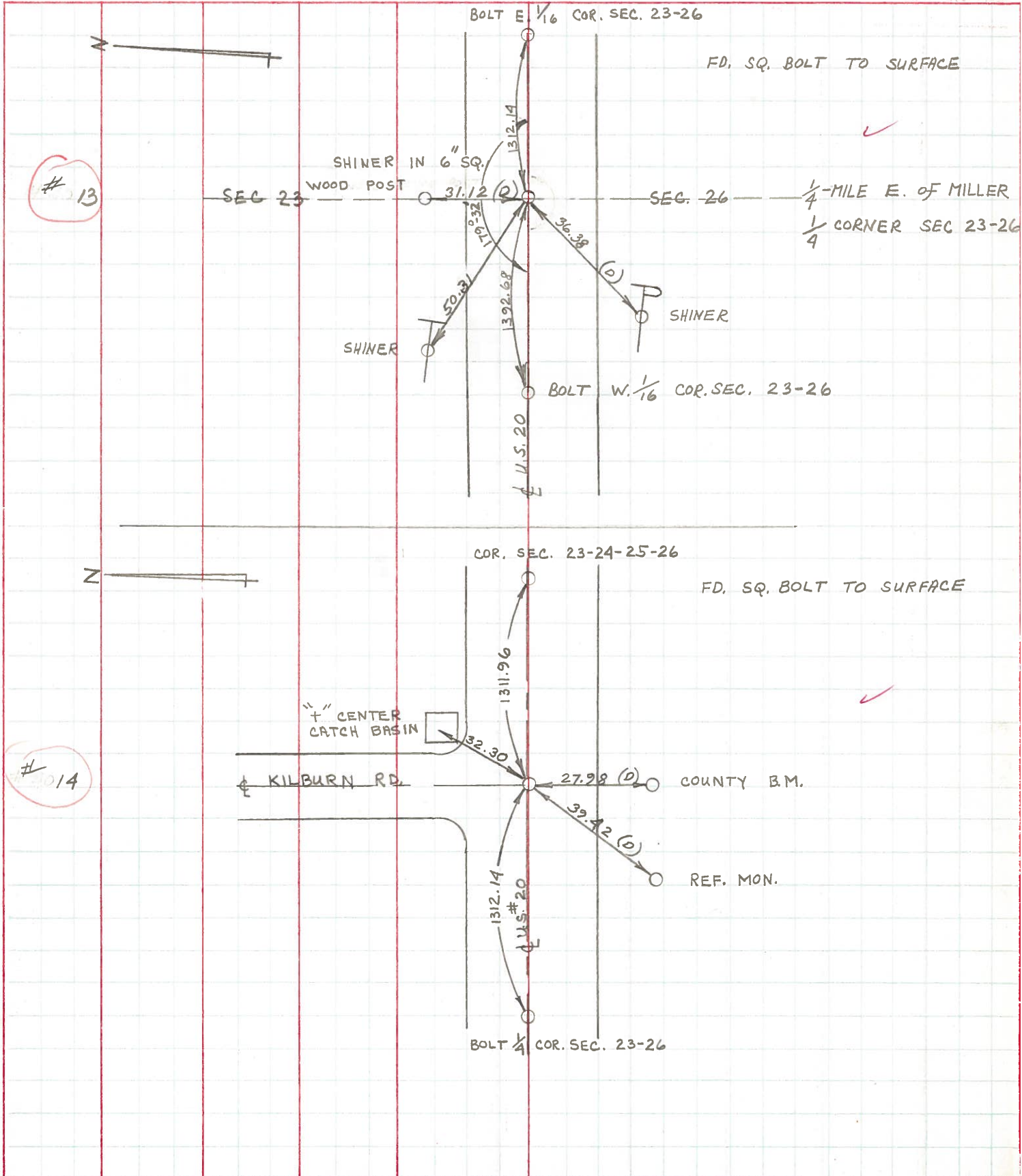
DESCRIPTION REFERENCES TO CONTROL POINTS

LEFT

CENTER LINE

RIGHT

JOB NO.



PERSONNEL TITLE PERSONNEL TITLE

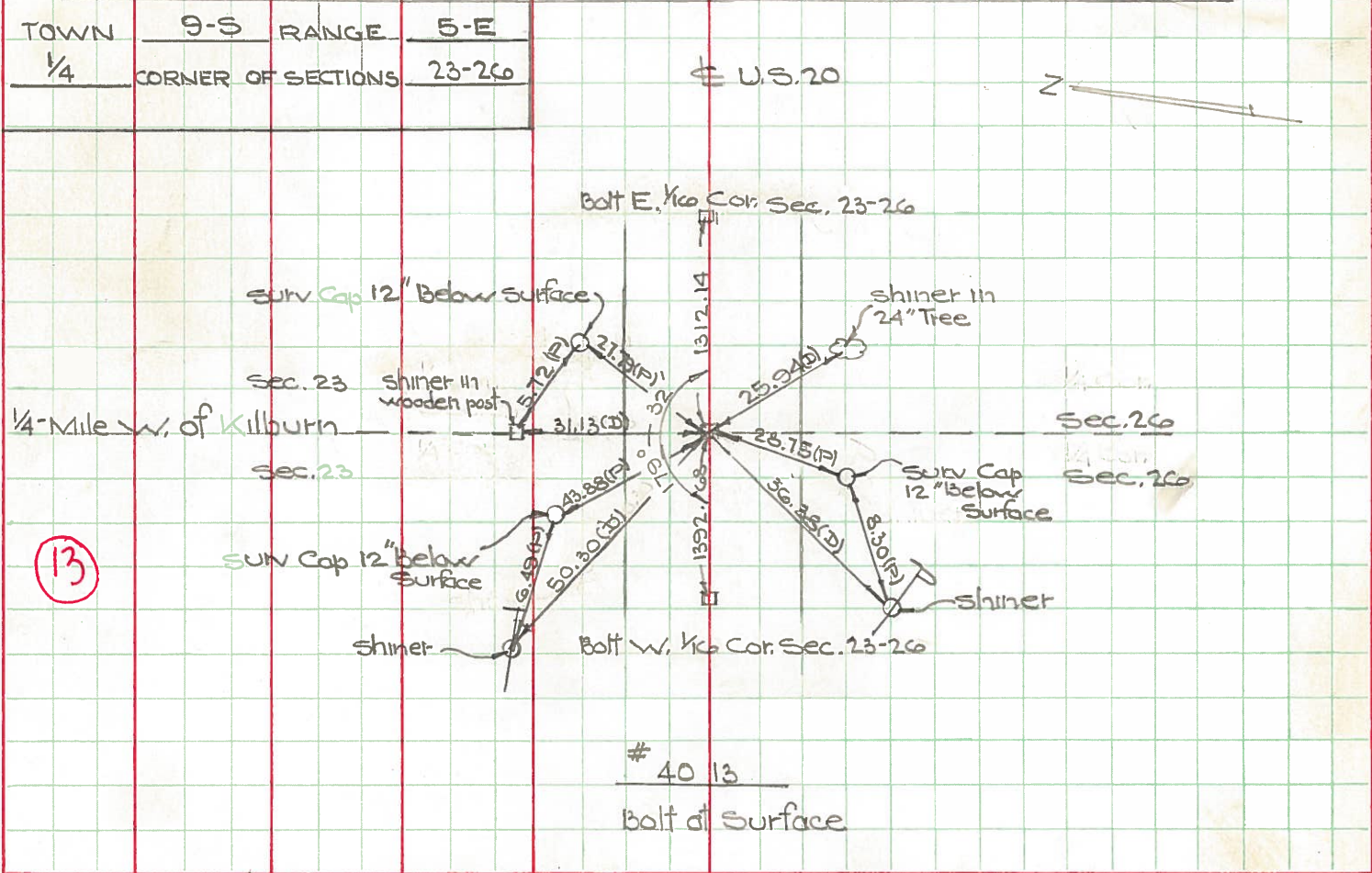
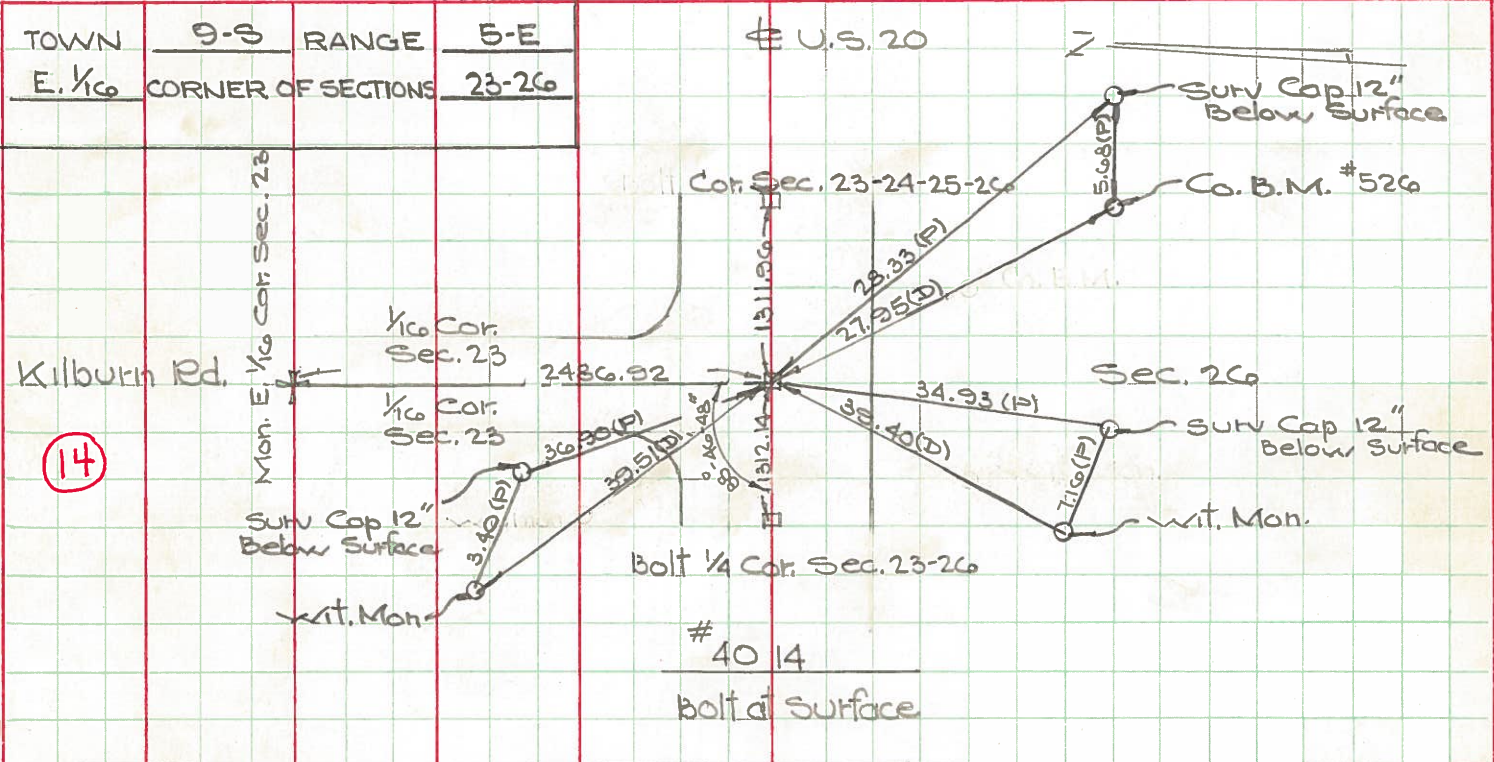
COUNTY Lucas DATE May 16, 1968

w/ Denno  
D. Curtis  
J. Teal  
J. Brindley

S. R. 20 WEATHER mild

SEC. TEMP. 65°±

DESCRIPTION U.S. 20 (Central Ave) - Ref. Mon. & Control Points LEFT CENTER LINE RIGHT JOB NO. 02994(0)



Town 95 Range 5E  
 1/4 Corner of Sections 23-26

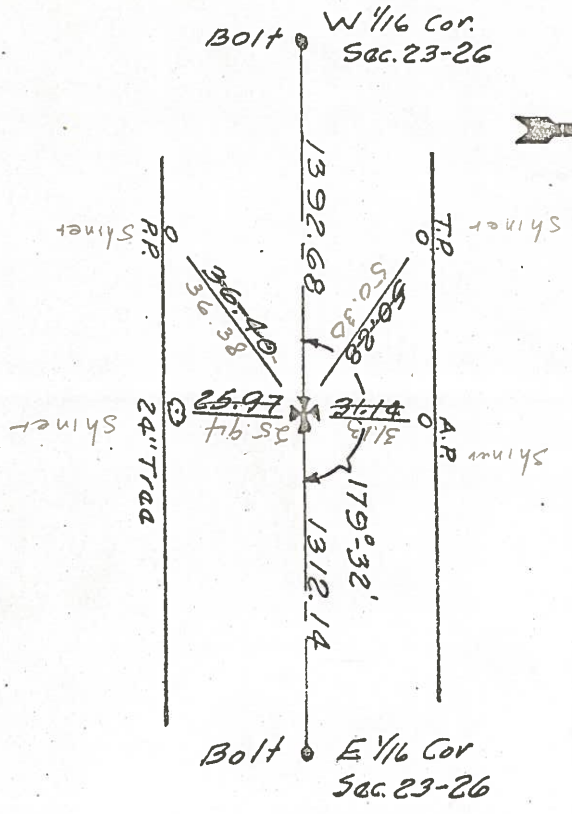
Kind of Monument Mon. Remarks Bolt at surface OK

FOUND 4/3/67 BY GUST

N. & S. Road 1/4 Mile W. of Kilburn F. B. P.  
 E. & W. Road Central Ave. F. B. P.

(13)

Date Checked:  
 1860 White Sat Stone  
 1907 Shoemaker Rd. Stone  
 1932 Wilson Fd. Mon.



4013

Town 95 Range 5E  
 E 1/16 Corner of Sections 23-26

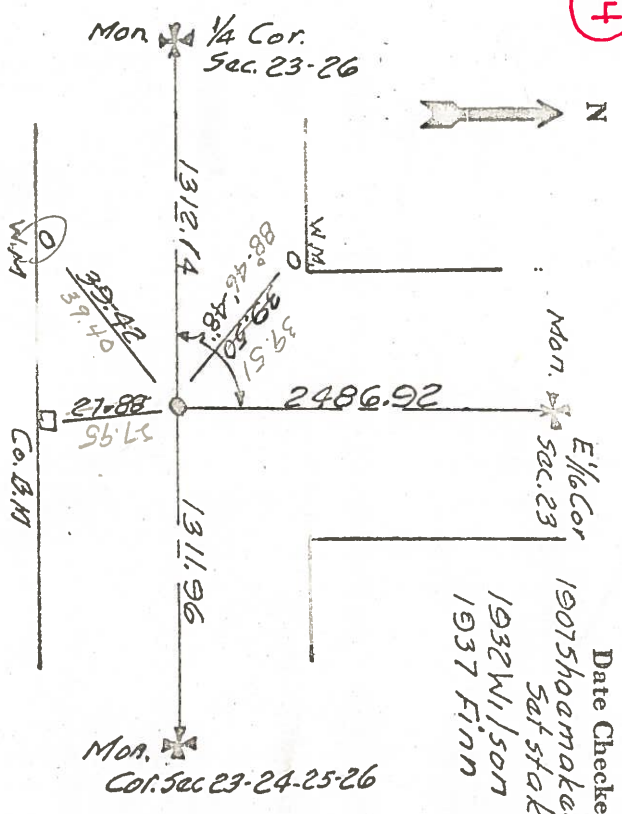
Kind of Monument Bolt Remarks OK

FOUND 4/1/67 BY GUST

N. & S. Road Kilburn Rd F. B. P.  
 E. & W. Road Central Ave. F. B. P.

(14)

Date Checked:  
 1907 Shoemaker  
 Sat stake  
 1932 Wilson  
 1937 Finn



4014

PERSONNEL TITLE PERSONNEL TITLE

COUNTY Lucas DATE 3-10-53  
9-22-58

S. R. U.S. #20 WEATHER

SEC. TEMP.

DESCRIPTION LEFT CENTER LINE RIGHT JOB NO.

Int. Paab & Central  
P.K. nail set R.P. K  
⑧ #46 ✓  
S.W. to witness man. 56.93' 48.44'  
S.E. to witness man. 49.26' 42.43'  
N.E. to shiner in P.P. 43.13' 43.2

Int. Langenderfer & Central  
P.K. nail set R.R. SPK  
⑨ #47 ✓  
S.E. to witness man. 42.82' 42.72'  
S.W. to witness man. 45.49' 45.53'  
N.E. to witness man. 39.92'  
N. to shiner in Guy pole 35.64' 35.6

Int. Murd Rd & Central  
Fd. shiner set R.P.S. K  
⑪ #48 ✓  
N.E. to shiner in T.P. Guy Pole 55.9  
52.1  
36.2  
N.W. to witness man. 41.2  
S.S.E. to shiner in P.P. 28.6  
N.W. To S.E. Cor. Sign Post 32.6

1/4 Cor. SEC. 23 - E5E.  
Fd. shiner Bolt  
⑬ #49 ✓  
N. to shiner in P.P. 31.15' 30.9  
S. to shine in 18" Ash 26.11' 26.3  
S.W. to shiner in P.P. 36.38' 36.4  
N.W. to " " T.P. 50.20

Int. Wolfinger & Central  
Set shiner from Co. ref.  
R.P. SPK. on Surface  
⑮ #50 ✓  
S.W. to witness man. Guy Pole 30.09 42.14' 42.1  
N.W. to witness man. Guy Pole 43.06 37.44' 41.0  
S.E. to witness man. 50.2  
S.W. to Conc. Sign Post. 43.5  
S. to N. Side W. Arboretum 45.2  
S.E. to stop sign Post. 45.9