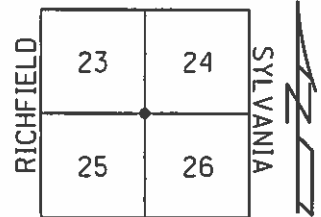


O.D.O.T. DISTRICT 2 SURVEY OFFICE (USE ONLY)

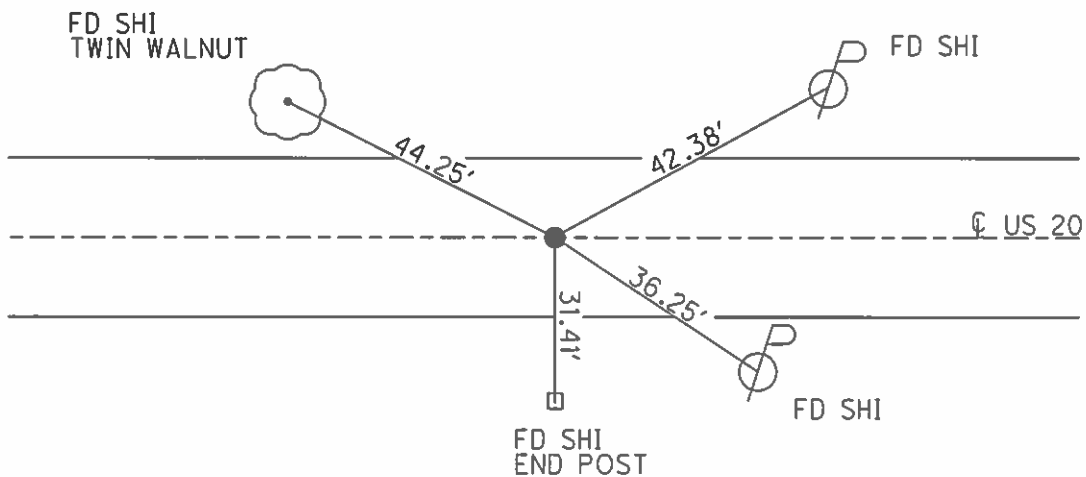
PERSONNEL \_\_\_\_\_ REFERENCE NO. 15 SHEET 17 OF 36  
 NOTES LEU DATE 08/25/16 ROUTE US 20  
 H.C. HOMAN WEATHER PARTLY CLOUDY COUNTY LUCAS  
 R.C. LEU TEMP. 73° TOWNSHIP RICHFIELD  
 SECTION 23  
 T 9 S R 5 E

TYPE MONUMENT \_\_\_\_\_ FD PK/W \_\_\_\_\_  
~~ON SURFACE~~ - BELOW \_\_\_\_\_ ON \_\_\_\_\_  
 LEFT - ~~C PAVT~~ - RIGHT \_\_\_\_\_ 0.5' \_\_\_\_\_  
13.0 TO LT EDGE PAVEMENT  
 S.L.M. \_\_\_\_\_ 269+47 \_\_\_\_\_



Grid: Northing: 733700.511 Easting: 1618718.683

FD 1 1/4" SQUARE BOLT 2" DEEP  
 1984  
 SET PK/WASHER  
 12/19/97, BWC  
 NEWREF15  
 BRASS DISK WITH  
 DIMPLE ON EX  
 CONC PAVT



# O.D.O.T. DISTRICT 2 SURVEY OFFICE

PERSONNEL

REFERENCE NO. 15

SHEET 16 OF 22

NOTES CORDES

H.C. VAN DUSEN

DATE 6-25-97

ROUTE US #20

R.C. HUSS

WEATHER SUNNY

COUNTY LUCAS

TEMP. +85

TOWNSHIP RICHFIELD

SECTION 23

T9 S R 5 E

Set P.K. / WASHER  
12-19-97  
BWC.

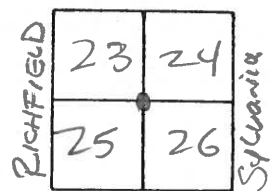
TYPE MONUMENT sq Bolt

ON SURFACE - BELOW 2" Deep

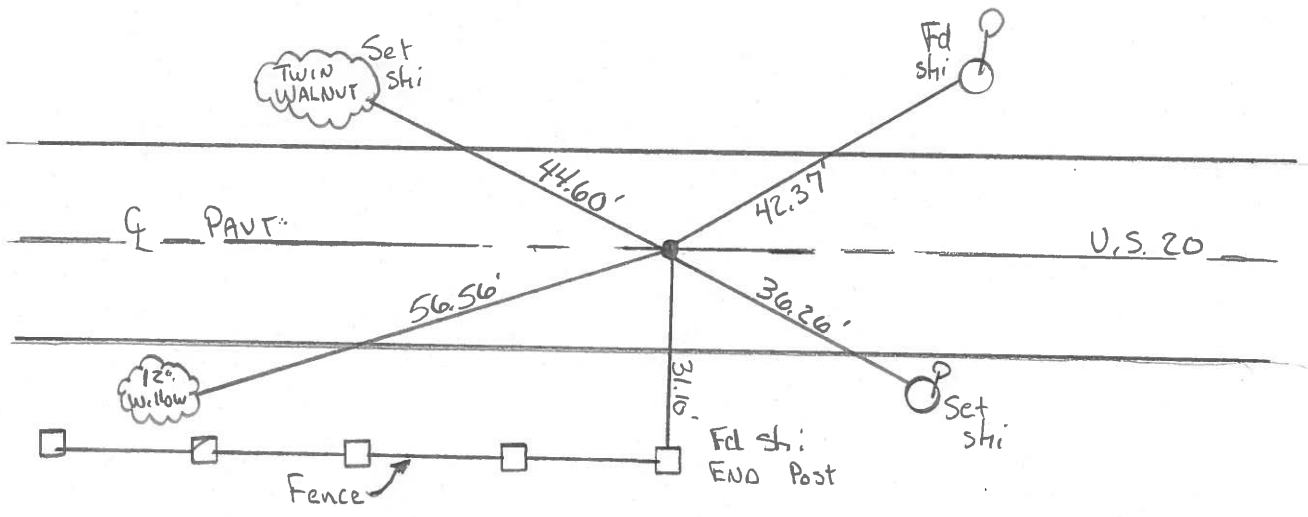
LEFT - 0 PAV'T. - RIGHT 0.5'

13.0 TO Lt EDGE PAVEMENT

S.L.M. 269+47



Fd 1 1/2" square BOLT 2" deep - 1984



Q.D.O.T. DISTRICT 2 SURVEY OFFICE

SHEET 16 OF

County LUCAS SR. US #20

Date 29 June 84

Township Richfield

Weather Fair

Section 23-24-25-26

Temp. 70°

T N, R E

Personnel V. Stone

P. Neuse

R. Michalak

D. Curtis

23	24
26	25



SLM STA. 269+88

**269+47**

REF. NO. 15



Set P.K. / WASHER  
12-19-97

SUN  
+84 5/8  
6-25-97

5 LT &  
13.0 LT EDGE

BC  
HC BVD  
RC SH  
F CC

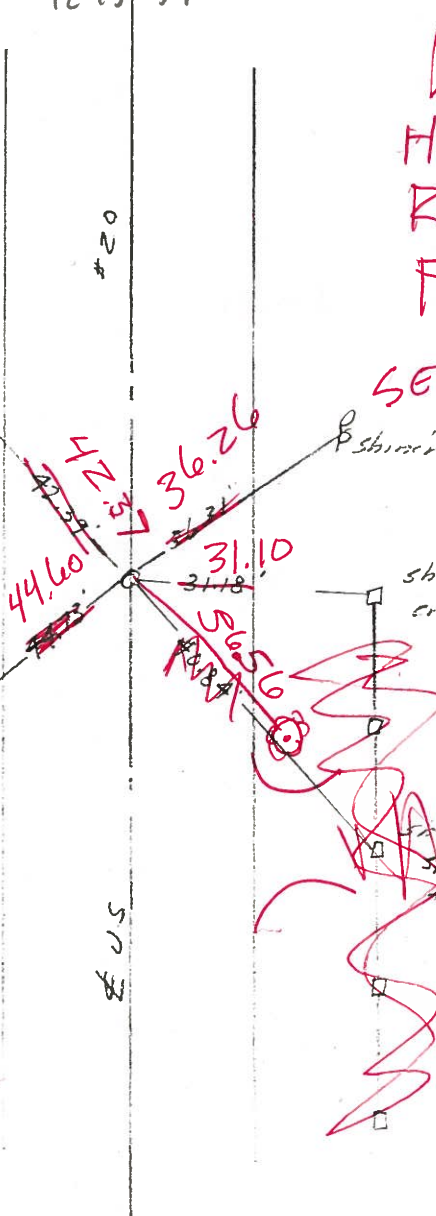
FD  
shinac  
49.60  
Set  
shinac in  
6" hole  
TWIN  
WALNUT

SET

shinac in  
end post  
FD  
SET SHI  
12" willow

✓ Ed. 1 1/4" sassa bolt 2' deep  
11.6' to N. edge put.  
12.7' to S. edge put.

Reset Small R.P. Spk. to  
Surface - 9-6-84



County Lucas S.R. US # 20

Date 29 June 84

Township Richfield

Weather Fair

Section 23-24-25-26

Temp. 70°

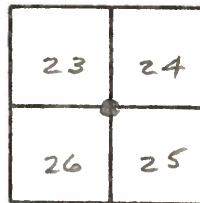
T N, R E

Personnel 1. Stone

P. Neusev

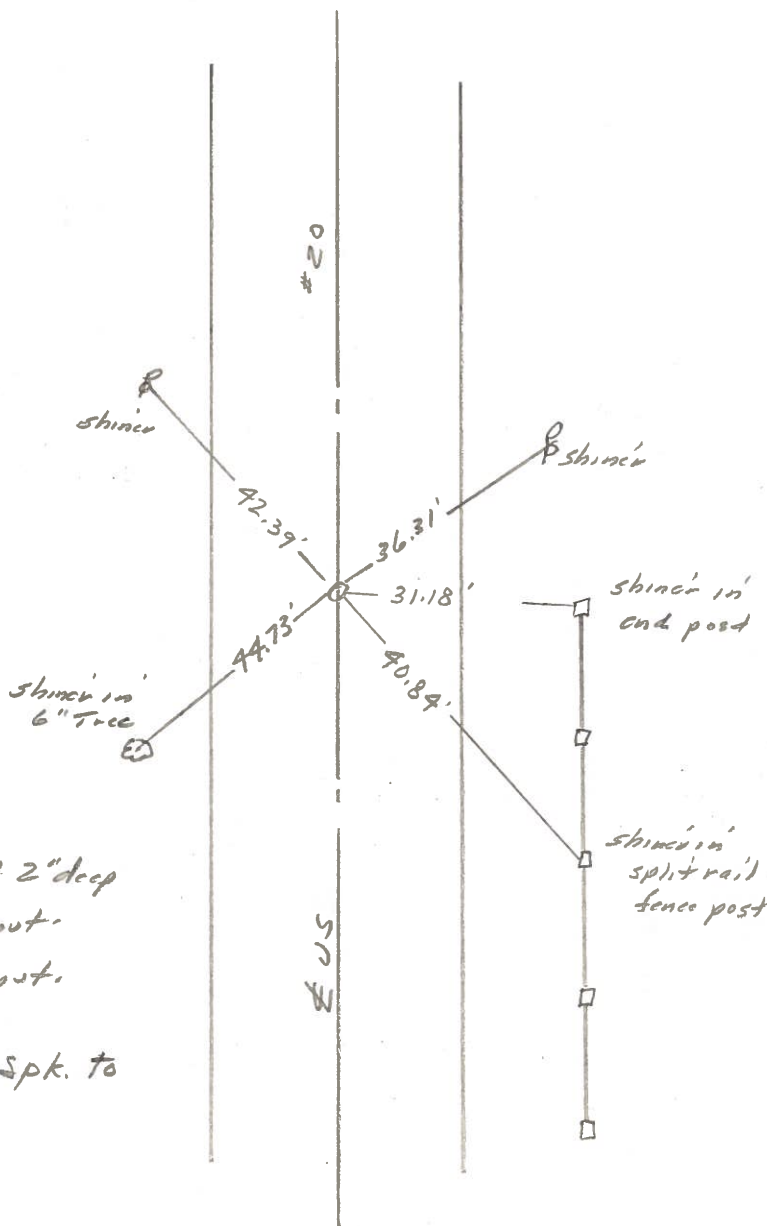
R. Michalata

D. Curtis



SLM STA. 269+88

REF. NO. 15

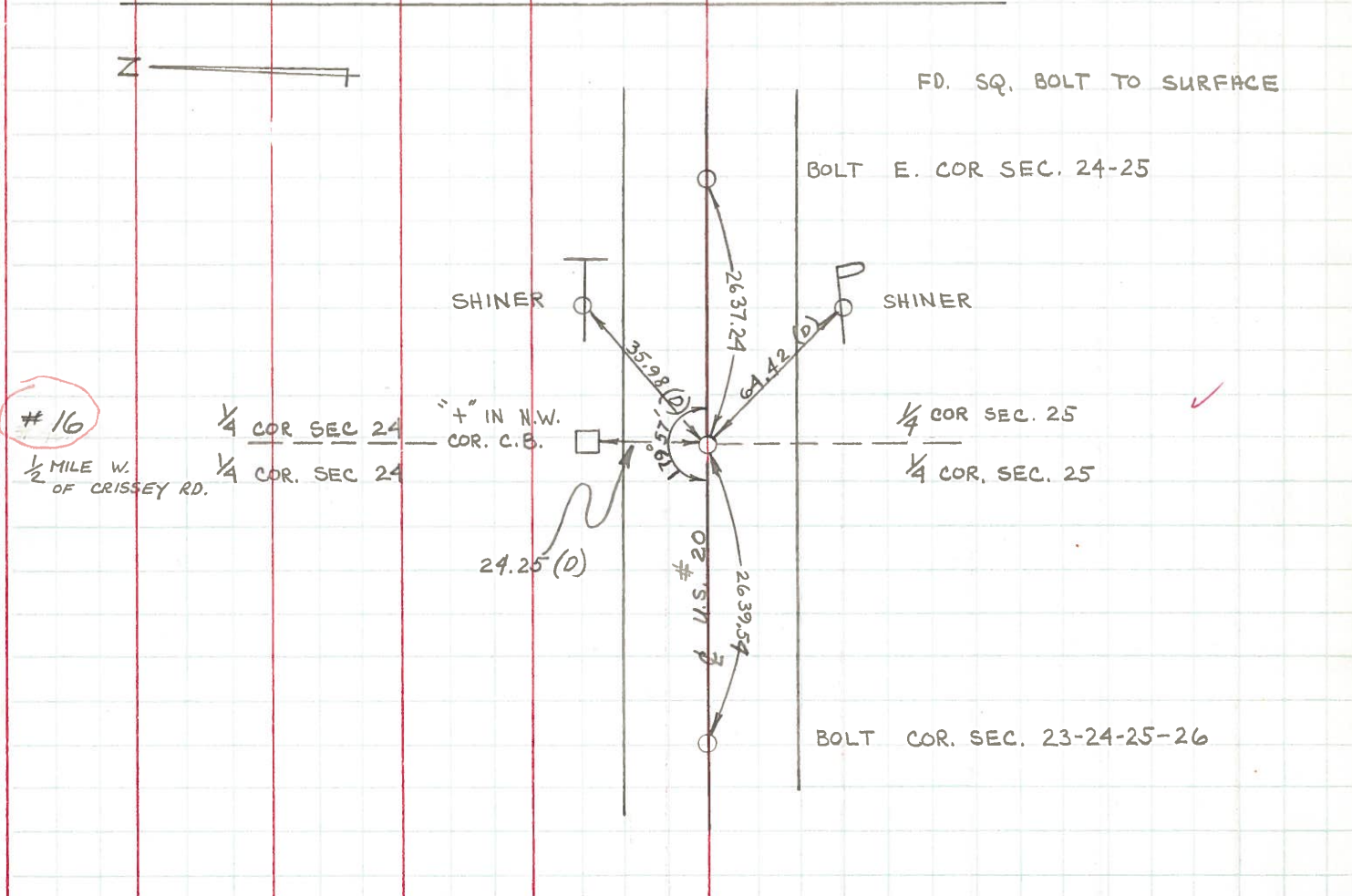
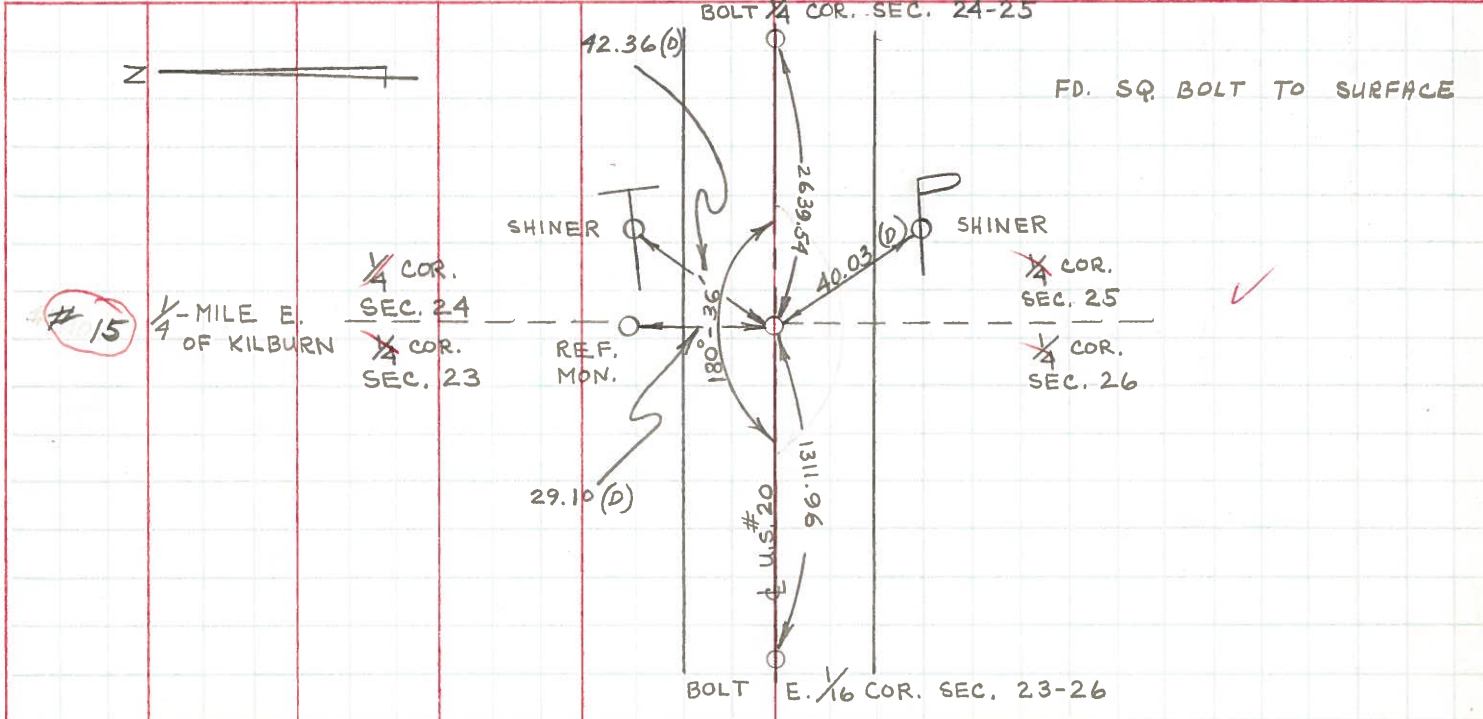


Ed. 1 1/4" square bolt 2" deep  
 11.6' to N. edge put.  
 12.7' to S. edge put.

Reset Small R.R. Spk. to  
 Surface - 9-6-84

PERSONNEL	TITLE	PERSONNEL	TITLE	COUNTY	DATE	WEATHER	TEMP.
D. CURTIS				LUCAS	2 AUG 71	FAIR	75 ±
D. STEVENS				S. R. US. # 20			
R. BRANNAN							

DESCRIPTION REFERENCES TO CONTROL POINTS LEFT CENTER LINE RIGHT JOB NO.







Town 95 Range 5E

Sec. Corner of Sections 23-24-25-26

Kind of Monument Mon. Remarks

Bolt at surface. OK

FOUND 4/3/67 BY GUST.

N. & S. Road 1/4 Mile E. of Kilburn Rd F. B. 546 P. 29

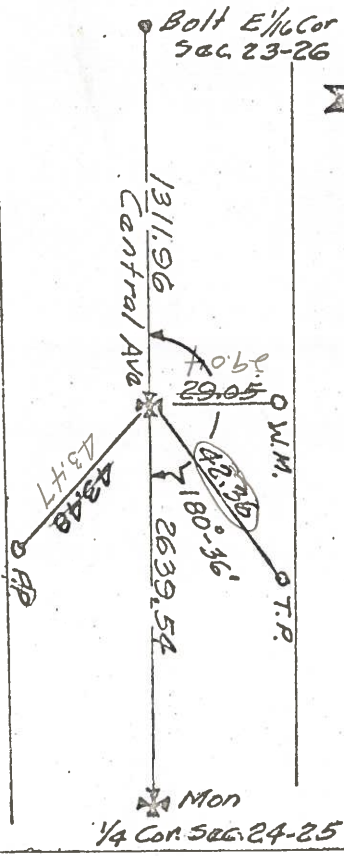
E. & W. Road Central Ave F. B. P.

15

N



Date Checked:  
1860 White S&S stone  
1905 Shoemaker F&B



4015

Town 95 Range 5E

1/4 Corner of Sections 24-25

Kind of Monument Mon Remarks

Bolt at surface. OK

FOUND 4/1/67 BY GUST.

N. & S. Road 1/2 Mile W. of Crissey Rd F. B. 546 P. 29

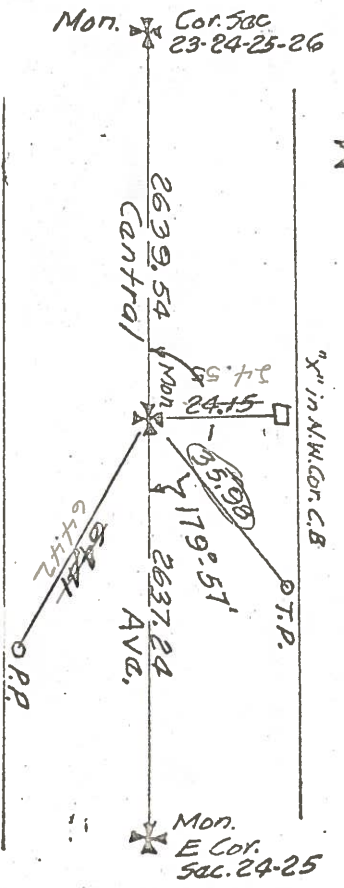
E. & W. Road Central Ave. F. B. P.

16

N



Date Checked:  
1861 White  
F&B W. S&S stake  
1927 Wilson



4016



PERSONNEL TITLE PERSONNEL TITLE

COUNTY Lucas DATE 3-9-53

S. R. U.S. #20 WEATHER \_\_\_\_\_

SEC. \_\_\_\_\_ TEMP. \_\_\_\_\_

DESCRIPTION LEFT CENTER LINE RIGHT JOB NO.

DESCRIPTION	LEFT	CENTER LINE	RIGHT	JOB NO.
Int. Kilburn & Central Set Conc. nail Set Small R.E. Spk.			N.W. to witness mon. S.W. to witness mon. S. to E. of brass plate in Co. B.M.	39.44 40.44 39.4 27.8
<b>(14)</b>	<b>#51</b>			
S.E. Cor. sec. 23-R5E Nail on Surface Boat Spk.			N.N.E. to shiner in 24" maple N.E. to shiner in 24" maple S.E. to shiner in P.P. S.W. to witness mon.	33.08 52.40 43.31 38.83
<b>(15)</b>	<b>#52</b>			
S. 1/4 Cor. 500, 24 R5E. Shiner			N to X on NW. Cor. C. Basin S.W. to witness mon. S.E. to witness mon. N. to witness mon. S. to iron pipe in man. N.E. to shiner in T.P. S.E. " " " P.P. S. to outside Cor. S.W. Cor. C.B.	24.20 39.01 38.9 28.14 29.9 35.96 64.40 25.0
<b>(16)</b>	<b>#53</b>			
269 1/2 W. of Cressey Rd. P.I. found shiner Set Boat Spk (Not Found) 9/29/58			S.W. to shiner in P.P. N.W. to shiner in T.P. S.E. to shi. in N. leg of sign board N.E. " " " T.P. E.S.E. " " " P.P.	63.06 86.85 69.58 64.4 94.50
<b>#54</b>				
Int. Cressey Rd. & Central Set Boat Spk (Not Found) 9/29/58		S.H. 843	S.W. to witness mon. N.N.W. to shiner in 18" catalpa N.W. to shiner in 18" catalpa S.E. to witness mon. S.W. to Shiner P.P. S.E. to Near side Conc. Sign Post	30.33 48.79 60.75 41.18 31.12 32.12
<b>#55</b>				