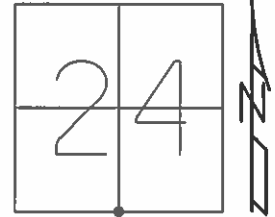


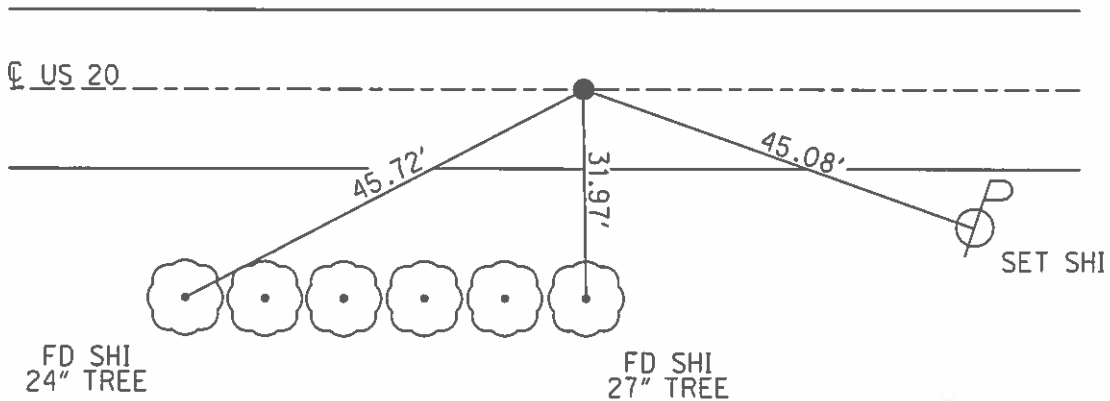
O.D.O.T. DISTRICT 2 SURVEY OFFICE (USE ONLY)

PERSONNEL _____ REFERENCE NO. 16 SHEET 18 OF 36
 NOTES LEU DATE 08/25/16 ROUTE US 20
 H.C. HOMAN WEATHER PARTLY CLOUDY COUNTY LUCAS
 R.C. LEU TEMP. 73° TOWNSHIP SYLVANIA
 _____ SECTION 24
 _____ T 9 S R 6 E

TYPE MONUMENT _____ FD PK/W _____
 ON SURFACE - ~~BELOW~~ _____ ON _____
~~LEFT~~ - ~~C~~ PAV'T - RIGHT _____ 0.4' _____
12.2' TO RT EDGE PAVEMENT
 S.L.M. _____ 295+91 _____
 Grid: Northing: 733677.172 Easting: 1621358.002



FD SQUARE BOLT 2" DEEP
 1984
 SET PK/WASHER
 12/19/97
 NEWREF16
 BRASS DISK WITH
 DIMPLE ON EX
 CONC PAVT



O.D.O.T. DISTRICT 2 SURVEY OFFICE

PERSONNEL

REFERENCE NO. 16

SHEET 17 OF 22

NOTES CORDES

H.C. VAN DUSEN

R.C. HUSS

DATE 6-25-97

WEATHER SUNNY

TEMP. +85°F

Set P.K. WASHER
12-19-97

ROUTE US #20

COUNTY LUCAS

TOWNSHIP Sylvania

SECTION 24

T 9 S R 6 E

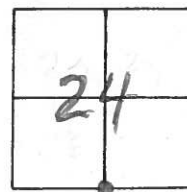
TYPE MONUMENT Sm R.P. Spike

ON SURFACE - ~~BELOW~~ Yes

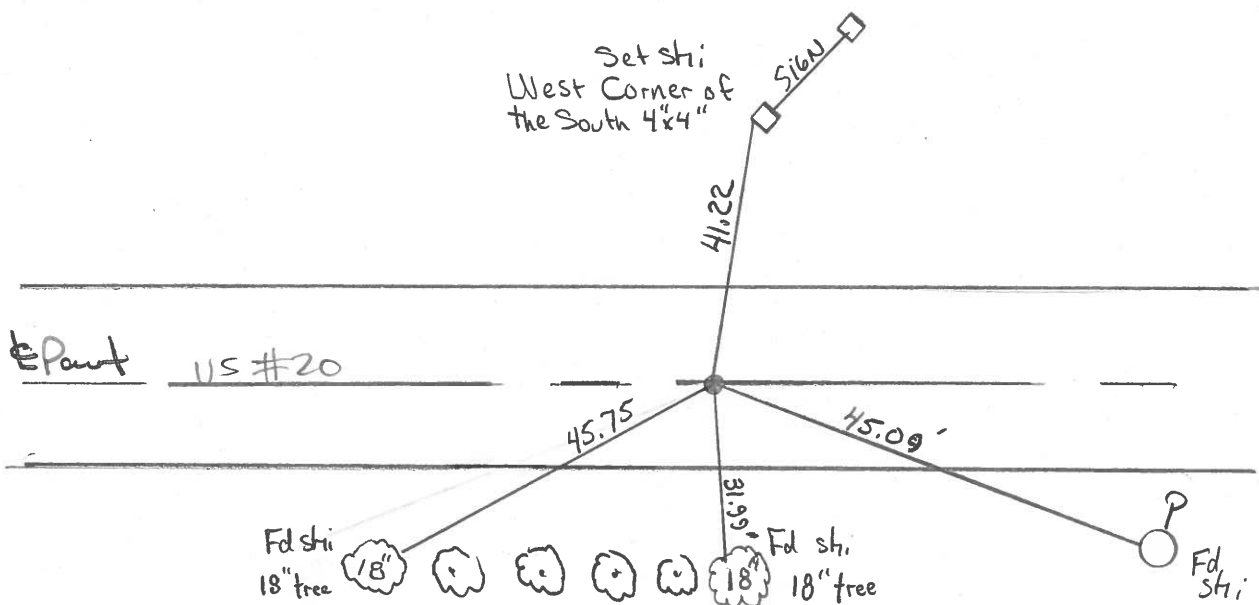
~~LEFT~~ - PAV'T. - RIGHT 0.4' Rt

12.2' TO Rt EDGE PAVEMENT

S.L.M. 295+91



Fd. Square bolt 2" deep - 1984



County Lucas S.R. US#20

Date 29 June 84

Township Sylvania

Weather Fair

Section 24-25

Temp. 71°

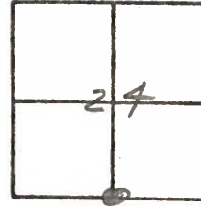
T N, R E

Personnel I. Stone

P. Newser

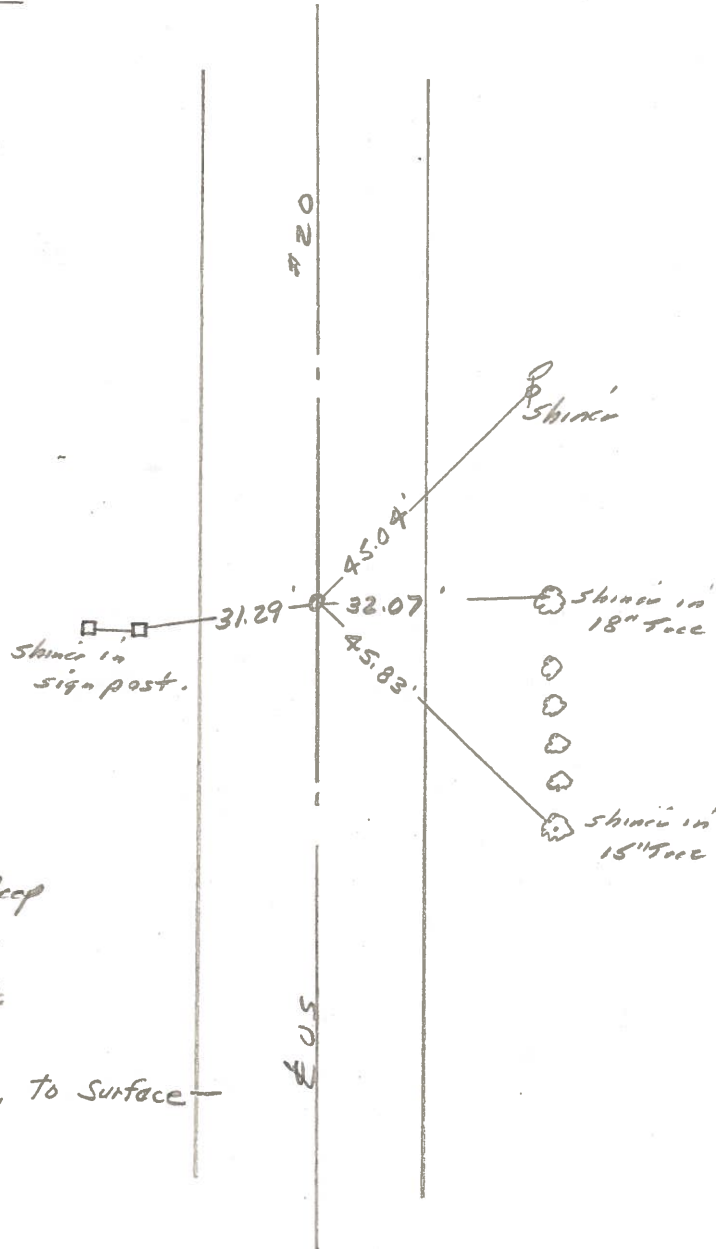
R. Michalak

J. Curtis



SLM STA. 296+28

REF. NO. 16



Fd. square bolt 2" deep
12.2' to N. edge put
12.0' to S. edge put.

Reset Small R.R. Spk. to Surface
9-6-84

PERSONNEL TITLE PERSONNEL TITLE

COUNTY LUCAS DATE 2 AUG 71

D. CURTIS

D. STEVENS

R. BRANNAN

S. R. US. # 20

WEATHER FAIR

SEC.

TEMP. 75 ±

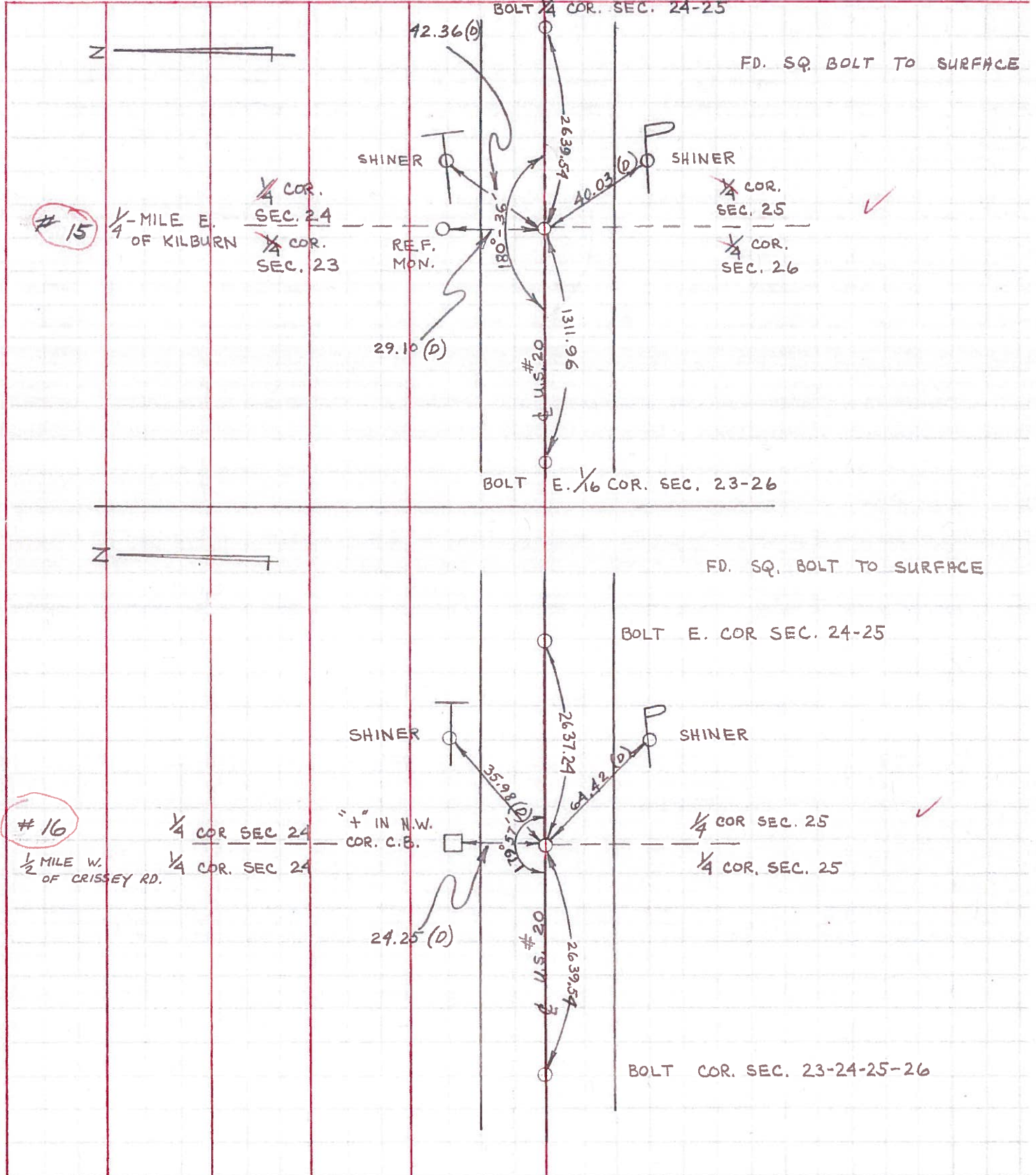
DESCRIPTION REFERENCES TO CONTROL POINTS

JOB NO.

LEFT

CENTER LINE

RIGHT



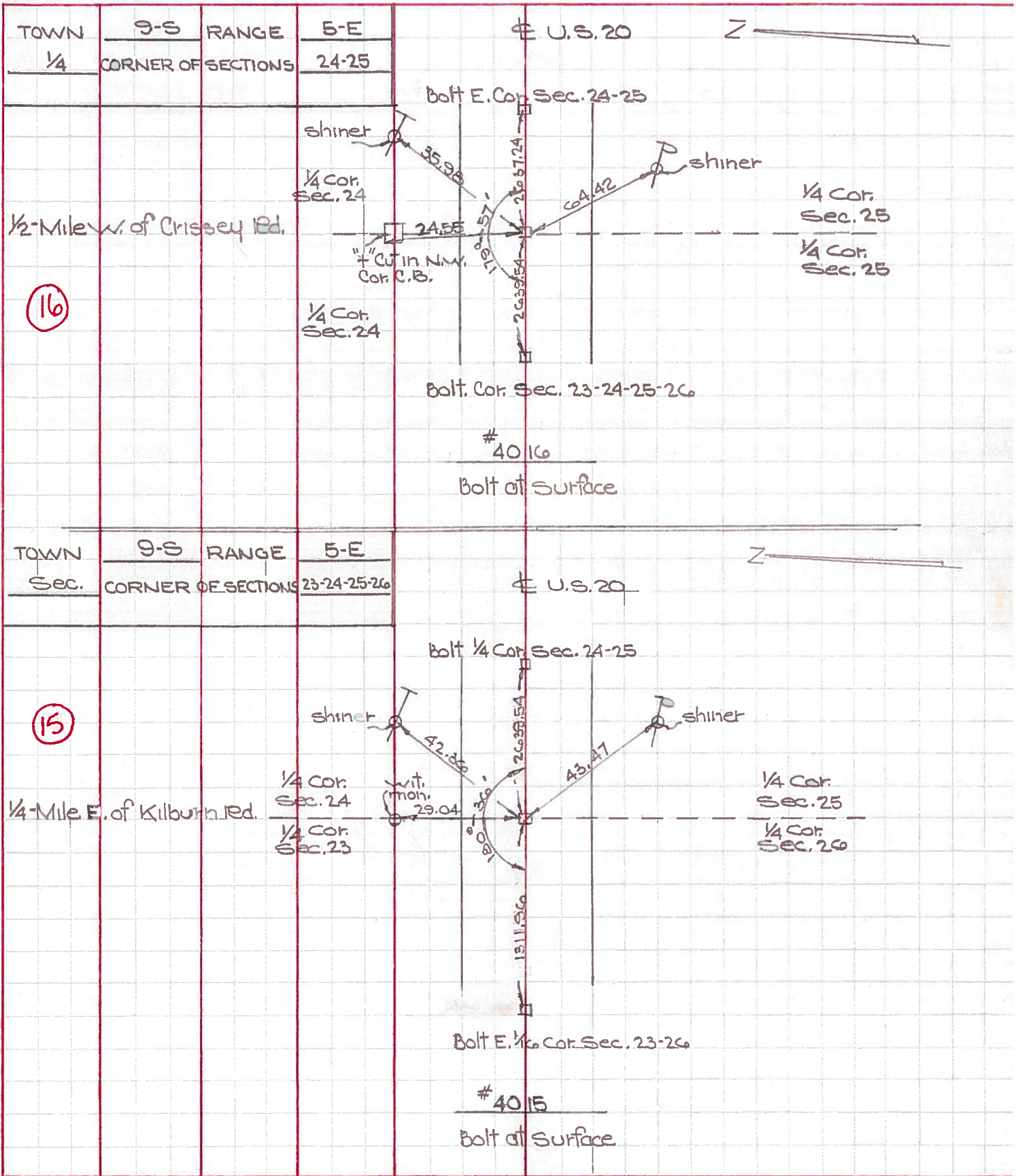
PERSONNEL TITLE PERSONNEL TITLE

COUNTY Lucas DATE May 16, 1968

S. R. 20 WEATHER mild

SEC. TEMP. 60°±

DESCRIPTION U.S. 20 (Central Ave) - Ref. Mon. & Control Points JOB NO. 02994(0)



Town 95 Range 5E

Sec. Corner of Sections 23-24-25-26

Kind of Monument Mon. Remarks

Bolt at surface. OK

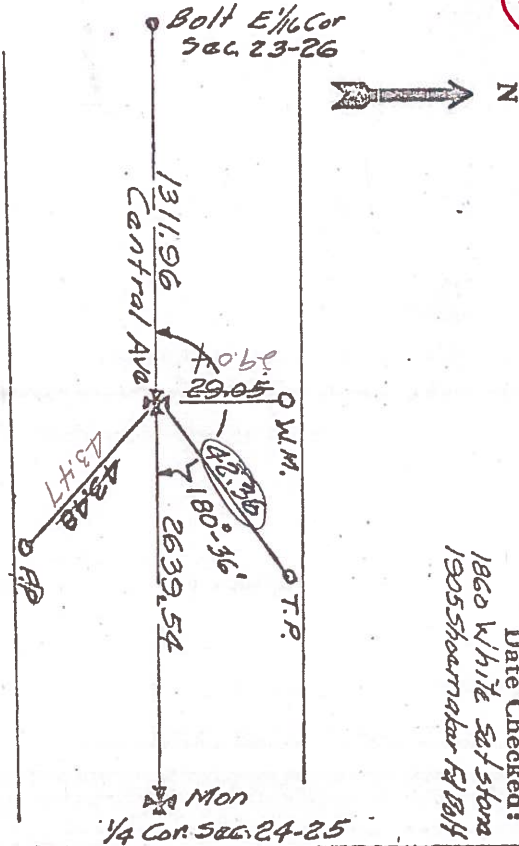
FOUND 4/3/67 BY GUST

N. & S. Road 1/4 Mile E. of Kilburn Rd. F. B. 546 P. 29

E. & W. Road Central Ave. F. B. P.

(15)

Date Checked:
1860 White Settlement
1905 Shoemaker & Bluff



4015

Town 95 Range 5E

1/4 Corner of Sections 24-25

Kind of Monument Mon Remarks

Bolt at surface. OK

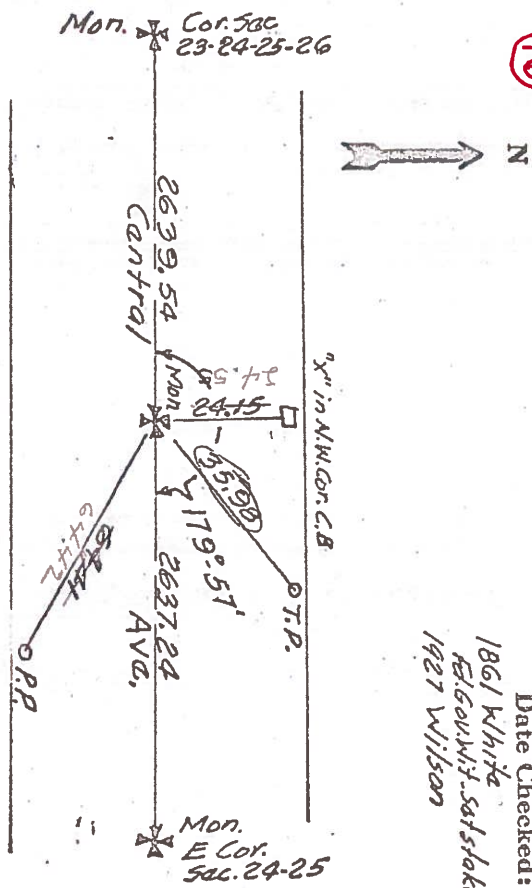
FOUND 1/6/67 BY GUST

N. & S. Road 1/4 Mile W. of Crissey Rd. F. B. 546 P. 29

E. & W. Road Central Ave. F. B. P.

(16)

Date Checked:
1861 White Settlement
1927 Wilson



4016

PERSONNEL TITLE PERSONNEL TITLE

COUNTY Lucas DATE 3-9-53

S. R. U.S. #20 WEATHER

SEC. TEMP.

DESCRIPTION LEFT CENTER LINE RIGHT JOB NO.

Int. Kilburn & Central
Set conc. nail
Set Small P.E. Spk.
#51 ✓

N.W. to witness man. 39.4
S.W. to witness man. 39.4
S. to E. of brass plate in Co. B.M. 27.8

14

S.E. cor. sec. 23 - R5E
Nail on Surface Boat Spk.
#52 ✓

N.N.E. to shiner in 24" maple 33.08 33.1
N.E. to shiner in 24" maple 52.40 52.4
S.E. to shiner in P.P. 43.31 43.3
S.W. to witness man. 38.83 38.9

15

S. 1/4 cor. sec. 24 R5E.
Shiner
#53 ✓

N to X on NW. cor. C Basin 24.20
S.W. to witness man. 39.01 39.0
S.E. to witness man. 38.9
N. to witness man. 28.14 28.3
S. to iron pipe in man. 29.9
N.E. to shiner in T.P. 35.96 36.0
S.E. " " " P.P. 64.40
S. to outside cor. S.W. cor. C.B. 25.0

16

2695 W. of Cressy Rd.
P.I. found shiner Set Boat Spk
(Not Found) 9/29/58
#54 ✓

S.W. to shiner in P.P. 63.06
N.W. to shiner in T.P. 86.88
S.E. to shi. in N. leg of sign board 69.58
N.E. " " " T.P. 64.4
E.S.E. " " " P.P. 96.50

Int. Cressy Rd. & Central / S.H. 843
Set Boat Spk
(Not Found) 9/29/58
#55 ✓

S.W. to witness man. 30.33
N.N.W. to shiner in 18" catalpa 48.79 48.88
N.W. to shiner in 18" catalpa. 60.48
S.E. to witness man. 41.18 31.18
S.W. to Shiner P.P. 32.12
S.E. to Nearside Conc. Sign Post