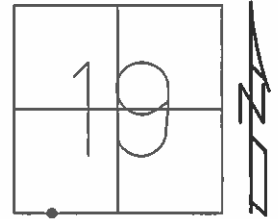


O.D.O.T. DISTRICT 2 SURVEY OFFICE (USE ONLY)

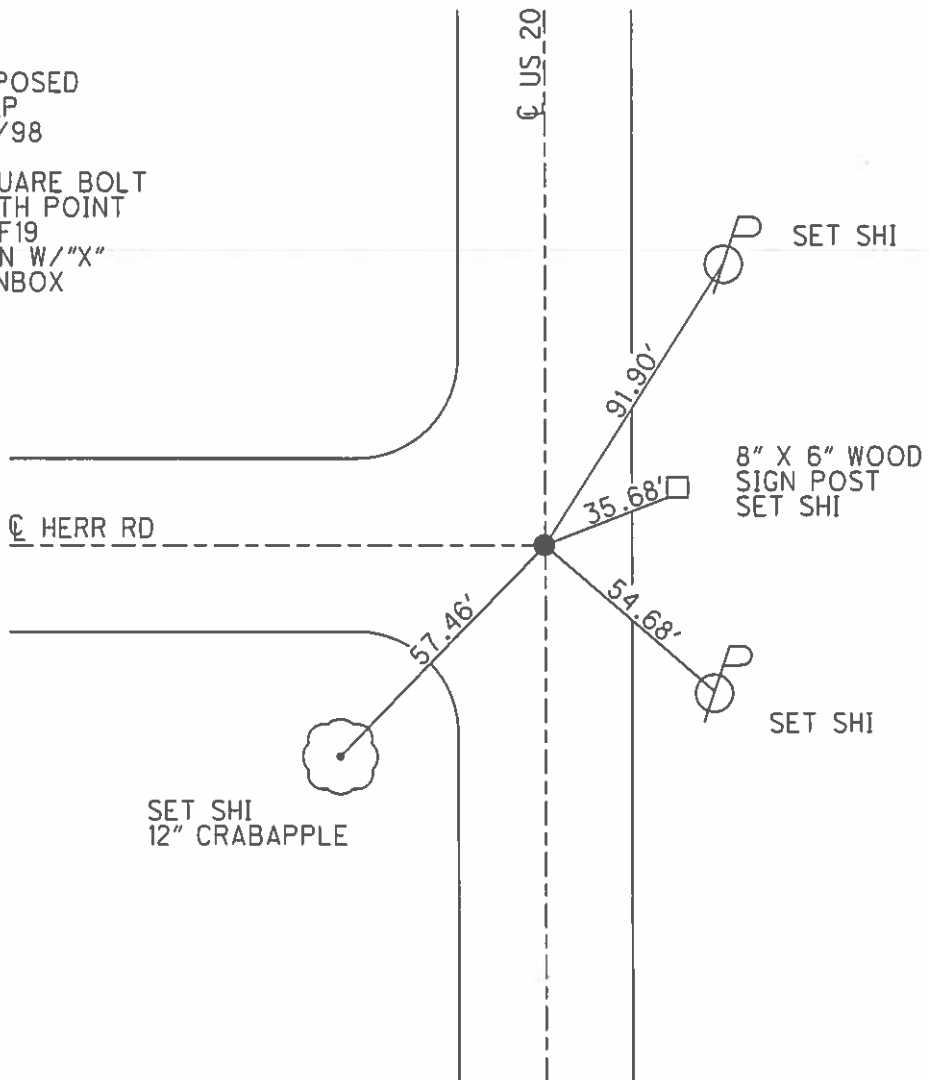
PERSONNEL _____ REFERENCE NO. 19 SHEET 21 OF 36
 NOTES LEU DATE 11/01/16 ROUTE US 20
 H.C. HOMAN WEATHER SUNNY COUNTY LUCAS
 R.C. LEU TEMP. 70° TOWNSHIP SYLVANIA
 SECTION 19
 T 9 S R 6 E

TYPE MONUMENT SQUARE BOLT
~~ON SURFACE~~ - BELOW 4"
~~LEFT~~ - Q PAV'T - ~~RIGHT~~ YES
12.8' TO RT EDGE PAVEMENT
 S.L.M. 335+24



Grid: Northing: 733671.341 Easting: 1625284.199

FD EXPOSED
 5" DEEP
 01/09/98
 C.L.
 FD SQUARE BOLT
 BENEATH POINT
 NEWREF19
 FD 1PIN W/"X"
 IN MONBOX



O.D.O.T. DISTRICT 2 SURVEY OFFICE

PERSONNEL

REFERENCE NO. 19

SHEET 19 OF 22

NOTES LOEHRKE

H.C. VAN DUSEN

R.C. Huss

Cox

DATE 6-25-97

WEATHER Sunny

TEMP. +91°

ROUTE US 20

COUNTY LUCAS

TOWNSHIP SYLVANIA

SECTION 19

T 9 S R 6 E

TYPE MONUMENT SQUARE Bolt

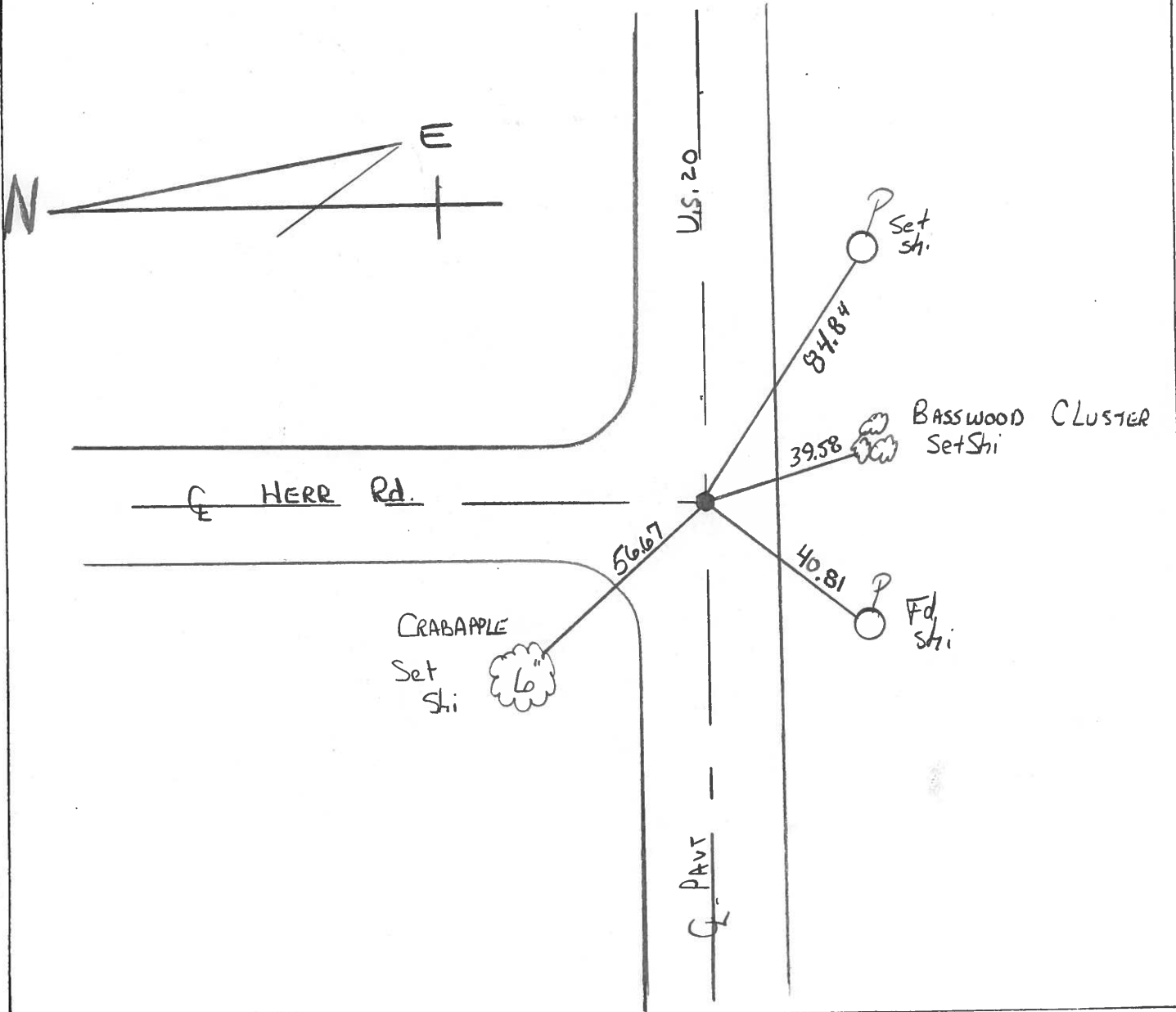
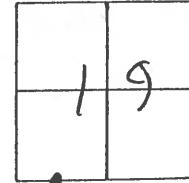
~~ON~~ SURFACE - BELOW 4" Deep

~~LEFT~~ - ~~Q~~ PAV'T. - ~~RIGHT~~ yes

12.8 TO Rt EDGE PAVEMENT

S.L.M. 335+24

Fd Exposed
 5" Deep
 1-9-98
 C.L.



County Lucas SR US #20

Date 29 June 84

Township Sylvania

Weather Fair

Section 19

Temp. 73°

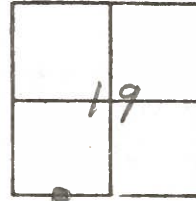
T N, R E

Personnel I. Stone

P. Neuse

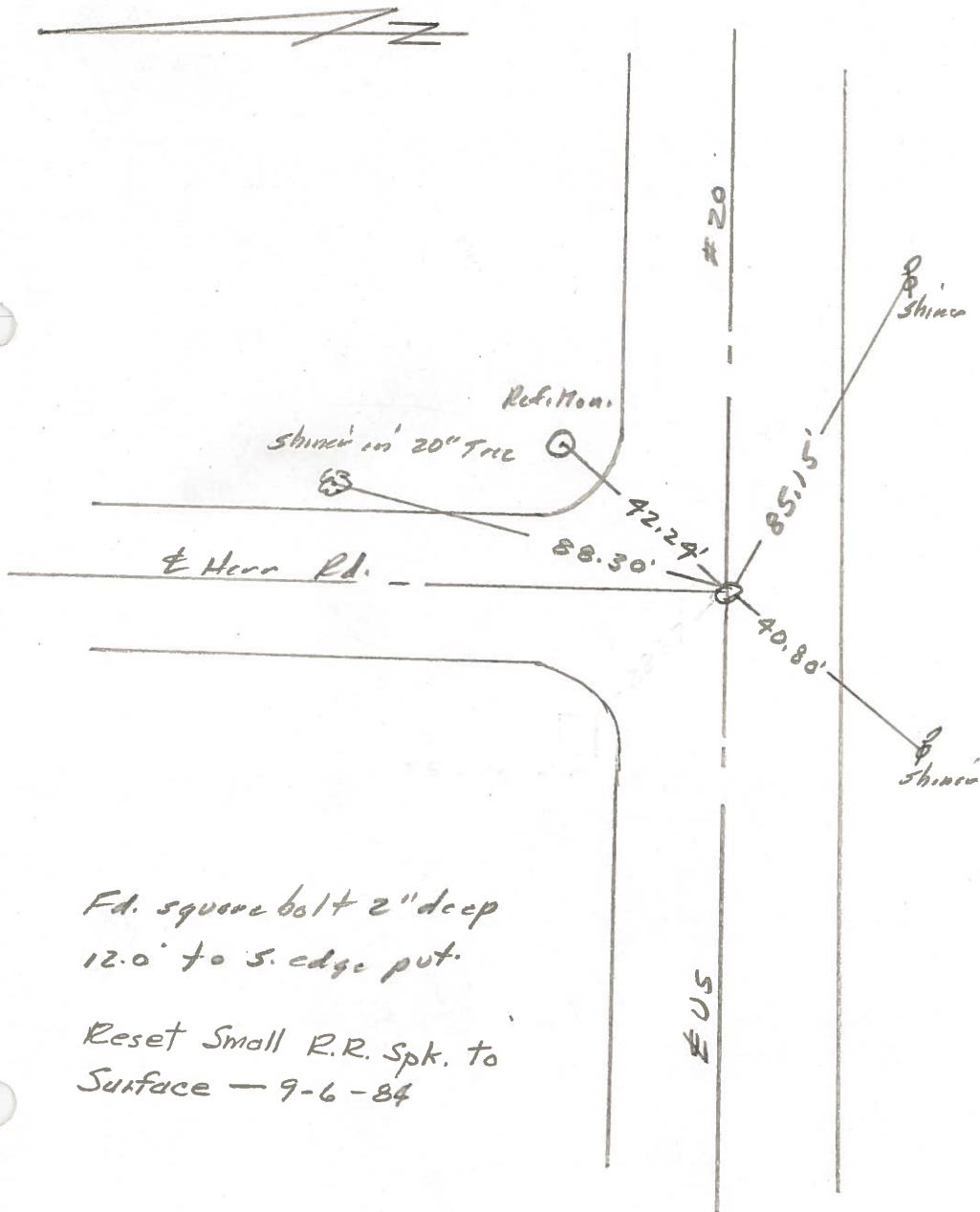
R. Michelak

D. Curtis



SLM STA. 335+55

REF. NO. 19

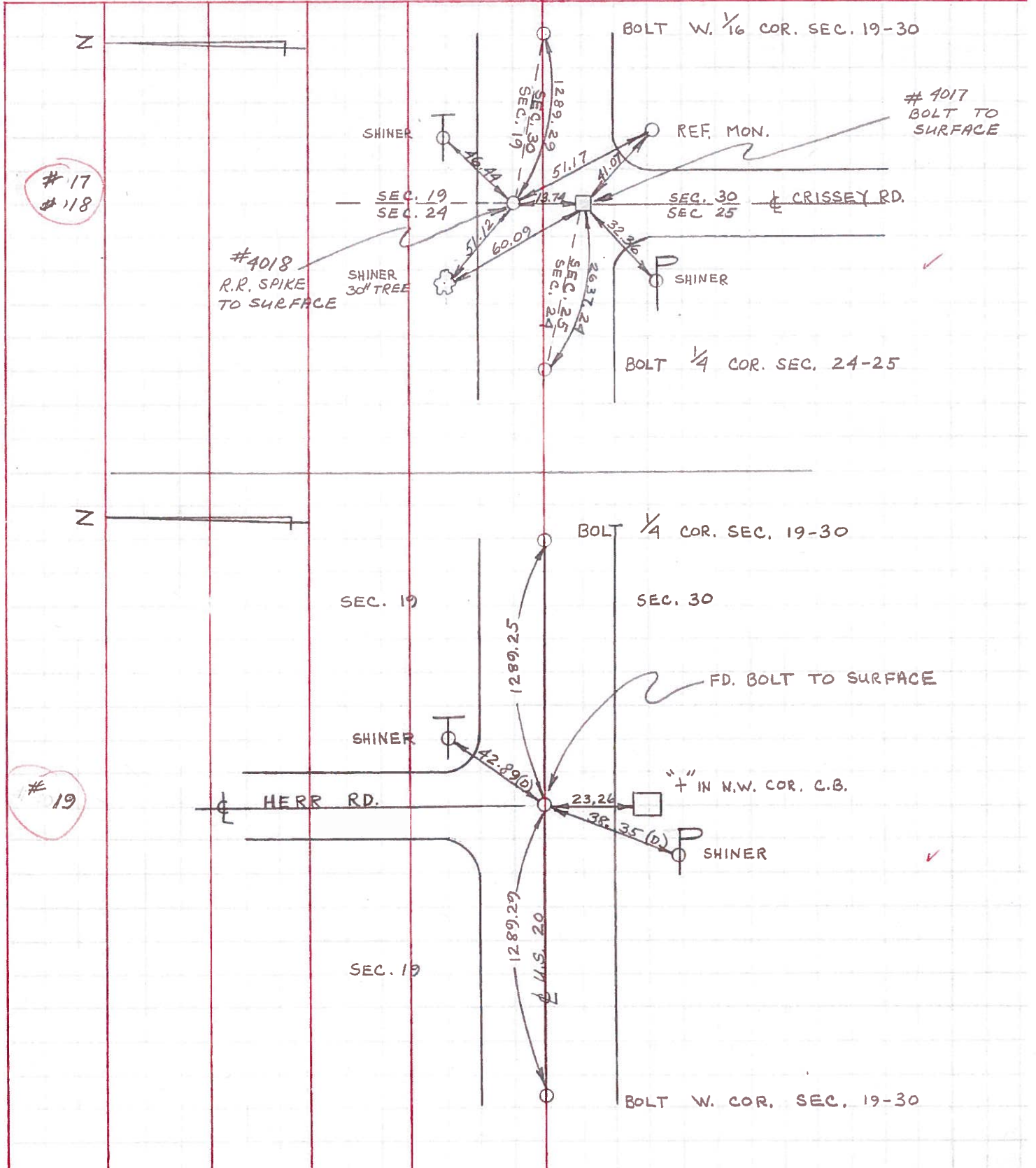


Fd. square bolt 2" deep
12.0' to S. edge put.

Reset Small R.R. Spk. to
Surface - 9-6-84

PERSONNEL	TITLE	PERSONNEL	TITLE	COUNTY	DATE
D. CURTIS				LUCAS	2 AUG 71
D. STEVENS				U.S. 20	WEATHER FAIR
R. BRANNAN					TEMP. 75 ±

DESCRIPTION	REFERENCES TO CONTROL POINTS	JOB NO.
	LEFT CENTER LINE RIGHT	



PERSONNEL TITLE PERSONNEL TITLE

COUNTY Lucas DATE May 20, 1968

W. Denho _____

S. R. 20 WEATHER mild

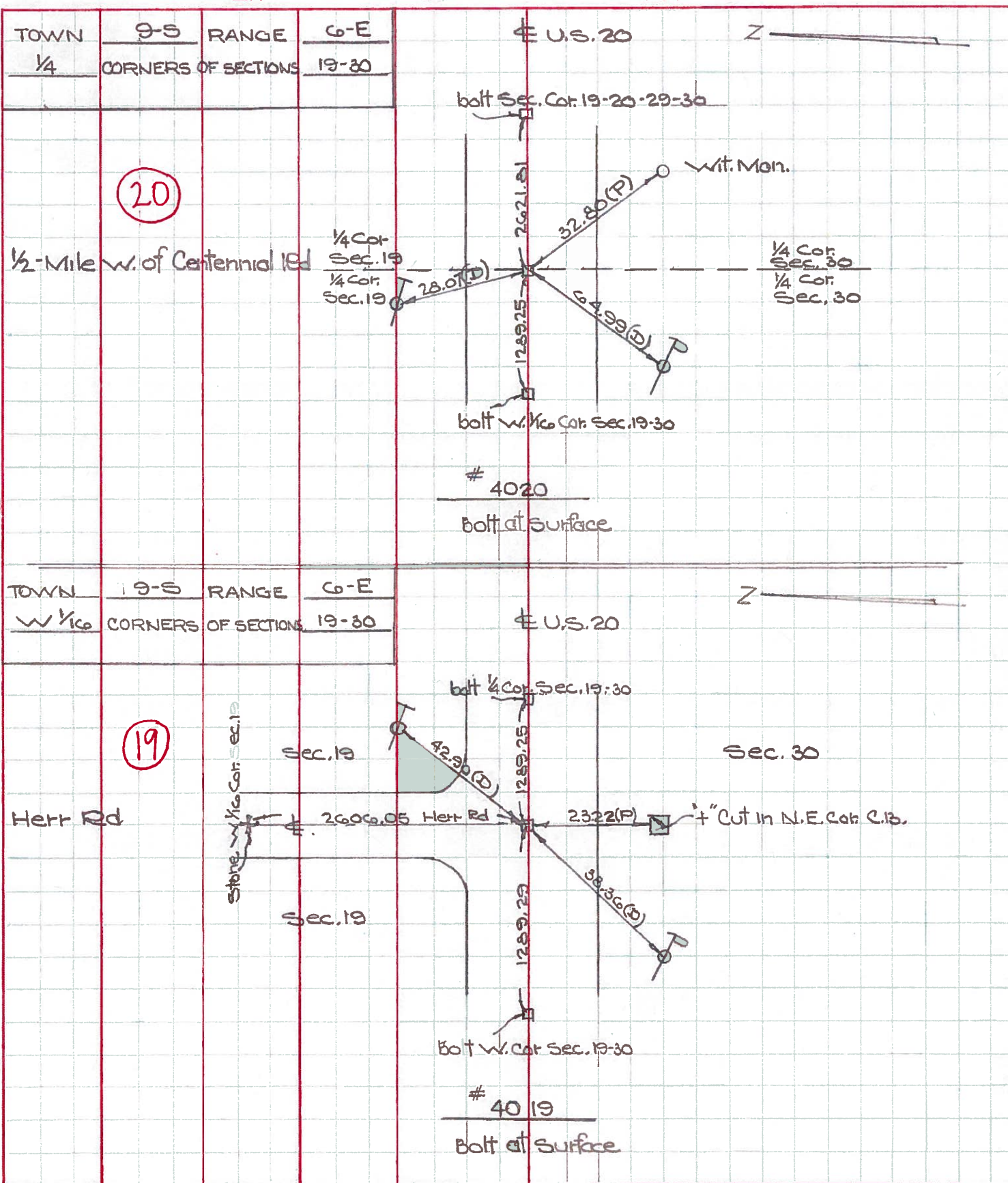
D. Curtis _____

J. Teal _____

SEC. _____ TEMP. 50°±

J. Brindley _____

DESCRIPTION U.S. 20 (Central Ave) - Ref. Mon. & Control Points JOB NO. 02944(a)



Town T95 Range R6E

Corner of Sections 1/16 19-30

Kind of Monument Bolt OK Remarks

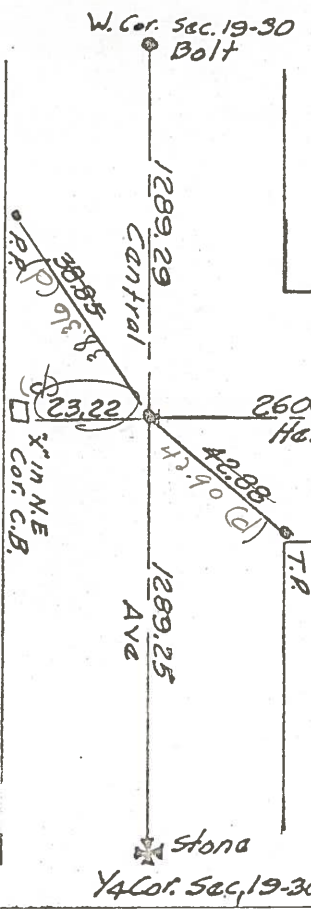
FOUND 4/10/1967 BY GUST

N. Herr Road F. B. ?

E. & W. Road Central Ave. F. B. P.

Date Checked:

(19)



4019

Town T95 Range R6E

Corner of Sections 1/4 19-30

Kind of Monument Stone OK Remarks

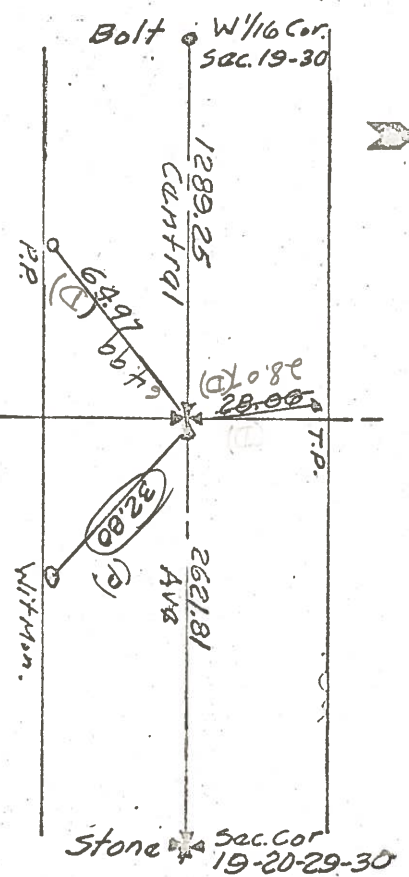
FOUND 4/11/67 BY GUST

N. & S. Road 1/4 Mile W. of Central Ave. F. B. P.

E. & W. Road Central Ave F. B. P.

Date Checked:

(20)



4020

PERSONNEL	TITLE	PERSONNEL	TITLE	COUNTY	DATE
				Lucas	OK 5-2-58
				S. R. 11.5 #20	WEATHER
				SEC.	TEMP.

DESCRIPTION	LEFT	CENTER LINE	RIGHT	JOB NO.
-------------	------	-------------	-------	---------

269# E. of Cressy Rd.
P.I. Found shiner Set Boat Spk.
(not found) 9/29/58
#56 ✓

S.S.E. to shiner in 17" oak 57.69
S. to shiner in P.P. 29.55 29.72
E.S.E. to shiner in 12" oak 57.76 81.36
N.W. to P.K. nail in tel. pole 44.85

Int. Herr Rd. # S.H. 423
Mark Fd. + in Conc. Point Set Boat Spk.
O.K. #57 ✓

S.W. to shiner in P.P. 38.34
S.S.W. to + in N.E. cor. C.B. 23.72
N.W. to X in S.W. cor. C.B. 31.90
N.E. to witness mon. 42.93 42.12
S to pin in witness mon. 29.38
N.W. to witness mon. 43.60 43.47

S. 1/4 cor. sec. 19-B-6-E.
Mark set Boat Spk.
O.K. #58 ✓

N. to + in iron fence post 30.00
N.W. to + in iron fence post 35.91
S.E. to iron rod in witness mon. 32.87
S.W. to iron rod in witness mon. (sent) 37.32

Int. Centennial Rd.
P.K. nail
Brass Plate
Set RR spk to surface 9/12/58
#59 ✓

New ✓ { S.E. 45.78
"X" NW cor. Conc. C.B. S.E. 40.57
N.E. to conc. mon. 43.95
N.E. to S.E. cor. bottom step 21.48 20.23
S.E. to B.M. spk. in 24" oak or maple 69.40
good L { S.W. to Lucas Co. B.M. good 40.47
S.W. to N.E. cor. conc. base sign post 46.00
S.E. to wit. Mon. 47.00
good ✓ { S.W. to shiner in P. Pole 41.07

1/4 mi. East of Centennial Rd.
P.K. nail Set Boat Spk.
O.K. Gradwohl Street
#60 ✓

New ✓ { N. to iron pipe 30.07
N.N.E. to shiner in 18" oak 58.91 59.08
S.E. to shiner in 18" oak 59.72 48.42
N.W. to shiner in 20" oak 56.24 56.32
New ✓ { S.E. " " " P. Pole (New) 43.79

PERSONNEL TITLE PERSONNEL TITLE

COUNTY Lucas

DATE OK 5-2-58

S. R. U.S. #20

WEATHER

SEC.

TEMP.

DESCRIPTION

LEFT

CENTER LINE

RIGHT

JOB NO.

				S.S.E. to shiner in 17" oak	57.69
269# E. of Cresscy Rd.				S. to shiner in P.P.	29.55 29.72'
P.I. found shiner	Set Boat Spk.			E.S.E. to shiner in 12' oak	57.76 81.36
	(Not Found)			N.W. to P.K. nail in tel. pole	44.85
	#56		9/29/58		
Int. Herr Rd. & S.H. 483				S.W. to shiner in P.P.	38.34
Math Ed. + in Conc. Pavmt	Set Boat Spk.			S.S.W. to + in N.E. cor. C.B.	23.22
O.K.				N.W. to x - in S.W. cor. C.B.	31.90
	#57			N.E. to witness man.	42.03 42.12
(19)				S. to pin in witness man.	29.28
				N.W. to witness man.	43.60 43.47
S. 1/4 cor. sec. 19-E-6-E.				N. to + in iron fence post	30.00'
Math set Boat Spk.				N.W. to + in iron fence post	35.91'
O.K.				S.E. to iron rod in witness man.	32.85 32.89
	#58			S.W. to iron rod in witness (Bent) man.	39.32
(20)					
Int. Centennial Rd.		New		S.E. "X" NW. Cor. Conc. C.B. S.E.	45.78 40.07
P.K. math		good		N.E. to Conc. man.	45.95
Brass Plate		good		N.E. to S.E. cor. bottom step	81.48 80.65
	#59			S.E. to B.M. spk. in 24" oak or maple	69.40
(24)		good		S.W. to Lucas Co. B.M. good	40.47'
		good		S.W. to N.E. Cor. conc. bus or sign post	46.00
		good		SE. to wit Mon.	47.00
		good		S.W. to shiner in P. Pole	41.09
1/4 mi. East of Centennial Rd.				N. to iron pipe	30.07
P.K. nail set Boat Spk.				N.N.E. to shiner in 18" oak	58.91 59.08'
O.K. Gradwohl Street		New		S.E. to shiner in 15" oak	59.72 48.42'
	#60			N.W. to shiner in 20" oak	56.24 56.32'
		New		S.E. " " " P. Pole (New)	43.79