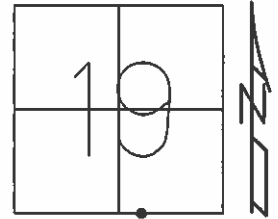


O.D.O.T. DISTRICT 2 SURVEY OFFICE (USE ONLY)

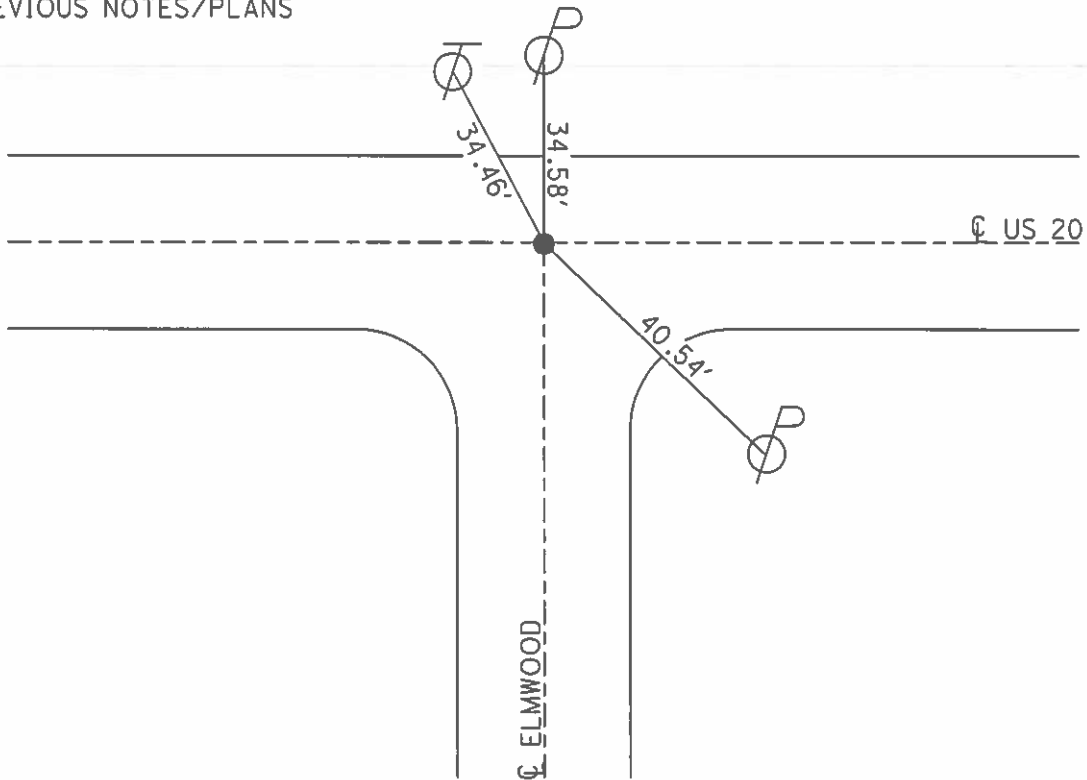
PERSONNEL _____ REFERENCE NO. 21 SHEET 23 OF 36
 NOTES CORDES DATE 06/25/97 ROUTE US 20
 H.C. _____ WEATHER SUNNY COUNTY LUCAS
 R.C. _____ TEMP. 91° TOWNSHIP SYLVANIA
 _____ SECTION 19
 _____ T 9 S R 6 E

TYPE MONUMENT PK NAIL-DID NOT FIND
 ON SURFACE - BELOW _____
 LEFT - ☉ PAV'T - RIGHT _____
 _____ TO _____ EDGE PAVEMENT
 S.L.M. 354+81/6.72



Grid: Northing: _____ Easting: _____

DID NOT FIND PK NAIL SET
 BY STONE IN 1984-ALL TIES
 DESTROYED. DID NOT RESET
 NOTE: ALL TIES ARE RECORD
 TIES. 1984 SLM=354+87 SEE
 PREVIOUS NOTES/PLANS



O.D.O.T. DISTRICT 2 SURVEY OFFICE

PERSONNEL _____

REFERENCE NO. 21

SHEET 21 OF 22

NOTES CORDES

H.C. _____

R.C. _____

DATE 6-25-97

WEATHER Sunny

TEMP. +91°

ROUTE US 20

COUNTY LUCAS

TOWNSHIP SYLVANIA

SECTION 19

T 9 S R 6 E

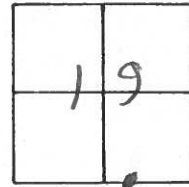
TYPE MONUMENT P.K. NAIL - DID NOT FIND

ON SURFACE - BELOW _____

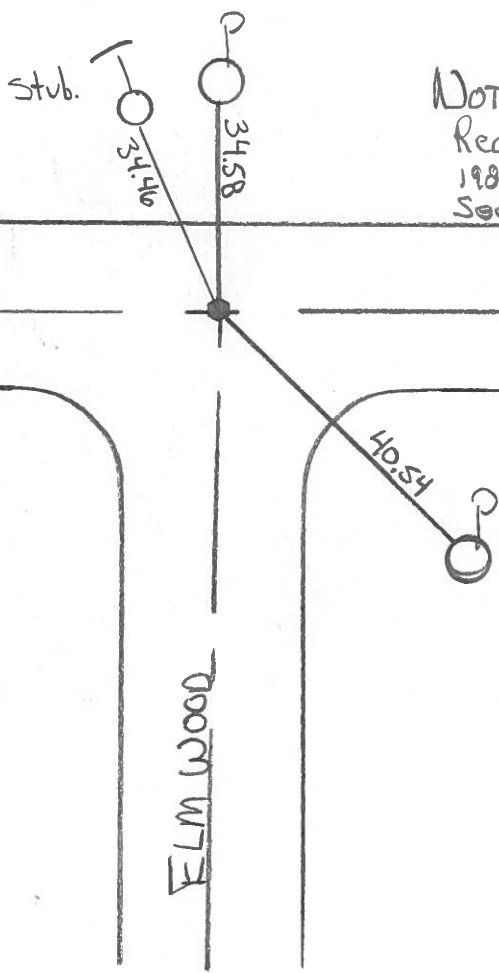
LEFT - ☉ PAV'T. - RIGHT _____

_____ TO _____ EDGE PAVEMENT

S.L.M. 354+81 / 6.72



DID NOT FIND P.K. NAIL SET
BY STONE IN 1984 - ALL
TIES DESTROYED, DID NOT RESET



NOTE: ALL TIES ARE
RECORD TIES.
1984 SLM = 354+87
See Previous Notes/Plans

County Lucas SR US#20

Date 29 June 84

Township Sylvania

Weather Fair

Section 19

Temp. 74°

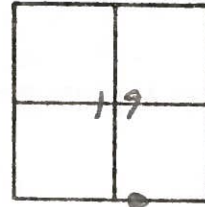
T N, R E

Personnel J. Stone

P. Neuse

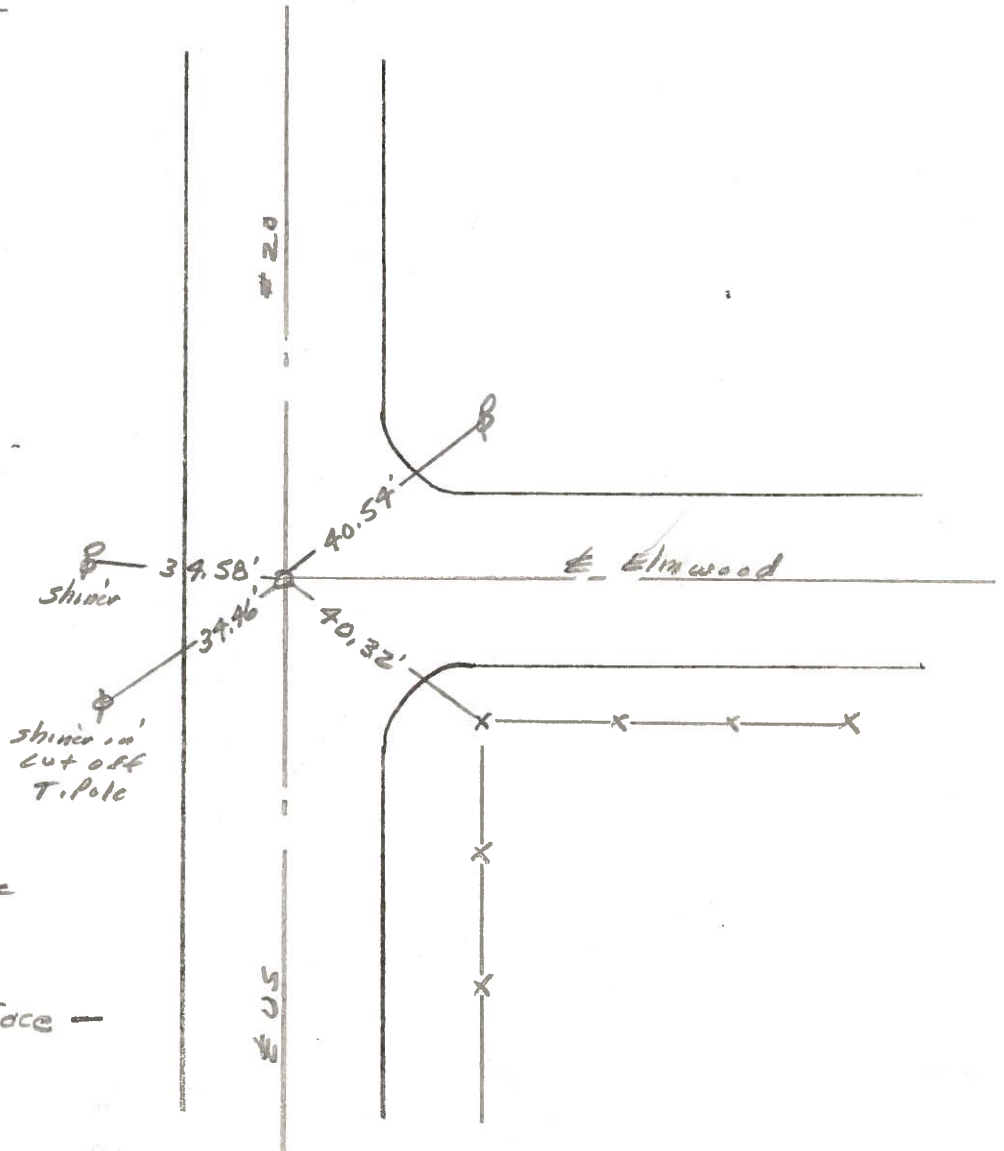
R. Michalak

D. Curtis



SLM STA. 354+87

REF. NO. 21



Fd. PK Nail To Surface
13.1' to N. edge put.

Reset P.K. Nail To Surface -
9-6-84

PERSONNEL TITLE PERSONNEL TITLE
 D. CURTIS _____
 D. STEVENS _____
 R. BRANNAN _____

COUNTY LUCAS DATE 3AUG 71

S. R. U.S. 20 WEATHER FAIR

SEC: _____ TEMP. 70±

DESCRIPTION REFERENCES TO CONTROL POINTS JOB NO.
 LEFT CENTER LINE RIGHT

