

O.D.O.T. DISTRICT 2 SURVEY OFFICE (USE ONLY)

PERSONNEL _____ REFERENCE NO. 24 SHEET 26 OF 36
 NOTES LEU DATE 08/03/16 ROUTE US 20
 H.C. HOMAN WEATHER SUNNY COUNTY LUCAS
 R.C. LEU TEMP. 72° TOWNSHIP SYLVANIA
 _____ SECTION 19
 _____ T 9 S R 6 E

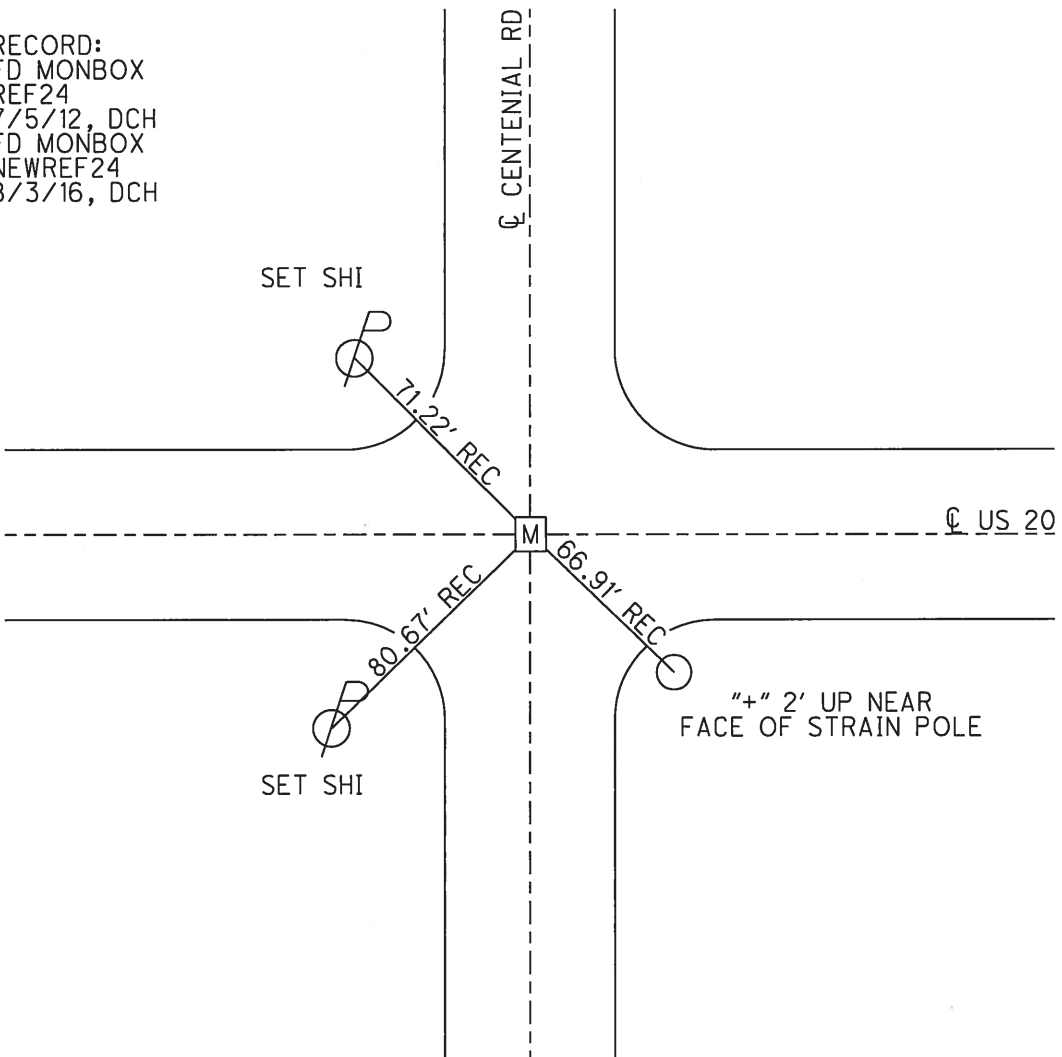
TYPE MONUMENT MON BOX
 ON SURFACE - BELOW ON
~~LEFT~~ - ☉ PAV'T - ~~RIGHT~~ BOTH
 _____ TO _____ EDGE PAVEMENT
 S.L.M. 374+15

19	20
30	29



Grid: Northing: 733601.130 Easting: 1629193.956

RECORD:
 FD MONBOX
 REF24
 7/5/12, DCH
 FD MONBOX
 NEWREF24
 8/3/16, DCH



O.D.O.T. DISTRICT 2 SURVEY OFFICE

PERSONNEL _____

REFERENCE NO. 24

SHEET 2 OF 27

NOTES LOENRKE

H.C. CANTERBURY

R.C. Helm

DATE 7-7-98

WEATHER FAIR

TEMP. +80°

ROUTE U.S. 20

COUNTY LUCAS

TOWNSHIP SYLVANIA

SECTION 19

T. R.

TYPE MONUMENT Man Box -

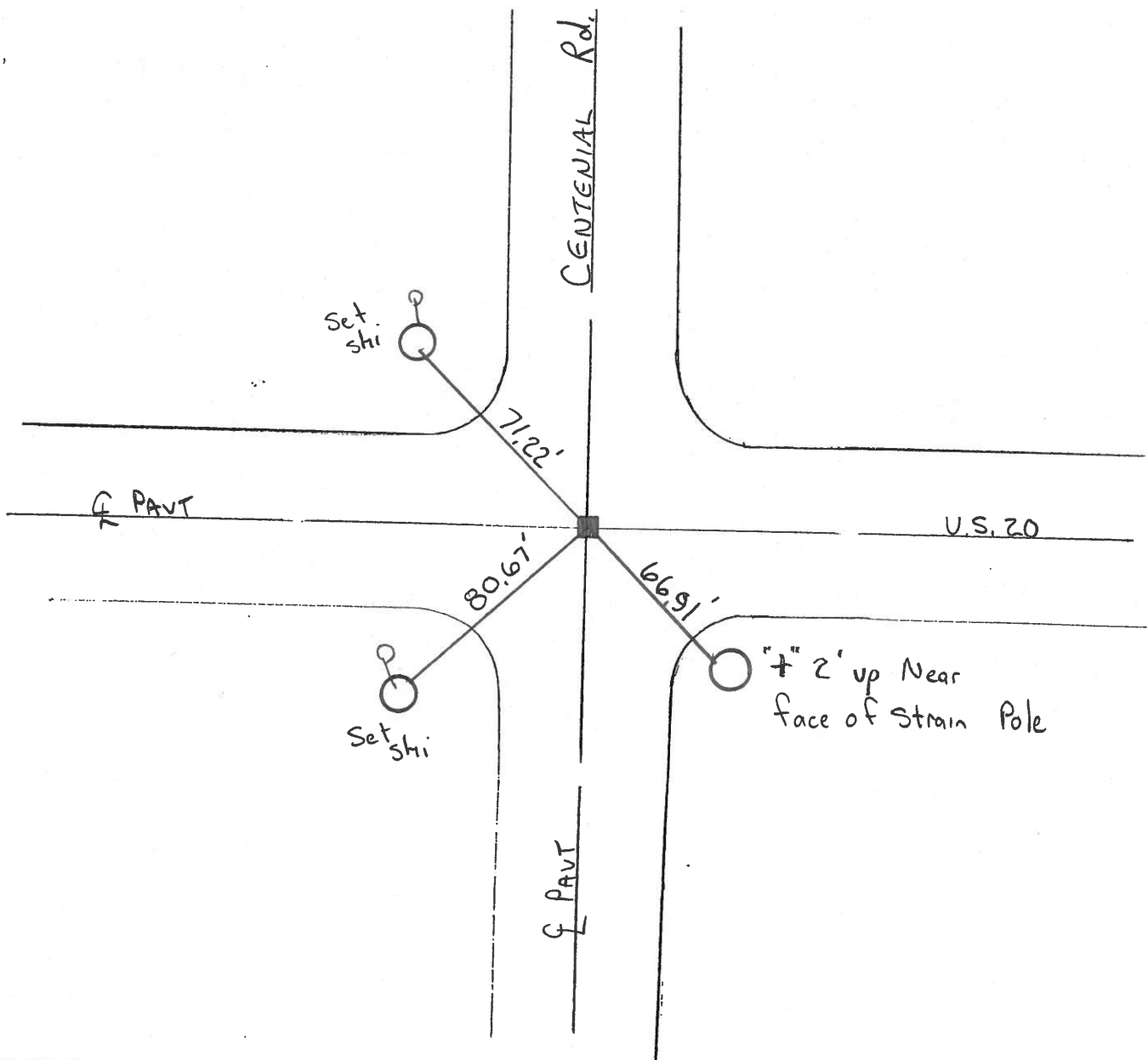
ON SURFACE - ~~BELOW~~ Yes

~~LEFT - & PAV'T.~~ - ~~RIGHT~~ Both

 TO EDGE PAVEMENT

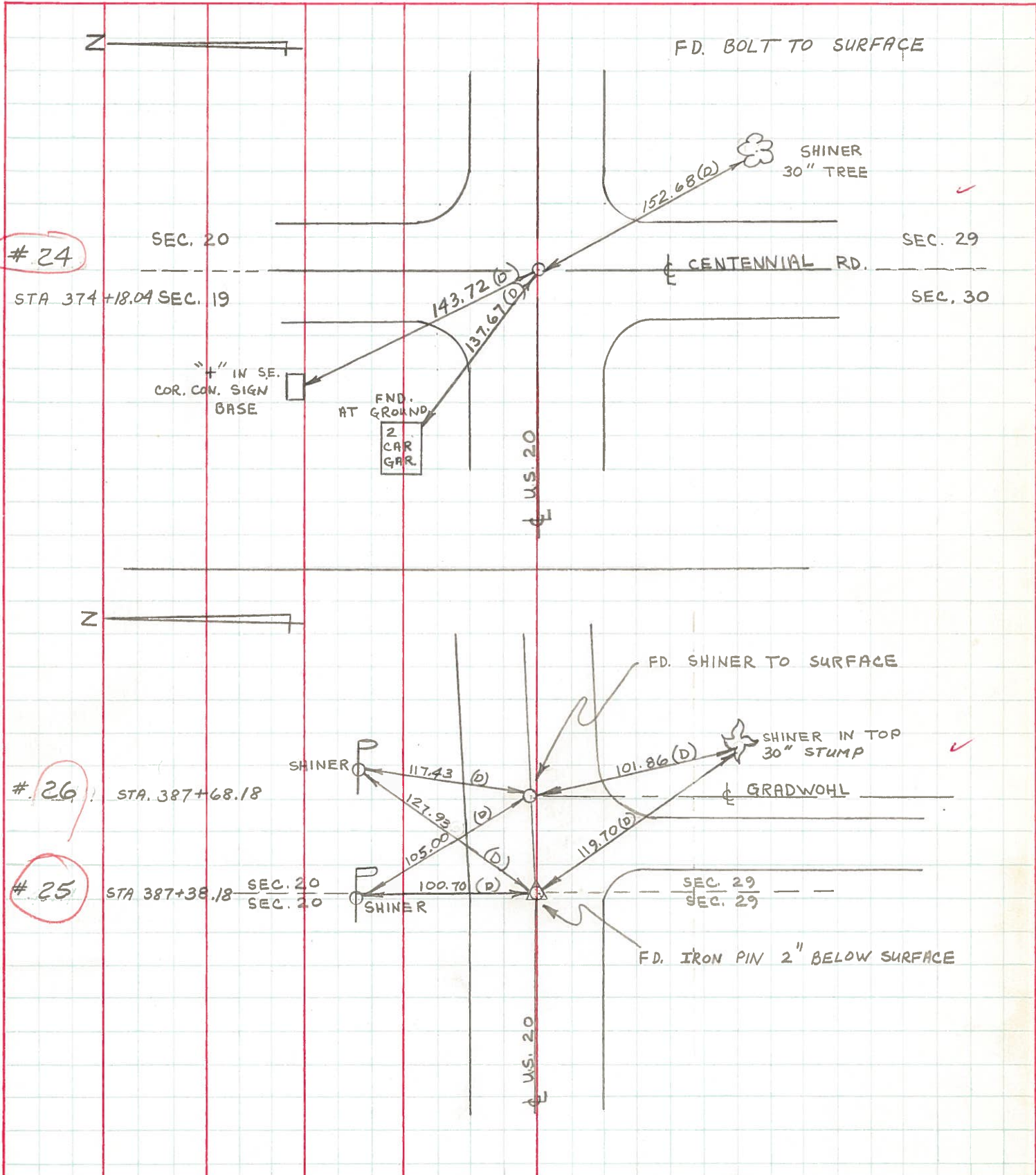
S.L.M. 374 + 15

19	20
30	29



PERSONNEL	TITLE	PERSONNEL	TITLE	COUNTY	LUCAS	DATE	3 AUG 71
D. CURTIS				S. R.	U.S. 20	WEATHER	FAIR
D. STEVENS				SEC.		TEMP.	70±
R. BRANNAN							

DESCRIPTION	REFERENCES TO CONTROL POINTS	JOB NO.
	LEFT CENTER LINE RIGHT	



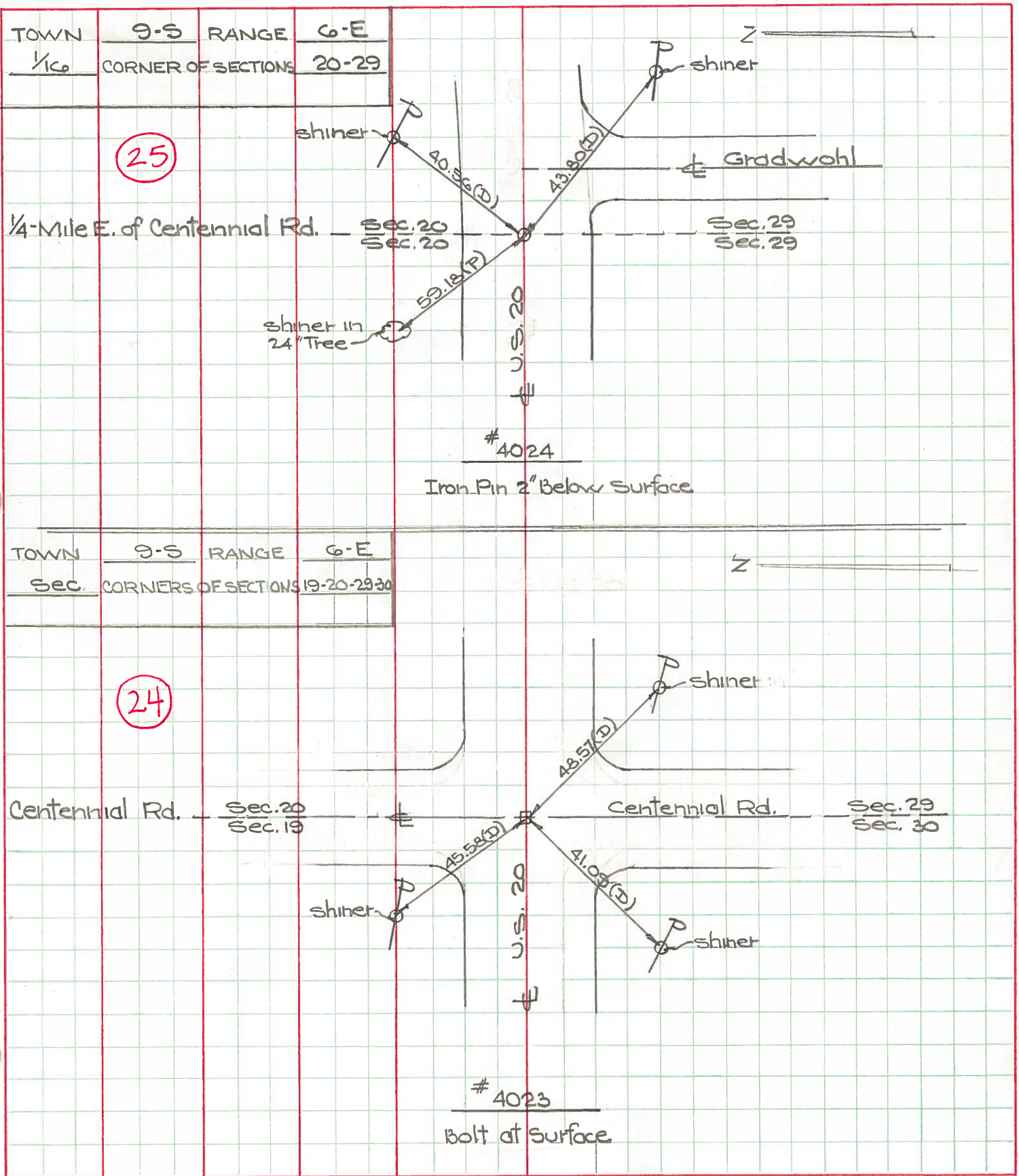
PERSONNEL TITLE PERSONNEL TITLE

COUNTY Lucas DATE May 20, 1968

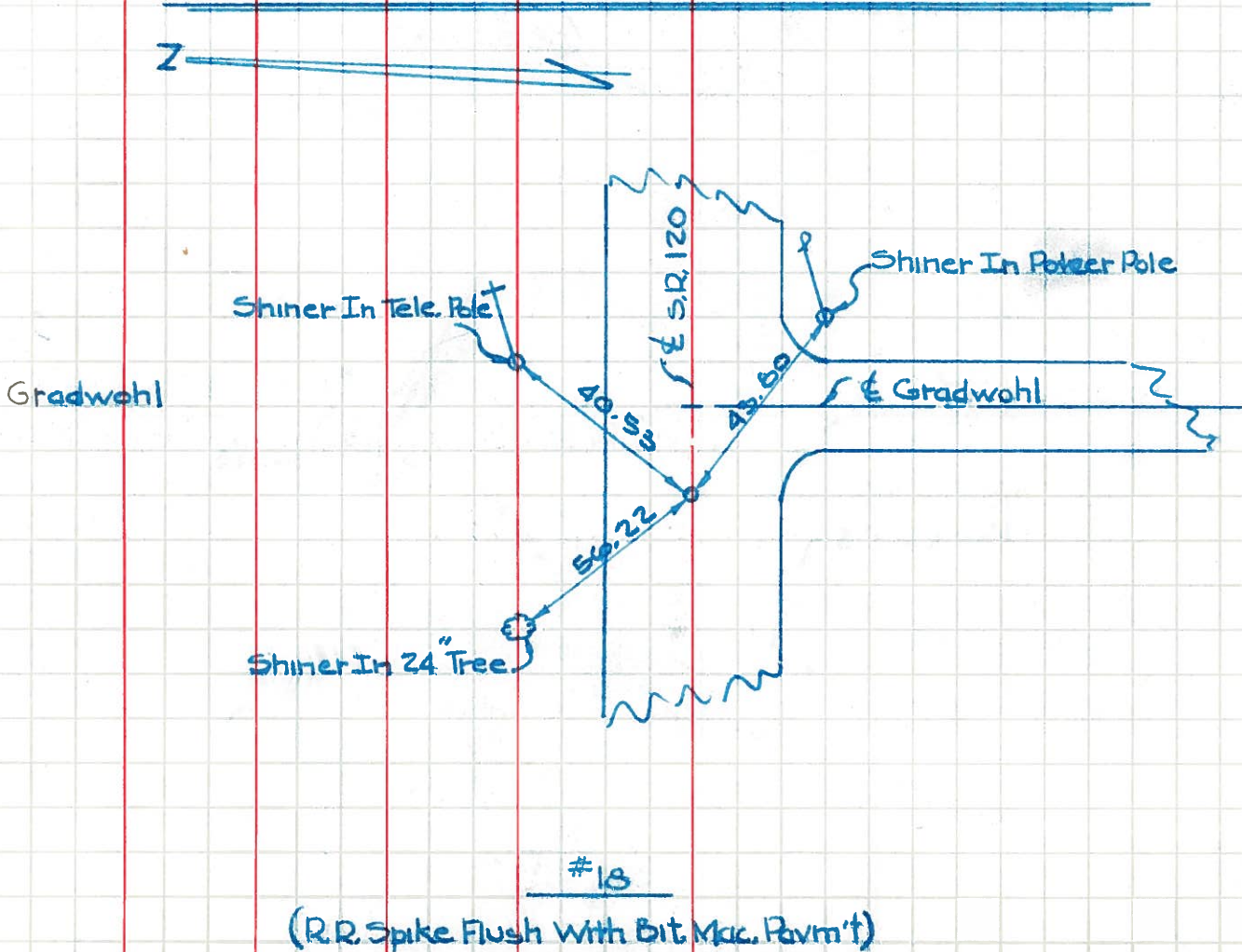
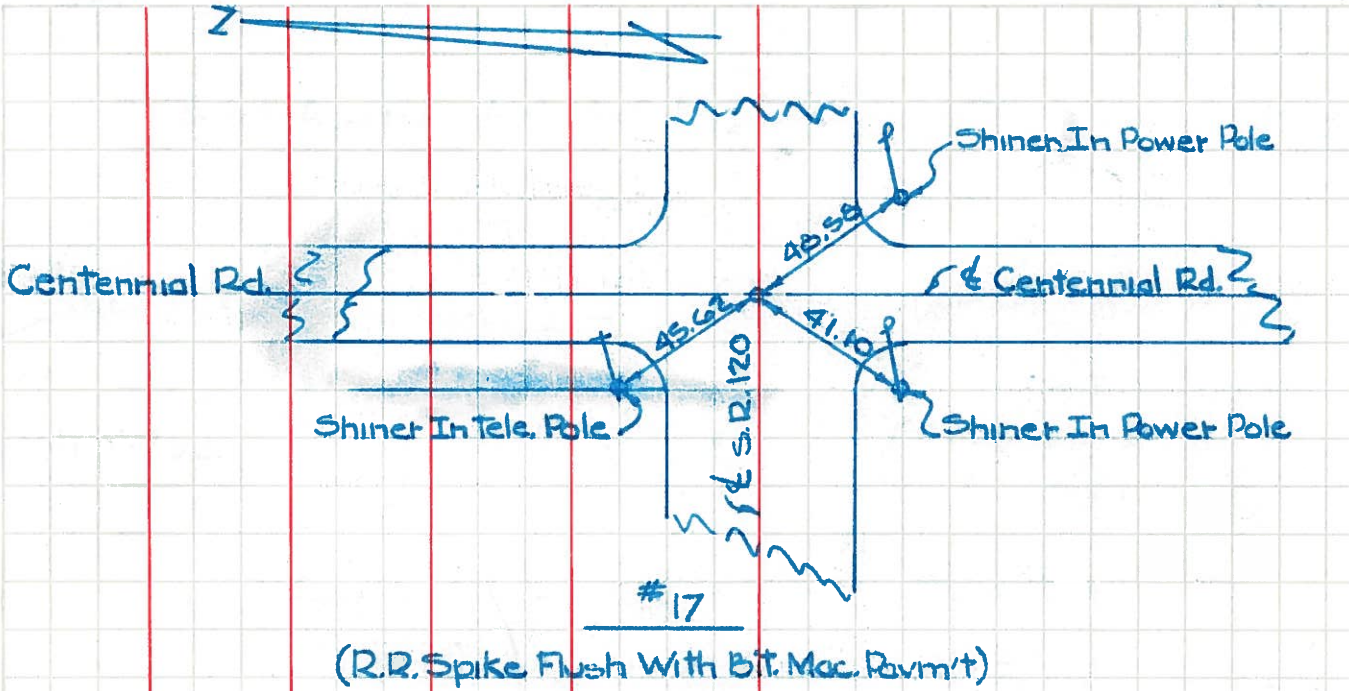
W. Denno
D. Curtis
J. Teal
J. Brindley

S. R. 20 WEATHER mild
SEC. TEMP. 50° ±

DESCRIPTION U.S. 20 (Central Ave) - Ref. Mon. & Control Points JOB NO. 02994(10)



PERSONNEL	TITLE	PERSONNEL	TITLE	COUNTY	DATE
W. Denno	_____	_____	_____	Lucas	Feb. 17, 1966
D. Curtis	_____	_____	_____	⁰⁵²⁰ 120	Sunny-Cold
F. Omev	_____	_____	_____	SEC. _____	TEMP. 24°
DESCRIPTION				S.R. 120 (Central Ave.) - Ref. Mon. & Control Points	JOB NO. _____
	LEFT	CENTER LINE	RIGHT		



PERSONNEL	TITLE	PERSONNEL	TITLE

COUNTY Lucas DATE OK 5-2-52

S. R. 115, 2420 WEATHER _____

SEC. _____ TEMP. _____

DESCRIPTION	LEFT	CENTER LINE	RIGHT	JOB NO.
269# E. of Crossway Rd. Pl. Round shiner	Set Boat Spk. (with surface) 7/24/59		S.S.E. to shiner in 17" oak 57.6 S. to shiner in P.P. 37.55 27.72 E.S.E. to shiner in 12" oak 57.75 51.36 N.W. to P.K. nail in tele pole 44.80	
	#56 ✓			
Int. Harr Rd. & S.H. 423 Start Fd. + in conc. P.K. + Set Boat Spk. O.K.	Set Boat Spk.		S.W. to shiner in P.P. 38.3 S.S.W. to + in N.E. cor. C.B. 23.7 N.W. to x - in S.W. cor. C.B. 31.9 N.E. to witness man. 42.03 42.7 S to pin in witness man. 29.7 N.W. to witness man. 43.60 43.4	
	#57 ✓			
(19)				
5.44 cor. sec. 19-E-6-E. Start set Boat Spk. O.K.	Set Boat Spk.		N. to + in iron fence post 30.00 N.W. to + in iron fence post 36.9. S. to iron rod in witness man. 32.8 S.W. to iron rod in witness man. 39.3	
	#58 ✓			
(20)				
Int. Centennial Rd. P.K. with Brass Plate	Set RR spk to surface 9/17/65		S.E. 45.78 "X" N.W. cor. conc. C.B. S.E. 40.7 N.E. to conc. man. 45.9 N.E. to S.E. cor. bottom step 81.48 S.E. to B.M. spk. in 24" oak or maple 69.4 S.W. to Lucas Co. RR 40.4 S.W. to N.E. corner base sign post 46. S.E. to wit. man. 47.00 S.W. to shiner in P.P. 41.67	
	#59 ✓			
(24)				
1/4 mi. East of Centennial Rd. P.K. nail. Set Boat Spk. O.K. Gradwohl Street	Set RR spk to surface 9/17/65		N. to iron fence post 30.07 N.N.E. to shiner in 18" oak 58.41 57.08 S.E. to shiner in 15" oak 59.22 48.42 N.W. to shiner in 20" oak 56.24 56.52 S.E. " " " P. Pole (New) 43.79	
	#60 ✓			

PERSONNEL TITLE PERSONNEL TITLE

COUNTY Lucas

DATE OK 5-2-58

S. R. U.S. #20

WEATHER

SEC.

TEMP.

DESCRIPTION

LEFT

CENTER LINE

RIGHT

JOB NO.

DESCRIPTION	LEFT	CENTER LINE	RIGHT	JOB NO.
269# E. of Cressy Rd. P.I. found shiner	Set Boat Spk. (Mark Found) 9/29/58		S.S.E. to shiner in 17" oak S. to shiner in P.P. E.S.E. to shiner in 12" oak N.W. to P.K. nail in tele pole	57.6 29.55 29.70 57.76 58.30 44.80
	#56 ✓			
Int. Herr Rd. & S.H. 423 Mark Ed. + in corner Parcel O.K.	Set Boat Spk.		S.W. to shiner in P.P. S.S.W. to + in N.E. cor. C.B. N.W. to X in S.W. cor. C.B. N.E. to witness man S. to pin in witness man. N.W. to witness man.	38.30 23.20 31.90 42.03 42.00 29.20 43.60 43.70
	#57 ✓			
5.1/4 cor. Sec. 19-E-6-E. Mark set Boat Spk. O.K.			N. to 4-in iron fence post N.W. to 4-in iron fence post S.E. to iron rod in witness man. S.W. to iron rod in witness man.	30.00 36.90 32.80 32.80 39.30
	#58 ✓			
Int. Centennial Rd. P.K. mark Brass Plate		New good good	S.E. "X" NW cor. Conc. C.B. S.E. N.E. to conc. man N.E. to S.E. cor. bottom step S.E. to B.M. spk. in 24" oak or maple S.W. to Lucas Co. B.M. good S.W. to N.E. Cor. conc. base sign post "SE. to wit Man. S.W. to shiner in P. Pole	45.78 40.00 43.90 81.48 80.60 69.40 40.40 46.00 47.00 41.00
	#59 ✓			
1/4 mi. East of Centennial Rd. P.K. nail set Boat Spk. O.K. Gradwohl Street		New New	N. to iron pipe N.N.E. to shiner in 18" oak S.E. to shiner in 15" oak N.W. to shiner in 20" oak S.E. " " " P. Pole (New)	30.07 58.91 59.08 59.72 48.42 56.24 56.32 43.79
	#60 ✓			