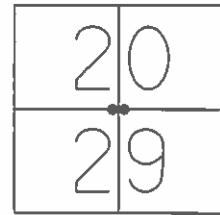


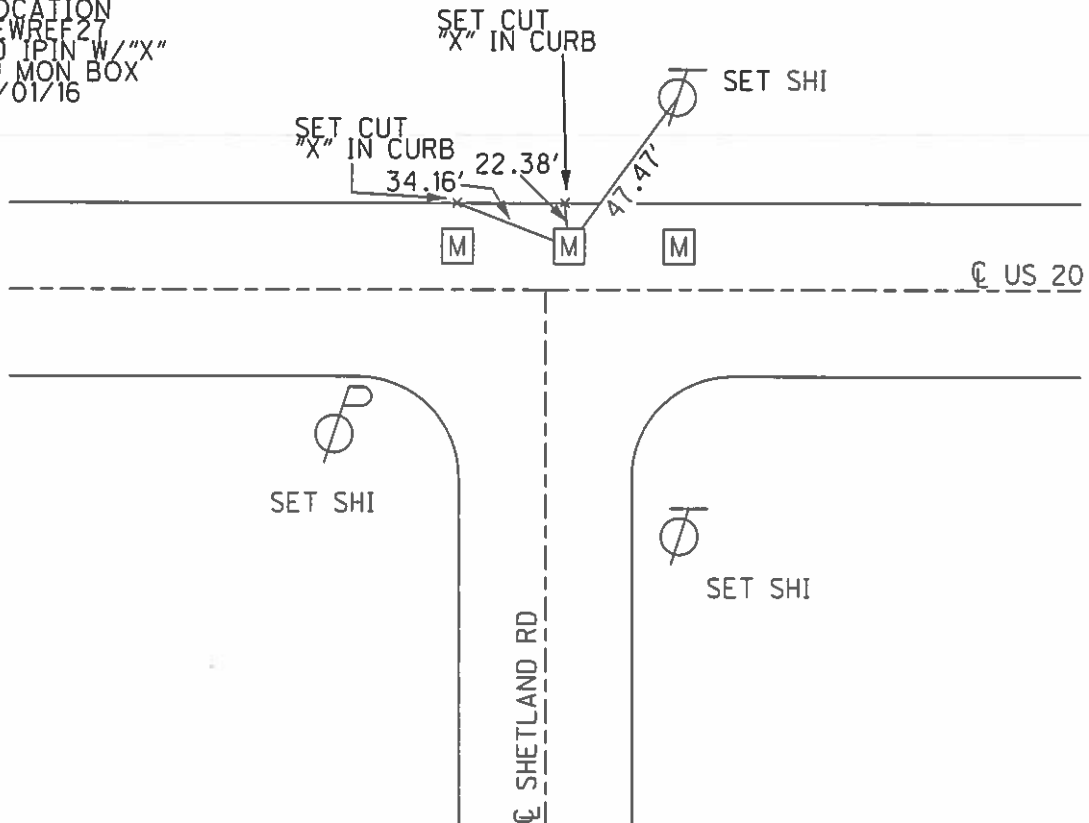
O.D.O.T. DISTRICT 2 SURVEY OFFICE (USE ONLY)

PERSONNEL \_\_\_\_\_ REFERENCE NO. 27 SHEET 29 OF 36  
 NOTES LEU DATE 08/03/16 ROUTE US 20  
 H.C. HOMAN WEATHER PARTLY CLOUDY COUNTY LUCAS  
 R.C. LEU TEMP. 87° TOWNSHIP SYLVANIA  
 \_\_\_\_\_ SECTION 20  
 \_\_\_\_\_ T 9 S R 6 E

TYPE MONUMENT \_\_\_\_\_ MON BOXES \_\_\_\_\_  
 ON SURFACE - ~~BELOW~~ \_\_\_\_\_ ON \_\_\_\_\_  
 LEFT - ~~C-PAV'T~~ - RIGHT \_\_\_\_\_ ±18'  
12.6' TO LT EDGE PAVEMENT  
 S.L.M. \_\_\_\_\_  
 Grid: Northing: 733604.475 Easting: 1631832.798

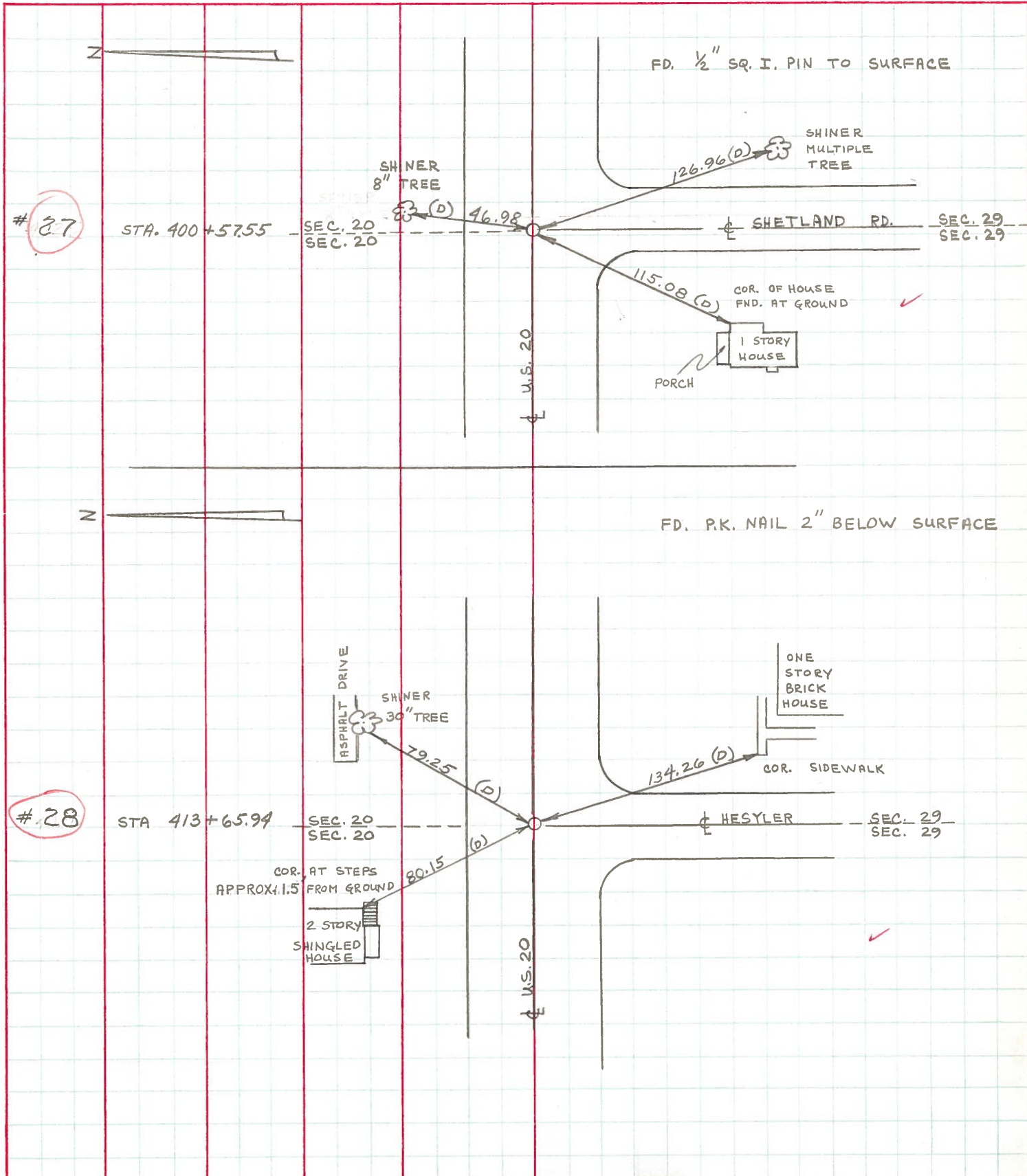


REF27  
 FD SHANK  
 NEW MON  
 LOCATION  
 NEW REF 27  
 FD IPIN W/ "X"  
 IN MON BOX  
 11/01/16



PERSONNEL	TITLE	PERSONNEL	TITLE	COUNTY	LUCAS	DATE	4AUG71
D. CURTIS				S. R.	U.S. 20	WEATHER	CLOUDY
D. STEVENS				SEC.		TEMP.	65°±

DESCRIPTION	REFERENCES TO CONTROL POINTS	JOB NO.
	LEFT CENTER LINE RIGHT	



PERSONNEL TITLE PERSONNEL TITLE

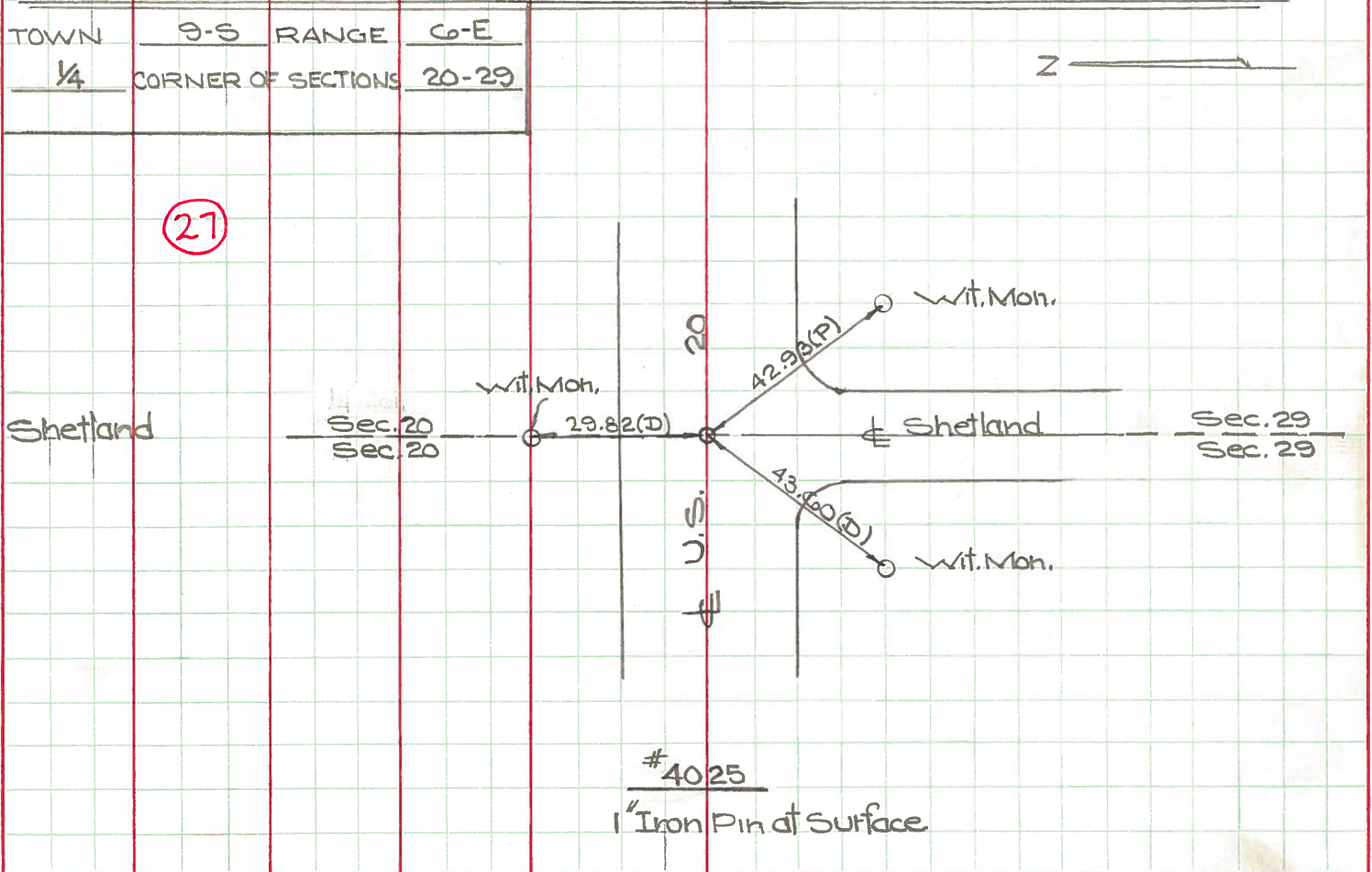
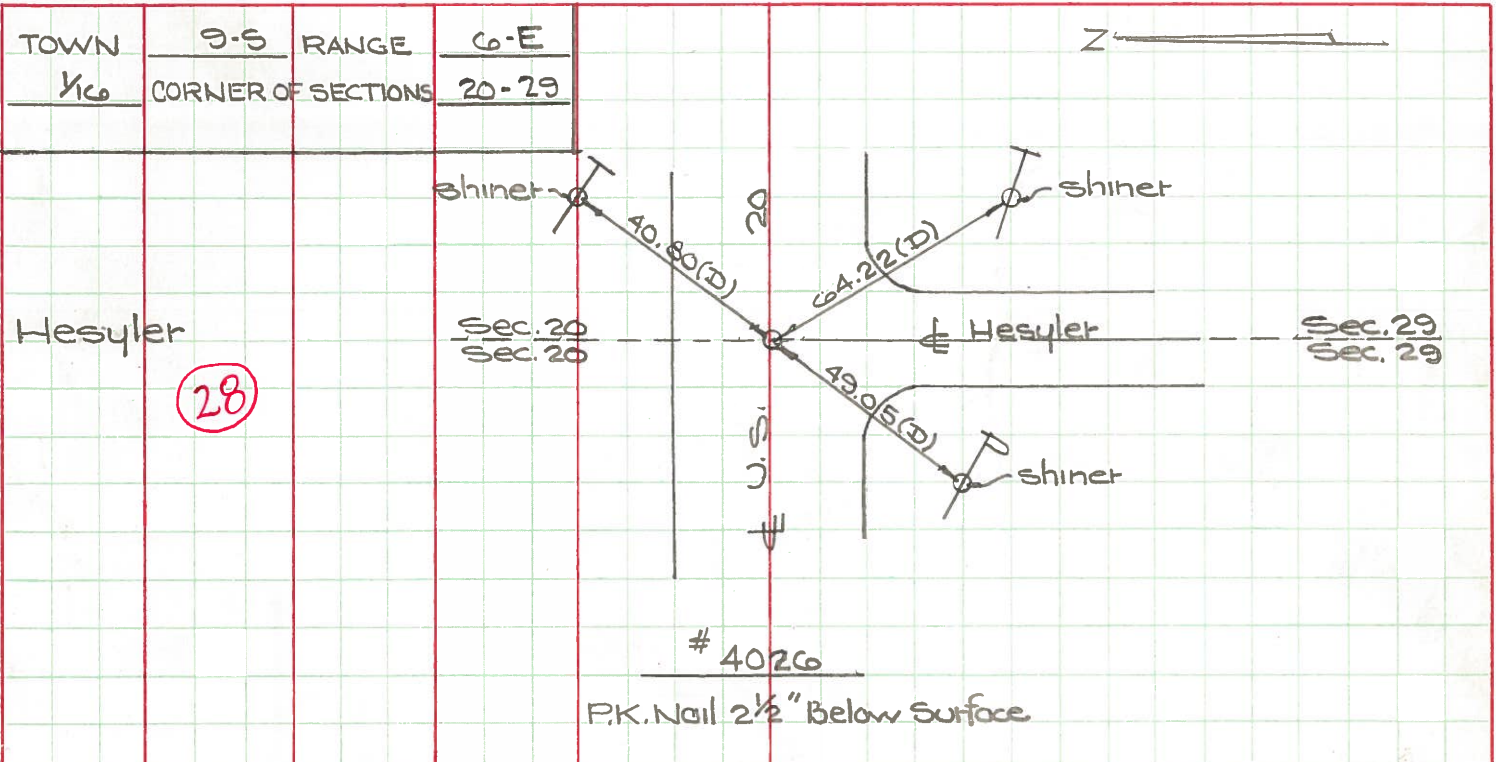
COUNTY Lucas DATE May 20, 1968

W. Denno  
D. Curtis  
J. Teal  
J. Brindley

S. R. 20 WEATHER mild

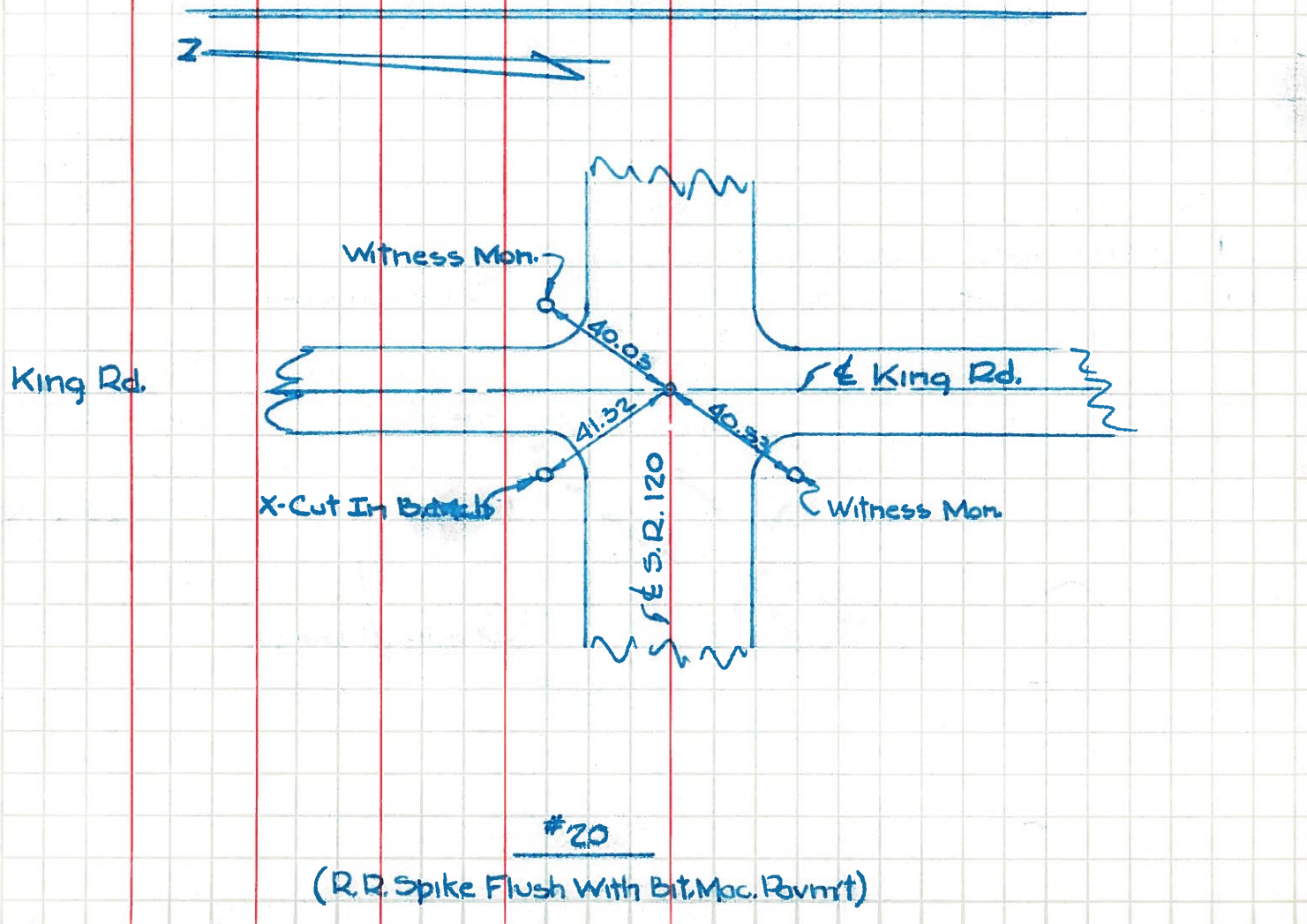
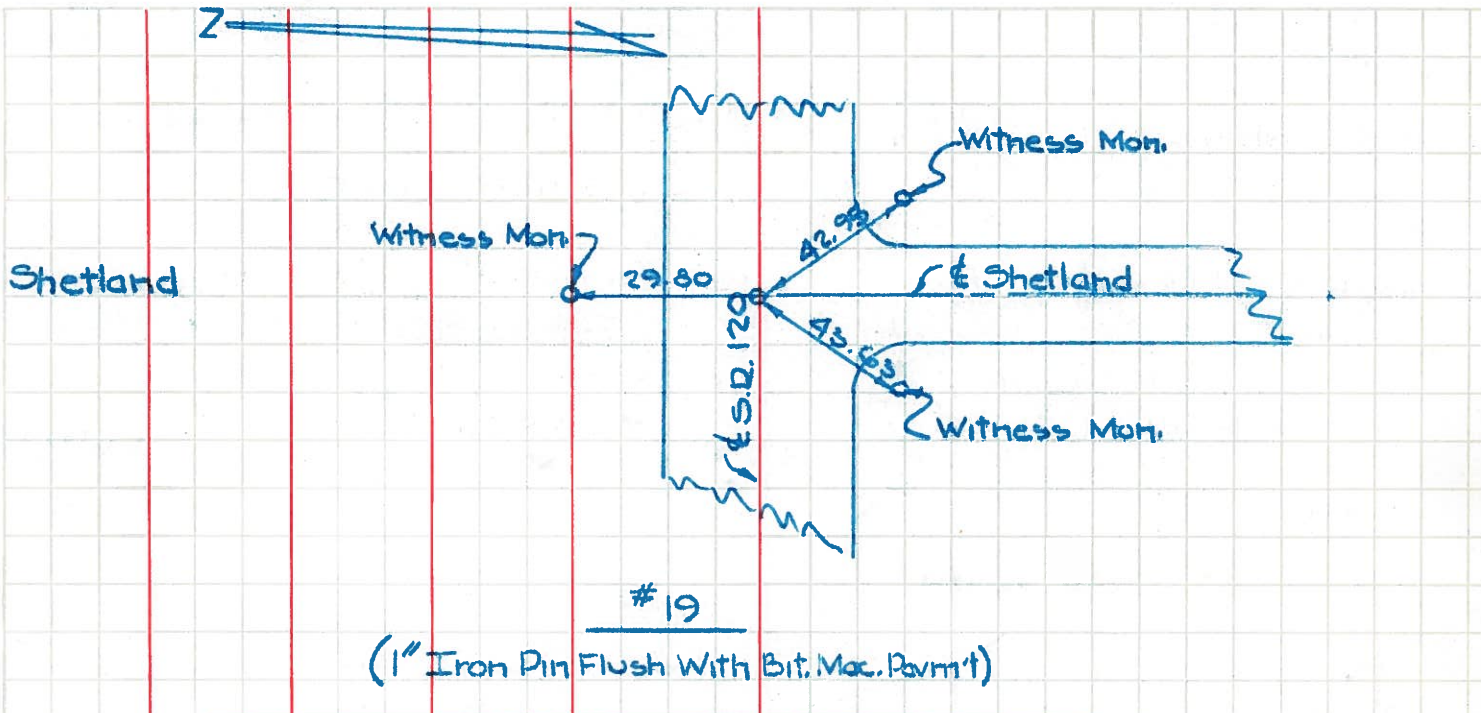
SEC. TEMP. 50°±

DESCRIPTION U.S. 20 (Central Ave) - Ref. Mon. & Control Points JOB NO. 02994(0)





PERSONNEL	TITLE	PERSONNEL	TITLE	COUNTY	Lucas	DATE	Feb. 17, 1966
W. Denno					US 20		
D. Curtis				S. R.	120	WEATHER	Sunny-Cold
F. Omev				SEC.		TEMP.	24°
DESCRIPTION				SR. 120 (Central Ave) - Ref. Mon. & Control Points			
	LEFT		CENTER LINE		RIGHT		JOB NO.



PERSONNEL TITLE PERSONNEL TITLE

COUNTY Lucas DATE OK 5-2-58

S. R. U.S. #20 WEATHER \_\_\_\_\_

SEC. \_\_\_\_\_ TEMP. \_\_\_\_\_

DESCRIPTION LEFT CENTER LINE RIGHT JOB NO.

5/4 Cor. sec. 20 R-6-E. Nail Shetland Ed. (South) O.K. set P.K. Set Post - P.K. <b>(27)</b> #61	✓ S.E. to witness mon. Lu. Co. B.M. #118 4.92 ✓ N. to witness mon. 29.89 ✓ S.W. to witness mon. 43.59 42.67 ✓ W.N.W. to shiner in 24 oak 70.24 70.30
Int. King Rd. Brass plate - set P.K. Post P.K. O.K. <b>(29)</b> #62	✓ N.W. to point of "U" in County B.M. 41.36 41.22 ✓ N.E. to witness mon. 40.02 40.21 S.W. to shiner in P.P. 41.14 S.E. to t. n p mp is nd 63.38 63.51 S.W. to witness mon. 40.48
P.I. 5/4 Cor. sec. 21 R-6-E. Brass plate O.K. set Post P.K. <b>#63</b>	✓ N.W. to shiner in T.P. 41.86' ✓ S. to shiner in P. 4.63' ✓ N. to point of "U" in County B.M. #120 38.73' 38.67' ✓ N.E. to shiner in 12" Box Elder 49.24 49.62
Int. McCord Rd. Brass plate - set P.K. P. P.K. <b>#64</b>	S.E. to point of "U" in County B.M. 50.00 S.W. to witness mon. 42.96 ✓ <sup>Cor. Broken off</sup> N.W. to S.E. cor. of pump island <sup>57.94</sup> 56.97' <del>N.E. to shiner in T.P. 46.92'</del> ✓ New S.W. to shiner in P. Pole 45.88 ✓ S.E. to Near Carlow Rd Sign Post 41.86
5/4 Cor. sec. 22 R-6-E. Brass plate - set P.K. Moffat Rd <b>#65</b>	N.W. to point of "U" in County B.M. #722 38.77 N.E. to witness mon. (Sta R/ mon) 97.45 S.E. to iron pipe in witness mon. 40.92 S.W. to shiner P. Pole 33.91 S. to shiner guard rail 30.42 S.E. " " " " 32.03 S.W. " " " " 33.73

Fd.

New Poles



PERSONNEL TITLE PERSONNEL TITLE

COUNTY Lucas DATE 05-2-58

S. R. U.S. #20

WEATHER

SEC.

TEMP.

DESCRIPTION

LEFT

CENTER LINE

RIGHT

JOB NO.

27

✓ 5/4 cor. sec. 20 E-6-E  
Nail Shetland Ed. (South)  
O.K. Set F.K. Set Rest - F.K.  
#61  
Set RR Spk. to Surface 9/17/65

✓ S.E. to witness man. Lu. Co. B.M. #118 42.92  
✓ N. to witness man. 29.89  
✓ W.S.W. to witness man. 43.59 45.57  
✓ W.N.W. to shiner in 24" oak 70.27 72.35

✓ Int. King Ed.  
Brass plate - set F.K. Rest - F.K.  
O.K.  
#62  
Set RR Spk. to Surface 9/17/65

✓ N.W. to point of "U" in County B.M. 41.36 41.22  
✓ N.E. to witness man. 40.02 40.74  
✓ S.W. to shiner in T.P. 41.14  
✓ S.E. to + in pump island 63.38 62.51  
✓ S.W. to witness man. 40.48

29

✓ 5/4 cor. sec. 21 E-6-E.  
Brass plate  
O.K. Set Rest Spk.  
#63  
Set RR Spk. to Surface 9/17/65

✓ N.W. to shiner in T.P. 41.86  
✓ S. to shiner in P.P. 24.63  
✓ N. to point of "U" in County B.M. #120 38.73 38.73  
✓ N.E. to shiner in 12" Box Elder 47.24 47.62

✓ Int. McCord Ed.  
Brass plate - set F.K. Rest - F.K.  
#64  
Set RR Spk. to Surface 9/17/65

✓ Cor. Broken off

✓ New  
✓ New

S.E. to point of "U" in County B.M. 50.00  
N.W. to witness man. 42.95  
N.W. to S.E. cor. of pump island 59.00 51.27  
N.E. to shiner in T.P. 46.92  
S.W. to Shiner in P.P. 45.88  
S.E. to Near Car Care Rd. Spk. 41.86

5/4 cor. sec. 22 E-6-E.  
Brass plate - set F.K.  
Moffat Rd  
#65  
Ed. + Cut for Moffat Rd on new overhead lines

N.W. to point of "U" in County B.M. #122 38.77  
N.E. to witness man. (State R/W man) 97.45  
S.E. to iron pipe in witness man. 40.92  
S.W. to Shiner P.P. 33.91  
S. to Shiner guard rail Post 30.92  
S.E. " " " " " 32.03  
S.W. " " " " " 33.73  
E.C. " " " " " 71.56